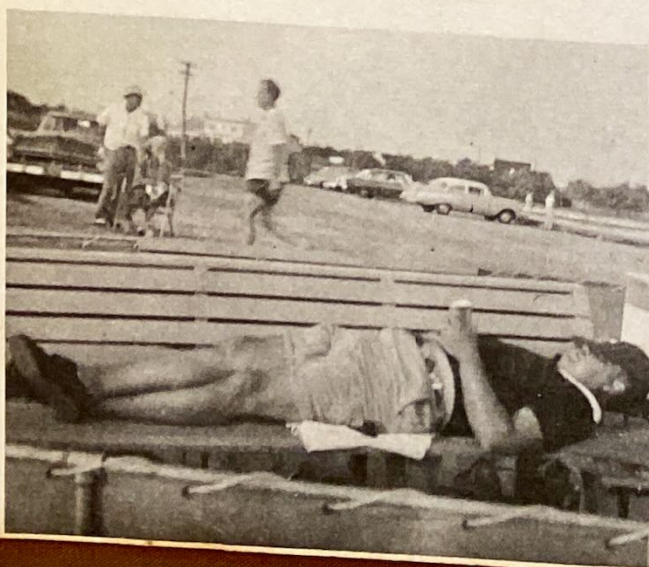


SOUTH BAY CRUISING CLUB

1959



The South Bay
Cruising Club means
all things to all people
(and to many dogs, as
well)—cruising, boozing
and snoozing being
among the major
attractions.



South Bay Cruising Club

An organization formed in 1951 to promote cruising under sail on Great South Bay and nearby waters.

OFFICERS

Commodore, Merritt L. Smith
Vice-Commodore, Robert J. Tarr
Rear Commodore, Ray Davis
Corresponding Secretary, Robert L. Paterson
Recording Secretary, Stuart Baldwin
Treasurer, Richard Blue, Jr.
Fleet Captain, John D. Beinert
Fleet Surgeon, Dr. William G. Hansen
Chanteyman, Freeman Bloodgood

BOARD OF GOVERNORS

Julien T. Davies	Francis T. Miles
Fred C. Eggerstedt	Henry A. V. Post
Marston Hamlin	Richard Thall
John F. Young	

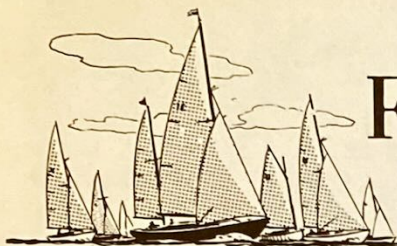
COMMITTEE CHAIRMEN

Entertainment, Stuart Paterson
Handicap, Ray Davis
Cruising, John D. Beinert
Regatta, Merritt L. Smith
Measurement, Edmund W. Poor

YEARBOOK EDITORIAL BOARD

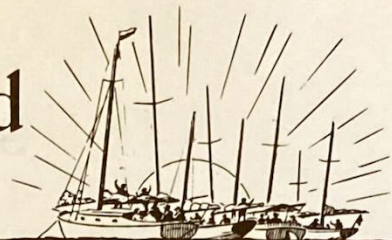
Robert L. Paterson, Hervey G. Smith, John D. Beinert,
Dave Henderson

Member Club, Great South Bay Yacht Racing Association and
North American Yacht Racing Union



From The Masthead

SOUTH BAY CRUISING CLUB



FROM THE MASTHEAD

We'd like to call attention to a significant development in the schedule of the South Bay Cruising Club for the coming season – an increase in cruising activity.

A large committee of interested skippers turned to one rainy night this Spring and agreed to an expanded cruising program. The Board of Governors named three "official" cruises and authorized the awarding of medallions and a trophy for cruising. A number of new yachts have been added to the fleet – yachts whose owners have professed a lively interest in the joys of living afloat, whether for a weekend or a fortnight.

We think this is heartening, because the encouragement of cruising under sail was the original and still is the main purpose of the SBCC.

Now, it is up to the membership to make this phase of the Club's activity a success.

This is not to say there should be any less emphasis on the racing program; merely more on the cruising schedule. Regattas have always attracted the largest Cruising Club fleets, and the sight of fifty yachts filling Nicoll Bay at the start of a West Island race is thrilling and satisfying. We merely mean to say a few words on behalf of combining cruising with racing to the mutual satisfaction of both the competitive and contemplative skipper.

The West Island Race is a pointed example. What better occasion for an easy weekend rendezvous in Great River, whether a skipper is racing or not. And the GSBYRA Cruise Week is another chance to cruise in company with fellow Club members and to participate as part of the cruising fleet in the South Bay's largest single event.

The Labor Day Weekend has been revamped, by changing the date of the Smith Trophy Race, to allow for more convenient cruising for the whole Club and particularly for those who are racing one-design boats in the annual Bellport Regatta.

We'd also like to see a large turnout for the Annual Cruise. With three different designations – Cormorant Point, Montauk Harbor and Cuttyhunk – there is a cruise suited to the preference of everyone.

The weekend rendezvous has been gaining in popularity in the last few years; in fact, last year's Fall Cruise over the Columbus Day weekend was a high spot. Garbage Cove and Hemlock Heading at the west end of the Bay, Sand Island in mid-Bay and Smith Point at the eastern end all are very pleasant overnight locations. All it takes is a few phone calls to organize a weekend rendezvous.

In recent years, much of the cruising has been done by a hard core of incurable salts. We think a lot of members are missing some of the most satisfying relaxation they've ever had on the water. We'd like to see more of them out. It's surprising how much fun you can have on a little boat – particularly when cruising!

In Memoriam
Lindsay R. Henry
1901 – 1959

PROGRAM FOR 1959

February 14	Annual Dinner Dance	Southward Ho Country Club
June 7	Commissioning Day	Babylon Yacht Club
June 20	Bay Shore Invitation Regatta Rendezvous, Lawrence Creek	Bay Shore Yacht Club
June 26	Opening Meeting	La Grange
June 27	Ladies' Day Race Rendezvous, Babylon Yacht Club	Babylon Yacht Club
July 4	Independence Day Regatta Rendezvous, Babylon Yacht Club	Babylon Yacht Club
July 11 to July 19	Eighth Annual Cruise	Great South and Peconic Bays
July 25	West Island Race Rendezvous, Great River	Nicoll Bay - West Island
July 27 to August 1	GSBYRA Race Week SBCC Cruise	Amityville to Westhampton
	Official Races for Cruising Club: July 28, Babylon July 29, Bay Shore July 30, Point O'Woods Rendezvous each night at Fleet Anchorage	
August 8	Foulke Trophy Race (Night Race)	Babylon to Bellport & return
August 22	Smith Trophy Race	Sayville
September 5 to September 7	SBCC Labor Day Cruise and Commodore's Cup Race	
September 4 September 5	Informal Race Commodore's Cup Race Rendezvous, Smith Point	Babylon to Great River Timber Point to Bellport
September 12	Children's Day Joint-rendezvous with Babylon Yacht Club	Whirlpool Point
September 26	Annual Clam Bake	
October 10	Fall Cruise	Garbage Cove
October 24	Fall Cocktail Party and Trophy Presentation	
November 13	Fall Meeting and Film Showing	

CRUISING INFORMATION

Three cruises this year have been designated as "official" SBCC events, and participation in all three will win the skipper a special medallion for mounting on a bulkhead of his craft. Cruises are the Eighth Annual Cruise, the Great South Bay Yacht Racing Association's Regatta Week, and the Labor Day Weekend at Smith Point.

The Annual Cruise will be sailed in three parts: one group of boats leisurely gunk-holing about the South Shore bays; another clutch going through the Shinnecock Canal and out to Gardner's Bay; and a third fleet sailing out the Shinnecock Inlet to Block Island and beyond.

All skippers who wish to enter the Club's first Cruising Competition will be required to keep a log of their cruises from Commissioning Day through the Fall Cruise. Awards will be made on the basis of the extent of each skipper's cruising activities.

RACING INFORMATION

Major change in the Club's racing system is a division of the fleet of active racing boats into thirds, based on the size of the craft's time allowance. This is a trial measure, designed to keep boats with approximately the same handicap racing against each other, and will be evaluated by the Board of Governors later in the season. Class X is not affected by this re-designation of Classes A, B and C; but the class will race this year under a measurement rule handicap alone, without the performance factor which still applies to the rest of the fleet.

Skippers not having a class assignment in the Fleet Roster will receive a temporary one from the Committee Boat the first time they race. After performance can be determined by sailing several races, they will be given a permanent class.

As in the past, all races will be sailed under North American Yacht Racing Union rules (with the exception of the regulation banning burgees and flags of racing craft) which provide that a yacht's time will be taken when any part of her hull crosses a finish line.

Starting guns will be fired at five minute intervals, and the start will consist of WARNING Gun; PREPARATORY Gun; STARTING Gun; Class C; Class B; Class A; Class X.

Recall and other signals will be flown from the Committee Boat and will consist of two guns, followed by:

Signal flag "N" (blue and white checkered flag) – Race called off.

Signal flag "S" (white flag, blue square) – Course shortened; finish here.

Signal flag "P" (blue flag, white square) – Start postponed. Warning gun will be fired 30 seconds after this signal is lowered. Postponements will be for periods of 15 minutes.

Information on GSBYRA Regatta Week will be contained in the GSBYRA Yearbook.

COURSES

BAY SHORE INVITATION: WARNING Gun – 1300. Start established by Committee Boat off Lawrence Creek; to Nun No. 6, East of Captree Bridge; to

Red Flashing No. 4, off Nicoll Point; return to finish line, leaving Flashing No. 1, off Bayberry Point, Islip, to starboard. Leave all other marks to Port.

LADIES' RACE: WARNING Gun - 1300. Start established by Committee Boat off Babylon Yacht Club; to Flashing No. 7 at head of Oak Beach Channel; through center span of Captree Bridge to Nun No. 6, East of Bridge; return through center span to finish. Leave all marks to Port.

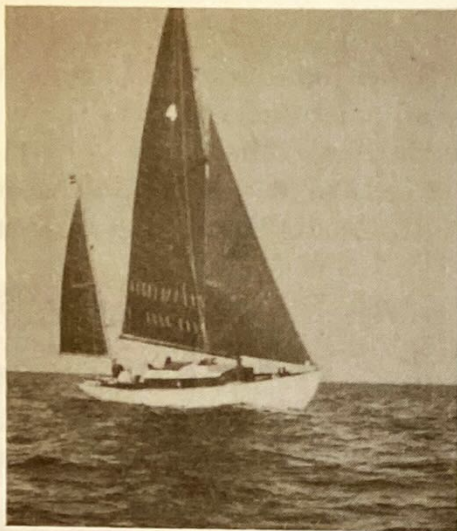
BABYLON INVITATION: WARNING Gun - 1300. Start established by Committee Boat off the Babylon Yacht Club; through the center span of Captree Bridge to Flashing Red No. 2, South of Champlin Creek, Islip, leaving Nun No. 6 and Flashing Red No. 10 to Starboard; to Black and White S-L Flasher off Great Cove, Bay Shore; return to finish through the center span of the Bridge. Leave all marks to Port.

WEST ISLAND RACE: WARNING Gun - 1300. Start established by Committee Boat in Nicoll Bay; passing around Red Flashing No. 10 off Bay Shore; Red-Black Quick Flash off Saltaire (keeping North of Flashing Red No. 8 no matter which direction course is sailed); Flashing Green No. 15 off Point O' Woods; return to finish line established by Committee Boat in Nicoll Bay. All marks left to Port. Course may be sailed in the opposite direction, with all marks left to Starboard.

FOULKE TROPHY RACE: WARNING Gun - 1800. Start established by Committee Boat in the proximity of Flashing No. 7 in mid-Bay off Babylon Cove; through center span of Captree Bridge; through Dickerson and West Channels, observing established government buoys and passing them on proper side; round Red-Black Quick Flash off Saltaire to Port; round Flashing Red No. 8 to Starboard; round Flashing Green No. 15 off Point O' Woods leaving it to Port; round Flashing Red No. 18 leaving it to Starboard; keeping North of Flashing Red No. 32 off Patchogue Bay; round Flashing Green No. 1 off Howell Point to Port; returning up the Bay, keeping North of Flashing Red No. 32, through center span of Captree Bridge to finish off Babylon Yacht Club.

SMITH TROPHY RACE: WARNING Gun - 1400. Start established by Committee Boat off Sayville; to Flashing Red No. 18 off Point O' Woods; to Flashing Green RB No. 1 off Patchogue Bay; return to finish; leave all marks to Port.

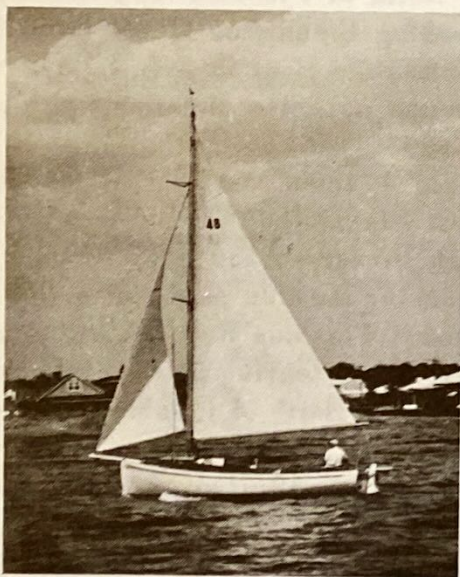
COMMODORE'S CUP RACE: WARNING Gun -- 1300. Start established by Committee Boat in Nicoll Bay; to Flashing Green No. 15 off Point O' Woods leaving it to Port; to Flashing Red No. 18 leaving it to Starboard; to a finish line established by the Committee Boat in the vicinity of Howell Point.



NO. 4 REVERIE



NO. 25 CHAPPY



NO. 48 AMBERJACK



NO. 109 DIANA



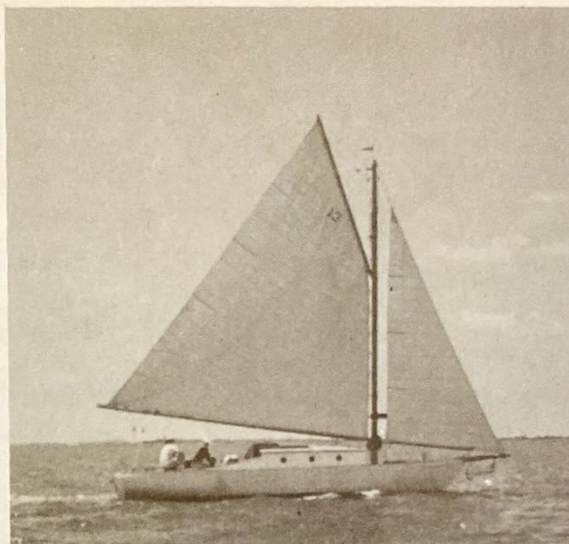
NO. 68 MANX



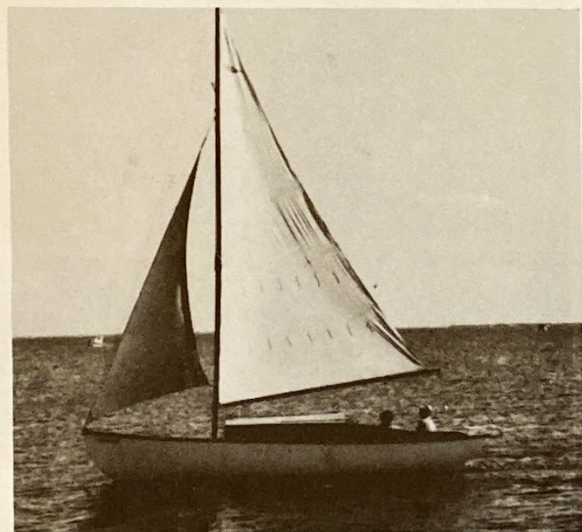
NO. 63 SASSENACH



NO. 33 RANGER



NO. 13 FALCON



NO. 41 NANCEE



NO. 14 SEAFARER



NO. 29 LIVELY LADY II



NO. 18 MORNING STAR



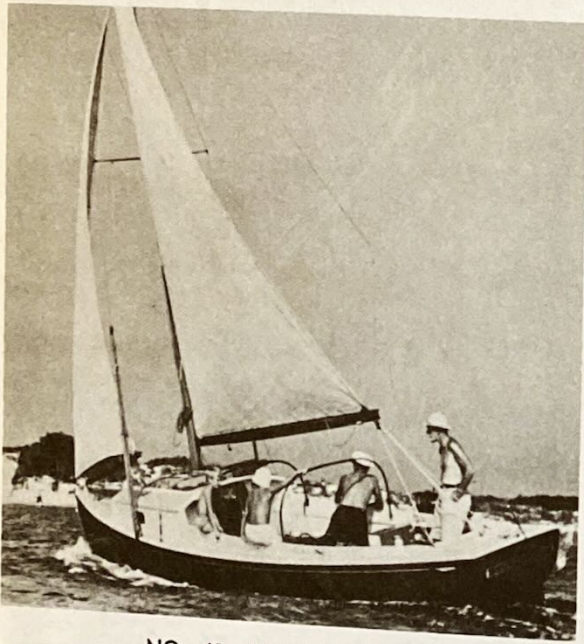
NO. 73 TAILWIND



NO. 28 BLUE JACKET



NO. 87 BETTY



NO. 43 SPICY ISLES



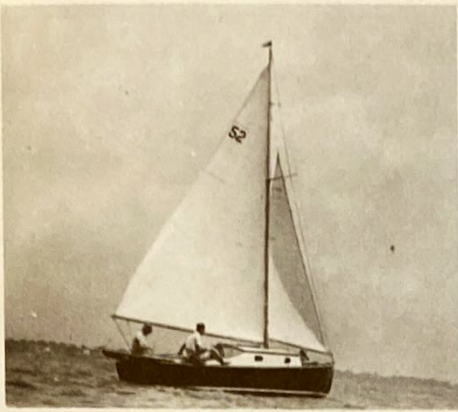
NO. 100 UNINVITED



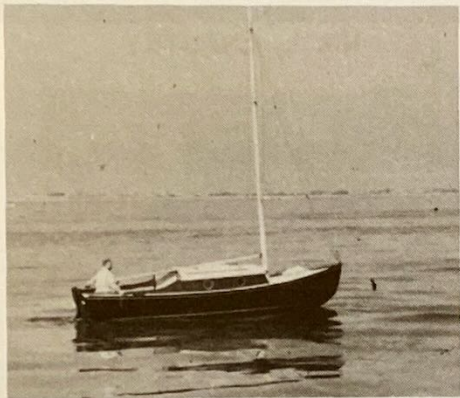
NO. 122 CHANCE



NO. 88 ALLEGRO



NO. 52 HALCYON



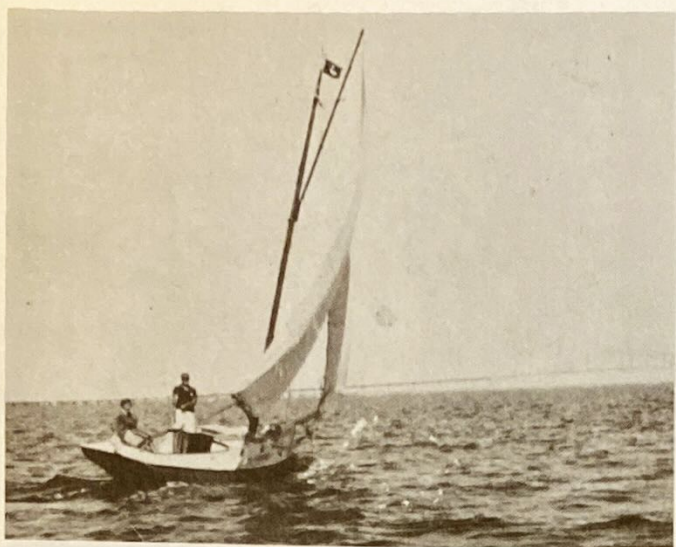
NO. 26 GANNETT



NO. 19 SEA WITCH



NO. 84 EXTRA DRY



NO. 44 CYGNET



NO. 15 CHANTEY



NO. 61 CATAUMET



NO. 75 WOODEN WORLD



NO. 127 HORNPIPE



NO. 3 MAUMAC



NO. 53 LADY LOU V



NO. 16 PERIWINKLE



NO. 45 WINDWARD



NO. 2 TONDELAYO



NO. 21 CHICO



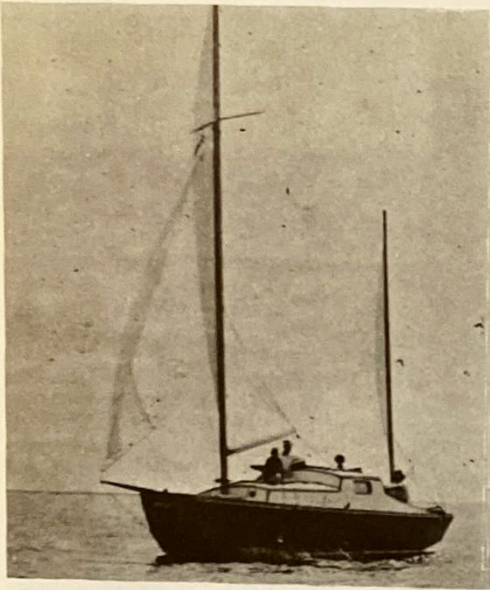
NO. 106 BRANDY



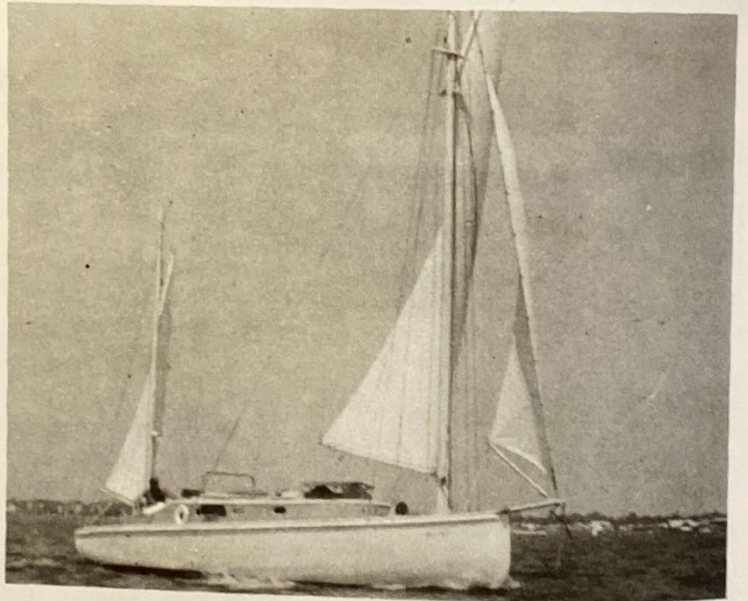
NO. 6 INDEPENDENCE



NO. 22 BEAR



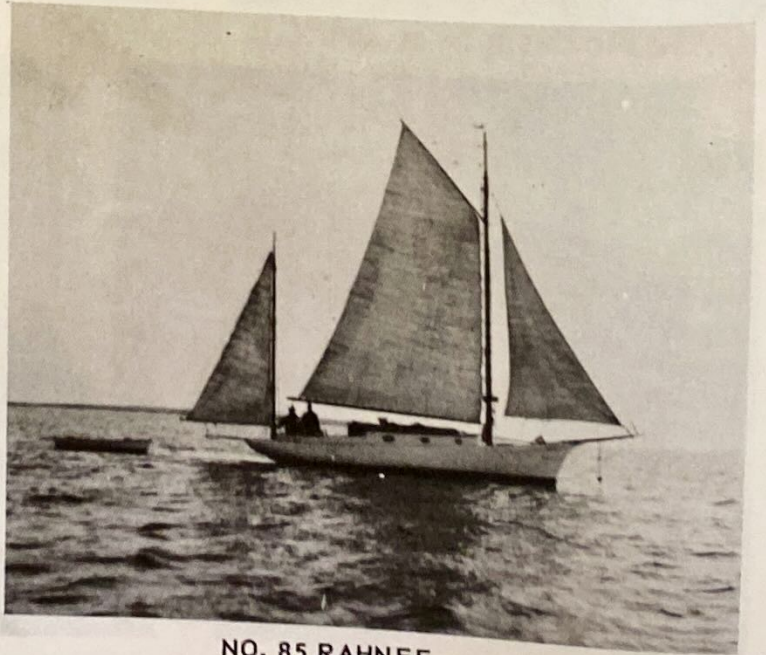
NO. 93 WHIMSEY



NO. 7 KATINKA SR.



NO. 92 MADCAP II



NO. 85 RAHNEE



NO. 31 STAR DUST



NO. 79 SYREN III



NO. 8 LORRAINE



NO. 35 BAYBEE



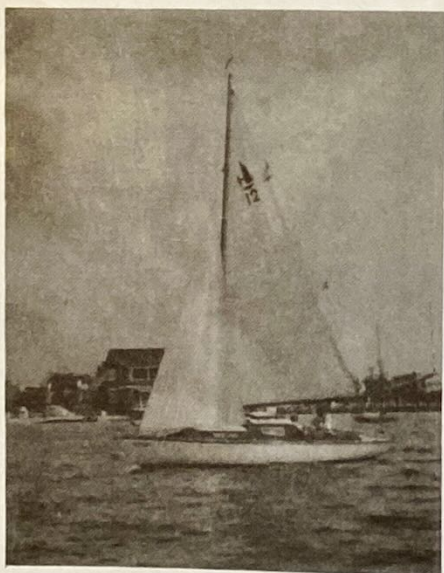
NO. 110 SAGA



NO. 9 GOLDEN EAGLE



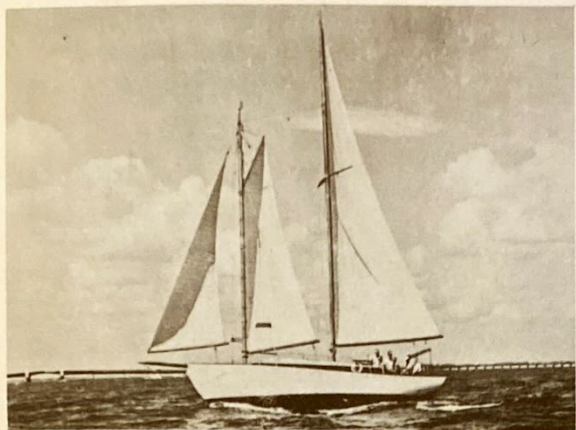
NO. 95 MALLARD



NO. 89 SPINDRIFT



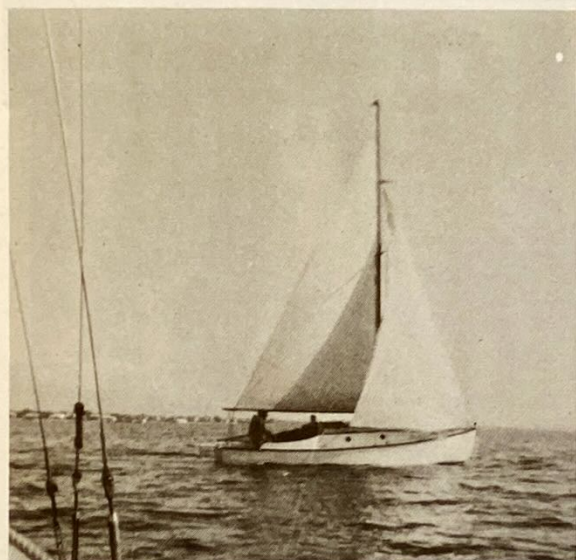
NO. 70 LORELEI



NO. 144 HISPANIOLA



NO. 108 KATYDID



NO. 136 RAMPER



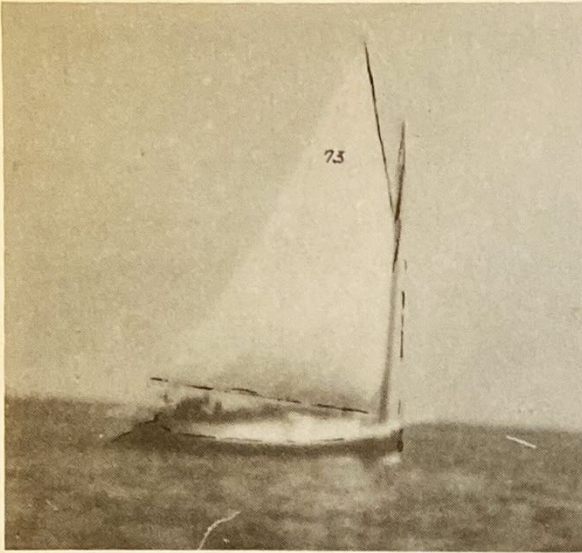
NO. 114 SEAROVER



NO. 42 SNARK



NO. 128 KNOT



NO. 73 NAIAD



NO. 129 THREE SISTERS



NO. 96 NANCY III



NO. 49 SPARKLING WATERS



NO. 57 JAFFALIN



NO. 66 HARPOON



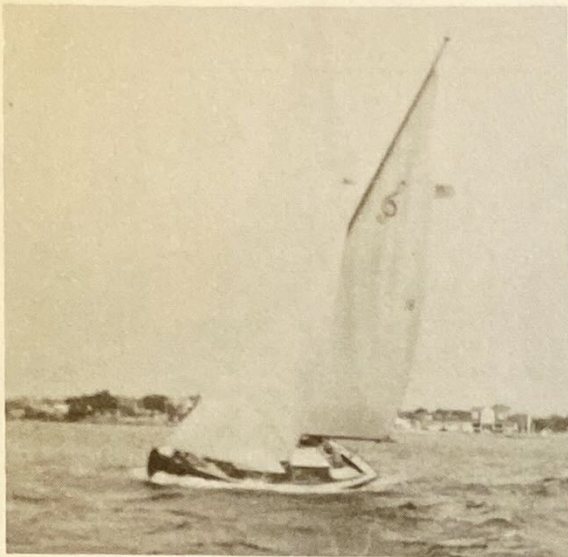
NO. 151 DUTCHESS



NO. 135 ERRANT



NO. 113 RUTH



NO. 62 LIVELY LADY



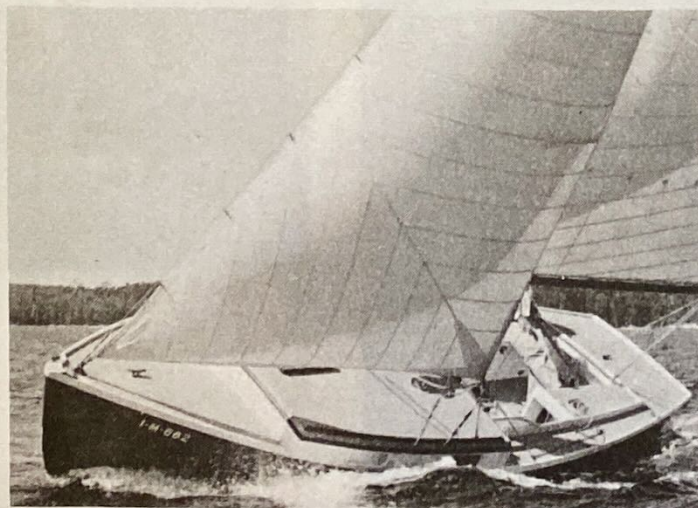
NO. 130 WINDBLOWN



NO. 120 LORNA DOONE



NO. 152 SPINDRIFT



NO. 117 SUMAKA III

S. B. C. C. FLEET

NO.	NAME	OWNER	RIG	LOA	DRAFT	CLASS	ALPM*	DESIGNER
1	Tondelayo	Deale	Cat	26	3		151	Crosby
2	Maumac	Boettger	Ywl	36	3½	A	76	Mower
3	Reverie	Young	Ywl	40½	4	A	51	Cox & Stevens
4	Cricket	Spear	Ywl	40				
5	Independence	Hard	Schr	50	6¾			A. Mason
6	Katinka Sr.	Smith	Ywl	35	3½		71	Lawley
7	Gardaloo	S. Baldwin	Ketch	36	2½			Crocker
8	Golden Eagle	Post	Schr	33	3	A	98	Smith
9	Teezim	Zimmerman	Cat	24	2½		134	Schwartz
10	West Indian	Cain	Ktch	28	3½			Herreshoff
11	White Cap	Carl	Slp	32	2½	A	64	Mower
12	Falcon	Wyckoff	Slp	36½	3¼		28	Wicks
13	Seafarer	Henderson	Slp	26	3½		250	
14	Chantey	Baldwin	Slp	30	3¼	A		Stephens
15	Periwinkle	Hack	Slp	32	3	A	80	Hack
16	Tradewinds	Thall	Ktch	32	3	B	145	Munroe
17	Morning Star	Smith	Ktch	33	3	B	144	Smith
18	Sea Witch	Brayshaw	Slp	25	4	C	182	Dill
19	Judy	Hansen	Slp	26	2½	C	175	Crosby
20	Chico	Braddon	Slp	26	3	C	211	Crosby
21	Bear	Becker	Cat	24	2		213	Crosby
22	Manana II	Holwell	Slp	22	1½	C		Delorie
23	Mehitabel	Bloodgood	Cat	16	1½	C	195	
24								
25								
26	Gannet	Wayland	Slp	21	2		154	True
27	Finnisterre	Bennett	Slp	23½	3½		173	C. McGregor

* Seconds per mile

S. B. C. C. FLEET

NO.	NAME	OWNER	RIG	LOA	DRAFT	CLASS	ALPM*	DESIGNER
28	Blue Jacket	Blue	Slp	26	2		200	White
29	Lively Lady II	Dupree	Slp	23	3	B	131	Crocker
30	C'est la Vie	Baxter	Slp	22 ³ / ₄	3 ¹ / ₄		118	Schneider
31	Stardust	Klesick	Ketch	28	2			Van Dyke
32	Danza	Loomie	Slp	23 ¹ / ₂	2 ¹ / ₂	B	111	Carlson
33	Ranger	Plauth	Ctr	34 ¹ / ₂	4	A	000.0	Atkin
34	Semiramis	deMurias	Slp	26	3 ¹ / ₄	C	185	Bergwall
35	Bay Bee	Wragge	Slp	24	2	C	277	N. E. Marine
36								
37	Lotus	Jennings	Slp	38	2 ¹ / ₂			
38	Refrain	Berdolt	Slp	23 ¹ / ₂	4	B	165	Farrell
39	Vixen	Block	Slp	24	2	X	94	
40	Shrimp	Faas	Cat	23	2 ¹ / ₂	C	230	Crosby
41	Nancee	Bradt	Slp	26	2	C	195	Meyer
42	Snark	Wanser	Slp	26	3 ¹ / ₂		87	Eldredge-McInnis
43	Spicy Isles	Hamlin	Slp	23	1 ¹ / ₂		150	Hamlin
44	Cygnets	Swan	Slp	26	3 ¹ / ₂	C	195	
45	Windward	Sprague	Slp	24 ¹ / ₂	2 ¹ / ₄		84	Sweisguth
46								
47	Portia Too	Jones	Slp	21	2			Crosby
48	Amberjack	Grimes	Slp	24	2		99	Sprague
49	Sparkling Waters	Pasch	Slp	31	2 ¹ / ₂	B	130	Brockway
50	Compromise	Underhill	Slp	29	3 ¹ / ₃			Alden
51								
52	Halcyon	Davis	Slp	21	2	C	178	Wm. Crosby
53	Lady Lou V	Beinert	Cat	22	2 ¹ / ₂	B	163	Sweisguth
54	Cutty Sark	Norton	Ktch	36	3 ¹ / ₂	A	29	Mower

S. B. C. C. FLEET

NO.	NAME	OWNER	RIG	LOA	DRAFT	CLASS	ALPM*	DESIGNER
55	Eos	Stickley	Slp	23	2		170	Dickerson
56	Scamp	S. Paterson	Slp	30	2½	X	32	Wicks
57	Jaffelin	Crosby	Slp	30	4		158	Van Breens
58	Snookie	Kent	Slp	25	2		82	Ketcham
59	Sun-Glo	B. Garben	Slp	23	1½		114	True
60	Marion K-II	Bernichon	Slp	32	¾	A	57	Alden
61	Cataumet	Howell	Cat	22½	2½	C	171	Crosby
62	Lively Lady	Moore	Slp	23½	4	B	165	Farrell
63	Sassenach	Held	Ktch	33½	2½	C	168	Dickerson
64	Hippo	Young	Cat	17	2	C	302	Crosby
65	Rete	Gorman	Slp					
66	Harpoon	Wissmann	Ctr	26	3	B	151	Wissmann
67	Wooden World II	Streit	Ketch	36	¾			Crocker
68	Manx	Herzeca	Cat	22	¼	B	130	Sweisguth
69	Triton	Hildreth	Slp	22	2½		156	Kohman
70	Lorelei	Lawrence	Slp	32	3	A	41	Crosby
71	Roman Holiday	Moran	Slp	30	3	A	75	Van de Stadt
72	Southern Cross	Macy	Slp	34	¾		47	Mower Interclub
73	Naiad	Gauch	Cat	26	2½			Crosby
74	Moonshine	Hayward	Slp	22	¾	C	200	Herrschoff
75	Wooden World	Eberle	Schr	32	2½			
76	Trollop II	Ricketts	Cat	18	2		200	Crosby
77	Chispa	R. Garben	Slp	15		X	215	
78	Harvey	Voorhies	Slp	20	1½	C	193	Atkin
79	Syren III	Worden	Ywl	26	3		99	Wetherall
80	Gull	Picken	Ktch	36½	4	A	58	Winslow
81	Pipsqueak	Davison						

S. B. C. C. FLEET

NO.	NAME	OWNER	RIG	LOA	DRAFT	CLASS	ALPM*	DESIGNER
82	Caprice	Jack	Slp	21	2 $\frac{1}{2}$			Crosby
83	Flomared	Henkel	Slp	18	1 $\frac{1}{2}$	A	108	Cape Cod
84	Extra Dry	Davies	Slp	24	3 $\frac{1}{2}$			Davies
85	Rahnee	Fuller	Ywl	39	3			C. and W.
86	Minx	Berkowitz	Slp	22	2	C	113	Ketcham
87	Betty	Ketcham	Slp	18	2 $\frac{1}{2}$		179	Cox & Stevens
88	Allegro	Nutzhorn	Slp	23	2	X	130	Van de Stadt
89	Spindrift	Tarr	Slp	25	3 $\frac{1}{4}$	B	145	Crosby
90	Nereid	Kraker	Cat	22	2 $\frac{1}{2}$	X	156	Islip One-Design
91	Blue Dolphin	Ronald	Slp	32	3		99	N. E. Marine
92	Madcap II	Roberts	Slp	25	4	C	97	
93	Whimsey	Wimmerstedt	Slp	28	3		183	
94		Hangarter	Slp	18	1 $\frac{3}{4}$			Herbulot
95	Mallard	Palmer	Slp	25	2 $\frac{1}{2}$	B	113	Hamlin
96	Nancy III	Peterson	Slp	24	2 $\frac{1}{2}$		120	N.E. Marine
97	Tideways	Hayward	Ketch			B	146	
98	Grayling	Ince	Cat	22	2		110	Andersoson
99	Tranquil	Dannemiller	Slp	34	2		146	
100								Farrell
101	Cadenza	Livinaston	Slp	23 $\frac{1}{2}$	2 $\frac{1}{2}$		165	
102	Renee	Nepo						
103	Tattoo	Hyde	Ctr	30			44	
104	Rubato III	Schnell	Slp	28	5			Stephansen
105	Blue Teal	Picoli	Slp	23 $\frac{1}{2}$	2 $\frac{1}{2}$		165	Farrell
106	Brandy	R. Paterson	Ktch	27	3	C	238	Royal Navy
107	Sea Song	Grauer	Cat	15	1 $\frac{1}{3}$			Withholz
108	Katydid	Prince	Slp	26	2 $\frac{1}{2}$		102	Hamlin
109	Diana	Spieß	Slp	27 $\frac{3}{4}$	3 $\frac{1}{6}$	B	115	McGregor

S. B. C. C. FLEET

NO.	NAME	OWNER	RIG	LOA	DRAFT	CLASS	ALP ^M *	DESIGNER
110	Saga	Tilden	Slp	23	2	X	154	Cox & Stevens
111	Trade Winds	Purcell	Slp	22			150	
112	Querida	Cameron	Slp	33	2½	X	37	
113	Ruth	Gottwald	Slp	30	2½	A	54	Wrieole
114	Sea Rover	Logan	Cat	26	2½		128	
115	Southwind	Sparling					146	
116	Vim	Ciocys	Slp	19¾	3¾	X	139	
117	Sumaka III	Eggerstedt	Slp	26	2½	A	94	Hamlin
118	Mijo	Wornock	Slp	18	1½			Crosby
119		Palmer	Slp	19	2½			Wingerath & Smith
120	Lorna Dorne	Thorne	Slp	33	3	A	20	Sparkman & Stephens
121	Marita	Shoemaker	Slp	23½	4		165	Farrell
122	Chance	Merry	Ktch	26	2½			Monomoy Whaler
123	Vivace	Parker	Slp	19½	1½	X	142	Sparkman & Stephens
124	Pools	Schwindt	Slp	28	3½	A	96	
125	Hope	Tzucanow	Slp					
126	Mareca	Whittaker	Slp	34	4	A		Whittaker
127	Hornpipe	O'Reilly	Schr	32	3½		67	
128	Knot	Miles	Slp	21	1½	X	152	Mower
129	Three Sisters	Pallas	Cat	21	1½	X	154	Smith
130	Windblown	Jonas	Ketch	35	3½		33	Dickerson
131	Uni	Rague	Slp	24	3½		81	Lindros
132	Polaris	Vogel	Slp	20	2½			Adriatic
133	Blue Peter	Dunckelmann	Slp	23½	4	B	165	Farrell
134	G-String	Horn	Cat	17	2	X	210	

S. B. C. C. FLEET

NO.	NAME	OWNER	RIG	LOA	DRAFT	CLASS	ALPM*	DESIGNER
135	Errant	Seidenberg	Slp	26	2	C	202	Meyer
136	Ramper	Pullis	Slp	21	2		219	William Crosby
137	Oriana	Miligi	Yawl	32	3 ¹ / ₃	B	116	Hunt
138	Edput III	B. Max	Sch	36			76	
139	Aeolus	Haberman	Slp	24		C		A. R. True
140	Irish Mist	Lyons	Slp	23	1 ¹ / ₂			True
141	Quest	Bernichon	Slp	23	2 ¹ / ₂	X	120	Cox & Stevens
142	Nor Easter	Boyd	Yawl	32	3 ¹ / ₂	A	68	Mower
143	Prancer	Hamlin	Slp	23	2 ³ / ₄			Mace Eaton
144	Hispaniola	Poor	Sch	37 ¹ / ₄	3 ¹ / ₂	A	53	Alden
145	Syren	Levy	Cat Ktch	33 ¹ / ₂	1			Chapelle
150	Viking	Spollen	Slp	26	3 ¹ / ₂			J. Bloess
151	Dutchess	Stamper	Slp	24	2 ² / ₃	X	96	Sweisguth
152	Spindrift	Ramsdell	Slp	23 ¹ / ₂	2 ¹ / ₂	B	165	Farrell
153	Comet	Dauch	Slp			X	177	Comet
154	Fun	Love	Slp	23	2			Ketcham
155	Escape	Palmer					152	
156	Windsong	Rosenberg	Slp	23 ¹ / ₂	2 ¹ / ₂			Farrell
157	No. 2088	Patch	Slp	19 ¹ / ₂	1 ¹ / ₂	X	142	Sparkman & Stephens
158	Leander	Martin	Slp	23	1 ¹ / ₂			A.R. True

SUMMARY OF 1958 ACTIVITIES

After a monsoon-like spring, which delayed the early commissioning of many craft, the South Bay Cruising Club embarked on a successful ninth season of cruising, racing and social events. Highlights of the year were, in order of best remembrance: Miserable racing weather, a truly monster clam bake, and an Annual Cruise and GSBYRA Regatta Week that saw greater-than-ever participation by Cruising Club members. More than a hundred members turned out for Commissioning Day at the Babylon Yacht Club on May 31.

Other highlights were: The annual fireworks display off Amityville on July Fourth, the flowering of the Blue Jay Fleet on the Bay (originally inspired by SBCC members), the increasingly larger numbers of Cruising Club craft gunkholing on weekends, the Children's Day party on newly-erupted Shell Island, and the fine Fall Cocktail Party at the Cedar Lane Boatyard through the generosity of Jack Cate.

BAY SHORE INVITATION REGATTA - JUNE 21

A small but hardy fleet braved damp and frustrating northerly weather to race in the Bay Shore Yacht Club's annual Invitation Regatta. Order of finish on corrected time was: Class A: Golden Eagle, Morning Star, Lorelei, Gull, Tradewinds, Sparkling Waters, Nor'Easter.

Class B: Spindrift, Diana, Danza, Lady Lou V, Cataumet, Semiramis, Sumaka II, DNF - Whimsey.

Class C: Betty, Nancee, Brandy, DNF - Shrimp.

BABYLON INVITATION REGATTA - JULY 5

Great South Bay's tradition for heavy weather returned for the second race of the season held off Babylon during the BYC's annual Fourth-of-July Regatta, which also saw a number of Cruising Club members competing in one-design classes. A sou'easter boomed up the Bay and gave the 26 starters in the Cruising Class enough weather to compensate for the light air prevailing during the season's opener. Results were: Class A: Tradewinds, Lorelei, Golden Eagle, White Cap, Periwinkle, Sparkling Waters, Extra Dry, Nor'easter, Tideway.

Class B: Cataumet, Diana, Amberjack, Semiramis, Spindrift (Tarr), Sasanach, Lady Lou V, Blue Peter, Spindrift (Ramsdell) Harpoon.

Class C: Sea Witch, Shrimp, Betty. DNF - Cygnet, Chico, Nancee.

Class X: DNF - Saga.

SEVENTH ANNUAL CRUISE - JULY 12 to 20

The 21-boat fleet divided itself into two groups for the Club's annual cruising, boozing and snoozing festival. One group chose the intrepid route of the marlin and cod and sailed off to Block Island and on up to explore the beauties of the Cape Cod area. The mast-hauling association, who took the route of the bad-tempered fishermen through the Shinnecock Canal, were pretty well locked into Peconic and Gardner's Bays by foggy weather. This latter group did not lack for derring-do, however, as testified by a large mess of succulent scallops of questionable legality and an equally delicious chowder of equally illegal clams. Bobby Carl's Sea Wind and Bill Peck's Wahoo II served as the Good Shepherds. All the Sea Wind needed was a string of Japanese lanterns and a pagoda to look like a sea-going lawn party, as the faithful gathered each evening on her afterdeck for sun-downers. Yachts on the cruise were: Katinka, Sr., Morning Star, Amberjack, Golden Eagle, Nor'Easter, and Topper composing the Block Island-Cape Cod fleet; Lady Lou V, Katydid, Bear of Babylon, Seafarer, Sea Wind, Wahoo II, Bay Bee, Windsong, Mallard, Whimsey, Southern Cross, Chance, Reverie, Luna, and Brandy, the Peconic-Gardner's Bay fleet.

WEST ISLAND RACE - JULY 26

The Club's annual regatta attracted 28 craft who sailed the course around the Fire Islands in a foggy, Southeast breeze. One interesting feature of this race is that the course may be sailed in either direction. While most skippers chose to sail the course from South to West, two out of the first three boats in Class A split with the fleet and took the West-to-South route. Dick Trainer's Sea Rover was awarded the Fred Schnurr Perseverance Trophy for the last craft to finish. Results were: Class A: Katydid, Extra Dry, Lorelei, Tradewinds, Golden Eagle, Hispaniola, Sparkling Waters, Reverie, Periwinkle, Morning Star.

Class B: Diana, Mallard, Lady Lou V, Spindrift, Amberjack, Refrain, Danza, Cataumet, Harpoon, and Sea Rover. DSQ - Whimsey, Sassanach.

Class C: Sea Witch, Errant, Nancee, Brandy, Halcyon. DNF - Shrimp.

GSBYRA REGATTA WEEK - JULY 28 - AUGUST 2

The Cruising Club was well represented among the nearly 250 racing boats and countless numbers in the spectator fleet that turned out for the Association's largest and most successful race week. A special series of four races were held for Cruising Class Boats with the following results: Classes A, B and C: Spindrift, Hispaniola, Roman Holiday, Cataumet, Errant, Pools, Blue Peter, Refrain, and Shrimp.

Class X: Chispa, Dutchess, Vim.

FOULKE TROPHY RACE - AUGUST 16

For a good part of the weekend of August 16-17, 31 craft drifted about on the Bay in a very light Easterly breeze, trying to negotiate the course of the Night Race from Babylon to Bellport and return. Results were: Class A: Marion K II, Roman Holiday, Hispaniola, Lorelei, Southern Cross, Extra Dry, Mauama, Reverie. DNF - Morning Star, Tideway.

Class B: Spindrift (Tarr), Danza, Refrain, Whimsey, Harpoon, Sassanach, Lady Lou V, Spindrift (Ramsdell). DNF - Chappy, Cataumet, Diana, Tranquill.

Class C: Sea Witch, Chico, Brandy, Sea Gull. DNF - Errant, Shrimp.

LABOR DAY WEEKEND - AUGUST 30 - SEPTEMBER 1

The combination cruising and racing weekend over the Labor Day Weekend attracted some 30 craft - most of them completely fitted out with children - to rendezvous at Smith Point, Great River and Sunken Forest. In the Commodore's Cup Series of two races, 29 craft competed the first day, but a heavy Southwest blow cut the fleet considerably for the second day's racing. Results were: Smith Memorial Trophy: Hispaniola.

Commodore's Cup Series: Class A: Hispaniola, Roman Holiday, Maumac, Oriana, Tideways. Class B: Diana, Class C: Shrimp.

LADIES' RACE - SEPTEMBER 27

The foul weather that dogged most of the Club's regattas during the season was present again as the ladies took over the helm for their race off the Babylon Yacht Club. Marie Faas was the overall fleet winner and the victor in Class C. Following the race, Stu Paterson and his Entertainment Committee staged a Monster Clambake, complete with Seraphic Steamers and Lucullan Lobsters, which was deemed one of the top gatherings of the season and should prove to be a popular annual event.

Results of the Ladies' Race: Class A: Hispaniola, Sparkling Waters, Lorelei, Reverie, Extra Dry, Tradewinds, Maumac, Tideway.

Class B: Spindrift, Whimsey, Sea Witch, Tranquil, Amberjack, Harpoon, Manx, Refrain.

Class C: Shrimp, Halycon, Cygnet, Brandy. DNF - Mehitabel.

Class X: Allegro.

MEMBERS - 1958

Donald M. Armstrong	(Mary)	32 Village Line Rd.	Babylon
G. Gorton Baldwin	(Florence)	84 West Islip Rd.	Babylon
G. Gorton Baldwin, Jr.		188 West Islip Rd.	Babylon
Stuart Baldwin	(Sarah)	146 Araca Rd.	Babylon
Walter F. Batten	(Reba)	93 Lakeland Ave.	Babylon
Arthur E. Baxter	(Anita)	21 Totten Place	Babylon
Reginald Beech		47 South Awixa Ave.	Bay Shore
Frederic A. Becker	(Pat)	64 Cormack Court	Babylon
John D. Beinert	(Helen)	32 Robert Street	Babylon
R. H. Bennett		132 Exeter Rd.	Massapequa
John P. Berdolt	(Margaret)	5 Barry Road	Amityville
Sidney Berkowitz	(Harriet)	119 Elm Street	Woodmere
Clay Bernichon	(Marion)	98 Sequams Lane, West	West Islip
Chester Blakelock	(Marjorie)	Belmont State Park	Babylon
Winthrop R. Block		837 East Bay Drive	West Islip
Freeman Bloodgood	(Rose)	154 Cedar Lane	Babylon
F. Richard Blue	(Florence)	153 Eaton Lane	Babylon
F. Richard Blue, Jr.	(Molly)	324 Fire Island Ave.	Babylon
Macklin Boettger	(Maureen)	123 Araca Rd.	Babylon
Richard Boyd		South Bay Ave.	Islip
Fred Braddon	(Evelyn)	70 Village Line Rd.	Babylon
William F. Bradt	(Penny)	179 Sequams Lane	West Islip
W. S. Brayshaw	(Ruth)	100 Peninsula Drive	Babylon
Arthur Briggs		Oak Neck Lane	West Islip
William C. Cain	(Gloria)	4411 St. Charles Ave.	New Orleans, La.
Alfred W. Callahan, Jr.		10 West Bay Drive	West Islip
A. Duncan Cameron		31 Mowbray Avenue	Bay Shore
Robert Carl	(Gen)	206 Woodsome Rd.	Babylon
William P. Carl, Jr.		St. Marks Lane	Islip
Clayton R. Carmen		133 Sequams Lane	Babylon
Austin J. Cate	(Evie)	156 Cedar Lane	Babylon
H. W. Chapman, Jr.		445 Richland Blvd.	Brightwaters
William F. Ciocys	(Frances)	24 Kittiwake Lane	Babylon
David H. Collins		75 S. Carl Ave.	Babylon
Robert T. Concha	(Eleanore)	175 Peninsula Drive	Babylon
Ralph C. Condit		202 Arnold Avenue	West Babylon
Eugene V. Connett		170 Turrell Ave.	South Orange, N.J.
John Crosby		115 Arthur St.	Garden City
Edward F. Dannemiller	(Jean)	175 Woodsome Rd.	Babylon
J. D. Darnell	(Jo)	116 Peninsula Drive	Babylon
Thomas E. Dauch	(Janet)	161 Montgomery Ave.	North Babylon
Frederick C. David		237 Bay 2nd Street	West Islip
Julien T. Davies, Jr.	(Janet)	45 Montrose Avenue	Babylon
G. R. Davis	(Carol)	503 Avon Place	West Islip
Raymond Davis, Jr.	(Anna)	Bergen Lane	Bluepoint
Oliver S. Davison		188 Windsor Pkway. W.	Oceanside
William H. Deale	(Florence)	40 Parkwood Rd.	Babylon
William DeBono		South Country Rd.	East Patchogue
David DeGraff		53 Greeley Avenue	Sayville

Ramon DeMurias	(Carlin)	74 Douglas Avenue	Babylon
Peter DeYoung		229 Sequams Lane Center	Babylon
Robert W. Dolan, Jr.		36 Merritt Street	West Islip
D. Cary Dodd	(Jeanne)	140 Cadman Avenue	Babylon
Paul Dunckelmann		134-23 243rd Street	Rosedale
Lansing T. Dupree	(Carolyn)	110 West Islip Rd.	Babylon
Robert C. Eberle	(Mary)	250 Fire Island Ave.	Babylon
Fred C. Eggerstedt, Jr.		1553 Kenneth Avenue	Baldwin
Charles ⁴ H. Ehlers, Jr.		365 Stewart Avenue	Garden City
Tom Elwell		157 Sequams Lane Center	Babylon
Charles W. Faas, Jr.	(Marie)	Eaton Lane	West Islip
Edward E. Farrell	("Pete")	504 Avon Place	West Islip
George W. Fear		51 Village Line Rd.	Babylon
Fred C. Fegley		25 Spray Lane	Hicksville
Harry P. Fishel		Eaton Lane	West Islip
Frank Freeman	(Beverly)	20 East 93rd Street	New York City
Fernley Fuller	(Norma)	39 Jones Drive	Sayville
Fredrick Gauch, Jr.	(June)	Connequot Drive	Oakdale
Bruce Garben		89 West Bayberry Rd.	Islip
Robert L. Garben		Candlewood Path, RFD #1, Dix Hills	Huntington
Joseph Gettler, Jr.		142 Browers Lane	Roslyn Heights
Walter H. Gibson	(Jessie)	74 Marion Place	Rockville Centre
Barrett C. Gilbert		43 Lawrence Lane	Bay Shore
Robert N. Gilmore, Jr.		41 Parkwood Rd.	West Islip
Garrett A. Goetschius		141 Melbury Rd.	Babylon
Arnold W. Golfman		92 Maple Ave.	Bay Shore
Francis deS. Gorman	(Margaret)	4 Bayside Place	Amityville
H. W. Gottwald		114 Shinnecock Ave.	Massapequa
Edwin Grauer	(Elaine)	28 Overton Place	Babylon
Millard F. Griffith		Avon Place	Amityville
Francis E. Grimes	(Polly)	153 Melbury Rd.	Babylon
Robert Haberman	(Grete)	95 Araca Rd.	Babylon
Joseph Hack		260 East Shore Drive	Massapequa
Gilbert Haight	(Marion)	183 Ocean Avenue	Amityville
Cyrus Hamlin			Manset, Maine
Marston L. Hamlin	(Charlotte)	251 Rocklyn Ave.	Lynbrook
Thomas E. Hanaway	(Nan)	56 Kingsland Pl.	Babylon
Theodore Hangarter	(Judith)	300 Willets Lane	West Islip
William G. Hansen		444 Deer Park Avenue	Babylon
Fred Hard		87 South Saxton Ave.	Bay Shore
Richard Hayward		163 Fire Island Ave.	Babylon
Alfred H. Heckel	(Joan)	185 West Islip Rd.	West Islip
Jack Held	(Joan)	70 Hewlett Court	Babylon
David Henderson	(Ann)	68 Araca Rd.	Babylon
E. E. Henkel	(Florence)	Widgeon Court	Great River
Lincoln Herzeca		50 S. Carll Avenue	Babylon
Arthur J. Hettich		52 Sequams Lane	Babylon
Walter R. Heymann		269 Lakeview Ave. West	Brightwaters
Pierson Hildreth	(Kathryn)	176 Riverside Ave.	Amityville

Sidney G. Holland	(Sara)	25 Caledonia Ave.	Babylon
F. S. Holwell	(Doris)	88 Purdy Lane	Amityville
Robert G. Holzmacher	(Ardith)	24 Lafayette Ave.	Amityville
Herbert E. Horn		60 Hamilton Avenue	Sayville
Edwin L. Horsley, Jr.		101 Sequams Lane	Babylon
John F. Horton, Jr.		174 Sequams Lane Center	Babylon
Elmer B. Howell, Jr.	(Suzanne)	Rural Route #1	New Canaan, Conn.
Rogers Howell	(Mary)	20 Dorset Lane	Babylon
R. C. Hunt	(Dolly)	Station B	Poughkeepsie, N.Y.
Carl Huus, Jr.		47 Hamilton Street	Sayville
John B. Hyde	(Katherine)	15 Old Tree Lane	Great Neck, N.Y.
G. R. Ince		115 Sackville Rd.	Garden City
Clinton F. Ingle		67 Woodsome Rd.	Babylon
Sydney F. Jack	(Dorothy)	8 Brixton Rd.	Garden City
Livingston Jennings		235 Secatogue Lane	West Islip
Harry Jonas	(Ruth)	1111 Park Avenue	New York City
Frederick B. Jones		2 Girard Avenue	Bay Shore
Richard P. Kent, Jr.	(Dorothy)	125 So. Merrick Ave.	Merrick
Hayden F. Ketcham	(Joan)	107 South Carll Ave.	Babylon
Paul Ketcham	(Muriel)	62 New Point Place	Amityville
Harry N. Klesick	(Catherine)	145 Baylawn Ave.	Copiague
H. Berkeley Knox	(Eleanor)	27 Sumpwams Place	Babylon
John Kraker	(Anita)	113 Vesper Court	Babylon
N. Gist Lamdin, Jr.		41 Sequams Lane East	West Islip
Bryan Lawrence	(Sue)	1 Virginia Avenue	Babylon
Robert T. Lawrence	(Shirley)	West Islip Rd.	West Islip
George LeSavage		Willow Dr. & Drury La.	Port Washington
Rollins LeSavage		62 Oak St.	Babylon
Ira W. Levy	(Olive)	180 Ocean Avenue	Bayport
J. W. Livingston	(Elizabeth)	Great River Rd.	Great River
Robert A. Locke	(Helen)	139 Sequams East	West Islip
Ralph W. Logan	(Norma)	28 Secatogue Lane	West Islip
Leo S. Loomie	(Araceli)	103 East 86th Street	New York City
Frank Lyons	(Jeanne)	256 Cravell St.	Hempstead
Robert A. Love		38 Bellport Lane	Bellport
Edward Macy	(Marie)	Trebar Road	Amityville
Byron S. Martin	(Lee)	303 East 71st St.	New York City
J. Paul Maynard		29 Garner Lane	Bay Shore
Boyd C. Max		12 Brightwaters Pl.	Massapequa
Terence P. McGuirk	(Gloria)	31 Southards Lane	Babylon
Patrick Meehan	(Bea)	214 Little East Neck Rd. South	Babylon
Howard R. Meinke	(Margaret)	548 N. Windsor Ave.	Brightwaters
Pierre Mercier	(Doris)	225 Tahlulah Lane	West Islip
George A. Merry	(Lois)	61 New Point Place	Amityville
J. Robert Michele		Totton Place	Babylon
Francis T. Miles		44 Bergen Lane	Bluepoint
Raymond Miligi, Jr.	(Lucille)	193 Tahlulah Lane	West Islip
Robert A. Moore		165-01 Union Turnpike	Flushing
Eugene F. Moran		235 Lake View Ave. W.	Brightwaters
Carl Mueller		Oak Neck Lane	Babylon

John M. Murphy		147 Melbury Rd.	Babylon
Morris Nepo	(Renee)	144 Pacific St.	Massapequa Park
F. Eugene Newbold, Jr.		St. Marks Lane	Islip
Nathaniel Norton		Seaman Avenue	Bayport
Carl Nutzhorn		23 Sherwood Rd.	Rockville Center
Robert S. Obrig	(Doris)	92 Peninsula Drive	Babylon
Bryan M. O'Reilly		112 Saxon Avenue	Sayville
Louis H. Orr, Jr.	(Libby)	40 Sequams Lane E.	West Islip
J. Vincent O'Shea, Jr.	(Helen)	40 Paumanake Ave.	Babylon
Richard C. Owen		27 Harbor Rd.	Babylon
George F. B. Owens		300 Maple St.	Islip
Frederick Pallas	(Adele)	60 Everett St.	North Patchogue
Charles B. Palmer	(Lois)	Ivy Lodge—Clock Blvd.	Amityville
Robert E. Palmer	(Eleanor)	173 Morris Avenue	Rockville Center
Winslow Palmer	(Marion)	8 Stuart Ave.	Amityville
Christopher J.A. Parker	(Patricia)	323 East 88th St.	New York City
Robert Pasch	(Fran)	42 Dundee Ave.	Babylon
Isaac Patch, Jr.		88 Douglas Ave.	Babylon
Robert L. Paterson	(Maggie)	43 Cormack Court	Babylon
Stuart Paterson	(Charlotte)	165 Annuskemunica Rd.	Babylon
Eugene W. Peck	(Eleanor)	9 Montrose Ave.	Babylon
Albert J. Peterson	(Eleanor)	101-13 Jamaica Ave.	Richmond Hill
Alexander T. Petrie		188 Sequams Lane Center	Babylon
Marshall W. Picken	(Barbara)	58 Thompson Ave.	Babylon
Robert C. Picoli	(Donna)	55 First St.	Garden City
William H. Plauth	(Esther)	19 Hildreth Rd.	Amityville
Edmund W. Poor		28 Garner Lane	Bay Shore
Henry A. V. Post	(Molly)	42 Dorset Lane	Babylon
Edward Prince	(Kay)	24 Talley Ho Lane	Alexandria, Va.
John G. Pullis		44 George St.	Babylon
Robert E. Purcell		3 Glen Road	Massapequa Park
Sanford Rague		21 Deeringwood Lane	Babylon
Roger G. Ramsdell, Jr.		28 Walnut Ave.	Rockville Center
Henry J. Rendich, Jr.		164 W. Main St.	Babylon
Peter Rhodes	(Helen)	14 Parkdale Drive	Babylon
Edward W. Ricketts	(Grace)	47 Dundee Ave.	Babylon
William John Roberts		78 Wagstaff Lane	Babylon
John C. Robbins		5 Girard Ave.	Bay Shore
Theodore K. Ronald		6 Prassan Ave.	Patchogue
Bud Rosenberg	(Harriet)	34 Secatogue Lane, E.	West Islip
Wallace C. Ross		13 Academy Lane	Bellport
Robert Roth	(Aileen)	109 Sequams Lane E.	West Islip
John McE. Sanderson		142 Sequams Lane W.	West Islip
Robert W. Schafer	(Nanette)	113 Lighthouse Rd.	Babylon
William A. Schnell	(Pauleen)	29 Post Lane	Southampton
B. W. Schwindt		46 Awixa Ave.	Bay Shore
Everett Seidenberg	(Teddy)	South Carll Ave.	Babylon
Horace W. Shoemaker		1530 Matheron Ave.	Baldwin
Robert F. Simes	(Ann)	247 Tahlulah Lane	West Islip
George J. Smith		57 Melbury Road	Babylon
Hervey G. Smith		76 Hampton St.	Sayville

Merritt L. Smith	(Janet)	169 Sequams Lane Center	West Islip
Howard Snyder	(Betty)	72 Shore Rd.	Babylon
David Southard		Willow St.	Babylon
Barrie D. Sparling		129 Hilton Ave.	Garden City
Arthur J. Spollen	(Marguerite)	26 River St.	Sayville
John Spear, Jr.		Wyandanch Lane	Amagansett
Newton E. Spiess	(Dess)	Fernwood Ave.	Oakdale
Ted Sprague		1140 East Rockaway Blvd.	Hewlett
Robert F. Stamper		448 Ackerson Blvd.	Brightwaters
E. E. Stickley		9 Leisurely Lane	Bellport
Don Streit	(Phyllis)	Brown's Lane	Bellport
Stewart Strong		175 West Islip Rd.	Babylon
James A. Swan, Jr.	(Nancy)	Willow Street	Babylon
Robert J. Tarr	(Janet)	Peninsula Drive	Babylon
Richard Thall		Windsor Ave.	Brightwaters
M. Whiting Thayer, Jr.	(Joyce)	319 Brendan Ave.	Massapequa
William E. Thomas		10 Cabot Rd. W.	Massapequa
William P. Thorn	(Barbara)	51 Coles Ave.	Amityville
Edwin Thorne		108 E. Bayberry Pt. Rd.	Islip
Henry G. Tilden	(Ruth)	48 Foster Lane	Babylon
John S. Titterington		1 Kensington Rd.	Babylon
Joseph V. Tooker	(Louise)	7 Green Ave.	Babylon
William H. Torrey	(Joy)	66 Strong Ave.	Babylon
R. P. Trainer		105 Annuskemunica Rd.	Babylon
Charles S. Trattler	(Honey)	7 Locust Cove Lane	Kingspoint
Jack G. Travis	(Ruth)	26 Fairway East	Sayville
Richard W. Trumble		15 Dorset Lane	Babylon
Eugene E. Turner		84 S. Carll Ave.	Babylon
Harry Tzucanow		39 Carrie Ave.	Bethpage
Thomas Underhill	(Kate)	33 Washington St.	Babylon
Hiram A. Vogel	(Bert)	9 Mayhew Ave.	Babylon
Peter B. Voorhies	(Marge)	88 Araca Rd.	Babylon
Charles A. Voso		114 Peninsula Drive	Babylon
A. G. Wambach	(Helen)	203 Melbury Rd.	Babylon
Frank E. Wanser	(Betty)	100 Ocean Ave.	Amityville
Joseph Warnock	(Mildred)	27 North Plaza	Amityville
E. B. Wayland		10 Long Drive Ct.	Bay Shore
John R. Whittaker		1 Sumpwams Ave.	Babylon
Edward C. Wimmerstedt		848 East Bay Drive	Babylon
Robert Wissmann	(Charlotte)	20 Brown Blvd.	Wyandanch
Judson F. Worden	(Phyllis)	14 Robin Lane	Levittown
John B. Wragge	(Alma)	25 Lake End Drive	Merrick
Ferdinand Wyckoff		Box 174	Babylon
Dan W. Wynkoop		71 Stillwater Ave.	Massapequa
John F. Young	(Jenni)	West Islip Rd.	West Islip
Joseph F. Young	(Jean)	35 Village Line Rd.	Babylon
Frederick F. Zimmerman	(Barbara)	10 Sequams Lane North	Babylon

GET THAT G-!?!*D-*
FLASHLIGHT OUT OF
MY COCKPIT!

PUT - PUT - PUT

PLEASE, DEAR, NOT NOW—
WE'RE SUPPOSED TO BE
RACING!

PUT - PUT

I DON'T CARE WHAT THE
CHART SAYS — WE PASSED
THAT BUOY AN HOUR
AGO!

PUT - PUT

AS LONG AS WE'RE
AGROUND, — WHY
DON'T YOU DIG
SOME CLAMS?

YOU MEAN THAT'S THE LAST
CIGARETTE ?!*@!

I SAY
TO HELL WITH IT —
LET'S PUT IN AT
GREAT RIVER!

PUT - PUT

LISTEN — THAT SOUNDS
LIKE A MOTOR!

PUT - PUT

HEY, YOU OVER THERE!
WHICH WAY IS
FIRE ISLAND LIGHT?

ALRIGHT, SO YOU'RE
SLEEPY — WHO ISN'T?

PUT - PUT - PUT

WELL, IF YOU'D
LAY OFF THAT BEER, YOU WOULDN'T
HAVE TO GO SO OFTEN!

PUT - PUT - PUT - PUT

PUT - PUT - PUT

WHO DAT?

ME!

PUT - PUT

☆ THE NIGHT RACE ☆

or

WHERE IN HELL ARE WE?

DARINGLY DEPICTED BY HERVEY GARRETT SMITH — WHO LABORED FAR INTO THE NIGHT *

* WITHOUT FEAR OR FAVOR, AND WITH LITTLE HOPE OF RECOMPENSE.

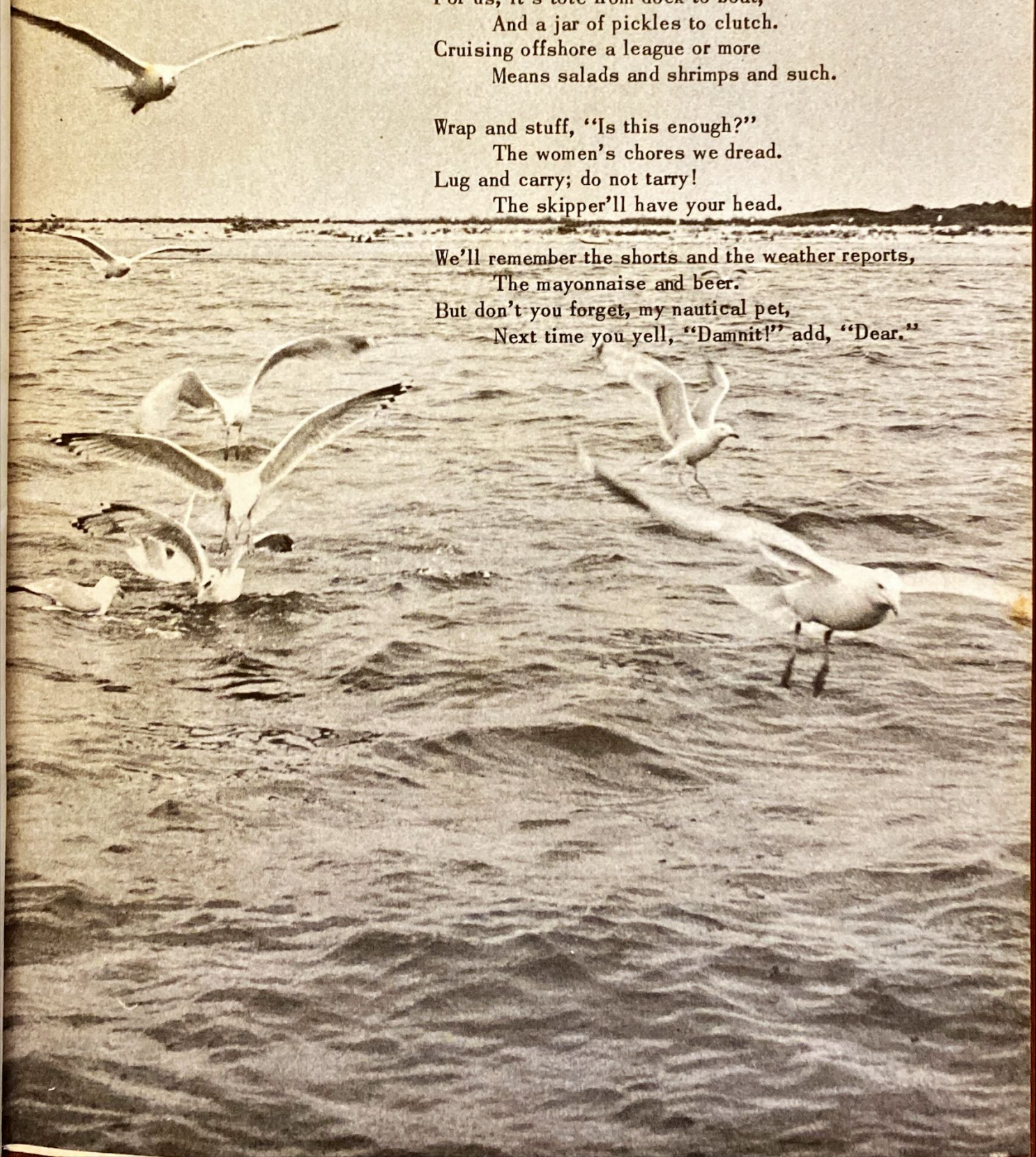
Lines by a Sailor's Wife
or
"Whatd'ya Mean, I Forgot the Can Opener?"

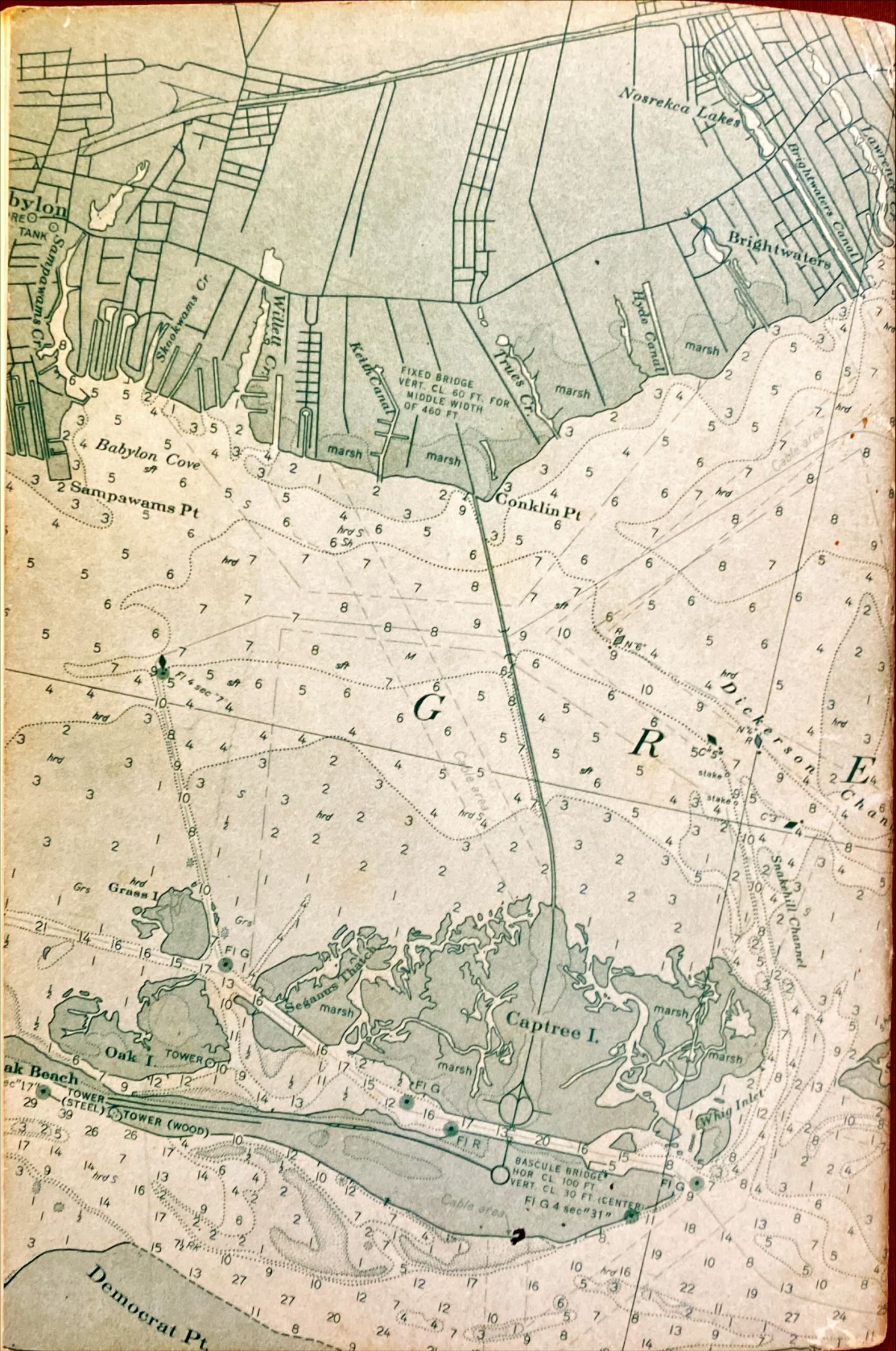
Oh, woe for the life of a sailor's wife,
'Tis not all peaches and cream.
To sail away on a summer day
Is far from an idyllic dream.

For us, it's tote from dock to boat,
And a jar of pickles to clutch.
Cruising offshore a league or more
Means salads and shrimps and such.

Wrap and stuff, "Is this enough?"
The women's chores we dread.
Lug and carry; do not tarry!
The skipper'll have your head.

We'll remember the shorts and the weather reports,
The mayonnaise and beer.
But don't you forget, my nautical pet,
Next time you yell, "Damn it!" add, "Dear."





Nosrekca Lakes

Brightwaters Canal

Babylon REO TANK

Sampawams Cr.

Shookwams Cr.

Willett Cr.

Ketchikan Canal

Trues Cr.

Hyde Canal

FIXED BRIDGE
VERT. CL 60 FT. FOR
MIDDLE WIDTH
OF 460 FT

Babylon Cove

Sampawams Pt

Conklin Pt

G

R

E

Dickerson Chan

Grass I.

Seganus Throat

Captree I.

Oak I.

Oak Beach

TOWER (STEEL)

TOWER (WOOD)

BASCULE BRIDGE
HOR. CL 100 FT.
VERT. CL 30 FT. (CENTER)

Democrat Pt.