

Silver Anniversary

1951



1976

South Bay Cruising Club



"ORCA"
SBCC Flagship

TABLE OF CONTENTS

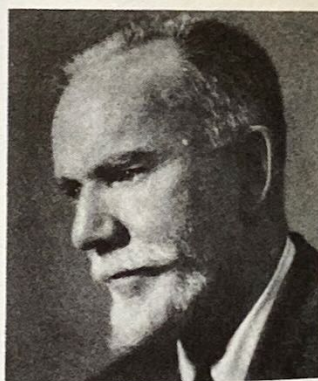
Honorary Life Members	2
Past Commodores	3
Commodore's Message	4
Members, Board of Governors & Committees	5
Social & Cruising Schedule	6
Racing Schedule	7
Notes to Social & Racing Schedules	12
Cruising Information	13
Radio Communication	14
Racing Information	15
A Review	28
Plea for Competence	37
Race Winners	38
Members SBCC 1976	40
SBCC Fleet	48
Member Yachts	56
Members' Zip Codes	61
Log for Green Water Award	62
International Code Flags & Pennants	63
Benediction	64

HONORARY LIFE MEMBERS

Honorary Life Members have been elected to this position by the Membership for their unselfish and outstanding contributions to the Club. They have served in various capacities and each has been instrumental in giving guidance to this South Bay Cruising Club which we enjoy so much. Many pleasures you derive from the Club are directly attributable to one of these men.



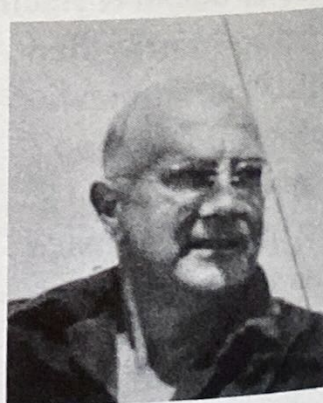
JOHN D. BEINERT
*1st Handicap Chairman
Cruise Chairman, Fleet Captain
Corresponding Secretary, Yearbook
Chairman, Vice Commodore, Commodore*



DR. MARSTON L. HAMLIN
*Board of Governors
Early Cruiser & Singlehander*



HERVEY G. SMITH
*1st Vice Commodore, 1st Regatta Chairman
1st Fleet Captain, Yearbook 1956-1962
Devised the reversible West Island Race
Author, Artist, Marine Historian of
International Reputation*



MERRITT L. SMITH
*1st Cruise Chairman
Vice Commodore, Commodore
Regatta Chairman 1956-1965*

PAST COMMODORES



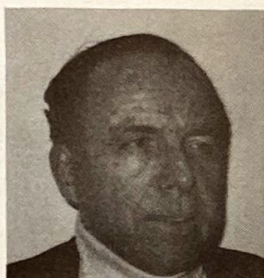
WILLIAM CARL
1951



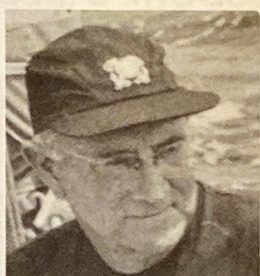
JAMES A. SWAN, JR.
1952-1953



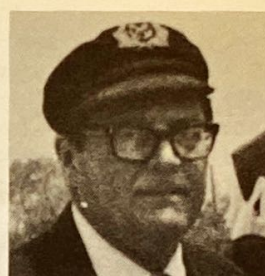
JOHN F. YOUNG
1954-1955



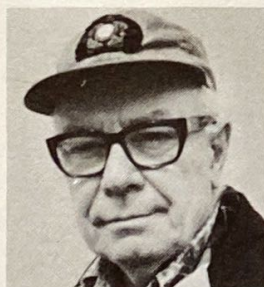
HENRY A.V. POST
1956-1957



MERRITT L. SMITH
1958-1959



ROBERT L. PATERSON
1960-1961



JOHN D. BEINERT
1962-1963



EVERETT SEIDENBERG
1964-1965



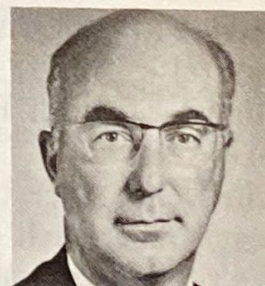
ROGER G. RAMSDELL
1966-1967



ALEX PEARSON
1968-1969



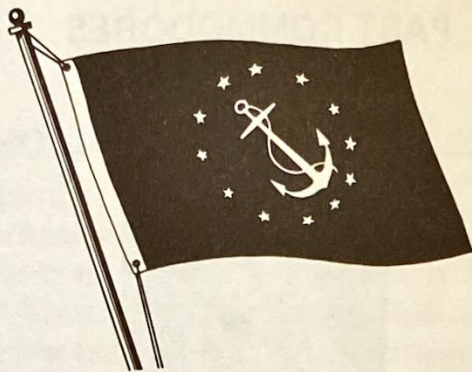
FRED C. EGGERSTEDT, JR.
1970-1971



WILLIAM F. BRADT
1972-1973



M. WHITING THAYER
1974-1975



COMMODORE'S MESSAGE

From The Masthead

In twenty-five years, the club has grown. We can cite statistics and revel in numbers, but the same glue that held the club together in 1951 holds us still. That peculiar chemistry of boat, family, friends and bay water, gives us all enjoyment aplenty.

On commissioning day in 1960, we showed up with our new dream come true — *Polymer*, a Dickerson Ketch. We were new then and weren't sure of ourselves or of the reception we'd get at this new club. A very salty character, the skipper of a handsome schooner, came aboard and gave us valuable advice about ventilation and dry rot (remember that?). Another guy in a peaked cap got out of his catboat, introduced himself and practically everyone else on the dock. We've all come a long way since then, but the friendliness of John Beinert and Henry Post is still with us, along with a host of others.

The years since then have been kind. Each annual cruise, each rendezvous, each race, each club party has reintroduced old friends and made new.

We're surer of ourselves now, the mate and crew are veterans of many adventures, and it's now our turn — and I hope you'll join us — to welcome the new folks, to pass along a hint to make cruising more enjoyable.

Alex Pearson said one day "Remember those old fogeys on the Yacht Club Dock, who were always making us behave? They're us"!

See you on the bay,

Bus



SOUTH BAY CRUISING CLUB

An organization formed in 1951 to promote cruising under sail on Great South Bay and nearby waters.

OFFICERS

Commodore, Bud Rosenberg *Vice Commodore*, Richard C. Nehring
Rear Commodore, William J. Dwyer *Treasurer*, William Bracco *Fleet Captain*, Boris M. Spivack
Recording Secretary, William M. Menger *Corresponding Secretary*, Kenneth A. Kondor
Chantyman, Edward J. Scheker *Fleet Surgeon*, Dr. Arnold W. Golfman

BOARD OF GOVERNORS

Robert S. Forman, Edward S. Johnson, Ralph W. Logan
Eugene M. Reardon, M. Whiting Thayer, John D. Woodward, Donald J. Zimmer

COMMITTEES

- Cruising* Boris M. Spivack, Chairman — 589-3629
John P. Berdolt, Anton Davies, William Dunleavy, Robert Dunlop, Edward S. Johnson,
Walter Kachel, Dave King, Kenneth A. Kondor, Ronald B. Peterson, Roger G. Ramsdell,
Richard R. Reimer, Jack R. Ryan, Richard Stephens, Alfred Wieda, Donald J. Zimmer.
- Education* John Berdolt, Chairman — 669-6617
- Entertainment* Carole & Bob Sheppard, Chairmen — 472-0099
Joan & Robert Belfield, Dotty & Ronald Benedict, Ruth & Harry Breul, Pearle & John
Canning, Betty & Frank Carr, Jeanette & Lowell Deutsch, Carol & Herbert Glover, Joan
& Jay Gould, Alice & Dieter Jetzorreck, Judith & Harry Kenny, Melissa & Bruce
Kennedy, Joan & Jack Perry, Claire & Richard Reed, Eleanor & Soren Smith, Caroline
& John Wragge, Annette & Francis Zangle.
- GSBYRA Representative* Eugene M. Reardon, Chairman — 665-1277
- Handicap* Edward E. Miller, Chairman — 661-4862
Robert Forman, Harold Johansen, Ralph Logan
- Historian* Everett Seidenberg, Chairman — 669-4930
- Liaison* John F. Young, Chairman — 669-1181
- Measurement* J. Stephen Sprole, Chairman — 598-1420
- Membership* Robert C. Thomson, Chairman — 264-0753
- Planning* Richard C. Nehring, Chairman — 795-4154
William J. Dwyer, Richard A. Lampe, Eugene M. Reardon,
John R. Saxe, John D. Woodward
- Program* M. Whiting Thayer, Chairman — 669-6751
- Protest* Robert Schafer, Chairman — 669-6751
- Racing* Edward M. Buyer, Chairman — 567-0382
William Dwyer, Jack Layton, Edward Miller, Eugene Reardon
Class Captains:
Class S, Gorty Baldwin, 669-9247 — Class M, Lou Casey, 587-8388
Class I, Bob Schafer, 669-6751 — Class II, John Legget, 669-8832
Eastern Station: Jim Reilly, 598-2358 — Richard J. LaBella, 277-4725
- Storekeeper* Robert O. Smith, Chairman — 798-3395
- Trophy* Patricia Kelly, Chairman — 277-4683
Louis J. Casey, William J. Dwyer, Earl W. Murray, Jr.
- Welcoming* William P. Dunleavy, Chairman — 567-0594
- Yearbook* Earl W. Murray, Jr., Chairman — 277-3928
Toni Cohill, Stephen W. Delise, Arlene McClain, Trudy Murray

SBCC IS A MEMBER OF THE GREAT SOUTH BAY YACHT RACING ASSOCIATION AND
UNITED STATES YACHT RACING UNION

SOUTH BAY CRUISING CLUB 1976 SOCIAL AND CRUISING SCHEDULE

<u>Date</u>	<u>Day</u>	<u>Activity</u>	<u>Notes</u>	<u>Committee Boat</u>
May 1	Sat.			
May 2	Sun.			
May 8	Sat.			
May 9	Sun.	Mother's Day		
May 15	Sat.	Spring Cocktail Party	Bay Shore Yacht Club	
May 16	Sun.			
May 22	Sat.	Rendezvous	Cedar Beach (1)	Skylark
May 23	Sun.			
May 29	Sat.	Rendezvous	Great River	Wild Thyme
May 30	Sun.	Rendezvous	Hemlock Heading (1)	Puritan
May 31	Mon.	Memorial Day Commissioning Day/Salty Sam Auction	Babylon Y.C.	
Jun. 5	Sat.	Rendezvous	Robert Moses Basin (1)	Kismet
Jun. 6	Sun.			
Jun. 12	Sat.	Family Race to Watch Hill	Watch Hill	Sea Dream
Jun. 13	Sun.	Family Race from Watch Hill	Watch Hill	
Jun. 19	Sat.	Rendezvous	Hemlock Heading (1)	Resistance
Jun. 20	Sun.	Father's Day		
Jun. 26	Sat.	Rendezvous	Great River	Scotch & Water
Jun. 27	Sun.			
Jul. 3	Sat.	Annual Cruise		
Jul. 4	Sun.	Annual Cruise		

SOUTH BAY CRUISING CLUB 1976 RACING SCHEDULE

<u>Date</u>	<u>Day</u>	<u>Event</u>	<u>Warn- ing Gun</u>	<u>Start- ing Seq.</u>	<u>Notes</u>	<u>Race Chairman</u>	<u>Starting Location</u>	<u>Race Course</u>
May 1	Sat.							
May 2	Sun.							
May 8	Sat.							
May 9	Sun.							
May 15	Sat.	Tune-up #1 and #2	1000 1400	Comb. Comb.		John Berdolt John Berdolt	Babylon Babylon	E E
May 16	Sun.	Early Bird #1	1200	Comb.		John Rieger	Bay Shore	D-F
May 22	Sat.	Early Bird #2	1200	Comb.		Dick Lampe	Bay Shore	D,E
May 23	Sun.	Early Bird #3	1200	Comb.		Bill Ciocys	Bay Shore	D,E
May 29	Sat.							
May 30	Sun.	LIYC Invit.	1200	Reg.		LIYC	Babylon	F
May 31	Mon.	Creepstakes	1100	Reg.	1	Jim Glynn	Babylon	D,E
Jun. 1	Tues.	Eastern Twilight Spring I	1930	East	2,6	Fred Horn	Sayville	A-E
Jun. 3	Thurs.	Western Twilight Spring I	1930	Comb.	2,6	Lou Orr	Bay Shore	A-C
Jun. 5	Sat.	Ocean Race	1000	Comb.		Ed Schecker	Ocean	A,B
Jun. 6	Sun.							
Jun. 8	Tues.	Eastern Twilight Spring II	1930	East	2,6	Jim Reilly	Sayville	A-E
Jun. 10	Thur.	Western Twilight Spring II	1930	Comb.	2,6	Bob Dunlop	Bay Shore	A-C
Jun. 12	Sat.	Family Race to Watch Hill	East 1100 West 1100	Comb. Comb.	2 2	Bob Ernst (S&F) Bob Schafer (S)	Sayville Bayshore	Family Family
Jun. 13	Sun.	Family Race from Watch Hill	East 1400 West 1400	Comb. Comb.	2 2	Mickey Walsh (S&F) Roger Ramsdell (F)	Watch Hill Watch Hill	Family Family
Jun. 15	Tues.	Eastern Twilight Spring III	1930	East	2,6	Jack Layton	Sayville	A-E
Jun. 17	Thur.	Western Twilight Spring III	1930	Comb.	2,6	Harold Johansen	Bay Shore	A-C
Jun. 19	Sat.	Bay Shore YC Invitational	1300	Reg.		Bay Shore YC	Bay Shore	D
Jun. 20	Sun.	Narrasketuck YC Invitational	1000	Reg.	6	Gorty Baldwin	Bay Shore	H,I
Jun. 22	Tues.	Eastern Twilight Spring IV	1930	East	2,6	Kelly Westhoff	Sayville	A-E
Jun. 26	Sat.	COMMODORE'S CUP	1300	Reg.	10	Bob Novak	Nicoll Bay	A
Jun. 27	Sun.							
Jun. 29	Tues.	Eastern Twilight Summer I	1930	East	2,6	Dick LaBella	Sayville	A-E
Jul. 3	Sat.	Babylon YC Invitational	1300	Reg.		Babylon YC	Babylon	A-D
Jul. 4	Sun.							

SOUTH BAY CRUISING CLUB 1976 SOCIAL AND CRUISING SCHEDULE

<u>Date</u>	<u>Day</u>	<u>Activity</u>	<u>Notes</u>	<u>Committee Boat</u>
Aug. 28	Sat.	Rendezvous	Great River	Utopia
Aug. 29	Sun.			
Sept. 4	Sat.	Rendezvous	Great River	Orca
Sept. 5	Sun.	Rendezvous	Robert Moses Basin (1)	Easy Jigs
Sept. 6	Mon.	Labor Day		
Sept. 11	Sat.	Rendezvous	Cedar Beach (1)	Sea Sprite
Sept. 12	Sun.			
Sept. 18	Sat.	Family Race to Watch Hill Clam Bake and Beach Party	Watch Hill	Nimark
Sept. 19	Sun.	Family Race from Watch Hill		
Sept. 25	Sat.	Rendezvous	Unqua Heading (1)	Utopia
Sept. 26	Sun.			
Oct. 2	Sat.	Rendezvous	Atlantique	Resistance
Oct. 3	Sun.			
Oct. 9	Sat.	Rendezvous Cook-Out — Hot Dogs-Hamburgers	Barrett Beach	Puritan
Oct. 10	Sun.	Rendezvous	Barrett Beach	Free Spirit
Oct. 11	Mon.	Columbus Day		
Oct. 16	Sat.			
Oct. 17	Sun.			
Oct. 23	Sat.	Rendezvous	Hemlock Heading (1)	Kismet
Oct. 24	Sun.			
Oct. 25	Mon.			
Oct. 30	Sat.	Rendezvous	Great River	Sea Dream
Oct. 31	Sun.			
Nov. 13	Sat.	Fall Cocktail Party	2	
Dec. 11	Sat.	Christmas Party	2	
Feb. 5	Sat.	Winter Dance	2	

See NOTES TO SOCIAL AND CRUISING SCHEDULE on Page 12

SOUTH BAY CRUISING CLUB 1976 RACING SCHEDULE

<u>Date</u>	<u>Day</u>	<u>Event</u>	<u>Warn- ing Gun</u>	<u>Start- ing Seq.</u>	<u>Notes</u>	<u>Race Chairman</u>	<u>Starting Location</u>	<u>Race Course</u>
Aug. 24	Tues.	Eastern Twilight Fall I	1900	East	2,6	Dick Stephens	Sayville	A-E
Aug. 26	Thurs.	Western Twilight Fall II	1900	Comb.	2,6	Jack Saxe	Bay Shore	A-C
Aug. 28	Sat.	SMITH TROPHY	1300	Reg.	10	Fred Wiedersum	Bay Shore	G
Aug. 29	Sun.	LADIES' RACE	1400	Comb.	3,10	Gene Reardon	Bay Shore	B,C
Aug. 31	Tues.	Eastern Twilight Fall II	1900	East	2,6	Dave King	Sayville	A-E
Sept. 2	Thurs.	Western Twilight Fall III	1900	Comb.	2,6	Marty Kind	Bay Shore	A-C
Sept. 4	Sat.	} To Be Announced						
Sept. 5	Sun.							
Sept. 6	Mon.							
Sept. 11	Sat.	Babylon YC Fall Series I	1300	Reg.	11	Babylon YC	Babylon	A-D
Sept. 12	Sun.	Babylon YC Fall Series II	1300	Reg.	11	Babylon YC	Babylon	A-D
Sept. 14	Tues.	Eastern Twilight Fall III	1830	East	2,6	Ed Neale	Sayville	A-E
Sept. 18	Sat.	Family Race to Watch Hill	East 1100	Comb.	2	Ed Kaiser (S&F)	Sayville	Family
			West 1100	Comb.	2	Don Zimmer (S)	Bay Shore	Family
Sept. 19	Sun.	Family Race from Watch Hill	East 1400	Comb.	2	Don Brown (S&F)	Watch Hill	Family
			West 1400	Comb.	2	Al Wieda (F)	Watch Hill	Family
Sept. 21	Tues.	Eastern Twilight Fall IV	1830	East	2,6	Ron Peterson	Sayville	A-E
Sept. 25	Sat.	Babylon YC Fall Series III	1300	Reg.	11	Babylon YC	Babylon	A-D
Sept. 26	Sun.	Class Race	1300	Special	4	Ralph Logan	Bay Shore	D-F
Oct. 2	Sat.	Wind Up I	1000	Reg.		Tom Bolger	Bayberry	D-F
		Wind Up II	1400	Reg.		Bill Dwyer	Bayberry	D-F
Oct. 3	Sun.							
Oct. 9	Sat.	Discoverers Race	1200	Reg.		Bill Holmes	Bay Shore	D
Oct. 10	Sun.							
Oct. 11	Mon.							
Oct. 16	Sat.	Wind Up III	1200	Reg.		Herb Glover	Bayberry	A-C
Oct. 17	Sun.							
Oct. 23	Sat.							
Oct. 24	Sun.							
Oct. 25	Mon.							
Oct. 30	Sat.	Last Chance	1000	Comb.		Ed Petroske	Bay Shore	G
Oct. 31	Sun.							

See NOTES TO RACING SCHEDULE on Page 12

SOUTH BAY CRUISING CLUB NOTES TO 1976 SOCIAL & CRUISING AND RACING SCHEDULES

NOTES TO SOCIAL AND CRUISING SCHEDULE

1. Refer to Cruising Guide for directions to Rendezvous location.
2. Details will be provided at a later date.

NOTES TO RACING SCHEDULE

1. SINGLE HANDED CREEPSTAKES – Only Skipper is allowed on boat during race.
2. WESTERN TWILIGHT RACES; EASTERN TWILIGHT – NON-SPINNAKER CLASS and FAMILY RACES: No spinnakers, bloopers, or staysails allowed. Yachts may fly only one headsail at a time whose luff must be attached full length to the headstay.
3. LADIES' RACE – Skipper must be a lady. Broadside Trophy for best in fleet with all-girl crew. Yachts eligible for this trophy must so advise Race Committee prior to their warning signal.
4. CLASS RACE – A one design race for any class with three or more entries. Corvettes start on third signal (Red); Tartans on fourth signal (White); Morgan 34's on fifth signal (Blue). Any other classes wishing to race will start on sixth signal (Red).
5. WEST ISLAND RACE has its own starting sequence. Check starting sequence instructions for details.
6. Time Limit 2200.
7. Time Limit 1900.
8. No Time Limit.
9. TEAM RACE – Six Boats from each Club. SBCC Boats to be selected by Regatta Committee. Winning Club Team with best combined corrected time.
10. Races shown in ALL CAPS are subject to Perpetual Trophies. Consult Race Information under PRIZES for specifics.
11. Finish at Babylon Yacht Club Dock.



CRUISING INFORMATION

This is the year that our nation is two hundred years old, and the S.B.C.C. is twenty-five years old.

In conjunction with these two historic events, we are planning an unusual season of cruising events and social activities that are guaranteed to keep your interest and enthusiasm from start to finish.

Of utmost importance is our Annual Cruise. Many of us will be heading west, some will be going in an easterly direction, but no matter which way you go, we do hope you will find the weather fair and the breeze to your liking.

As in the past, the giant green and white S.B.C.C. Burgee will be flying from the main truck of the Committee boat. That's the signal to raft up or come over by dink and have a pleasant visit. The Committee boat is there to serve as a focal point for all members, especially newer members, to meet and become better acquainted.

To locate the rendezvous, and to be where the action is, consult the schedule for dates and locations, and see the Cruising Guide on how to get there and what to do. Your Cruise Committee and Entertainment Committee have spent many hours trying to make certain that each event will be one of great pleasure and memory.

Our Annual Cruise is designed and scheduled to coincide with Operation Sail - that will put the tall ships on parade on July 4, 1976 in New York Harbor. I'm sure we'll have plenty of company for this event. Preceding the day of the parade, we plan to rendezvous in the area of Jamaica Bay, going from there on Sunday, July 4th, to the parade route, and then Monday into Long Island Sound. In the Sound, we have several new ports of call to visit, and many new activities planned.

Our cruise events this year will revolve around the theme of "The Family Race". Inherent in this thought is the idea of having the family "pitch in" and become the crew in a racing situation. This would limit the use of "ringers" in these family races.

In cooperation with the Entertainment Committee, we are planning several beach parties as part of the scheduled rendezvous. These should prove to be lots of fun.

There are some slight changes in our schedule of events for this coming year. Please be sure to recognize that the Annual Cruise will be held from July 3rd through the 17th, and that we will circumnavigate Long Island.

Great River Week, which is scheduled from August 9 to the 14th, will, as usual, be loaded with activities for all types of sailors. At this point, there is even talk of a model sail boat race. All we need is a few more interested participants.

We urge you not to miss the Cruise Information meetings held in the winter and spring. These meetings are designed to give both "old" and "new" salts valuable information about cruising. So here goes. "Good Sailing".



RADIO COMMUNICATION

Communication by radio has been very helpful while sailing and especially so on cruises. While it is not necessary to have this capability in order to cruise, it can be helpful in an emergency.

Vessels licensed before January 1, 1972 may continue to use low-frequency equipment until January 1, 1977, provided ownership has not changed. If a vessel is sold, the radio license must remain with the original license holder. New station licenses are issued by the Federal Communications Commission for the use of VHF (Very High Frequency) equipment.

Skippers desiring to install VHF equipment should obtain a set having at least eight channel capacity. Of the many channels allocated for marine use the suggested channels for SBCC vessels are listed below. The weather channels receive only, therefore some companies refer to these as half channels.

Channel Designation	Function	Traffic
6	Ship/Ship only	Safety - Mandatory
16	Ship/Ship, Ship/Shore	Distress Calling - Mandatory
9	Ship/Ship only	Clubs, Marinas, Yards
26	Ship/Public Coast	Telephone - N.Y. Marine Opr.
28	Ship/Public Coast	Telephone - Riverhead Marine Opr.
68	Ship/Ship, Ship/Shore	Yachts
70	Ship/Ship	Yachts
22	Ship/Ship, Ship/Shore	Coast Guard Working Frequency
WE1	Shore/Ship, Rec. only	Weather - New York

If the radio set has greater channel capacity, the following additional channels are desirable:

13	Ship/Ship, Ship/Shore	Locks, Canals, Pilots & Bridge/Bridge
72	Ship/Ship	Yachts
WE2	Shore/Ship, Rec. only	Weather - New London

No prearranged plan for the SBCC use of stand-by frequencies can be made. This is because boats usually have either low frequency or VHF equipment. Vessels making up a fleet may get together and work on radio communication arrangements, prior to departure, for the equipment available.

Each day during the annual cruise, the following 10-minute periods are designated for communications between SBCC Vessels. Vessels should monitor on 2182 MHZ or on channel 16 (VHF), whichever is available.

0710 to 0720 Hours
1310 to 1320 Hours
1810 to 1820 Hours
1910 to 1920 Hours

For those desiring information about Marine Telephone operation, a handbook entitled "Marine Radio Telephony" is available from the Radio Technical Commission for Marine Services, c/o Federal Communications Commission, Washington, D.C. 20554.

RACING INFORMATION

ELIGIBILITY

All proper cruising sailboats owned or chartered by SBCC members are eligible to participate in Club races provided they have paid the racing fee and handicap information is available for them. SBCC family races and other Yacht Club invitationals do not require payment of the racing fee.

HANDICAPS

The SBCC Fleet includes many widely differing types of cruising sailboats. In order to make participation in Club races attractive to as many members as possible, the Club offers both Performance Handicap and Measurement Rule racing. Under this dual system, every yacht in the fleet, upon request to the handicap chairman, is given a Performance Rating based upon its maximum speed potential. In addition, members may elect to obtain measurement certificates for their yachts, qualifying them to race under the MORC or Storm Trysail rules. Members may change classes (i.e. Measurement to Performance or vice versa) only once during the year.

Performance Handicap Classes

The SBCC Performance Handicap System rates each yacht according to its maximum speed potential. In addition, a "variable handicap" method is employed which accounts for variations in yacht speed potential under different race conditions. This system encourages each racing skipper to get the best performance from his yacht, and eliminates inequities resulting from use of a single-value handicap, which cannot account for actual sailing characteristics over the range of the fleet speeds normally encountered.

Maximum speed potential is established for each yacht through (1) analysis of race data for consistently well-sailed yachts of similar design. (2) comparison with reference handicaps derived from Pacific Handicap Racing Fleet data and (3) speed trending data from past performances.

Following each race the average fleet speed is determined, and the actual performance of each yacht is compared to its maximum speed potential for that fleet speed. A correction factor, derived directly from this comparison, is applied to the yacht's actual elapsed time to yield the corrected time for the race.

Under the performance handicap system, all yachts of different design will have distinctive maximum speed characteristics from which individual handicaps are derived for each race. Handicaps for yachts of the same design will vary by no more than 12 seconds per mile to account for differences in rig and sail complement.

Each racing skipper is obliged to contact the Handicap Chairman in advance of his first race under the following conditions:

- (a) A particular yacht is to be raced in the SBCC fleet for the first time.
- (b) The skipper has raced another yacht bearing the same sail number during the season.
- (c) A larger headsail or spinnaker is acquired.

RACING INFORMATION (Cont'd.)

Yachts that serve as committee boat for one race of any series except the Eastern Twilight Series will receive credit toward series qualification for that race and points equal to the average of their finish positions in the other races of the series, DNS and DNF races included. Yachts serving as committee boat for an Eastern Twilight Series race will receive for that race either three points or one more than the number of starters, whichever is less.

TUNE-UP SERIES

This is a two-race series, with no throw-out race (except committee boat as noted above).

Early Bird Series, Summer Series and Western Spring, Summer and Fall Twilight Series

These are three-race series. They will be scored on the basis of a yacht's best two races. To qualify, a yacht must race two races (except committee boat as noted above).

Great River Week

This is a six race series. It will be scored on the basis of a yacht's best five races. In addition, the last three races will be scored as a separate series, with no throw-out race (except committee boat as noted above).

Eastern Twilight Spring, Summer, Midsummer, and Fall Series

These are four-race series. They will be scored on the basis of a yacht's best three races (except committee boat as noted above).

Wind-Up Series

This is a three-race series composed of two short races and one long race. The long race will be counted twice in the scoring. Scoring will be on the basis of a yacht's three lowest scores. To qualify, a yacht must race two races (except committee boat as noted above).

RULES

Racing rules of the USYRU shall be observed except as otherwise specified in these instructions. Burgees and other flags may be flown when racing. Government navigation buoys not stated to be marks of the course may be disregarded at the discretion of the skipper. The International Rules of the road will be used instead of the Racing Rules between the hours of sunset and sunrise. All required lights must be shown.

EQUIPMENT

The equipment required by USYRU for Category 4 races is strongly recommended.

PROTESTS

The SBCC Protest Committee operates under Part VI of the Racing Rules of the USYRU, supplemented by published decisions of the USYRU Appeals Committee.

RACING INFORMATION (Cont'd.)

It will only entertain protests made in conformity to the rules of Part VI, including:

- Display of protest flag
- Notification of protested yacht
- Notification of Race Committee
- Submission of written protest
- Citation of rule or rules allegedly infringed

Protests must be addressed to the Chairman of the Protest Committee and hand-delivered or postmarked within 24 hours of the conclusion of the race in question.

STARTING SEQUENCE

(With the exception of the West Island Race)

Signals will be made at five-minute intervals with each signal lowered 30 seconds before the hoisting of the next. The visual signal governs; the gun merely calls attention to it. As noted in the Race Schedule, classes will start as follows:

Time	Shape	Regular Start Sequence	Combined Start Sequence	Single-Class Sequence
:00	White	Warning	Warning	Warning
:05	Blue	Preparatory	Preparatory	Preparatory
:10	Red	Start S	Start S & I	Start
:15	White	Start I	Start M & II	
:20	Blue	Start M		
:25	Red	Start II		

For the West Island Race only: 13:00 - Warning (White); 13:05 - Preparatory (Blue); 13:10 - Start II (Red); 13:15 - Preparatory (White); 13:20 - Start M (Blue); 13:25 - Preparatory (Red); 13:30 - Start I (White); 13:35 - Preparatory (Blue); 13:40 - Start S (Red).

The Eastern Twilight Series will use the Combined Start Sequence. The Spinnaker Class starts on the Red Shape and the Non-Spinnaker Class starts on the White Shape.

When, after a Starting signal, all the yachts of the class or classes involved have properly started, the Race Committee will verbally announce "All Clear".

RECALLS

The Race Committee will endeavor to notify any yacht starting early by means of a Recall signal. The signal will be one blast of a horn or whistle for each yacht over early. The committee will also hail the yachts being recalled individually. Nearby yachts are requested to pass the hail. Any yacht failing to hear or heed such a recall will be penalized by having one-half hour added to her elapsed time.

General Recall: If there should be a number of unidentified premature starters, or if an error is made in the starting procedure such as a significant inaccuracy in the interval between signals, the Race Committee will make the General Recall signal. The starting sequence will resume with the Warning signal for the class that was recalled.

RACING INFORMATION (Cont'd.)

STARTING LINE ETIQUETTE

Racing skippers are reminded to stay clear of the starting line until the Preparatory signal for their class. Failure to do so may result in disqualification.

The Preparatory Signal for each class is the Starting Signal for the preceding class (except in the West Island Race). Yachts starting with the wrong class may be disqualified.

TIME LIMIT

Regardless of time of start, the time limit for each class will expire at 1800 for all races except as noted otherwise in the schedule. If any yacht finishes within the time limit, it is a race for her class. Yachts finishing after the committee boat has left its station should take their own time and report it to the Race Committee as soon as possible.

SPECIAL SIGNALS

Code flags A through J are used to designate courses; see Course Instructions.

Code flags below apply to all SBCC-conducted races:

- L** — One of the designated MARKS is missing; come within hail for instructions.
 - M** — ROUND or pass the object displaying this signal instead of the mark it replaces.
 - N** — ABANDONMENT, race called off (accompanied by three guns).
 - R** — Sail the designated course in the REVERSE direction. Leave all marks to opposite hand.
 - S** — Sail the SHORT course prescribed in the course instructions. When flown after the start (accompanied by two guns) means finish between the committee boat and the nearby mark of the course.
 - T** — Sail the designated course TWICE around.
- Answering Pennant** — POSTPONEMENT signal (accompanied by two guns). Starts postponed fifteen minutes. Warning signal will be made 30 seconds after Answering Pennant is lowered.
- 1st Repeater** — GENERAL RECALL signal (accompanied by two guns). Starting sequence resumes with the Warning signal for the class being recalled.

COURSE INSTRUCTIONS

Where possible, SBCC courses in the Bay have been grouped by starting area. These areas are:

- Babylon
- Bay Shore
- Bayberry
- Nicoll Bay
- Sayville

For each of these areas, a variety of courses are described below, each bearing a distinguishing letter. The choice of courses available to the Race Committee on any given day is shown in the Race Schedule. The course selected will be signaled from the Committee Boat by the appropriate letter code flag. (Letters A through J

RACING INFORMATION (Cont'd.)

may be used):

Courses not included in the above geographical areas are listed under "special courses."

Any course can be reversed by code flag "R" or shortened by code flag "S" as described under "SPECIAL SIGNALS" above.

BABYLON COURSES

Course A: Start established by committee boat off Willetts Creek; to Flasher No. 7 off Oak Island Channel, leaving it to port; through the center span of Robert Moses Causeway to Flashing Green No. 11, leaving it to starboard; to Flashing Green No. 1 off Bayberry Point, leaving it to starboard; to Flashing Green No. 5 off Nicoll Point, leaving it to port; to Black and White Mo (A) in Great Cove, leaving it to port; return through center span of the Causeway to finish line off Willetts Creek. Course distance: 16 nm. Short Course * distance 14.5 nm.

Course B: Start established by committee boat off Willetts Creek; to Flasher No. 7 off Oak Island Channel, leaving it to port; through the center span of Robert Moses Causeway to Flashing Green No. 11, leaving it to starboard; to Flashing Green No. 1 off Bayberry Point, leaving it to starboard; to Can No. 3 off Hecksher State Park, leaving it to port; to Black and White Mo (A) in Great Cove, leaving it to port; return through center span of the Causeway to finish line off Willetts Creek. Course distance: 13.5 nm. Short Course * distance 12.0 nm.

Course C: Start established by committee boat in vicinity of Willetts Creek; to Flasher No. 7 off Oak Island Channel, leaving it to port; through the center span of the Robert Moses Causeway to Flashing Green No. 11, leaving it to starboard; to Flashing Green No. 1 off Bayberry Point, leaving it to port; to Black and White Mo (A) in Great Cove, leaving it to port; return through center span of the Causeway to finish line near Willetts Creek. Course distance: 10.0 nm. Short course* distance: 8.5 nm.

Course D: Start established by committee boat off Willetts Creek; to Flasher No. 7 off Oak Island Channel, leaving it to port; through the center span of the Robert Moses Causeway to Nun No. 6, leaving it to port. Return through center span of the Causeway to finish line off Willetts Creek. Course distance: 4.6 nm. Short Course * distance 3.1 nm.

Course E: Start established by committee boat off Willetts Creek; to Flasher No. 7 off Oak Island Channel leaving it to port; through the center span of Robert Moses Causeway to Nun No. 6, leaving it to port; Return through center span of the Causeway to the starting line stake boat, leaving it to port; to Flasher No. 7 leaving it to port; to finish line off Willetts Creek. Course Distance: 5.8 nm. Short Course * distance: 4.3 nm.

Course F: Start established by committee boat in vicinity of Willetts Creek to Flasher No. 7 off Oak Island Channel, leaving it to port; through center span of the

RACING INFORMATION (Cont'd.)

Robert Moses Causeway to Flashing Green No. 11, leaving it to starboard; to Flashing Red No. 2 off Bayberry Point, leaving it to port; to Flashing Green No. 1 off Bayberry Point; leaving it to port; to Black and White Mo (A) in Great Cove, leaving it to port; return through center span of the Robert Moses Causeway to the finish line off Willetts Creek. Course distance: 11 nm. Short course * distance 9.5 nm.

**For Babylon races, if short course is signaled, omit Flasher No. 7 on first leg and proceed directly to center span of Causeway.*

BAY SHORE COURSES

Course A: Start established by committee boat off Brightwaters Canal; to Flashing Green No. 11 east of Robert Moses Causeway; to Black and White Mo(A) in Great Cove; to finish line off Brightwaters Canal. Leave all marks to port. Course distance: 2.25 nm

Course B: Start established by committee boat off Brightwaters Canal; to Flashing Green No. 11 east of Robert Moses Causeway; to Flashing Red No. 2 off Champlin Creek; to finish line off Brightwaters Canal. Leave all marks to port. Course distance: 4.7 nm

Course C: Start established by committee boat off Brightwaters Canal; to Nun No. 6 east of Robert Moses Causeway; to Flashing Green No. 1 off Bayberry Point; to Black and White Mo (A) in Great Cove; to finish line off Brightwaters Canal. Leave all marks to port. Course distance: 5.5 nm

Course D: Start established by the committee boat off Brightwaters Canal; to Nun No. 6 east of Robert Moses Causeway, leaving it to port; leave Flashing Green No. 11 to starboard; to Flashing Green No. 1 off Bayberry Point, leaving it to starboard; to flashing Red No. 4 off Nicoll Point, leaving it to port; return to finish line off Brightwaters Canal. Course distance: 12.0 nm

Course E: Start established by committee boat off Brightwaters Canal; through the center span of Robert Moses Causeway; to Flasher No. 7 off Oak Island Channel, leaving it to port; return through the center span; leave Flashing Green No. 11 to starboard; to Flashing Green No. 1 off Bayberry Point, leaving it to port; to finish line off Brightwaters Canal. Course distance: 9.0 nm

Course F: Course established by committee boat off Brightwaters Canal; to Nun No. 6 east of Robert Moses Causeway, leaving it to port; to Black and White Mo (A) in Great Cove, leaving it to starboard; to Flashing Red No. 2 off Champlin Creek, leaving it to starboard; to starting line stake boat, leaving it to port; to Nun No. 6 east of Robert Moses Causeway, leaving it to port; to Can No. 5 at Dickerson Channel entrance, leaving it to port; to finish line off Brightwaters Canal. Course distance: 11.3 nm. If short course is signalled, leg from Flashing Red No. 2 to stake boat is last leg. Course distance: 7.3 nm

RACING INFORMATION (Cont'd.)

Course G: Start established by committee boat off Brightwaters Canal; to Nun No. 6 east of Robert Moses Causeway, leaving it to starboard; through center span of Causeway to Flasher No. 7 off Oak Island Channel, leaving it to port; through center span to Flashing Green No. 11, leaving it to starboard; to Flashing Green No. 1 off Bayberry Point, leaving it to starboard; to Flashing Green No. 5 off Nicoll Point, leaving it to starboard; to Flashing Green No. 15 off Point o'Woods, leaving it to starboard; to Flashing Red No. 4 off Nicoll Point, leaving it to port; to Flashing Red No. 2 off Champlin Creek, leaving it to starboard; to finish line off Brightwaters Canal. Course distance: 20.2 nm

Course H: Start established by committee boat off Brightwaters Canal; to Flasher No. 31 off Blue Point, leaving it to starboard; to Flashing Red No. 18 off Point o'Woods, leaving it to port; to Flashing Green No. 15 off Point o'Woods, leaving it to starboard; to Flashing Red No. 8 SE of West Fire Island, leaving it to port; to RB Quick Flasher off Saltaire, leaving it to starboard; to BW Mo(A) in Great Cove, leaving it to port; through center span of Robert Moses Causeway; to Flasher No. 7 off Oak Island Channel, leaving it to port. Return through center span of Robert Moses Causeway to finish line off Brightwaters Canal. Course distance: 30.0 nm

Course I: Same as Course H, except round Flashing Green No. 5 off Nicoll Point, leaving it to starboard, and omit Flasher No. 31 and Flashing Red No. 18. Course distance: 20.7 nm

BAYBERRY COURSES

Special Note for Bayberry Course A, B and C: After rounding the first mark in Course A, B or C, a yacht may sail the remainder of the course in the opposite direction, leaving all marks on the opposite hand.

Course A: Start established by committee boat off Champlin Creek; to Black and White Mo (A) in Great Cove, leaving it to port; to Nun No. 10 off Bay Shore, leaving it to port; to Red and Black Quick Flasher off Saltaire, leaving it to port; to Flashing Red No. 8, leaving it to starboard; to Flashing Green No. 15 off Point o'Woods, leaving it to port; to Flashing Green No. 5 off Nicoll Point, leaving it to port; to finish line between stakeboat and committee boat near Mo(A) in Great Cove. Course distance: 14.5 nm. *See special note above.*

Course B: Same as Course A, except omit Mo(A) and proceed directly to Nun No. 10 off Bay Shore, leaving it to port, etc.. Finish line will be between committee boat and Nun No. 10. Course distance: 12.5 nm. *See special note above.*

Course C: Same as Course A, except omit Mo(A) in Great Cove and proceed directly to Can No. 3 off Heckscher Park, leaving it to starboard; to Nun No. 10 off Bay Shore, etc.. Finish line will be between committee boat and Can No. 3. All yachts must leave Can No. 3 to starboard when finishing. Course distance: 12.5 nm. *See special note above.*

RACING INFORMATION (Cont'd.)

Course D: Start established by committee boat off Champlin Creek; to Nun No. 10 off Bay Shore; to Black and White Mo (A) in Great Cove; to finish line off Champlin Creek. Leave all marks to starboard. Course distance: 4.0 nm

Course E: Start established by committee boat off Champlin Creek; to Flashing Red No. 2 off Champlin Creek; to Nun No. 10 off Bay Shore; to finish line off Champlin Creek. Leave all marks to starboard. Course distance: 3.9 nm

Course F: Start established by committee boat off Champlin Creek; to Nun No. 10 off Bayshore, leaving it to starboard; to Black and White Mo(A) in Great Cove, leaving it to port; to Flashing Green No. 11, leaving it to port; to finish line off Champlin Creek. Course distance: 5.5 nm

NICOLL BAY COURSES

Course A: Start established by committee boat in Nicoll Bay; to Flashing Green No. 15 off Point o'Woods, leaving it to starboard; to Flashing Green No. 5 off Nicoll Point, leaving it to port; to Nun No. 10 off Bay Shore, leaving it to starboard; to finish line in Nicoll Bay. Course distance: 15.5 nm

Course B: West Island Course. Start established by committee boat in Nicoll Bay; to Nun No. 10 off Bay Shore, leaving it to port, to Red and Black Quick Flasher off Saltaire, leaving it to port; to Flashing Red No. 8, leaving it to starboard; to Flashing Green No. 15 off Point o'Woods, leaving it to port; to finish line in Nicoll Bay. Course distance: 15 nm

This course may be sailed in the opposite direction with all marks left on the opposite hand. For the West Island Race itself, there is a special starting sequence.

Course C: Start established by committee boat in Nicoll Bay; to Flashing Red No. 4 off Nicoll Point, leaving it to port; to Red and Black Interrupted Quick Flashing Green south of Patchogue Channel, leaving it to starboard; to finish line ½ mile north of Sailor's Haven. Course distance: 13 nm

Course D: Start established by committee boat in Nicoll Bay; to Flashing Red No. 18 off Point o'Woods; to Flasher No. 31 off Blue Point; to finish line in Nicoll Bay. Leave all marks to port. Course Distance: 12.0 nm

Course E: Start established by committee boat in Nicoll Bay; to Flashing Red No. 4 off Nicoll Point; to Flasher No. 31 off Blue Point; to finish line in Nicoll Bay. Leave all marks to port. Course distance: 12.0 nm

Course F: Start established by committee boat in Nicoll Bay; to Flashing Green No. 5 off Nicoll Point, leaving it to starboard; to Flashing Red No. 2 off Champlin Creek, leaving it to port; to Flasher No. 3 off Point o'Woods, leaving it to port; to Nun No. 28 in Nicoll Bay, leaving it to port; to finish line in Nicoll Bay. Course distance 10.0 nm

RACING INFORMATION (Cont'd.)

Course G: Start established by committee boat in Nicoll Bay; to Flashing Red No. 4 off Nicoll Point, leaving it to port; to Can No. 1 off Brown Creek, leaving it to starboard; to Flashing Red No. 18 off Point o'Woods, leaving it to starboard; to finish line in Nicoll Bay. Course distance 13.5 nm

Course H: Start established by committee boat in Nicoll Bay; to Flashing Red No. 4 off Nicoll Point, leaving it to port, to Nun No. 30 off Green Point, leaving it to starboard; to Flashing Red No. 18 off Point o'Woods, leaving it to starboard; to Flashing Red No. 2 off Champlin Creek, leaving it to starboard; to finish line in Nicoll Bay. Course distance 11.5 nm

Course I: Start established by committee boat in Nicoll Bay; to Flashing Green No. 5 off Nicoll Point, leaving it to starboard; to Flashing Red No. 2 off Champlin Creek, leaving it to starboard; to Flasher No. 31 off Blue Point, leaving it to port; to finish line in Nicoll Bay. Course distance: 16.5 nm

Course J: Start established by committee boat in Nicoll Bay; to Flashing Green No. 5 off Nicoll Point to Flashing Green No. 29 in Nicoll Bay; return to finish line in Nicoll Bay. Leave all marks to port. Course distance: 4 nm

SAYVILLE COURSES

Course A: Start established by committee boat 1/3 mile off Brown Point; to Flashing Green 29 in Nicoll Bay, leaving it to port; to finish line off Brown Point. Course distance: 5.0 nm

Course B: Start established by committee boat 1/3 mile off Brown Point, to Red and Black interrupted Quick Flashing Green in Patchogue Bay, leaving it to port; to finish line off Brown Point. Course distance: 4.5 nm

Course C: Start established by committee boat 1/3 mile off Brown Point; to Flashing Green No. 1 off Lone Hill; to Flashing Green No. 29 in Nicoll Bay; to finish line off Brown Point. Leave all marks to starboard. Course distance 7.5 nm

Course D: Start established by committee boat 1/3 mile off Brown Point; to Flasher No. 1 off Watch Hill Channel; to Red and Black Interrupted Quick Flashing Green in Patchogue Bay; to finish line off Brown Point. Leave all marks to port. Course distance: 6.5 nm

Course E: Start established by committee boat 1/3 mile off Brown Point; to Flashing Red No. 18 off Point o'Woods; to Flashing Green No. 5 off Nicoll Point; to finish line off Brown Point. Leave all marks to starboard. Course distance: 8.5 nm

Course F: Start established by committee boat 1/3 mile off Brown Point; to Flashing Green No. 1 off Lone Hill; to Flashing Green No. 29 in Nicoll Bay; to starting line stake boat; to Flashing Green No. 29 in Nicoll Bay; to finish line off Brown Point. Leave all marks to starboard. Course distance: 12 nm

RACING INFORMATION (Cont'd.)

SPECIAL COURSES

OCEAN RACE:

Ocean Course A: Start between committee boat and Buoy No. "4F1" off Fire Island Inlet; to Black and White Gong Buoy No. "J1" off Jones Inlet and return, leaving No. J1 to port. Course Distance: 26.5 nm

Ocean Course B: Start between committee boat and Buoy No. "4 FI" off Fire Island Inlet; to Nantucket Sea Lane Lighted Buoy "NB" and return, leaving Buoy "NB" to port. Course distance: 22 nm

Notes on Ocean Race:

1. Harbor start from Sore Thumb one hour prior to Warning Gun.
2. If adverse weather conditions necessitate cancellation of the Ocean Race, the committee boat will signal abandonment at Sore Thumb one hour prior to the Warning Gun.
3. If the Ocean Race is abandoned, there will be a "Bay Race" if wind and weather conditions permit.

Bay Race Course A: To Red and Black Quick Flasher off Saltaire; to Flashing Red No. 8, leaving it to starboard; to Flashing Green No. 15 off Point o'Woods ; to Flashing Red No. 5 off Nicoll Point; to finish line between committee boat and Flashing Red No. 2 off Hecksher Park. Leave all marks except No. 8 to port. Course distance depending on start locale.

Bay Race Course B: Through Snakehill Channel to Nun No. 6; to Mo(A) in Great Cove; to Can No. 3 off Hecksher Park; to finish line between committee boat and Flashing Green No. 11 off Brightwaters. Leave all marks to starboard. Course distance depending on start locale.

FAMILY RACE: Two separate two-day series will be raced; one from the eastern part of the Bay to Watch Hill, returning the following day; and one from the western part of the Bay to Watch Hill, returning the following day. Separate trophies for yachts from the east and west will be awarded on the basis of combined corrected time for the two days. Rules require not to set spinnakers and to have crews sleep aboard on Saturday night.

Eastern Bay: Saturday. Start off Brown Point at Sayville to Flashing Green No. 1 north of Barrett Beach to Flashing Green No. 5 off Nicoll Point to finish at Buoy No. 31 off Blue Point. Leave all marks to starboard. Distance 11.5 nm

Eastern Bay: Sunday. Start in vicinity of north end of Channel to Watch Hill to Can No. 3 off Heckscher State Park, leaving it to starboard, to finish off Brown Point. Distance 13.0 nm

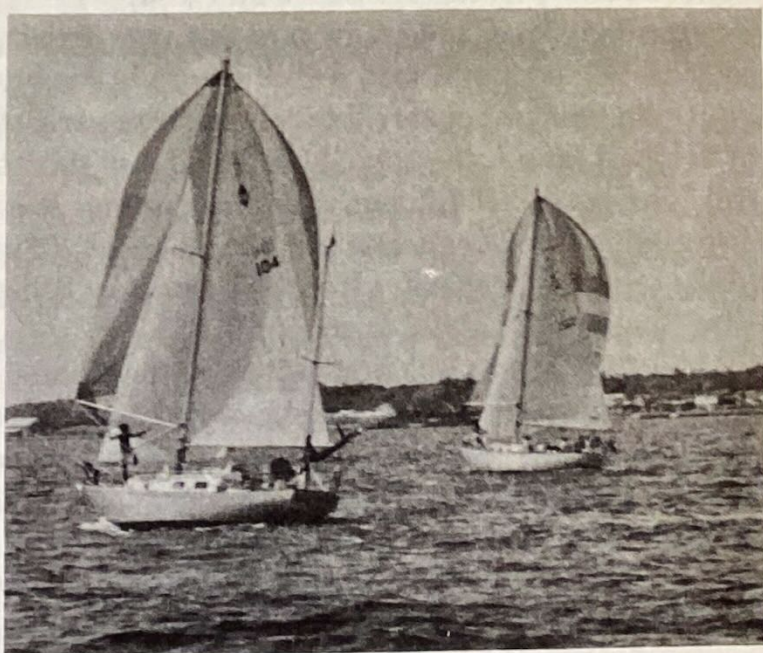
Western Bay: Saturday. Start in vicinity of Bay Shore Cove to finish at Buoy No. 31 off Blue Point. Distance 9.6 nm

Western Bay: Sunday. Start in vicinity of north end of Channel to Watch Hill to finish at Nun No. 10 off Bay Shore Cove. Distance 10.2 nm

RACING INFORMATION (Cont'd.)

FOULKE TROPHY RACE: Starting line between committee boat and Flasher No. 7 off Oak Island Channel; through center span of Robert Moses Causeway; leave Green Flashing No. 11 to starboard; to Flashing Green No. 1 off Howells Point, leaving it to port; return, leaving Green Flashing No. 11 to port, through center span of the Robert Moses Causeway; to the finish line between the stake boat and the flagpole at the end of the Babylon Yacht Club dock (which should not be used as a rendezvous for this race). Course distance: 34.0 nm.

The International Rules of the Road will be used instead of the Racing Rules between the hours of sunset and sunrise. All required lights must be shown.



A REVIEW — 1975

"It all began," Bill Carl said, "with three of us - Jamie Swan, Ted Zimmerman and me - saying something like 'wouldn't it be nice if...' Ted spoke to several of the fellows he knew who might be interested in an organization for Cruising type boats and the first meeting was called to order at the Babylon Yacht Club on June 11, 1951. If memory serves, there were 15 at the first get together with at least 8 others interested. Being first Commodore was the result of drawing the short straw."

To know where you're going it's best to know where you've been and where you are. For this reason we will sketch for our newer members a few scenes from the past. The history of the Cruising Club, written by Ev Seidenberg, was published in the 1965 Yearbook and reprinted and updated in the 1971 issue.

The founder's feelings were that there should be something for the many sailors in that region between one-design sailing and motorboating; that racing and cruising should coexist, and that all activities of the group should be fun. One of the early philosophers wrote that the club was born for iron men in wooden ships propelled by alcohol. Our current day deep-thinker might remark that the iron men have rusted a bit, the ships are mostly glass, but the propellant hasn't changed much!

In 1951 one half of the first fleet were catboats, the first race was around West Island, there was a "Perseverance Trophy" for the last boat to finish and the treasury had \$12.00 cash-in-hand. Two other decisions are recorded - in racing, only those sails used for going to windward were allowed and, while outboard-powered yachts were allowed in the club, they were not eligible for prizes! Hervey Garrett Smith designed the Burgee and the course. 15 boats raced.

The first Club Cruise took place in 1952 with four boats participating captained by Howard Ellis, Henry Post, Merritt Smith and Bud Wills. The Seidenbergs sailed with the Smiths.

The membership in 1953 reached 79 boats and No. 79 was "Sumaka" owned by Fred Eggerstedt.

An item in the 1955 chronicle rather exemplifies the club's social development. "Ev Seidenberg entertained the fleet during the annual cruise by losing a midnight fight to Teddy; falling overboard and disappearing in the darkness with the outgoing tide through Sebonac Cut; by now this type activity was COMMONPLACE anyway, so John Beinert performed a Fire Dance in his bare feet on the beach fire!"

John Beinert appears throughout these early stories under different guises - here as "Honest John," there as "Lobster John of the Three-mile Harbor bum-boat," and still later as an afterdinner speaker of whom it was written "gave a brilliant legal dissertation titled *Seduction at Sea and Related Subjects*." John has also served this Club in every capacity from Yearbook Chairman through Fleet Captain to Vice-Commodore and Commodore.

Mystic Seaport was first visited on the Annual Cruise in 1957. This was also the first year since 1952 that children were permitted on the cruise. Hmmm...

In 1959 one Bob Paterson was reported to have shot an albatross during the cruise causing heavy rains, fog, and a smaller than usual yield of shellfish at Sebonac. As a sacrifice to the Albatross God, Mr. Paterson was elected Commodore in 1960.

Thirty-five boats made the 1961 cruise the largest to date. THE NEW YORK TIMES published Charlie Palmer's photo essay of the cruise and Ruth and Harry

A REVIEW — 1975 (Cont'd.)

Jonas gave a cocktail party for the fleet at the Canoe Place Inn.

Racing class "S" came into being in 1962 to join the Performance class. The fleet began a rapid expansion period - one that added almost one hundred boats in three years!

The 1963 season began with the Cruising Club now a Corporation and with 45 boats at the Commissioning Day Ceremonies. The summer cruise had 38 boats. The Ladies race was enlivened by an underwater treasure hunt performed by the race committee. It seems that one of the contestants tossed two-fifths of magic elixir toward the committee boat - neither one quite reaching the mark, "over the side" went the good judges, finding one and abandoning the other. No mention as to the results of the contest.

The log for 1965 opens with a January 1 hangover cruise for hardy Babylonians. 36 boats on the Annual Cruise. A Special Cruise Award went to Ed Macy for his trip to Maine waters in "Reverie", and the Blue Water Award to Stu Baldwin for his round trip voyage to Bermuda. The cruising year ended with Boyd Max doing a back somersault into the water around the Cedar Lane Boatyard during the Fall Cocktail Party.

The cruising guide was published for the first time in 1966. The Commodore's race was sailed in a 50 knot easterly. 43 boats made the annual cruise.

Club membership reached 350 in 1967. Fog, rough seas, rain, and squalls reduced the Annual Cruise to 37 boats. Jack Young in "Courtesan" raced in the Marblehead-Halifax fog-a-thon and Eric Forsyth sailed his 35 foot "Iona" to Lunenburg, Nova Scotia and back, a distance of 1400 miles.

1968. 388 members, 295 boats, 57 boats on the Annual Cruise and 70 starters in the West Island Race! This was the year of the first SBCC race week at Great River. It was noteworthy that John Beinert went up the mast rather than into the drink at the Annual Clambake. Jack Young in the Bermuda race, Don Streit's second cruise to Bermuda and back, and Ed Rickett's spring trip from Florida, were the outstanding "off the bay" voyages.

In 1969 power boats were allowed to fly the burgee and incoming members were required to own cruising-type sailboats. 65 yachts on the Annual Cruise. The Blue Water award went to Chet Phipps who cruised and raced "Peregrinator" to Isla Mujeres - around the tip of Yucatan - and back. Art Bertapelle, in writing about the end of the '69 cruise, gave us this picture: "Our group enjoyed Menemsha Pond anchorage with its gulls, its courteous people, its solitude. One portable t.v. set aboard "Skylark" for the children, one aboard "Sea Cloud" for the adults, we stayed up far into the night watching the moon landing telecasts, astronauts setting foot on the moon for the first time - they're on the moon! Orchestra seats on the Cabin sole, balcony seats draped over the main boom. The man in the moon is a reality."

Rain, mist, fog for the start of the 1970 cruise. 67 boats made the trip - some to Block, some to Nantucket, some to Newport. 108 bottles of champagne given out at the Great River breakfast grouping. Snowball fight during Discoverers Day race, 40° with 30 knot winds NNW. Year ended with the Christmas party at L.I.Y.C. during which 10 gallons of egg nog was drunk, certainly.

1971 saw 66 boats on the Annual Cruise and 100 at the Champagne Breakfast in

A REVIEW — 1975 (Cont'd.)

Great River. At the last rendezvous of the year, held at Cedar Point, there were 5 wooden sail boats. It does seem sad that this item is noteworthy.

Two groups cruised "out East" in 1972, one went to Block Island Sound, Vineyard Sound and Buzzards Bay; the other to Peconic Bay, Fishers Island and Long Island Sound. Fleet totaled 61 boats. The Blue Water award went to Dr. Sternberg for his cruise to Bermuda, the return made in gale force winds for the most part.

A bright new handicap system was unveiled in 1973 by Ed Miller. The system is based on phases of the moon, the number of coats of wax on one's hull and other criteria too technical to outline here, all cranked through a computer and understood by only one man on earth - Ed Miller. The system has accomplished one very important point: it has done away with any discussion of the handicap system. The Twilight series was introduced and between unlighted buoys, unlighted power boats and unmarked shoals, it has made very long nights for some sailors.

The cruise fleet again split at Shinnecock, some going through the canal to Peconic Bay, others out the inlet and around Montauk Point, but they met again at Block Island. Cuttyhunk, Narranganset Bay, Hadley Harbor, Nantucket, Watch Hill, and Sakonnet were visited. 77 yachts made the voyage. 60 yachts entered the West Island Race. 114 bottles of champagne were distributed this year - a record, for the record.

The Sand Fire Race was instituted in 1974. This is held in conjunction and competition with the Atlantic Highlands (NJ) Yacht club and is a two day ocean race affair. The "feeder" saw 34 boats race from Long Island Sound to Sandy Hook and 62 raced back. SBCC won.

The cruise visited Block Island, Newport - watched the America's Cup challenger and defender work out - Stonington, Mystic Seaport, Hamburg Cove, Three Mile and Deering Harbors. 90 yachts were listed. 54 in the West Island Contest. The smaller number of starters compared to the other years *might* have been due to the fact that the wind was due East at 25 knots with gusts to 35. Great River week gets more popular each year and the best part is the number of families that participate.

And now it is time to review 1975's activities.

Bob Foreman has contributed the racing review, Ed Johnson the cruising data and Bob Sheppard the entertainment group's accomplishments.

We have used the "Masthead" as a source for dates and happenings, but you must realize that the editor-in-chief of that publication during the last year was Bill Dwyer - the mad hatter from Brown; the man who brought you Sean Kinoshito; the man whose January issue announced that Prof. J.S. Carberry, after posing as a sweeper in the Dupont Research Lab, would be our guest speaker and whose topic would be "the Kevlar Mystique or the Fiber "B" hoax;" the man who used the entire July "Masthead" to discuss the derivation of the word "Yot" and, finally, the man who caused the Board of Directors to print a disclaimer of responsibility for anything appearing in the "Masthead!" This, dear friends, is the author of much of our source material.

The annual meeting and election of officers was held on January 23rd at

A REVIEW — 1975 (Cont'd.)

LaGrange. Commodore Thayer reviewed the year, Gene Reardon the financial picture, Bob Foreman the regattas, and Dick Daytz the new (or old) but now official design of the burgee. All officers were re-elected.

191 members and guests attended the *Spring Dinner Dance* held on February 1, our permanent trophies were presented and Commodore Thayer was presented with the Sandfire Trophy won by SBCC in competition with Atlantic Highlands (NJ) Yacht Club.

"Operation Sail 1976" was previewed at an April membership meeting by Richard Powell, an assistant to the Director of the Bicentennial effort. Mr. Powell also told about his journey across the Atlantic on "Eagle", during which they were met with winds of 80 knots and "heeled" at angles up to 55 degrees!

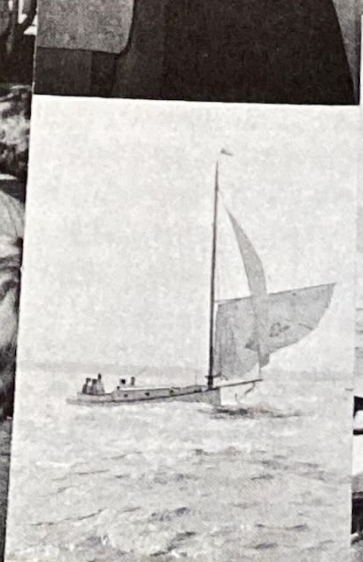
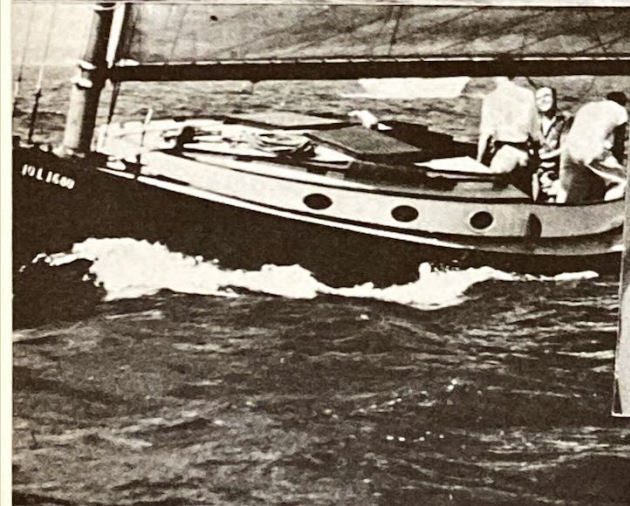
The new Bayshore Y.C. Clubhouse was the scene of the Spring Cocktail Party on May 10th. 375 attended and enjoyed the first affair ever at this fine new facility. Mary and Bob Smith and Barbara and Bill Dunleavy, together with a cast of thousands, prepared clam chowder, lobster bisque, chicken, cheese fondue, and beer. "Early bird" and Tune-up races were held on the 10th, 11th, 17th, and 18th. Weather was excellent. The L.I.Y.C. Invitational was sailed on the 25th in winds of 35 knots and through a bay full of white caps. The next day was Commissioning Day and the single handed Creepstakes were sailed in almost calm winds - so calm that the current (!) in the bay was a factor. Flag raising and Memorial service were followed by the Salty Sam Auction, Flea Market, and Hot Dog Sale. The Narrasketuck Invitational was sailed on the 31st in fog so thick that Gorty Baldwin missed the turning mark at the east end and had to pay a toll to get his boat out of the Smith Point Park parking lot. So ended May.

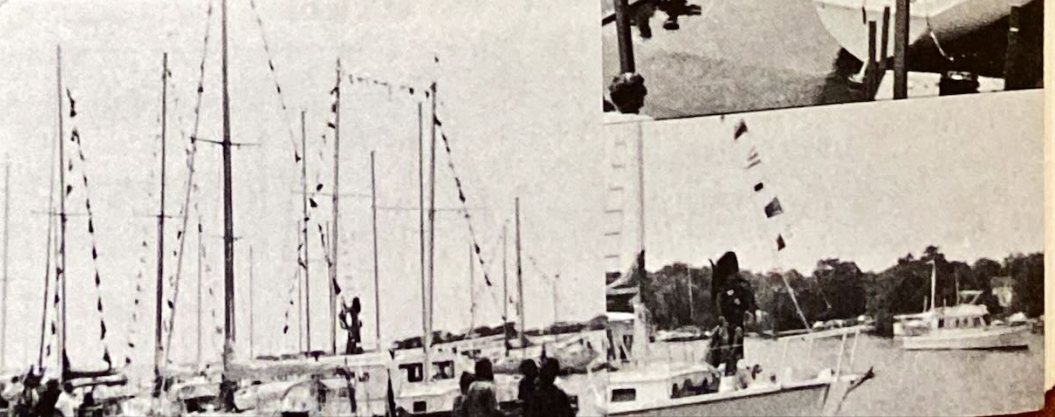
The Ocean race on June 7th was another tester with winds varying from 5 to 25 knots. Louis Orr hourglassed his spinnaker on the return from Jones' inlet and couldn't get it down until he was back in the bay. The Commodore's Cup was sailed in a light Southeast breeze and many boats carried spinnakers on 3 of the 4 legs. Ed Buyer carried his upside down and little Jackie Forman pointed out this distinctive innovation to the entire fleet!

The Smith Trophy Race, sailed (or drifted) on July 4th, had *no* finishers within the time limit. The ladies raced on July 6th. Skipper Beryl Menger, while on starboard tack, was joined in the cockpit by a fellow Tartan owner. Unfortunately her guest brought her boat in with her, making a rather bad impression - especially on the bright work.

The Annual Cruise began on Saturday July 12th, in a light Southeast breeze and light rain. The bridge at Ponquogue opened only partially and this, plus a bad current, caused three boats to hit it. Hervey Garrett Smith would have cheered the attack. On Sunday 50 club boats challenged the Shinnecock inlet bound for Block Island. Waves reported as 6 to 8 feet, wind at 20. Good seamanship prevailed and all arrived safe - albeit, tired - and sound. 140 attended Smorgasbord at Smugglers Cove on Monday after a day spent relaxing on Block.

From Block one part of the fleet sailed to Cuttyhunk, Hadley Harbor, Nantucket, Edgartown, Menemsha, Pt. Judith, Montauk and back to Shinnecock on the 25th. A second group sailed to and up the Sakonnet River to Fall River. The "Fall





A REVIEW — 1975 (Cont'd.)

River Times" of July 17th had a picture of the fleet anchored in Battleship Cove. Members toured the U.S.S. Massachusetts. This group then proceeded to the Bristol Yacht Club on the 17th and enjoyed a fish-fry provided by BYC. The next day, after a morning tour of the Pearson Plant, the group sailed to Potters Cove for the night.

A leisurely sail on Sunday to Stonington where boats that had gone from Shinnecock inside to Sag Harbor, Three Mile Harbor, Montauk, Greenport, and Fishers Island joined the Flotilla. The next stop on the tour was Essex and Hamburg Cove. From here 40 people were ferried up the river to the Godspeed Opera House and a performance of Jerome Kern's *Very Good Eddie* prior to its return to Broadway.

Now it was time to start home - some around Montauk, the rest through Greenport or Sag Harbor to Shinnecock. Saturday night over 100 attended the Glad-to-be-home-franks-and-beer Party in Great River.

Another great cruise too soon over.

The following were "logged in" as members of the cruise fleet: *Aequanimitas, Aranar, Awiki II, B & B, Barcarolle, Blue Norther, Bora, Butterfly, Chico, Courageous, Deidre-L, Destiny, Dotty Ann, Duchess, Dulcinea, Easy Jigs, Encore, Eventide, Fang, Finale, Flighty Mist, Free Spirit, Freewind, Good Wind, Heather, Hephzibah, Hollandia II, Isdon, Jolie Madame, Kandy Bar, Kirsty, Kismet, Lady Lynn, Lena, Loon, Lorna Doone, Manatuck, Mandalay, Maryanne, Menehune, Merri Mac, Mouette, Nor' Easter, Norma, Newmark, Old Salt III, Orca, Osprey, Pisces, Polly Bee, Puritan, Reliance, Sagwa, Sanderling, Sea Dream, Sea Hawk, Sea Jay, Sea Plus, Sea Sprite, Shearwater, Skylark, Snow Goose, Solace, Southwind, Tamb, Terryfier, Thirsty Boots, Ting Hao, Tranquilizer, Troubadour, Utopia, Valhalla, Vi, Wandelaar, Warlock, Wilde Thyme, Winsom.*

August 9th, 54 boats drifted across the starting line for the West Island Race. The winds did pick up but remained "flukey." Charlie Hayward beached his boat on the sand bar west of "Crazy Charlie" and Jack Layton, in a fine display of brotherly love and fidelity, followed suit.

Great River Week was great. Following Ecumenical services led by Father Langley ("Quadrant") and Rev. Parker ("Charisma"), on the lawn at Snapper Inn, champagne was distributed to a seemingly endless line of dinks. 144 bottles were given out followed by a kite flying contest - or was it a flying contest with or without kites? - 183 kites anyway. Skylark circled the raft-up with a bagpiper in full-dress regalia squealing away on the bow.

Helen and John Beinert acted as race committee for the week and did an outstanding job - especially on Saturday when the wind, moderate all week, piped up to about 30 knots with gusts. Yes, some did fly spinnakers and yes, that was Steve DeLise climbing his mast to rescue his halyard.

The "Great River Blast" held at Oakdale Yacht Service - under a green and white tent - was super. The Dunleavy-Smith catering group carved roast beef to go with corn, salad, chili, and beer. Music by Volker Kind, Vocals by Beryl Menger.

The following participated in the weeks activities:

Aranar, Banshee, Blue Norther, Butterfly, Chanson, Courageous, Dawn Too, Easy Jigs, Endeavor, Finale, Freewind, Ghost, Happiness Is, Hephzibah, Isdon,

A REVIEW — 1975 (Cont'd.)

Jacqueline II, Jolly Jack, Judylin II, Kandy Bar, Kleine Brise, Lady Lynn, Lady Lou, Lena, Lorient, Mary Anne, Merry Ann, Miramar, Miss Betty, Norma II, Odin, Puritan, Quadrant, Quintet, Ruddy Duck, Sanderling, Sea Hawk, Sea Sprite, Sinn Fein, Skylark, Sumaka IV, Sundance, Therapy, Thirsty Boots, Tradition, Valhalla, Warlock, Wilde Thyme, Willopeg.

The Foulke Trophy or night race, August 23, was sailed in near perfect conditions with gently southeast winds. The Murrays kept a candle burning in the Babylon Yacht Club window for so long, waiting for Louis "Sympatico" Casey to finish, that the curtains caught fire.

The first-ever team race - 3 teams of 6 boats each from SBCC, Babylon YC and L.I.Y.C. - competed on Sunday the 24th. The team with the best overall time wins and SBCC prevailed by 2 seconds!

Sandfire '75 sponsored jointly by SBCC and Atlantic Highlands YC (NJ) was run by Jack Layton this year. The "feeder" down on Saturday the 30th was sailed in winds which diminished from 35 knots to 15 and went from west to northeast.

For the return on Sunday over 60 boats in four classes charged into 4 foot seas and blustery winds from the east-northeast at 20-25 knots. The winds diminished as the lead boats reached Jones' inlet only to shift to the east-southeast and climb to 30 knots. Bob Forman said that this ocean looked like the prologue to "Victory at Sea." The party, complete with banjo band and buffet, at Robert Moses Yacht Basin was only sensational.

The class race on September 28th was notable not only for the level of competition, but also for the strange way Jolie Madam's spinnaker leaped out of its turtle and into the sea, causing said boat to give up its lead in order to retrieve it, thus allowing a green boat crewed by Kelly, Casey, Reardon, and Dwyer to win the Corvette Section. Oh, the wonder of it!

The "Last Chance" on November 1st was a beaut. 17 skippers in winds that topped 40 knots. Louie Orr executed a perfect double spinnaker broach and, meeting this challenge, Jack Layton turned his boat upside down with a spinnaker knockdown.

The Fall Cocktail Party was held at Coastal Yachting and the menu consisted of clams, clam chowder, lobster bisque, beer and the ubiquitous BYOB. Sly Chairman Bob Smith pretended that it was his birthday so that he would get extra cake and kisses from the pretty ladies... it worked!

On November 14th at LaGrange, following an excellent smorgasbord, Norris Hoyt took us via slides and words on quite a trip aboard his 41 foot sloop: from Newport down L.I. Sound, up the Hudson River, through Lake Champlain and the Richelieu, down the St. Lawrence, around Nova Scotia, and back to Newport. The trip was punctuated by references to events that took place during our Revolutionary War. It was very well done.

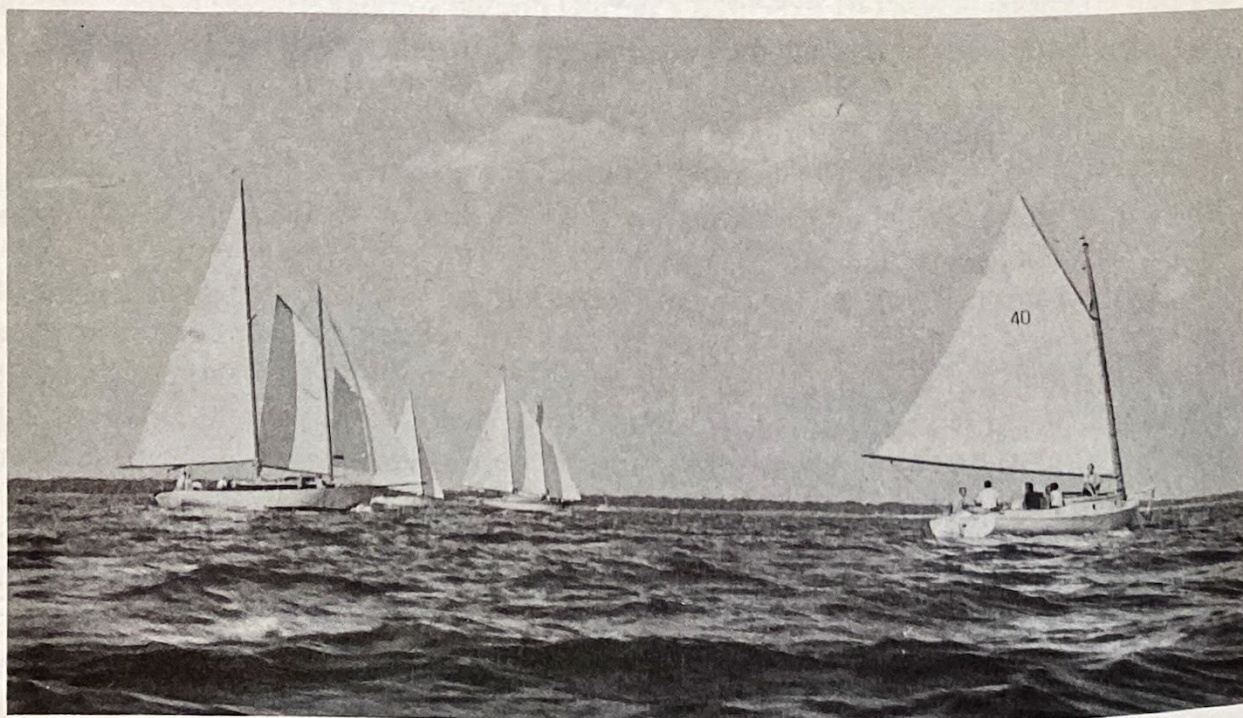
Our Christmas Party at the L.I.Y.C. just keeps getting bigger and better each year. More hors d'oeuvres, more egg nog, more sea stories, fewer late arrivals and early departures.

In reading over this epistle of the year's doings, we find that we have overlooked a lovely lady. At each of our membership meetings Patricia Kelly has done a beautiful

A REVIEW — 1975 (Cont'd.)

job as Trophy Committee Chairwoman. While she does give credit to the other members of her Dublin law firm, the truth is that 85% of the work is done by Pat. Her good taste is exemplified by her selection of the imaginative racing mementoes that you have received during the last two years.

Now on to '76, the year of the Tall Ships and our Bicentennial Celebration.



A PLEA FOR COMPETENCE

It is written in the Cruise Guide that the SBCC *rejects responsibility for the safety of its members. However, if you are in trouble you will be helped.*

Doesn't sound like a very friendly club, does it? It seems like a very hard and cold statement to put in print and by now you are probably wondering about whatever happened to our fraternal togetherness.

The reason for the statement is to strongly emphasize that the SBCC is not responsible for the actions of a skipper and his crew. The club schedules races, cruises, and rendezvous as published in the Yearbook. Should an unfortunate incident occur during any of the scheduled events, the skipper or skippers involved will be held accountable. Each skipper is responsible for the safety and actions of his guests, and crew.

As USYRA (formerly NAYRU) puts it and I quote, "*The safety of a yacht and her crew is the sole and inescapable responsibility of the skipper, who must do his best to insure that the yacht is fully found, thoroughly seaworthy and manned by an experienced crew who are physically fit to face bad weather. He must be satisfied as to the soundness of the hull, spars, rigging, sails and all gear. He must insure that all safety equipment is properly maintained and stowed and that the crew know where it is kept and how it is to be used.*"

It is expected that a skipper will sail and handle a boat within the limits of his or her competence, and what, may you ask, is a competent skipper?

A competent skipper knows the safety requirements, has the safety equipment and knows when and how to use the equipment. He continually strives to improve his boating ability through education or self-study and practical experience. A competent skipper has the ability to know when the risks are acceptable and when doing something is a damn fool stunt. Winning is wonderful, but sometimes the race has to take a back seat to seamanship and safety since the competent skipper's first responsibility is to bring the boat, gear and most importantly, everyone aboard home to a safe harbor. While racing offshore, the competent skipper will conform to the USYRA as well as the Coast Guard safety requirements.

For many of us the sea is a sanctuary; a place where our spirits are enlivened by the natural forces of air, wind and water; a place to which we sojourn and leave the world behind — and find tranquility. But the sea is powerful and has one criterion only — *COMPETENCE*. She is the most pragmatic and demanding of all females and will quickly shake a crew down according to his or her ability. But she is scrupulously fair and doesn't give a hoot about sex, race, creed or color. Make a mistake or do something stupid, you will pay for it and it doesn't matter whether you are male or female, white or black, Christian or Hindu. You can't put her off with soft words or bright promises; she is not that kind of a female. She seldom overlooks a mistake or forgives it and no amount of blarney will ever move her. Even mighty Lady Luck can only take you a short distance over the sea. The sea, for those who would woo her from a small boat, is reserved for the *COMPETENT*.

It is my personal opinion that there isn't a skipper in this club that would refuse help to anyone. Our club has a proud and unassailable record in this regard — however, when on the sea or bay, *Competence* (as well as *God*) should be your constant companion.

— The Editor

RACE WINNERS – 1975 (CLASS, FIRST, SECOND & THIRD PLACE)

PERMANENT TROPHY WINNERS

Commodore's Cup – Jacqueline II
 Foulke Trophy – Lena
 Sympatico Trophy – Unicorn
 Smith Trophy – Not Awarded
 Deale Trophy – Falcon
 Schnur Trophy – Freewind
 Governor's Cup – Chanson
 Broadside Trophy – Banshee
 Cruising Club Crock – Not Held
 Sandfire Fleet – Liebchen
 Sandfire Team – SBCC

EARLY BIRD SERIES

S Chanson, Kandy Bar
 M Happiness Is
 I Jacqueline II, Queen E, Decatur
 II Dovekie Tie with Sunriser tie with Funny Mink

TUNE-UP SERIES

S Dawn Too
 M Happiness Is
 I Decatur tie with Sunshine
 II Mirage, Amen

CREEPSTAKES

S Kandy Bar, Loon
 M Liebchen
 I Sunshine, Miss Betty II, Jeanie
 II JudyLin, Annie B.

OCEAN RACE

S Merry Ann, Dawn Too, Warlock
 M Liebchen
 I Jacqueline II
 II Jeanie
 Multihull – Illusion

COMMODORE'S CUP

S Chanson, Magic
 M Unicorn, Happiness Is
 I Jacqueline II, Mystic, Lorien
 II Funny Mink, Miss Betty II, Sea Wench

SMITH TROPHY

S No Finishers
 M Within
 I Time
 II Limit

LADIES DAY

S Chanson
 M Willopeg, Merry Ann
 I Decatur
 II Banshee, Amen

SUMMER SERIES

S Chanson
 M Slim
 I Lorien, Decatur
 II Sumaka IV

WEST ISLAND

S Chanson, Falcon, Ghost, Mandalay
 M Willopeg, Unicorn
 I Lorien, Finale, Decatur, Jacqueline II
 II Miss Betty II, Dovekie, Puritan, Valkyrie

GREAT RIVER THREE DAY SERIES

S Chanson, Ghost
 M Merry Ann, Willopeg
 I Lorien, Sunshine, Kandy Bar
 II Lena, JudyLin, Miramar

GREAT RIVER SIX DAY SERIES

S Chanson, Ghost
 M Merry Ann, Willopeg
 I Lorien, Sunshine, Kandy Bar
 II Lena, JudyLin, Miramar

FOULKE TROPHY

S Warlock, Chanson, Dawn Too
 M Merry Ann, Freewind
 I Sunshine, Lorien
 II Lena, Banshee, Miss Betty II

SANDFIRE FEEDER

Liebchen, Dawn Too, Mistress, Ghost

SANDFIRE

I Nuf, Happiness Is
 II Shadow, Jolie Madame, Courageous
 III Chargette, Warhorse

DISCOVERER'S

S Ghost, Dawn Too
 M Liebchen
 I Jacqueline II, Lorien, Decatur, Summerwind
 II Lena, Miss Betty II, Valkyrie



RACE WINNERS — 1975 (CLASS, FIRST, SECOND & THIRD PLACE)

WIND UP SERIES

S Dawn Too, Warlock
M Merry Ann
I Decatur, Blue Norther

LAST CHANCE

S Mandalay
M Liebchen
I Dawn Too, Finale
II Valkyrie

INVITATIONALS

LIYC

S Chanson, Magic, Warlock
M Freewind
I Bandersnatch, Resistance
II Teal

Narrasketuck

S Warlock, Lorien
M Happiness Is, Unicorn
I Decatur, Bandersnatch
II Jeanie

BSYC

S Magic, Chanson, Mandalay
M Freewind, Willopeg
I Decatur, Queen E, Flighty Mist, Resistance
II Jeanie, Funny Mink

BYC

S Chanson, Ghost, Magic, Mandalay
M Happiness Is, Unicorn, Freewind
I Flighty Mist, Decatur
II Astarte, Jeanie, Bandersnatch

GSBYRA

S Warlock, Nelly Bly
M Slim
I Decatur, Lorien
II Jeanie, Sunriser, Bandersnatch

BYC FALL SERIES

S Dawn Too, Warlock
M Jacqueline II, Merry Ann
I Decatur, Starshine, Flighty Mist
II Teal, Mirage

MORC STATION 44

July Series — Merry Ann, Unicorn, Happiness Is,
Dawn Too
Season — Happiness Is, Merry Ann, Unicorn

CLASS RACE

Tartan — Lena, Miss Betty II
Corvette — Kandy Bar, Jolie Madame
Morgan 34 — Lorien, Summerwind

TWILIGHT SERIES

Eastern 1st
Lorien, Emanon, Serenity, Queen E

Eastern 2nd
Lorien, Happiness I, Queen E

Eastern 3rd
Lorien, Serenity, Queen E

WESTERN SPRING

S Chanson, Courageous
M Freewind tie with Willopeg
I Mystic, Sunshine, Bandersnatch, Challenger
II Jeanie, Annie B

WESTERN SUMMER

S Chanson
M Unicorn, Merry Ann
I Sunshine, Mystic
II Banshee, Annie B



MEMBERS — South Bay Cruising Club — 1976

Member, (Wife's Name), Address	Phone No.	Sail No.
Abrams, Charles F. (Jean), P.O. Box 291, Syosset		236
Alberi, James (Lynn), 276 Durkee Lane, Patchogue	289-4092	238
Alderson, Thomas M. (Carol), 1120 Hicksville Road, Massapequa	798-4435	362
Andrews, Clifford (Barbara), 8 Park Circle North, E. Farmingdale		Power
Anisko, Joseph, 185 Anisko Landing, Oakdale	589-6918	144
Ardito, Joseph (Joan), 4 Pansmith Lane, W. Islip	669-6132	348
Atwood, Frederick L. (Elizabeth), 272 Ocean Avenue, Islip		107
Atwood, Harold O. (Charlotte), 71 Bayside Place, Amityville	691-3276	Power
Aubin, William M. (Joyce), 9 Pansmith Lane, W. Islip	669-1715	555
August, Barry F., D.D.S. (Iris), 270 E. Main Street, Bayshore	665-2028	1759
Avitable, Matthew (Eileen), 132 Terrace Road, Bayport	363-7012	1295
Baldwin, G. Gorton, Jr. (Sarah Lee), 188 West Islip Road, W. Islip	669-9247	4271
Barton, Mark Q. (Lois), 30 Colonial Drive, East Patchogue	289-0886	133
Batty, Derek, (Jill), 26 Trask Lane, Babylon	587-1450	1325
Batty, Peter H., 15 Sumpwams Place, Babylon	661-3376	325
Batty, Walter (Vi), 15 Sumpwams Place, Babylon		196
Baum, Reuben (Beatrice), 30 Shelly Drive, Massapequa	541-1819	283
Becker, Frederic A. (Pat), 64 Cormack Court, Babylon		22
Beinert, John (Helen), 32 Robert Street, Babylon	669-3936	53
Belfield, Robert E. (Joan), 104 Benson Avenue, Sayville	589-3635	708
Benedict, Ronald W. (Dotty), 901 Ocean Avenue, Bohemia	589-3751	701
Berdolt, John P. (Margaret), 20 West Islip Road, West Islip	669-6617	199
Bernard, David (Vivian), 44 Highland Avenue, Patchogue		314
Bernichon, Clay A. (Marion), 98 Sequams Lane West, West Islip	661-0344	60
Bernstein, Leonard A. (Diane), 380 North Niagara Avenue, Babylon	888-8103	789
Bertapelle, Arthur H. (Fran), 25 Leaside Drive, Great River	581-0260	279
Bichsel, Arthur W. (Marilynn), 505 Bay 5 Street, West Islip	661-4625	1161
Bickford, Newell H., (Janet), 43 Kentucky Avenue, Bay Shore	665-7189	2720
Biedermann, Robert G. (Bettie), 27 Star Lane, Levittown	731-0885	1777
Blue, Frederick R., Jr. (Ann), R.F.D. #1, Ashland N.H.	*968-3305	
Boettger, Macklin, 123 Araca Road, Babylon		
Bogan, John H. (Louise), 245 Richmond Avenue, Amityville	842-1020	263
Bolger, Tom (Alice), 8 Dahill Road, Old Bethpage	249-7017	141
Borntraeger, Henry W. (Connie), 15 Wigtel Lane, Bellport	286-3563	310
Boulukos, George N. (Kathy), 862 South Grove Street, Freeport	868-4092	2885
Boyajian, John (Dixiana), 51 Bay Way Avenue, Bay Shore	665-5233	287
Boyd, Donald M. (Lou), 111 South Bayview Avenue, Amityville	264-3518	433
Boyd, Richard F. (Frances), 57 South Bay Avenue, Islip	581-0865	142
Bracco, William (Mildred), 28 Burnage Lane, Babylon	661-2530	Power
Braddon, Fred (Evelyn), 70 Village Line Road, Babylon	669-1502	21
Bradt, William F. (Penny), 179 Sequams Lane Center, W. Islip	669-4523	
Brady, Warren B., (Mei), Mattituck Hills, Mattituck	475-1211	63
Brass, Melvin J. (Joyce), 62 Craig Road, Islip Terrace	581-3394	146
Brayshaw, William S. (Ruth), 100 Peninsula Drive, Babylon	669-8759	12
Breul, Harry T. (Ruth), 111 Benson Avenue, Sayville	589-4657	2904
Brice, Steve (Cary), 144 Ocean Avenue, Amityville	264-0872	732
Brink, Robert E., 12 Meade Avenue, Babylon	669-7014	725
Brooks, Edward A., Jr. (Katherine), Oak Neck Lane, W. Islip	587-4333	260
Brooks, Owen E. (Marilyn), 130 Riverside Avenue, Amityville		Power
Brown, Donald P. (Robin), 12 Livingston Road, Bellport	286-2272	2420
Brown, James D. (Barbara Ann), 186 Siegel Boulevard, Babylon		435
Brown, Richard E. (Dot), 118 Sequams Lane Center, W. Islip	669-8238	51

*Outside 516 Telephone Area

MEMBERS — South Bay Cruising Club — 1976 (Cont'd.)

Member, (Wife's name), Address	Phone No.	Sail No.
Brown, Robert Z. (Barbara), 334 Second Avenue, Bayport	472-3057	106
Buyer, Edward M. (Marilyn), 16 Sunset Drive, Sayville	567-0382	162
Cahill, James F. (Mary), 75 Hampton Road, Garden City		204
Camp, Hilbert, (Norma), 891 Karshick Street, Bohemia	589-5131	240
Canning, John A. M.D., (Pearle), 13 Lacy Court, BluePoint	363-2241	190
Cantor, David (Bonnie), 121 Arrandale Avenue, Kings Point		774
Carl, Robert (Betty), 23 Hewleh Court, Babylon		Power
Carr, Frank (Betty), 715 Milligan Lane, W. Islip	669-6641	709
Casey, Louis John, (Gail) 118 Center Bay Drive, W. Islip	587-8388	10221
Ceilly, Ward V., M.D., (Linnea), 1 West Concourse, Brightwaters	666-7082	702
Charbonneau, Richard (Della), 14 Clearwater Avenue, Massapequa		
Chasas, Joseph W. (Daris), 14 Sequams Lane West, W. Islip	669-2689	295
Ciocys, William F. (Peggie), 24 Kittiwake Lane, Babylon	669-3577	424
Clarke, Edward C. (Kathleen), 37-14 90th Street, Jackson Heights	*429-7183	328
Cleaves, Irvin D. (Virginia), 33 Foster Avenue, Sayville	589-0131	316
Cohill, Thomas W, (Toni), 128 Grand Central Avenue, Amityville		
Cohn, Bennett L. (Carol), 345 Woodland Drive, Brightwaters	666-8883	345
Colleran, Harry J. (Marilyn), 31 Cutter Court, W. Islip	669-8689	145
Colombo, Peter (Lorraine), 44 North Pinelake Drive, Patchogue	475-2131	383
Cook, William H. (Mary Ann), 45 Elder Road, Islip	581-5657	220
Cosgrove, William F. (Lee), 6 Greenhill Lane, Huntington	368-5003	524
Criminaldi, John A. (Louise), 108 Drake Court, W. Islip		1108
Crowe, John E. (Lee), 54 Swan Drive, Massapequa		347
Crowley, Robert J. (Joan), 20 Mainsail Drive, Patchogue	289-8395	14656
Culviner, S. Prall (Frances), 770 Anderson Avenue, Cliffside Park, N.J.	*224-3256	1134
Cummins, William R. (Karen), 22 Myrtle Avenue, Keyport, N.J.	*264-5960	234
Curry, Peter R., 488 Deer Park Avenue, Babylon	587-6226	354
Curtis, Bernard M., Dr. (Barbara), 1538 Earl Road, Wantagh	785-6286	
Cyr, Larry S. (Jo), 73 Rutherford Street, Berkley Heights, N.J.	*665-0586	207
D'Agrosa Peter (Barbara), 75 West Lane, Sayville		192
Dauch, Thomas E., Jr. (Jan), 45 Evelyn Road, West Islip		292
David, Robert T. (Marilyn), 6 Central Avenue, Amityville	691-0613	724
Davies, Anton F. (Evelyn), 23 Cutter Ct., West Islip	587-0736	532
Davis, Raymond, Jr. (Anna), 28 Bergen Lane, Blue Point		52
Davison, Don W. (Marjorie), 16 Lewis Circle, Babylon	Power	
Davison, Oliver (Virginia), 5 Atlantic Avenue, East Rockaway	599-2342	256
Davison, Russell S. (Jeanne), 3 Sumpwams Avenue, Babylon	669-0844	217
Daytz, Richard M. (Sheila), 12 Larkspur Drive, West Islip	669-6993	10207
DeLise, Stephen W. (Pamela), 106 Anchorage Drive, West Islip	587-6587	14501
deMurias, Ramon (Carlin), 74 Douglas Avenue, Babylon	669-0034	1258
Deutsch, Lowell A. (Jeanette), 36 Bridle Way, Oakdale	589-3875	716
Dreher, Warren F. (Dail), 967 Gardiner Drive, Bay Shore		186
Dunleavy, William P. (Barbara), 243 Bay View Drive, Oakdale	567-0594	423
Dunlop, Robert F. (Peggy), 82 Sequams Lane West, West Islip	669-4807	176
Dwyer, William J. (Barby), 73 Elder Road, Islip	581-3606	2377
Eggerstedt, Fred C. (Ethel), 8 Davison Lane, West Islip	661-7045	277
Ellison, Robert A., 66 Allen Street, New York City	*925-0275	747
Ernst, Robert S.C. (Dot), 321 Great River Road, Great River	277-4167	344
Fainer, Burt (Lillian), 17 Orlando Street, Massapequa	541-5028	389
Falik, Abe, 535 Fairway Drive, Woodmere	374-0673	1101
Farrell, Edward E. (Pete), 504 Avon Place, West Islip	669-4216	148
Feldman, Arthur R. (Marilyn), 960 Gardiner Drive, Bay Shore	666-5494	889

*Outside 516 Telephone Area

MEMBERS — South Bay Cruising Club — 1976 (Cont'd.)

Member, (Wife's Name), Address	Phone No.	Sail No.
Feldman, Martin H. (Dorothy), 340 Eastwood Road, Woodmere	374-9173	357
Ferenbach, Colin C. (Hannah), Point O' Woods	583-8919	12288
Feszchur, Ronald E. (Carole), 7 Piper Court, West Islip		3031
Fishman, Emanuel (Yetta), 2890 Bayview Avenue, Wantagh	826-4251	601
Fitzpatrick, Frank X. (Lois), Box 155, Yaphank Avenue, Brookhaven	286-0462	718
Fleming, Malcolm J. (Marion), 25 Academy Lane, Bellport		193
Flowers, Adolphus (Rose), 22 Matilda Court, Bayport		Power
Forman, Robert S., Jr., (Jacqueline), 33 Trask Lane, Babylon	587-3904	808
Forsyth, Eric B. (Edith), 2 Bond Lane, Brookhaven	286-9721	
Frederick, Cadman H. (Peep), 117 Handsome Avenue, Sayville	589-1218	368
French, Joe F. (Betty), 86 Wagstaff Lane, West Islip	587-2936	2700
Freudenthal, Hugo D., Dr. (Anita, Dr.), 13 Iroquois Place, Massapequa	798-2545	544
Friedman, Joseph H. (Eleanore), 2697 Walker Street, Bellmore	785-7195	740
Fring, Leo, Jr. (Lorraine), 3950 Taft Avenue, Seaford	785-6989	1737
Gardner, Donald W. (Elizabeth), 14 North Brewster Lane, Bellport	286-1396	239
Gauch, Frederick (June), 41 Connetquot Drive, Oakdale	589-1684	73
Gellman, Martin (Florence), 6 Legion Place, Malverne	593-9094	1999
Giffords, Gene (Sandy), 72 The Helm, East Islip		92
Glinick, Robert H., M.D. (Norma), 811 Main Street, Islip	581-3991	108
Glover, Herbert B., Jr. (Carol), 28 Kingsland Place, Babylon	669-8115	98
Glynn, James J. (Suzy), 48 Foster Lane, Babylon	587-4868	2890
Goldsmith, Michael T., 2 Consulate Drive, Apt. A1, Tuckahoe		714
Goldsmith, Morris (Judith), 25 Fairwater Avenue, Massapequa	541-1656	203
Goldsmith, Samuel L., Jr. (Bea), 3 Peter Cooper Road, New York City	*473-5298	268
Goldson, Howard (Gloria), 6 Woodview Drive, Nesconset	585-1720	233
Golfman, Arnold W., M.D. (Christina), 308 Woodland Drive Brightwaters	665-5462	2521
Goodale, James O. (Ruth), 281 Bayview Avenue, Massapequa	541-2774	164
Goodwin, Harold E. (Betty), 154 Greystone Road, Rockville Centre	764-7160	232
Gottwald, Heinz W. (Ruth), 175 Peninsula Drive, Babylon	587-4722	113
Gould, Jay V. (Joan), 97 Sequams Lane West, W. Islip	661-8762	721
Graham, Dick T. (Pat), 11 Haide Place, East Islip	581-5412	297
Greatsinger, Dayton H. (Helen), 41 Lake Drive South, West Islip	669-7115	143
Greenbaum, Murray L. (Lenore), 25 Sunset Boulevard, Massapequa	541-3492	1126
Greene, Steward (Iris), 1815 Heritage Way, Manhasset		3884
Griski, Vincent J. (Lois Ann), 2006 Debra Court, North Merrick	868-2014	731
Gross, Seymour G. (Sally Regina), 2990 Verity Lane, Baldwin		1020
Gschwind, Arthur V. (Inez), One Beech Road, Islip	277-1124	711
Gutman, Bernard (Dena), 106 Gillette Avenue, Patchogue	475-4493	365
Hack, Alfred G. (Jane), 31 Oak Neck Lane, West Islip	661-9359	16
Hack, Joseph, 260 East Shore Drive, Massapequa		62
Hamstra, J. Howard (Elizabeth), 1 Harbour Road, Babylon	669-1387	411
Hanaway, Thomas (Nan), 56 Kingsland Place, Babylon	669-4939	102
Hangarter, Theodore, M.D. (Judy), 300 Willets Lane, West Islip		723
Haynes, Edward E. (Joan), 23 Hampton Street, Sayville	589-6917	4242
Hayward, Charles F. (Betty), 27 Trask Lane, Babylon	661-3714	422
Heacock, James A. (Eleanor), 59 Neil Drive, Smithtown	724-0030	242
Heckel, Alfred H. (Joan), 183 West Islip Road, West Islip	661-5005	243
Heckel, Nancy (Miss), 403 Massapequa Avenue, Massapequa		68
Heess, Fred A., (Mary), 9 Harbour Road, Babylon	661-1185	282
Heller, Mortimer B., 66 Tardy Lane, Wantagh	221-2439	299
Henkel, E. Eugene, 57 Park Avenue, Bay Shore	666-6166	380
Hennessy, Thomas J., (Julia), 56 Ocean Avenue, Bay Shore	665-6382	

*Outside 516 Telephone Area

MEMBERS — South Bay Cruising Club — 1976 (Cont'd.)

Member, (Wife's Name), Address	Phone No.	Sail No.
Henry, Frank C. (Grace), 2686 Rocklyn Road, Shaker Heights, Ohio	*464-1178	1060
Henry, Thomas E. (Barbara), 40 Trask Lane, Babylon	669-0719	22
Herman, Irving H., 401 Broadway, New York City	*966-1936	466
Herman, Seymour J. (Bunny), 146 Island Parkway North, Island Park	431-2091	271
Herrforth, Carl (Charlotte), 10 Bunny Lane, Amityville	691-9412	353
Hesse, Burt L. (Mary Ellen), 31 Mahan Road, Old Bethpage	249-1032	700
Hilgendorff, Hugo A., Jr., 21 Boylan Lane, Blue Point	363-6367	3697
Hirsch, Bruce (Susan), 30-41 90th Street, Jackson Heights	*476-2443	790
Holler, Howard I. (Joan), 8529-102nd Street, Richmond Hill	*846-5167	707
Hollis, John M. (Rose), 53 Briarcliff Drive, Merrick	623-4766	468
Hollis, Robert L. (Betty), 142 Tahlulah Lane, West Islip	669-6749	180
Holmes, William E. (Joan), 198 Little East Neck Road South, Babylon	669-3773	444
Holsclaw, Donald V. (Mary Lou), Route 26, Climax, N.Y.		65
Holwell, F.S. (Joyce), 88 Purdy Lane, Amityville		23
Holzmacher, Robert G. (Ardith), 176 Peninsula Drive, Babylon		127
Horn, Frederick L. (Bobby), 461 Green Avenue, Sayville	589-2759	335
Horn, Herbert E. (Gae), 25 Nancy Drive, Sayville		134
Horowitz, Richard (Clare), 4 Randy Lane, Plainview	938-5302	1224
Hoston, James H. (Audrey), 129 Garden City Avenue, Wyandanch	643-9366	703
Howell, Rogers (Mary), 20 Dorset Lane, Babylon	669-3140	Power
Istel, John L. (Dorothy), 7410-35th Avenue, Jackson Heights	*426-2748	1128
Iurillo, Dolf (Mary Lee), 100 Wampum Lane, West Islip	587-2878	276
Jetzorreck, Dieter (Alice), 285 Poplar Street, Central Islip	581-0419	771
Johansen, Harold A. (Mary Anna), 355 Hunter Avenue, West Islip	669-7243	4817
Johnson, Edward L. (Blanche), 1 Glen Eagles Drive, Larchmont	*834-3356	981
Johnson, Edward S. (Betty), 256 Denton Avenue, Lynbrook	593-5767	208
Jones, Robert M. (Rita), 54 Edgewood Avenue, Oakdale	589-6882	761
Kachel, Walter G. (Sally), 36 Featherbed Lane, Oakdale	589-6328	306
Kahn, Hans R. (Lilli), 83-83 118th Street, Kew Gardens		288
Kaiser, Edmund A. (Grace), 160 Franklin Road, Oakdale	589-8474	219
Kaitz, Lawrence J. (Betty), 45 Atlas Avenue, Malverne	599-5074	163
Kallman, William E. (Mary Lou)		291
Yacht "Windhover", Knutsons Shipyard, Halesite	799-5835	4289
Kanser, Robert W. (Marilyn), 80 Waterview Avenue, Massapequa	868-5945	999
Kanter, Charles E. (Corinne), 25 West 4th Street, Freeport	277-4683	333
Kelly, Patricia (Miss), 41 Willow Avenue, Islip	669-2738	5021
Kenny, Harry W. (Judith), 17 Cambridge Drive, Babylon	598-0751	320
Kennedy, Bruce (Melissa), 35 West Lake Drive, Amityville	264-1040	87
Ketcham, Paul T. (Muriel), 62 New Point Place, Amityville	661-4070	822
Kind, Volker (Andrea), 17 Blanchard Street, W. Babylon		1530
King, Dave (Marie), 399 Green Avenue, Sayville	587-2899	96
Kleisler, Wilfred B. (Kathleen), 22 Cockonoe Avenue, Babylon	264-0846	Power
Klesick, August, 51 Barberry Court, Amityville	785-4839	2101
Knife, Dennis (Suzanne), 2946 Riverside Drive, Wantagh	481-2939	417
Koller, A. Stephen (Margaret), 45 Argyle Road, W. Hempstead	536-3213	99
Kondor, Kenneth A. (Lynn), 102 Jackson Avenue, Rockville Centre	887-1421	226
Konz, William T. (Eunice), 596 Broadway, Lynbrook	796-7826	757
Korhonen, Reino O. (Lillian), 33 Prentice Road, Levittown	669-7581	90
Kraker, John F. (Anita), 75 Strong Avenue, Babylon	781-6108	719
Kramer, Paul M.D. (Nikki), 3082 Riverside Drive, Wantagh		313
Kumpf, Rudolph (Irene), 1325 N. Windsor Avenue, Bay Shore		14867
LaBella, Richard J. (Diane), 282 Timberpoint Road, East Islip	277-4725	

*Outside 516 Telephone Area

MEMBERS — South Bay Cruising Club — 1976 (Cont'd.)

Member, (Wife's Name), Address	Phone No.	Sail No.
Labenow, Harvey (Gayle), 24 Kensington Road, Babylon	661-4183	777
Lampe, Norman W. (Marilyn), 35 Dollard Drive, N. Babylon	667-4672	361
Lampe, Richard A. (Gerda), 104 Lighthouse Road, Babylon	669-3568	104
Langley, Rev. Harold, 282 Long Beach Road, Island Park	432-0655	388
Larmor, J. Dever (Andrea), 79 Nassau Avenue, Islip	277-4397	
LaMorell, Frank O. (Marie), 1384 Pea Pond Road, North Bellmore	781-2194	336
Lawrence, Robert T. (Shirley), 39 Davison Lane East, West Islip	669-7789	70
Lawson, William, Jr. (Michele), 21 Roger Street, Hempstead		1332
Layton, Jack E. (Kathi), 156 Cross Road, Oakdale	589-9206	12693
Leggett, John A. (Ilona), 112 Peninsula Drive, Babylon	669-8832	913
Lehman, William R. (Louise), 25 Sprucewood Drive, Levittown		366
Locke, Clyde, R., M.D. (Adrienne), 38-04 28th Avenue, Long Island City	*278-3800	862
Logan, Ralph W. (Norma), 79 Tahlulah Lane, West Islip	661-5451	74
Lostritto, Michael W., 600 Center Briarwood Avenue, West Islip	669-9287	114
Luckner, Richard P., III (Helen), 36 Burnage Lane, Babylon	661-4901	139
Lund, Rev. Richard W. (Shirley), 64 Hamilton Street, Rockville Centre	678-5396	530
Lynn, Robert W. (Marylou), 103 Atlantic Avenue, West Sayville	589-5943	720
MacGill, Bruce E. (Ethel), 39 Stuart Avenue, Amityville	598-1050	300
Mackston, Jack (Sandra), 90 Curley Street, Long Beach		82
Madigan, Thomas B. (Elizabeth), 68 Shirley Court, Commack	543-4465	259
Magidson, Herb (Barbara), 90 Cleveland Avenue, Rockville Centre	764-5054	224
Magovern, John J. (Rose), 26 Chestnut Street, Garden City	741-2052	244
Mason, Russell K. (Barbara), 124 Cockonoe Drive, Babylon		651
Max, Boyd C. (Dottie), 11 Clearwater Avenue, Massapequa	541-4860	1
McClone, Thomas A., Jr. (Christine), 74 Sequams Lane West, W. Islip	669-5769	930
McClure, Dean (Joan), 30 Bethune Street, New York City	*989-1098	118
McGeary, Austin J. (Bobbie), 240 Middle Road, Blue Point	363-6985	205
McGeehan, John R. (Marilyn), 144 Sequams Lane East, W. Islip	669-6335	Power
McKeen, Joseph (Susan), 16 South Street, Sayville	567-0519	739
McKenney, Arnold G. (Lillian), 40 Wyandanch Avenue, East Islip	581-5481	715
McInerney, John J., P.O. Box 717M, Bay Shore	589-1454	281
McPherson, David L. (Gracie), 19 Montrose Avenue, Babylon	587-2085	116
McTeague, Hugh T. (Mabel), 44 Hemlock Lane, Bay Shore	665-1894	717
Menger, William M. (Beryl), 416 Fire Island Avenue, Babylon	587-4930	298
Metcalf, David M. (Audrey), Friendship Road, RFD 3, Waldoboro, ME	*832-7649	189
Mignerey, Charles A. (Helen), 38 Gladstone Avenue, West Islip	669-8142	452
Miles, Francis T., 4 Shore Road, Bellport	286-3735	128
Miller, Edward E. (Jacquelyn), 27 Little East Neck Road S., Babylon	661-4862	665
Miller, Glenn, 65 North Boulevard, East Rockaway	599-5693	Power
Milligan, William F. (Pricilla), 479 Smith Avenue, Islip	581-8544	1886
Mills, Donald L. (Gen), 33 Roger Street, Hempstead	486-0498	10521
Moldestad, Gus A. (Helen), 98 Wagstaff Lane, West Islip	587-9518	221
Moore, John R. (Midge), 140 Cadman Avenue, Babylon	669-9016	548
Morris, John H. (Marian), 48 South Montgomery Avenue, Bay Shore	666-4023	2001
Muchmore, Wayne, (Jane), 155 Sequams Lane East, W. Islip	587-9878	888
Munroe, Donald B. (Eleanor), 101 Castleton Avenue, Staten Island	*447-6092	569
Murray, Earl W., Jr. (Trudy), Box 205, Great River	277-3928	2484
Neale, Edmund, Sr. (Winnie), 1384 East Fork Road, Bay Shore		Power
Neale, Edmund J., Jr. (Janet), 42 Indianhead Drive, Sayville	589-3940	421
Nehring, Richard C. (Jinie), 163 Clocks Boulevard, Massapequa	795-4154	668
Norwalk, Harry R. (Ruth), 18 Tulip Lane, Levittown	735-1097	20261
Novak, Robert (Cathy), 118 South Bay Avenue, Brightwaters	666-4087	20233

*Outside 516 Telephone Area

MEMBERS — South Bay Cruising Club — 1976 (Cont'd.)

Member, (Wife's Name), Address	Phone No.	Sail No.
O'Brien, Joseph R., 666 Shore Road, Long Beach	431-2362	797
Orr, Louis H., Jr. (Libby), 157 Sequams Lane, West Islip	669-2841	983
Owens, Robert G. (Barbara), 2 Gamecock Lane, Babylon	587-5066	119
Pallas, Frederick (Adele), 60 Everett Street, Patchogue	475-3365	75
Palmaro, John, 175 South Broadway, Lindenhurst	226-3983	370
Pares, James W. (Eileen), 1510 Jericho Turnpike, New Hyde Park	628-1445	523
Parker, Rev. Richard S. (Grace), 60 Harvard Avenue, Rockville Centre	766-5452	77
Pasch, Robert (Fran), 42 Dundee Avenue, Babylon	669-7882	46
Paterson, Charlotte, 165 Annuskemunnica Road, Babylon	669-5285	Power
Pawlitschek, Ernst W. (Chlotilde), 735 Suffolk Avenue, Brentwood	273-9090	290
Pearson, Alex (Ann), 6 Flower Hill Lane, Bay Shore	665-0908	78
Peck, Eugene W. (Eleanor), 57 Prospect Street, Babylon		Power
Penny, Stanley G. (Catherine), 155 South Ocean Avenue, Bayport	472-0559	798
Perry, Jack R. (Joan), 78 Gillette Avenue, Sayville	589-7199	215
Peterson, Ronald B. (Jean), 344 Seville Blvd., Sayville	567-9436	1320
Petroske, Edward (Joan), 34 Dartmouth Drive, Deer Park	586-9509	1776
Phipps, Chester (Grace), 3996 Porpoise Drive SE, St. Petersburg, Fla.	*	11238
Pinks, Steven G. (Jean), 7 Conscience Bay Road, Setauket	751-7109	191
Pless, John A. (Helene), St. Mark's Lane, Islip	277-3216	110
Polk, Irving (Natalie), 236 Jayne Avenue, Patchogue	475-8971	184
Portnoy, Melvin, DR. (Joan), 1 Brandywine Drive, Setauket	751-8760	416
Post, Henry A.V. (Marguerite), 44 Davison Lane East, West Islip	669-5655	322
Prendergast, William A. (Virginia), 190 East Shore Drive, Massapequa	798-1645	750
Radeka, Veljko (Lela), 29 Academy Lane, Bellport	286-0854	571
Rague, Sanford (Joan), 21 Deering Wood Lane, Babylon	669-3764	802
Ramsdell, Roger G. (Isabelle), 28 Walnut Avenue, Rockville Centre	766-2294	152
Raskin, Edward S. (Rochelle), 4 Norgate Drive, Sayville	567-0571	710
Reardon, Eugene M., 31 West Lane, Bay Shore	665-1277	11937
Reed, Richard L. (Claire), 6 Deering Wood Lane, Babylon		471
Regan, John J. (Peggy), 3 Chase Lane, Sayville	567-1549	155
Reid, Ralph A., 245 Montauk Highway, West Sayville	567-6779	369
Reilly, James C. (Ethel), 92 Johnson Avenue, Sayville	589-2358	266
Reilley, John (Barbara), 5 Harwick Lane, Stony Brook	751-4946	460
Reimer, Richard R. (Doris), 3 Ida Lane, North Babylon	667-4216	403
Rein, Mark (Frances), 378 West End Avenue, New York City		211
Reinhard, Albert (Sue), 2 East Bayview Avenue, Massapequa	799-3066	901
Reiser, Paul H. (Marie), 77 Stillwater Avenue, Massapequa	798-9564	105
Remington, Edgar F. (Shirley), Box AL, Stony Brook	751-2124	14404
Rhodes, Peter (Helen), 6 Christopher Court, Babylon	587-5088	83
Ricketts, Edward M. (Grace), 256 Sequams Lane Ctr., West Islip		76
Rieger, John R. (Dore), 138 Anchorage Drive, West Islip		2823
Rising, Albert E., Jr. (Niel), 103 West Concourse, Brightwaters	665-6712	182
Robb, Jack (Virginia), 522 DeWitt Avenue, Babylon	586-1015	2191
Roberts, William J. (Winifred), 78 Wagstaff Lane, West Islip		391
Rohde, Warren (G.G.), 24 Livingston Road, Bellport	286-0927	231
Rosenberg, Bud (Harriet), 34 Secatogue Lane East, West Islip	661-4727	156
Rosensweig, Paul S. (Sara), 11 Cow Path, Brookville	626-3299	4516
Ross, John S. (Dorothy), 37 Burton Lane, Massapequa	798-6554	209
Rottkamp, Bill (Ellen), 768 Silver Lake Place, Baldwin	623-6229	1699
Ruger, Albert M. (Elise), 48 Harmony Drive, Massapequa Park	541-3305	229
Ryan, Jack R. (Peggy), 2 High Noon Road, Weston, Connecticut	*226-9757	111
Sabbeth, Edgar (Ann), Burns Avenue and Old Mill Road, Wantagh	221-1121	2913

*Outside 516 Telephone Area

MEMBERS — South Bay Cruising Club — 1976 (Cont'd.)

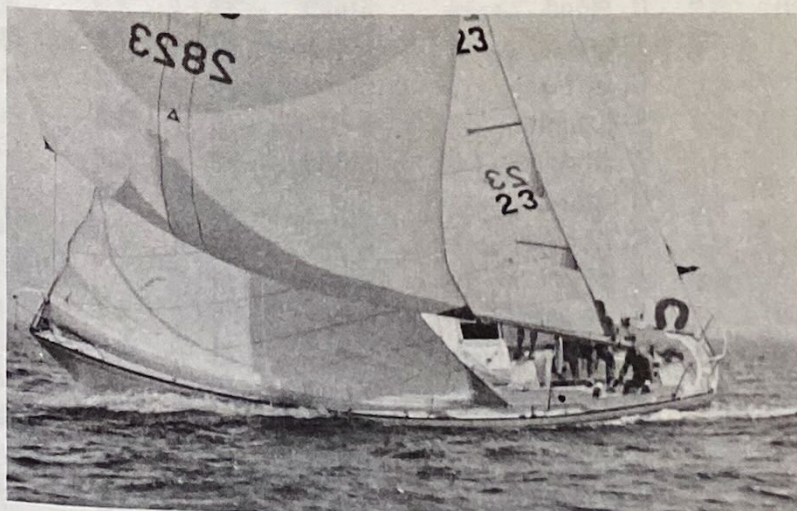
Member, (Wife's Name), Address	Phone No.	Sail No.
Saccio, Archie F. (Lilyan), 141 Wampum Lane, West Islip	669-5501	10988
Saccio, Philip W., 141 Wampum Lane, West Islip		
Sagarese, Charles (Concetta), 1 Mast Lane, West Islip	587-8675	382
Sailor, Vance L. (Marguerite), 100 Durkee Lane, East Patchogue	475-9294	153
Saltzman, Elliot (Natalie), 95 Reid Avenue, Port Washington		2540
Salvante, Daniel T. (Mary), 824 West Bay Drive, West Islip	661-6685	4450
Sands, Frederick W., Jr. (Jeanne), 9090 Line Bay Blvd., Tamarac, Fla.	*722-1667	
Savoca, Paul, (Gina), 66 The Helm, East Islip	277-0805	121
Saxe, John R. (Kathleen), 16 Elder Road, Islip	581-1291	4744
Schafer, Andrew P. (Gisela), 3167 Oceanside Road, Oceanside	536-4194	218
Schafer, Robert (Nonette), 172 West Islip Road, W. Islip	669-6751	64
Schapiro, Robert D. (Sue), 11 Coppertree Lane, Babylon	661-3948	712
Schecker, Edward, J. (Beatrice), 606 Higbie Lane, West Islip	587-4645	371
Schmal, Wolfgang G. (Herta), 21 Harbor Court, Copiague	842-9354	20126
Schneider, Albert (Terry), 226 Tyrconnell Avenue, Massapequa Park	798-8167	396
Schneider, Fred (Frances), 218 Mosher Avenue, Woodmere		Power
Schneider, Joseph B. (Lorraine), 3516 Surele Road, Wantagh	221-5891	558
Schultz, Robert D. (Vi), 1 Eastgate Drive, Sayville		1223
Schwartz, Julian (Marion), 108 The Helm, East Islip	665-7071	4358
Seaman, Gordon L. (Tedde), 71 Willow Avenue, Islip	581-8790	197
Seidenberg, Everett (Teddy), 61 South Carll Avenue, Babylon	669-4930	Power
Seidenspinner, Ralph (Pat), 1935 Iowa Avenue, N.E., St. Petersburg, Fla.	*522-0723	1271
Selvin, Martin (Bonnie), 26 Viking Drive, West Islip	587-3703	4495
Sheppard, Robert J. (Carole), 167 Paulanna Avenue, Bayport	472-0099	1471
Sherwood, Richard B. (Dianne), 99 Ballpark Lane, Hicksville	681-7595	443
Shoemaker, Kensel (Beverly), 1708 W. Las Olas Blvd., Ft. Lauderdale, Fla.		
Shreve, Eugene S. (Sue), 4 Argyle Drive, East Islip	581-3719	4402
Silbert, Mitchell, Dr. (Shirley), 16 Highwater Avenue, Massapequa	798-0119	2020
Simonson, William H. (Liz) 122 Wagstaff Lane, West Islip		71
Smith, Edward S., Dr. (Kitty), 229 Snedecor Avenue, Bayport	589-1336	332
Smith, Hale (Claire), 6 Alden Road, East Rockaway	593-4427	346
Smith, Harold (Linda), 9 Ray Court, Melville	643-6979	568
Smith, Hervey G. (Elsie), 76 Hampton Street, Sayville		
Smith, Merritt (Janet), 169 Sequams Lane Center, West Islip	661-2786	
Smith, Robert O. (Mary), 119 Lagoon Boulevard, Massapequa	798-3395	2156
Smith, Soren T. (Eleanor), 848 East Bay Drive, West Islip	669-3143	93
Snyder, Robert (Laura), 190 West Islip Road, West Islip	587-7740	161
Spark, Derek H., M.D. (Kay), 224 Beverly Road, Scarsdale	*723-9259	775
Spatenga, Hugo (Patricia), 50 Sunset Drive, Sayville	589-6863	1184
Spivack, Boris M. (Lois), 84 Handsome Avenue, Sayville	589-3629	442
Sprole, J. Stephen (Kathy), 264 S. Bayview Avenue, Amityville	598-1420	13629
Stearns, Clyde E. (Mildred), 25 Durkee Lane, East Patchogue	475-0841	124
Steinhard, Walter (Evelyn), 155 Freemont Street, Peekskill, N.Y.		
Stephani, Dmitri (Helen), 174 Sears Road, West Islip	669-9202	430
Stephens, Richard (Barbara), 80 Vanderbilt Boulevard, Oakdale	589-5826	318
Stoye, Carl B. (Grace), The Cove, Box 726, Bayport	472-1299	726
Streit, Donald D. (Phyllis), 49 Brown's Lane, Bellport		67
Stuhler, Robert E. (June), 22 Brightwater Place, Masepequa	799-4457	Power
Symons, William (Ricki), 312 South Clock Boulevard, Amityville	264-6330	174
Tarantino, John (Helen), 179 Kingston Boulevard, Island Park	432-8933	112
Tauby, William (Lynn), 12 P.O. Lane, Hicksville	935-1672	427
Taussig, Fred F. (Julie), 35 Jones Road, Englewood, N.J.	*568-2080	2790

*Outside 516 Telephone Area

MEMBERS — South Bay Cruising Club — 1976 (Cont'd.)

Member, (Wife's Name), Address	Phone No.	Sail No.
Teta, W. Michael (Virginia), 414 Deer Park Avenue, Babylon	587-3450	303
Thayer, M. Whiting (Joyce), 229 Sequams Lane Center, West Islip	669-6765	45
Thomas, William E. (Nancy), 75 Stillwater Avenue, Massapequa	798-2349	Power
Thomson, Robert Cooper (Marcia), 68 Norman Avenue, Amityville	264-0753	154
Tilden, Henry G. (Ruth), 114 Peninsula Drive, Babylon		19
Titterington, J. (Ann), 35 W. Suffolk Avenue, Central Islip	234-1715	3663
Underhill, Thomas (Katie), 14 White Birch Drive, Babylon		Power
Van Nostrand, Roy (Peggy), 66 E. Lake Drive, Amityville	691-6151	120
Wainwright, Philip B. (Lydia), 6 Braham Avenue, Amityville	264-2571	2627
Wall, Einar F. (Margaret), 37 Bayview Lane, Amityville	264-5528	138
Walsh, George F. (Joyce), 35 Tide Court, Oakdale	567-1288	123
Watts, Arnold R. (Joan), Box 233, Shoreham	744-5926	704
Webb, Robert G. (Dorothy), 63 Wingra Avenue, Rutherford, N.J.	*939-0835	183
Wendt, Robert L. (Ruth), 1 Hillcrest Lane, Woodbury	692-6998	170
Westhoff, Kelly (Pru), 495 Lakeview Avenue, Bayport	472-2431	4882
Whisenhunt, Gene L. (Jeannie) 2728 Inverness Court, LaJolla, Calif.		
Wieda, Alfred (Florence), 186 Clock Boulevard, Massapequa	691-6146	331
Wiedersum, Frederic G. (Fairfax), 24 Garner Lane, Bay Shore	665-8982	3813
Wile, Fred D. (Lucille), 536 West 111 St., Apt. 75, New York City		115
Wills, Richard (Anna Mae), 24 Smith Street, Babylon		Power
Wimmerstedt, Edward A. (Dorothy), 1359 Chicago Avenue, Bay Shore	666-0172	
Wirth, John A., 316 South Bayview Avenue, Amityville		195
Wissman, Robert (Charlotte), 601 Bergen Avenue, Babylon	669-3990	66
Wood, David, Jr. (Pat), 26 Secatogue Lane East, West Islip	661-4400	89
Woodhull, Richard M. (Virginia), 241 Durkee Lane, East Patchogue	475-3930	241
Woodward, John D. (Nona), 7 Neptune Place, Massapequa	541-2922	666
Wrage, George E. (Dorothy), 29 Braham Avenue, Amityville	691-8506	1109
Wragge, John B. (Caroline), 27 Bayview Lane, Amityville	264-0111	35
Yaxis, Alexander G. (Vi), 29 Hamilton Street, Amityville	264-2153	125
Yerden, Gilbert (Ellen), 173 Roxbury Road, Garden City	747-6327	384
Young, John F. (Jenni), 106 West Islip Road, West Islip	669-1181	1090
Zangle, Francis W. (Annette), 14 Deeringwood Lane, Babylon	587-3789	213
Zeisler, Richard M. (Joan), 4083 Greentree Drive, Oceanside	764-1489	398
Zimmer, Donald J. (Laurette), 3470 Homestead Avenue, Wantagh	785-5246	222
Zimmerman, Frederick F. (Barbara), 33 Eaton Lane, West Islip	669-4547	10

*Outside 516 Telephone Area



SOUTH BAY CRUISING CLUB FLEET — SAILING AUXILIARIES

No.	Yacht	Owner	Rig	LOA	Draft	Model
1	Climax	B. Max	Sloop	38	3.8	Morgan
10	Teezim Too	F. Zimmerman	Ketch	32	3.5	Dickerson
12	Filibuster	W. Brayshaw	Sloop	30	3.5	Morgan
16	Periwinkle	J. Hack	Sloop	36		P-36
19	Whistler	H. Tilden	Sloop	36	4.2	Whistler
21	Chico	F. Braddon	Sloop	26	2.8	Crosby Cat
22	Ishtar	F. Becker & T. Henry	Cat	18	1.6	Sanderling
23	Manana II	F. Holwell	Sloop	22		Delorie
35	Sea Jay	J. Wragge	Sloop	27	3.4	Tartan
45	Skylark	W. Thayer	Ketch	40	3.0	Motor Sailor
46	Sparkling Waters	R. Pasch	Sloop	30	3.5	Morgan
51	Judylin II	R. Brown	Sloop	26	3.8	Commander
52	Halcyon	R. Davis	Sloop	21		Mallard
53	Lady Lou V	J. Beinert	Cat	22	2.5	Sweisguth
60	Venture	C. Bernichon	Sloop	34	3.8	Seafarer
62	Slim	H. Hamstra	Sloop	27	3.4	Tartan
63	Arabesque	W. Brady	Ketch	42	2.7	Simplissima
64	Decatur	R. Schafer	Sloop	30	3.5	Morgan
65	North Star	D. Holsclaw	Sloop	28		Viking
66	Summerwind	R. Wissman	Sloop	34	3.3	Morgan
67	Wooden World II	D. Streit	Ketch	36		Sea Dawn
68	Memory	F. Heess	Sloop	33	3.7	Swiftsure
70	Lorelei	R. Lawrence	Sloop	28	4.0	Triton
71	Broadbill	W. Simonson	Sloop	30	3.6	Wanderer
73	Antigua	F. Gauch	Ketch	33	3.0	H. G. Smith
74	Ghost	R. Logan	Sloop	36	3.6	Creekmore
75	Athena	F. Pallas	Sloop	27	2.7	Irwin
76	Spirit	E. Ricketts	Sloop	38	3.8	Morgan
77	Charisma	R. Parker	Sloop	24	3.4	Corsair
78	Buccaneer	A. Pearson	Sloop	35	4.8	Morgan
82		J. Mackston	Sloop	23		Viking
83	Winds Rush	P. Rhodes	Yawl	34	3.0	H.G. Smith
87	Betty	P. Ketcham	Sloop	18		P. Ketcham
89	Patty Wagon	D. Wood	Sloop	31	3.3	Irwin
90	Doppalong	J. Kraker	Sloop	28	2.7	Menemsha 24
92	Illusion	G. Giffords	Sloop	30	1.6	Iroquois, Catam.
93	Nancily	S. T. Smith	Cutter	25	3.8	Permaglass
96	Valhalla	W. Kleisler	Sloop	29	4.0	Valkyrie
98	Cirrus	H. Glover	Cat	22	1.4	Prestige
99	Lady Lynn	K. Kondor	Sloop	30	3.6	Wanderer
102	Jeanie	T. Hangarter	Sloop	27		Hunter
104	Blue Norther	R. Lampe	Yawl	35	3.7	Bristol
105	Glass Slipper	P. Reiser	Sloop	24	2.3	Tylercraft
106	Charron's Ferry	R. Z. Brown	Ketch	38		Colvin
107	Horizon	F. Atwood	Ketch	45		Motor Sailor
108	Reliance	R. Glinick	Ketch	37	3.9	Irwin
110	Hollandia	J. A. Pless	Yawl	32	3.9	Irwin

**SOUTH BAY CRUISING CLUB FLEET —
SAILING AUXILIARIES (Cont'd.)**

No.	Yacht	Owner	Rig	LOA	Draft	Model
111	Polly Bee	J. Ryan	Ketch	34	2.7	Simplissima
112	Ebb Tide	J. Tarantino	Sloop	22	2.0	Herman
113	Ruth II	H. Gottwald	Ketch	35	3.0	Dickerson
114	High Barbaree	M. Lostritto	Schooner	32	2.5	Brewer
115	Idlewile	F. Wile	Sloop	25	2.3	Amphibicon
116	Staryker	D. McPherson	Sloop	26	2.4	Polaris
118	Magic	D. McClure	Schooner	36		Chapelle-Colvin
119	Pooka	R. Owens	Sloop	27	3.4	Tartan
120	Lorna Doone	R. VanNostrand	Sloop	33	3.0	S & S
121	Anache II	P. Savoca	Sloop	26	1.8	Balboa
123	Ark	G. Walsh	Sloop	30	4.0	Valkyrie
124	Shearwater	C. Stearns	Sloop	28	3.0	Irwin
125	Vi	A. Yaxis	Ketch	28	3.5	H-28
127	Wanderlust	R. Holzmacher	Sloop	23	2.3	Olympic
128	Fledermaus	F. Miles	Sloop	26		Polaris
133	Chantey	M. Barton	Yawl	33	3.0	Tavana
134	Windjammer	H. Horn	Ketch	28		
138	Alma K	E. Wall	Sloop	22	2.3	Westerly Nomad
139	Sea Cloud	R. Luckner	Ketch	35	2.5	Skip Jack
141	Marshmallow World	T. Bolger	Ketch	30	4.2	Seawind
142	Nor'Easter	R. Boyd	Yawl	34		Charles Mower
143	Seadawn	D. Greatsinger	Ketch	36	3.0	Seadawn
144	Civet I	J. Anisko	Cat	18		America
145	Flighty Miss	H. Colleran	Sloop	39	4.8	Pearson
146	Joy Sea	M. Brass	Sloop	27	2.7	Irwin
148	Valkyrie	E. Farrell	Sloop	30	4.0	Valkyrie
152	Puritan	R. Ramsdell	Ketch	30	3.6	Privateer
153	Jan Maat	V. Sailor	Sloop	30	5.0	Dutch Maid
154	Sea Hawk	R. Thomson	Sloop	35	3.8	Pearson
155	Pony Tail	J. Regan	Sloop	24	2.0	Venture
156	Orca	B. Rosenberg	Sloop	36	4.1	Alden Zephyr
161	Dovekie	R. Snyder	Sloop	24	3.5	Bristol
162	Lorien	E. Buyer	Sloop	34	3.3	Morgan
163	Pisces	L. Kaitz	Sloop	30	3.6	Pearson 300
164	Tammy Norie	J. Goodale	Sloop	23	2.3	Seafarer
170	Awiki II	R. Wendt	Sloop	28	2.9	Soverel
174	Deliana	W. Symons	Sloop	30	1.5	Iroquois Mk II
176	Resistance	R. Dunlop	Sloop	30	3.6	Wanderer
180	B & B	R. Hollis	Sloop	26	3.0	Snapdragon
182	Vela II	A. Rising	Sloop	30	3.6	Wanderer
183	Release	R. Webb	Sloop	31	3.3	Corvette
184	Sea Chantey	I. Polk	Sloop	28	2.9	Soverel
186	Dial	W. Dreher	Sloop	22	3.4	Pearson
189	Chippendale	D. Metcalf	Sloop	22	2.0	Herman 20
190	Aequanimitas	J. Canning	Sloop	30	3.6	Pearson 300
191	Butterfly	S. Pinks	Sloop	33	4.0	Pearson
192	Strega	P. D'Agrosa	Ketch	28	3.5	H-28

**SOUTH BAY CRUISING CLUB FLEET —
SAILING AUXILIARIES (Cont'd.)**

No.	Yacht	Owner	Rig	LOA	Draft	Model
193	Osprey	M. Fleming	Ketch	35	4.0	Dickerson
195		J. A. Wirth	Sloop	26	2.4	Polaris
196	Spoondrift	W. Batty	Sloop	37		Friendship
197	Starshine	G. Seaman	Sloop	30	3.6	Wanderer
199	Kismet	J. Berdolt	Sloop	38	3.8	Morgan
203	Barcarolle	M. Goldsmith	Sloop	41	4.2	Morgan
204	White Cloud	Cahill	Sloop	28	3.0	Morgan
205	Maia	A. McGeary	Sloop	25	2.7	Irwin
207	Valkyrie	L. Cyr	Sloop	30	4.0	Valkyrie
208	Easy Jigs	E. Johnson	Sloop	27	3.4	Tartan
209	Snuggle Bug II	J. Ross	Sloop	28	3.0	Irwin
211	Bones Apart II	M. Rein	Sloop	28	3.0	Morgan
213	Bezan	F. Zangle	Sloop	26	2.3	Polaris
215	Liebchen	J. Perry	Sloop	30	4.0	Valkyrie
217	Ruddy Duck	R. S. Davison	Schooner	32	2.8	Herman Lazy Jack
218	Gisela R.	A. P. Schafer	Sloop	25	4.3	Friendship Sloop
219	Red Baron	E. Kaiser	Sloop	30	4.0	Easterly
220	Merry Ann	W. Cook	Sloop	30	4.0	C & C
221	Tally Ho!	G. Moldestad	Sloop	29	4.0	Triton Mark IV
222	Utopia	D. Zimmer	Sloop	34	3.3	Morgan
224	Quintet	H. Magidson	Sloop	25	3.5	Corsair
226	Southwind	W. Konz	Sloop	34	3.3	Morgan
229	Happy Ours	A. Ruger	Sloop	25		Erickson
231	Misty	W. Rohde	Sloop	25	2.5	Bayfield 23
232	Good Wind	H. Goodwin	Sloop	31	3.1	Columbia
233	Shalom Rav	H. Goldson	Sloop	30	1.6	Iroquois Catam.
234	Reverie	W. Cummins	Yawl	38	4.0	Alden Challenger
236	Here I Am	C. Abrams	Sloop	22	3.0	Electra
238	Butterfly	J. Alberi	Sloop	24	2.8	Dolphin
239	Menehune	D. Gardner	Sloop	24	2.8	Dolphin
240	Norma	H. Camp	Sloop	30	3.5	Morgan
241	Nancee II	R. Woodhull	Sloop	31	3.3	Irwin
242	Falcon	A. Heckel	Sloop	30	3.6	Wanderer
243	Happiness Is	N. Heckel	Sloop	22	2.3	Sailmaster
244	Miramar	J. Magovern	Sloop	27	3.4	Tartan
256	Hephzibah	O. Davison	Schooner	32	2.8	Herman Lazy Jack
259	Liz	T. Madigan	Sloop	23		True Rocket
260	Katherine	E. A. Brooks	Sloop	31	3.5	Corvette
263	Rehbock	J. H. Bogan	Sloop	25	2.3	O'Day
266	Queen E	J. C. Reilly	Sloop	31	3.3	Corvette
268	Teal	S. Goldsmith	Cat	22		Dexter
271	Panacea	S. Herman	Sloop	28	3.0	Soverel
276	Venus	D. Iurillo	Sloop	33	3.6	Swiftsure
277	Sumaka IV	F. Eggerstedt	Sloop	27	3.4	Tartan
279	Windsong	A. Bertapelle	Sloop	30	3.5	Creekmore
281	Ellen	J. McInerney	Sloop	31	3.3	Corvette
282	Batyam	M. Heller	Sloop	26	2.8	Sailstar Courier

**SOUTH BAY CRUISING CLUB FLEET —
SAILING AUXILIARIES (Cont'd.)**

No.	Yacht	Owner	Rig	LOA	Draft	Model
283	Beedeebee	R. Baum	Sloop	22		Tanzer
287	Ichi Ban	J. Boyajian	Sloop	30	3.6	Wanderer
288	Scrimshaw	H. Kahn	Sloop	25	2.5	Wianno Sr.
290	See Lust	E. Pawlitschek	Sloop	27		Irwin
291	Windhover	W. Kallman	Sloop	28	3.0	Morgan
292	Feather	T. E. Dauch, Jr.	Sloop	24	3.4	Corsair
295	Psyche IV	J. Chasas	Sloop	38	3.8	Morgan
297	Lady Bug	R. Graham	Sloop	30	3.6	Wanderer
298	Miss Betty	W. Menger	Sloop	27	3.4	Tartan
299	Sea Fever	E. Henkel	Sloop	30	3.5	Morgan
300	Merri Mac	B. MacGill	Sloop	24	3.4	Corsair
303	Fury	W. M. Teta	Sloop	23	3.5	Rocket
306	Scotch 'N Water	W. Kachel	Sloop	27	2.7	Irwin
310	Maeva	H. Borntraeger	Sloop	28	3.0	Morgan
313	Wanderlust III	R. Kumpf	Sloop	26		Cross Trima.
314	Sagwa	D. Bernard	Sloop	31	3.3	Corvette
316	Dovekie	I. Cleaves	Cat	22	2.5	Americat
318	Windquest	R. Stephens	Sloop	34	3.3	Morgan
320	'Glas Menagerie	B. Kennedy	Sloop	31	3.3	Corvette
322	Leprechaun	H. Post	Sloop	28	4.0	Triton
325	Moonraker II	P. H. Batty	Sloop	32	4.0	Bristol
328	Tara	E. Clarke	Sloop	24		Hurley
331	Sea Sprite	A. Wieda	Sloop	32		Motor Sailor
332	Kitty Kat	E. S. Smith	Cat	18	1.6	Sanderling
333	Banshee	P. Kelly	Sloop	24	3.0	Greenwich
335	Colleen	F. Horn	Sloop	27	2.7	Irwin
336	Bacchanal	F. LaMorell	Sloop	23	2.0	O'Day
344	Sea Wench	R. Ernst	Ketch	31	3.8	Mariner
345	Therapy	B. L. Cohn	Sloop	27	4.0	Catalina
346	Sunriser	H. Smith	Sloop	22.5	2.0	Tanzer
347	Onda	J. Crowe	Sloop	27	3.4	Tartan
348	Charisma	J. Ardito	Sloop	34	3.8	Seafarer
353	Curlew	C. Herrforth	Sloop	23	3.8	O'Day
354	Trade Winds	P. Curry	Ketch	30		Crosby
357	Joed II	M. Feldman	Sloop	23	2.3	Kestrel
361	Lynoro	N. Lampe	Sloop	24	2.0	Tylcraft
362	Caljen	T. Alderson	Sloop	22		Gulf Coast
365	Eventide	A. Hack	Yawl	33		Seafarer
366	India Lou	W. Lehman	Sloop	26	3.0	Grampian
368	Phragmite	C. Frederick	Cat	18	1.6	Sanderling
369	Finale	R. Reid	Sloop	30	3.3	Grampian
370	Allegro II	J. Palmaro	Sloop	37	5.8	Knutson
371	Horizons	E. Schecker	Yawl	35	3.9	Bristol
380	Andromeda	T. Hennessy	Sloop	23	3.3	Marlin
382	Pegasus	C. Segarese	Sloop	30		Holiday
383	Xanadu	P. Colombo	Sloop	34		Seafarer
384	Encore	G. Yerden	Sloop	24	3.4	Sailstar

**SOUTH BAY CRUISING CLUB FLEET —
SAILING AUXILIARIES (Cont'd.)**

No.	Yacht	Owner	Rig	LOA	Draft	Model
388	Quadrant	H. Langley	Sloop	22	2.0	Herman 20
389	American Pie	B. Fainer	Sloop	32	3.9	Irwin
391	Madcap III	W. J. Roberts	Sloop	23		Pageant
396	Terryfier	A. Schneider	Sloop	34	3.9	Tartan
398	Sans Souci	R. Zeisler	Sloop	35		Bristol
403	Winsom	R. Reimer	Sloop	28	3.0	Irwin
411	Siesta	T. Hanaway	Sloop	28	4.0	Rhodes Ranger
416	Troubadour	M. Portnoy	Sloop	38	3.9	Morgan
417	Sark	A. Koller	Ketch	35	4.0	Dickerson
421	Godspeed II	E. Neale, Jr.	Sloop	27	3.4	Tartan
422	Jimel	J. Heacock	Sloop	24	2.8	Yankee Dolphin
423	Sea Dream	W. Dunleavy	Sloop	22	1.8	Morgan
424	Willopeg	W. Ciocys	Sloop	25	2.5	Redline
427	Mirage	W. Tauby	Sloop	20	2.8	Corinthian
430	Lena	D. Stephani	Sloop	27	3.4	Tartan
433	LaPaix II	D. Boyd	Ketch	33	3.7	Cheoy Lee
435	Tradition	J. Brown	Sloop	23	2.9	Aquarius
442	Wilde Thyme	B. Spivack	Sloop	27	3.4	Tartan
443	Whisper	R. Sherwood	Sloop	23		O'Day
444	Amen	W. Holmes	Sloop	23	2.3	Seafarer
452	Sea Gypsy	C. Mignerey	Ketch	36	4.5	Allied Princess
460	Damsel	J. Reilly	Sloop	25	3.3	Meridian
466	Shelley	I. Herman	Sloop	28	4.0	Triton
468	Jolly Jack	J. Hollis	Sloop	26	3.0	Snapdragon
471	Bellwether	R. Reed	Sloop	30	3.6	Wanderer
523	Colombina	J. Pares	Sloop	26		Sailstar
524	Lady Lee	W. Cosgrove	Sloop	29.9	3.5	Grampian
530	Spindrift	R. Lund	Sloop	26		Essex
532	Heather	A. Davies	Sloop	27	3.4	Tartan
544	Venus	H. Freudenthal	Sloop	26	1.6	Clipper
548	Starward	J. Moore	Yawl	40	4.3	Block Is.
555	Renarde	W. M. Aubin	Sloop	33	3.6	Swiftsure
558	Gone With The Wind	J. Schneider	Sloop	22	3.5	Sailstar
568	Stanpey	H. Smith	Sloop	30	3.6	Wanderer
569	Witch	D. Munroe	Ketch	31	4.6	Seafarer
571	Bora	V. Radeka	Sloop	22	2.3	Kestrel
601	Bay Song	E. Fishman	Sloop	23		O'Day
651	Quest	R. Mason	Sloop	21		Barrett
665	Bandersnatch	E. Miller	Sloop	28	4.0	Triton
666	Dulcinea	J. Woodward	Sloop	30	3.6	Wanderer
668	Sanderling	R. Nehring	Sloop	33	3.6	Swiftsure
700	Winky	B. Hesse	Sloop	20		
701	Dotty Ann	R. Benedict	Sloop	26	3.0	Grampian
702	Figures 111	W. Ceilly	Cutter	31		Sumnercraft
703	NIT	J. Hoston	Sloop	25	3.9	Hunter
704	Diana	A. Watts	Sloop	24		Viking 23
707	Misty	H. Holler	Sloop	33		Morgan

**SOUTH BAY CRUISING CLUB FLEET —
SAILING AUXILIARIES (Cont'd.)**

No.	Yacht	Owner	Rig	LOA	Draft	Model
708	Kalaki	R. Belfield	Sloop	23		Seafarer
709	Captiva	F. Carr	Sloop	27	4.0	Bristol
710	Amy Gail II	E. Raskin	Sloop	26		Grampian
711	Waft	B. Gutman	Sloop	27	3.4	Tartan
712	Kelmscott Chaucer	R. Schapiro	Sloop	27	4.0	Catalina
714	ULLr	M. Goldsmith	Sloop	28		Irwin
715	Whisper	A. McKenney	Sloop	24	1.7	Seafarer
716	Sundance	L. Deutsch	Sloop	26		Columbia
717	Deirdre-L	H. McTeague	Ketch	41	6.0	Island Trader
718	Venture	F. Fitzpatrick	Yawl	37	6.6	Alden
719	Parable	P. Kramer	Sloop	30	3.9	Mull
720	Amigo	R. Lynn	Sloop	29	2.1	Tylercraft
721	Goblin	J. V. Gould	Sloop	22	3.6	Bristol
723	Pez Oro	E. Haynes	Sloop	29	2.6	Seafarer
724	Evening Star	R. T. David	Schooner	42	4.6	Barnes
725	Windance	R. Brink	Sloop	27	4.3	Newport
726	Osprey II	C. Stoye	Sloop	18	2.6	Alberg Typhoon
731	Lovli II	V. Griski	Sloop	25	3.9	Hunter
732	Busman's Holiday	S. Brice	Sloop	27	2.3	O'Day
739	Cherrio	J. McKeen	Sloop	30	3.5	Morgan
740	Sea Fever	J. Friedman	Sloop	24	2.1	Allied
747	Eegabah	R. Ellison	Sloop	30	1.5	Catam.
750	Bellefour	W. Prendergast	Sloop	40	3.0	Chesapeake
757	Mac Finn	R. Korhonen	Cutter	32	5.0	Westsail
761	Altair	R. Jones	Sloop	25		Duet
771	Dawn Too	D. Jetzorreck	Sloop	30	4.7	Newport
774	Raggedy Ann	D. Cantor	Sloop	30		Iroquois Mk II
775	Solace	D. Spark	Sloop	32		Irwin
777	Fang	H. Labenow	Sloop	38	3.8	Morgan
789	Aeolus	L. Bernstein	Sloop	23	2.4	Grampian
790	Horizons	B. Hirsch	Ketch	42	5.0	Whitby
797	Sandpiper	J. R. O'Brien	Sloop	25	2.9	Irwin
798		S. Penny	Sloop	26	3.0	Grampian
802	Gull	S. Rague	Sloop	34	3.3	Morgan
808	Jacqueline II	R. Forman Jr.	Sloop	28	3.0	Morgan
822	Kleine Brise	V. Kind	Sloop	22	3.7	Sailstar
862	HappySneezy & Doc	C. Locke	Sloop	22	1.5	Continental
888	Too Much	W. Muchmore	Sloop	27	4.3	C & C
889	Wind-A-Full	A. Feldman	Sloop	27		Catalina
901	Mouette	A. Reinhard	Sloop	33	3.5	Swiftsure
913	Teal	J. Leggett	Sloop	22	3.2	Columbia
930	Curragh	T. McClone	Sloop	27	3.4	Tartan
981	Carte Blanche	E. Johnson	Sloop	20	2.5	Vivacity
983	Loon	L. Orr, Jr.	Sloop	33	3.6	Swiftsure
999	Duet	C. Kanter	Sloop	40	3.7	Catamaran
1020	Aloha Kai	A. Gschwindt	Cutter	33	3.0	Cox Trimaran
1060	Quest	F. Henry	Yawl	45	5.5	Hood

**SOUTH BAY CRUISING CLUB FLEET —
SAILING AUXILIARIES (Cont'd.)**

No.	Yacht	Owner	Rig	LOA	Draft	Model
1090	Courtesan	J. Young	Yawl	43	5.0	C & C Custom
1101	Rena T	A. Falik	Sloop	25	2.5	Westerly Windrush
1108	Odyssey	J. Crimaldi	Sloop	35	3.9	Seabreeze
1109	Skimmer	G. Wrage	Sloop	24		Seafarer
1126	Lenore	M. Greenbaum	Sloop	22	2.3	Kestrel
1128	Juniper	J. Istel	Sloop	35	3.8	Pearson
1134	Ceyx	S. Culviner	Sloop	28		Irwin
1161	Seacure	A. Bichsel	Sloop	24	3.5	Islander
1184	Rainmaker	H. Spatenga	Yawl	38	4.3	Tripp Custom
1223	Serena	R. Schultz	Sloop	24	2.8	Morgan
1224	Astarte	R. Horowitz	Sloop	23		O'Day
1258	Chiripa	R. de Murias	Sloop	35	3.9	Seabreeze
1271	Gin	R. Seidenspinner	Sloop	33	3.6	Swiftsure
1295	Sea Anemone	M. Avitable	Sloop	26	3.0	Centaur
1320	Free Spirit	R. Peterson	Sloop	26	4.0	Pearson
1325	Moonraker	D. Batty	Sloop	30	3.4	Bristol
1332	Vol Avec Le Vent	W. Lawson, Jr.	Sloop	22	3.2	Columbia
1471	Thirsty Boots	R. Sheppard	Sloop	27		Bristol
1530	IV Kings	D. King	Sloop	28		Irwin
1699	Sail "R"s	B. Rottkamp	Sloop	22	1.8	Catalina
1737	Loralee	L. Fring	Sloop	25	2.5	Coronado
1759	Aw-Gust	B. August	Sloop	25		Coronado
1776	Jubilation	E. Petroske	Sloop	34	3.8	Seafarer
1777	Respite	R. Biedermann	Sloop	24	3.0	Pennant
1886	T'ing Hao	W. Milligan	Yawl	37	4.0	Soverel
1999	Mistral II	M. Gellman	Sloop	26	4.0	Pearson
2001	Alpha	J. Morris	Ketch	38	2.5	Trimaran
2020	Golden Days	M. Silbert	Sloop	35	4.0	Bristol
2101	Synergy	D. Knife	Sloop	30	1.5	Catamaran
2156	Maryanne	R. O. Smith	Sloop	33	4.0	Pearson
2191	Haf "N" Haf	J. Robb	Sloop	26	4.0	Clipper
2377	Kandy Bar	W. Dwyer	Sloop	31	3.3	Corvette
2420	Whisper	Don Brown	Sloop	30	3.5	Morgan
2484	Sinn Fein	Earl Murray	Sloop	39	4.8	Pearson
2521	Kirsty	A. Golfman	Sloop	30	3.6	Wanderer
2540	Scamper	E. Saltzman	Sloop	25	2.3	Amphibicon
2627	Duchess	P. Wainwright	Sloop	30	3.6	Wanderer
2700	Destiny	J. French	Yawl	35	3.9	Seabreeze
2720	Abnaki	N. Bickford	Sloop	30	4.5	C & C Redwing
2790	Thursday's Child	F. Taussig	Ketch	51	4.5	S&S Motor Sailer
2823	Free Flight	J. Rieger	Sloop	35	3.9	Pearson
2885	Tuxn	G. Boulukos	Sloop	40	4.7	Columbia
2890	Snow Goose	J. Glynn	Sloop	31	3.3	Corvette
2904	Rujeleva	H. Breul	Sloop	27	3.4	Tartan
2913	Strawberry Fields	E. Sabbeth	Sloop	27	2.7	Irwin
3031	Whisper	R. Feszchur	Sloop	27	4.0	Catalina
3663	Spirit	J. Titterington	Sloop	31	3.3	Corvette

SOUTH BAY CRUISING CLUB FLEET — SAILING AUXILIARIES (Cont'd.)

No.	Yacht	Owner	Rig	LOA	Draft	Model
3697	Mistress	H. Hilgendorff	Sloop	42	4.5	XL-2
3813	Courageous	F. Wiedersum	Sloop	30	3.5	Morgan
3884	Dove	S. Greene	Sloop	43	6.7	P.J.
4242	Magic	C. Hayward	Sloop	35	3.8	Pearson
4271	Chanson	G. Baldwin, Jr.	Sloop	30	3.5	Morgan
4289	Mystic	R. Kanser	Sloop	30		Morgan
4358	Wandelaar	J. Schwartz	Sloop	35	3.8	Pearson
4402	Shangrila	E. Shreve	Sloop	26	3.7	Ariel
4450	White Wind	D. Salvante	Sloop	25		Hunter
4495	Eramia	M. Selvin	Sloop	32	3.5	Irwin
4516	Xenobia	P. Rosensweig	Yawl	35	3.9	Sea Breeze
4744	Mandalay	J. Saxe	Sloop	30	3.6	Wanderer
4817	Challenger	H. Johansen	Sloop	26		Pearson
4882	Serenity	K. Westhoff	Sloop	27	3.4	Tartan
5021	Impulse	H. Kenny	Sloop	21	3.6	Catalina
10207	Tranquilizer	R. M. Daytz	Sloop	38	3.8	Morgan
10221	Unicorn	L. Casey	Sloop	21	3.0	Electra
10521	Sea Plus	D. Mills	Yawl	35	3.7	Pearson
10988	Black Hawk IV	A. Saccio	Yawl	40	4.2	Bermuda
11238	Peregrinator	C. Phipps	Sloop	35		Pearson
11937	Manatuck	E. Reardon	Sloop	35	3.9	Seabreeze
12288	Nellie Bly	C. Ferenbach	Sloop	37	3.5	Soverel
12693	Happiness Is	J. Layton	Sloop	25		C & C
13629	Nuf	J. Sprole	Sloop	23		Ranger
14404	Shirl Girl	E. Remington	Sloop	26	4.0	Pearson
14501	Warlock	S. DeLise	Sloop	30		C & C
14656	Emanon	R. Crowley	Sloop	25	3.8	Hunter
14867	Blaze	R. LaBella	Sloop	25	3.8	C & C
20126	Odin	W. Schmal	Sloop	33	4.8	C & C
20233	Freewind	R. Novak	Sloop	33	4.5	C & C
20261	Valkyrie	H. Norwark	Sloop	28	4.6	Newport



MEMBER YACHTS ALPHABETICALLY (Including Power Vessels)

Yacht	No.	Radio	Owner	Yacht	No.	Radio	Owner
Abnaki	2720	—	N. Bickford	Chanson	4271	VHF	G. Baldwin
Aeolus	789	—	L. Bernstein	Chantey	133	AM	M. Barton
Aequanimitas	190	VHF	J. Canning	Charisma	77	—	R. Parker
Allegro II	370	VHF AM	J. Palmaro	Charisma	348	VHF	J. Ardito
Alma K	138	—	E. Wall	Charron's Ferry	106	—	R. Z. Brown
Aloha Kai	1020	VHF	A. Gschwind	Cherrio	739	—	J. McKeen
Alpha	2001	VHF	J. Morris	Chico	21	—	F. Braddon
Altair	761	—	R. Jones	Chippendale	189	—	D. Metcalf
Amen	444	—	W. Holmes	Chiripa	1258	—	R. deMurias
American Pie	389	VHF	B. Fainer	Cirrus	98	—	H. Glover
Amigo	720	VHF	R. Lynn	Civet I	144	—	J. Anisko
Amy Gail II	710	—	E. Raskin	Climax	1	AM	B. Max
Anache II	121	—	P. Savoca	Colleen	335	—	F. Horn
Andromeda	380	—	T. Hennessy	Colombina	523	—	J. Pares
Antigua	73	AM	F. Gauch	Courageous	3813	VHF	F. Wiedersum
Arabesque	63	VHF	W. Brady	Courtesan	1090	VHF AM	J. Young
Ark	123	VHF	G. Walsh	Curlew	353	—	C. Herrforth
Astarte	1224	—	R. Horowitz	Curragh	930	VHF	T. McClone
Athena	75	—	F. Pallas	Damsel	460	—	J. Reilley
Aw-Gust	1759	—	B. August	Dawn Too	771	—	D. Jetzorreck
Awiki II	170	VHF	R. Wendt	Decatur	64	VHF	R. Schafer
Bacchanal	336	—	F. LaMorell	Deirdre-L	717	VHF	H. McTeague
Bandersnatch	665	—	E. Miller	Deliana	174	—	W. Symons
Banshee	333	—	P. Kelly	Destiny	2700	VHF	J. French
Barcarolle	203	VHF	M. Goldsmith	Dial	186	—	W. Dreher
Batyam	282	VHF	M. Heller	Diana	704	—	A. Watts
Bay Song	601	—	E. Fishman	Dianalng	90	—	J. Kraker
B & B	180	VHF	R. Hollis	Dotty Ann	701	—	R. Benedict
Beedeebee	283	—	R. Baum	Dove	3884	—	S. Greene
Bellefour	750	VHF	W. Prendergast	Dovekie	161	VHF	R. Snyder
Bellwether	471	—	R. Reed	Dovekie	316	—	I. Cleaves
Betty	87	—	P. Ketcham	Duchess	2627	VHF	P. Wainwright
Bezan	213	—	F. Zangle	Duet	999	VHF	C. Kanter
Black Hawk IV	10988	VHF	A. Saccio	Dulcinea	666	VHF	J. Woodward
Blaze	14867	—	R. LaBella	Easy Jigs	208	—	E. Johnson
Blue Norther	104	VHF	R. Lampe	Ebb-Tide	112	—	J. Tarantino
Bones Apart II	211	VHF AM	M. Rein	Eegabah	747	—	R. Ellison
Bora	571	—	V. Radeka	Ellen	281	VHF	J. McInerney
Broadbill	71	—	W. Simonson	Emanon	14656	—	R. Crowley
Buccaneer	78	—	A. Pearson	Encore	384	—	G. Yerden
Busman's Holiday	732	—	S. Brice	Eramia	4495	VHF	M. Selvin
Butterfly	191	—	S. Pinks	Evening Star	724	—	R. T. David
Butterfly	238	—	J. Alberi	Eventide	365	—	A. Hack
Caljen	362	—	T. Alderson	Falcon	242	—	A. Heckel
Captiva	709	—	F. Carr	Fang	777	VHF AM	H. Labenow
Carte Blanche	981	—	E. Johnson	Feather	292	AM	T. E. Dauch
Ceyx	1134	—	S. Culviner	Figures III	702	—	W. Ceilly
Challenger	4817	—	H. Johansen				

MEMBER YACHTS (Cont'd.)

Yacht	No.	Radio	Owner	Yacht	No.	Radio	Owner
Filibuster	12	VHF	W. Brayshaw	Joed II	357	—	M. Feldman
Finale	369	VHF	R. Reid	Jolly Jack	468	VHF	J. Hollis
Fledermaus	128	AM	F. Miles	Joy Sea	146	VHF	M. Brass
Flighty Miss	145	VHF	H. Colleran	Jubilation	1776	VHF	F. Petroske
IV Kings	1530	—	D. King	Judylin II	51	—	R. Brown
Free Flight	2823	VHF	J. Rieger	Juniper	1128	—	J. Istel
Free Spirit	1320	CB	R. Peterson	Kalaki	708	—	R. Belfield
Freewind	20233	VHF	R. Novak	Kandy Bar	2377	AM	W. Dwyer
Fury	303	—	W. M. Teta	Katherine	260	—	E. A. Brooks
Ghost	74	AM	R. Logan	Kelmscott			
Gin	1271	AM	R. Seidenspinner	Chaucer	712	VHF	R. Schapiro
Gisela R	218	—	A. P. Schafer	Kirsty	2521	VHF	A. Golfman
'Glas Menagerie	320	—	B. Kennedy	Kismet	199	—	J. Berdolt
Glass Slipper	105	—	P. Reiser	Kitty Kat	332	—	E. S. Smith
Goblin	721	—	J. V. Gould	Kleine Brise	822	—	V. Kind
Godspeed II	421	VHF	E. Neale, Jr.	Lady Bug	297	—	R. Graham
Golden Days	2020	VHF	M. Silbert	Lady Lee	524	—	W. Cosgrove
Gone With The Wind	558	—	J. Schneider	Lady Lou V	53	—	J. Beinert
Good Wind	232	AM	H. Goodwin	Lady Lynn	99	—	K. Kondor
Gull	802	—	S. Rague	LaPaix II	433	VHF	D. Boyd
Haf N' Haf	2191	—	J. Robb	Lena	430	VHF AM	D. Stephani
Halcyon	52	—	R. Davis	Lenore	1126	—	M. Greenbaum
Happiness Is	243	—	N. Heckel	Leprechaun	322	—	H. Post
Happiness Is	12693	—	J. Layton	Liebchen	215	—	J. Perry
Happy Ours	229	—	A. Ruger	Liz	259	—	T. Madigan
Happy, Sneezy & Doc	862	—	C. Locke	Loon	983	AM	L. Orr, Jr.
Heather	532	—	A. Davies	Loralee	1737	—	L. Fring
Hephzibah	256	VHF	O. Davison	Lorelei	70	—	R. Lawrence
Here I Am	236	—	C. Abrams	Lorien	162	VHF	E. Buyer
High Barbaree	114	—	M. Lostritto	Lorna Doone	120	—	R. VanNostrand
Hollandia	110	—	J. A. Pless	Lovli II	731	—	V. Griski
Horizon	107	—	F. Atwood	Lynoro	361	—	N. Lampe
Horizons	371	VHF	E. Schecker	Mac Finn	757	—	R. Korhonen
Horizons	790	VHF	B. Hirsch	Madcap III	391	—	W. J. Roberts
Ichi Ban	287	—	J. Boyajian	Maeva	310	—	H. Borntraeger
Idlewile	115	—	F. Wile	Magic	118	—	D. McClure
Illusion	92	—	G. Giffords	Magic	4242	VHF	C. Hayward
Impulse	5021	—	H. Kenny	Maia	205	—	A. McGeary
India Lou	366	—	W. Lehman	Manana II	23	—	F. Holwell
Ishtar	22	—	F. Becker & T. Henry	Manatuck	11937	VHF	E. Reardon
Jacqueline II	808	—	R. Forman	Mandalay	4744	VHF	J. Saxe
Jan Maat	153	VHF AM	V. Sailor	Marshmallow World	141	VHF	T. Bolger
Jeanie	102	—	T. Hangarter	Maryanne	2156	—	R. O. Smith
Jimel	422	—	J. Heacock	Memory	68	—	R. Heess
				Menehune	239	—	D. Gardner
				Merri Mac	300	—	B. MacGill

MEMBER YACHTS (Cont'd.)

Yacht	No.	Radio	Owner	Yacht	No.	Radio	Owner
Merry Ann	220	—	W. Cook	Raggedy Ann	774	VHF	D. Cantor
Mirage	427	—	W. Tauby	Rainmaker	1184	AM	H. Spatenga
Miramar	244	—	J. Magovern	Red Baron	219	VHF	E. Kaiser
Miss Betty	298	AM	W. Menger	Rehbock	263	VHF	J. H. Bogan
Mistral II	1999	—	M. Gellman	Release	183	VHF	R. Webb
Mistress	3697	VHF AM	H. Hilgendorff	Reliance	108	—	R. Glinick
Misty	231	VHF	W. Rohde	Renarde	555	—	W. M. Aubin
Misty	707	—	H. Holler	Rena-T	1101	AM	A. Falik
Moonraker II	325	—	P. H. Batty	Resistance	176	VHF	R. Dunlop
Moonraker	1325	—	D. Batty	Respite	1777	—	R. Biedermann
Mouette	901	AM	A. Reinhard	Reverie	234	VHF	W. Cummins
Mystic	4289	—	R. Kanser	Ruddy Duck	217	VHF	R. S. Davison
				Rujeleva	2904	—	H. Breul
				Ruth II	113	AM	H. Gottwald
Nancee II	241	—	R. Woodhull				
Nancily	93	VHF	S. T. Smith	Sagwa	314	—	D. Bernard
Nellie Bly	12288	—	C. Ferenbach	Sail "R"s	1699	—	B. Rottkamp
Nit	703	VHF	J. Hoston	Sanderling	668	—	R. Nehring
Nor'Easter	142	—	R. Boyd	Sandpiper	797	—	J. R. O'Brien
Norma	240	VHF	H. Camp	Sans Souci	398	—	R. Zeisler
North Star	65	—	D. Holsclaw	Sark	417	—	A. Koller
Nuf	13629	—	J. Sprole	Scamper	2540	AM	E. Saltzman
				Scotch N' Water	306	—	W. Kachel
Odin	20126	—	W. Schmal	Scrimshaw	288	—	H. Kahn
Odyssey	1108	—	J. Crimaldi	Sea Anemone	1295	—	M. Avitable
Onda	347	—	J. Crowe	Sea Chantey	184	VHF	I. Polk
Osprey	193	VHF	M. Fleming	Sea Cloud	139	VHF	R. Luckner
Osprey II	726	—	C. Stoye	Seacure	1161	—	A. Bichsel
Orca	156	VHF AM	B. Rosenberg	Seadawn	143	—	D. Greatsinger
				Sea Dream	423	VHF	W. Dunleavy
Panacea	271	VHF	S. Herman	Sea Fever	299	VHF AM	E. Henkel
Parable	719	VHF	P. Kramer	Sea Fever	740	—	J. Friedman
Patty Wagon	89	—	D. Wood	Sea Gypsy	452	VHF	C. Mignerey
Pegasus	382	—	C. Sagarese	Sea Hawk	154	—	R. Thomson
Peregrinator	11238	VHF	C. Phipps	Sea Jay	35	—	J. Wragge
Periwinkle	16	AM	J. Hack	Sea Plus	10521	VHF	D. Mills
Pez Oro	723	—	E. Haynes	Sea Sprite	331	VHF	A. Wieda
Phragmite	368	—	C. Frederick	Sea Wench	344	VHF	R. Ernst
Pisces	163	VHF AM	L. Kaitz	See Lust	290	—	E. Pawlitschek
Polly Bee	111	—	J. Ryan	Serena	1223	—	R. Schultz
Pony Tail	155	—	J. Regan	Serenity	4882	—	K. Westhoff
Pooka	119	—	R. Owens	Shalom Rav	233	—	H. Goldson
Psyche IV	295	—	J. Chasas	Shangrila	4402	AM	E. Shreve
Puritan	152	VHF	R. Ramsdell	Shearwater	124	—	C. Stearns
				Shelley	466	VHF AM	I. Herman
Quadrant	388	—	H. Langley	Shirl Girl	14404	—	E. Remington
Queen E	266	CB	J. Reilly	Siesta	411	—	T. Hanaway
Quest	651	—	R. Mason	Sinn Fein	2484	VHF	Earl Murray
Quest	1060	VHF AM	F. Henry	Skimmer	1109	—	G. Wrage
Quintet	224	—	H. Magidson	Skylark	45	AM	W. Thayer

MEMBER YACHTS (Cont'd.)

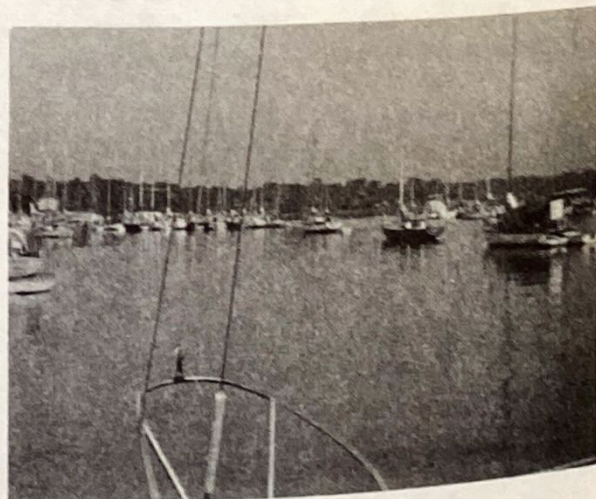
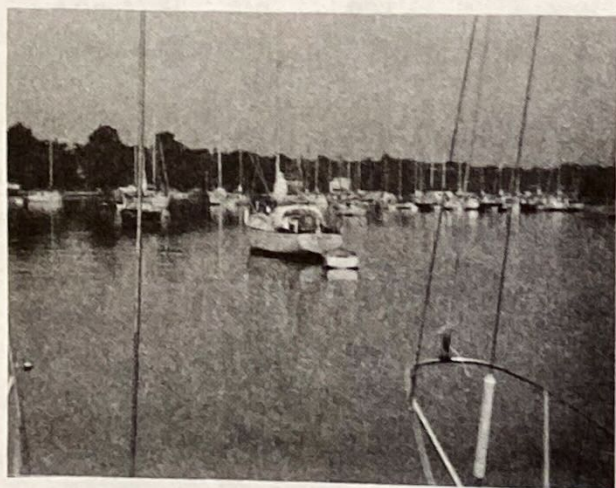
Yacht	No.	Radio	Owner	Yacht	No.	Radio	Owner
Slim	62	—	H. Hamstra	Utopia	222	VHF	D. Zimmer
Snow Goose	2890	AM	J. Glynn	Valhalla	96	—	W. Kleisler
Snuggle Bug II	209	VHF	J. Ross	Valkyrie	148	—	E. Farrell
Solace	775	—	D. Spark	Valkyrie	207	—	L. Cyr
Southwind	226	VHF AM	W. Konz	Valkyrie	20261	VHF	H. Norwalk
Sparkling Waters	46	—	R. Pasch	Vela II	182	AM	A. Rising
Spindrift	530	—	R. Lund	Venture	60	VHF	C. Bernichon
Spirit	76	—	E. Ricketts	Venture	718	AM	F. Fitzpatrick
Spirit	3663	—	J. Titterington	Venus	276	AM	D. Iurillo
Spoondrift	196	—	W. Batty	Venus	544	VHF	H. Freudenthal
Stanpey	568	VHF	H. Smith	Vi	125	VHF	A. Yaxis
Starshine	197	AM	G. Seaman	Vol Avec Le Vent	1332	—	W. Lawson, Jr.
Starward	548	AM	J. Moore	Waft	711	AM	B. Gutman
Staryker	116	—	D. McPherson	Wandelaar	4358	—	J. Schwartz
Strawberry Fields	2913	—	E. Sabbeth	Wanderlust	127	—	R. Holzmacher
Strega	192	—	P. D'Agrosa	Wanderlust III	313	—	R. Kumpf
Sumaka IV	277	—	F. Eggerstedt	Warlock	14501	CB	S. DeLise
Summer Wind	66	VHF	R. Wissman	Whisper	443	—	R. Sherwood
Sundance	716	—	L. Deutsch	Whisper	715	—	A. McKenney
Sunriser	346	—	H. Smith	Whisper	2420	VHF	D. Brown
Synergy	2101	—	D. Knife	Whisper	3031	VHF	R. Feszchur
Tally Ho	221	AM	G. Moldestad	Whistler	19	—	H. Tilden
Tammy Norie	164	—	J. Goodale	White Cloud	204	—	J. Cahill
Tara	328	—	E. Clarke	White Wind	4450	—	D. Salvante
Teal	268	—	S. Goldsmith	Wild Thyme	442	VHF	B. Spivack
Teal	913	—	J. Leggett	Willopeg	424	—	W. Ciocys
Teezim Too	10	VHF	F. Zimmerman	Wind-A-Full	889	—	A. Feldman
Terryfier	396	VHF	A. Schneider	Windance	725	—	R. Brink
Therapy	345	—	B. Cohn	Windhover	291	—	W. Kallman
Thirsty Boots	1471	—	R. Sheppard	Windjammer	134	—	H. Horn
Thursday's Child	2790	VHF AM	F. Taussig	Windsong	279	—	A. Bertapelle
Ting Hao	1886	VHF AM	W. Milligan	Winds Rush	83	—	P. Rhodes
Too Much	888	VHF	W. Muchmore	Windquest	318	VHF	R. Stephens
Trade Winds	354	—	P. Curry	Winky	700	—	B. Hesse
Tradition	435	—	J. Brown	Winsom	403	VHF	R. Reimer
Tranquilizer	10207	AM	R.M. Daytz	Witch	569	AM	D. Munroe
Troubadour	416	VHF	M. Portnoy	Wooden World II	67	AM	D. Streit
Tuxn	2885	AM	G. Boulukos	Xanadu	383	—	P. Colombo
ULLr	714	—	M. Goldsmith	Xenobia	4516	VHF	P. Rosensweig
Unicorn	10221	—	L. Casey				

POWER VESSELS

Alice V	—	J. McGeehan	First Light	AM	R. Stuhler
Big Dipper	—	C. Paterson	Isdon	AM	A. Klesick
Charlotte L	VHF	H. O. Atwood	Island Woman	—	E. Seidenberg

MEMBER YACHTS (Cont'd.)

Yacht	No.	Radio	Owner	Yacht	No.	Radio	Owner
POWER VESSELS (Cont'd.)							
Lady Rose II		—	A. Flowers	Pontus		VHF	R. Howell
Les Girls		—	C. Andrews	Salaam		—	T. Underhill
Lief The Lucky		—	R. Wills	Sea Cob II		—	F. Schneider
Miller's Eagle		—	G. Miller	Tamb		VHF	W. Bracco
Old Salt III		—	R. Carl	Wahoo III		—	E. Peck
Old Squaw		—	D. Davison	Watersport		—	W. Thomas
Outcast		VHF	E. Neale, Sr.	Wild Duck		—	O. Brooks



MEMBERS' ZIP CODES

Ashland, N.H. 03217	Malverne 11565
Babylon 11702	Manhasset 11030
Baldwin 11510	Melville 11746
Bayport 11705	Massapequa 11758
Bay Shore 11706	Massapequa Park 11762
Bellmore 11710	Mattituck 11952
Bellport 11713	Merrick 11566
Berkeley Heights, N.J. 07922	Nesconset 11767
Blue Point 11715	New Hyde Park 11040
Bohemia 11716	New York City, <i>Note Below</i>
Brentwood 11717	North Babylon 11703
Brightwaters 11718	Oakdale 11769
Brookhaven 11719	Oceanside 11572
Brookville 11545	Old Bethpage 11804
Central Islip 11722	Patchogue 11772
Cliffside Park, N.J. 07010	Peekskill 10566
Climax 12042	Plainview 11803
Commack 11725	Point O'Woods 11775
Copiague 11726	Port Washington 11050
Deer Park 11729	Richmond Hill 11418
East Farmingdale 11735	Rockville Centre 11570
East Islip 11730	Rutherford, N.J. 07070
East Patchogue 11772	St. Petersburg, Fla. 33705
East Rockaway 11518	Sayville 11782
Englewood, N.J. 07631	Scarsdale 10583
Farmingdale 11735	Seaford 11783
Fort Lauderdale, Fla. 33312	Setauket 11733
Freeport 11520	Shaker Heights, Ohio 44122
Garden City 11530	Shoreham 11786
Great River 11739	Smithtown 11787
Hempstead 11550	Stony Brook 11790
Hicksville 11801	Syosset 11791
Huntington 11743	Tamarac, Fla. 33319
Island Park 11558	Tuckahoe 10707
Islip 11751	Valley Stream 11581
Islip Terrace 11752	Waldoboro, Maine 04572
Jackson Heights 11372	Wantagh 11793
Kew Gardens 11415	West Babylon 11704
Keyport, N.J. 07735	West Hempstead 11552
Kings Point 11024	West Islip 11795
La Jolla, Calif. 92037	West Sayville 11796
Larchmont 10538	Weston, Conn. 06880
Levittown 11756	Willamette, Ill. 60091
Lindenhurst 11757	Woodbury 11797
Long Beach 11561	Woodmere 11598
Lynbrook 11563	Wyandanch 11798

NOTE: For Zip Codes in five city Boroughs, refer to telephone Yellow Page Directory for respective Borough.

INTERNATIONAL CODE FLAGS AND PENNANTS

A		L		W		<p>NUMERAL PENNANTS</p> <p>1 </p> <p>2 </p> <p>3 </p> <p>4 </p> <p>5 </p> <p>6 </p> <p>7 </p> <p>8 </p> <p>9 </p> <p>0 </p>
B		M		X		
C		N		Y		
D		O		Z		
E		P		<p>REPEATERS</p> <p></p> <p>First Repeater</p> <p></p> <p>Second Repeater</p> <p></p> <p>Third Repeater</p>		
F		Q		<p>CODE AND ANSWERING PENNANT</p> <p></p>		
G		R				
H		S				
I		T				
J		U				
K		V				

LEGEND = WHITE = YELLOW = RED = BLACK OR BLUE

