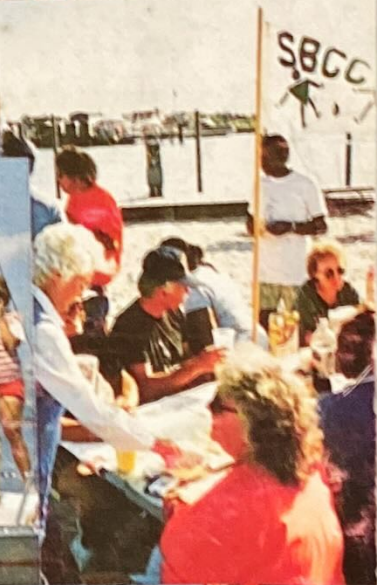


SOUTH BAY CRUISING CLUB 1990





26/2



SOUTH BAY CRUISING CLUB

TABLE OF CONTENTS

Past Commodores	2
Commodore's Message	4
Regatta & Fleet Captain's Messages	5
Officers, Board of Governors & Committees	6
Social & Cruising Schedule	8
Racing Schedule	9
Notes to Racing Schedule	15
Notes to Cruising Schedule	16
Racing Program & Instructions	17
Qualifying to Race	17
Handicaps & Classes	18
Racing Rules & Program	19
Race Scoring & Trophies	21
Committee Boat Assignments	22
Starting Line Procedures & Rules	23
Time Limit & Protests	25
SBCC Safety Information	26
Race Courses	27
SBCC Ships Store	31
The Year in Review	33
1989 Cruising Awards	42
SBCC Perpetual Trophies	43
1989 Trophies	45
SBCC Class Champions	47
SBCC Members	49
SBCC Fleet By Sail Number	61
Members' Yachts Alphabetically	68
Members' Zip Codes	73
Memoriam	74
Flag Etiquette	75
International Code Flags & Pennants	80

HONORARY LIFE MEMBERS (PAST COMMODORES)

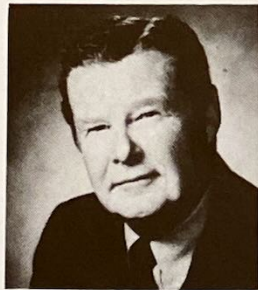
The SBCC grants honorary life membership to all Past Commodores, in recognition of their devotion and duty to the Club. Each of them has contributed time, talent and friendship to help make the South Bay Cruising Club the success it is today.



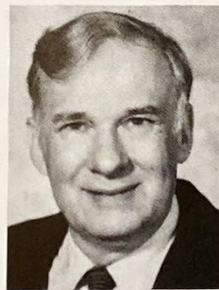
BILL DWYER
1980 - 1981



KEN KONDOR*
1982-1983



EARL MURRAY
1984-1985



ANDY DAVIES
1986-1987



DON ZIMMER
1988-1989

**Deceased*

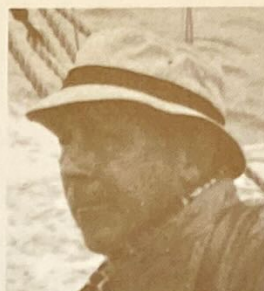
HONORARY LIFE MEMBERS (PAST COMMODORES)



WILLIAM CARL
1951



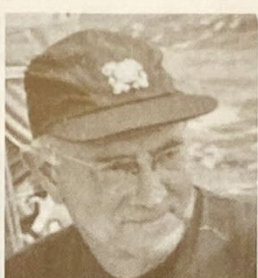
JAMES A. SWAN, JR.*
1952-1953



JOHN F. YOUNG
1954-1955



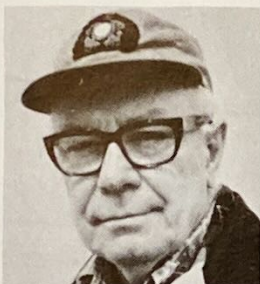
HENRY A.V. POST
1956-1957



MERRITT L. SMITH*
1958-1959



ROBERT L. PATERSON*
1960-1961



JOHN D. BEINERT*
1962-1963



EVERETT SEIDENBERG
1964-1965



ROGER G. RAMSDELL
1966-1967



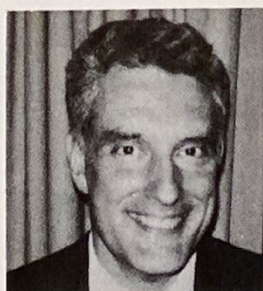
ALEX PEARSON
1968-1969



FRED C. EGGERSTEDT, JR.
1970-1971



WILLIAM F. BRADT*
1972-1973



M. WHITING THAYER
1974-1975



BUD ROSENBERG
1976-1977



RICHARD C. NEHRING
1978-1979

*Deceased



COMMODORE'S MESSAGE 1990

It was, throughout my younger years, that those who sailed on the Great South Bay held those members of the South Bay Cruising Club in highest esteem and admiration. To be a member of this prestigious organization meant that you were someone special in the sailing world. Nothing has changed. This is the finest group of sailing enthusiasts, bar none.

Serving the club in the various positions over the years has been a great source of personal satisfaction to me and to serve as commodore is the fulfillment of a lifelong goal. I'm sure that I face the same dilemma as my predecessor commodores in that to make improvements in this club is very difficult but to fill the leadership role is made easy by the diligent support of the members of the governing



board; they who share in the single idea of making this organization fun for all. To be a member is fun and it becomes more so when you are involved in the myriad of activities the club offers. You have but to read through the pages of this yearbook to see that this club offers something for everyone. No matter how you use your boat; be it racing; cruising; for rendezvous or day sailing on the bay; there is no right or wrong way, only what's fun for you. I encourage you to participate in as many events as you can — try racing if you are a cruiser (there's no longer a fee involved); try rendezvous if you are a racer. I'm sure you'll meet new friends and enjoy the relaxation. Don't refrain from participating because you don't know the people involved. There are no strangers in the club, only friends you haven't met yet. This is your club — please enjoy it to the fullest!

I wish you health, happiness and smoother sailing for the 1990 season.



SOUTH BAY CRUISING CLUB

FLEET CAPTAIN'S MESSAGE Cruising 1990

"In as much as the earth's surface is three quarters water and one quarter land, the good Lord's intentions are perfectly clear — people should spend three quarters of their time sailing and one quarter working." That bit of wisdom by Ellen Marko Moran is well worth implementing and I hereby present it as the SBCC cruising goal for 1990.

As your Fleet Captain, I challenge each of you to accept Ms. Moran's credo and get out there with the sea gulls, the wind, the sunshine and the spray and, above all, your fellow SBCC members.

I, in turn, dedicate myself to making cruising with the South Bay Cruising Club easy, enjoyable, plentiful and safe. The Cruising Committee has scheduled extra rendezvous, some with special entertainment and each hosted by a friendly, fun-loving Committee member. The usual green water cruises are being offered, as well as a few heading south to Atlantic City. The one week In-the-Bay cruise promises to have something for everyone and there will be a Great River Week for the whole family.

Come on out and join the fun!

Ed Petroske, Fleet Captain

REGATTA CAPTAIN'S MESSAGE Racing 1990

Sailboat racing for most people is not a spectator sport. We hear the oft repeated adage that watching a sailboat race is like watching grass grow. Those of us who have been lucky enough to have experienced it from the cockpit of a racing boat, however, know the sport for what it really is. The best description I have heard appears on the transom of a well known North Shore racer's boat. Sailboat racing consists of uneventful and sometimes boring periods of attention to minute detail and sailtrim interspersed with split seconds of STARK TERROR. Anyone who has ever charged toward a crowded starting line, rounded a bottom mark at close quarters in a blow, or crossed tacks with another boat with inches separating the two knows the true exhilaration of racing.

As our season draws near, I spend the days in the boat yard intoxicated by the smells, the sounds, and the camaraderie of my fellow boaters readying their boats for launching. These sensations I share with all sailors. But this is only part of it. The real fever of Spring lies in my memories of racing in years past. How clearly I recall the feeling of adrenaline pumping through my body as I hear the sound of the ten-minute gun.

With the elimination of racing dues, every member of our club is eligible to race. I strongly encourage each of you to catch the fever. Join us and experience those brief seconds of STARK TERROR. Sailing will take on a whole new dimension for you.

Good Sailing
Barry Pittman, Regatta Captain

SOUTH BAY CRUISING CLUB

An organization formed in 1951 to promote cruising under sail on Great South Bay and nearby waters.

OFFICERS

Commodore, Robert J. Sheppard

Vice Commodore, Michael G. Smith

Fleet Captain, Edward Petroske

Corresponding Secretary, Dr. John Canning

Fleet Surgeon, Dr. Andrew Peters

Regatta Captain, Barry Pittman

Rear Commodore, Norman Robertson

Treasurer, Thomas F. O'Connell

Recording Secretary, Jim Ferguson

Chanteyman, Edward J. Schecker

BOARD OF GOVERNORS

John R. Classen, Thomas Gotard, Thomas J. Tyler, Gerard J. Keenan

Donald J. Zimmer, William M. Menger, Alexander G. Yaxis

COMMITTEES

CHAired BY

Championship and GSBYRA Representative David Pearsall — 264-0872

Cruising Edward Petroske — 586-9509

Charles & Barbara Becker, Russ & Linda Colombo, Rich & Joan Czach, Dick & Sheila Daytz
Steve & Debbie Etimos, Jim & Donna Ferguson, John & Gail Hessel, Ed & Fran Hettinger
Bob & Ardith Holzmacher, Erwin & Gertrude Kissenberth, Michael & Robin Kohl
Andy & Kenna Lovito, Larry & Diane Lowy, Jack & Barbara Nielsen, Bob & Ronnie Martorana
Leo & Margaret O'Reilly, Andy & Fran Peters, Barry & Michelle Pittman,
Norm & Doris Robertson, Ron & Ann Sanalidro, Ed & Mary Schecker, Jay & Marion Schwartz
Joe & Renate Steinert, Larry & Rachelle Tokar, Alex & Vi Yaxis, Don & Laurie Zimmer
Tom & Bernadette Poulos, Joe & Marge Archer

Handicap & Measurement Greg Schneller — 587-6236
Brendan Brownyard, Doug Davies, Bill Grauer, Gerry Keenan, Dick LaBella
David MacDonell, Tom O'Connell, Thom Penn, Steve Penny

Historian Eugene M. Reardon — 968-5082

Hospitality Ronald & Ann Sanalidro — 589-2968
Lou & Jeffrie Natale — 862-7511

Marge & Joe Archer, Charlie & Barbara Becker, Bob & Jane Cresci, Rich & Joan Czach,
Ed & Fran Hettinger, Tony & Paulette Jones, Bill & Beverly Kimbell,
Gertrude & Erwin Kissenberth, Michael & Robin Kohl, Jeff & Claudia Kracht,
Bob & Ronnie Martorana, Joe & Dorothy McCormack, Jack & Barbara Nielsen,
Ed & Joan Petroske, Bill & Sue Rottkamp, Bob & Shirley Rouse,
Ed & Mary Schecker, Jim & Dianne Schlitt, Larry & Rochelle Tokar, Merritt & Maryellen Warsaw

Membership & Welcoming Virginia C. LaTorre — 997-9638
Richard LaTorre, Rick LaTorre

(Continued)



SOUTH BAY CRUISING CLUB

COMMITTEES (Cont'd.)	CHAired BY
<i>Planning</i>	Michael G. Smith — 661-1106
<i>Program & Education</i>	Howard Rapps — 422-3969
Jim & Donna Ferguson, Gerard & Anne Keenan, Thomas & Susan O'Connell, Linda Rapps, Ed & Mary Schecker, Michael & Virginia Smith	
<i>Protest</i>	Richard J. LaBella — 277-4826
Greg Schneller, Douglas Crocker, Dick Graham, Bill Grauer Frank Marinaccio, Tom O'Connell, Thom Penn, John Saxe	
<i>Race Scorer</i>	William Grauer — 277-6212
Dick Burns, Michael Goodman, Tony Jones, Gerry Keenan, Dick LaBella, Marty O'Connell, Tom O'Connell, Jim Ryan, Greg Schneller	
<i>Regatta</i>	Barry Pittman — 666-6572
Bill Cook, Lee Christiansen, Doug Davies, John Davis, Aileen Eppig, Mike Goodman Bill Grauer, Howard Hamstra, Jerry Keenan, Tony Jones, Dick LaBella, Frank Marinaccio, Tom O'Connell, Cary & Dave Pearsall, Thom Penn Steve Penny, Jim Reichel, Jim Ryan, Greg Schneller	
<i>Storekeeper</i>	Barbara Connor — 665-7266
Judi Flett	
<i>Trophy</i>	Stephen L. Penny — 661-5952
	Ben Nerenberg — 669-8017
Edie Louise Penny, Mary Ann Nerenberg	
<i>Yearbook</i>	Michael L. Kohl — 795-7725
Robin Kohl, Virginia LaTorre, Thomas & Joyce Gotard, Michael & Virginia Smith, Roger Ramsdell, John & Lorraine Classen	

**SBCC IS A MEMBER OF THE GREAT SOUTH BAY YACHT RACING ASSOCIATION
AND UNITED STATES YACHT RACING UNION**



SOUTH BAY CRUISING CLUB 1990 SOCIAL AND CRUISING SCHEDULE

Date	Day	Event	Location	Vessel	Captain
Apr. 28	Sat.	Spring Buffet	Bay Shore YC	Hospitality Committee	
May 5	Sat.	Rendezvous	Great River	Jubilation	E. Petroske
May 12	Sat.	Rendezvous	Hemlock Cove	Tranquilizer	R. Daytz
May 19	Sat.	Rendezvous	Great River	Moonraker	R. Martorana
May 26	Sat.	Rendezvous	Oak Island Lead	Keriann	N. Robertson
May 28	Mon.	Commissioning Day	Babylon YC	Hospitality Committee	
Jun. 2	Sat.	Rendezvous & Dinner	Unqua Corinthian YC	Utopia	D. Zimmer
Jun. 9	Sat.	Family Weekend	Watch Hill	Hydrotherapy	R. Kohl
Jun. 16	Sat.	Dad's Day Rendezvous	Great River	Vi	A. Yaxis
Jun. 23	Sat.	Barbeque Rendezvous	Robert Moses Basin	Drumshanbo	B. Pittman

SOUTH BAY CRUISING CLUB 1990 RACE SCHEDULE

Date	Day	Event	Warn- ing Gun	Start- ing Seq.	Notes	Race Chairman	Starting Location	Course
May 20	Sun.	Tune-Ups	1200 TBA	Reg.	2,3,13	W. Grauer	Babylon	A-I
May 28	Mon.	Creepstakes	1100	Crpstks	1,10	A. Eppig	Babylon	D-F
May 30	Wed.	W. Twilight Spring I	1930	Reg.	2,4	P. Vandervort M. Meyerson	Bay Shore	A-I
May 31	Thur.	Babylon Twilight Spring I	1930	NoSp.	2,4	D. Leiman	Babylon	A-I
Jun. 3	Sun.	Founder's Cup	1200	Exp.	7	E. Brooks	Nicoll Bay	A-H
Jun. 6	Wed.	W. Twilight Spring II	1930	Reg.	2,4	T. Jones	Bay Shore	A-I
Jun. 7	Thur.	Babylon Twilight Spring II	1930	NoSp.	2,4	D. Crocker	Babylon	A-I
Jun. 10	Sun.	Spring Family Race	TBA	NoSp.	1,11	D. Spivack	Watch Hill	B
Jun. 13	Wed.	W. Twilight Spring III	1930	Reg.	2,24	A. Peters	Bay Shore	A-I
Jun. 14	Thur.	Babylon Twilight Spring III	1930	NoSp.	2,24	K. Padden	Babylon	A-I
Jun. 16	Sat.	SMITH TROPHY	1300	Expd.	1,7,9	L. Becker	Bay Shore	A-I
Jun. 20	Wed.	W. Twilight Summer I	1930	Reg.	2,4	W. Cook	Bay Shore	A-I
Jun. 21	Thur.	Babylon Twilight Summer I	1930	Reg.	2,4	G. Schneller	Babylon	A-I
Jun. 23	Sat.	Spring Ocean	1100	Reg.	5,11	J. Pallotta	Ocean	A-C
Jun. 27	Wed.	W. Twilight Summer II	1930	NoSp.	2,4	T. Penn	Bay Shore	A-I
Jun. 28	Thur.	Babylon Twilight Summer II	1930	Reg.	2,4	L. Tokar	Babylon	A-I

SOUTH BAY CRUISING CLUB 1990 SOCIAL AND CRUISING SCHEDULE

Date	Day	Event	Location	Vessel	Captain
Jun. 29	Fri.	Atlantic City Rendezvous	Robert Moses Basin	Shoot'n The Breeze Lady Barbara	R. Czach B. Nielson
Jun. 30	Sat.	Rendezvous	Secret Harbor	Wanderlust	B. Holzmacher
Jul. 7	Sat.	Murder Mystery Rendezvous	Great River	Jubilation	J. Petroske
Jul. 8-14		GREAT RIVER WEEK	Great River	Aisling Estelle	L. O'Reilly A. Peters
Jul. 8	Sun.	Sunday Church Call 0900	Snapper Inn	Quadrant	Fr. H. Langley
Jul. 8	Sun.	Champagne Breakfast	Great River	Mis-Jef Summer Whim	L. Natale R. Sanalidro
Jul. 9	Mon.	Donuts/Coffee 0900 Sail to Sand 1000	Great River Watch Hill	Aisling Aisling	L. O'Reilly L. O'Reilly
Jul. 10	Tue.	Family Games	Watch Hill	Jubilation	E. Petroske
Jul. 11	Wed.	Sail to Great River	Great River	Aisling	L. O'Reilly
Jul. 12	Thur.	Commodore's Dinner	Snapper Inn	Keriann Yellowbird	N. Robertson M. Smith
Jul. 13	Fri.	Dinghy Tour	Great River		
Jul. 13	Fri.	Ladies' Luncheon			
Jul. 14	Sat.	Great River Blast	Timber Point Park	Mis-Jef Summer Whim	J. Natale R. Sanalidro
Jul. 15	Sun.	Start of One-Week Cruise	Great River	Rhapsody Second Edition	E. Hettinger T. Poulos
Jul. 21	Sat.	Theatre Rendezvous	Bellport	Magic	R. Sheppard

SOUTH BAY CRUISING CLUB 1990 RACE SCHEDULE

Date	Day	Event	Warn- ing Gun	Start- ing Seq.	Notes	Race Chairman	Starting Location	Course
Jul. 1	Sun.	Babylon YC Invitational I	1100	Reg.	2,11	BYC	Babylon	A-I
Jul. 3	Tues.	W. Twilight Summer III	1930	NoSp.	2,4	B. Pittman	Bay Shore	A-I
Jul. 4	Wed.	Babylon YC Invitational II, III	1100 1400	Reg.	2,11	BYC	Babylon	A-I
Jul. 5	Thur.	Babylon Twilight Summer III	1930	Reg.	2,4	G. Huberman	Babylon	A-I
Jul. 7	Sat.	WEST ISLAND	1300	W. IIs.	1,5,9	F. Marinaccio	Nicoll Bay	B
Jul. 11	Wed.	Race Week I	1400	Expd.	2	H. Hamstra	Nicoll Bay	A-H
Jul. 12	Thur.	Race Week II	1400	Expd.	2	R. Burns	Nicoll Bay	A-H
July 13	Fri.	Race Week III	1400	Expd.	2	M. Smith	Nicoll Bay	A-H
Jul. 14	Sat.	Race Week IV & Wind-Up	1100	Expd.	1,2, 7,15	S. Huges	Nicoll Bay	A-H
Jul. 18	Wed.	W. Twilight Mid-Summer I	1930	Reg.	2,4	R. LaBella	Bay Shore	A-I
Jul. 19	Thur.	Babylon Twilight Mid-Summer I	1930	NoSp.	2,4	G. Dannels	Babylon	A-I
Jul. 22	Sun.	BYC-SBCC Challenge	1300	TBA	1	BYC	Babylon	TBA
Jul. 26	Thur.	Around Long Island	TBA	Spec.		Newsday	Richmond YC	TBA

SOUTH BAY CRUISING CLUB 1990 SOCIAL AND CRUISING SCHEDULE

Date	Day	Event	Location	Vessel	Captain
Jul. 28	Sat.	Wurst Rendezvous	Hemlock Cove	Twenty Two Fifty	L. Tokar
Jul. 28	Sat.	Three-Week Begins	TBA	Jubilation Summer Whim	E. Petroske A. Sanalitra
Aug. 4	Sat.	Rendezvous Sail to Beach	Great River Sailor's Haven	Never Say Never	S. Etmos
Aug. 4	Sat.	Start of Two-Week Cruise	TBA	Flying Cloud Fare Thee Well	E. Kissenberth J. Hessel
Aug. 11	Sat.	Suffolk Symphony Fireworks - Rendezvous	Secret Harbor	Horizons	E. Schecker
Aug. 18	Sat.	Two- & Three-Week Cruise - Rendezvous	Great River	Flying Cloud Fare Thee Well	E. Kissenberth J. Hessel
Aug. 18	Sat.	Rendezvous	Hemlock Cove	Big Joe	J. Archer
Aug. 25	Sat.	Backyard Rendezvous	Great River	Rhapsody Summer Whim	E. Hettinger R. Sanalitra

SOUTH BAY CRUISING CLUB 1990 RACE SCHEDULE

Date	Day	Event	Warn- ing Gun	Start- ing Seq.	Notes	Race Chairman	Starting Location	Course
Jul. 26	Thur.	Race Week I	1300	Reg.	12	GSBYRA	Babylon	TBA
Jul. 27	Fri.	Race Week II	1300	Reg.	12	GSBYRA	Babylon	TBA
Jul. 28	Sat.	Race Week III	1300	Reg.	12	GSBYRA	Babylon	TBA
Jul. 29	Sun.	Race Week IV	1000	Reg.	12	GSBYRA	Babylon	TBA
Aug. 1	Wed.	W. Twilight Mid-Summer II	1930	Reg.	2,4	R. Coleman	Bay Shore	A-I
Aug. 2	Thur.	Babylon Twilight Mid-Summer II	1930	NoSp.	2,4	R. Foreman	Babylon	A-I
Aug. 4	Sat.	Dinner Race	1700	Reg.	4	M. O'Connell	Bay Shore	A-I
Aug. 8	Wed.	W. Twilight Mid-Summer III	1930	Reg.	2,4	B. Kimbell	Bay Shore	A-I
Aug. 9	Thur.	Babylon Twilight Mid-Summer III	1930	NoSp.	2,4	T. Hangarter	Babylon	A-I
Aug. 11	Sat.	SBCC Invitational	1300	Expd.	11	E. Miller	Babylon	A-I
Aug. 15	Wed.	W. Twilight Fall I	1900	NoSp.	2,4	S. Etimos	Bay Shore	A-I
Aug. 16	Thur.	Babylon Twilight Fall I	1900	Reg.	2,4	J. Grover	Babylon	A-I
Aug. 18	Sat.	Bay Shore YC Invitational I, II	1045 1345			BSYC	Bay Shore	TBA
Aug. 19	Sun.	Bay Shore YC Invitational III	1245			BSYC	Bay Shore	TBA
Aug. 22	Wed.	W. Twilight Fall II	1900	NoSp.	2,4	G. Schwarting	Bay Shore	A-I
Aug. 23	Thur.	Babylon Twilight Fall II	1900	Reg.	2,4	D. Pearsall	Babylon	A-I
Aug. 25	Sat.	COMMODORE'S CUP	1300	Expd.	7,9	L. Christiansen	Nicoll Bay	A-H
Aug. 26	Sun.	LADIES' RACE	1300	NoSp.	1,9,11	G. Keenan	Bay Shore	A-I
Aug. 29	Wed.	W. Twilight Fall III	1900	NoSp.	2,4	B. Schwartz	Bay Shore	A-I
Aug. 30	Thur.	Babylon Twilight Fall III	1900	Reg.	2,4	T. O'Connell	Babylon	A-I

SOUTH BAY CRUISING CLUB 1990 SOCIAL AND CRUISING SCHEDULE

Date	Day	Event	Location	Vessel	Captain
Sept. 1	Sat.	Rendezvous	Sayville YC	Yellowbird	M. Smith
Sept. 8	Sat.	Moriches Bay Rendezvous	Smith's Point	Coppelia	J. Steinert
Sept. 15	Sat.	Rendezvous	Davis Park	Decatur II	A. Lovito
Sept. 19	Wed.	Atlantic City	Robert Moses Basin	Never Again II	R. Columbo
Sept. 22	Sat.	Rendezvous	Unqua Heading	Stardust	J. Ferguson
Sept. 29	Sat.	Family Weekend	Watch Hill	First Light	L. Lowy
Oct. 6	Sat.	Rendezvous	Great River	Flying Cloud	E. Kissenberth
Oct. 13	Sat.	Pina Colada Rendezvous	Atlantique	Jubilation	J. Petroske
Oct. 20	Sat.	South of the Border Rendezvous	Great River	Wanderlaar	J. Schwartz
Dec. 16	Sun.	Christmas Cocktail Party	Dowling College, Oakdale	Hospitality Committee	



SOUTH BAY CRUISING CLUB 1990 RACE SCHEDULE

Date	Day	Event	Warn- ing Gun	Start- ing Seq.	Notes	Race Chairman	Starting Location	Course
Sept. 1	Sat.	Sayville YC Invit. I	1300	SYC	2,11	SYC	Sayville	SYC
Sept. 2	Sun.	Sayville YC Invit. II	1300	SYC	2,11	SYC	Sayville	SYC
Sept. 5	Wed.	W. Twilight Wrap-Up I	1900	NoSp.	2,4	S. Penny	Bay Shore	A-I
Sept. 6	Thur.	Babylon Twilight Wrap-Up I	1900	NoSp.	2,4	B. Nierenberg	Babylon	A-I
Sept. 8	Sat.	FOULKE TROPHY	1800	Expd.	6,7, 9,10	R. VanTassel	Bay Shore	K
Sept. 12	Wed.	W. Twilight Wrap-Up II	1900	NoSp.	2,4	J. Ryan	Bay Shore	A-I
Sept. 13	Thur.	Babylon Twilight Wrap-Up II	1900	NoSp.	2,4	E. Turner	Babylon	A-I
Sept. 15	Sat.	NY Governor's Cup	TBA	Special		NYGC	Battery Park	
Sept. 19	Wed.	W. Twilight Wrap-Up III	1900	NoSp.	2,4	M. Goodman	Bay Shore	A-I
Sept. 20	Thur.	Babylon Twilight Wrap-Up III	1900	NoSp.	2,4	J. Davis	Babylon	A-I
Sept. 22	Sat.	Babylon YC Invit.	1300	Reg.	10,11	BYC	Babylon	A-I
Sept. 23	Sun.	Babylon Mayor's Cup	1300	TBA		LIYC	Babylon	TBA
Sept. 30	Sun.	Fall Family Race	TBA	NoSp.	1,11	J. Rielly	Watch Hill	B
Oct. 7	Sun.	Discoverer's Race	1300	Expd.	7	D. Davies	Bay Shore	AA-I
Oct. 13	Sat.	Last Chance	1100	Expd.	7	R. Columbo	Bay Shore	A-I
Nov. 24	Sat.	Turkey Race	1200	Reg.	10,11	J. Reichel	Babylon	A-I
Jan. 1	Tues.	New Year's Race	1200	NoSp.	10,11	TBA	Babylon	A-I

TBA - To be announced.

NOTES TO RACING SCHEDULE

1. See INSTRUCTIONS III.D.
2. See INSTRUCTIONS III.C.
3. Time Limit 1230 for AM race.
4. Time Limit 2230.
5. Time Limit 1900.
6. No Time Limit.
7. Counts toward season class championship.
9. Winners in races shown in ALL CAPS qualify for Perpetual Trophies. See INSTRUCTIONS IV.F.
10. Finish at Babylon Yacht Club dock.
11. No SBCC racing fee required.
12. GSBYRA INVITATIONAL - requires payment of entry fee to GSBYRA. (See GSBYRA year-book for entry form).
13. Start of second race to be announced by Committee Boat.
15. To be scored separately for Race Week Wind-Up and for series race.

SOUTH BAY CRUISING CLUB

NOTES TO 1990 SCHEDULES

NOTES TO SOCIAL AND CRUISING SCHEDULE

1. Refer to Cruising Guide for directions to Rendezvous location.
2. Details to be published in "From the Masthead" or otherwise furnished at a later date.

AWARDS:

Cruising Award — This award is given for cruising off the bay as part of the club's cruises. To qualify, a yacht must anchor or tie up with the fleet for at least seven (7) nights (50%). The Cruise Captains will submit a list of the yachts eligible for this award based upon their records.

Great River Week Award is given for attending Great River Week. A yacht must be present in Great River or designated harbor Monday through Friday in order to earn this award.

The Rendezvous Awards are made at the Fleet Captain's discretion to boats that attend a minimum number of rendezvous.

Green Water Award for a cruise of greater distance and duration than the official cruises.

Blue Water Award is made only as recognition for an extended cruise off soundings. A select committee, along with the Fleet Captain, will review candidates and make this award only when they deem the cruise to be an outstanding achievement.

Blue Water Awards:

- 1952 — Jack Young (Doc Hamlin special award)
- 1953 — R.W. Bennett
- 1964 — Art Flynn
- 1965 — Stuart Baldwin (Ed Macy special award)
- 1966 — Ed Macy
- 1967 — Ed Forsyth
- 1968 — Jack Young (Don Streit & Ed Ricketts special awards)
- 1969 — Chet Phipps
- 1972 — Arthur Sternberg, M.D.
- 1973 — Bill Milligan
- 1979 — Bob Wissman
- 1980 — Edgar Sabbeth
- 1987 — Russ Colombo

Green Water Awards:

- 1987 — Harry Wilburger
- 1989 — Roger Goodwin



SBCC RACING PROGRAM AND INSTRUCTIONS

I. QUALIFYING TO RACE

All properly equipped sailboats owned or chartered by SBCC members in good standing are eligible and encouraged to participate in Club races provided they have requested and received a SBCC handicap and otherwise comply with the standards set forth below.

A. INTENT OF PROGRAM

It is the intent of the SBCC that all sailboats racing in club sponsored events shall contain cruising accommodations with an enclosed cabin. It is recognized that these accommodations will vary according to the type and size of the boat. However, all sailboats are assumed to comply with the manufacturers' standard hull and accommodation plans. It is the responsibility of the owner of any vessel which has been modified or is of unique design to inform the handicap committee of the irregularity prior to racing. Such vessel will then be reviewed by the handicap committee and rated accordingly.

The SBCC handicap system assumes that a sailboat is equipped to race. It does not attempt to rate a partially equipped boat or a boat which differs from others in its class, in that it is unusually light or heavy, out of balance or has unusual windage (as from a dinghy on davits).

B. EQUIPMENT

As a minimum all cruising sailboats participating in a SBCC sanctioned club race *must* have the following equipment on board and in operable condition:

- a. All equipment required for the participating vessel to comply with Federal, State, and Local requirements.
- b. The following additional items:
 1. Bunks, securely installed.
 2. Toilet, securely installed or fitted bucket.
 3. Galley facilities.
 4. At least 2 gallons of potable water.
 5. Current copy of an approved SBCC handicap rating form.
 6. All spars including spinnaker and whisker poles marked in accordance with the rating form.
 7. Headsails of 130% LP or greater shall be measured and marked.
 8. An engine or auxiliary motor with fuel unless handicapped without same.
- c. It is strongly recommended that all sailboats participating in a SBCC sanctioned race on the Great South Bay comply with USYRU category 4 equipment requirements.
- d. Ocean Races and Races after sunset.
 1. It is strongly advised that additional safety equipment for these races include USYRU category 3 equipment requirements.
 2. It is strongly recommended that all sailboats participating in these events should be equipped with the following additional equipment:
 - a. VHF radio.
 - b. Auxiliary motor with adequate fuel.
 - c. Man overboard pole with strobe light.

SBCC RACING PROGRAM AND INSTRUCTIONS

C. INSPECTION POLICY AND PROCEDURES

As a condition precedent to racing in a SBCC sponsored or sanctioned event, all vessels are subject to inspection for compliance with the stated equipment requirements.

The SBCC measurer or designated assistants may conduct random inspections of all SBCC sailboats with current SBCC handicaps. These inspections will be conducted with courtesy and as efficiently as possible with permission of the owner or their representative.

If in the opinion of the measurer or designated assistant, the inspected sailboat does not have on board either the required equipment or comply with the intent of the SBCC racing program, the measurer will file a formal protest with the Protest Committee. Boats found not to be in compliance by the protest committee will be subject to disqualification.

D. HANDICAPS

The SBCC fleet includes many different types of sailboats. In order to make race participation attractive to as many members as possible, SBCC Handicap racing is offered. Under this system, every yacht in the fleet upon request to the Handicap Chairman is given a SBCC Rating based on its maximum speed potential.

The SBCC Handicap System rates each yacht according to its maximum speed potential, thereby encouraging each skipper to get the best performance from his yacht.

Maximum speed potential is established for each yacht through:

- statistical analysis of race data for consistently well-sailed boats of similar design
- comparison with data from other racing fleets'
- speed-trending data from past performances

Under the SBCC Handicap System all yachts of different design will have distinctive maximum speed characteristics from which individual handicaps are derived. Fine tuning factors are applied to yachts of the same design to account for differences in rig, prop type, sail complement, etc.

Each racing skipper is obliged to contact the Handicap Chairman in advance of his first race under the following conditions:

- A particular yacht is to be raced in the SBCC fleet for the first time.
- The skipper has raced another yacht bearing the same sail number during the season.
- The sail complement has been changed.
- The basic design of the yacht is modified in any way which could affect its speed potential.

E. HANDICAP APPEAL

A skipper who believes his yacht's handicap might deserve correction may request a handicap review by submitting a written request to the Handicap Committee stating the reasons he believes a review is in order.

F. SBCC HANDICAP CLASSES

Three classes, Spinnaker, Non-Spinnaker, and Cruising are scored under the SBCC Handicap System.

SBCC RACING PROGRAM AND INSTRUCTIONS

—Skippers electing to race in the Spinnaker class may use their full sail complement, and any sail combination consistent with USYRU racing rules or special race instructions.

—It is the intent of the Non-Spinnaker class to restrict sail inventory use to only those sails that can be correctly flown on all points of sail. In the Non-Spinnaker class, only one headsail (either a jib or genoa of a minimum of 3 ounce cloth) may be flown in the foretriangle at any one time. Yachts handicapped as having permanent double head rigs will be permitted to fly their staysail when racing Non-Spinnaker.

—The Cruising class, a modified Non-Spinnaker class, will be restricted by the rules of Non-Spinnaker and be open to the skippers who believe their boats are in the "cruising state."

—Members may change classes as often as they desire, as long as it is done before the first warning signal.

G. RACING NUMBERS

Racing numbers, either USYRU or SBCC, are required on mainsails, spinnakers and overlapping (LP greater than 130% J) headsails, in accordance with current USYRU rules.

H. MEMBERSHIP RESTRICTION

No boat shall race in a SBCC sponsored event unless commanded by a SBCC member or associate member. Invitationals sponsored by other organizations are exempted.

II. RACING RULES

Racing rules of the United States Yacht Racing Union (USYRU) shall be observed except as otherwise specified in these instructions. Burgees and other flags may be flown when racing. Government navigation buoys not stated as being marks of the course may be disregarded at the discretion of the skipper.

The Inland Rules will replace Part IV of the Racing Rules between the hours of sunset and sunrise. All required lights must be shown.

The 720 rule, Appendix 3.1 of the USYRU racing rules, shall apply to all SBCC races.

III. RACE PROGRAM

A. RACE SCHEDULE

SBCC sponsors numerous races and participates in various invitationals as set forth in the 1990 RACE SCHEDULE.

B. COURSES

Courses used for SBCC races and some invitationals are set forth on the pages following these instructions. They are grouped by starting area as follows:

Babylon	Nicoll Bay	Watch Hill
Bay Shore	Ocean	

For each of these areas, a variety of courses is described below, each bearing a distinguished letter. The choice of course available to the Race Committee on any

SBCC RACING PROGRAM AND INSTRUCTIONS

given day is shown in the Race Schedule. The Course selected will be signaled from the Committee Boat by the appropriate letter code flag. (Letters A through K may be used).

Any course can be reversed by code Flag "R" or shortened by code flag "S" as described in Part VI B.

C. SERIES RACES

Babylon Yacht Club July Invitational Series

This is a three-race series sailed over a two day period. The courses, starting sequence, and other race instructions will be provided by the Babylon Yacht Club and handed out by the committee boat on station prior to the first race.

Great River Week

This is a four-race series. It will be scored on the basis of a yacht's best three races. Racers traditionally join the Great River Week raft up after each race. To be scored for the fourth race of the series (Race Week Wind-up), a yacht must have participated (started or served as committee boat) in at least two of the other races comprising the series. However, all yachts participating in the Race Week Wind-Up will be scored for the Saturday day race. A special Cruising class will be added for all four races.

GSBYRA Race Week

This is a four race series and a race fee is required.

Sayville Yacht Club Invitational Series

This is a two race series sailed over two days. See SYC START SEQ. for more information or the SYC Race Committee.

SBCC Class Championship Series

This is an over-all season series based on the scoring of selected races. See Part IV B.

Tune-up Series

This is a two-race series with no throw-outs. To emphasize tuning, no trophies will be awarded.

Twilight Series

These are a three race series. They will be scored on the basis of a yacht's best two races, except committee boat as noted in Part IV D. These series will alternate between regular start and non-spinnaker. The final Wrap-up series will be non-spinnaker.

D. SPECIAL RACES

BYC/SBCC Challenge: Babylon Yacht Club has challenged the SBCC. Each club will participate with an equal number of boats. This is a VOLUNTEERS ONLY race. We will use a lottery system from the volunteers to determine the six participants from our club.

Ladies' Race — A Non-Spinnaker race. Skipper must be a lady. The Patricia A. Kelly Trophy will be awarded to the yacht with best corrected time with an all girl crew. Yachts eligible for this trophy must compete in the ALL GIRL category.

SBCC RACING PROGRAM AND INSTRUCTIONS

Race Week Wind-Up — This is a separate day race and also serves as the last race in the Great River Week series. This race will be double scored, once for those yachts having participated in at least two of the prior Great River Week series races, and scored again using all of the participating yachts to arrive at the standings for the Race Week Wind-Up and Class Championship points.

Single-Handed Creepstakes — Only skipper is allowed on boat during race. Two classes: 28 feet LOA and over; and under 28 feet LOA. Non-Spinnaker only.

West Island Race — Nicoll Bay course B may be sailed in either direction. Expanded start.

Watch Hill Family Race — A Non-Spinnaker race leaving from Watch Hill Sunday morning. Crews must sleep aboard their yacht Saturday night.

IV. RACE SCORING AND TROPHIES

A. SCORING METHOD

SBCC races will be scored using the Time on Distance Method. A yacht's time allowance is calculated by multiplying her SBCC handicap by the race course distance. The time allowance is then subtracted from the yacht's elapsed time, yielding corrected time. The yacht with the lowest corrected time is the winner.

Race results are available to each participating skipper shortly after each race and official results are printed periodically in the "Masthead."

B. CLASS CHAMPIONSHIP SERIES SCORING

Class Championships and trophies will be awarded annually for Spinnaker, Non-Spinnaker, and Cruising Class, to the yachts with the best scores, as determined below, in each class. Scoring will be based on the best six of seven races designated with note 7 in the Race Schedule. Only yachts finishing at least five of these races will be eligible for trophies. Points for these races are computed on the following basis: 1st place yacht receives points equal to the number of starters in the race plus $\frac{1}{4}$ point; 2nd place yacht receives $1\frac{1}{4}$ points less than the 1st place yacht; the 3rd place yacht receives $2\frac{1}{4}$ points less than the 1st place yacht, etc. A yacht that serves as committee boat for one race of any series will receive credit towards series qualifications for that race and points equal to its average percentage points of its other races.

C. OTHER SERIES SCORING

Points for each race will be awarded on the basis of $\frac{3}{4}$ -point for first, two points for second, three points for third, etc. DNF and WDR boats will receive one point more than the number of boats in that class that started in the series. DNS and DSQ boats will receive two points more than the number of boats in that class that started in the series.

A starter in any one race of the series will be considered to have started in all the races of the series. Series position will be determined by the total points accumulated by each yacht, in inverse order. When there is a tie on points between two or more yachts, the tie shall be broken in favor of the yacht or yachts with the most first places, and when the tie remains, the most second places and so on, if necessary, for such races as count for total points. If a tie still remains, it will be broken in favor of the boat which beat the other the last time they raced against each other, throwouts included.

SBCC RACING PROGRAM AND INSTRUCTION

D. SERIES SCORING FOR COMMITTEE BOATS

A yacht that serves as committee boat for one race of any series will receive credit towards series qualification for that race and points equal to the average of its finish positions in the other races of the series, DNS and DNF races included. This does not apply to the Class Championships.

E. RACE TROPHIES

Trophies for individual SBCC races (when not part of a series) will be awarded to each class, according to the following schedule:

Number of Starters	Trophies for
2 or 3	1st
4 through 6	1st and 2nd
7 through 14	1st, 2nd and 3rd
15 or more	1st, 2nd, 3rd and 4th

In SBCC series, the greatest number of starters in any race will govern the number of trophies awarded for that series. Only first place trophies will be awarded for the Class Championship Series.

F. PERPETUAL TROPHIES

Perpetual trophies are awarded for one year only. They are awarded to the yacht with the best corrected time based on the SBCC Handicap rule.

Each year the club awards seven perpetual trophies, as follows:

Commodore's Cup — Best corrected time in the Commodore's Cup race.

Foulke Trophy — Best corrected time in the Foulke Trophy race (night race).

Smith Trophy — Best corrected time in the Smith Trophy race.

Deale Trophy — Best corrected time in the West Island race.

Governor's Cup — Best total score for the Commodore's Cup, West Island and Foulke Trophy races. High Point Scoring System.

Patricia A. Kelly Trophy — Best corrected time in the Ladies' Race by a yacht with an all-girl crew. Additional trophies will be awarded to yachts with all-girl crews in accordance with the trophy schedules.

Cruising Club Crock — Best corrected time in the Around Long Island Regatta scored with the SBCC Handicap rule.

Keeper cups are given to winners of these trophies and their names are engraved on the perpetual trophy. It is the responsibility of the winner of the perpetual trophy to return it by November 1 to the Trophy Chairman for engraving of the following year's winner.

V. COMMITTEE BOAT ASSIGNMENTS

A. SERVING AS COMMITTEE

The SBCC depends upon the cooperation of all members. Being the Committee Boat for a race is an important responsibility. It is a job not to be taken lightly for it is the heart of a successful racing program. Reliable, timely and accurate performance is essential.

Race Chairmen are assigned by the Regatta Committee, and listed in the Race Schedule. *These assignments are obligatory.*

SBCC RACING PROGRAM AND INSTRUCTIONS

B. CHANGES

A Race Chairman may switch assignments with another Race Chairman provided that the Regatta Chairman is notified at least 24 hours before the race. Arranging such changes is the sole responsibility of the assigned skipper and does not relieve him or her of responsibility.

C. PENALTIES

Any Race Chairman who willfully fails to do his assignment shall not be scored in any SBCC race for a period of one year from the date of his scheduled committee boat assignment. As an alternative penalty, a Race Chairman who failed to do his race assignment for the first time in the racing season will be scored in SBCC races after payment of a \$100.00 fine which shall go to the SBCC General Fund.

VI. STARTING LINE PROCEDURES AND RULES

A. CLASS STREAMERS

Racing yachts are required to fly streamers from their standing backstays or the leach of their mainsail. Streamers should measure 4"x18".

Creepstakes		Ladies Race	
Class	Color	Class	Color
LOA 28 ft and over	Blue	Mixed Crew	Blue
LOA under 28 ft	Yellow	All Girl	Yellow

All Other Races	
Class	Color
Spinnaker	Blue
No-Spin	Yellow
Cruising	White

Failure to display the appropriate streamer may be considered grounds for disqualification.

B. CODE SIGNALS

Code flags A through K are used to designate courses (see course instructions). Code flags below apply to all SBCC-conducted races:

- L — Come within hailing distance for instructions.
 - M — ROUND or pass the object displaying this signal instead of the mark it replaces.
 - N — ABANDONMENT, race called off (accompanied by three guns).
 - R — Sail the designated course in the REVERSE direction, Leave all marks to the opposite hand.
 - S — Sail the SHORT course prescribed in the course instructions. When flown after the start (accompanied by two guns), finish between the committee boat and the nearby mark of the course.
 - T — Sail the designated course TWICE around.
- Answering Pennant** — POSTPONEMENT signal (accompanied by two guns). Starts postponed fifteen minutes. Warning signal will be made 1 minute after Answering Pennant is lowered.
- 1st Repeater** — GENERAL RECALL signal

SBCC RACING PROGRAM AND INSTRUCTIONS

C. STARTING

Signals will be made at five minute intervals with each signal lowered one minute before the hoisting of the next. The visual signal governs; the gun merely calls attention to it. A red signal will be visible until one minute before the warning signal.

D. STARTING SEQUENCE

Abbreviations:

warn - warning signal	Sp - Spinnaker Class
prep - preparatory signal	NS - Non-spinnaker Class
S/ - start signal	CRU - Cruising Class

Time	Shape	Regular	No-Spin	SYC	Expanded
:00	White	Warn	Warn	Warn	Warn
:05	Blue	Prep	Prep	Prep	Prep
:10	Red	S/Sp	S/NS	S/Sp	S/Sp
:15	White	Prep		Prep	Prep
:20	Blue	S/NS		S/NS	S/NS
:25	Red			Prep	Prep
:30	White			S/Cat	S/Cru

Time	Shape	Creepstakes	Ladies
:00	White	Warn	Warn
:05	Blue	Prep	Prep
:10	Red	S/28 + LOA	S/Mixed
:15	White	Prep	Prep
:20	Blue	S/Under 30LOA	S/All Girl

When, after a starting signal, all the yachts of the class or classes involved have properly started, the Race Committee will, if practicable, announce "all clear."

E. ANTI-BARGING MARK

The committee boat may use an "anti-barging mark." If this mark is used racers shall not pass through the line formed by the anti-barging mark and the committee boat at any time — even while "starting." The penalty for infringing on this restricted line (at any time) or for touching (while starting) the anti-barging mark, is disqualification. The anti-barging mark does not change the starting line. The starting line is determined by the "X" mark (or buoy) and the white line marker on the committee boat.

F. STARTING LINE ETIQUETTE

Racing skippers are reminded to stay clear of the starting line until the Preparatory Signal for their class. *Classes not starting are to remain clear of all yachts in the division before them.* Failure to do so may result in disqualification.

The Preparatory Signal for each class is given five minutes prior to the starting signal. Yachts starting with the wrong class may be disqualified.

Skipper electing to change class after arriving in the starting area (but before the warning signal) must notify the race committee of that change.

SBCC RACING PROGRAM AND INSTRUCTIONS

G. RECALLS

The Race Committee will attempt to sound one blast of a horn or whistle and announce the sail number of each yacht starting prematurely. Near by yachts are requested to pass the hail. The onus of making a fair start lies on each yacht, and failure to hear or heed a recall will not prevent the premature starter from being penalized. Responsibility for determining compliance with the rules rests with the Race Committee. Yachts making an improper start will be penalized by having one-half hour added to their elapsed time, whether or not they have been notified.

General Recall: If there should be a number of unidentified premature starters, or if an error is made in the starting procedure such as significant inaccuracy in the interval between signals, the Race Committee will make the General Recall signal. The General Recall signal is the First Repeater code flag accompanied by two guns. The starting sequence begins with the recalled classes Preparatory signal.

H. VHF COMMUNICATIONS

VHF radio communications may be maintained during a race utilizing channel 72 for communication. Radio communications may be utilized to relay information on unusual situations during races such as postponements, recalls, withdrawals, etc. However, Race Committees are not required to use radio. Racers should **not** communicate with the Race Committee from the time of the Warning gun to the time of the last class start.

VII. TIME LIMIT

Regardless of time of start, the time limit for a boat in the first class to finish will expire at 1800 except as stated in the notes to the Racing Schedule.

Time limit for all classes starting after the first class will be extended so as to allow all classes to have the same amount of racing time. If any yacht finishes within the time limit for her class, it is a race for her class. Yachts finishing after the committee boat has left its station should take their time and report it to the Race Committee as soon as possible.

VIII. PROTESTS

The SBCC Protest Committee operates under the Racing Rules of the USYRU, supplemented by published decisions of the USYRU Appeals Committee. In addition, it shall hear all protests arising from violation of the Inland Rules which replace Part IV of the USYRU rules between sunset and sunrise.

The Protest Committee will only entertain protests made in conformity to the USYRU rules including:

- Display of protest flag
- Notification of protested yacht
- Notification of Race Committee
- Submission of written protest within 72 hours
- Citation of rule or rules allegedly infringed

Protest must be addressed to the Chairman of the Protest Committee and hand-delivered or postmarked within 72 hours of the conclusion of the race in question.

Written protests for the Ocean Invitational must be submitted immediately after the race.

SBCC RACING PROGRAM AND INSTRUCTIONS

IX. SAFETY

The safety of a vessel and her crew is the sole and inescapable responsibility of the skipper, who must do his best to ensure that the yacht is fully found, thoroughly seaworthy, and manned by an experienced and physically-fit crew. He must be satisfied as to the soundness of hull, spars, rigging, sails and all gear. He must ensure that all safety equipment is properly maintained and stowed, and that the crewmembers know where it is kept and how it is to be used. He must have all safety equipment required by the U.S. Coast Guard and he should have the racing equipment suggested by the United States Yacht Racing Union (USYRU). The South Bay Cruising Club disclaims any liability for the seaworthy condition or operation of a yacht, the safety of its crew, or the absence of suitable safety equipment aboard a yacht, for which the owner has sole responsibility.

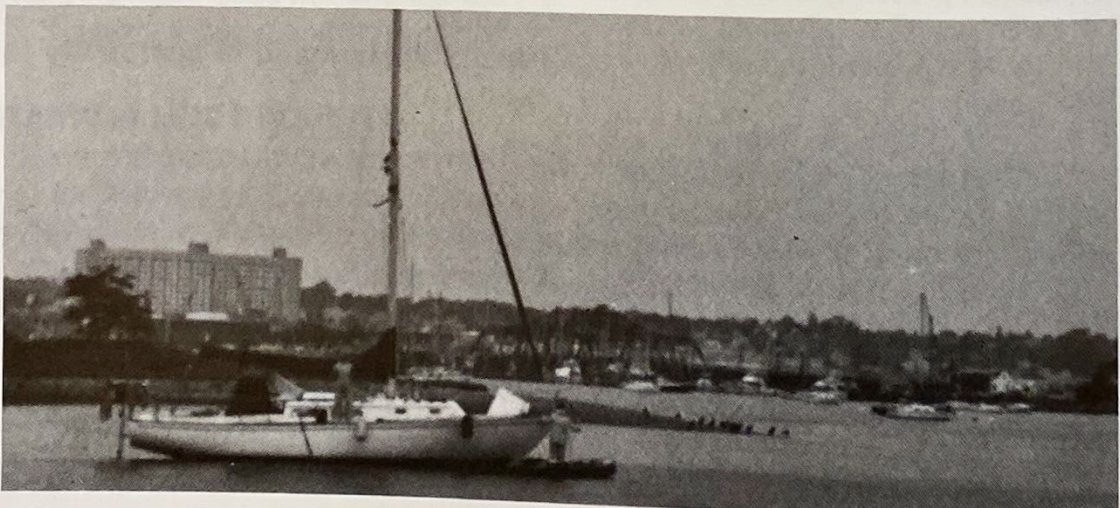
It is the exclusive responsibility of each skipper to decide whether or not to start, continue, or drop out of any event. The South Bay Cruising Club does not assume any liability for the decision of any participant. Because of the increased costs of all vessels and the tendency to litigate all accidents, whether liability exists or not, the Board of Governors of the South Bay Cruising Club recommend that all owners and skippers carry liability as well as hull insurance to protect all parties from the financial consequences of an accident.

For answers to questions regarding minimum U.S. Coast Guard equipment requirements please call the following:

Coast Guard Safety Hotline
weekdays between 8am and 4pm
1-800-368-5647

The USYRU Offshore Rating Council publication "Special Regulations Governing Minimum Equipment and Accommodations Standards" may be obtained by writing:

U.S.Y.R.U.
P.O. Box 209
Newport, RI 02840



1990 RACING PROGRAM — RACE COURSES

BABYLON COURSES

Course A: Start established by committee boat near Keith Canal; to Flasher No. 7 off Oak Island Channel, leaving it to port; through the center span of the Robert Moses Causeway to Flashing Green No. 11, leaving it to stbd; to Flashing Green No. 1 off Bayberry Point, leaving it to port; to Red and White (CG) Mo(A) in Great Cove, leaving it to port; to Nun No. 6, leaving it to stbd; through center span of the Causeway to finish line near Keith Canal. Course distance 9.45nm.

Course B: Start established by committee boat near Keith Canal; to Flasher No. 7 off Oak Island Channel, leaving it to port; through the center span of the Robert Moses Causeway to Nun No. 6, leaving it to port; return through center span of the Causeway to finish line off Keith Canal. Course distance 3.9 nm.

Course C: Start established by committee boat near Keith Canal; to Flasher No. 7 off Oak Island Channel, leaving it to port; through the center span of the Robert Moses Causeway to Nun No. 6, leaving it to port; return through center span of the Causeway to the starting line "X" mark, leaving it to port; to Flasher No. 7, leaving it to port; to finish line near Keith Canal. Course distance 5.64 nm.

Course D: Start established by committee boat off Willetts Creek; to Flasher No. 7 off Oak Island Channel, leaving it to port; through the center span of the Robert Moses Causeway to Nun No. 6, leaving it to port; return through the center span of the Causeway to finish line off Willetts Creek. Course distance 4.3 nm.

Course E. Start established by committee boat off Willetts Creek; to Flasher No. 7 off Oak Island Channel, leaving it to port through the center span of the Robert Moses Causeway to Nun No. 6, leaving it to port; return through the center span of the Causeway to the starting line "X" mark, leaving it to port; to Flasher No. 7, leaving it to port; to finish line off Willetts Creek. Course distance 6.0 nm.

Course F: Start established by committee boat off Willetts Creek; through the center span of the Robert Moses Causeway to Nun No. 6, leaving it to port; return through the center span of the Causeway to starting line "X" mark, leaving it to port; to Flasher No. 7 off Oak Island Channel, leaving it to stbd; to finish line off Willetts Creek. Course distance 5.1 nm.

Course G: Start established by committee boat near Keith Canal; to Flasher No. 7 off Oak Island Channel, leaving it to port; through the center span of the Robert Moses Causeway to Nun No. 6, leaving it to port; to Red and White (CG) Mo(A) in Great Cove, leaving it to port; return through the center span of the Causeway to finish line near Keith Canal. Course distance 7.71 nm.

Course H: Start established by committee boat near Keith Canal; through the center span of the Robert Moses Causeway to Nun No. 6, leaving it to port; return through the center span of the Causeway to the starting line "X" mark, leaving it to port; to Flasher No. 7 off Oak Island Channel, leaving it to stbd., to finish line near Keith Canal. Course distance 3.38 nm.

Course I: Start established by committee boat near Keith Canal; through the center span of the Robert Moses Causeway to Flashing Green No. 11 leaving it to stbd; to flashing Green No. 1 off Bayberry Point, leaving it to port; to Red and White (CG) Mo(A) in Great Cove, leaving it to port; to Nun No. 6 leaving it to stbd; through center span of the Causeway to finish line near Keith Canal. Course distance 7.1 nm.

1990 RACING PROGRAM — RACE COURSES

BAY SHORE COURSES

Course A: Start established by committee boat $\frac{1}{3}$ mile off Brightwaters Canal; to Flashing Green No. 11 off West Channel, leaving it to port; to Flashing Green No. 1 off Bayberry Point, leaving it to port; to Red and White (CG) Mo(A) in Great Cove, leaving it to port; to Flashing Green No. 11 off West Channel, leaving it to stbd; to finish line off Brightwaters Canal. Course distance 5.2 nm.

Course B. Start established by committee boat $\frac{1}{3}$ mile off Brightwaters Canal; to Flashing Green No. 11 off West Channel, leaving it to port; to Flashing Green No. 1 off Bayberry Point, leaving it to port; return to finish line off Brightwaters Canal. Course distance 3.7 nm.

Course C: (Cannot be reversed for twilight start.) Start established by committee boat $\frac{1}{3}$ mile off Brightwaters Canal; to Nun No. 6 east of Robert Moses Causeway leaving it to port; to Flashing Green No. 11 leaving it to stbd; to Flashing Green No. 1 off Bayberry Point, leaving it to port; to finish line off Brightwaters Canal. Course distance 5.7 nm.

Course D: Start established by committee boat $\frac{1}{3}$ mile off Brightwaters Canal; to Flashing Green No. 11 off West Channel, leaving it to port; to Nun No. 2 in North Channel, leaving it to port; to finish line off Brightwaters Canal. Course distance 4.7 nm.

Course E: Start established by committee boat $\frac{1}{3}$ mile off Brightwaters Canal; through the center span of the Robert Moses Causeway to Flasher No. 7 off Oak Island Channel, leaving it to port; return through the Causeway to Flashing Green No. 11 off West Channel, leaving it to port; to Red and White (CG) Mo(A) in Great Cove, leaving it to port; to finish line off Brightwaters Canal. Course Distance 7.85 nm.

Course F: (Cannot be used for Twilights.) Start established by committee boat $\frac{1}{3}$ mile off Brightwaters Canal; to Nun No. 6 east of Robert Moses Causeway, leaving it to port; to Flashing Green No. 11, leaving it to stbd; to Flashing Green No. 1 off Bayberry Point, leaving it to stbd; to Nun No. 10 in West Channel, leaving it to stbd; to finish line off Brightwaters Canal. Course distance 6.77 nm.

Course G: Start established by committee boat $\frac{1}{3}$ mile off Brightwaters Canal; to Nun No. 6 east of Robert Moses Causeway, leaving it to port; return to starting line "X" mark leaving it to port; return to Nun No. 6, leaving it to port; to Flashing Green No. 11, leaving it to stbd; to Flashing Green No. 1 off Bayberry Point, leaving it to port; to finish line off Brightwaters Canal. Course distance 9.2 nm.

Course H: Start established by committee boat $\frac{1}{3}$ mile off Brightwaters Canal; to Flashing Red No. 4 off Nicoll Point, leaving it to stbd; to Nun No. 2 in North Channel, leaving it to port; to Nun No. 10 in West Channel, leaving it to stbd; to finish line off Brightwaters Canal. Course distance 10.7 nm.

Course I: Start established by committee boat $\frac{1}{3}$ mile off Brightwaters Canal; to Nun No. 10 in West Channel, leaving it to port; to Flashing Green No. 1 off Bayberry Point, leaving it to port; to finish line off Brightwaters Canal. Course distance 3.8 nm.

1990 RACING PROGRAM — RACE COURSES

Course K: Start established by committee boat $\frac{1}{3}$ mile off Brightwaters Canal; through the center span of the Robert Moses Causeway to Flasher No. 7 off Oak Island Channel, leaving it to port; return through the center span of the Causeway leaving Flashing Green No. 11 to stbd; to Flashing Green No. 1 off Bayberry Point, leaving it to stbd; to Flasher No. 31 off Blue Point, leaving it to port; return leaving Flashing Green No. 11 to port; through the center span of the Causeway to the finish line at the Babylon Yacht Club. (Not to be used as a rendezvous.) Course distance 29.4 nm.

NICOLL BAY COURSES

Course A: Start established by committee boat off Green Point; to Flashing Red No. 4 off Nicoll Point, leaving it to port; to Nun 30 mid bay off Green Point, leaving it to port; to finish line off Green Point. Course distance 5.66 nm.

Course B: Start established by committee boat near Nicoll Point; to Can No. 5 off Nicoll Point, leaving it to stbd; to Nun No. 2 in North Channel, leaving it to port; to Nun No. 10 off Bay Shore, leaving it to port; to Red and Black Quick Flasher off Saltaire, leaving it to port; to Flashing Red No. 8, leaving it to stbd; to Flashing Green No. 15 off Point o'Woods, leaving it to port; to finish line in Nicoll Bay. Course distance 14.5 nm.

For the West Island Race only, this course may be sailed in the opposite direction with all marks left on the opposite hand.

Course C: Start established by committee boat off Green Point; to Can No. 3 in Range Channel, leaving it to port; to Nun No. 30 mid bay off Green Point, leaving it to port; to finish line off Green Point. Course distance 5.98 nm.

Course D: Start established by committee boat near Nicoll Point; to Flashing Green No. 29 in Nicoll Bay, leaving it to stbd; to Flashing Red No. 4 off Nicoll Point, leaving it to stbd; to finish line near Nicoll Point. Course distance 4.53 nm.

Course E: Start established by committee boat off Green Point; to Flashing Red No. 4 off Nicoll Point, leaving it to port; to Flashing Green No. 29 in Nicoll Bay, leaving it to stbd; to Flashing Red No. 18 in East Channel, leaving it to stbd; to finish line off Green Point. Course distance 7.94 nm.

Course F: Start established by committee boat off Green Point; to Flashing Green No. 15 off Point o'Woods, leaving it to stbd; to Can no. 5 off Nicoll Point, leaving it to port; to Flashing Green No. 1 off Bayberry Point, leaving it to port; to Nun No. 10 in West Channel, leaving it to port; to Nun No. 2 in North Channel, leaving it to stbd; to Can No. 5 off Nicoll Point, leaving it to port; to finish line off Green Point. Course distance 16.82 nm.

Course G: Start established by committee boat off Green Point; to Flashing Red No. 4 off Nicoll Point, leaving it to port; to Flashing Green No. 29 in Nicoll Bay, leaving it to stbd; to Flashing Red No. 18 in East Channel, leaving it to stbd; to Nun No. 2 in North Channel, leaving it to stbd; to Can No. 5 off Nicoll Point, leaving it to port; to finish line off Green Point. Course distance 13.79 nm.

Course H: Start established by committee boat near Nicoll Point; to Flashing Green No. 29 in Nicoll Bay, leaving it to stbd; to Can No. 3 in Range Channel, leaving it to stbd; to finish line near Nicoll Point. Course distance 4.78 nm.

RACING PROGRAM — RACE COURSES

OCEAN COURSES

Ocean Course A: Start between committee boat and Red Whistle Buoy No. "4FI" off Fire Island Inlet; to Black and White Gong Buoy No. "J1" off Jones Inlet and return, leaving No. J1 to port. Course Distance: 26.5 nm.

Ocean Course B: Start between committee boat and Red Whistle Buoy No. "4FI" off Fire Island Inlet; to Nantucket Sea Lane White/Orange "NA" and return, leaving Buoy "NA" to port. Course distance: 22 nm.

Ocean Course C: Start between committee boat and Red Whistle Buoy No. "4FI" off Fire Island Inlet. Course description to be provided by the Regatta Committee prior to race. A numeral pennant (1-9) will be flown by the committee boat to denote particular "C" course. Course distance to be determined after placement of SBCC buoys.

Notes on Ocean Race:

1. Harbor start from Sore Thumb one hour prior to Warning Gun.
2. If adverse weather conditions necessitate cancellation of the Ocean Race the committee boat will signal abandonment at Sore Thumb one hour prior to the Warning Gun.
3. If the Ocean Race is abandoned, there will be a "Bay Race" if wind and weather conditions permit.
4. If the committee boat is unable to remain on station at the finish line, finishing yachts shall pass No. 4FI to port for course A or to starboard for Course B. Yachts shall record their own finish times when the buoy bears abeam of the stern of the yacht. Such finishing times shall be reported to the R/C. Observers may be stationed on the beach to verify finishing times.

Bay Race Course A: To Red and Black Quick Flasher off Saltaire; to Flashing Red No. 8, leaving it to starboard; to Flashing Green No. 15 off Point o'Woods; to Can No. 5 off Nicoll Point; to finish line between committee boat and Nun No. 2 in North Channel. Leave all marks except No. 8 to port. Course distance depending on start locale.

Bay Race Course B: To Red and Black Quick Flasher off Saltaire, leaving it to port; to Nun No. 10 off Bay Shore, leaving it to starboard; to Can No. 3 off Heckscher Park, leaving it to port; to finish line between committee boat and Flashing Green No. 11 off Brightwaters. Course distance depending on start locale.

WATCH HILL COURSES

Course A: Start in vicinity of North end of channel to Watch Hill; to Nun No. 2 in North Channel, leaving it to port; to finish at or near Nun 10 at the entrance to the West Channel. Distance: 10.1 nm.

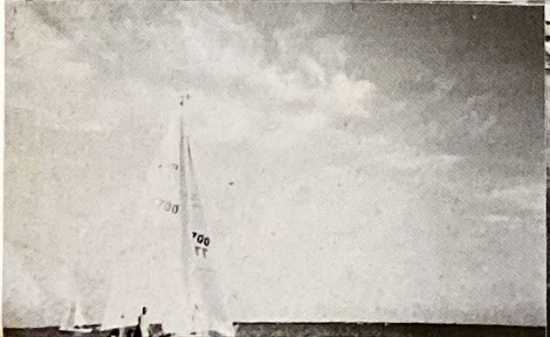
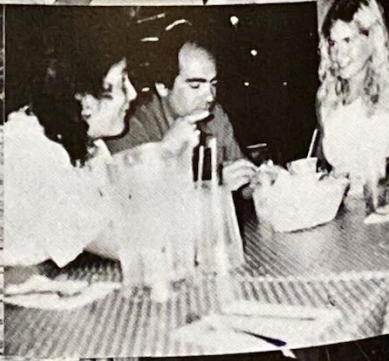
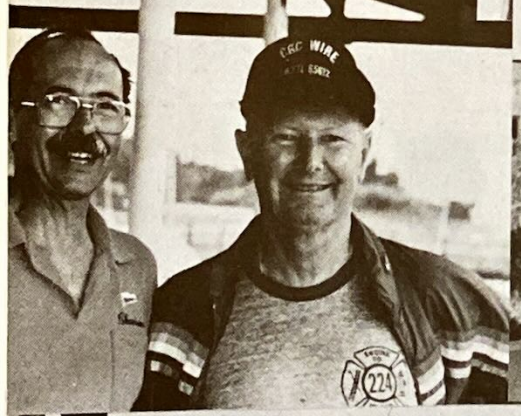
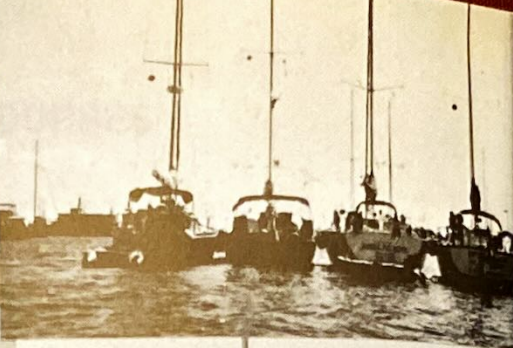
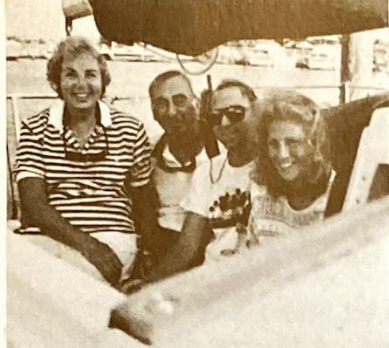
Course B: Start in vicinity of North end of channel to Watch Hill; to Flashing Green No. 29 in Nicoll Bay leaving it to port; to Flashing Red No. 18 in East Channel leaving it to starboard; to the finish line in the vicinity of Can No. 5 off Nicoll Point. Course distance: 7.2 nm.

S.B.C.C. SHIPS STORE

The Storekeeper has the following items available, to members, at the prices indicated. If you wish to purchase any of these items, please call Barbara Connor at 665-7266.

Burgee	\$10.00
Hats	5.00
Decal	1.00
Necktie	12.00
Cruising Guide	3.00





THE YEAR IN REVIEW

ONE WEEK CRUISE 1989 — From the logs of the *Flying Cloud* and *Golden Days*.

SUNDAY, July 16th a storm hit the area around the Great River and kept quite a few of our skippers busy during the night.

The new day brought out the sun and blue skies with brisk north easterly winds. Just perfect for sailing to our first destination. Most boats put a reef in their main but about the midway point full sails were out and we proceeded at a good pace to Watch Hill under the leadership of Commodore Don Zimmer.

Watch Hill was enjoyed by all. Time was spent on the beach, visiting old friends and meeting new members. Happy hours (some of them extending into late night) were plentiful and nourishing.

TUESDAY, we sailed to Atlantique where a lot of activities took place: a great picnic where everybody joined in; activities for the children on the cruise like painting and kite flying; accordeonists Marion & Roy entertained us with select music; a sing-along that was loud and happy and not completely off-key.

Atlantique proved to be so popular that about a third of the boats on the one week cruise decided to stay there. The cruise split up at Atlantique. Under the leadership of Mitch Silbert five vessels sailed east with a favorable southwest wind to Barrett Beach. These vessels were *Morika*, *Me-N-Thee*, *Enchanted*, *Magic* (Finkle) and *Golden Days*.

On WEDNESDAY, July 19th the rest of the fleet proceeded to Hemlock Cove. Cap-tree Island Bridge opened exactly at 1 P.M., as promised, and all boats passed it without incident. We had to motor all the way.

The boats anchored separately for safety reasons but dinghies ferried parties from boat to boat for Happy Hours and Games of Chance (like UNO and Rummicubes).

THURSDAY turned out to quite windy and rainy and a little bit gloomy. Once in a while the rain would stop and we would take a look outside. On one of these occasions a misplaced visitor from the south was sighted. A brown pelican was seen diving for fish in Hemlock Cove.

Next morning, the sky was still grey and the wind was still strong, but the rain had ended. We lifted anchors at 9:45 A.M. and proceeded via the Lindenhurst Channel, under the Robert Moses Bridge, the Dickerson Channel to the R.M. Boat Basin.

We had fantastic sailing all the way. Rev. Parker on *Charisma* managed to stay in the lead at all times. Father Langley with a smaller draft on his boat and a lot of help from a "Higher Authority" took shortcuts where other boats would have been aground. We were happy to have had Rev. Parker and Father Langley with us on this trip. Nothing could go wrong, go wrong, go wrong . . . just kidding, nothing went wrong this day.

SATURDAY, July 22, was the final day of the one-week cruise and everybody went in different directions. Father Langley said goodbye here and Reverend Parker had to sail back to Babylon to unload his crew. In the end, a solitaire *Flying Cloud*, flying an oversized burgee, took off towards the Great River via Atlantique and the Range Channel.

To our great surprise we were hailed and later joined by *Golden Days* off Atlantique. We had a very nice sail to the River. The day was nice and warm and light southwest winds took us to our destination. A regatta of hobie cats was in progress off Heckscher State Park and it made for a wonderful sight.

The customary Happy Hours on various vessels were especially interesting this day. Lots of Tall Tales were told to whoever wanted to listen.

The next day, Sunday, July 23, we again had beautiful weather. Blue skies and a warm southwest breeze. By noon most boats had departed for the home ports.

Down came the BIG BURGEE, the end to a wonderful week.

YEAR IN REVIEW (Cont'd.)

TWO WEEK CRUISE — 1989 From the Log of the *Hydrotherapy*

The 1989 two-week cruise commenced with a rendezvous on Friday night, August 4th, at Robert Moses Boat Basin. Most cruise participants left early Saturday morning for Block Island. *Stardust* and *Hydrotherapy* left Fire Island Inlet Saturday afternoon for the overnight cruise to Block Island.

As of Sunday, August 6th, there were seventeen boats participating in the cruise. Those boats were: *Silhouette*, *Time-To*, *Rhapsody*, *Lady Barbara*, *Cymoril*, *Karma*, *Stardust*, *Quest*, *Yellowbird*, *Keriann*, *Jubliation*, *Summerwhim*, *Pursuant*, *Kariana*, *Melody*, *Magic* and *Hydrotherapy*.

Most members of the cruise sat down for dinner at one huge table at Ballard's on the evening of August 6th. Our lay day in Block was spent on mopeds, and the kids enjoyed the video arcade at Champlins.

Tuesday morning, August 8th, dawned with ten-knot breezes and clear skies. We cleared the Salt Pond entrance at approximately 7:50 a.m. and headed for Cuttyhunk. At Cuttyhunk, there was a cocktail party aboard the *Hydrotherapy* with lots of Gin and Irish Creme consumed.

After a leisurely motor on August 9th to Woods Hole, we rafted on the moorings of the Woods Hole Yacht Club and toured the town. Lucky participants were given a tour of both the smaller station Coast Guard boats at Station Woods Hole as well as the 110 foot Cutter stationed at Group Woods Hole Coast Guard Station. An exciting time was had by all.

On August 10th, we partook of the hospitality of the Beverly Yacht Club (the oldest yacht club in North America) in Marion, Massachusetts. There was a cocktail party aboard the *Lady Barbara* after dark. Some partygoers had a problem locating the party boat and spent hours motoring around the Harbor in an inflatable.

We departed Marion for New Bedford, Massachusetts, on Friday morning, August 11th. It was an extremely gray and blustery day, and we had a marvelous time tacking downwind, back and forth across Buzzard's Bay to Marion. There were several interesting things to do while touring the town, including visits to a whaling museum, a firemen's museum, a glass museum, a children's museum in nearby Dartmouth, and a country fair. After taking a lay day on August 12th to do all these things, we departed New Bedford on Sunday morning for Sachuest Cove. Upon arriving at Sachuest Cove on Sunday evening, we met up with a few cruise participants, who had not been with us in Marion and New Bedford, and compared some cruising notes. On Monday morning, we motored up the Sakonett River to Fall River, Massachusetts, where we moored in the shadow of the Battleship Massachusetts. We dingied to the dock and spent several hours touring the Battleship Massachusetts as well as the destroyer and submarine on display. We then walked to the Trolley Museum and the Titanic Museum and departed Fall River at about 3:30 in the afternoon for Newport.

After spending a fun eighteen hours in Newport (about all we could take), we departed Newport on Tuesday morning in a dense fog, which remained dense until we rounded Pt. Judith. We had a quick and uneventful motor from Pt. Judith to the entrance to Watch Hill, where we had an encounter of the crunching kind with a submerged rock. We spent the evening moored at Watch Hill where the kids rode the Merry-Go-Round, and we had dinner at the Watch Hill Inn.

The next morning we proceeded to Stonington on schedule where our boat was hauled by the wonderful crew at Dodson's Boatyard.

YEAR IN REVIEW (Cont'd.)

At that point, the cruise essentially broke up for the trip home. Several boats proceeded to Montauk and then to home via Shinnecock and Moriches Inlets. Other boats proceeded down Long Island Sound through New York Harbor and home via Jones and Fire Island Inlets. We took a two-week reststop in Stonington and returned home via Block Island over Labor Day weekend.

This year's cruise was an interesting contrast to last year's cruise where the boats all stayed together and stuck to a rigid schedule (necessitated by the nature of cruising on the Hudson River). Boats came and went with regularity, this cruise, disappearing for a couple of days and showing up for a few days only to disappear for another couple of days. It was an enjoyable and exciting two weeks.

1989 RACING YEAR IN REVIEW

by Jim Ryan and Jim Reichel

Jim Ryan — Although our season officially begins with the tune-ups the race most sailors are looking forward to that time of year is the Creepstakes. The Creepstakes is a single handed race which this year was changed to non-spinnaker only in the interest of safety. While Bill Grauer grumbled (he has flown a spinnaker most of the last few races), most others breathed a sigh of relief. This year the Creepstakes was won by Larry Becker on *True Love?* but it is interesting to note that third through ninth place were all decided by less than a minute.

This year we also added spinnaker races to our Wednesday and Thursday night series and found it to be a great success. It gave those who wanted to practice using their spinnakers the chance to use this sail more often and let those who wanted to race no-spinnaker race with other no-spinnaker sailors. Doug Davies raced his J-27 *Amethyst* in 8 out of the 10 twilight series and won all of them. In spite of this there were boats that were new to the twilight races that won trophies this year. Andy Peters on his Bristol 41 *Estelle* raced for the first time this year and placed in the first Wednesday night series.

July started with the West Island race which was a long light air race. There were 15 spinnaker boats competing along with 9 non-spinnaker boats and Frank Marinaccio on *Cherry II* won overall by great sailing and going the "right way." Race week started with light air forcing cancellation of the second race. This race was rescheduled and 2 races were run on Friday. There were 12 boats racing in the spinnaker class and by the end of Friday's racing only a point separated *Firewater II* and *Orion*. The Saturday race was a twice around course and *Orion* led *Firewater* the first time around but was beaten across the finish line and *Firewater* won the race week spinnaker class. Non-spinnaker class was won by Howard Hamstra on *Slim* and the cruising class was won by Bob Sheppard on *Magic*.

Our Twilight races were concluded on a foggy Thursday evening Babylon race. We were all treated to a great finish line courtesy of Jerry Keenan and John Davis. They had the committee boat lit up with Christmas lights and set off fireworks when the last boat finished.

The turkey race was truly a winter race with 20 to 30 knot winds blowing across a cold bay. *Silver Bullet* and *What Me Worry* were the only two boats to fly a spinnaker but *What Me Worry* had to drop out after one of the shrouds popped. Greg Schneller

YEAR IN REVIEW (Cont'd.)

on *Mirage* won the non-spin race which had nine starters.

Normally the last taste of racing for the diehards is the New Year's Day race but this year the bay was frozen solid. Sixteen of us did however sail up and down the canal on Tom O'Connell's C&C 25 *Lucky Bark III* to at least get the feeling that we had been out there.

Not surprisingly, *Firewater II* won the season championship in the spinnaker class and for the first time there was a tie for the championship in the non-spinnaker class. At the end of a season racing Bob VanTassel's *Quest* and Howard Hamstra's *Slim* were dead even so two trophies were awarded.

1989 was a great racing season and we look forward to an even better 1990 season. There are new people joining the racing each year and in 1990 all club members are eligible to race. The more participation we have the more fun we will all have.

Jim Reichel — From the Log of *Silver Bullet*

The 1989 racing season underwent a major renovation. New racing rules from USYRU went into effect in May, and new race courses were carefully developed to give a more equable racing program. New qualifying races for the season championship were established making it easier for more boats to compete. The cruising class was kept in hopes of further establishing racing among the hard core cruisers.

The season started early for the *Silver Bullet* crew. The excitement of racing a new boat and trying to learn all of the complex reactions that result whenever you do anything on a J boat made waiting for some high level racing excruciating. In late April, Doug Davies with his boat *Amethyst*, and the *Silver Bullet* went up to the North Shore to represent the SBCC in the American Spring Series. We figured the only way to learn to sail the boat was to push it hard from the first day. Our first mark roundings were with the 50 footer *Fujimo* yelling for room during a spinnaker drop, and crossing on starboard in front of the 80 foot maxi yacht *Congere*. When the top of your mast is below the first spreader of a big boat, and they start yelling, the adrenalin flows causing you to yell starboard even louder.

In May, the Creepstakes brought the reality of handicap racing. The J-27's finished first and second across the line but corrected out fourth and eighth in what appeared to be one of the tightest scored race of the season. From third place down to ninth place were all decided by less than a minute. The boat that won this event was barely seen when the first boats crossed, yet they knew if they could see him after the finish, they would lose to him, even on a four mile course.

June came in with good winds, and the *Silver Bullet* struggling on all the long bay courses. The Founder's Cup, the Smith Trophy and Twilight races all proved that we needed to learn how to sail faster or our sails were bad. We ordered a new Kevlar genoa. Also in June, a group of SBCC regulars known as "*Team Ailanthus*," headed by Bill Grauer, chartered a J-35 out of Newport, R.I. to do battle with the hot shot J-35 class during the Block Island Race Week. Bill Grauer, with his usual outstanding organization made sure we had a boat to race, a van for crew transportation to and from our large farmhouse on Block Island, and a plane to shuttle crew as needed for the races. The *Ailanthus* team did a respectable job sailing under difficult and light air conditions with an unknown boat.

July was the month we were waiting for, with the Stars and Strips Regatta, Great River Race Week, and the Around Long Island Regatta all taking place with days of

YEAR IN REVIEW (Cont'd.)

each other. The Stars and Stripes saw two SBCC boats competing head to head with other J-27's from the Tri-State Region. *Amethyst* took a uncontested first while the *Silver Bullet* struggled to hold onto its second place. We were disappointed with the lack of turn-out from the club in this race. Great River Race Week started out with the West Island Race and *Cherry II* winning the race by sailing the right direction (in the sometimes difficult to figure direction race). 15 spinnaker, 8 non-spinnaker and 1 cruising boat turned up for this outstanding event. During Race Week, the winds were less than desirable. Light airs and weird weather patterns caused the cancellation of race 2 and rescheduling for the next day. The week of racing was enjoyed by all and highlighted by the always memorable Great River Blast. The BYC-SBCC Challenge Cup was run for the second time in recent memory with the SBCC losing by a few points to the Babylon Yacht Club. We are now tied with the BYC. Our final race in July was the ALIR. Light winds at the start gave way to ferocious squalls at night on the first leg. Our 10 SBCC boats that entered all had stories to tell. The *Silver Bullet* fared well during the storms with our boatspeed averaging 12 to 14 knots for almost 2 hours. We received a new Kevlar 150% genoa just in time for this race and ripped the head off it within 24 hours. An expensive race for most of us. The SBCC again won a trophy for the largest number of starters from the same yacht club.

In August, the major racing battles occurred during the twilight races. Good turn-outs made for some outstanding racing and fun. Our crew was constantly changing but we found that sailing the *Silver Bullet* fast was getting easier. By the end of the twilights and the Foulke Trophy blow-out, the word from the crew was to get a new mainsail. Word was sent back to the crew that we were now saving the empty Coors Light beer cans to pay for the new main with the deposit money. By the end of the month we had an order placed for another sail.

September brought in some trying conditions for the night races. High winds, thick fog and heavy rains plagued most of these final races. The *Silver Bullet* seems to do better when the conditions are less than ideal, if only we could get more crew.

October was a bad month for us. Our racing season was cut short due to a port/starboard confrontation from another J-27. We were not at fault but this did not ease the pain when the insurance company and J-Boats wanted the boat hauled immediately for 6 weeks of extensive repairs. With our racing season all but over, we were forced to find other ways to survive the remaining weeks in the best part of the sailing season. Doug Davies and Brendan Brownyard raced their boats in the Manhasset Fall Series while some of the *Silver Bullet* crew watched from our crew positions on *R-Wave*, a 45 foot IOR offshore monster. We really missed racing on the *Silver Bullet* especially when *Amethyst* was winning.

November saw the *Silver Bullet* back on the South Shore waiting for the final race of the year, the Turkey Race. The boat seemed faster than ever with its new main and was being tested for Key West Race Week in January. It was decided to order a new spinnaker for the Turkey Race and go for an all-out drag race. On race day, the wind was 20-25 knots gusting to an occasional 30. The new chute was hoisted with apprehension, but the excitement of 13 knots of boatspeed turned it into fun. The turn-out was small due to the low tides and snow but still 11 boats showed up to finish the year out with a win.

The 1989 racing season was exciting as usual. Participation was slightly down but the caliber of the racing level was high. We are looking forward to an exciting new season in 1990 with high participation and meeting new club members in our travels. Racing on the Great South Bay is truly the best sailing to be found.

YEAR IN REVIEW (Cont'd.)

GREAT RIVER WEEK — From the Log of the *BROADBILL*

Great River Week, always a high point, stood out in every way this year. Fleet Captain Tom Gotard had everything planned and hosts Barbara and Dennis Conner did justice to their boat's namesake, that cheerful and omnipresent *Leprechaun*. Spreading their magical cheer, along with a bit of mischief, Barbara and Dennis proved tireless hosts for a week that will long be remembered.

Great River began to show a change on Friday and Saturday. Boats began arriving and rafts growing. By the time the sun was over the yard arm on Saturday, one hundred and nine SBCC burgees flew over the river with many of the boats flying their full dress colors. Rafts grew in all sizes, and camera buffs were in their glory. So began a week of recreation, exploring, visiting old friends, making new ones, and just relaxing.

Early Sunday morning, all manner of dinghies and inflatables assembled at the Snapper Inn for Father Langley's customary services on the lawn. Afterward, the little fleet rowed and motored to *Jubilation* and *Summer Whim* for a different observance, The Champagne Breakfast. Joan, Ed, Ann and Ron handed out a bottle for each club boat on the river as Chanteyman Ed Schecker and company sang and played to the procession of dinks arriving to receive their bottles of cheer. Greetings were exchanged in characteristic fashion between *Char-Lynn* and *Lady Barbara* while a seemingly endless and spellbinding array of nautical and natatorial feats were exhibited throughout the anchorage.

On Monday morning, Barbara and Dennis, who had made an early run to a doughnut shop, hosted breakfast aboard the *Leprechaun*. Afterwards, anchors were raised and sails set for Watch Hill with *Rhapsody* leading the fleet. Once at Watch Hill, Fran and Ed conducted lessons in Marlinspike seamanship while the Youth Activities Committee handed out twenty-three kites for a flying "contest."

On Tuesday morning the Youth Activities Committee was at it again, this time passing out scavenger hunt lists that sent the youngsters off and allowed the parents a couple of peaceful hours. After the scavenger hunt came the sand castle building contest and then the afternoon "Olympics on the Beach." After many trials with water balloons, buckets, and competitions in shallow water, everyone emerged a winner.

Most boats returned to Great River on Wednesday morning with race week and the river's many pleasures ahead. Racing and good times marked the next few days, and the Snapper Inn's lawn was abuzz each cocktail hour when race results were announced.

On Thursday, the docks and parking lot of the Snapper Inn filled for the "Mate's Night Out" dinner. Chanteyman Ed Schecker led the singing with his ever-expanding repertoire and troupe.

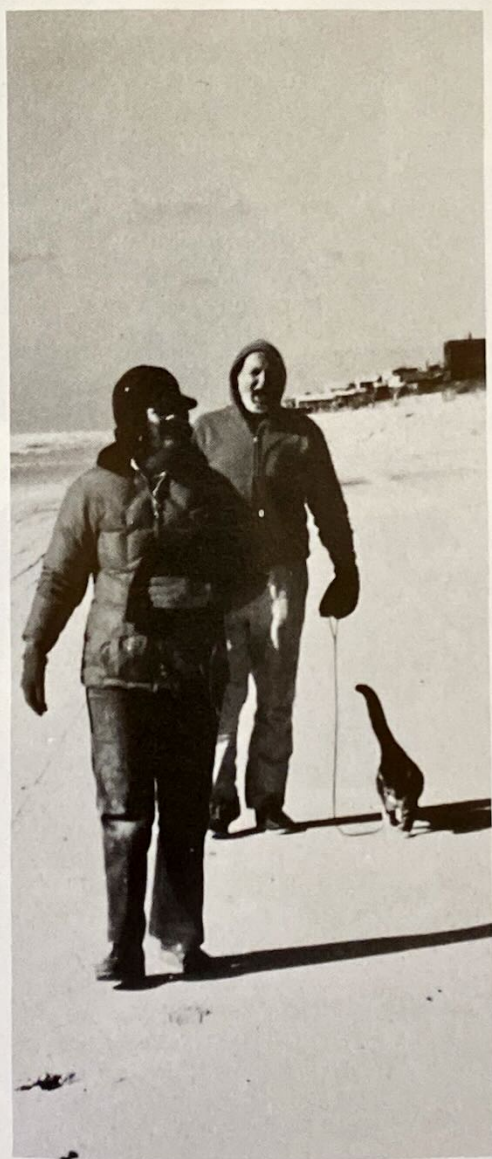
Smaller craft prevailed again on Friday as Barbara and Dennis led a dinghy train up the river to Connetquot State Park where they had arranged a guided tour of the park's nature trails and fish hatchery. Throughout the day more and more boats arrived in anticipation of the big weekend.

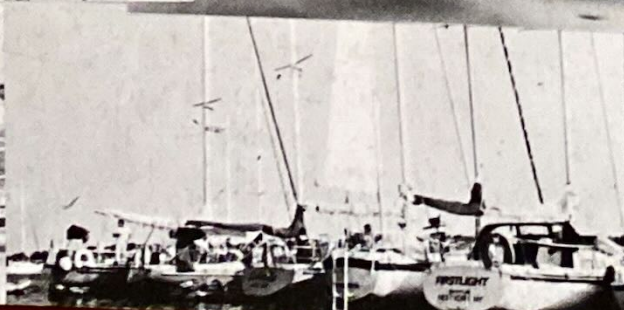
Excitement mounted Saturday morning when Rick LaTorre stood out as undisputed winner of the annual dinghy race. Good wishes and banter greeted the racers departing for the week's final race. By late afternoon, the river was as filled with SBCC masts and burgees as on the previous Saturday, and all hands were headed for Timber Point Park. The long-awaited Great River Blast had begun — that quintessential Cruising Club blowout replete with clams, lobsters, steak, corn, etc. etc. The Petroskes,

YEAR IN REVIEW (Cont'd.)

the Sanalitros, and all of their hospitality committee members were in full form making an arduous logistical challenge seem like great fun. Three hundred and sixty three dinners were served under the tent, and Chanteyman Schecker led a crowd outside singing late into the night. Parties continued on the rafts as well as on shore leaving the river a very quiet place on Sunday morning.

By Sunday afternoon the river began to appear a bit empty and lonely. Some boats were returning home while others were just beginning the Bay Cruise. Many thanks to all of the officers, committee heads, hosts, volunteers, and members who in the finest Cruising Club tradition made Great River Week what it was.







CRUISING AWARDS — 1989 SEASON

2 WEEK CRUISE — BUZZARDS BAY

Cruise Captains: Michael Kohl — *Hydrotherapy*
Jim Ferguson — *Stardust*

Time To	Rhapsody	Silhouette	Lady Barbara
Cymoril	Karma	Stardust	Quest
Yellowbird	Keriann	Jubilation	Summer Whim
Pursuant	Kariana	Melody	Magic
Hydrotherapy			

1 WEEK CRUISE

Cruise Captains: Jim Ferguson — *Stardust*
Andy Peters — *Estelle*

Tomorrow's Dream	Second Edition	Flying Cloud	Me-N-Thee
Lady Ann	Twenty Two Fifty	Last Fling	Wind Quest
Salt Heart	Charisma	Golden Days	Papillon
Utopia	Mistress	Rio	Quadrant
Emerald Seas	Black Petrel	Enchanted	
Magic			

GREAT RIVER WEEK

Big Joe	Black Petrel	Cherie	Ericasean
Flying Cloud	Leprechaun	Nifty	Summer Whim
Utopia	White Cloud	Whisper	Windsong
Zephyr	Jubilation		

RENDEZVOUS

<i>20 Rendezvous</i>	<i>19 Rendezvous</i>	<i>13 Rendezvous</i>	
Shoot'n The Breeze	Lady Barbara	Hydrotherapy	
<i>12 Rendezvous</i>	<i>10 Rendezvous</i>	<i>9 Rendezvous</i>	
Tranquilizer	Flying Cloud	Salt Heart	
		Silhouette	
		Yellowbird	
	<i>8 Rendezvous</i>		
	Leprechaun		
	<i>7 Rendezvous</i>		
Aquaries III	Decatur II	Zigeuner	
	<i>6 Rendezvous</i>		
Climax	Carefree	Karma	
	<i>5 Rendezvous</i>		
Bagheera	Broadbill	Golden Days	Keriann
Rhapsody	Stardust	Time To	Wind Call
	<i>4 Rendezvous</i>		
Blithe Spirit	First Light	Good Wind	Jubilation
Me-N-Thee	Pursuant	Quest	Rio
Sea Sprite	Sea Witch	Soverain	Thunder Cloud
Utopia	Wandelaar		
	<i>3 Rendezvous</i>		
Eagle	Fang	Forever in Debt	Gypsy Rose
Hey Ad	Jean's Starr	Kariana	Lorna Doone
Magic	Mahalo	Moet	Rakamah
Salty C's	Summer Whim	Wanderlust	Wind Song

SBCC PERPETUAL TROPHIES

SMITH TROPHY

1953	Cutty Sark	Dud Norton	1971	Falcon	A Heckel
1954	Reverie	J. Young	1972	Merry Ann	W. Cook
1955	Lorelei	B. Lawrence	1973	Loon	L. Orr
1956	Lorelei	B. Lawrence	1974	Sandpiper	R. Nehring
1957	Spindrift	B. Tarr	1976	Merry Ann	W. Cook
1958	Hispaniola	E. Poor	1977	Slim	H. Hamstra
1959	Three Sisters	F. Pallas	1978	Merry Ann	W. Cook
1960	Morning Star	H.G. Smith	1979	Magic	R. Sheppard
1961	Falcon	A. Heckel	1980	Heather	D. Davies
1962	Pegasus	J. Bruckner	1981	Honyak	J. Layton
1963	Jeanne	B. Hangarter	1982	Kiko	G. Baldwin III
1964	Syren	J. Worden	1983	Curlew	D. MacDonell III
1965	Falcon	A. Heckel	1984	Jeannie	L. Deutsch
1966	Fibre Tigre	W. Stone	1985	Curlew	D. MacDonell III
1967	Broadbill	B. Simonson	1986	Mirage	G. Schneller
1968	Ghost	R. Logan	1987	Amethyst	D. Davies
1969	Panaceo	S.J. Horman	1988	Firewater II	Baldwin/Crocker
1970	Orient Star	W. Casazza	1989	White Squall	J. Smith

BROADSIDE TROPHY

Ladies Day Race (First, All Girl Crew)

1966	Sea Rover	Nan Hanaway	1974	Banshee	Pat Kelly
1967	Lady Lou V	Grace Beinert	1975	Banshee	Pat Kelly
1968	Lady Lou V	Grace Beinert	1976	Liebchen	Jane Muchmore
1969	Tranquilizer	Sheila Daytz	1977	Summerwind	Charlotte Wissmann
1970	Banshee	Pat Kelly	1978	Firefly II	Ginny Smith
1971	Banshee	Pat Kelly	1979	Summerwind	Charlotte Wissmann
1972	Banshee	Pat Kelly	1980	Mandalay	Kathy Saxe
1973	Too Much	Jane Muchmore	1981	Banshee	Pat Kelly

SCHNUR TROPHY

1951	Judy	1963	Errant	1974	Valkyrie
1952	Cirrus	1964	Snookee	1975	Free Wind
1953	Joyce	1965	Bay Bee	1976	Valkyrie
1954	Triton	1966	Halcyon	1977	Argos
1955	Chiquita	1967	Chico	1978	'Glas Menagerie
1956	Moonshine	1968	Adelaide	1979	Strawberry Fields
1957	Chappy	1970	Sea Rover	1980	Thunder Cloud
1958	Sea Rover	1971	Jolly Jack	1981	Windswept
1959	Spindrift	1972	Hollandia	1982	Menger Cat
1961	Escape	1973	Warlock	1983	Lady Bug
1962	Sea Rover				

FOULKE TROPHY

1954	Lorelei	1967	Godspeed	1979	Warlock
1955	Spindrift	1968	Reverie	1980	Warlock
1956	Tranquil	1969	Merry Ann	1981	Warlock
1957	Tranquil	1970	Banshee	1982	Cygnat
1958	Spindrift	1971	Merry Ann	1983	Curlew
1959	Harpoon	1972	Bold Venture	1984	Dragon Fly
1961	Brandy	1973	Starward	1985	Blaze
1962	Wanderlust	1974	Unicorn	1986	Firewater II
1963	Jeanne	1975	Lena	1987	Amethyst
1964	Falcon	1976	Strawberry Fields	1988	Jacqueline II
1965	Nirvana	1977	Dawn Too	1989	Firewater II
1966	Fibre Tigre	1978	Ailanthus		

SBCC PERPETUAL TROPHIES

GOVERNOR'S CUP

1966	Lively Lady	B. Max	1979	Sunshine	V. Kind
1967	Godspeed	Edmund J. Neale, Jr.	1980	Aeolus	R. Graham
1968	Godspeed	Edmund J. Neale, Jr.	1981	Heather	D. Davies
1969	Merry Ann	W. Cook	1982	Cygnat	R. Finta
1970	Orient Star	W. Casazza	1983	Aeolus	R. Graham
1971	Merry Ann	W. Cook	1984	Ailanthus	W. Grauer
1972	Bold Venture	R. Horn	1985	Cherry Pi	F. Marinaccio
1973	Kandy Bar	W. Dwyer	1986	Blaze	R. LaBella
1974	Ghost	R. Logan	1987	Rhapsody	B. Nierenberg
1975	Chanson	G. Baldwin	1988	Orion	J. Ryan
1976	Loon	L. Orr	1989	Cherry Pi	F. Marinaccio
1977	Ghost	R. Logan			

DEALE TROPHY

1963	Melidi	C. Collis	1977	Ghost	R. Logan
1964	Decatur	B. Schafer	1978	Jacqueline II	R. Forman
1965	Gemini	J. Ruppe	1979	Sunshine	V. Kind
1966	Broadbill	W. Simonson	1980	Ailanthus	W. Grauer
1967	Windsong	A. Bertepelle	1981	Ailanthus	W. Grauer
1968	Gin	R. Seidenspinner	1982	Jacqueline II	R. Forman
1969	East of Schoddic	J. D. Keough	1983	Merry Ann	W. Cook
1970	Staryker	D. McPherson	1984	Ailanthus	W. Grauer
1971	Whisper	D. Brown	1985	Sunriser	H. Smith
1972	Leprechaun	H. Post	1986	Tachyon	D. Cameron
1973	Deliana	W. Symons	1987	True Love	L. Becker
1974	Sandpiper	R. Nehring	1988	Spirit	W. Titus
1975	Falcon	A. Heckel	1989	Cherry Pi	F. Marinaccio
1976	Lena	D. Stephani			

PATRICIA A. KELLY TROPHY

1982	Mandalay	Kathy Saxe	1986	Blue Thunder	Cary Pearsall
1983	Curlew	Cindy MacDonell	1987	Orion	Felicity Ryan
1984	Lucky Bark III	Susan O'Connell	1988	Lucky Bark III	Susan O'Connell
1985	Cherie	Olive Healy	1980	Catharsis	Margaret Christiansen

CRUISING CLUB CROCK

For Best Corrected Time in the Around Long Island Race

1979	Flighty Miss	H. Colleran	1985	Alchemist	B. Brownyard
1980	Merry Ann	W. Cook	1986	Jacqueline II	R. Forman
1981	Merry Ann	W. Cook	1987	Diane	R. Schwartz
1982	Merry Ann	W. Cook	1988	Wild Rover	J. Ferguson
1983	Force 10	R. Wissmann	1989	Jacqueline II	R. Forman
1984	Jacqueline II	R. Forman			

COMMODORE'S CUP

1967	Ark	1975	Jacqueline II	1983	Aeolus
1968	Nalani Kai	1976	Jacqueline II	1985	Firewater II
1969	Barcarolle	1977	Ghost	1986	Firewater II
1970	Orient Star	1978	Blaze	1987	Blue Thunder
1971	Merry Ann	1979	Blaze	1988	Merry Ann
1972	Willopeg	1980	Aeolus	1989	White Squall
1973	Chanson	1981	Sunriser		
1974	Sandpiper	1982	Cygnat		

SBCC TROPHIES — 1989 SEASON

PERPETUAL TROPHIES

Commodore's Cup — White Squall 934
Foulke Trophy — Firewater II 1457
Smith Trophy — White Squall 934
Deale Trophy — Cherry Pi 14423

Governor's Cup — Cherry Pi 14423
Patricia A. Kelly Trophy —
Catharsis 999
Cruising Club Crock — Jacqueline II 818

CLASS CHAMPIONSHIP

Spin—Firewater II 1457
No-Spin—Quest 24191, Slim 62

WESTERN TWILIGHT SUMMER SERIES

No-Spin (8)—Cherry Pi 14423
Merry Ann 220, Orion 1764

FOUNDER'S CUP RACE

Spin (7)—Cherry Pi 14423,
White Squall 934, True Love 1518
No-Spin (5)—Slim 62,
Antares 1113

BABYLON TWILIGHT SUMMER SERIES

Spin (3)—Rhapsody 2202
No-Spin (13)—Absolut 7700,
Chanson 4271, Brokher 759

CREEPSTAKES

30' & Over (3)—Illusion 419
Under 30' (16)—True Love 1518,
Dragon Fly 5861, Firewater II 1457,
Amethyst 421

WEST ISLAND

Spin (16)—Cherry Pi 14423,
Obsession 114, Weed 40999,
Brokher 759
No-Spin I (6)—Nessie 628,
Likewow 22643
No-Spin II (3)—Slim 62
Cruising (3)—Utopia 222

SPRING OCEAN

No-Spin (4)—Outlaw 888,
Catharsis 999

RACE WEEK SERIES

Spin (13)—Firewater II 1457,
Orion 1764, Merry Ann 220
No-Spin (2)—Slim 62,
Cruising (3)—Magic 200,

WESTERN TWILIGHT SPRING SERIES

Spin (8)—Amethyst 421
Merry Ann 220, Bionator 395
No-Spin (5)—Outlaw 888,
Catharsis 999

RACE WEEK WIND-UP

Spin (16)—Rhapsody 2202,
Firewater II 1457, True Love 1518,
Orion 1764
No-Spin (9)—Likewow 22643,
Catharsis 999, Sparrow 6
Cruising (3)—Magic 200,

BABYLON TWILIGHT SPRING SERIES

No-Spin (12)—Amethyst 421,
Silver Bullet 42370, Rhapsody 2202

SMITH TROPHY

Spin (13)—White Squall 934,
Cherry Pi 14423, Firewater II 1457
No-Spin (13)—Drumshanbo 10987,
Yellowbird 2404, Quest 24191

SUMMER SPRINT SERIES

No Spin (3)—Amethyst 421

Note: Number in parenthesis is number of starters for that class.

SBCC TROPHIES — 1989 (Cont'd.)

WESTERN TWILIGHT MID-SUMMER SERIES

Spin (8)—Amethyst 421,
Moondance 225, True Love 1518
No-Spin (9)—Cherry Pi 14423,
Drumshambo 10987, Catharsis 999

BABYLON TWILIGHT MID-SUMMER SERIES

No-Spin (17)—Amethyst 421,
Silver Bullet 42370, Slim 62,
Bionator 395

LADIES RACE

All Girl Crew (4)—Catharsis 999
Drumshambo 10987

COMMODORE'S CUP

Spin (9)—White Squall 934,
Firewater II 1457, Merry Ann 220
No-Spin (9)—Slim 62,
Sparrow 6, Likewow 22643

FOULKE TROPHY

Spin (9)—Firewater II 1457,
Cherry Pi 14423, Amethyst 421
No-Spin (5)—Weed 40999,
Catharsis 999

WESTERN TWILIGHT FALL SERIES

No-Spin (14)—Amethyst 421,
Mirage 536, Merry Ann 220

BABYLON TWILIGHT FALL SERIES

Spin (5)—Amethyst 421,
Silver Bullet 42370
No-Spin (10)—Menage A Trois 40601,
Cherry Pi 14423, Brokher 759

FALL SPRINT SERIES

No-Spin (4)—Cherry Pi 14423,
Dickens 670

TURKEY RACE

Spin (3)—Silver Bullet 42370
No-Spin (7)—Mirage 536,
Quest 24191, Ailanthus 1121

WESTERN TWILIGHT WRAP-UP SERIES

No-Spin (15)—Amethyst 421,
Silver Bullet 42370, Cherry Pi 14423,
Merry Ann 220

BABYLON TWILIGHT WRAP-UP SERIES

No-Spin (18)—Amethyst 421,
Silver Bullet 42370,
Mirage 536, Cherry Pi 14423

DISCOVERERS RACE

Spin (7)—Riley Coyote 41318,
Firewater II 1457, Rhapsody 2202
No-Spin (12)—Chanson 4271,
Quest 24191, Catharsis 999

LAST CHANCE

Spin (9)—Weed 40999,
What Me Worry 32884,
Absolut 7700
No-Spin (11)—Quest 24191,
Catharsis 999, Likewow 22643

YACHT CLUB INVITATIONALS

BABYLON YC 4th JULY INVITATIONAL

Spin (13)—Merry Ann 220,
Firewater II 1457, True Love 1518
No-Spin (20)—Mirage 536,
Slim 62, Nessie 628, Rhapsody 2202

SAYVILLE YC INVITATIONAL

Spin (13)—Merry Ann 220,
Firewater II 1457, Amethyst 421
No-Spin (18)—Menage A Trois 40601,
Orange Crush 103, Likewow 22643,
Shenanigans 3103
Cruising (7)—Chubby Cheeks 545,
Felicity 1115, Cro's Nest 162

SBCC INVITATIONAL

Spin (5)—Amethyst 421,
Sigrid 33978
No-Spin (11)—Silver Bullet 42370,
Slim 62, Falcon 242

BABYLON YC FALL INVITATIONAL

No-Spin (4)—Quest 24191,
Cherry Pi 14423

Note: Number in parenthesis is number of starters for that class.

SBCC CLASS CHAMPIONS

SPINNAKER

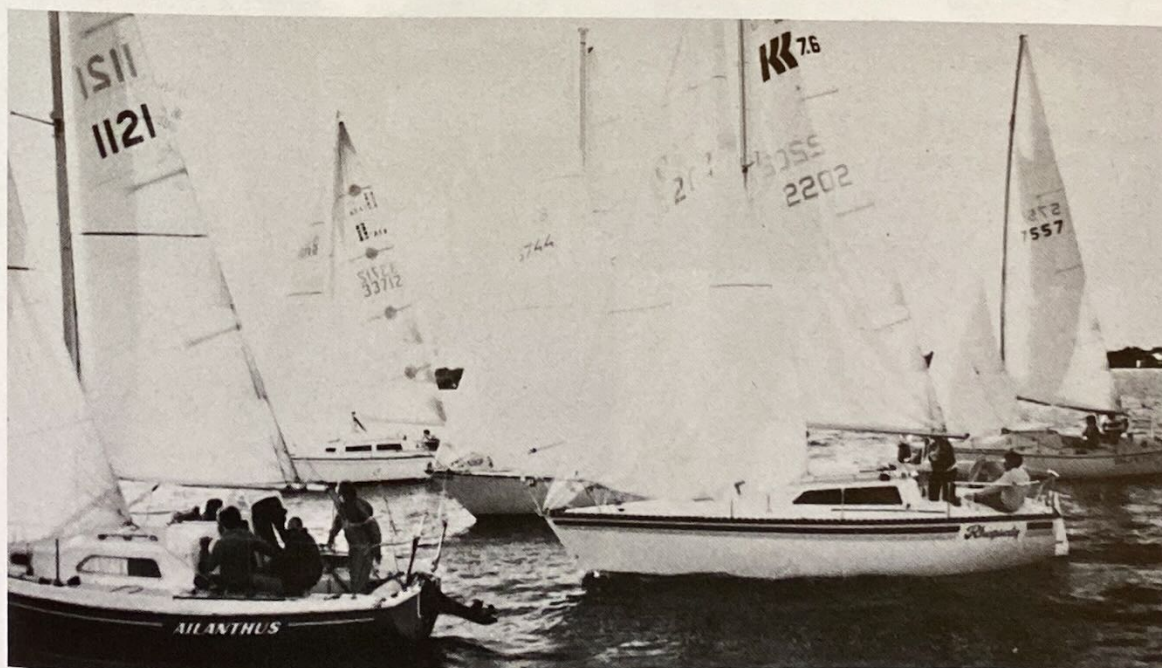
1989	Firewater II	Baldwin/Crocker
1988	Firewater II	Baldwin/Crocker
1987	Blue Thunder	C. Pearsall
1986	Cherry Pi	F. Marinaccio
1985	Blue Thunder	B. Kennedy
1984	Tachyon	D. Cameron
1983	Ailanthus	W. Grauer
1982	Wild Rover	B. Brownyard
1981	Ailanthus	W. Grauer
1980	Gray Ghost	W. Cook, Jr.
1979	Jacqueline II	R. Forman, Jr.
1978	Loon	L. Orr, Jr.
1977	Loon	L. Orr, Jr.

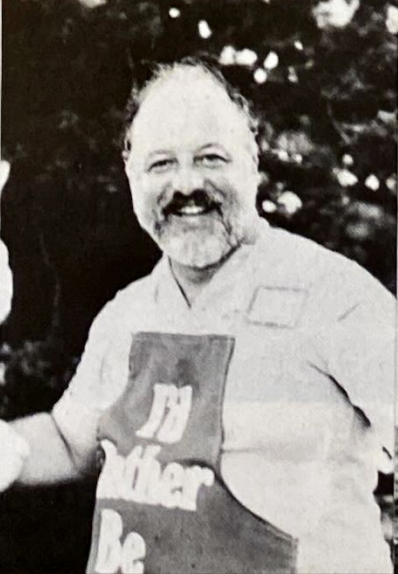
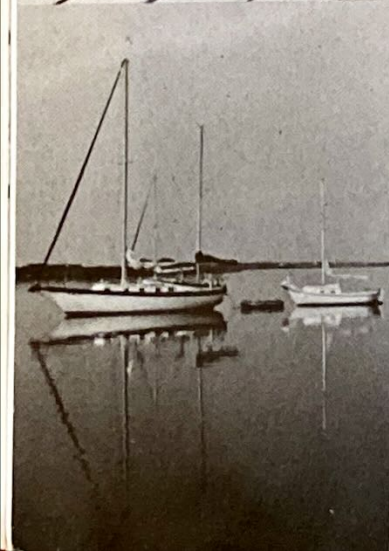
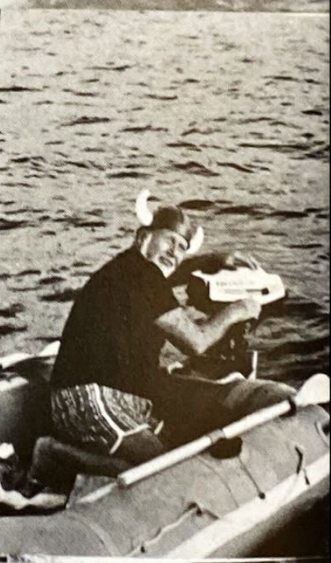
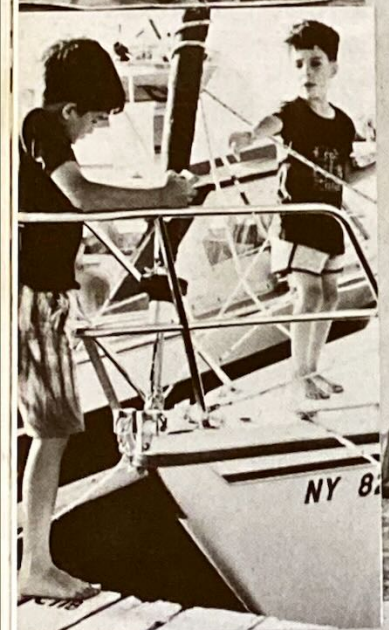
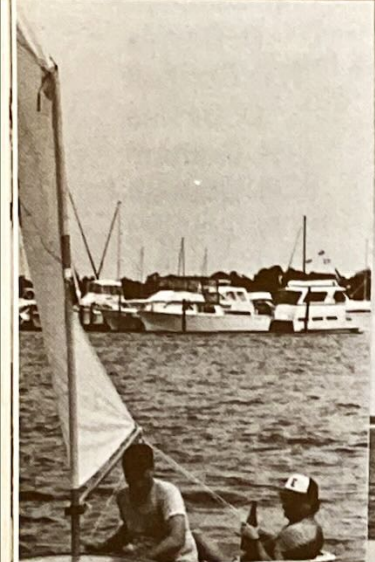
NON-SPINNAKER

Quest	B. Van Tassel
Slim	H. Hamstra
Drumshanbo	B. Pittman
Mirage	G. Schneller
Blaze	R. LaBella
Cherry Pi	F. Marinaccio
Jeannie	L. Deutsch
Heather	D. Davies
Lucky Bark III	T. O'Connell
Heather	D. Davies
Aeolus	R. Graham
Aeolus	R. Graham
Aeolus	R. Graham
Amen	W. Holmes

AROUND LONG ISLAND PARTICIPANTS — 1989

Robert Forman	Div. 4	1st
John Pallotta	Div. 5	2nd
Michael Goodman	Div. 3	3rd
Alan James	Div. 4	4th
James Reichel	Div. 8	6th
Doug Davies	Div. 8	7th
Bill Kimbell	Div. 3	8th
Bob Van Tassel	Div. 7	9th
David Pearsall	Div. 4	9th
John Classen	Div. 2	12th





MEMBERS — South Bay Cruising Club — 1990

LAST	FIRST	ADDRESS	YR.	PHONE	SAIL #
Afflixio, Vincent, Jr. & Debra,		71 Pamoqua Lane, West Islip	81	422-1763	3655
Applegate, William H.,		113 Clover Drive, Massapequa Park	82	799-8606	444
Archer, Joseph & Margaret,		391 Hewlett Pkwy., Hewlett	87	374-7135	95
Aries, Dr. Phillip M. & Judith,		24 Beech Road, Islip	77	581-6063	917
Aubin, William M. & Joyce,		9 Pansmith Lane, West Islip	76	669-1715	555
August, Barry F., D.D.S.,		1111 Montauk Highway, West Islip		666-5191	1759
Bacci, Bill & Carolyn,		79 Manton Street, Sayville	85	589-2477	132
Bachman, Richard B. & Sharon,		114 Hamilton Road, Rockville Centre	85	764-8084	4406
Baldwin, G. Gorton, Jr. & Sarah Lee,		188 West Islip Road, W. Islip	51	669-9247	Power
Baldwin, G. Gorton III & Jennifer,		40 Skookwams Court, West Islip	81	422-0909	1457
Baroni, Anthony & Kathy,		20 Percy Williams Drive, East Islip	62	581-4607	Power
Barth, Richard & Ilene,		122 South Penataquit Avenue, Bay Shore	88	666-4981	140
Becker, Charles & Barbara,		12 West Lane, Bay Shore	79	666-0194	354
Becker, Joel E. & Dorothy,		139 Woodbury Road, Hauppauge	77	234-4062	1204
Becker, Lawrence,		260 Great River Road, Great River	87	581-7107	1518
Benedict, Ronald W. & Dorothy,		901 Ocean Avenue, Bohemia		589-2575	701
Bergenn, Arthur & Marie,		92 South Ocean Avenue, Bayport	86	472-0069	452
Berhannan, Norman A. & Sarah,		3 Hamlin Avenue, West Babylon	78	643-9592	119
Bernstein, Richard & Lily,		36 Mt. McKinley Avenue, Farmingville	86	698-3594	390
Black, Kenneth & Grace,		24 Argyle Drive, Northport	85	757-7309	2041 & 441
Blossom, Beth,		71 Independance Avenue, Babylon	75	422-7993	903
Blum, Harold & Maria,		1431 Richland Boulevard, Bay Shore	85	666-6429	543
Bodkin, George & Pat,		386 Greene Avenue, Sayville	86	589-8994	162
Bogan, John H. & Louise,		245 Richmond Avenue, Amityville	70	842-1020	263
Bollman, Charles,		827 Venetian Boulevard, Lindenhurst	88	226-6743	208
Borella, Edward J. & Linda,		95 Harbor Lane, Massapequa Park	88	798-4438	6500
Bottino, Gino C. & Jane,		614 Half Moon Bay Dr., Croton-on-Hudson, NY	86	271-4537*	42
Boulukos, George N. & Kathy,		862 Guy Lombardo Ave., Freeport	56	868-4092	14
Boyd, Donald M. & Lou,		111 South Bayview Avenue, Amityville	71	264-3518	433
Brant, Austin E., Jr. & Jeanne,		78 Stratford Road, W. Hempstead	79	481-5907	19
Brice, Stephen R.		144 Ocean Avenue, Amityville	75	842-3662	732
Briesmeister, William & Florence,		82 Powell Court, N. Babylon	86	669-6272	123
Brooks, Edward A., Jr.,		131 West Islip Road, West Islip	70	587-4333	31950
Brous, Marilyn & David,		770 Shore Walk, Lindenhurst	86	226-2788	
Brown, Donald & Robin,		1280 North Parish Drive, Southold	68	765-1075	2420
Browne, David G. & Dolores,		131 Sawyer Avenue, West Babylon	77	669-4382	418
Brownyard, Brendan J. & Bettina,		106 McConnell Avenue, Bayport	76	472-9019	42998
Buckman, Jerome L. & Elizabeth M.,		44 Country Club Road, Bellport	88	286-1527	52
Burke, William & Barbara,		24 Karen Place, Commack	83	499-9182	1185
Burns, Richard C. & Dorothy,		74 Eaton Lane, West Islip	84	587-1804	670
Burnup, John & Virginia,		29 White St., Brentwood	89	273-8960	1425
Cahill, James F. & Mary,		75 Hampton Road, Garden City	71	741-5788	204
Cameron, Donald J. & Kathleen,		306 Versal Place, Sayville	76	567-1698	776
Canino, Robert & Jennifer,		152 Tahlulah Lane, West Islip	85	661-1396	192
Canning, Dr. John & Pearle,		13 Lacy Court, Blue Point	69	363-2950	190
Caputo, Bud & Linda,		277 Tahlulah Lane, West Islip	89	587-1601	4571
Carl, Capt. Robert & Diana,		P.O. Box 456, Lousonville, NC			81 & P
Carl, William,		Box 767, Kilmarnock, VA	51c	435-1775*	
Carlson, Charles & Margaret,		17 Roosevelt Blvd., Massapequa	87	541-0917	107

*Outside 516 Telephone Area

MEMBERS — South Bay Cruising Club — 1990 (Cont'd.)

LAST	FIRST	ADDRESS	YR.	PHONE	SAIL #
Casey, Louis John & Gail,		118 Center Bay Drive, West Islip	66	587-8388	1001
Cashton, Dennis & Lynn,		1217 Martin Drive, Wantagh	85	221-2389	9272
Chapey, Joseph,		1225 Montauk Highway, West Islip	87	661-5040	1225
Christiansen, Lee & Margaret,		6 Birchwood Drive, Great River	81	277-6311	999
Christopher, Warren & Gloria,		34 River Road, Sayville	86	589-3509	1242
Classen, John R. & Lorraine,		1543 Pine Acres Boulevard, Bay Shore	77	666-8926	11588
Clemons, Henry,		22 Admirals Drive E., West Bay Shore	84	968-9101	150
Cohen, Dr. Shoel M.,		15-E Bellport Lane, Bellport	87	286-4567	2185
Cohn, Bruce & Roseanne,		107 Utica Street, Bay Shore	87	666-0309	5460
Coleman, Robert,		970 Douglas Avenue, Wantagh	78	221-6893	1133
Colleran, Harry J. & Marilyn,		31 Cutter Court, West Islip	60	669-8689	26164
Colombo, Russ & Linda,		13 Inlet View, Bay Shore	81	666-5384	1012
Connor, Dennis & Barbara,		1704 Asharoken Blvd., Bay Shore	83	665-7266	1161
Cook, William H. & Mary Ann,		45 Elder Road, Islip	63	581-5657	220
Cornman, Frederick Jr. & Joan,		12 Larkspur Drive, West Islip	83	669-6628	39
Coroneos, Ralph & Gabriella,		651 Lakeside Dr., Baldwin	89	546-5083	234
Courten, Mary & Henry,		8 Inlet View, Bay Shore	86	665-5575	1312
Cramer, Thomas F. & Dolores,		12 Slope Lane, Hauppauge	81	360-3466	684
Cresci, Robert J. & Jane,		115 The Helm, East Islip	85	277-2570	3301
Crocker, Douglas & Katherine,		60 Village Line Road, Babylon	85	587-4871	1457
Czach, Richard & Joan,		3 Cord Avenue, West Babylon	88	587-8905	675
Dauch, Thomas E., Jr. & Jan,		45 Evelyn Road, West Islip	70	669-0950	292
Dauzickas, Paul, Jr.,		173 Melbury Road, Babylon	76	587-3484	251
David, Thomas F. & Susan,		28 Namkee Road, Blue Point	80	363-2427	103
Davies, Anton F. & Evelyn,		23 Cutter Court, West Islip	72c	587-0736	2712
Davies, Douglas E. & Barbara,		88 Bacon Lane, Bay Shore	80	665-0174	421
Davis, John & Kathryn,		503 Avon Place, West Islip	83	587-9326	5861
Daytz, Richard M. & Sheila,		3 Davison Lane, West Islip	65	669-6993	10207
Dean, Dick & Maureen,		39 S. Windsor Avenue, Brightwaters	85	786-3500	344
de La Houssaye, Alfred,		417 Lafayette Street, New York City 10003	87	460-5701*	5050
DeLise, Stephen W.,		5 Captains Walk, Bay Shore	73	968-5864	101
DeLuca, John & Karen,		32 Colton Avenue, Sayville	87	567-7925	311
deMurias, Ramon & Carlin,		74 Douglas Avenue, Babylon	51	669-0034	Power
Dennison, Dr. Gary, & Patti,		13 Harbour Drive, Blue Point	81	363-6576	3807
Deutsch, Lowell A. & Jeannette,		36 Bridle Way, Oakdale	75	589-3875	171
Dew, Edward S., Jr. & Frances,		40 Terry Road, Patchogue	78	475-6367	1714
Doscher, William & Jill,		405 South Little East Neck Road, Babylon	88	422-7142	622
Dowling, Leslie & Patricia,		269 33rd Street, Lindenhurst	86	226-1218	269
Drabkin, Joel & Jean,		364 Riviera Drive S., Massapequa	85	799-5568	1351
Dreher, Warren F. & Dail,		10 Angela Lane, Bay Shore	83	665-1422	4760
Dunleavy, William P. & Barbara,		243 Bay View Drive, Oakdale	72	567-0594	423
Dunlop, Robert F. & Peggy,		82 Sequams Lane West, West Islip	62	669-4807	176
Dunnells, Jerry & Susan,		27 Sequams Lane, West Islip	86	661-8345	4271
Dwyer, William J. & Barby,		116 S. Kihridge Lane, Encinitas, CA	66c	944-8924*	4242
Eggerstedt, Fred & Lucy,		5980 Shore Blvd., Gulfport, FL	53c	377-0552*	144
Eilbeck, William D. & Sally A.,		P.O. Box 144, Babylon	88	661-1507	58
Eitapence, Bernard & Eileen,		534 Pease Lane, West Islip	84	669-5927	1115
Engel, Robert & Sally,		30 Squaw Lane, Sayville	86	589-4561	

*Outside 516 Telephone Area

MEMBERS — South Bay Cruising Club — 1990 (Cont'd.)

LAST	FIRST	ADDRESS	YR.	PHONE	SAIL #
Eppig, Aileen,		153 Eaton Lane, West Islip	85	422-6032	759
Ernst, Robert S.C. & Dot,		321 Great River Road, Great River	69	277-4167	122
Etimos, Steven & Deborah,		55 Timber Point Rd., East Islip	86	277-2410	879
Faas, Thomas & Victoria,		253 S. Union Ave., Islip	89	277-7749	253
Faber, Thomas C. & Mary Ellen,		56 Arline Lane, East Islip	89	277-0328	1555
Feldhusen, Harold & Marianne,		2406 Legion Street, Bellmore	81	781-0388	6565
Feldman, Arthur R. & Marilyn,		960 Gardiner Drive, Bay Shore	70	666-5494	705
Fenner, Bayard C. & Susan,		Brushy Neck Lane, Remsenburg	82	325-1787	2141
Ferguson, Jim & Donna,		39 Avon Place, Amityville	82	691-4055	57 & 1125
Fili, Saverio J. D.D.S. & Jeanne,		2225 North Jerusalem Road, East Meadow	89	472-2622	1321
Finkle, Bill & Jackie,		103 Harbour Lane, W. Bay Shore	83	968-5881	1000
Fishman, Manny & Yetta,		2890 Bayview Avenue, Wantagh	74	826-4251	1220
Flanagan, William & Patricia,		185 Dovecote Lane, Central Islip	81	234-5112	5112
Fleischman, William & Lois,		311 W. 11th St., Deer Park	89	586-3782	3111
Flett, Brian & Judi,		1710 Asharoken Boulevard, Bay Shore	88	666-1915	1127
Forman, Robert S., Jr. & Jacqueline,		183 West Islip Road, West Islip	69	587-3904	818
Forsyth, Eric B. & Edith,		2 Bond Lane, Brookhaven	62	286-9721	48
Foyt, William J. & Doris A.,		77 Sequams Lane E., West Islip	86	669-0549	26
Frank, Dr. William M.,		8 Kay Court, East Islip	80	665-1880	11185
French, Joe F. & Betty,		86 Wagstaff Lane, West Islip	67	587-2936	2700
Freudenthal, Drs. Hugo & Anita,		13 Iroquois Place, Massapequa	74	798-2545	544 & P
Fritz, William C.,		15 Ridgewood Drive, Shirley	84	281-6365	4382
Fuechtmann, Bud & Sue,		84 Lido Promenade, E., Lindenhurst	82	226-8552	163
Gallagher, Bill & Maureen,		11 Pershing Avenue, W. Babylon	83	587-2931	245
Garb, Theodore & Celia,		4068 Bayberry Lane, Seaford	86	221-8347	22
Garben, Robert & Daisy,		3245 Wells Avenue, Box 891, Southold			59
Gardner, Ms. DeWitt,		29 Richmond Avenue, Amityville	86	598-0239	671
Gardner, Donald W. & Elizabeth,		14 North Brewster Lane, Bellport	68	286-1396	403
Gargiulo, Michael L. & Gloria,		223 Sylan Road, North Babylon	88	669-2321	524
Gauch, Frederick & Anita,		41 Connetquot Drive, Oakdale	65	589-1684	73
Giannott, Bruce & Kathy,		542 Manatuck Blvd., Brightwaters	81	665-7616	542
Gillespie, Frank & Barbara,		Box 200, Islip	80	581-7014	3865
Ginty, George B.,		19 Lincoln Drive, Oakdale	84	589-8732	336
Glynn, James J. & Suzy,		48 Foster Lane, Babylon	73	587-4868	1101
Goetz, Leo M. & Alexis,		153 Sequams Lane, West Islip	84	587-8312	85
Goldsmith, Morris & Judith,		25 Fairwater Avenue, Massapequa	60	541-1656	203
Good, John F.,		23 Water Edge Court, Babylon	82	669-4924	636
Goodman, Michael & Gail,		158 Sequams Lane West, West Islip	79	587-2550	395
Goodwin, Harold E. & Betty,		154 Greystone Road, Rockville Centre	68	764-7160	151
Goodwin, Kenneth & Debra,		41 Sequams Lane West, West Islip	86	422-4408	70
Goodwin, Roger F. & Genni,		2267 Arby Court, Bellmore	77	826-4626	1770
Gorin, Dr. Martin, & Bernice,		15 Wright Road, Rockville Centre	80	678-5502	385
Gotard, Thomas & Joyce,		372 Hickory Street, Massapequa	77	541-2805	1260
Graham, Dick T. & Pat,		11 Haide Place, East Islip	69	581-5412	297
Grauer, William & Vivian,		52 Andrew Ave., Islip Terrace	76	277-6212	1121
Greenfield, Sandy & Phyllis,		233 Helm Lane, W. Bay Shore	83	665-5174	167
Grover, James R., Jr. & Mary,		185 Woodsome Road, Babylon	57	669-6891	185
Gurak, Marv & Harriet,		41 Richfield Street, Plainview	86	349-1669	181
Hall, David & Rosalind,		P.O. #2, Douglaston	87	229-0974	1461

*Outside 516 Telephone Area

MEMBERS — South Bay Cruising Club — 1990 (Cont'd.)

LAST	FIRST	ADDRESS	YR.	PHONE	SAIL #
Hallam, Joseph & Marilyn,		4039 Ocean Walk, West Gilgo Beach	88	785-4496	166
Halpin, Patrick G. & Debra,		South First Street, Lindenhurst	90		870
Hamstra, J. Howard & Elizabeth,		1 Harbour Road, Babylon	64	669-1387	62
Hangarter, Dr. Theodore,		300 Willets Lane, West Islip	60	661-0475	102
Harris, Colin & Eunice,		121 Montgomery Avenue, North Babylon	77	587-3648	469
Hartzell, Claude R. & Doris,		87 Pittsburg Avenue, Massapequa	79	798-5097	322
Healy, Richard A. & Olive,		7 Christopher Court, Babylon	82	587-6040	33531
Heckel, Alfred H. & Stasia,		207 Captains Way, Bay Shore	56	666-6699	242
Heckel, Christine,		300 East Dr., Copiague	89	842-1930	139
Heckel, Nancy,		108 Grassmere Avenue, Oakdale			243
Hedde, Carl & Grace,		35 Regina Drive, Sayville	82	589-8644	184
Heess, Fred A. & Mary,		9 Harbour Road, Babylon	65	661-1185	68
Heller, Mort & Lucille,		69 Woodhull Place, Northport	72	754-5543	325
Henry, Thomas E. & Barbara,		175 SE ST. Lucie Blvd., Apt. I-216, Stuart, FL	73	287-5603*	Power
Hessel, John & Gail,		55 Gristmill Drive, Kings Park	87	979-0591	3118
Hettinger, Edwin & Frances,		95 Warner Road, Huntington	80	368-7455	460
Hilgendorf, David N.,		P.O. Box 252, Islip	83	277-4027	2221
Hoernel, Robert,		7 Otis La., Bellport	90	286-8886	366
Hoey, Richard & Aline,		22 Sunset Road, Massapequa	86	795-0216	537
Hoffman, Mack & Dianne,		80 Redwood Lane, Massapequa Park	88	798-3230	199
Holler, Howard I. & Joan,		8529 102nd Street, Richmond Hill	73	846-5167*	Power
Hollis, John M. & Rose,		53 Briarcliff Drive, Merrick	70	623-4766	168
Hollis, Robert L. & Betty,		142 Tahlulah Lane, West Islip	72	669-6749	298
Holwell, Frank S. & Joyce,		72 Purdy Lane, Amityville	55	264-0524	23
Holzmacher, Robert G. & Ardith,		176 Peninsula Dr., Babylon	57	661-0294	115
Horn, Frederick L. & Bobby,		461 Green Avenue, Sayville	69	589-2759	335
Horn, Herbert E. & Gae,		444 Saratoga Avenue, Santa Clara, CA	51		
Howell, Rogers & Mary,		20 Dorset Lane, Babylon		669-3140	Power
Hoyler, Charles J. 3rd & Jill,		11 Sequams Lane W., West Islip	84	669-2619	210
Huberman, Charles & Debra,		52 Willshire Lane, Apt. M3, Oakdale	88	563-4856	1681
Hughes, Spencer E., Jr. & Diane,		11 Highland Street, West, Massapequa	84	799-6583	1480
Husing, William & Nancy,		4 Newey Lane, Brookhaven	87	286-1786	1531
Istel, John L. & Dorothy,		502 Rockrimmon Rd., Stamford, CT	73	322-7799*	1128
Iurillo, Adolf & Mary Lee,		100 Wampum Lane, West Islip	65	587-2878	Power
Jackson, Donald A. & Nola,		45 Western Concourse, Amityville	84	842-5168	327
James, Alan & Paula,		11 Meadow Lane, Brookhaven	86	286-4932	888
Jeffers, James & Patricia,		312 Dolphin Lane, West Babylon	83	587-1785	712
Jewell, Truman & Dorothy,		155 Division Avenue, Massapequa	86	541-2256	853
Jimenez, Peter & Maria,		113 E. Riviera Drive, Lindenhurst	82	226-6171	136
John, William, Jr. & Barbara,		17 Laurel Road, Oakdale	78	567-0525	1215
Johnston, William & Annette,		1084 Cassel Avenue, Bay Shore	79	665-3248	312
Jones, Tony & Paulette C.,		39 West Avenue, West Sayville	88	563-9371	50682
Kachel, Walter & Diana,		6 Bunny Lane, Amityville	75	598-3592	4495
Kaiser, Edmund A. & Grace,		160 Franklin Road, Oakdale	70	589-8474	219
Kanser, Robert & Marylan,		163 Tahlulah Lane, West Islip	87	587-1060	8
Kapell, Robert & Joan,		31 Nancy Drive, Sayville	87	567-5469	369
Kaplan, Harvey & Susan,		178 Rutland Road, Hempstead	88	489-1656	12631
Katsikis, James & Miriam,		200 East Bayberry Road, Islip	87	277-6827	202
Kaufman, Joseph & Diana,		16 Lucinda Drive, Babylon	87	587-6400	285
Keenan, Gerard J. & Anne,		115 Wampum Lane, West Islip	82	422-0987	700

*Outside 516 Telephone Area

MEMBERS — South Bay Cruising Club — 1990 (Cont'd.)

LAST	FIRST	ADDRESS	YR.	PHONE	SAIL #
Keller, Kenneth J. & Melanie,		8 Coventry Lane, Central Islip	82	234-6593	514
Kennedy, Bruce & Melissa,		7 Bayside Avenue, Amityville	75	598-0751	320
Kennelly, Edward J. & Carole,		165 Paulanna Avenue, Bayport	77	472-0923	165
Ketcham, Donald F.,		15 Morris Street, Amityville		264-5411	464
Ketcham, Paul T. & Muriel,		62 New Point Place, Amityville		264-1040	
Kettel, Tony & Edith,		49 Ocean Road, W. Gilgo Beach, Babylon	86	781-1583	33
Kimbell, William & Beverly Carol,		129 So Penataquit Avenue, Bay Shore	88	968-6747	3333
Kind, Volker & Andrea,		504 Bay 5th Street, West Islip	72	661-4070	822
King, Lon & Nancy,		516 Bay 5th Street, West Islip	84	669-4858	11976
Kissenberth, Erwin & Gertrude,		48 Stuart Street, Lynbrook	80	593-9438	178
Kleisler, Bruce & Kathleen,		22 Cokeno Avenue, Babylon	65	587-2899	96
Klesick, August & Inge,		51 Barberry Court, Amityville	64	264-0846	Power
Knott, Peter J. & Shirley Mae,		203 Melbury Road, Babylon	77	587-9098	347
Kohl, Leo & Irene,		2519 Soma Avenue, Bellmore	90	679-9857	4430
Kohl, Michael L. & Robin,		75 Suffolk Road, Massapequa	84	795-7725	2484
Kondor, Lynn,		102 Jackson Avenue, Rockville Centre	63c	764-3213	99
Konz, William T. & Eunice,		185 Mooring Line Drive, 2E, Vero Beach FL	62		Power
Koster, John & JoAnna,		87 South Ocean Avenue Bayport	78	472-0335	3454
Kracht, Jeffrey & Claudia,		139 Rhode Island Avenue, Bay Shore	82	666-9280	142
Krug, Dennis & Adrian,		25 Harkin Lane, Hicksville	80	433-3452	283
LaBella, Richard J. & Diane,		282 Timberpoint Road, East Islip	74	277-4826	725
Labenow, Dr. Harvey & Gayle,		100 Peninsula Drive, Babylon	71	661-8641	Power
Ladden, Bruce & Adrienne,		57 Shepard Street, Rockville Centre	88	678-3230	1382
Lake, Arnold & Margot,		3549 Lufberry Avenue, Wantagh	81	785-4740	447
Lambart, Bill & Barbara,		3210 Byrd Place, Baldwin	83	868-9698	21919
Langley, Fr. Harold,		1921 Old Mill Rd., North Merrick	70	379-1356	388
Lapp, William & Patricia,		1311 Ocean Avenue, Bohemia	80	563-6391	1061
Larmor, J. Dever & Andrea,		79 Nassau Avenue, Islip		277-4933	305
La Torre, Richard & Ginny,		11 Cutter Place, W. Babylon	81	321-7311	1855
Layton, Jack E. & Kathi,		156 Cross Road, Oakdale	73	589-9206	625
LeBow, Howard & Marge,		66 Woodhollow Road, Great River	82	224-4416	Power
Le Causi, Richard & Blanche,		38 Secatogue Lane E., West Islip	83	669-1522	22643
Le Maitre, Douglas,		2113 Oak Beach Road, Oak Beach	84	789-1972	169
Leddy, James & Maureen,		16 Nancy Drive, Sayville	86	589-9454	2641
Leiman, David S. & Dottie,		177 Secatogue Lane W., West Islip	82	587-0196	479
Leissing, Ted & Mary,		14 St. John's Avenue, Hicksville	87	681-8263	3441
Leopold, Larry & Nancy,		68 Burton Avenue, Plainview	86	443-5641	109
Lesser, Mortimer & Henrietta,		530 E. 90th Street, New York City 10128	86	722-6775*	173
Levee, Mark & Irene,		20 Locust Street, Valley Stream	88	825-4770	477
Lightstone, Peter,		2211 Broadway, New York City 10024	86	799-4330*	92
Lilly, John R. & Marilyn,		164 Emerson Avenue, North Babylon	88	422-9693	71044
Linker, Philip B. & Ingke,		74 Oak Road, Bayport	79	472-3170	Power
Ljungqvist, Peter & Kathy,		306A South Country Road, Brookhaven	86	286-4840	67
Lovito, Andrew J. & Kenna,		29 Corey Avenue, Blue Point	80	363-6973	641
Lowy, Larry & Dianne,		9 Rutgers Road, Farmingville	83	732-6641	110
Lucivero, Michael P. & Maureen,		P.O. Box 337, Seaford	82	798-9258	2180
Ludlum, William & Barbara,		69 Oakwood Avenue, Bayport	86	472-0270	201
Luloff, Philip,		240 Central Park So., 9J, NYC 10019	89	757-6650*	6996
MacDonell, David III & Cindy,		8 Fairway East, Sayville	80	589-5017	183
MacGill, Bruce & Ethel,		39 Stuart Avenue, Amityville	65	598-1050	11

*Outside 516 Telephone Area

MEMBERS — South Bay Cruising Club — 1990 (Cont'd.)

LAST	FIRST	ADDRESS	YR.	PHONE	SAIL #
Madigan, Thomas B. & Elizabeth,		68 Shirley Court, Commack	74	543-4465	450
Maltman, Thomas & Ellan,		89 Marilyn Street, East Islip	86	581-5021	12790
Margeson, Charles & Jane,		6 Braham Street, Amityville	88	691-5569	318
Marinaccio, Frank & Pat,		43 Chapel Hill Drive, Brentwood	84	231-6457	14423
Martorana, Bob & Ronnie,		19 Duck Lane, West Islip	81	422-3404	621
Mattera, Jeff,		195 Sunnyside Road, Oceanside	81	764-6685	4201
Maud, Dr. Dennis & Joyce,		14 Demarre Lane, Bayport	81	472-0636	3860
Maud, Dr. Dwight & Carolyn,		4 Buscher Court, Brookhaven	78	286-1111	3814
Max, Dorothy,		11 Clearwater Avenue, Massapequa	53	541-4860	1 & P
McCarthy, Rev. Thomas J.,		215 W. Santa Barbara Road, Lindenhurst	76	226-5945	549
McClone, Thomas A., Jr. & Christine,		74 Sequams Lane West, West Islip		669-5769	930
McCormack, Joseph A. & Dorothy,		41 Glasgow Avenue, Deer Park	89	667-7612	6643
McCrory, Chris & Joanne,		78 Bayview Avenue, Bayport	81	472-4746	33811
McDonald, William B. & Marilyn A.,		511 Milligan Lane, West Islip	83	669-6191	15
McGinnis, Paul J.,		20 Broadway, Massapequa	79	795-7614	
McGinty, Richard & Christine,		3190 Oceanside Harbor Drive, Oceanside	88	678-0663	1010
McGrath, Richard & Bea,		17 Captain's Walk, Bay Shore	88	666-3886	1137
McGuire, Richard & Amy,		321 Dolphin Lane, West Babylon	82	587-4672	22770
McInerney, John,		P.O. Box 150, Bay Shore	76	589-1454	281
McKeen, Joseph & Susan,		11 Cutter Court, West Islip	74	422-1729	739
McLaren, Richard & Marilyn,		3 Park St., Lake Grove	89	588-8881	42295
McMahon, James D. & Elizabeth,		15 Terrell Avenue, Rockville Centre	83	766-2002	828
McNamee, Tom & Lyn,		96 Sunset Drive, Sayville	89	589-1960	3222
McPherson, Gracie,		19 Montrose Avenue, Babylon	67	587-2085	
Meehan, Jim & April,		24 Wood Acres Road, E. Patchogue	81	286-0288	587
Meinking, Karl & Joan,		81 Sunset Blvd., Massapequa	83	541-3483	1146
Menger, William M. & Beryl,		416 Fire Island Avenue, Babylon	66	587-4930	9
Merklin, Frank & Jacquelyn,		2502 Aron Drive West, Seaford	80	826-7448	226
Merz, Robert & Jo,		65 Hearthstone Drive, Dix Hills	86	499-5633	1936
Meyer, Albert & Harolyn,		19 Clearwater Lane, West Islip	81	422-0891	6305
Meyerson, Michael H.,		8 Oakdale Avenue, Oakdale	83	589-4867	40601
Milano, John & Gail,		54 Dolphin Lane E., Copiague	89	842-1807	422
Miller, Edward E. & Jacquelyn,		27 Little East Neck Road S., Babylon	68	661-4862	6
Milligi, Michael,		1415 Sunrise Highway, Bay Shore	89	666-1602	1371
Milstein, Stanley & Joanne,		106 Ocean Avenue, Amityville	82	598-1035	Power
Montiel, John & Beverly,		56 Mowbray Avenue, Bay Shore	85	666-7560	1983
Moreland, Lee & Mary,		39 Hollister Lane, Islip	78	277-0079	10096
Morgan, Mary & Miller, Dale,		184 Granny Road, Farmingville	88	698-0243	54062
Morris, John C., & Lillain,		101 Harbour Lane, W. Bay Shore	80	666-6193	6789
Mourino, Richard A. & Ann,		150 Rollstone Avenue, W. Sayville	85	589-2275	6217
Muhr, Richard & Charlene,		38 Montrose Avenue, Babylon	89	669-2795	1149
Mulle, Anthony H. & Antionette,		42 Thompson Avenue, Babylon	79	669-7969	360
Murphy, Peter G. & Pamela M.,		75 Harbour Lane, W. Bay Shore	85	666-2507	1991
Murray, Earl W., Jr. & Trudy,		Box 205, Great River	70c	277-3928	
Murray, William & Connie,		16 Danes Street, Blue Point	83	363-7511	
Nafey, Walter,		P.O. Box 331, Mastic	84	281-7686	No #
Natale, Lou & Jeffrie,		5 Fels Way, St. James	88	862-7511	503
Navickas, Cmdr. Richard & Judy Weed,		55 So. Ireland Place, Amityville	88	598-3439	501
Nehring, Richard C. & Jinie,		5108 Bucco Reef Road, New Bern, NC	64c	633-0619*	668
Nehring, Thomas C. & Kindy,		163 Clocks Boulevard, Massapequa	80	795-4154	668

*Outside 516 Telephone Area

MEMBERS — South Bay Cruising Club — 1990 (Cont'd.)

LAST	FIRST	ADDRESS	YR.	PHONE	SAIL #
Nielsen, Barbara & Jack,		136 Mariners Way, Copiague	86	842-9169	1395
Nierenberg, Benjamin & Mary Ann,		243 Sequams Lane Ctr., West Islip	82	669-8017	2202
Novak, Lawrence & Irene,		246 Marilyn Street, East Islip	86	277-9201	46
Nylund, Richard & Elizabeth,		17 Cockenoe Avenue, Babylon	84	661-5577	137
O'Connell, Martin,		511 17th Street, West Babylon	88	957-2331	1227
O'Connell, Thomas F. & Susan,		19 Robbins Avenue, Babylon	79	587-7375	6744
O'Hagan, Kevin P. & Jo Ann,		47 Bay Drive, Massapequa	87	799-9052	729
O'Malley, Charles H. & Gloria G.,		23 Neville Street, Center Moriches	90	878-4482	1530
O'Reilly, Leo & Margaret,		45 Claremont Street, Deer Park	81	667-0919	379
Olsen, Robert W. & Carole,		631 Peter Paul Drive, West Islip	79	669-8371	669
Orr, Louis H., Jr. & Libby,		157 Sequams Lane, West Islip	52	669-2841	2728
Osmun, Richard & Dorothy,		193 Suydam Lane, Bayport	85	472-1385	1109
Padden, Kevin & Loretta,		33 Litchfield Avenue, Babylon	89	661-7958	4830
Pallotta, John A. & Sigrid,		28 Garner Lane, Bay Shore	77	665-8892	33978
Parillo, Louis F. & Marisa,		123 Arbour Street, West Islip	77	586-8063	586
Parker, Charles W. & Linda M.,		105 Cleveland Street, Bay Shore	77	968-8632	345
Parker, Rev. Richard & Grace,		12 Hampton Road, Port Washington	68	883-1880	77
Pascucci, Richard & Lori,		440 Bay 4th Street, West Islip	86	661-8814	440
Passeggio, Dr. John & C. Dede,		Edward Bentley Road, Lawrence	86	239-1507	256
Paterson, George,		250 West Merrick Road, Apt. 3Q, Freeport	87	546-1198	1441
Paterson, Maggi,		43 Cormack Court, Babylon	53h	669-1710	
Patin, Paul J. & Priscilla,		40 Bergen Lane, Blue Point	77	363-9069	391
Pawloski, Raymond & Kathleen,		114 Midway Street, Babylon	79	321-7266	1276
Pearsall, Cary & David,		97 Norman Avenue, Amityville	75	264-0872	8987&33712
Pearson, Alex & Ann,		31 Ocean Avenue, Bay Shore	59c	665-0908	78
Penn, Thomas L. & Linda,		25 Willow Avenue, Islip	83	277-5980	225
Penny, Stephen L. & Edie Louise,		10 Secatogue Lane, West Islip	86	661-5952	7700
Perlmutter, Al & Eve,		2961 Hewlett Avenue, Merrick	87	623-9767	328
Perry, Joan C.,		180 Suydam Lane, Bayport	68	472-4963	215
Peters, Dr. Andrew & Frances,		45 Wright Road, Rockville Centre	79	766-6766	87
Peterson, Ronald B. & Jean,		344 Seville Blvd., Sayville	68	567-9436	Power
Petroske, Edward & Joan,		34 Dartmouth Drive, Deer Park	74	586-9509	100
Petrovich, Alexander & Janice,		823 Venetian Blvd., Lindenhurst	89		342
Pettit, Roger A. & Margaret,		281 Ocean Avenue, Lynbrook	85	599-8390	629
Pfister, Len,		135 Edwards Avenue, Sayville	84	567-2778	638
Picciano, John & Susan,		28 Suydam Drive, Melville	87	423-2341	541
Pittman, Barry & Michelle,		419 Potter Blvd., Brightwaters	83	666-6572	10987
Post, Henry A.V. & Marguerite,		44 Davison Lane East, West Islip	51c	669-5655	86
Poulos, Thomas J. & Bernadette,		171 Driftwood Drive, West Islip	80	661-4143	146
Provenz, Arthur & Diane,		24 Helene Avenue, Merrick	82	868-2918	232
Pruden, Norman,		38 Beechwood Avenue, New Rochelle	82	235-3071*	1157
Pruden, Dr. Peter,		253 Melbury Road, Babylon	82	661-5708	1157
Ramsdell, Roger & Isabelle,		28 Walnut Avenue, Rockville Centre	57c	766-2294	24
Ramsden, Stanley & Arlene,		419 Richland Boulevard, Brightwaters	87	665-6639	567
Rapps, Howard & Linda,		24 Lucinda Drive, Babylon	81	422-3969	188
Raskin, Walter & Sylvia,		251 Helm Lane, Bay Shore	81	666-2596	4230
Reardon, Eugene M.,		31 West Lane, Bay Shore	63	968-5082	5174
Regan, John J. & Peggy,		3 Chase Lane, Sayville	68	567-1549	155
Reichel, David K. & Judie,		18 Radcliff Lane, S. Farmingdale	77	249-4638	265
Reichel, James D.,		18 Radcliff Lane, S. Farmingdale	89	249-4638	42370
Reilly, John T. & Kathleen,		1 Hallett Court, Blue Point	85	363-5173	41318

*Outside 516 Telephone Area

MEMBERS — South Bay Cruising Club — 1990 (Cont'd.)

LAST	FIRST	ADDRESS	YR.	PHONE	SAIL #
Reinhard, Albert & Sue,		2 Delta Road, Massapequa	75	799-3066	901
Rettaliata, Jeffrey W.,		82 Shore Lane, Bay Shore	84	666-9241	88 & P
Rettaliata, Peter & Mary,		5 Garden Place, Bay Shore	87	666-9087	914
Revella, Parker & Deborah,		6 Longleaf Lane, Medford	85	654-1297	37
Rising, Albert E., Jr. & Niel,		103 West Concourse, Brightwaters	69	665-6712	Power
Robertson, Norman & Doris,		67 Bayway Avenue, Bay Shore	80	666-4429	288
Rock, Alvah O. & Susan,		5 Athena Ct., W. Islip	82	661-3857	628
Rosenberg, Bud & Harriet,		377 6th Ave. North, Tierra Verde, FL	57c	867-2772*	
Rosenbusch, Richard & Brigitte,		24 Buchanan Avenue, Amityville	81	842-5058	760
Rothaug, Raymond J. & Jo,		469 Connetquot Avenue, Islip Terrace	89	277-5154	118
Rothburd, Dr. Jeffrey S. & Allyson,		5 Westwood Court, Dix Hills	84	462-5159	1153
Rottkamp, Bill,		768 Silver Lake Place, Baldwin	74	623-6229	1699
Rouse Jr., Robert G. & Shirley,		14 Carolee Court, West Islip	88	422-5939	1222
Rubin, Andrew,		P.O. Box 355, Brookhaven	87	286-9115	1156
Runestag, Leslie & Ellen,		46 Hill Drive, Glen Head	88	671-9395	568
Russo, Benjamin D. & Charron J.,		73 Benson Avenue, Sayville	79	589-6196	589
Ryan, James & Felicity,		74 Bay Way Avenue, Brightwaters	86	666-0754	93
Ryan, Ronald & Patricia,		133 Cedarhurst Avenue, Pt. Lookout	86	431-7460	7017
Ryzner, Robert & Joyce,		24 Westminster Road, Rockville Centre	85	536-9347	772
Saccio, Philip & Donna,		870 Church Street, Bohemia		567-5678	
Sachnoff, Jerry & Dorothy,		86 Stillwater Avenue, Massapequa	83	798-0648	91
Saganic, Romeo & Rosemary,		191 Wampum Lane, West Islip	80	587-3564	277
Sagarese, Charles & Concetta,		1 Mast Lane, West Islip	68	587-8675	382
Sagarese, Frank M. & Rosemarie,		50 Cedar Point Drive, West Islip	80	669-9163	1279
Sanalidro, Ronald & Ann,		82 Grassmere Avenue, Oakdale	82	589-2968	687
Sandgren, Brett & Michelle,		458 Coolidge Street, North Hempstead	88	486-5579	730
Saxe, John R. & Kathleen,		16 Elder Road, Islip	61	581-1291	4744
Schaefer, Laurence A. & Doris,		120 Wampum Lane, W. Islip	76	669-0374	308
Schairer, Lloyd A. & Marie,		7 Gen. McLean Drive, Bellport	83	286-1024	42655
Schaper, Ron & Suzanne,		21 Elder Road, Islip	87	277-3987	2016
Scharr, Ralph & Harriet,		3 Ridgewood Lane, Ft. Salonga	76	757-3253	617
Schecker, Edward J. & Mary,		3 Lewis Circle, Babylon	70	669-4633	371
Schielke, William & Dorothy,		20 Bayview Street, West, Massapequa	87	541-7364	738
Schlitt, James C. & Dianne,		83 Pittsburgh Avenue, Massapequa	85	541-3068	254
Schmahl, Wolfgang G. & Hertha,		21 Harbor Court, Copiague	76	842-9354	20126
Schnapp, Arthur C. & Blanche,		730 Floyd Street, Green Cove Springs, FL	78	284-7300*	273
Schnell, James & Laura,		Quarterdeck 72, New Bern, NC	80	636-3555*	32
Schneller, Greg & Mary,		337 Bay 3rd Street, W. Islip	82	587-6236	536
Schultz, Robert & Vi,		1 Eastgate Drive, Sayville	65	589-4175	457
Schultz, Russell H. & Doris,		249 Shadybrook Lane, West Islip	67	669-7682	337
Schulz, Peter F. & Gerry,		58 Timber Point Road, East Islip	88	277-1851	715
Schwarting, Gary,		36 Cilfton Drive, Patchogue	89	289-8515	114
Schwarting, Theodore & Mary,		108 Argyle Drive, East Islip	76	277-2013	742
Schwartz, Dr. Julian & Marion,		108 The Helm, East Islip	73	277-7070	1085
Schwartz, Dr. Robert & Diane,		160 West Bayberry Rd., Islip	80	277-0330	40999
Seidenberg, Everett,		61 South Carll Avenue, Babylon	55c	669-4930	Power
Seplov, Van & Jacqui,		130 Harbor Lane, Roslyn Harbor	87	621-7578	1000
Serra, Chuck & RoseMarie,		20 Frank Avenue, Farmingdale	75	249-8437	420

*Outside 516 Telephone Area

MEMBERS — South Bay Cruising Club — 1990 (Cont'd.)

LAST	FIRST	ADDRESS	YR.	PHONE	SAIL #
Sheppard, Robert J. & Carole,		167 Paulanna Avenue, Bayport	72	472-0099	200 & P
Sherwood, Richard B. & Dianne,		104 Lighthouse Road, Babylon	73	669-3568	443
Shyngle, Charles & Brenda,		20 West End Avenue, Brentwood	83	231-3029	231
Sicinski, Joseph G. & Anita,		38 Woodhollow Road, Great River	82	277-4104	130
Signorelli, Richard & Ann,		2 Van Roo Avenue, Merrick	86	379-3016	3016
Silbert, Dr. Mitchell & Shirley,		141 Anchor Lane, W. Bay Shore	69	666-2055	2020
Simmins, Edwin & Kathleen,		29 Muncie Road, West Babylon	89	422-0625	116
Sinsabaugh Doris,		6 Osage Court, Coram	85	474-2342	54
Skeffington, Cynthia A.,		11 Caledonia Avenue, Babylon	81	422-0027	
Smassonow, Bennett & Doree,		2 Garnet Place, Elmont	88	775-0082	340
Smith, Donald, Jr. & Christine,		64 Ocean Avenue, Bay Shore	86	665-8350	838
Smith, Hale & Claire,		6 Alden Road, East Rockaway	75	593-4427	346
Smith, Michael G. & Virginia,		328 Dolphin Lane, West Babylon	77	661-1106	2404, 934
Smith, Janet,		169 Sequams Lane Center, West Islip	h	661-2786	
Smith, Soren T. & Eleanor,		848 East Bay Drive, West Islip	54	669-3143	
Snyder, Robert & Laura,		190 West Islip Road, West Islip	71	587-7740	161
Soreil, Ronald & Barri,		25 Magellan Avenue, Kings Park	88	269-6505	98
Spatenga, Hugo & Patricia,		50 Sunset Drive, Sayville		589-6717	357
Spivack, Boris M. & Lois,		84 Handsome Avenue, Sayville	68	589-3629	442
Spivack, Douglas A. & Lynn,		272 Bayport Avenue, Bayport	86	472-3476	40865
Sprague, Wayne E. & Susan,		127 S. Penataquit Avenue, Bay Shore		665-4467	666
Starkie, Robert & Susan,		17 Biltmore Boulevard, Massapequa	87	797-4916	44
Steinert, Joachim & Renate,		19 Flicker Drive, Middle Island	78	924-5181	482
Stephani, Dmitri & Helen,		174 Sears Road, West Islip	66	669-9202	430
Sternfeld, Alfred DDS & Adelaide,		25 Lucinda Drive, Babylon	80	422-5133	883
Stevens, John & Dolores,		79 Benso Avenue, Sayville	88	567-8761	7766
Stevens, Richard & Barbara,		265 Shadybrook Lane, W. Islip	73		74
Stott, Mark L. & Karen Lee,		1450 5th Street, West Babylon	77	587-0152	11111
Strange, Kenneth Sr. & Marilyn,		196 Paulanna Avenue, Bayport		665-4467	666
Stuhler, Robert E. & June,		22 Brightwater Place, Massapequa	64	799-4457	1253 & P
Sullivan, George,		91 Concourse West, Brightwaters	80	666-9760	662
Swenson, Charles F. & Arlene,		15 The Sail, East Islip	80	277-9511	30156
Symons, William & Ricki,		P.O. Box 415, Amityville		264-6330	174
Tannenbaum, Irwin & Sydelle,		22 Mohawk Place, Massapequa	87	799-8707	127
Tarantino, John & Helen,		179 Kingston Boulevard, Island Park		432-8933	112
Taussig, Fred F. & Julie,		133 Palisade Ave., Englewood, NJ		568-2080*	4
Terceira, Ronald P. & Mary,		184 Seaman Avenue, Bayport	83	472-1530	31
Terry, Bruce R., Jr. & Linda,		2 Cub Court, East Patchogue	85	475-1415	545
Thayer, M. Whiting & Joyce,		3164 Rolling Road, Edgewater, MD	56c		45
Thomas, William E. & Nancy,		75 Stillwater Avenue, Massapequa	55	798-2349	170
Tierney, Arthur & Elise,		P.O. Box 353, Great River	85	277-6474	260
Titus, Walter L. III & Louise,		43 Wingam Drive, Islip	81	581-1492	615
Todd, Richard,		421 Harvard Road, Babylon	88	669-2049	1860
Tokar, Lawrence J. & Rachelle,		2397 Freeport Street, Wantagh	88	783-7727	2250
Tonkiss, Ace & Maria,		94 Anchorage Drive, W. Islip	76	422-1498	631
Tormey, Thomas & Alice,		804 Sandra Avenue, West Islip	87	661-1205	804
Toto, Paul & Kathleen,		80 Midway Street, Babylon	87	587-2808	1258
Towlen, Richard & Nancy,		903 South Country Road, Bellport	88	286-9583	480

*Outside 516 Telephone Area

MEMBERS — South Bay Cruising Club — 1990 (Cont'd.)

LAST	FIRST	ADDRESS	YR.	PHONE	SAIL #
Trella, Domenic G. & Fran,		30 Church Street, Islip	81	581-3690	7746
Tuffin, James & Grace,		4 Grace Court, Bay Shore	86	665-8190	43
Turner, Eugene E. & Margaret,		84 South Carll Avenue, Babylon	77	669-5271	270
Tyler, Thomas J. & Joyce,		23 Biltmore Blvd., Massapequa	83	541-2602	11657
Underhill, Katie,		14 White Birch Drive, Babylon	51	669-2911	
Valenzano, Annette,		166 Harding Street, Massapequa Park	82	799-5741	401
Van Name, Nancy,		59 Atlantic Avenue, West Sayville	86	567-7828	228
Van Nostrand, David & Jeanne,		14 Christopher Court, Babylon	79	669-8862	2808
Van Nostrand, Roy & Peggy,		66 E. Lake Drive, Amityville	66	691-6151	120
Van Tassel, Robert,		3 Sumpwams Avenue, Babylon	77	669-7344	24191
Van Vliet, Dr. Jetse,		6 Tuthill Street, Bellport	76	286-0832	71
Van Zanten, Martin & Marilou,		28 County Greens Drive, Bellport	89	286-9406	578
Vandervoort, Paula Johnston & Michael,		898 So. 6th Street, Lindenhurst	86	225-0346	40601
Vermaelen, Charles & Anne,		19 Canal Road, Massapequa	81	541-8398	191
Vetter, Robert E. & JoAnn,		75 Bayview Drive, Oakdale	89	589-8209	1181
Vieth, Gary E. & Victoria,		43 Lawrence Lane, Bay Shore	84	968-5396	20779 & P
Von Rhee, R. Edward & Dorothy,		89 Pittsburgh Avenue, Massapequa	81	798-5459	3019
Voos, Douglas & Lisa,		511 Lakeview Avenue, Bayport	87	472-1364	13409
Wagner, Edward R. & Carol,		220 Jayne Avenue, Patchogue	88	654-8752	179
Wallace, James J. Jr.,		28 Sequams Lane, West Islip	81	422-0003	1021
Warner, H. William III, & Kathy,		55 Concourse West, Brightwaters	80	666-7812	21674
Warsaw, Merritt & Maryellen,		308 Dolphin Lane, W. Babylon	85	587-8348	717
Weese, Bronson L.H. & Dorothy,		20 Pasture Lane, Levittown	86	731-5185	566
Weinberg, Howard & Sandy,		1199 Park Avenue, New York City 10128	86	289-0438*	573
Weiner, Robert & Lynne,		60 Weaver Drive #3, Massapequa	83	798-1078	25
White, Franklyn B. & Lenore,		4 Percy Williams Drive, East Islip	82	277-1879	21
Wieda, Alfred & Florence,		186 Clocks Boulevard, Massapequa	68	795-5246	331
Wiedersum, Frederic & Fairfax,		214 Captains Way, Bay Shore	72	665-8982	419
Wiehl, Jurgen R. & Rosalie,		145 Bergen Avenue, West Babylon	76	422-0635	413
Wilburger, Harry & Edna,		1162 Tulsa Street, Uniondale	87	486-8214	2661
Wilker, Jay & Midge,		50 E. 89th St., Apt. 29F, NY	82	860-0840*	2890
Wills, Richard & Anna Mae,		24 Smith Street, Babylon			Power
Wines, Gerald L. & Mildred,		87 Corey Avenue, Blue Point	85	363-2017	600
Wissmann, Robert & Charlotte,		104 Concourse East, Brightwaters	56	666-8340	66
Wolin, Irwin,		67 Pamoqua Lane, West Islip	84	661-1732	18
Wood, David, Jr. & Pat,		26 Secatogue Lane East, West Islip	68	661-4400	89
Woodhull, Richard M. & Virginia,		241 Durkee Lane, East Patchogue	75	475-3930	Power
Wrage, George E. & Dorothy,		51 Braham Avenue, Amityville	74	691-8506	Power
Wragge, John B.,		27 Bayview Lane, Amityville	54	264-0111	35
Wright, Richard,		118 Simmons Drive, East Islip	87	581-7821	223
Yaxis, Alexander G. & Vi,		29 Hamilton Street, Amityville	60	264-2153	125
Young, John F. & Jennie,		106 West Islip Road, West Islip	51c	669-1181	1090
Zambriski, Bill & Eileen,		159 Nathan Drive, Bohemia	86	567-0350	3593
Zimmer, Donald J. & Laurette,		3470 Homestead Avenue, Wantagh	67c	785-5246	222
Zimmerman, Frederick F. & Barbara,		33 Eaton Lane, West Islip	51	669-4547	10
Zipnick, Mort & Ruth,		2806 Clubhouse Road, Merrick	82	378-0732	579

*—Outside 516 Telephone Area

c—Past Commodores

h—Honorary Member

p—and Power Boat

SOUTH BAY CRUISING CLUB FLEET — SAILING AUXILIARIES

Sail #	Yacht	Owner	Rig	HCP	LOA	Draft	Model
1	Climax	D. Max	Sloop	149	38	3'8	Morgan
4	Thursday's Child	F. Taussig	M/S		51	4'5	S&S
6	Sparrow	E. Miller	Sloop	210	25	3'9	C&C
8	Hallelujah	R. Kanser	Sloop	140	38	4'6	Little Harbor
9	Betty	W. Menger	Cat	280	17	1'8	Menger
10	Teezim Too	F. Zimmerman	Ketch		32	3'5	Dickerson
11	MerriMac	B. MacGill	Yawl		32	3'6	Endeavor
14	Tuxn	G. Boulukos	Cutter		52'5	5'4	Robert Perry
15	Encounter II	W. McDonald	Sloop		27	3'3	Hunter
18	Dream Boat	I. Wolin	Sloop	192	28	4	Ericson
19	Summerwind	A. Brant	Sloop	186	34	3'3	Morgan
21	Time To	F. White	Cat		33	4'4	Nonsuch
22	Luff Affair	T. Garb	Cutter		27	2'8	Island Pkt
23	Manana	F. Holwell	Sloop		35	3'9	Pearson
24	Black Petrel	R. Ramsdell	Cutter		31	3'4	Irwin
25	Seascape	R. Weiner	Sloop	149	34	4'3	Hunter
26	Windchimes	W. Foyt	Sloop		26	3'9	Seafarer
31	Periwinkle	R. Terceira	Cat		25	1'3	Marine Inno
32	Sunchaser	J. Schnell	Sloop		32	1'6	Southerly
33	Edie Lady	T. Kettel	Cat	280	17	1'8	Menger
35	Sea Jay	J. Wragge	Sloop	221	27	3'4	Tartan
37	Deja Vu	P. Revella	Sloop		31	3'11	Pearson
39	Emerald Seas	F. Cornman	Sloop	170	31	4	Tanzer
42	Cymoril	G. Bottino	Sloop	137	38'8	4'6	Bristol
43	Nereid	J. Tuffin	Sloop	260	25	3'5	Cape Dory
44	Liberty	R. Starkie	Sloop		26'7	3'3	Tanzer
45	Skylark	W. Thayer	M/S		40	3	Custom
46	Windstar	L. Novak	Sloop		33	4	Irwin
48	Fiona	E. Forsyth	Cutter		42	6	Westsail
52	Stimulus	J. Buckman	Sloop		28'3	3'9	Cal
54	Bahama Star	D. Sinsabaugh	Sloop		25	2'6	Bayfield
57	Stardust	J. Ferguson	Sloop	176	30	3'4	Tartan
58	Pursuit	B. Eitapence	Sloop	150	29'10	4'6	S-2
59	Snowgoose	R. Garben	Yawl		35	3'10	Allied Seabreeze
62	Slim	H. Hamstra	Sloop	221	27	3'4	Tartan
66	Realization	R. Wissmann	Cutter		44	5	CSY
67	Tuono	P. Ljungqvist	Sloop	232	27	2'11	O'Day
68	Memory	F. Heess	Sloop		33	3'7	Swiftsure
70	SeaFox	K. Goodwin	Sloop		27	4	Cape Dory
71	Squire	Dr. J. VanVliet	Schnr		32	2'10	Hermann
73	Antiqua	F. Gauch	Ketch		33	3	H.G. Smith
74	Brigadoon	R. Stevens	Cutter		40	5'3	Passport
77	Charisma	Rev. Parker	Sloop		32	3'6	Bristol
78	Buccaneer	A. Pearson	Sloop	160	35	4'8	Morgan
81	Gypsy	R. Carl	Sloop		21	3	Ketchum
85	Ziggy Stardust	L. Goetz	Sloop	176	35	3'9	Pearson
86	Yankee Doodle	H. Post	Sloop		25	2'6	Bayfield
87	Estelle	Dr. A. Peters	Sloop	132	41'1	4'6	Bristol
88	Mystique	J. Rettaliata	Sloop	152	35'6	3'9	Bristol
89	Patty Wagon	D. Wood	Sloop		31	3'3	Irwin
91	Xanadu	J. Sachnoff	Sloop	228	25	2'8	Morgan
92	Pato Loco	P. Lightstone	Sloop		37'6	4'9	Hunter
93	What Me Worry	J. Ryan	Sloop	183	22	4	J-22
95	Big Joe	J. Archer	Sloop	239	30	2.8	Island Packet
96	Kitty K.	B. Kleisler	Sloop		28	1	E. White

SOUTH BAY CRUISING CLUB FLEET — SAILING AUXILIARIES (Cont'd.)

Sail #	Yacht	Owner	Rig	HCP	LOA	Draft	Model
98	Duet	R. Soreil	Sloop		31	3'11	Pearson
99	Lady Lynn	L. Kondor	Sloop	200	30	3'6	Wanderer
100	Jubilation	E. Petroske	Sloop	120	40	5	Hunter
101	Warlock VI	S. DeLise	Sloop	182	27	4'10	C&C
102	Last Fling	Dr. T. Hangarter	Sloop	230	28	2'2	Kelt
103	Crush	T. David	Sloop	210	24	4	Pearson
107	Aquaries III	C. Carlson	Sloop		28	4	Dufour
109	Nancy B	L. Leopold	Sloop		24	4'	C&C
110	Firstlight	L. Lowy	Sloop		30	4	Newport
112	Ebb Tide	J. Tarantino	Sloop		22	2	Herman
114	Obsession	G. Schwarting	Sloop	168	25	4'	Capri
115	Wanderlust	R. Holzmacher	Yawl		45	4'3	Custom
116	Chaitlin	E. Simmins	Sloop	258	26	2'4	Tripp
118	Saga II	R. Rothaug	Sloop		26'7	4'6	AMF Paceship
119	Sara Jane	N. Berhannan	Cat		18	1'5	Marshall
120	Lorna Doone	R. VanNostrand	Sloop	192	33	3	S & S
122	Sea Witch	R. Ernst	Schnr	228	32	2'10	Hermann
123	Aftermath	W. Briesmeister	Sloop		23	2	Columbia
125	Vi	A. Yaxis	Ketch	235	28	3'5	H-28
127	Bat Yam IV	I. Tannenbaum	Sloop		33	4	Pearson
130	Shangri-La	J. Sicinski	Sloop		40	5	Endeavour
132	Reverie	B. Bacci	Sloop		28	3'9	Cal
136	HMS Bel Ami	P. Jimenez	Sloop		28	3	Morgan
137	Katie E	R. Nylund	Sloop	232	22'6	3'5	Tanzer
139	Bewitcher	C. Heckel	Sloop	270	22	3'11''	Tartan
140	Morika	R. Barth	Sloop		27	4	Catalina
142	Swan	J. Kracht	Sloop		34	4'3	Hunter
144	Brigadoon	W. Eilbeck	Sloop	260	24'7	3'5	Bristol
146	Second Edition	T. Poulos	Sloop		29'9	4	Watkins
150	Passing Fancy	H. Clemons	Sloop		32	3'6	Endeavor
151	Good Wind	H. Goodwin	Sloop		31'1	3'6	Bristol
155	'R-Tern	J. Regan	Sloop		27	3'8	Newport
161	Resolute	R. Snyder	Sloop	259	25'7	3.8	Pearson
162	Cro's Nest	G. Bodkin	Ketch	180	36	4'6	Allied
163	Happy Days	B. Fuechtmann	Sloop		26	2'9	Irwin
165	Mallard II	E. Kennelly	Sloop		32	3'5	Fales
166	Papillon	J. Hallam	Sloop	192	30	4	Laguna
167	Kinship	S. Greenfield	Sloop		39	4.3	C&C
168	Jolly Jack	J. Hollis	Sloop	302	26	3	Snapdragon
169	Overdue	D. LeMaitre	Sloop		28	3	Irwin
170	Second Wind	W. Thomas	Sloop	208	28	2.11	Soverel
171	Jeannie	L. Deutsch	Sloop		33	4'6	Tartan
173	Turning Point	M. Lesser	Sloop		40	3	Catamaran
174	Deliana	W. Symons	Sloop		30	1'5	Iroquois
176	Resistance	R. Dunlop	Sloop	193	30	3'6	Wanderer
178	Flying Cloud	E. Kissenberth	Sloop		29'9	3'6	Bristol
179	Sunshine	E. Wagner	Sloop	159	31	3'11	Pearson
181	Time Flies	M. Gurak	Sloop		31	3'9	Pearson
183	Curlew	D. MacDonell	Sloop	180	34'7	4	Irwin
184	Conchetta	C. Hedde	Sloop		26	3'0	Polaris

SOUTH BAY CRUISING CLUB FLEET — SAILING AUXILIARIES (Cont'd.)

Sail #	Yacht	Owner	Rig	HCP	LOA	Draft	Model
185	Aerie	J. Grover	Sloop	173	28	3'11	Tartan
188	Spray Maker II	H. Rapps	Sloop	170	30	3'4	Tartan
190	Salty C's	Dr. J. Canning	Sloop		24	2	Seaward
191	Perry	C. Vermaelen	Sloop		33	3'5	Swiftsure
192	Nova	R. Canino	Sloop		26	2'6	Thames
199	KristiKim	M. Hoffman	Sloop		30	4	Laguna
200	Magic	R. Sheppard	Sloop	172	33	4	Pearson
201	Nevermore II	W. Ludlum	Sloop	213	24'7	3	Mark 25
202	Andros	J. Katsikis	Sloop		31	4'6	Hunter
203	Barcarolle	M. Goldsmith	Sloop		41	4'2	Morgan
204	White Cloud	J. Cahill	Sloop		28	3	Morgan
208	Rio	C. Bollman	Sloop		30	3'8	Grampian
210	Seastar	C. Hoyler	Sloop	240	28'6	4	Triton
215	Nimble	J. Perry	Gaff		18	1'6	Sanderling
219	Red Baron	E. Kaiser	Sloop		30	4	Easterly
220	Merry Ann	W. Cook	Sloop	175	27	4	Soverel
222	Utopia	D. Zimmer	Sloop	186	34	3'3	Morgan
223	Waverider	R. Wright	Sloop	288	22	2	O'Day
225	Moondance	T. Penn	Sloop	210	25	4'3	C & C
226	Jackie M.	F. Merklin	Sloop		25	2'3	O'Day
228	Purr Box	N. Van Name	Cat		17	1'6	Menger
231	Tomorrow's Dream	C. Shyngle	Sloop		25	2'6	O'Day
232	Camelot	A. Provenz	Sloop		31	3'1	Columbia
234	Tortuga	R. Coroneos	Sloop		25	2'4	O'Day
241	Wink	D. Woodhull	Sloop		18	2'2''	Cape Dory
242	Falcon	A. Heckel	Sloop	150	35'5	3'9	Bristol
243	Happiness Is	N. Heckel	Sloop		22	2'3	Sailmaster
245	Theophilus	W. Gallagher	Sloop		27	3'5	Hunter
251	Aeolus III	P. Dauzickas	Yawl		32	3'6	Bristol
253	Bliss	T. Faas	Sloop		26	2'6	O'Day
254	Pzaz	J. Schlitt	Sloop		30	3'6	O'Day
256	Apollonia IV	J. Passeggio	Schnr		32	3	Brewer Herman
260	Pursuant	A. Tierney	Sloop	176	35	3'9	Pearson
263	Constellation	J. Bogan	Cutter	234	30	3'8	Island Packet
265	Mariah	D. Reichel	Sloop	218	27'7	3'4	Bristol
269	Bonnie Mood	L. Dowling	Sloop		33'6	5	Moody
270	Independence	E. Turner	Sloop	221	27	3'4	Tartan
273	Blanche L III	A. Schnapp	Sloop		30	4	Hunter
277	Adria	R. Saganic	Sloop	221	27	3'4	Tartan
281	Ellen	J. McInerney	Sloop		31	3'3	Corvette
283	Kariana	D. Krug	Sloop	171	34	4	Irwin
285	Happy Traveler	J. Kaufman	Sloop		28	4	S 2
288	Kerriann	N. Robertson	Sloop	162	34	3'11	Sabre
292	Feather	T. Dauch	Sloop	272	24	3'4	Corsair
297	Aeolus	D. Graham	Sloop	200	30	3'6	Wanderer
298	Raclette	R. Hollis	Ketch	200	36'5	4'5	Pearson
305	Incredible	J. Larmor	Sloop	220	30	2'4	Bombay Expr
308	Cu Mara	L. Schaefer	Sloop		33	4'5	Endeavor
311	Sea Pearl II	J. DeLuca	Sloop	194	30	3'6	Morgan
312	Apocalypse	W. Johnston	Sloop		27	3'4	Watkins
318	Windquest	C. Margeson	Sloop	186	34	3'3	Morgan
320	'Glas Menagerie	B. Kennedy	Sloop	196	31	3'3	Corvette
322	At Last	C. Hartzell	Sloop		27'1	4	Cape Dory

SOUTH BAY CRUISING CLUB FLEET — SAILING AUXILIARIES (Cont'd.)

Sail #	Yacht	Owner	Rig	HCP	LOA	Draft	Model
325	Batyam	M. Heller	Sloop		34	3'3	Morgan
327	Nola	D. Jackson	Sloop		27	3'0	Tartan
328	Sea Roar	A. Perlmutter	Sloop		34	3'6	Morgan
331	Sea Sprite	A. Wieda	M/S		32		Grampian
335	Colleen	F. Horn	Sloop		27	1'7	Irwin
336	Shamrock III	G. Ginty	Cutter		32	4'5	Bayfield
337	Doris Ann	R. Schultz	Sloop		35	3'9	Pearson
340	Aeolus	B. Smassonow	Sloop		34	4'5	O'Day
342	Barba	A. Petrovich	Sloop		24		Flica
344	Irish Clan	R. Dean	Sloop	202	27	4'3	C&C
345	Charlynn	C. Parker	Sloop	149	34'5	4'3	Hunter
346	Sunriser	H. Smith	Sloop	242	22'5	2	Tanzer
347	Blithe Spirit	P. Knott	Sloop		33	5	Cape Dory
354	Becky	C. Becker	Sloop		30	3'6	O'Day
357	Bravo	H. Spatenga	M/S		52	4'4	Custom
360	Wild Blue II	A. Mulle	Ketch	238	30	4	Allied
366	Intuition	R. Hoernel	Ketch		39	5'8	Sampson
369	Nepenthe	R. Kapell	Sloop	208	29	3'3	Grampian
371	Horizons	E. Schecker	Yawl	186	35	3'9	Bristol
379	Aisling	L. O'Reilly	Sloop		25	2'6	O'Day
382	Don Quixote	C. Sagarese	Sloop		28	4	Newport
385	Vera	Dr. M. Gorin	Sloop		26	3'6	Grampian
388	Quadrant	H. Langley	Sloop		22	2	Herman
390	No Phones	R. Bernstein	Sloop		31	3'11	Pearson
391	Cultured Vulture III	P. Patin	Sloop	176	35	3'9	Pearson
395	Bionator	M. Goodman	Sloop	179	29	3'3	C & C
401	Joey V.	A. Valenzano	Sloop	250	25	2'6	Buccaneer
403	Loki	D. Gardner	Sloop		28	3	Irwin
413	Karma	J. Wiehl	Sloop	176	35	3'9	Pearson
418	Roundtrip III	D. Browne	Sloop		25'9	2'7	Seafarer
419	Illusion	F. Wiedersum	Cat	175	30	4	Nonsuch
420	Gypsy Rose	C. Serra	Sloop		40	4'4	Bristol
421	Amethyst	D. Davies	Sloop	123	27'5	4'11	J-27
422	Essence of Pleasure	J. Milano	Sloop	174	29	4	Tanzer
423	Sea Dream	W. Dunleavy	Sloop		28	4'2	Newport
430	Lena	D. Stephani	Sloop	217	27	3'4	Tartan
433	Lapaix II	D. Boyd	Ketch		33	3'8	Cheoy Lee
440	Lori II	R. Pascussi	Sloop		29'11	3'6	O'Day
441	Black Magic II	K. Black	Sloop		30	5'3	Castalina
442	Wilde Thyme	B. Spivack	Sloop	221	27	3'4	Tartan
443	Whisper	R. Sherwood	Sloop		29'9	3'6	Bristol
444	Aleta	W. Applegate	Sloop	218	25	4'3	Kelt
447	Liesel	A. Lake	Cutter		32	3'9	Bayfield
450	Shorebird	T. Madigan	Sloop		26	4	Pearson
452	Genesis II	A. Bergenn	Sloop		27	3'6	Hunter
457	Fairwind	R. Schultz	Sloop		35	3'9	Pearson
460	Rhapsody	E. Hettinger	Sloop		35'5	3'9	Bristol
464	Reliance	D. Ketcham	Cutter		32	5	West sail
469	Arctic Tern	C. Harris	Sloop	220	28	3	Irwin
477	Dove II	M. Levee	Sloop		27	2'3	Buccaneer
479	Uptick	D. Leiman	Sloop	185	29	4	C&C
480	"R" Pleasure	R. Towlen	Ketch		48	5'7	Sunward
482	Coppelia	J. Steinert	Sloop		30	4	Newport
501	Sundancer III	R. Navickas	Sloop		42	5'2	Pearson

SOUTH BAY CRUISING CLUB FLEET — SAILING AUXILIARIES (Cont'd.)

Sail #	Yacht	Owner	Rig	HCP	LOA	Draft	Model
503	Mis-Jef	L. Natale	Sloop	198	27'6	4'4	Mirage
514	Majic Moments	K. Keller	Sloop	219	25	2'8	U.S. Yachts
524	Stardust	M. Gargiulo	Sloop	198	27'6	3'6	Mirage
536	Mirage	G. Schneller	Sloop	210	26	4	Pearson
537	Bitter End	R. Hoey	Sloop		23	4	San Juan
541	Windhover II	J. Picciano	Sloop		27	3'2	Tartan
542	Seeker	B. Giannott	Sloop	228	27	3'11	Ericson
543	Scream'n Re	H. Blum	Sloop	141	35'5	4'6	Hunter
544	Proteus	H. Freudenthal	Schnr		32	3	Hermann
545	Chubby Cheeks	B. Terry	Sloop	207	28'3	3'8	O'Day
549	Exeter	Rev. McCarthy	Sloop		27	3'4	Tartan
555	Renarde	W. Aubin	Sloop		33	3'6	Swiftsure
566	Emily Alice	B. Weese	Ketch		26	2'4	BRBY
567	Shikari	S. Ramsden	Sloop	192	30	4	Hunter
568	Les 'Elle	L. Runestag	Sloop		24	2'8	American
573	Oz	H. Weinberg	Sloop	182	26'6	3'6	C&C
578	Clepsydra	M. VanZanten	Sloop		25	3	Kelt
579	Adventure	M. Zipnick	Sloop		27	3'3	Hunter
586	Partenope	L. Parillo	Sloop	226	24	4	C & C
587	Cachalot	J. Meehan	Sloop	178	30	4	Newport
589	Compulsion	B. Russo	Sloop	198	32	3'6	Endeavor
600	Wind Seeker	G. Wines	Sloop	270	23	4'6	Kells
615	Spirit	W. Titus	Sloop	250	26	3'10	Bristol
617	Rakamah	R. Scharr	Sloop	129	36	4'2	C & C
621	Moonraker	B. Martorana	Sloop		35'5	3'9	Bristol
622	New Wave	W. Doscher	Sloop		27	4	Erickson
625	HS Kathleen L	J. Layton	Ketch		44	4'8	Brewer
628	Nessie	A. Rock	Sloop	170	30	3'4	Tartan
629	Witchcraft	R. Pettit	Sloop		22	2	Hunter
631	Tizona	A. Tonkiss	Sloop		27	3'4	Tartan
636	Miracle	J. Good	Cutter		32	3'9	Bayfield
638	Magic Beans	L. Pfister	Sloop		24	2	Colombia
641	Decatur II	A. Lovito	Sloop	190	30	3'6	Morgan
662	Innisfail	G. Sullivan	Sloop	221	27	3'2	Tartan
666	Dulcinea	W. Sprague	Sloop	196	30	3'6	Wanderer
668	Sanderling	R. Nehring	Sloop		33	3'6	Swiftsure
668	Sanderling	T. Nehring	Sloop		33	3'6	Swiftsure
669	Kittiwake	R. Olsen	Cutter		37	4	Hunter
670	Dickens	R. Burns	Sloop	213	22	0'10	S-2
671	Le Cygne Noir	D. Gardner	Sloop		28	2'6	Rhodes
675	Shoot'n The Breeze	R. Czach	Sloop	180	35	4	Hallberg Rassy
684	Sea Wind	T. Cramer	Sloop		33	4	Hunter
687	Summer Whim	R. Sanalidro	Sloop	168	35	4'3	S-2
700	Latest Addition	G. Keenan	Sloop	183	22	3'7	J-22
700	Latest Addition	G. Keenan	Sloop	176	32	4'3	Vision
701	Dotty Ann	R. Benedict	Sloop		29'9	3'6	Bristol
705	Zephyr	A. Fledman	Sloop	191	29'9	3'6	Bristol
712	Mistress	J. Jeffers	Sloop		27	3'3	Hunter
715	Runaway Too	P. Schulz	Sloop	245	24	2	Seafarer
717	Broadbill	M. Warsaw	Sloop		30'3	3'6	Wanderer
725	Blaze	R. LaBella	Sloop	175	30	4'4	C&C
729	Curragh	K. O'Hagan	Sloop	180	29	4	Tanzer
730	Enchanted	B. Sandgren	Sloop		30	5	C&C
732	Busman's Holiday	S. Brice	Sloop	194	28	3'9	S-2
738	Challenger	W. Schielke	Sloop		30	4	Hunter

SOUTH BAY CRUISING CLUB FLEET — SAILING AUXILIARIES (Cont'd.)

Sail #	Yacht	Owner	Rig	HCP	LOA	Draft	Model
739	Cheerio	J. McKeen	Sloop		30	3'5	Morgan
742	Friendly Persuasion	T. Schwarting	Sloop	185	30	4	Newport
759	Brokher	A. Eppig	Sloop	210	25	4	C&C
760	Ladybug	R. Rosenbusch	Sloop	252	23	2'3	O'Day
772	Decision	R. Ryzner	Sloop	181	30	4'3	Hunter
776	Tachyon	D. Cameron	Sloop	191	29'9	3'6	Bristol
804	Seaduced	T. Tormey	Sloop		30	4	Hunter
818	Jacqueline II	R. Forman	Sloop	145	38	3'8	Morgan
822	Sunshine	V. Kind	Sloop	210	25	3'8	C&C
828	Skoal	J. McMahan	Sloop	210	30'4	4'3	Grims & Killens
838	Winter's Tale	D. Smith	Sloop	181	30	4	Hunter
853	Shamu	T. Jewell	Sloop		30	5	Pearson
870	Alone At Last	P. Halpin	Sloop		34	3'10	Catalina
879	Never Say Never	S. Etimos	Sloop	192	27	3'4	Pearson
883	Hey Ad	A. Sternfeld	Sloop		30	4'3	Hunter
888	Outlaw	A. James	Sloop	159	32'2	4'2	O'Day
901	Mouette	A. Reinhard	Sloop		33	3'5	Swiftsure
903	Cat's Paw	B. Blossom	Sloop	274	22'6	3'0	Sea Sprite
914	Kittiwake	P. Rettaliata	Sloop		26	4	Pearson
917	Elan	Dr. P. Aries	Sloop	144	37	4'6	Beneteau
930	Curragh	T. McClone	Sloop	221	27	3'4	Tartan
934	White Squall	M. Smith	Sloop	260	23	3	Ensign
999	Catharsis	L. Christiansen	Sloop	187	30	4	Irwin
1000	Magic	B. Finkle	Sloop	210	26	4	Pearson
1001	Unicorn	L. Casey	Sloop		30	4	Ericson
1010	Nirvana	R. McGinty	Sloop		24	4	Helms
1012	Never Again II	R. Colombo	Sloop	120	40	5	Hunter
1021	Christic	J. Wallace	Sloop	210	26	4	Pearson
1061	Dauntless	W. Lapp	Sloop	262	26	2'4	Polaris
1085	Wandelaar	Dr. J. Schwartz	Ketch	168	42'4	5'3	Pearson
1090	Courtesan	J. Young	Yawl		42'5	5	C&C
1100	Vantsea	V. Seplow	Sloop		34'7	4	Irwin
1101	Wild Goose	J. Glynn	Sloop		34	3'6	Morgan
1109	Bravo	R. Osmun	Sloop		29'11	3'6	Bristol
1115	Felicity	R. Engel	Sloop	194	30	3'6	Morgan
1121	Ailanthus	W. Grauer	Sloop	210	26	4	Pearson
1125	Wild Rover	J. Ferguson	Sloop	132	33	4'6	Tartan
1127	Judiann	B. Flett	Sloop		25	4	Catalina
1128	Juniper	J. Istel	Sloop		35	3'8	Pearson
1133	Antares	R. Coleman	Sloop	196	30	3'6	Wanderer
1137	Family Ties	R. McGrath	Sloop	243	26	2'6	O'Day
1146	Fiesta	K. Meinking	Sloop		30	3'6	Morgan
1149	Bon Homme Richard	R. Muhr	Sloop		27	3'4	Pearson
1153	Adrienne	Dr. J. Rothburd	Sloop		30'3	3'6	Pearson
1156	Walkabout	A. Rubin	Sloop		31	3'3	C&C
1157	Huntress	Dr. P. Pruden	Sloop	168	24	4	J-24
1157	Huntress	N. Pruden	Sloop	168	24	4	J-24
1161	Leprechaun	D. Connor	Sloop	198	30	3'6	Wanderer
1181	Dragon's Den	R. Vetter	Sloop		34'4		Island Packet
1185	Anjin	W. Burke	Sloop	198	29'9	3'6	Bristol
1204	Counterpoint	J. Becker	Sloop	180	30'5	4'4	Pearson
1215	Integrity	W. John	Sloop		33	3'3	Swiftsure
1220	Voyager	M. Fishman	Sloop		35'5	3'9	Bristol
1222	Me-N-Thee	R. Rouse Jr.	Sloop	243	25'8	2'6	O'Day
1225	Knee Deep	J. Chapey	Sloop	180	29	3'7	Elite

SOUTH BAY CRUISING CLUB FLEET — SAILING AUXILIARIES (Cont'd.)

Sail #	Yacht	Owner	Rig	HCP	LOA	Draft	Model
1227	AKA Sea Slug	M. O'Connell	Sloop	221	27	3'2	Tartan
1242	Four C's	W. Christopher	Sloop		30	1	Tylerbuilt
1253	Flicka	R. Stuhler	Sloop		30	5'4	Catalina
1260	Silhouette	T. Gotard	Sloop	193	33	3'5	Swiftsure Cmdr.
1276	Chaconne	R. Pawloski	Sloop		27	3'9	Ericson
1279	Fast and Easy	F. Sagarese	Cat	171	27	3'10	Herreshoff 31
1312	Luff "N" Stuff	H. Courten	Sloop		29'11	4	Hunter
1321	Enchanted	S. Fili	Sloop		30	3'8	Island Packet
1351	Pimingo	J. Drabkin	Sloop		22'3	2'3	Seafarer
1371	Oriana	M. Milligi	Sloop	210	32	3'9	Melody
1382	Rapture	B. Ladden	Sloop		30	3'11	O'Day
1395	Lady Barbara	B. Nielsen	Ketch		37	4'6	Endeavor
1425	Ginger Snap II	J. Burnup	Sloop		31	4	Allmand
1441	Heather	G. Paterson	Sloop		27	3'3	Hunter
1457	Firewater II	G. Baldwin	Sloop	210	25	4.6	C&C
1457	Firewater II	D. Crocker	Sloop	210	25	4'6	C&C
1461	Papillon	D. Hall	Sloop	242	22'6	4	Tanzer
1480	Runway	S. Hughes	Sloop	168	26	5	S-2
1518	True Love?	L. Becker	Sloop	258	22	1'8	O'Day
1530	Gloria	C. O'Malley	Sloop		28'5	3'3	Irwin
1531	Adorna	W. Husing	Sloop	210	27	3'3	Tanzer
1555	Decision	T. Faber	Sloop		30	3'4	Tartan
1661	Mystic	K. Stranger	Sloop		24'2		Sparkman
1681	Nifty	C. Huberman	Sloop	200	30		Wanderer
1699	Patience	B. Rottkamp	Sloop		22	1'8	Catalina
1714	Wind Call	E. Dew, Jr.	Sloop		34'3	4	Irwin
1759	Aw-Gust	B. August	Sloop		25		Coronado
1770	Nephele	R. Goodwin	Sloop		30	3'6	Wanderer
1855	Carefree	R. LaTorre	Yawl	190	35	3'9	Allied
1860	Golden Goose	R. Todd	Sloop		23	4	Olympic
1936	Perseverance	R. Merz	Sloop		26	3'6	S2
1983	Quicksilver	J. Montiel	Sloop		24'4	3'6	Starboard
1991	Peter Pam	P. Murphy	Sloop		22'6	3'5	Tanzer
2016	Bagheera	R. Schaper	Sloop	164	40	4	Bristol
2020	Golden Days	M. Silbert	Sloop		30	3'11	Cape Dory
2041	Holder Tight	K. Black	Sloop	180	20'6	3'7	Holder
2141	Swallow	B. Fenner	Sloop		27	3'10	Albin
2180	Cygnus	M. Lucivero	Sloop		28	3	Irwin
2185	Psyche II	Dr. Cohen	Sloop		30	4'6	Catalina
2202	Rhapsody	B. Nierenberg	Sloop	210	25	4'3	Kelt
2221	Prim	D. Hilgendorf	Sloop	248	24	2'10	Dolphin
2250	Twenty Two Fifty	L. Tokar	Sloop	252	23	2'3	O'Day
2404	Yellowbird	M. Smith	Sloop	126	40	4'9	Crusader
2420	Whisper	D. Brown	Sloop		30	3'5	Morgan
2484	Hydrotherapy	M. Kohl	Sloop	142	39	4'8	Pearson
2641	Seanachie	J. Leddy	Sloop	180	30	3'6	O'Day
2661	Jemaren II	H. Wilburger	Sloop	221	27	3'2	Tartan
2700	Destiny	J. French	Yawl		35	4	Allied
2712	Carolina	A. Davies	Sloop	200	30	3'6	Wanderer
2728	Loon	L. Orr	Yawl	175	35	3'9	Pearson
2808	Gliding Gull	D. Van Nostrand	Sloop	196	31	3'3	C&C
2890	Snow Goose	P. Wilker	Sloop		31	3'3	Corvette
3016	Calypso	R. Signorelli	Sloop		28	4	Newport

SOUTH BAY CRUISING CLUB FLEET — SAILING AUXILIARIES (Cont'd.)

Sail #	Yacht	Owner	Rig	HCP	LOA	Draft	Model
3019	Whisper	R. Von Rhee	Sloop		22	1'3	O'Day
3111	Sweet Decision	W. Fleischman	Sloop		32	4'5	Ericson
3118	Fare Thee Well	J. Hessel	Sloop		30	5'2	Catalina
3222	Wing It	T. McNamee	Sloop	159	32	4'3	O'Day
3301	Quest	R. Cresci	Sloop		33	4	Morgan
3333	Jean's Starr	W. Kimbell	Sloop	164	30'7	4	Tanzer
3341	Kristy	T. Leissing	Sloop	258	22	1'8	O'Day
3454	Patience	J. Koster	Sloop		34	4'3	Hunter
3593	Nasz Statek	B. Zambriski	Sloop	264	22	2	Catalina
3655	Eider	V. Afflixio	Sloop		27	3	Catalina
3807	Fantasea	Dr. G. Dennison	Cutter		38	3	Krogen
3814	Jungfrau	Dr. D. Maud	Cutter		38	3	Krogen
3860	Joyden	Dr. D. Maud	Cutter		38	3	Krogen
3865	Sly Fox	F. Gillespie	Yawl	125	50'8	5'9	Hinckley
4201	Soverain	J. Mattera	Sloop		32	3'6	Bristol
4230	Virgo	W. Raskin	Sloop		31	4	Island Packet
4242	Kandy Bar	W. Dwyer	Sloop		35	3'9	Pearson
4271	Chanson	J. Dunnels	Sloop	194	29'11	3'9	Morgan
4382	Yesterday's Dream	W. Fritz	Sloop		27	3'6	Tartan
4406	Nocturne	R. Bachman	Sloop		27	4	Catalina
4430	Serene Irene	L. Kohl	Sloop		28'5	3'3	Irwin
4495	Eramia	W. Kachel	Sloop	186	32	3'5	Irwin
4571	Windswept	B. Caputo	Sloop	258	22		Hunter
4744	Mandalay	J. Saxe	Sloop	196	30	3'6	Wanderer
4760	Baycation	W. Dreher	Sloop		27	4	Catalina
4830	Ericsean	K. Padden	Sloop	198	30		Ericson
5050	Arc-en-Ciel	A. de La Houssaye	Sloop	234	27	3'3	Hunter
5112	Mweedn	W. Flanagan	Sloop		29	4'3	Contest
5174	Manatuck	E. Reardon	Yawl		44	4'6	Mercer
5460	C-Breeze	B. Cohn	Sloop		27	4	Catalina
5861	Dragon Fly	J. Davis	Sloop	210	25	4'3	C&C
6217	Lady Ann	R. Mourino	Sloop	215	27	3'5	Catalina
6305	Escape	A. Meyer	Sloop		27	3'6	Catalina
6500	Pelagic	E. Borella	Sloop		23	3	Alberg/Ryder
6565	Marian II	H. Feldhusen	Sloop		30	4	Hunter
6643	Salthart	J. McCormack	Sloop		27	4	Catalina
6744	Lucky Bark III	T. O'Connell	Sloop	210	25	4	C&C
6789	Joli	J. Morris	Sloop		22	2	O'Day
6996	Sojourn	P. Luloff	Sloop		30	4	Hunter
7017	Orion	R. Ryan	Sloop		27	3'3	Hunter
7700	Absolut	S. Penny	Sloop	168	25'11	5	S-2
7746	Serenity	D. Trella	Sloop	192	30	4	Hunter
7766	April XV	J. Stevens	Sloop		27	3'10	
8987	Phase II	D. Pearsall	Sloop	149	34'5	4'3	Hunter
9272	Phantasm	D. Cashton	Sloop	230	28'2	2'3	Kelt
10096	Mary Beth	L. Moreland	Ketch	192	41	4'2	Morgan O.I.
10207	Tranquilizer	R. Daytz	Sloop	149	38	3'8	Morgan
10987	Drumshanbo	B. Pittman	Cutter	158	35	4'11	Erickson
11111	Sugar & Spice	M. Stott	Sloop		30	4	Newport
11185	Lemy	W. Frank	Sloop		34'8	4'2	C&C
11588	Thunder Cloud	J. Classen	Sloop	196	27	4'6	C&C
11657	Eagle	T. Tyler	Sloop		29'9	3'6	Bristol
11976	Bay Breeze	L. King	Sloop	196	27'4	4'3	C&C
12631	Rehbock	H. Kaplan	Sloop		25	2'3	O'Day

SOUTH BAY CRUISING CLUB FLEET — SAILING AUXILIARIES (Cont'd.)

Sail #	Yacht	Owner	Rig	HCP	LOA	Draft	Model
12790	Clever Scheme	T. Maltman	Sloop		26'6	3'11	C&C
13409	Playpen	D. Voos	Sloop	264	21'6	2	Catalina
14423	Cherry Pi	F. Marinaccio	Sloop	210	25	3'10	C&C
20126	Odin	W. Schmahl	Sloop	146	33	4'5	C&C
20779	Victoria	G. Vieth	Sloop		37	4'2	Tartan
21674	Solitude	W. Warner III	Yawl		35	3'9	Pearson
21919	Windrose	B. Lambart	Sloop		32	3'6	Endeavour
22643	Puffin	R. LeCausi	Sloop	174	25'2	4'2	Kirby
22770	Seamantics	R. McGuire	Sloop		45	5	Jeanneau Su
24191	Quest	R. Van Tassel	Sloop	116	42'9	4'8	Tartan
26164	Spirit	H. Colleran	Sloop		39'11	4'3	Pearson
30156	Ricochet	C. Swenson	Sloop	109	40	4'9	C&C
31950	Outlaw	E. Brooks	Sloop		36		Morgan
33531	Cherie	R. Healy	Sloop		33	4	Hunter
33712	Blue Thunder	C. Pearsall	Sloop	168	25'11	1'1	S-2
33811	Harmony	C. McCrory	Sloop	201	28	3'9	O'Day
33978	Sigrid	J. Pallotta	Sloop	124	37	4'3	Tartan
40601	Menage A Trois	M. Meyerson	Sloop	210	24'6	4'3	Mark 25
40601	Menage A Trois	P. Vandervoort	Sloop	210	24'6	4'3	Mark 25
40865	American Express	D. Spivack	Sloop	138	26	4'8	Impulse
40999	Weed	R. Schwartz	Sloop	135	27	4'11	Tartan
41318	Riley Coyote	J. Reilly	Sloop	135	30	3'7	Santana
42295	Forever In Debt	R. McLaren	Sloop		22'9		O'Day
42370	Silver Bullet	J. Reichel	Sloop	123	27'6	4'11	J-Boat
42655	Current Affair	M. Schairer	Sloop	170	30	3'11	O'Day
42998	Barleycorn	B. Brownyard	Sloop	76	35	6'11	Schock
50682	Lagniappe	T. Jones	Sloop	219	25	4	US Yachts
54062	Jammin	M. Morgan	Sloop		27	3'3	Hunter
71044	Jomar	J. Lilly	Sloop	141	30	4	Hunter
No #	Zigeuner	W. Nafey	Sloop		34	4'4	O'Day



MEMBER YACHTS ALPHABETICALLY

Yacht	Sail #	Owner	Yacht	Sail #	Owner
Absolut	7700	S. Penny	Bravo	1109	O. Osmun
Adorna	1531	W. Husing	Brigadoon	74	R. Stevens
Adria	277	R. Saganic	Brigadoon	144	W. Eilbeck
Adrienne	1153	J. Rothburd	Broadbill	717	M. Warsaw
Adventure	579	M. Zipnick	Brokher	759	A. Eppig
Aeolus	297	R. Graham	Buccaneer	78	A. Pearson
Aeolus	340	B. Smassonow	Busman's Holiday	732	S. Brice
Aeolus III	251	P. Dauzickas			
Aerie	185	J. Grover	C-Breeze	5460	B. Cohn
Aftermath	123	W. Briesmeister	Cachalot	587	J. Meehan
Ailanthus	1121	W. Grauer	Calypso	3016	R. Signorelli
Aisling	379	L. O'Reilly	Camelot	232	A. Provenz
Aleta	444	W. Applegate	Carefree	1855	R. LaTorre
Alone At Last	870	P. Halpin	Carolina	2712	A. Davies
American Express	40865	D. Spivack	Cat's Paw	903	B. Blossom
Amethyst	421	D. Davies	Catharsis	999	L. Christiansen
Andros	202	J. Katsikis	Chaconne	1276	R. Pawloski
Anjin	1185	W. Burke	Challenger	738	W. Schielke
Antares	1133	R. Coleman	Chanson	4271	J. Dunnells
Antigua	73	F. Gauch	Chaitlin	116	E. Simmins
Apocalypse	312	W. Johnston	Charisma	77	Rev. R. Parker
Apollonia IV	256	J. Passeggio	Charlynn	345	C. Parker
April XV	7766	J. Stevens	Cheerio	739	J. McKeen
Arc-en-Ciel	5050	A. de La Houssaye	Cherie	33531	R. Healy
Arctic Tern	469	C. Harris	Cherry Pi	14423	F. Marinaccio
At Last	322	C. Hartzell	Christic	1021	J. Wallace
Aquaries III	107	C. Carlson	Chubby Cheeks	545	B. Terry
Aw-Gust	1759	B. August	Clepsydra	578	M. Van Zaten
			Clever Scheme	12790	T. Maltman
Bagheera	2016	R. Schaper	Climax	1	D. Max
Bahama Star	54	D. Sinsbaugh	Colleen	335	F. Horn
Barba	342	A. Petrovich	Compulsion	589	B. Russo
Barcarolle	203	M. Goldsmith	Conchetta	184	C. Hedde
Barleycorn	42998	B. Brownyard	Constellation	263	J. Bogan
Batyam	352	M. Heller	Coppelia	482	J. Steinert
Bat Yam IV	127	I. Tannenbaum	Counterpoint	1204	J. Becker
Bay Breeze	11976	L. King	Courtesan	1090	J. Young
Baycation	4760	W. Dreher	Cro's Nest	162	G. Bodkin
Becky	354	C. Becker	Crush	103	T. David
Betty	9	W. Menger	Cu Mara	308	L. Schaefer
Bewitcher	139	C. Heckel	Cultured Vulture III	391	P. Patin
Big Joe	95	J. Archer	Curlew	183	D. MacDonell III
Bionator	395	M. Goodman	Curragh	930	T. McClone
Bitter End	537	R. Hoey	Curragh	729	K. O'Hagan
Black Magic II	441	K. Black	Current Affair	42655	M. Schairer
Black Petrel	24	R. Ramsdell	Cygnus	2180	M. Lucivero
Blanche L. III	273	A. Schnapp	Cymoril	42	G. Bottino
Blaze	725	R. LaBella			
Bliss	253	T. Faas	Dauntless	1061	W. Lapp
Blithe Spirit	347	P. Knott	Decatur II	641	A. Lovito
Blue Thunder	33712	C. Pearsall	Decision	772	R. Ryzner
Bon Homme Richard	1149	R. Muhr			
Bonnie Mood	269	L. Dowling			
Bravo	357	H. Spatenga			

MEMBER YACHTS ALPHABETICALLY

Yacht	Sail #	Owner
Decision	1555	T. Faber
Deja Vu	37	P. Revella
Deliana	174	W. Symons
Destiny	2700	J. French
Dharma II	1227	M. O'Connell
Dickens	670	R. Burns
Don Quixote	382	C. Sagarese
Doris Ann	337	R. Schultz
Dotty Ann	701	R. Benedict
Dove II	477	M. Levee
Dragon's Den	1181	R. Vetter
Dragon Fly	5861	J. Davis
Dream Boat	18	I. Wolin
Drumshanbo	10987	B. Pittman
Duet	98	R. Soreil
Dulcinea	666	W. Sprague
Eagle	11657	T. Tyler
Ebb-Tide	112	J. Tarantino
Eddie Lady	33	T. Kettel
Eider	3655	V. Afflixio
Elan	917	P. Aries
Ellen	281	J. McInerney
Emerald Seas	39	F. Cornman
Emily Alice	566	B. Weese
Enchanted	1321	S. Fili
Enchanted	730	B. Sandgren
Encounter II	15	W. McDonald
Eramia	4495	W. Kachel
Ericsean	4830	K. Padden
Escape	6305	A. Meyer
Essence of Pleasure	422	J. Milano
Estelle	87	A. Peters
Exeter	549	Rev. McCarthy
Fairwind	457	R. Schultz
Falcon	242	A. Heckel
Family Ties	1137	R. McGrath
Fantasea	3807	G. Dennison
Fare Thee Well	3118	J. Hessel
Fast and Easy	1279	F. Sagarese
Feather	292	T. Dauch
Felicity	1115	R. Engel
Fiesta	1146	K. Meinking
Fiona	48	E. Forsyth
Firewater II	1457	G. Baldwin
Firewater II	1457	D. Crocker
Firstlight	110	L. Lowy
Flicka	1253	R. Stuhler
Flying Cloud	178	E. Kissenberth
Forever In Debt	42295	R. McLaren
Four C's	1242	W. Christopher
Friendly Persuasion	742	T. Schwarting

Yacht	Sail #	Owner
Genesis II	452	A. Bergenn
Gingersnap II	1425	J. Burnup
'Glas Menagerie	320	B. Kennedy
Gliding Gull	2808	D. Van Nostrand
Gloria	1530	C. O'Malley
Golden Days	2020	M. Silbert
Golden Goose	1860	R. Todd
Good Wind	151	H. Goodwin
Gypsy Rose	420	C. Serra
Gypsy	81	R. Carl
Hallelujah	8	R. Kanser
Happiness Is	243	N. Heckel
Happy Days	163	B. Fuechtmann
Happy Traveler	285	J. Kaufman
Harmony	33811	C. McCrory
Heather	1441	G. Paterson
Hey Ad	883	A. Sternfeld
HMS Bel Ami	136	P. Jimenez
Holder Tight	2041	K. Black
Horizons	371	E. Schecker
Huntress	1157	Dr. P. Pruden
Huntress	1157	N. Pruden
HS Kathleen L	625	J. Layton
Hydrotherapy	2484	M. Kohl
Illusion	419	F. Wiedersum
Incredible	305	J. Larmor
Independence	270	E. Turner
Innisfail	662	G. Sullivan
Integrity	1215	W. John
Intuition	366	R. Hoernel
Irish Clan	344	R. Dean
Jackie M.	226	F. Merklin
Jacqueline II	818	R. Forman
Jammin	54062	M. Morgan
Jean's Starr	3333	W. Kimbell
Jeannie	171	L. Deutsch
Jemaren II	2661	H. Wilburger
Joey V.	401	A. Valenzano
Joli	6789	J. Morris
Jolly Jack	168	J. Hollis
Jomar	71044	J. Lilly
Joyden	3860	D. Maud
Jubilation	100	E. Petroske
Judiann	1127	B. Flett
Jungfrau	3814	D. Maud
Juniper	1128	J. Istel
Kandy Bar	4242	W. Dwyer
Kariana	283	D. Krug

MEMBER YACHTS ALPHABETICALLY

Yacht	Sail #	Owner	Yacht	Sail #	Owner
Karma	413	J. Wiehl	Mirage	536	G. Schneller
Katie E	137	R. Nylund	Mis-Jef	503	L. Natale
Keriann	288	N. Robertson	Mistress	712	J. Jeffers
Kinship II	167	S. Greenfield	Moondance	225	T. Penn
Kittiwake	914	P. Rettaliata	Moonraker	621	B. Martorana
Kittiwake	669	R. Olsen	Morika	140	R. Barth
Kitty K.	96	B. Kleisler	Mouette	901	A. Reinhard
Knee Deep	1225	J. Chapey	Mweedn	5112	W. Flanagan
Kristy Kim	199	M. Hoffman	Mystic	1661	K. Strange
Kristy	3441	T. Leissing	Mystique	88	J. Rettaliata
Lady Ann	6217	R. Mourino	Nancy B	109	L. Leopold
Lady Barbara	1395	B. Nielsen	Nasz Statek	3593	B. Zambriski
Ladybug	760	R. Rosenbusch	Nepenthe	369	R. Kapell
Lady Lynn	99	L. Kondor	Nephele	1770	R. Goodwin
Lagniappe	50682	T. Jones	Nereid	43	J. Tuffin
Lapaix II	433	D. Boyd	Nessie	628	A. Rock
Last Fling	102	T. Hangarter	Never Again II	1012	R. Colombo
Latest Addition	700	G. Keenan	Nevermore II	201	W. Ludlum
Le Cygne Noir	671	D. Gardner	Never Say Never	879	S. Etimos
Lemy	11185	Dr. Frank	New Wave	622	W. Doscher
Lena	430	D. Stephani	Nifty	1681	C. Huberman
Leprechaun	1161	D. Connor	Nimble	215	J. Perry
Les 'Elle	568	L. Runestag	Nirvana	1010	R. McGinty
Liberty	44	R. Starkie	No Phones	390	R. Bernstein
Liesel	447	A. Lake	Nocturne	4406	R. Bachman
Loki	403	D. Gardner	Nola	327	D. Jackson
Loon	2728	L. Orr	Nova	192	R. Canino
Lori II	440	R. Pascucci	Obession	114	G. Schwarting
Lorna Doone	120	R. VanNostrand	Odin	20126	W. Schmahl
Lucky Bark III	6744	T. O'Connell	Orianna	1371	M. Milligi
Luff 'N' Stuff	1312	H. Courten	Orion	7017	R. Ryan
Luff Affair	22	T. Garb	Outlaw	31950	E. Brooks
Magic	200	R. Sheppard	Outlaw	888	A. James
Magic	1000	B. Finkle	Overdue	169	D. LeMaitre
Magic Beans	638	L. Pfister	Oz	573	H. Weinberg
Magic Moments	514	K. Keller	Papillon	1461	D. Hall
Mallard II	165	E. Kennelly	Papillon	166	J. Hallam
Manana	23	F. Holwell	Partenope	586	L. Parillo
Manatuck	5174	E. Reardon	Passing Fancy	150	H. Clemons
Mandalay	4744	J. Saxe	Patience	3454	J. Koster
Mariah	265	D. Reichel	Patience	1699	B. Rottkamp
Marian II	6565	H. Feldhusen	Pato Loco	92	P. Lightstone
Mary Beth	10096	L. Moreland	Patty Wagon	89	D. Wood
Me-N-Thee	1222	R. Rouse Jr.	Pelagic	6500	E. Borella
Memory	68	F. Heese	Periwinkle	31	R. Terceira
Menage A Trois	40601	M. Meyerson	Perry	191	C. Vermaelen
Menage A Trois	40601	P. Vandervoort	Perseverance	1936	R. Merz
MerriMac	11	B. MacGill	Peter Pam	1991	P. Murphy
Merry Ann	220	W. Cook	Phantasm	9272	D. Cashton
Miracle	636	J. Good	Phase II	8987	D. Pearsall

MEMBER YACHTS ALPHABETICALLY

Yacht	Sail #	Owner
Pimingo	1351	J. Drabkin
Playpen	13409	D. Voos
Prim	2221	D. Hilgendorf
Proteus	544	H. Freudenthal
Psyche II	2185	Dr. Cohen
Puffin	22643	R. LeCausi
Purr Box	228	N. Van Name
Pursuant	260	A. Tierney
Pursuit	58	B. Eitapence
Pzaz	254	J. Schlitt
Quadrant	388	H. Langley
Quest	3301	R. Cresci
Quest	24191	R. Van Tassel
Quicksilver	1983	J. Montiel
"R" Pleasure	480	R. Towlen
'R-Tern	155	J. Regan
Raclette	298	R. Hollis
Rakamah	617	S. Scharr
Rapture	1382	B. Ladden
Realization	66	R. Wissmann
Red Baron	219	E. Kaiser
Rehbock	12631	H. Kaplan
Reliance	464	D. Ketcham
Renarde	555	W.M. Aubin
Resistance	176	R. Dunlop
Resolute	161	R. Snyder
Reverie	132	B. Bacci
Rhapsody	460	E. Hettinger
Rhapsody	2202	B. Nierenberg
Ricochet	30156	C. Swenson
Riley Coyote	41315	J. Reilly
Rio	208	C. Bollman
Roundtrip III	418	D. Browne
Runway	1480	S. Hughes
Runaway Too	715	P. Schulz
Saga II	118	R. Rothaug
Salthart	6643	J. McCormack
Salty C's	190	J. Canning
Sanderling	668	R. Nehring
Sanderling	668	T. Nehring
Sara Jane	119	N. Berhannan
Scream'n Re	543	H. Blum
Sea Dream	423	W. Dunleavy
Sea Fox	70	K. Goodwin
Sea Jay	35	J. Wragge
Sea Pearl II	311	J. DeLuca
Sea Roar	328	A. Perlmutter
Sea Sprite	331	A. Wieda
Sea Wind	684	T. Cramer
Sea Witch	122	R. Ernst
Seaduced	804	T. Tormey

Yacht	Sail #	Owner
Seamantics	22770	R. McGuire
Seanachie	2641	J. Leddy
Seascape	25	R. Weiner
Seastar	210	C. Hoyler
Second Edition	146	T. Poulos
Second Wind	170	W. Thomas
Seeker	542	B. Giannott
Serene Irene	4430	L. Kohl
Serenity	7746	D. Trella
Shamrock III	336	G. Ginty
Shamu	853	T. Jewell
Shangri-La	130	J. Sicinski
Shikari	567	S. Ramsden
Shoot'n The		
Breeze	675	R. Czach
Shorebird	450	T. Madigan
Sigrid	33978	J. Pallotta
Silhouette	1260	T. Gotard
Silver Bullet	42370	J. Reichel
Skoal	828	J. McMahan
Skylark	45	W. Thayer
Slim	62	H. Hamstra
Sly Fox	3865	F. Gillespie
Snow Goose	2890	P. Wilker
Snowgoose	59	R. Garben
Sojourn	6996	P. Luloff
Solitude	21674	W. Warner III
Soverain	4201	J. Mattera
Sparrow	6	E. Miller
Spirit	26164	H. Colleran
Spirit	615	W. Titus
Spraymaker II	188	H. Rapps
Squire	71	J. Van Vliet
Stardust	57	J. Ferguson
Stardust	524	M Gargiulo
Stimulus	52	J. Buckman
Sugar & Spice	11111	M. Stott
Summer Whim	687	R. Sanalidro
Summerwind	19	A. Brant
Sunchaser	32	J. Schnell
Sundancer III	501	R. Navickas
Sunriser	346	H. Smith
Sunshine	822	V. Kind
Sunshine	179	E. Wagner
Swallow	2141	B. Fenner
Swan	142	J. Kracht
Sweet Decision	3111	W. Fleischman
Tachyon	776	D. Cameron
Teezim Too	10	F. Zimmerman
Theophilus	245	B. Gallagher

MEMBER YACHTS ALPHABETICALLY

Yacht	Sail #	Owner	Yacht	Sail #	Owner
Thunder Cloud	11588	J. Classen	What Me Worry	93	J. Ryan
Thursday's Child	4	F. Taussig	Whisper	2420	D. Brown
Time Flies	181	M. Gurak	Whisper	443	R. Sherwood
Time To	21	F. White	Whisper	3019	R. Von Rhee
Tizona	631	A. Tonkiss	White Cloud	204	J. Cahill
Tomorrow's			White Squall	934	M. Smith
Dream	231	C. Shyngle	Wild Blue II	360	A. Mulle
Tortuga	234	R. Coroneos	Wild Goose	1101	J. Glynn
Tranquilizer	10207	R. Daytz	Wild Rover	1125	J. Ferguson
True Love?	1518	L. Becker	Wilde Thyme	442	B. Spivack
Tuono	67	P. Ljungqvist	Wind Call	1714	E. Dew
Turning Point	173	M. Lesser	Wind Chimes	26	W. Foyt
Tuxn	14	G. Boulukos	Wind Quest	318	C. Margeson
Twenty Two Fifty	2250	L. Tokar	Wind Seeker	600	G. Wines
Unicorn	1001	L. Casey	Windhover II	541	J. Picciano
Uptick	479	D. Leiman	Windrose	21919	B. Lambart
Utopia	222	D. Zimmer	Windstar	46	L. Novak
Vantsea	1100	V. Seplow	Windswept	4571	B. Caputo
Vera	385	M. Gorin	Wing It	3222	T. McNamee
Vi	125	A. Yaxis	Wink	241	D. Woodhull
Victoria	20779	G. Vieth	Winter's Tale	838	D. Smith
Virgo	4230	W. Raskin	Witch Craft	629	R. Pettit
Voyager	1220	M. Fishman	Xanadu	91	J. Sachnoff
Walkabout	1156	A. Rubin	Yankee Doodle	86	H. Post
Wandelaar	1085	J. Schwartz	Yellowbird	2404	M. Smith
Wanderlust	115	R. Holzmacher	Yesterday's Dream	4382	W. Fritz
Warlock VI	101	S. DeLise	Zephyr	705	A. Feldman
Waverider	223	R. Wright	Zigeuner	No #	W. Nafey
Weed	40999	R. Schwartz	Ziggy Stardust	85	L. Goetz

POWER VESSELS

Vessel Name	Owner	Vessel Name	Owner
Alibi	A. Rising	Joint Venture	H. LeBow
Alice V	G. Veith	Mahalo	R. Peterson
ASDIP	D. Max	Marere	T. Baroni
Dolphin	R. Carl	Missing Link	P. Linker
Dovekie	R. deMurias	Nereus	H. Freudenthal
Evening Star	D. Iurillo	Osprey	H. Holler
Fancyfree	S. Milstein	Patricia Ann	R. Wills
Fang	H. Labanow	Puffin II	G. Wrage
Firewood	R. Sheppard	RANGER	T. Henry
First Light	R. Stuhler	Salty	B. Brownyard
Isdon	A. Klesick	Sea Glass	J. Rettaliata
Island Woman	E. Seidenberg	South Wind	W. Konz

MEMBERS' ZIP CODES

Amityville 11701
Babylon 11702
Baldwin 11510
Bayport 11705
Bay Shore 11706
Bellmore 11710
Bellport 11713
Blue Point 11715
Bohemia 11716
Brentwood 11717
Brightwaters 11718
Brookhaven 11719
Center Moriches 11934
Central Islip 11722
Commack 11725
Copaigue 11726
Coram 11727
Croton 10520
Deer Park 11729
Dix Hills 11746
Douglaston 11363
East Islip 11730
East Meadow 11554
East Patchogue 11772
East Rockaway 11518
Elmont 11003
Edgewater, MD 21037
Encinitas, CA 92024
Englewood, NJ 07631
Farmingdale 11735
Farmingville 11738
Freeport 11520
Ft. Salonga 11788
Garden City 11530
Glen Head 11545
Great River 11739
Green Cove Springs, FL 32043
Gulfport, FL 33737
Hauppauge 11787
Hempstead 11550
Hewlett 11557
Hicksville 11801
Hilton Head Island, SC 29928
Huntington 11743
Island Park 11558
Islip 11751
Islip Terrace 11752
Kilmarnock, VA 22482
Kings Park 11754
Lawrence 11559
Levittown 11756
Lindenhurst 11757
Lousonville, NC
Lynbrook 11563
Massapequa 11758
Massapequa Park 11762
Mastic 11950
Medford 11763
Melville 11747
Merrick 11566
Middle Island 11953
New Bern, NC 28560
New Rochelle 10804
North Babylon 11703
North Hempstead 11552
North Merrick 11566
Northport 11768
Oak Beach 11702
Oakdale 11769
Oceanside 11572
Oriental, NC 28571
Patchogue 11772
Plainview 11803
Point Lookout 11569
Port Washington 11050
Remsenburg 11960
Richmond Hill 11418
Rockville Centre 11570
Roslyn Harbor 11576
St. James 11780
St. James City, FL 33956
Santa Clara, CA 95052
Sayville 11782
Seaford 11783
Selden 11784
Shirley 11967
South Farmingdale 11735
Southold 11971
Stamford, CT 06903
Stuart, FL 33496
Tierra Verde, FL 33715
Uniondale 11553
Valley Stream 11581
Vero Beach, FL 32960
Virginia Beach, VA 23454
Wantagh 11793
West Babylon 11704
Westbury 11590
West Gilgo Beach 11702
West Hempstead 11552
West Islip 11795
West Sayville 11796
Whippany, NJ 07981



This Yearbook is dedicated to the memory of
Ken Kondor, Past Commodore of our Club.

Ken did not rest on his laurels. Until illness overcame him he remained quite active. He was a member of the Board of Governors and Constitutional Committee. Although he was not a member of the Hospitality crew he was on hand for every Blast to help set up. We'll miss you Ken.

We are also saddened to note the passing of two other long time members of the Club:

Macklin Boettger
and
Joseph Valenzano

They will be missed.

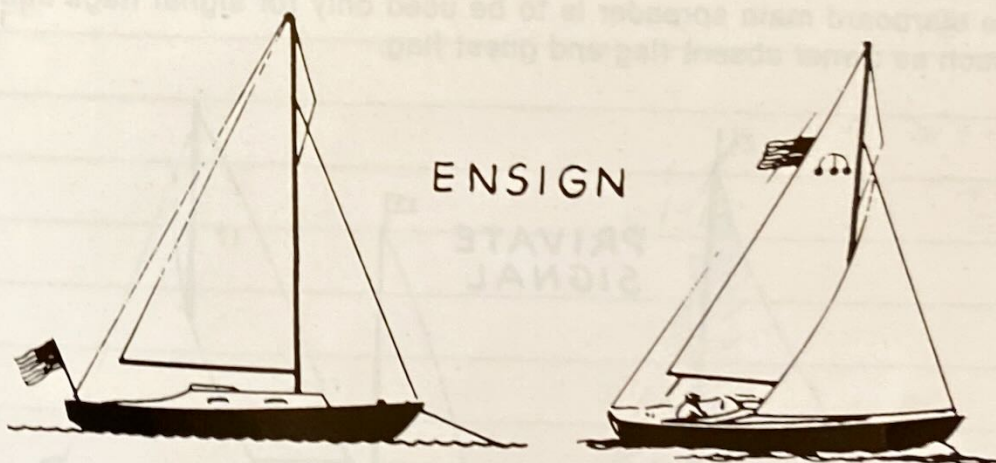
FLAGS AND SHAPES Flag Etiquette

The correct display of flags, signals, and ensigns is one of the more obvious marks of a yachtsman. This code is steeped in the tradition of the sea and promotes uniformity in communication and identification between yachts. The following flag etiquette covers the signals that are used daily on small or medium sized sailing yachts.

THE ENSIGN

The ensign is displayed between morning and evening colors (0800 and sunset) only:

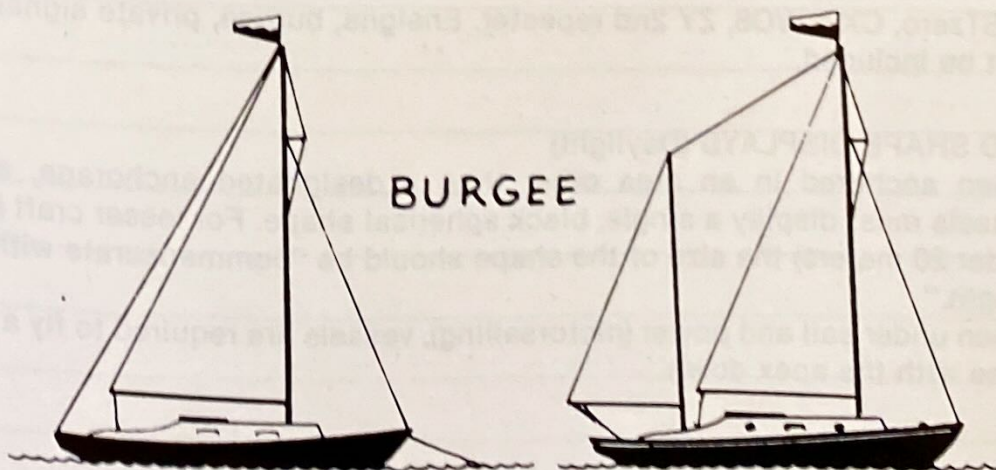
1. At anchor or under power: at the stern staff.
2. Under sail: at the stern staff if not racing and if the boom does not overhang; or at the after-peak of a gaff-rigged sail; or $\frac{2}{3}$ of the way up the leach of a after-most genoa-rigged sail.



THE BURGEE

The club burgee is displayed whenever the ensign is displayed, but may also be displayed separately, between morning and evening colors, or by day and night, while at anchor or under way on:

1. The masthead of single-masted yachts.
2. The forward masthead of 2-masted yachts.



AT ANCHOR OR UNDER WAY

FLAG ETIQUETTE (Cont.)

THE PRIVATE SIGNAL

The owner's private signal may be displayed by day and night on:

1. The masthead of single-masted yachts in place of the burgee.
2. At the after masthead of two masted yachts, at anchor or underway.

FLAG OFFICER' FLAGS

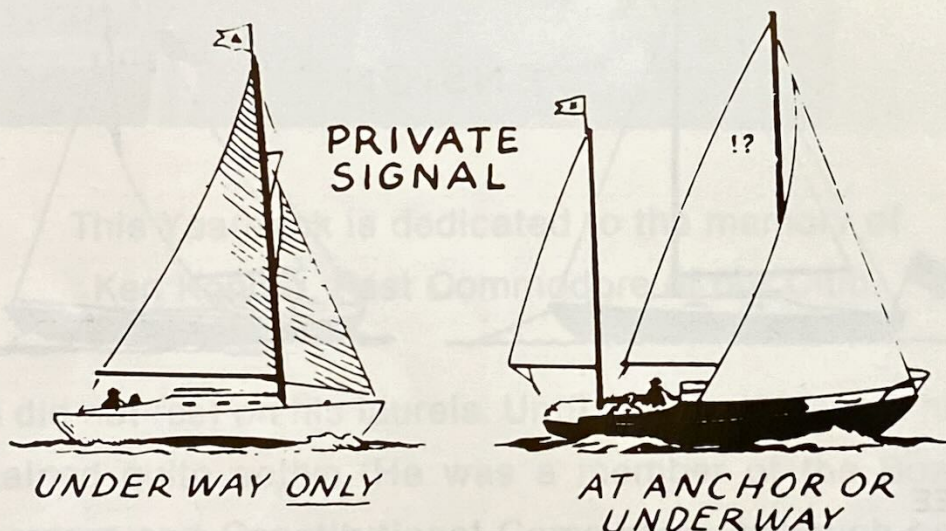
A flag officer shall display his flag both day and night in place of his private signal.

RACE COMMITTEE FLAG

The race committee flag shall be displayed at the main truck, in place of the flag otherwise there displayed, only while acting as the committee boat.

SIGNAL FLAGS

The starboard main spreader is to be used only for signal flags and specific flags, such as owner absent flag and guest flag.



DRESSING SHIP

When dressing ship on commissioning day, Independence Day, and on other special occasions, the following order of international code flags is recommended (starting from forward): AB2, UJ1, KE3, GH6, IV5, FL4, DM7, PO 3rd repeater, RN 1st repeater, STzero, CX9, WO8, ZY 2nd repeater. Ensigns, burgee, private signals etc. should not be included.

REQUIRED SHAPE DISPLAYS (Daylight)

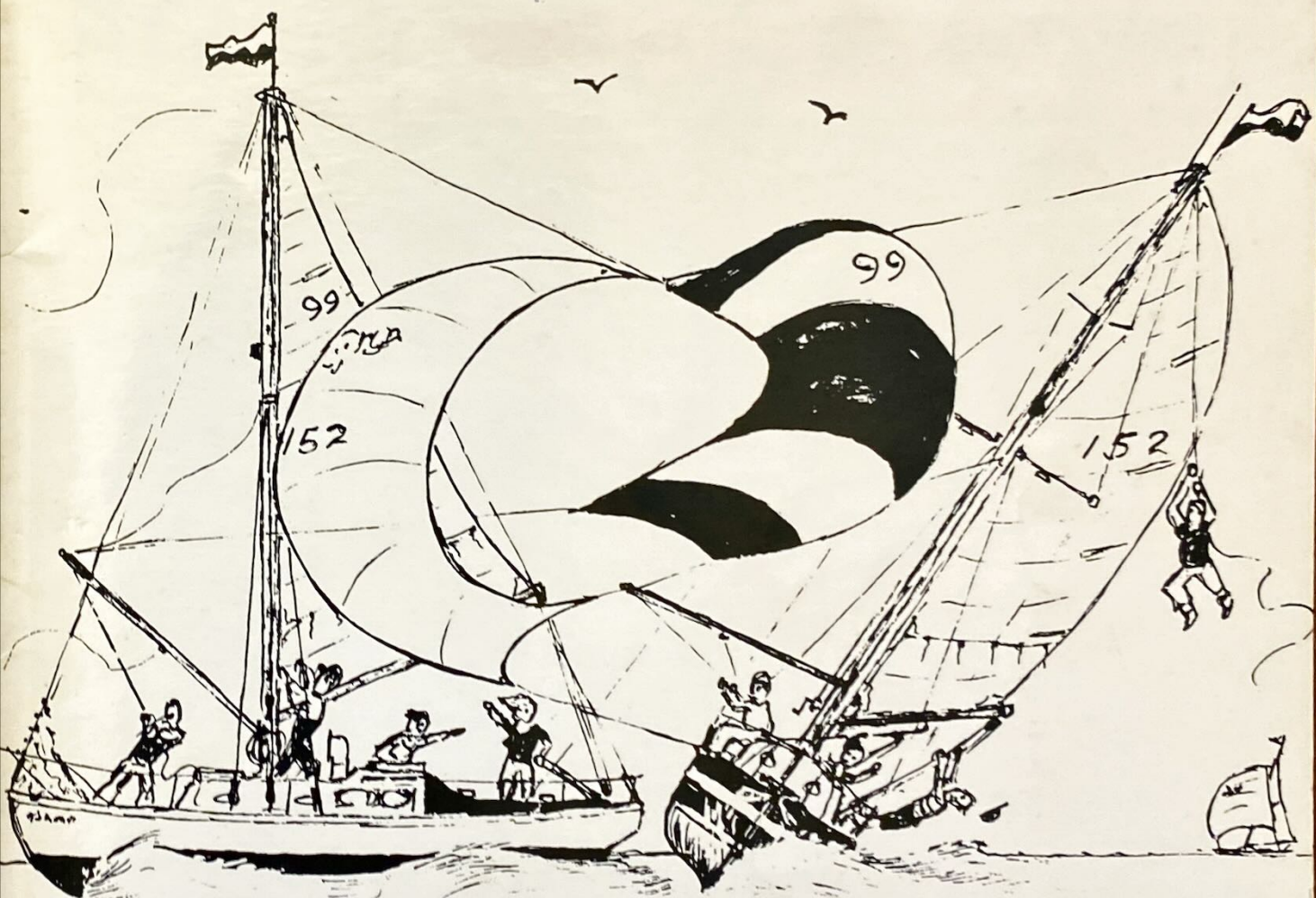
1. When anchored in an area other than a designated anchorage, sailing vessels must display a single, black spherical shape. For lesser craft (those under 20 meters) the size of the shape should be "commensurate with their length."
2. When under sail and power (motorsailing), vessels are required to fly a black cone with the apex down.

LORAN LOG

	T.D.'s/LAT. LONG.	LOCATION/MARK

INTERNATIONAL CODE FLAGS AND PENNANTS

A		L		W		NUMERAL PENNANTS		
B		M		X				
C		N		Y				
D		O		Z				
E		P		REPEATERS				
F		Q			1			
G		R			2			
H		S			3			
I		T		CODE AND ANSWERING PENNANT			4	
J		U			5			
K		V			6			
					7			
					8			
					9			
					0			



R.C.R.

