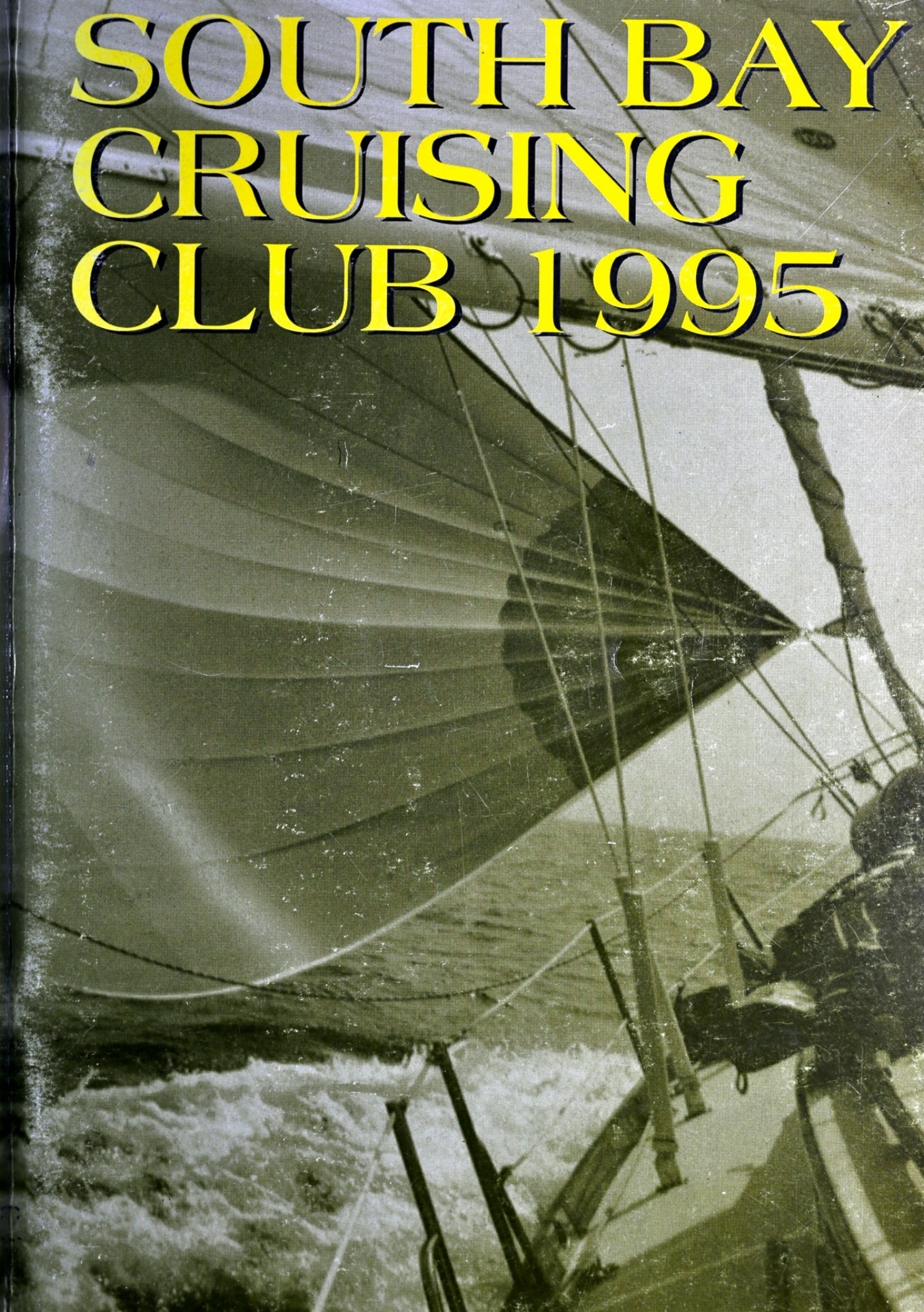


# SOUTH BAY CRUISING CLUB 1995







**Front Cover Photo:** Andy Peters

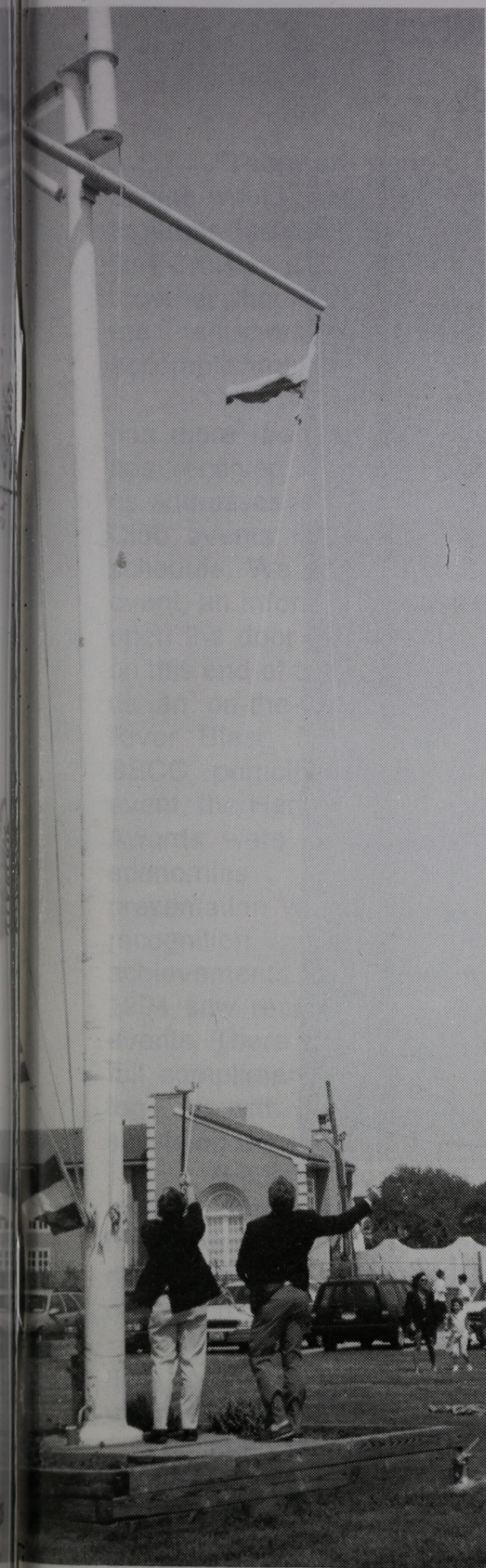
**Photos:** Ted Arnold, Dale & Marilyn Brous, Tim & Phyllis Chambers, Dennis & Barbara Connor, Fred Cornman, Randy & Marilyn Davis, Tom & Joyce Gotard, Joe & Marilyn Hallam, Frank & Joyce Holwell, Mike & Robin Kohl, Larry & Diane Lowy, Dorothy Max, Tom & Ellen Maltman, Dennis & Joyce Maud, Andy & Fran Peters, Ed & Joan Petroske, Tom, Berry & Arielle Poulos, Jim & Felicity Ryan, Ron & Ann Sanalidro, Chris & Linda Schaefer, Ron Schaper, Gary Schwarting, Bob Snyder, Alex & Vi Yaxis

**Pen & Ink Drawings:** Roger Ramsdell

# SOUTH BAY CRUISING CLUB

## TABLE OF CONTENTS

Commodore's Message .....	3
Regatta & Fleet Captain's Messages .....	4
Officers, Board of Governors & Committees .....	5
Past Commodores .....	7
Racing Program .....	11
Qualifying to Race .....	11
Handicaps & Classes .....	12
Racing Rules & Program .....	13
Race Scoring & Trophies .....	15
Committee Boat Assignments .....	17
Starting Line Procedure & Rules .....	17
Time Limit & Protests .....	19
Safety Information .....	20
Race Courses .....	22
Racing Year in Review .....	27
SBCC Perpetual Trophies .....	29
Class Champions .....	30
Social & Racing Schedule .....	CF
Notes to Racing Schedule .....	38
Cruising Notes .....	39
1994 Cruising Awards .....	42
Cruising Year in Review .....	44
SBCC Ships Store .....	52
SBCC Members .....	53
SBCC Fleet by Sail Number .....	61
Members' Yachts Alphabetically.....	68



SOUTH BAY CRUISING CLUB  
P.O. Box 365  
Babylon, New York 11702



JUBILATION

SBCC Flagship

SBCC is a member of the Great South Bay Yacht Racing Association

United States Sailing Association  
P.O. Box 209  
Newport, Rhode Island 02840

Yachting Club of America

SBCC is listed in the Register of American Yacht Clubs. Our members are entitled to reciprocal courtesies at other Yacht Clubs.

# COMMODORE'S MESSAGE

1995

"There are parts of a ship which, taken by themselves, would sink. The engine would sink. The propeller would sink. But when parts of a ship are built together, the float," said Ralph W. Sockman. And such is the story of the South Bay Cruising Club. There has been a cooperative effort of many people, working together shoulder to shoulder to make our "ship" a strong seaworthy vessel. Let me enumerate some of these accomplishments.

The number of new members has more than tripled. This Yearbook has received dramatic changes such as addresses in full with zip codes and Club events listed on one combined schedule. We had a special East End event, an Informal Regatta designed to open the door for more Club activities on this end of the Bay. Hospitality gave us an on-the-waterside, family Great River Blast. For the first time, the SBCC participated in a community event, the Harbor Festival. Our Trophy Awards were streamlined to provide economies and more efficient presentation without sacrificing proper recognition for our Members' achievements. Our new "Masthead" is a model of clear, modern communication. 1994 saw real progress in carrying out our pledge to emphasize on-the-boat events. There were expanded Family Rendezvous, a broad range of Cruises, a full compliment of Races and earnest attempts to bring more Club members together with hospitality for all. Our 1994 voyage has been an exciting and satisfying trip and I am proud to have been at the helm.



But how about 1995? Keeping in touch with members will continue to be a high priority item for me. I believe that our open Board Meetings and our Networking Hotline have helped. But perhaps we should talk. Let me say this - I resolve to be a table-hopping, boat-boarding pest and talk to every member I can reach. And remember, it is always open house aboard "Jubilation".

In addition, the Board of Governors and I vow to do our best to satisfy all and to have worthwhile programs that will enhance enjoyment of life on the water for everyone.

In closing, welcome to all of our new Members and I am looking forward to another rewarding year as Commodore.

*Ed Petroske, Commodore*

## FLEET CAPTAIN'S MESSAGE CRUISING 1995

Sailing is a sport, one in which the participants experience fun, pleasure, and excitement in a direct proportion to their level of interest and participation.

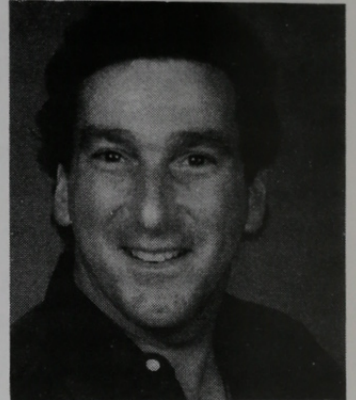
This past season (1994) there were 30 SBCC-sponsored rendezvous with 97 club boats attending one or more of these fun times. During this same season, 37 boats experienced one or more of the three sanctioned cruises. To me, these numbers are impressive and it is my goal to increase the amount of available rendezvous and cruises as well as club boats partaking of these events in the upcoming 1995 season.

However, none of our club's planned events, whether cruising, social, or racing, can be a success without the involvement of our members! This club was organized to help serve the needs of boaters on the Great South Bay/ It is with the efforts of the energetic volunteers who give of their time that these needs are served and our boating experiences enhanced.

I urge each and every member to become an active participant and attend the planned activities. Don't be passive; get more active and help me to make these functions a success.

Once again, here's wishing you a healthy, safe boating season with fair winds and good tides. See you on the Bay.

**Ron Sanalidro**  
*Fleet Captain*



## REGATTA CAPTAIN'S MESSAGE RACING 1995

We have a full schedule of races for the '95 season. Sailboat RACING is a great way to get away for a few hours and have a good time. As it was last year, this year's



SBCC racing schedule was planned around the GSBYRA events. That means that YOU can race every weekend from mid-May through mid-October and sail midweek Twilight races from the end of May through September. If you have not already noticed, Twilight races are my favorite.

There will be a different kind of Race Week this year beginning with a TGIF Race on Friday, August 4, with a starting time of 0400 hours. There will be two Invitational PHRF races on Saturday and one on Sunday with a get-together on the lawn of the Snapper Inn after each day's events. The Bay Distance Race has been replaced with an Ocean Race this year. The

format is slightly modified from what has been done in the past. There will also be one more Twilight Series than there was last year. It's no great secret that Sailing is a great way to spend some time, so I hope to see you all out on the Bay.

See you on the starting line.

**Frank Marinaccio**  
*Regatta Captain*

# **SOUTH BAY CRUISING CLUB**

An organization formed in 1951 to promote cruising under sail on Great South Bay and nearby waters.

## **OFFICERS**

*Commodore*, Edward Petroske --- 878-6126  
*Vice Commodore*, Barry Pittman --- 666-3032  
*Rear Commodore*, Dick LaBella --- 277-4826  
*Fleet Captain*, Ron Sanalidro ---589-2968  
*Regatta Captain*, Frank Marinaccio --- 231-6457  
*Treasurer*, Robin Kohl --- 795-7725  
*"Masthead"* --- Rich Kohler --- 246-5470  
*Recording Secretary*, Bill Dunleavy --- 567-0594  
*Fleet Surgeon*, Dr. Jay Schwartz --- 277-7070  
*Chanteyperson*, Dr. Marion Schwartz --- 277-7070

## **BOARD OF GOVERNORS**

Dick Daytz --- 669-6993	Charlie Parker --- 968-8632
Tom Gotard --- 541-2805	Bob Sheppard --- 472-0099
Michael Kohl --- 795-7725	Don Zimmer --- 785-5246
Bill Menger --- 587-4930	

## **COMMITTEES**

## **CHAired BY**

**Cruising**.....**Ron Sanalidro --- 589-2968**  
Charles & Patti Avalos, Joel & Dorothy Becker, Richie Czach, Dick Daytz  
Joe & Annmarie Dudek, Jim & Donna Ferguson, Bill & Beverly Kimbell  
Mike & Robin Kohl, Rich Kohler, Rich & Ginny LaTorre, Larry & Diane Lowy  
Joe McCormack, Jack & Barbara Nielsen, Frank & Barbara Peter  
Ed & Joan Petroske, Barry & Michelle Pittman, Tom & Berry Poulos  
Jim & Lise Reichel, Ann Sanalidro, Jim & Diane Schlitt  
Jay & Mation Schwartz, Ed & Kathleen Simmons

**East/West Liason**.....**Lou Natale --- 862-7511**  
Steve Etimos, Tony Jones, Bill Ludlum, Tom Maltman, Bruce Terry

**GSBYRA Representative**.....**Gorton Baldin III --- 665-6575**

**Handicap**.....**Lee Christiansen --- 277-6311**  
Dick LaBella, Thom Penn, Jim Ryan

**Historian**.....**Gene Reardon --- 968-5082**

- Hospitality**.....**Bob & Daisy Garben --- 765-5711**  
**Alex & Vi Yaxis --- 264-2153**  
Charles & Barbara Becker, Richard Czach, Lou & Margaret D'Aquila  
Randy & Marilyn Davis, Bill & Sally Eilbeck, George & Ginger Greenblatt  
Joe & Marilyn Hallam, Bill & Beverly Kimbell, Jill Kohler  
Jack & Barbara Levitsky, Tom & Ellen Maltman, Joe & Dorothy McCormack  
Bill & Beryl Menger, Gaspare & Laurie Messina, Jack & Barbara Nielsen  
Ray & Jo Rothaug, Jim & Diane Schlitt, Ed & Carol Sowden  
Tom & Joyce Tyler, Roy & Peggy Van Nostrand, Don & Laurette Zimmer
- "Masthead"**.....**Rich Kohler --- 246-5470**  
Richie Czach, Eric Forsyth, Mike & Robin Kohl, Jack & Barbara Nielsen  
Roger Ramsdell
- Membership**.....**Bob Olsen --- 669-8371**
- Networking**.....**Russ Columbo --- 666-5384**
- Program**.....**Larry Lowy --- 732-6641**  
Joel & Dorothy Becker
- Protest**.....**Thom Penn --- 277-5890**  
Brendan Brownyard, Doug Crocker, Bill Grauer, Dick LaBella  
Tom O'Connell, Jim Ryan, John Saxe, Greg Schneller
- Public Relations**.....**Andy Peters --- 766-6766**
- Race Scoring**.....**Ted Drossos --- 277-2038**  
Larry Becker, Jim Reichel, Rich Rose, Gary Schwarting
- Regatta**.....**Frank Marinaccio --- 231-6457**  
Lee Christiansen, Lee Costelloe, Joe Dudek, Aileen Eppig  
Alan James, Tony Jones, Dick LaBella, Kevin Padden  
Thom Penn, Barry Pittman, Greg Schneller, Jim Reichel  
Paul Rendich, Jim Ryan, Bill Wheeler
- Storekeeper**.....**Barbara Peter --- 589-3466**
- Trophy**.....**Tony Jones --- 563-9371**  
Bill Grauer, Dick LaBella, Ron & Ann Sanalistro
- Yearbook**.....**Berry Poulos --- 661-4143**  
Tony Jones, Frank Marinaccio, Bob Olsen, Ed & Joan Petroske  
Ariëlle Poulos, Tom Poulos, Roger Ramsdell

## HONORARY LIFE MEMBERS (PAST COMMODORES)

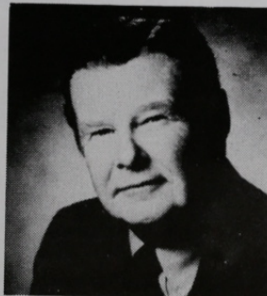
The SBCC grants honorary life membership to all Past Commodores, in recognition of their devotion and duty to the Club. Each of them has contributed time, talent and friendship to help make the South Bay Cruising Club the success it is today.



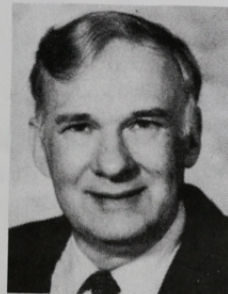
**BILL DWYER**  
1980 - 1981



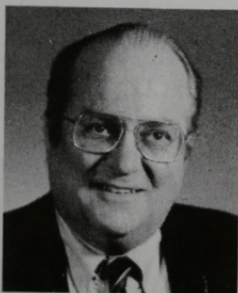
**KEN KONDOR\***  
1982-1983



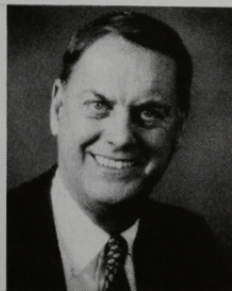
**EARL MURRAY**  
1984-1985



**ANDY DAVIES**  
1986-1987



**DON ZIMMER**  
1988-1989



**BOB SHEPPARD**  
1990-1991

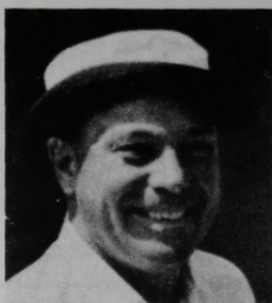


**MIKE SMITH**  
1992-1993

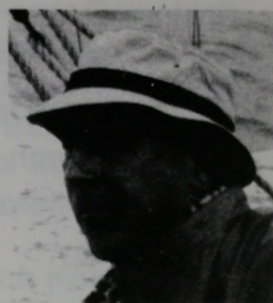
**HONORARY LIFE MEMBERS  
(PAST COMMODORES)**



**WILLIAM CARL**  
1951



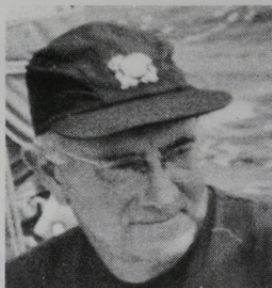
**JAMES A. SWAN, JR.\***  
1952-1953



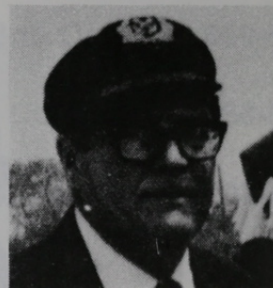
**JOHN F. YOUNG**  
1954-1955



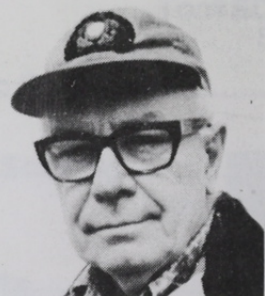
**HENRY A.V. POST**  
1956-1957



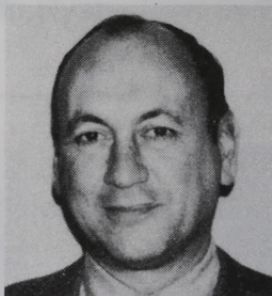
**MERRITT L. SMITH\***  
1958-1959



**ROBERT L. PATERSON\***  
1960-1961



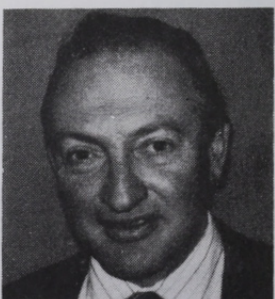
**JOHN D. BEINERT\***  
1962-1963



**EVERETT SEIDENBERG**  
1964-1965



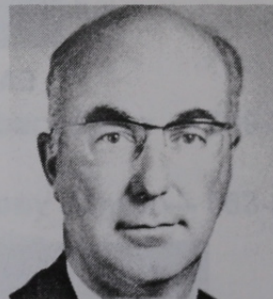
**ROGER G. RAMSDELL**  
1966-1967



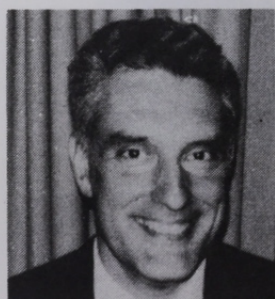
**ALEX PEARSON**  
1968-1969



**FRED C. EGGERSTEDT, JR.**  
1970-1971



**WILLIAM F. BRADT\***  
1972-1973



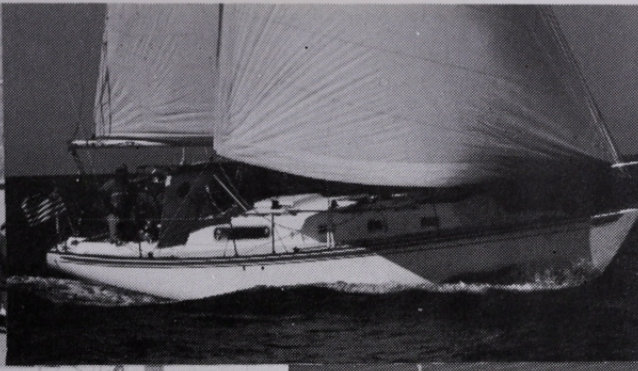
**M. WHITING THAYER**  
1974-1975



**BUD ROSENBERG**  
1976-1977



**RICHARD C. NEHRING**  
1978-1979





# SBCC RACING PROGRAM AND INSTRUCTIONS

## I. QUALIFYING TO RACE

All properly equipped sailboats owned or chartered by SBCC members in good standing are eligible and encouraged to participate in Club races provided they have requested and received a SBCC handicap and otherwise comply with the standards set forth below.

### A. INTENT OF PROGRAM

It is the intent of the SBCC that all sailboats racing in club sponsored events shall contain cruising accommodations with an enclosed cabin. It is recognized that these accommodations will vary according to the type and size of the boat. However, all sailboats are assumed to comply with the manufacturers' standard hull and accommodation plans. It is the responsibility of the owner of any vessel which has been modified or is of unique design to inform the handicap committee of the irregularity prior to racing. Such vessel will then be reviewed by the handicap committee and rated accordingly.

The SBCC handicap system assumes that a sailboat is equipped to race. It does not attempt to rate a partially equipped boat or a boat which differs from others in its class, in that it is unusually light or heavy, out of balance or has unusual windage (as from a dinghy on davits.)

### B. EQUIPMENT

As a minimum all cruising sailboats participating in a SBCC sanctioned club race must have the following equipment on board and in operable condition:

a. All equipment required for the participating vessel to comply with Federal, State and Local requirements.

b. The following additional items:

1. Bunks, securely installed.
2. Toilet, securely installed or fitted bucket.
3. Galley facilities.
4. At least 2 gallons of potable water.
5. Current copy of an approved SBCC handicap rating form.
6. All spars, including spinnaker and whisker poles marked in accordance with the rating form.
7. Headsails of 130% LP or greater shall be measured and marked.
8. An engine or auxiliary motor with enough fuel to return to its home port from any place on the race course.
9. Lifelines per Offshore Racing Council (ORC) Special Regulations paragraph 6.61 thru 6.62 as published by USSA dated 1994.
10. First aid kit and manual.
11. A VHF radio.

c. It is strongly recommended that all sailboats participating in a SBCC sanctioned race on the Great South Bay comply with USSA category 4 equipment requirements.

d. Ocean Races and Races after sunset:

1. It is strongly recommended that additional safety equipment for these races include USSA category 3 equipment requirements and should be equipped with the following additional equipment:
  - a. At least two water resistant flashlights
  - b. A compass
  - c. man overboard pole with strobe light
2. One safety harness **is required** for each crew for the Ocean and Foulke Trophy races.

### C. INSPECTION POLICY AND PROCEDURES

As a condition precedent to racing in a SBCC-sponsored or sanctioned event, all vessels are subject to inspection for compliance with the stated equipment requirements.

The SBCC measurer designated by the Regatta Captain may conduct random inspections of all SBCC sailboats with current SBCC handicaps. These inspections will be conducted with courtesy and as efficiently as possible with permission of the owner or their representative.

If, in the opinion of the measurer or designated assistant, the inspected sailboat does not have on board either the required equipment or comply with the intent of the SBCC race program, the measurer will file a formal protest with the Protest Committee. Boats found not to be in compliance by the Protest Committee will be subject to disqualification.

### D. HANDICAPS

The SBCC fleet includes many different types of sailboats. In order to make race participation attractive to as many members as possible, SBCC Handicap racing is offered. Under this system, every yacht in the fleet, upon request to the Handicap Chairman, is given a SBCC Rating based on it's maximum speed potential.

The SBCC Handicap System rates each yacht according to its maximum speed potential thereby encouraging each skipper to get the best performance from his yacht.

Maximum speed potential is established for each yacht through:

\*statistical analysis of race data for consistently well-sailed boats of similar design.

\*comparison with data from other racing fleets

\*speed-trending data from past performances

Under the SBCC Handicap System, all yachts of different design will have distinctive maximum speed characteristics from which individual handicaps are derived. Fine tuning factors are applied to yachts of the same design to account for differences in rig, prop type, sail compliment, etc.

Each racing skipper is obliged to contact the Handicap Chairman in advance of his first race under the following conditions:

\*a particular yacht is to be raced in the SBCC fleet for the first time

\*the skipper has raced another yacht bearing the same sail number during the season

\*the sail compliment has been changed

\*the basic design of the yacht is modified in any way which could affect its speed potential.

## **E. HANDICAP APPEAL**

A skipper who believes his yacht's handicap might deserve correction may request a handicap review by submitting a written request to the Handicap Committee stating the reasons he believes a review is in order.

## **F. SBCC HANDICAP CLASSES**

Three classes --- Spinnaker, Non-Spinnaker, and Cruising --- are scored under the SBCC Handicap System.

\*Skippers electing to race in the Spinnaker class may use their full sail compliment, and any sail combination consistent with USSA racing rules or special race instructions.

\*It is the intent of the Non-Spinnaker class to restrict sail inventory use to only those sails that can be correctly flown on all points of sail. In the Non-Spinnaker class, only one headsail (either a jib or genoa of a minimum of 3 ounce cloth) may be flown in the foretriangle at any one time. Yachts handicapped as having permanent double head rigs will be permitted to fly their staysail when racing Non-Spinnaker.

\*The Cruising Class, a modified Non-Spinnaker class, will be restricted by the rules of Non-Spinnaker and be open to the skippers who believe their boats are in the "cruising state".

\*Members may change classes as often as they desire, as long as it is done before the first warning signal.

## **G. RACING NUMBERS**

Racing numbers, either USSA or SBCC, are required on mainsails, spinnakers and overlapping (LP greater than 130% J) headsails, in accordance with current USSA rules.

## **H. MEMBERSHIP RESTRICTION**

No boat shall race in a SBCC-sponsored event unless commanded by a SBCC member or associate member. Invitationals sponsored by other organizations are exempt.

## **II. RACING RULES**

Racing rules of the United States Sailing Association (USSA) shall be observed except as otherwise specified in these instructions. Burgees and other flags may be flown when racing. Government navigation buoys not stated as being marks of the course may be disregarded at the discretion of the skipper.

The Inland Rules will replace Part IV of the Racing Rules between the hours of sunset and sunrise. All required lights must be shown.

The 720 Degree Turns Alternative Penalty, Appendix B1 of the USSA racing rules, shall apply to all SBCC races.

## **III. RACING PROGRAM**

### **A. RACE SCHEDULE**

SBCC sponsors numerous races and participates in various invitationals as set forth in the 1995 RACE SCHEDULE.

## B. COURSES

Courses used for SBCC races and some invitationals are set forth on the pages following these instructions. They are grouped by starting areas as follows:

Babylon  
Bay Shore

Nicoll Bay  
Ocean

Watch Hill

For each of these areas, a variety of courses is described below, each bearing a distinguished letter. The choice of course available to the Race Committee on any given day is shown in the Race Schedule. The Course selected will be signalled from the Committee Boat by the appropriate letter code flag. (letters A through I may be used).

Any course can be reversed by Code Flag "R" or shortened by Code Flag "S" as described in Part VI B.

## C. SERIES RACES

### **Babylon Yacht Club July Invitational Series**

This is a two-race series with no throw-out. The courses, starting sequence, and other race instructions will be provided by the Babylon Yacht Club and handed out by the committee boat on station prior to the first race.

### **GSBYRA Race Week**

This is a four-race series and a race fee is required.

### **Sayville Yacht Club Invitational Series (Jack's Trophy)**

This is a two-race series sailed over two days.

### **SBCC Class Championship Series**

This is an over-all season series based on the scoring of selected races. See Part IV B.

### **Tune-Up Series**

This is a two-race series with no throw-outs. To emphasize tuning, no trophies will be awarded.

### **Western & Babylon Twilight Series**

These are a three-race series. They will be scored on the basis of a yacht's best two races, except committee boat as noted in Part IV D. These series will alternate between regular start and non-spinnaker. The final Wrap-Up series will be non-spinnaker.

## D. SPECIAL RACES

**BYC/SBCC Challenge** : Babylon Yacht Club has challenged the SBCC. Each club will participate with an equal number of boats. This is a VOLUNTEERS ONLY race. We will use a lottery system from the volunteers to determine the participants from our club.

**Ladies' Race** : A Non-Spinnaker race. Skipper must be a woman. The Patricia A. Kelly Trophy will be awarded to the yacht with best corrected time with an all female crew.

**SBCC Ocean Race** : This is a separate day race of approximately 25 miles sailed from Fire Island Inlet.

**Single-Handed Creepstakes** : Only skipper is allowed on board during the race. Two classes: 28 feet LOA and over and under 28 feet LOA. Non-Spinnaker only.

**West Island Race** : Nicoll Bay course H may be sailed in either direction. Expanded start.

**Watch Hill Family Race** : a Non-Spinnaker race leaving Watch Hill Sunday morning. Crews must sleep aboard their yacht Saturday night at Watch Hill.

## **IV. RACE SCORING AND TROPHIES**

### **A. SCORING METHOD**

SBCC races will be scored using the Time on Distance Method. A yacht's time allowance is calculated by multiplying her SBCC handicap by the race course distance. The time allowance is then subtracted from the yacht's elapsed time, yielding corrected time. The yacht with the lowest corrected time is the winner. \*

Race results are available to each participating skipper shortly after each race and official results are printed periodically in the "Masthead".

### **B. CLASS CHAMPIONSHIP SERIES SCORING**

Class Championships and trophies will be awarded annually for Spinnaker, Non-Spinnaker, and Cruising Class to the yachts with the best scores, as determined below, in

each class. Scoring will be based on the best 6 of 9 races designated with note 7 in the Race Schedule. Only yachts finishing at least five of these races will be eligible for trophies. Points for these races are computed on the following basis:

1st place yacht receives points equal to the number of starters in the race plus 1/4 point.

2nd place yacht receives 1-1/4 points less than the 1st place yacht

3rd place yacht receives 2-1/4 points less than the 1st place yacht, etc.

A yacht that serves as committee boat for one race of any series will receive credit toward series qualifications for that race and points equal to its average percentage points of its other races.

In the event of a tie in the total number of points scored for the championships series at the end of the season, the boats involved in that tie will have a sail-off to decide class champion. The time, location, and date of this sail-off will be decided by the Regatta Captain, and all skippers will be notified.

### **C. OTHER SERIES SCORING**

Points for each race will be awarded on the basis of 3/4- point for first, 2 points for second, 3 points for third, etc. DNF and WDR boats will receive 1 point more than the number of boats in that class that started in the series. DNS and DSQ boats will receive 2 points more than the number of boats in that class that started the series.

A starter in any one race of the series will be considered to have started in all the races of the series. Series position will be determined by the total points accumulated by each yacht, in inverse order. When there is a tie on points between two or more yachts, the tie shall be broken in favor of the yacht or yachts with the most first places, and when the tie remains, the most second places and so on, if necessary, for such

races as count for total points. If a tie still remains, it will be broken in favor of the boat which beat the other the last time they raced against each other, throwouts included.

#### D. SERIES SCORING FOR COMMITTEE BOATS

A yacht that serves as committee boat for one race of any series will receive credit towards series qualification for that race and points equal to the average of its finish positions in the other races of the series, DNS and DNF races included. This does not apply to the Class Championships.

#### E. RACE TROPHIES

Trophies for individual SBCC races (when not part of a series) will be awarded to each class, according to the following schedule:

Number of Starters	Trophies for
2 or 3	1st
4 through 6	1st and 2nd
7 through 14	1st, 2nd, and 3rd
15 or more	1st, 2nd, 3rd, and 4th

In SBCC series, the greatest number of starters in any race will govern the number of trophies awarded for that series. Only first place trophies will be awarded for the Class Championship Series.

#### F. PERPETUAL TROPHIES

Perpetual trophies are awarded for one year only. They are awarded to the yacht with the best corrected time based on the SBCC Handicap rule.

Each year the club awards seven perpetual trophies as follows:

*Cary Pearsall Trophy* - best corrected time in the Great River Cup race

*Commodore's Cup* - best corrected time in the Commodore's Cup race

*Cruising Club Crock* - best corrected time in the Around Long Island Regatta scored with SBCC Handicaps.

*Deale Trophy* - best corrected time in the West Island race.

*Foulke Trophy* - best corrected time in the Foulke Trophy (night) race

*Governor's Cup* - best total score for the Commodore's Cup, West Island, and Foulke trophy races. High Point Scoring System.

*Patricia A. Kelly Trophy* - best corrected time in the Ladies' Race by a yacht with an all-female crew.

*Smith Trophy* - best corrected time in the Smith Trophy race.

Keeper cups are given to winners of these trophies and their names are engraved on the perpetual trophy. It is the responsibility of the winner of the perpetual trophy to return it by November 1 to the Trophy Chairman for engraving of the following year's winner.

## V. COMMITTEE BOAT ASSIGNMENTS

### A. SERVING AS COMMITTEE

The SBCC depends upon the cooperation of all members. Being the Committee Boat for a race is an important responsibility. It is a job not to be taken lightly for it is the heart of a successful racing program. Reliable, timely, and accurate performance is essential.

Race Chairmen are assigned by the Regatta Committee and listed in the Race Schedule. These assignments are obligatory.

### B. CHANGES

A Race Chairman may switch assignments with another Race Chairman providing that the Regatta Chairman is notified at least 24 hours before the race. Arranging such changes is the sole responsibility of the assigned skipper and does not relieve him or her of responsibility.

### C. PENALTIES

Any Race Chairman who willfully fails to do his or her assignment shall not be scored in any SBCC race for a period of one year from the date of his or her scheduled committee boat assignment. As an alternative penalty, a Race Chairman who failed to do his or her race assignment for the first time in the racing season will be scored in SBCC races after payment of a \$100.00 fine which shall go to the SBCC General Fund.

## VI. STARTING LINE PROCEDURES AND RULES

### A. CLASS STREAMERS

Racing yachts are required to fly streamers from their standing backstays or the leach of their mainsail. Streamers should measure 4"x18".

Creepstakes		Ladies Race	
Class	Color	Class	Color
LOA 28 ft & over	Blue	Mixed Crew	Blue
LOA under 28 ft	Yellow	All Female	Yellow

All Other Races	
Class	Color
Spinnaker	Blue
No-Spin	Yellow
Cruising	White

Failure to display the appropriate streamer may be considered grounds for disqualification.

There is no race of a given class unless two or more qualified yachts start.

### B. CODE SIGNALS

Code flags A through I are used to designate courses (see course instructions). Code flags below apply to all SBCC-conducted races:

L - come within hailing distance for instructions.

M - ROUND or pass the object displaying this signal instead of the mark it replaces.

N - ABANDONMENT, race called off (accompanied by three guns).

R - Sail the designated course the REVERSE direction. Leave all marks to the opposite hand.

S - sail the SHORT course prescribed in the course instructions. When flown after the start (accompanied by two guns), finish between the committee boat and the nearby mark of the course.

T - sail the designated course TWICE around. The "X" mark is a mark of the course the second time around and is left on the same side as the next mark of the course.

**Answering Pennant** - POSTPONEMENT signal (accompanied by two guns). Starts postponed 15 minutes. Warning signal will be made 1 minute after Answering Pennant is lowered.

**1st Repeater** - GENERAL RECALL signal

### C. STARTING

Signals will be made at 5 minute intervals with each signal lowered 1 minute before the hoisting of the next. The visual signal governs; the gun merely calls attention to it. A red signal may be visible until 1 minute before the warning signal.

### D. STARTING SEQUENCE

Abbreviations:

warn - warning signal

prep - preparatory signal

S/ - start signal

Sp - Spinnaker Class

NS - Non-spin class

CRU - Cruising Class

Time	Shape	Regular	No-Spin	Expanded
:00	White	Warn	Warn	Warn
:05	Blue	Prep	Prep	Prep
:10	Red	S/Sp	S/NS	S/Sp
:15	White	Prep		Prep
:20	Blue	S/NS		S/NS
:25	Red			Prep
:30	White			S/CRU

Time	Shape	Creepstakes	Ladies
:00	White	Warn	Warn
:05	Blue	Prep	Prep
:10	Red	S/28+LOA	S/Mixed
:15	White	Prep	Prep
:20	Blue	S/Under 28 LOA	S/All-Female

When, after a starting signal, all the yachts of the class or classes involved have properly started, the Race Committee will, if practicable, announce "all clear".

## **E. ANTI-BARGING MARK**

The committee boat may use an "anti-barging mark". If this mark is used, racers shall not pass through the line formed by the anti-barging mark and the committee boat at any time --- even while "starting". The penalty for infringing on this restricted line (at any time) or for touching (while starting) the anti-barging mark, is disqualification. The anti-barging mark does not change the starting line. The starting line is determined by the "X" mark (or buoy) and the white line marker on the committee boat.

## **F. STARTING LINE ETIQUETTE**

Racing skippers are reminded to stay clear of the starting line until the Preparatory Signal for their class. Classes not starting are to remain clear of all yachts in the division before them. Failure to do so may result in disqualification.

The Preparatory Signal for each class is given 5 minutes prior to the starting signal. Yachts starting with the wrong class may be disqualified.

Skippers electing to change class after arriving in the starting area (but before the warning signal) must notify the race committee of that change.

## **G. RECALLS**

The Race Committee will attempt to sound one blast of a horn or whistle and announce the sail number of each yacht starting prematurely. Nearby yachts are requested to pass the hail. The onus of making a fair start lies on each yacht, and failure to hear or heed a recall will not prevent the premature starter from being penalized. Responsibility for determining compliance with the rules rests with the Race Committee. Yachts making an improper start will be penalized by having one-half hour added to their elapsed time, whether or not they have been notified.

**General Recall:** if there should be a number of unidentified premature starters or if an error is made in the starting procedure such as significant inaccuracy in the interval between signals, the Race Committee will make the General Recall signal. The General Recall signal is the First Repeater code flag accompanied by 2 guns. The starting sequence begins with the recalled classes Preparatory signal.

## **H. VHF COMMUNICATIONS**

VHF radio communications may be maintained during a race utilizing Channel 72 for communication. Radio communications may be utilized to relay information on unusual situations during races such as postponements, recalls, withdrawals, etc. However, Race Committees are not required to use radio. Racers should not communicate with the Race Committee from the time of the Warning gun to the time of the last class start.

## **VII. TIME LIMIT**

Regardless of the time of start, the time limit for a boat in the first class to finish will expire at 1800 except as stated in the notes to the Racing Schedule.

Time limit for all classes starting after the first class will be extended so as to allow all classes to have the same amount of racing time. If any yacht finishes within the time limit for her class, it is a race for her class. Yachts finishing after the committee boat has left its station should take their time and report it to the Race Committee as soon as possible.

## VIII. PROTESTS

The SBCC Protest Committee operates under the Racing Rules of the USSA, supplemented by published decisions of the USSA Appeals Committee. In addition, it shall hear all protests arising from violation of the Inland Rules which replace Part IV of the USSA rules between sunset and sunrise.

The Protest Committee will only entertain protests made in conformity to the USSA rules including:

- \*display of protest flag
- \*notification of protested yacht
- \*notification of Race Committee
- \*submission of written protest within 72 hours
- \*citation of rule or rules allegedly infringed

Protest must be addressed to the Chairman of the Protest Committee and hand-delivered or postmarked within 72 hours of the conclusion of the race in question.

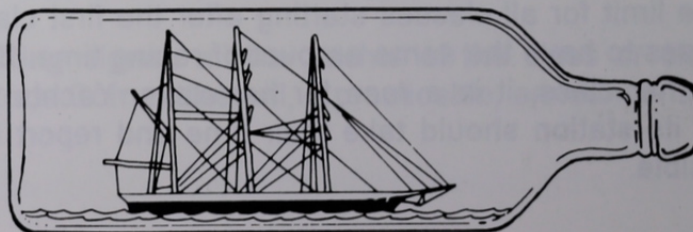
## IX. SAFETY

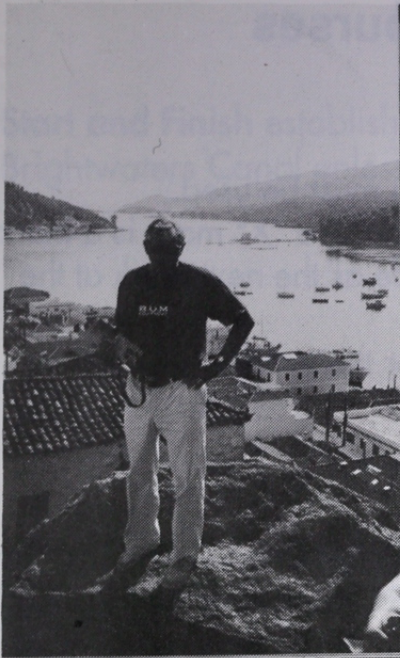
The safety of a vessel and her crew is the sole and inescapable responsibility of the skipper who must do his best to ensure that the yacht is fully found, thoroughly seaworthy, and manned by an experienced and physically-fit crew. He must be satisfied as to the soundness of hull, spars, rigging, sails and all gear. He must ensure that all safety equipment is properly maintained and stowed, and that the crew members know where it is kept and how it is to be used. He must have all safety equipment required by the U.S. Coast Guard and he should have the racing equipment suggested by the United States Sailing Association (USSA). The South Bay Cruising Club disclaims any liability for the seaworthy condition or operation of a yacht, the safety of its crew, or the absence of suitable safety equipment aboard a yacht for which the owner has sole responsibility.

It is the exclusive responsibility of each skipper to decide whether or not to start, continue, or drop out from any event. The South Bay Cruising Club does not assume any liability for the decision of any participant. Because of the increased costs of all vessels and the tendency to litigate all accidents, whether liability exists or not, the Board of Governors of the South Bay Cruising Club recommend that all owners and skippers carry liability as well as hull insurance to protect all parties from the financial consequences of an accident.

For answers to questions regarding minimum U.S. Coast Guard equipment requirements, please call the following:

**Coast Guard Safety Hotline**  
**weekdays between 8 a.m. and 4 p.m.**  
**1-800-386-5647**





# 1995 Racing Program Race Courses

## SPECIAL COURSE INSTRUCTIONS

1. When Robert Moses Causeway is in the course, the center span must be used.
2. When the designated course is signaled to be sailed twice around, the "X" mark is a mark at the course the second time around and is to be left on the same side as the next mark at the course.
3. For all Yacht Club Invitationals, see special Sailing Instruction for the event.

## BABYLON COURSES

**Start and Finish** established by the Race Committee (RC) between Willets Creek and Keith Canal. If the Finish is signaled to be at the Babylon Yacht Club Dock, the RC must determine the added course distance.

**Marks:** "X" an Orange or White SBCC Special Buoy  
Flashing Green No. 1 (G "1") off Bayberry Point  
Red Nun No. 6 (R "6") just East of Robert Moses Causeway  
Flashing Green No. 9 (G "9") off Oak Island Channel  
Flashing Green No. 11 (G "11") off Bay Shore  
Red & White Mo(A) CG (RW "CG") in Great Cove

### COURSE A

3.83 nm  
Start  
G "9" (port)  
R "6" (port)  
Finish

### COURSE B

5.63 nm  
Start  
G "9" (port)  
R "6" (port)  
"X" (port)  
G "9" (port)  
Finish

### COURSE C

4.24 nm  
Start  
R "6" (port)  
"X" (port)  
G "9" (port)  
Finish

### COURSE D

7.72 nm  
Start  
G "9" (port)  
RW "CG" (port)  
Finish

### COURSE E

9.52 nm  
Start  
G "9" (port)  
G "11" (stbd)  
G "1" (port)  
RW "CG" (port)  
R "6" (stbd)  
Finish

### COURSE F

9.9 nm  
Start  
R "6" (port)  
G "11" (stbd)  
G "1" (port)  
RW "GC" (port)  
"X" (port)  
G "9" (port)  
Finish

# BAY SHORE COURSES

**Start and Finish** established by the Race Committee (RC) 1/3 nm off (south) of the Brightwaters Canal unless otherwise specified.

**Marks:** "X" an Orange or White SBCC Special Buoy  
Flashing Green No. 1 (G"1") off Bayberry Point  
Red Nun No. 2 (R"2") off East Islip  
Flashing Red No. 4 (R"4") off Nicoll Point  
Red Nun No. 6 (R"6") just East of Robert Moses Causeway  
Flashing Green No. 9 (G"9") off Oak Island Channel  
Flashing Red No. 10 (R"10") in West Channel  
Flashing Green No. 11 (G"11") off Bay Shore  
Flashing Green No. 31 (G"31") off Blue Point  
Red & White Mo(A) GC (RW "CG") in Great Cove  
Finish at the Babylon Yacht Club (FBYC)

## COURSE A

5.77 nm  
Start  
R"6" (port)  
G"11" (stbd)  
G"1" (port)  
Finish

## COURSE B

4.43 nm  
Start  
G"11" (port)  
R"2" (port)  
Finish

## COURSE C

4.43 nm  
Start  
G"11" (port)  
G"1" (port)  
RW "CG" (port)  
G"11" (stbd)  
Finish

## COURSE D

3.43 nm  
Start  
R"10" (port)  
G"1" (port)  
Finish

## COURSE E

6.44 nm  
Start  
R"6" (port)  
G"11" (stbd)  
G"1" (stbd)  
R"10" (stbd)  
Finish

## COURSE F

9.00 nm  
Start  
R"4" (stbd)  
R"2" (port)  
R"10" (stbd)  
Finish

## COURSE G (Foulke)

29.29 nm  
Start  
G"9" (port)  
G"11" (stbd)  
G"1" (stbd)  
G"31" (port)  
G"11" (port)  
FBYC Finish

## COURSE H

9.09 nm  
Start  
R"6" (port)  
"X" (port)  
R"6" (port)  
G"11" (stbd)  
G"1" (port)  
Finish

## COURSE I

7.45 nm  
Start  
G"9" (port)  
RW "GC" (port)  
Finish

# NICOLL BAY COURSES

**Start and Finish** established by the Race Committee (RVC) in Nicoli Bay.

**Marks:** "X" an Orange or White SBCC Special Buoy  
Flashing Green No. 1 (G"1") off Bayberry Point  
Red Nun No. 2 (R"2) off East Islip  
Green Can No. 3 (G"3) in Range Channel  
Flashing Red No. 4 (R"4) off Nicoll Point  
Green Can No. 5 (G"5") off Nicoll Point  
Flashing Red No. 8 (R"8") off West Fire Island  
Flashing Red No. 10 (R"10") in West Channel  
Flashing Green No. 15 (G"15") off Point O' Woods  
Flashing Red No. 18 (R"18) in East Channel  
Flashing Green No. 29 (G"29) in mid-Nicoll Bay  
Red Nun No. 30 (R"30) in mid-Nicoll Bay  
Red & Green Quick Flash EW (RG"EW) off Saltaire

## **COURSE A**

6.15 nm  
Start  
R"4" (port)  
R"30" (port)  
Finish

## **COURSE B**

5.96 nm  
Start  
G"29" (stbd)  
G"3" (stbd)  
Finish

## **COURSE C**

6.56 nm  
Start  
G"3" (port)  
R"30" (port)  
Finish

## **COURSE D**

5.58 nm  
Start  
G"29" (stbd)  
R"4" (stbd)  
Finish

## **COURSE E**

8.16 nm  
Start  
R"4" (port)  
G"29" (stbd)  
R"18" (stbd)  
Finish

## **COURSE F**

16.90 nm  
Start  
G"15" (stbd)  
G"5" (port)  
G"1" (port)  
R"10" (port)  
R"2" (stbd)  
G"5" (port)  
Finish

## **COURSE G**

13.25 nm  
Start  
R"4" (port)  
G"29" (stbd)  
R"18" (stbd)  
R"2" (stbd)  
G"5" (port)  
Finish

## **COURSE H (West Island)**

15.76 nm  
Start  
G"5" (stbd)  
R"2" (port)  
R"10" (port)  
RG "EW" (port)  
R"8" (stbd)  
G"15" (port)  
Finish

# SAYVILLE COURSES

**Start and Finish** established east of the Sayville Yacht Club

**Marks:** Start and Finish X mark

Flashing Green 1 off Patchogue

Flashing Green 31 off Blue Point

Flashing Red 32 off Patchogue

Green Can 33 off East Patchogue

Flashing Red 34 west of Howell Point

## COURSE A

3.8 nm

Start

G"31" (port)

R"32" (port)

Finish

## COURSE B

5.7 nm

Start

G"31" (port)

G"33" (port)

Finish

## COURSE C

6.2 nm

Start

R"34" (port)

Finish

## COURSE D

2.4 nm

Start

G"31" (port)

G"1" (port)

Finish

# WATCH HILL COURSES

**Start** established by the Race Committee (RC) in vicinity of north end of the channel to Watch Hill.

**Marks:** Red Nun No. 2 (R"2") off East Islip

Green Can No. 5 (G"5") off Nicoll Point

Flashing Red No. 10 (R"10") in West Channel

Flashing Red No. 18 (R"18") in East Channel

Flashing Green No. 29 (G"29") in mid-Nicoll Bay

## COURSE A

9.74 nm

Start

R"2" (port)

Finish at R"10"

## COURSE B

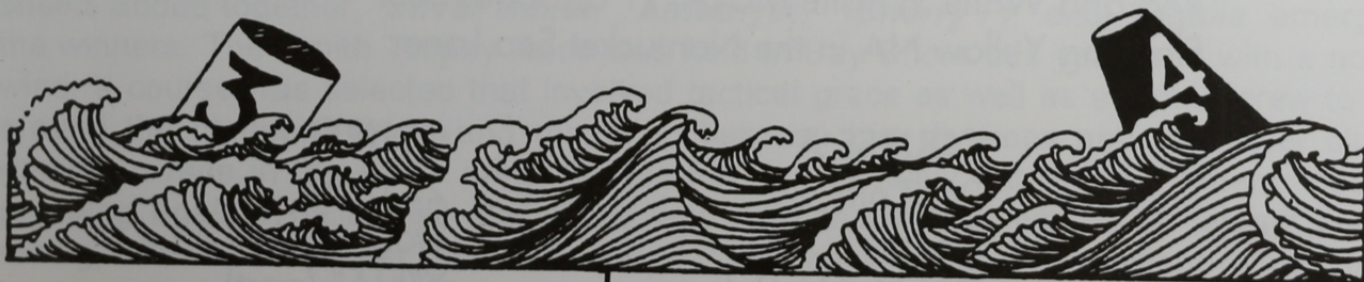
6.93 nm

Start

G"29" (port)

R"18" (stbd)

Finish at G"5"



# BAY RACES

Course distances depend upon start locale

**Marks:** Start X mark

Nun 2 off East Islip

Can 3 off Heckscher State Park

Can 5 off Nicoll Point

Flashing Red 8 off West Fire Island

Flashing Red 10 in West Channel

Flashing Green 11 off Bay Shore

Flashing Green 15 off Point O' Woods

Red & Green Quick Flash EW off Saltaire

## COURSE A

8.2 nm + 1st leg

Start

RG Q Fl"EW" (port)

R"8" (stbd)

G"15" (port)

G"5" (port)

Finish at R"2"

## COURSE B

8.1 nm + 1st leg

Start

RG Q Fl"EW" (port)

R"10" (stbd)

G"3" (port)

Finish at G"11"

## OCEAN COURSES

Special Ocean Course instructions:

- \* One hour before Warning Gun, the Race Committee at Sore Thumb will either signal a harbor start or abandonment.
- \* If the Ocean Race is abandoned, there will be a Bay Race if weather conditions permit.
- \* If the committee boat is unable to remain on station at the finish line R"4FI" shall be left to port and yachts shall record their own finish times when the buoy bears abeam of the yacht's stern. Such finish times shall be reported to the race committee as soon as is practical.

**Start and Finish** established between the committee boat and Flashing Red Whistle No. 4 FI

**Marks:** Flashing Red Whistle 4 FI off Fire Island Inlet

Red and White Whistle MO(A) J1 off Jones Inlet

Flashing Yellow NA in the Nantucket Sea Lane

## COURSE A

26.7 nm

Start

RW Mo(A) J1 (port)

Finish

## COURSE B

22.0 nm

Start

Y"NA" (port)

Finish

## THE 1994 RACING YEAR IN REVIEW

From the log of "Silver Bullet" by James D. Reichel

The 1994 racing schedule was filled to capacity this year with races during almost every weekend. Race Chairman Frank Marinaccio did his best to promote new racing venues by adding the GSBYRA invitationals. This year Great River Race Week was dropped, much to the disappointment of the few racers who attended the event regularly. Racing in the club has been steadily on the decline, and it was hoped that participation this year would be improved by changing the schedule.

The race season took off as usual with the tune-ups and Twilight races in May. The first big event, the single-handed Creepstakes during Commissioning Day was very well attended. The regulars were there in force with a few of the bigger boats finally trying to make their way around the course without hitting anyone.

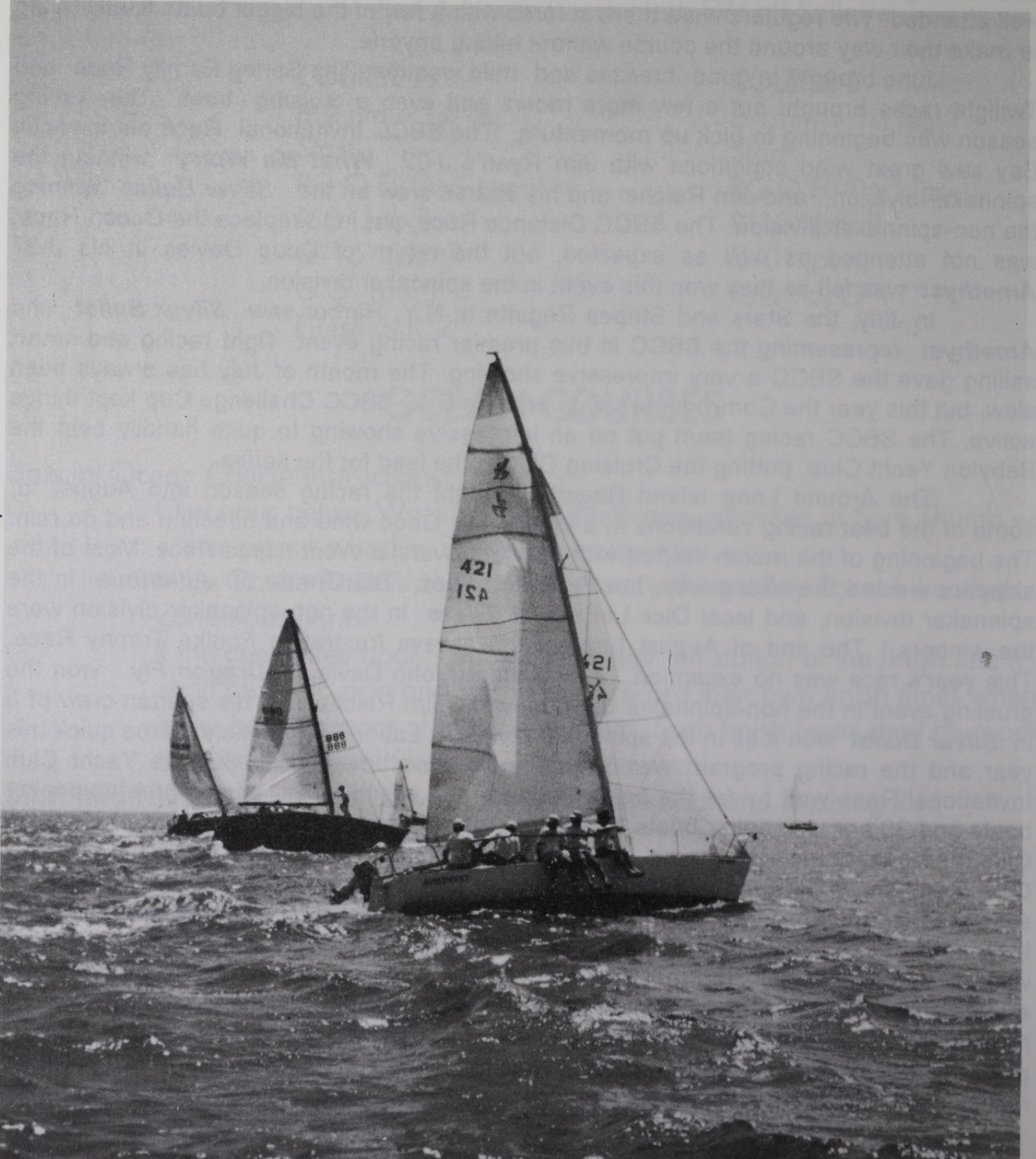
June brought in good breezes and mild weather. The Spring Family Race and Twilight races brought out a few more racers and even a cruising boat. The racing season was beginning to pick up momentum. The SBCC Invitational Race out in Nicoll Bay saw great wind conditions with Jim Ryan's J-22 **What Me Worry** winning the spinnaker division, and Jim Reichel and his sparse crew on the **Silver Bullet** winning the non-spinnaker division. The SBCC Distance Race, put in to replace the Ocean Race, was not attended as well as expected, but the return of Doug Davies in his J-27 **Amethyst** was felt as they won this event in the spinnaker division.

In July, the Stars and Stripes Regatta in N.Y. Harbor saw **Silver Bullet** and **Amethyst** representing the SBCC in this premier racing event. Tight racing and smart sailing gave the SBCC a very impressive showing. The month of July has always been slow, but this year the Commodore's Cup and the BYC-SBCC Challenge Cup kept things active. The SBCC racing team put on an impressive showing to quite handily beat the Babylon Yacht Club, putting the Cruising Club in the lead for the series.

The Around Long Island Regatta brought the racing season into August for some of the best racing conditions in a long time. Good wind and direction and no rain. The beginning of the month started with the controversial West Island Race. Most of the skippers elected the wrong way, but the smart ones, Bill Grauer of **Ailanthus** in the spinnaker division, and local Dick LaBella in **Blaze** in the non-spinnaker division were the winners. The end of August brought the always frustrating Foulke Trophy Race. This year's race was no exception. A persistent John Davis in **Dragon Fly** won the grueling event in the non-spinnaker division, while Jim Reichel and his spartan crew of 3 in **Silver Bullet** won it all in the spinnaker division. Labor Day weekend came quick this year and the racing program was beginning to wind down. The Sayville Yacht Club Invitational Race was by far the best attended race event on the bay. Three spinnaker boats and 30 non-spinnaker boats hit the line for some very interesting racing. Cruising Club members dominated the point standings, much to the dismay of the Sayville Yacht Club members who attended the evening party. When all the dust settled, and the score sheets added together, **Silver Bullet**, **Amethyst**, **Cherry Pi**, and **Tequila** emerged the winners. The Smith Trophy Race was held in Bay Shore this year, and with a north wind, a course was selected that involved tactical grace as well as a strong crew to go around the course 3 times and mix it up between two divisions and two other clubs running a race in the same area. It was fun and certainly got the old timers hearts pumping again. The Ladies Day Race was held this month with 2 all female crews racing, with **Silver Bullet** and her crew of 6 women winning. The Twilight races finally

wrapped up with great disappointment. They ended too soon. Frank Marinaccio in **Cherry Pi** and Greg Schneller in **Mirage** dominated their divisions all season long.

October and November are usually cold and wet sailing months on the weekends or no wind. This year it was better. The never ending summer had finally arrived. No need to think of hauling because it was still summer. The last races of October brought the season championship contenders into a point standings battle. Calculations were down to the last race. Who would show up, how many boats will make it, all made a difference in the final points. John Davis in **Dragon Fly** barely won over Paul Rendich's **Slim** in the non-spinnaker division, and Jim Ryan in **What Me Worry** won easily in the spinnaker division. In the last race of the year, the Turkey Race, quite a few boats showed up for that final sail. Blustery conditions with very low tides made for an interesting race, and a great way to end the racing year.



# SBCC PERPETUAL TROPHIES

## COMMODORE'S CUP

1985	Firewater II
1986	Firewater II
1987	Blue Thunder
1988	Merry Ann
1989	White Squall
1990	Silver Bullet
1991	Amethyst
1992	Richochet
1993	Sunriser
1994	What Me Worry?

## DEALE TROPHY

1985	Sunriser
1986	Tachyon
1987	True Love
1988	Spirit
1989	Cherry Pi
1990	Ailanthus
1991	Like, Wow!
1992	Mirage
1993	Windshadow
1994	Ailanthus

## FOULKE TROPHY

1985	Blaze
1986	Firewater II
1987	Amethyst
1988	Jacqueline II
1989	Firewater II
1990	What Me Worry?
1991	Jacqueline II
1992	Quest
1993	Mirage
1994	Silver Bullet

## GOVERNOR'S CUP

1985	Cherry Pi
1986	Blaze
1987	Rhapsody
1988	Orion
1989	Cherry Pi
1990	Firewater II
1991	Firewater II
1992	Windshadow
1993	What Me Worry?
1994	What Me Worry?

## SCHNUR TROPHY

1975	Free Wind
1976	Valkyrie
1977	Argos
1978	'Glas Menagerie
1979	Strawberry Fields
1980	Thunder Cloud
1981	Windswept
1982	Menger Cat
1983	Lady Bug
1992	Slim
1993	Last Fling

## SMITH TROPHY

1985	Curlew
1986	Mirage
1987	Amethyst
1988	Firewater II
1989	White Squall
1990	Firewater II
1991	What Me Worry?
1992	Mirage
1993	What Me Worry?
1994	What Me Worry?

## BROADSIDE TROPHY

*Ladies' Day Race*

*(First, All-Girl Crew)*

1972	Banshee
1973	Too Much
1974	Banshee
1975	Banshee
1976	Liebchen
1977	Summerwind
1978	Firefly II
1979	Summerwind
1980	Mandalay
1981	Banshee

## CRUISING CLUB CROCK

*Best Corrected Time in the  
Around Long Island Race*

1985	Alchemist
1986	Jacqueline II
1987	Diane
1988	Wild Rover
1989	Jacqueline II
1990	Barleycorn
1991	Barleycorn
1992	Ravin
1993	Raven
1994	Barleycorn

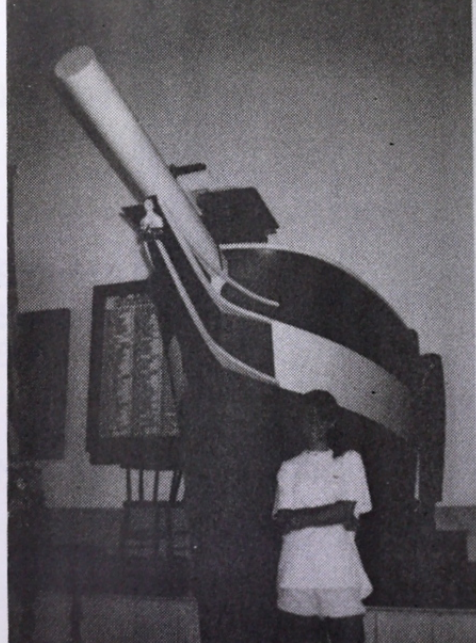
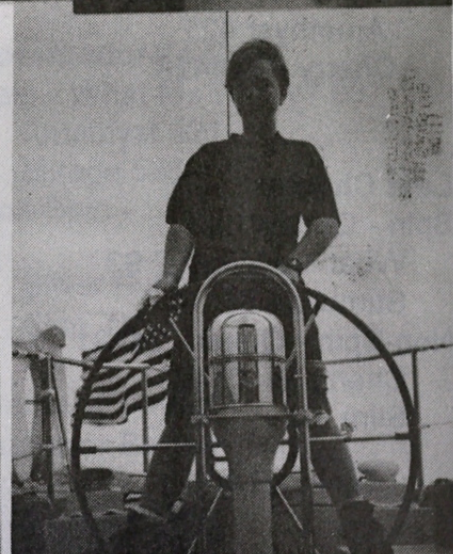
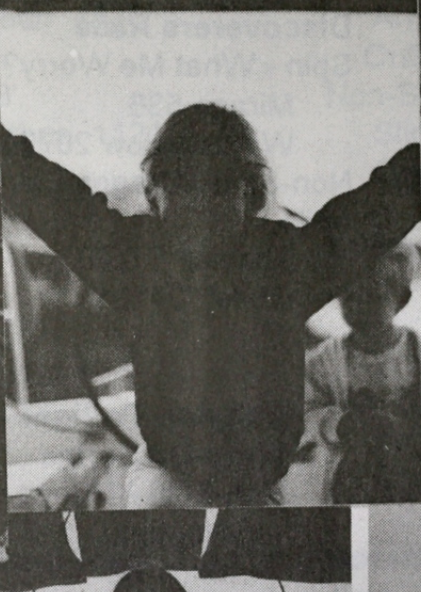
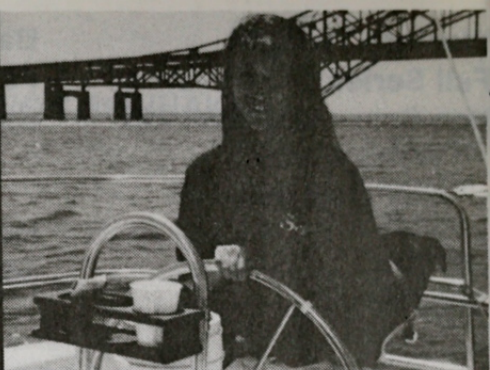
## PATRICIA A. KELLY TROPHY

1985	Cherie
1986	Blue Thunder
1987	Orion
1988	Lucky Bark III
1989	Catharsis
1990	Silver Bullet
1991	What Me Worry?
1992	Absolut
1993	Dragon Fly
1994	Silver Bullet

## CARY PEARSALL TROPHY

1993	Cherry Pi
1994	Mirage





# 1995 RENDEZVOUS and RACING SCHEDULE

<u>Date</u>	<u>Day</u>	<u>Event</u>	<u>Location</u>	<u>Chairman</u>	<u>Vessel</u>	<u>Warm</u>	<u>Start</u>	<u>Notes</u>	<u>Course</u>
May 6	Sat.	Rendezvous	Hemlock Cove	M/R Kohl	Hydrotherapy				
May 13	Sat.	Mother's Day	Patchogue River	C/P Avalos	Lady Barbara				
May 20	Sat.	East End Rendezvous	Great River	F/B Peter	Reynard				
		West End Rendezvous	Oak Island Lead	J/B Nielsen	Lady Barbara				
		Tune-Ups #1 & #2	Babylon	W. Grauer		1100	Reg	2,3,13	A-F
May 24	Wed	W. Twi Spring #1	Bay Shore	B. Pittman		1930	Reg	2,4	A-E
May 25	Thu.	Bab. Twi Spring #1	Babylon	R. Rose		1930	NoSp	2,4	A-D
May 27	Sat.	Rendezvous	Hemlock Cove	E/K Simmons	Fenian				
May 29	Mon.	Commissioning Day	Babylon YC	Hospitality					
		Creepstakes	Babylon	A. Eppig		1100	Crpstks	1,10	A-D
May 31	Wed	W. Twi Spring #2	Bay Shore	T. Hangarter		1930	Reg	2,4	A-E
June 1	Thu	Bab. Twi Spring #2	Babylon	J. Dudek		1930	NoSp	2,4	A-D
June 3	Sat.	South of the Border	Great River	J/M Schwartz	Wandelaar				
June 7	Wed	W. Twi Spring #3	Bay Shore	H. Smith		1930	Reg	2,4	A-E
June 8	Thu.	Bab. Twi Spring #3	Babylon	E. Turner		1930	NoSp	2,4	A-D
June 10	Sat.	Spring Family Weekend	Watch Hill	R/A Sanalistro	Summer Whim				
June 11	Sun.	Spring Family Race	Watch Hill	J. Nielsen		TBA	NoSp	1	B
June 14	Wed	W. Twi Summer #1	Bay Shore	B. Camp		1930	NoSp	2,4	A-E
June 15	Thu.	Bab. Twi Summer #1	Babylon	G. Schneller		1930	Reg	2,4	A-D
June 17	Sat.	Father's Day Rendezvous Founder's Cup	Great River Bay Shore	L/D Lowy Crocker/Baldwin	First Light	1200	Expd	7	A-I

<u>Date</u>	<u>Day</u>	<u>Event</u>	<u>Location</u>	<u>Chairman</u>	<u>Vessel</u>	<u>Warn</u>	<u>Start</u>	<u>Notes</u>	<u>Course</u>
June 21	Wed	W. Twi Summer #2	Bay Shore	W. Wheeler		1930	NoSp	2,4	A-E
June 22	Thu.	Bab. Twi Summer #2	Babylon	E. Brooks		1930	Reg	2,4	A-D
June 24	Sat.	Family Fun Regatta Ocean Race	Great River Ocean	E/J Petroske J. Ryan	Jubilation	1100	Expd	7	A-C
June 28	Wed	W. Twi Summer #3	Bay Shore	K. Padden		1930	NoSp	2,4	A-E
June 29	Thu.	Bab. Twi Summer #3	Babylon	J. Reichel		1930	Reg	2,4	A-D
July 1	Sat.	Begin 3-Week Cruise	Great River	F/B Peter	Reynard				
		Rendezvous	Hemlock Cove	J/B Nielsen	Lady Barbara				
		Babylon YC Invit. I	Babylon	D. Daytz	Tranquilizer				
		Stars & Stripes Regatta	NYC	BYC		1300	Reg	2	TBA
				Newsday		TBA	Spec	11	TBA
July 2	Sun.	Babylon YC Invit. II	Babylon	BYC		1300	Reg	2	TBA
		Stars & Stripes Regatta	NYC	Newsday		TBA	Spec	11	TBA
July 5	Wed	W. Twi MidSummer #1	Bay Shore	T. Penn		1930	Reg	2,4	A-E
July 6	Thu.	Bab. Twi MidSummer #1	Babylon	R. Forman		1930	NoSp	2,4	A-D
July 8	Sat.	Begin Alt. 3-Week Cruise	Great River	R/A Sanalidro	Summer Whim				
		Begin 2-Week Cruise	TBA	TBA	TBA				
		Sink & Swizzle Rendezvous	Hemlock Cove	R/G LaTorre	Carefree				
		LIMM Invitational #1	W. Sayville	LIMM		1300	TBA		TBA
July 9	Sun.	LIMM Invitational #2	W. Sayville	LIMM		1200	TBA		TBA
July 12	Wed	W. Twi MidSummer #2	Bay Shore	B. Cook		1930	Reg	2,4	A-E
July 13	Thu.	Bab. Twi MidSummer #2	Babylon	J. Davis		1930	NoSp	2,4	A-D
July 15	Sat.	Rendezvous GREAT RIVER CUP	Oak Island Lead Nicoll Bay	R/S Czach A. James	Shootin' the Breeze	1200	Expd	7	A-H

<u>Date</u>	<u>Day</u>	<u>Event</u>	<u>Location</u>	<u>Chairman</u>	<u>Vessel</u>	<u>Warn</u>	<u>Start</u>	<u>Notes</u>	<u>Course</u>
July 19	Wed	W. Twi Mid Summer #3	Bay Shore	R. Colombo		1930	Reg	2,4	A-E
July 20	Thu.	Bab. Twi MidSummer #3	Babylon	J. Milano		1930	NoSp	2,4	A-D
July 22	Sat.	Rendezvous COMMODORE'S CUP	Great River Nicolli Bay	J/A Dudek D. Davies	Jam V	1200	Expd	7,9	A-H
July 23	Sun.	BYC-SBCC Challenge	Babylon	BYC		1300	Spec	1,10	A-F
July 27	Thu.	GSBYRA Race Week #1 Around L.I. Race	Bay Shore Richmond YC	GSBYRA Newsday		1300	Reg	12	TBA
July 28	Fri.	GSBYRA Race Week #2 Around L.I. Race	Bay Shore	GSBYRA		1300	Reg	12	TBA
July 29	Sat.	Rendezvous GSBYRA Race Week #3 Around L.I. Race	Hemlock Cove Bay Shore	J/D Schlitt GSBYRA	Pzaz	1300	Reg	12	TBA
July 30	Sun	GSBYRA Race Week #4 Around L.I. Race	Bay Shore	GSBYRA		1300	Reg	12	TBA
Aug. 2	Wed	W. Twi Late Summer #1	Bay Shore	R. Dean		1900	NoSp	2,4	A-E
Aug 3	Thu	Bab. Twi Late Summer #1	Babylon	S. Brice		1900	Reg	2,4	A-D
Aug 4	Fri.	TGIF Race	Nicolli Bay	L. Costelloe		0400	Reg		A-G
Aug 5	Sat.	Trivial Pursuit Rendezvous SBCC Invitational #1 & #2	Great River Nicolli Bay	R. Kohler J. Keeley	A Yacht of Patience	1100	Reg	3,13	A-G
Aug 6	Sun.	SBCC Invitational #3	Nicolli Bay	G. Schwarting		1300	Reg		A-G
Aug 9	Wed	W. Twi Late Summer #2	Bay Shore	L. Becker		1900	NoSp	2,4	A-E
Aug 10	Thu.	Bab Twi Late Summer #2	Babylon	J. Grover		1900	Reg	2,4	A-D
Aug 12	Sat.	Rendezvous Great River Blast WEST ISLAND RACE Unqua YC Invitational I	Great River Great River Nicolli Bay Amityville	R/A Sanalidro Hospitality J. Buckman Unqua YC	Summer Whim Committee	1200 1300	Expd TBA	1,5,9	H TBA

<u>Date</u>	<u>Day</u>	<u>Event</u>	<u>Location</u>	<u>Chairman</u>	<u>Vessel</u>	<u>Warn</u>	<u>Start</u>	<u>Notes</u>	<u>Course</u>
Aug 13	Sun.	Champagne Breakfast	Great River	Hospitality	Committee				
Aug 13		Begin 1-Week Bay Cruise	Great River	TBA					
		Unqua YC Invitational II	Amityville	Unqua YC		1200	TBA		TBA
Aug 16	Wed	W. Twi Late Summer #3	Bay Shore	S. Penny		1900	NoSp	2,4	A-E
Aug 17	Thu	Bab Twi Late Summer #3	Babylon	J. Dunnells		1900	Reg	2,4	A-D
Aug 19	Sat.	Scavenger Hunt Rendez.	Great River	J/L Reichel	Silver Bullet				
Aug 20	Sun.	Wet Pants Invitational I	Sayville	Wet Pants SA		1300	TBA		TBA
		Wet Pants Invitational II	"	"		1000	"		"
Aug 23	Wed	W. Twi Fall #1	Bay Shore	R. LaBella		1900	NoSp	2,4	A-E
Aug 24	Thu.	Bab Twi Fall #1	Babylon	M. O'Connell		1900	NoSp	2,4	A-D
Aug 25	Fri	Mid-Week Rendezvous	Watch Hill	R/A Sanalidro	Summer Whim				
Aug 26	Sat.	Mid-Week Rendezvous	Watch Hill	"	"				
Aug 27	Sun.	Sayville YC Invitational #1	Sayville	SYC	Summer Whim	1300	SYC	2	TBA
		Sayville YC Invitational #2	"	"		1200	"	2	"
Aug 30	Wed	W. Twi Fall #2	Bay Shore	L. Christiansen		1900	NoSp	2,4	A-E
Aug 31	Thu	Bab. Twi Fall #2	Babylon	R. Saganic		1900	NoSp	2,4	A-D
Sept 2	Sat.	Rendezvous	Sayville YC	B. Pittman					
		Bellport YC Invitational #1	Bellport	BYC		1330	BYC		TBA
Sept 3	Sun.	SYC Jack's Trophy #1	Sayville	SYC		1300	SYC	2	TBA
		Bellport YC Invitational #2	Bellport	BYC		0930	BYC		TBA
		SYC Jack's Trophy #2	Sayville	SYC		1300	SYC	2	TBA
Sept 4	Mon.	Bellport YC Invitational #3	Bellport	BYC		1030	BYC		TBA

<u>Date</u>	<u>Day</u>	<u>Event</u>	<u>Location</u>	<u>Chairman</u>	<u>Vessel</u>	<u>Warn</u>	<u>Start</u>	<u>Notes</u>	<u>Course</u>
Sept 6	Wed.	W. Twi Fall #3	Bay Shore	D. Johnson		1900	NoSp	2,4	A-E
Sept 7	Thu.	Bab. Twi Fall #3	Babylon	E. Miller		1900	NoSp	2,4	A-D
Sept 9	Sat.	Great River Clean-up West End Rendezvous FOULKE TROPHY	Great River Hemlock Cove Bay Shore	R/A Sanalidro J. McCormack P. Rendich	Summer Whim Saltheart	1800	Expd	6,7,9,10	G
Sept 13	Wed	W. Twi Wrap-Up #1	Bay Shore	M. Schoenwald		1900	NoSp	2,4	A-E
Sept 14	Thu.	Bab. Twi Wrap-Up #1	Babylon	M. Goodman		1900	NoSp	2,4	A-D
Sept 16	Sat.	Rendezvous SMITH TROPHY	Sailor's Haven Bay Shore	J/D Becker R. Schwartz	Counterpoint	1200	Expd	7,9	A-I
Sept 17	Sun.	LADIES' RACE	Bay Shore	T. Jones		1200	NoSp	1,9	A-E
Sept 20	Wed.	W. Twi Wrap-Up #2	Bay Shore	T. Drossos		1900	NoSp	2,4	A-E
Sept 21	Thu.	Bab. Twi Wrap-Up #2	Babylon	D. Hyer		1900	NoSp	2,4	A-D
Sept 23	Sat.	Birthday Rendezvous BYC-Louie Orr Invt.	Atlantique Babylon	T/B Poulos BYC	Second Edition	1300	Reg	2,10	TBA
Sept 24	Sun.	Babylon Mayor's Cup	Babylon	LIYC		1300	TBA	11	TBA
Sept 27	Wed.	W. Twi Wrap-Up #3	Bay Shore	F. Marinaccio		1900	NoSp	2,4	A-E
Sept 28	Thu.	Bab Twi Wrap-Up #3	Babylon	K. Padden		1900	NoSp	2,4	A-D
Sept 30	Sat.	Rendezvous	Sailor's Haven	E/K Simmons	Fenian				
Oct 1	Sun	Discoverer's Race	Bay Shore	R. VanTassell		1200	Expd	7	A-I
Oct 7	Sat.	Fall Family Weekend	Watch Hill	L/D Lowy B/B Kimbell	Firstlight Jean's Starr Shootin' the Breeze				
Oct 8	Sun.	Fall Family Race	Watch Hill	R. Czach		TBA	NoSp	1	B

<u>Date</u>	<u>Day</u>	<u>Event</u>	<u>Location</u>	<u>Chairman</u>	<u>Vessel</u>	<u>Warn</u>	<u>Start</u>	<u>Notes</u>	<u>Course</u>
Oct 14	Sat.	East End Rendezvous	Great River	R/S Czach	Shootin' the Breeze				
		West End Rendezvous	Unqua Heading	J/D Ferguson	Stardust				
		Last Chance	Bay Shore	M. Kind		1100	Expd	7	A-I
Oct 21	Sat.	Rendezvous	Atlantique	E/J Petroske	Jubilation				
Oct 28	Sat.	Hallowe'en Rendezvous	Atlantique	M/R Kohl	Hydrotherapy				
Nov 25	Sat.	Turkey Race	Babylon	J. Epstein		1200	Reg		A-F
Jan 1 '96	Mon.	New Year's Race	Babylon	TBA		1200	NoSp		A-F

TBA = To Be Announced

LIMM = Long Island Maritime Museum, West Sayville

### Notes to Racing Schedule

1. See INSTRUCTIONS III.D
2. See INSTRUCTIONS III.C
3. Time Limit 1345 for AM race
4. Time Limit 2230
5. Time Limit 1900
6. No Time Limit
7. Counts toward season class championship
8. Abnormal
9. Winners in races shown in ALL CAPS qualify for Perpetual Trophies. See INSTRUCTIONS IV.F
10. Finish at Babylon Yacht Club dock.
11. Race application required.
12. GSBYRA RACE WEEK requires an entry fee and registration.
13. Start of second race to be announced by the Race Committee.

# SOUTH BAY CRUISING CLUB

## NOTES TO SOCIAL AND CRUISING SCHEDULE

1. Refer to Cruising Guide for directions to rendezvous location.
2. Details to be published in "From the Masthead" or otherwise furnished at a later date.

### AWARDS:

**Cruising Award** — This award is given for participation in any of the Club's organized cruises. To qualify, a yacht must anchor or tie-up with the fleet for at least 50% of the time designated for a cruise by the Fleet Captain. The Cruise Captain will submit a list of yachts eligible, based on cruise attendance records.

**The Rendezvous Awards** are made, at the Fleet Captain's discretion, to boats that attend a minimum number of rendezvous.

**Green Water Award** — for a cruise of greater distance and duration than the official cruises.

**Blue Water Award** is made only as recognition for an extended cruise off soundings. A select committee, along with the Fleet Captain, will review candidates and make this award only when they deem the cruise to be an outstanding achievement.

### Blue Water Awards:

1952 - Jack Young (Doc Hamlin special award)	1969 - Chet Phipps
1953 - R.W. Bennett	1972 - Arthur Sternberg, M.D.
1964 - Art Flynn	1973 - Bill Milligan
1965 - Stuart Baldwin (Ed Macy special award)	1979 - Bob Wissman
1966 - Ed Macy	1980 - Edgar Sabbeth
1967 - Ed Forsyth	1987 - Russ Colombo
1968 - Jack Young (Don Streit & Ed Ricketts special awards)	1990 - Bob Forman
	1991 - Rich Czach
	1992 - Eric Forsyth

### Green Water Awards:

1985 - Frank & Joyce Holwell	1988 - Frank & Joyce Holwell
1985 - Bill & Barbara Dunleavy	1989 - Roger Goodwin
1987 - Harry Wilburger	1992 - Mitch & Shirley Silbert

## THE SBCC RENDEZVOUS

All hands are invited — members and their children, their guests and their pets. Notifying anyone in advance is not necessary, nor must you arrive at any particular time. Each rendezvous has a designated *Rendezvous Captain* who has been appointed by the Fleet Captain to act as host boat and will be known by the very large Club Burgee. Check in to get credit for attendance and to be included in any special entertainment that may be planned.

## RAFT-UP PROCEDURE

It has always been a tradition that no invitation is necessary to join a raft-up at any SBCC rendezvous. All you have to do is ask politely "May I come alongside?"

General speaking, you should expect to use fenders and put down your own anchor when rafting so that boats on either side of you can withdraw with a minimum of fuss. When you wish to cross somebody's deck to reach another boat, it's polite to ask permission and to cross via the foredeck, if possible. If you are joining a group aboard another boat, it's customary in the SBCC to bring your own drinks and to contribute to the snacks.

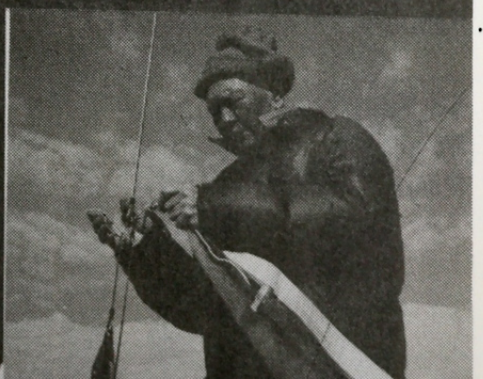
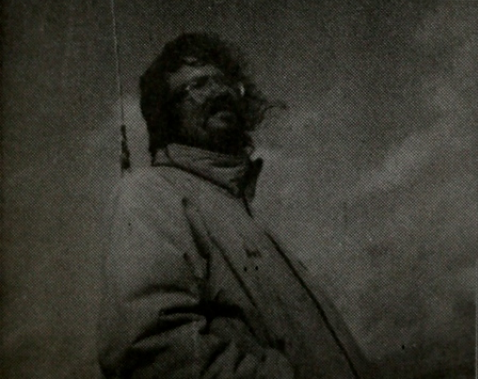
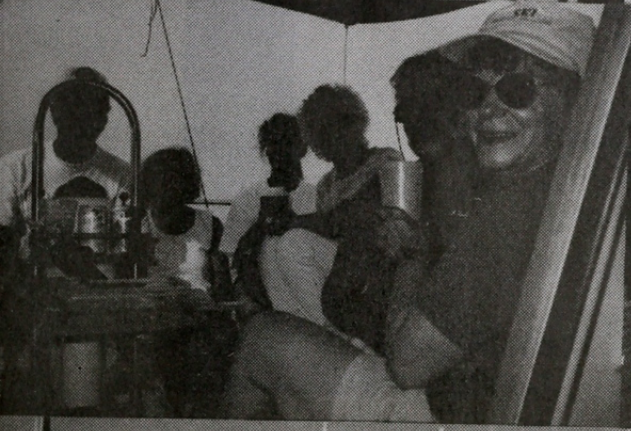
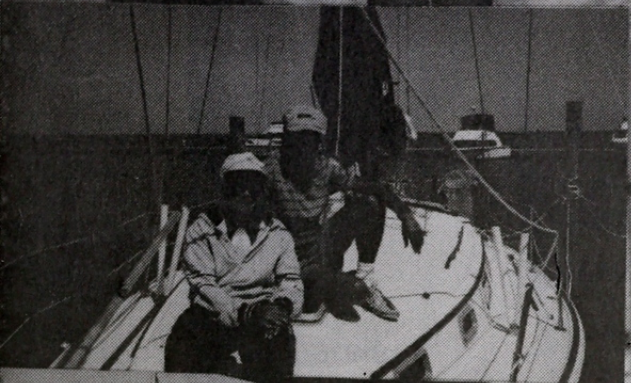
Do any boats remain rafted all night? Sure! But, as a rule, only close friends and long time cruise mates. Usually it's better, if in doubt, to withdraw quietly and go anchor nearby.

## CRUISES

Early in the spring, the Fleet Captain and the Cruise Committee scout among the membership for opinions and work out tentative cruise itineraries. A shorter close-in cruise is often suggested, such as Peconic Bay-Shelter Island area, as well as a more extensive cruise to New England or Chesapeake Bay. A local *Around the Bay* cruise is also scheduled.

The Fleet Captain appoints Cruise Captains — usually skippers who have had experience in going to the ports outlined — to work out a rough-draft itinerary which is published in the *Masthead* and then presented to the membership at the March meeting. Debate ensues, adjustments are made based on an attained consensus. All is duly noted by the Cruise Captains who prepare a final, more detailed itinerary. Additional meetings are held to review the itinerary and share concerns.

During the Cruise, the itinerary may be adjusted to suit weather conditions or the whims of sailors and their families. Sometimes an anchorage is just too delightful to leave. Cruise Captains usually try to get the entire fleet together at least once or twice during the cruise



# CRUISING AWARDS - 1994 SEASON



**Sheila Daytz Award - 21 Rendezvous**  
*Lady Barbara - Jack & Barbara Nielsen*

## **Past First Place Winners**

1993 - Fenian and Saltheart  
1992 - Lady Barbara (1395)  
1991 - Second Edition  
1990 - Lady Barbara  
1989 - Shootin' the Breeze

**20 Rendezvous**  
Fenian

**17 Rendezvous**  
Saltheart

**16 Rendezvous**  
Shootin' the Breeze

**13 Rendezvous**  
Firstlight  
Reynard

**11 Rendezvous**  
Njord  
Zepher

**10 Rendezvous**  
Counterpoint  
Hydrotherapy  
Jubilation  
Lion Hearted  
Second Edition

**9 Rendezvous**

Jean's Star

**8 Rendezvous**Fox  
Jam V  
Summer Whim  
Wandelaar**7 Rendezvous**Saga II  
Silhouette**6 Rendezvous**Eagle  
Lady Barbara (#105)  
Silver Bullet  
Stardust  
Voodoo Lady**5 Rendezvous**Bagheera  
Busman's Holiday  
Dragon's Den  
Oh Baby  
Pursuant  
Pzaz**4 Rendezvous**Carefree  
Catharsis  
Emerald Seas  
Lorna Doone  
Me'N Thee  
Moonraker  
Phantom  
Quest**THREE WEEK HYANNIS CRUISE****Captains: Ron & Ann Sanalidro**Catharsis  
ReynardJubilation  
Second EditionLady Barbara (1395)  
Summer Whim**TWO WEEK "AS THE WIND BLOWS" CRUISE****Captains: Jack & Barbara Nielsen  
Ted Arnold**Fox  
Lady Barbara (1395)  
Phantom

Kitty K

Lady Barbara (105)  
Me'N Thee  
Sea Dream**ONE WEEK BAY CRUISE****Captain: Bernadette Poulos**Aeolus  
Counterpoint  
Kariana  
Lagniappe  
Papillon  
Second EditionBroadbill  
Fox  
Karma  
Me 'N Thee  
Perry  
SilhouetteCarefree  
Jean's Starr  
Kittiwake  
Oh Baby  
Saga II  
Sugar & SpiceChar-Lynn  
Judi Ann  
Lady Barbara (1395)  
Our Time  
Sea Dream  
Virgo

# 1994 CRUISING YEAR IN REVIEW

## Three Week Cruise to Hyannis---July 2nd to July 25th, 1994 From the Log of *Summer Whim*

The two and three week cruises departed together on the morning of July 2nd from two points, Great River and Sore Thumb. *Jubilation*, *Second Edition* and *Summer Whim* chose the ocean route while *Kitty K*, *Lady Barbara*, *Me'N Thee*, *Phantom*, *Reynard* and *Sea Dream* traveled the inland waters. Unfortunately, fog proved to be a problem which only intensified as the day progressed. This made for a very slow journey with much anchoring along the way for the inland group and a very difficult passage through a fog-veiled Shinnecock Inlet for the rest. However, everyone safely made their way to Cormorant Point and relaxed with friends awaiting our trip to Montauk the following day.

At 0630 hrs. on July 3rd, we cleared the breakwater at Shinnecock Inlet heading out to the RW "SH" MO(A) whistle and, as luck would have it, we lost all our electronics! Luckily, the sky was just hazy and the seas calm with no wind. As we progressed to Lake Montauk the current became favorable, a light rain fell, and the seas remained calm. The fleet, now spread out along the route, would eventually join up at Lake Montauk and enjoy dinner at Gosman's and a great fireworks display over the lake afterward.

Our next port, 3 Mile Harbor, proved to be delightfully relaxing. Most of the boats picked up available moorings while a few anchored. Some of us dinked to the local beach, explored this beautiful harbor and discovered Bostwick's, a good restaurant hidden in a cove. As a matter of fact, everyone enjoyed it so much that they chose to take a lay-day here instead of going to Coecles Harbor.

By the morning of July 6th we were refreshed and ready for our trip to Mystic Seaport. Departure was planned for 0700 hrs., but our anchor was deep due to the 4-boat raft so we were somewhat delayed. As we cleared Gardiner's Island, we were pleased to hear *Catharsis* on the radio. They were catching up with the group, eventually meeting us at Mystic. At 0900 hrs. we entered the Sound off Plum Island. The weather was warm, hazy and very calm. A few of us tried fishing as we approached Fisher's Island but caught only lobster pots! We traveled up the well-marked channel to Mystic Seaport and our only obstacle was the Mystic Town Bridge which gave us an opportunity to practice our circling!

The boats from both the two and three week cruises would remain in Mystic for two days enjoying the sights of the Seaport and neighboring town while sweltering in the first real heat and humidity of the summer. On the evening of July 7th everyone gathered aboard *Summer Whim* for a huge cocktail party prior to the separation of the two cruises the following day.

July 8th found the two week cruise heading back to the Peconics, *Second Edition* going ahead to Newport and *Catharsis*, *Jubilation*, *Reynard* and *Summer Whim* remaining at Mystic one more day before departing for Dutch Harbor.

As we began the next leg of our journey east, we experienced problems with fog once again, being forced to anchor at the mouth of the Mystic River before proceeding. Several other club boats not on the cruise seemed to think this was a good idea and joined us. With partial visibility we eventually pressed on and finally came out of the fog the further east we sailed. We arrived at Dutch Harbor to find crowded and lumpy conditions. After anchoring, everyone came aboard *Summer Whim* for dinner which was interrupted by a Chinese fire drill due to extreme current and wind shifts. A few of us found moorings and everyone settled down for the evening.

Sunday, July 10th, dawned and we all had the urge to explore land so we hailed the launch and then walked across Conanicut Island. As we walked towards Jamestown we stopped in a great bakery and spotted an interesting looking Italian restaurant complete with a jazz group. This would turn out to be an outstanding impromptu lunch for the whole group that afternoon. We enjoyed this island so much that we put off our departure for Wickford until later in the day.

Our stay in Wickford was also a pleasant one. We picked up moorings from the Wickford Yacht Club which we later visited. We exchanged burgees, received a tour of their club from the house manager and enjoyed a conversation about the club and the area with a past Commodore. Everyone was extremely congenial! The town was as quaint as we had remembered and we enjoyed meandering through it.

Under beautiful sunny skies we departed for our home away from home, Newport! Unfortunately there was no wind and although we attempted sailing, it was futile and the engines were needed again. Of course, as we passed Fort Adams and entered Newport Harbor, the winds began to howl. All the boats took slips at Newport Yachting Center where we would remain for the next two days. During these days the group shopped, swam at the Marriott, toured mansions, ate a great informal lobster dinner under the tent at the marina, reprovisioned and hiked totally across the island in search of a lobster dinner bargain which did not materialize! Oh well, it was great exercise and a lot of laughs! Newport is always an exciting place to visit.

On the morning of July 14th we were forced to pull ourselves away from this famous town and head for our next port, Hadley Harbor. It was a beautiful morning and we anticipated a lovely sail. *Catharsis* experienced mechanical problems but caught up with us before long. To our surprise, the seas continued to build in Buzzard's Bay forcing us to alter our plans and duck into Cuttyhunk where we luckily grabbed some of the last available moorings. The weather and the 35 knot winds in the harbor kept us at Cuttyhunk an extra day.

By Saturday, July 16th, the weather had greatly improved and we had a lovely sail up Buzzard's Bay, through Woods Hole and out to Hyannis. Somehow we all avoided being swallowed up by the large ferries that shadowed us to the inner harbor where *Catharsis*, *Jubilation*, *Reynard* and *Summer Whim* were rejoined by *Second Edition*. Hyannis Marina gave us our own private T-dock which was tricky backing into, but delightfully close to the pool and entertainment, and very handy for our dockside (power boat) dinners. We were also joined at Hyannis by *Lady Barbara (1395)* and *Fox* who, of course, anchored nearby.

Everyone remained through July 17th, touring the town, the Cape Cod Candle Factory, playing miniature golf (Ronald's choice), swimming and enjoying "Tugboat's", a great restaurant located on the grounds of the marina.

On July 19th we departed from Hyannis late morning after awaiting repairs to *Jubilation*. A 10 knot wind allowed for some nice sailing. Eventually the direction changed, as usual, and was on the nose from 10 to 20. To make up for lost time we decided to skip Hadley Harbor and go directly to Cuttyhunk. This proved to be a good choice as we were totally fogged in by dark. At this point, *Catharsis*, *Jubilation*, *Lady Barbara (1395)*, *Reynard* and *Summer Whim* were together and *Second Edition* was enroute from Martha's Vineyard.

We awoke to dense fog on the 20th and, for added excitement, there were a few hours during which all LORANs were inoperative. Those were our clues that this was not going to be a good day! Nobody was leaving for a while. Other boats attempted it and one went aground across the channel, thus blocking it for everyone else. After sitting tight for several hours, we decided to give it a try. At this point the visibility was

extremely poor and we should have stayed in port. However, we were tiring of Cuttyhunk and eager to reach Block Island. So *Catharsis*, *Jubilation*, *Lady Barbara* (1395), *Reynard* and *Summer Whim* pressed slowly onward trying to keep each other in sight, which was not easy to do. When we all heard a VERY LOUD signal from a commercail vessel, but could not tell the direction of its origin or its route, we were terrified! We quickly turned the boats around and were fortunate to avoid a collision. Later we would learn to set our radios to scan 9 and 13, especially while near commercial traffic lanes.

As we approached Block Island, the fog finally lifted and we could relax once again and enjoy sailing. The itinerary had allowed for one lay day at Block but once we arrived and the weather was beautifully warm and sunny with NO fog, we all agreed to extend our stay. We enjoyed breakfast at the "Oar", rented bikes for a few days, and frequented the town beach. In the evenings we got together for dinner at "Manisses", another very good restaurant in the middle of town, and visited *Lady Barbara* for one of Jack's famous cakes and hospitality. It seems that we never have enough time at Block Island and this was a very special stay before our trip home.

On the morning of July 24th we headed for Cormorant Point. It was a lovely day for both sailing and fishing as a few of us caught bluefish for dinner. Jack had an excessive amount and offered them to everyone off his transom. The following morning we would all leave Cormorant, some via the inland route and others via the ocean to make our way home.

As we headed West, back to the Great South Bay, the reality of the end of the cruise set in. Although we had more fog than we had bargained for, there were still many wonderful and memorable days with family and good friends. After all, isn't that what makes cruising worth the effort!

## **Two Week "As the Wind Blows" Cruise --- July 1 - 14 from the log of Phantom**

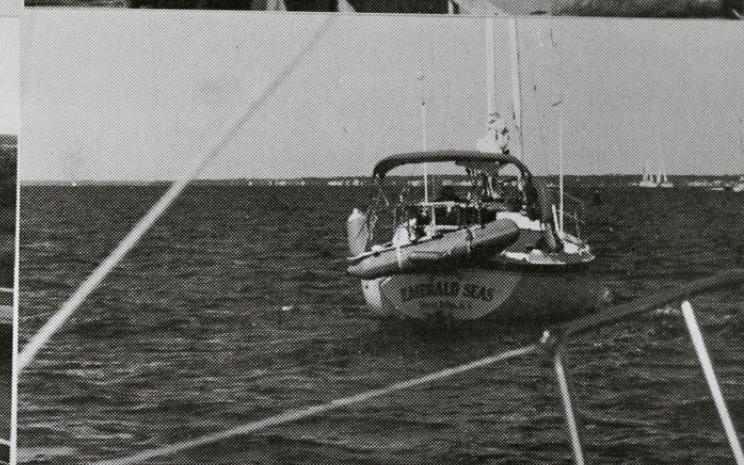
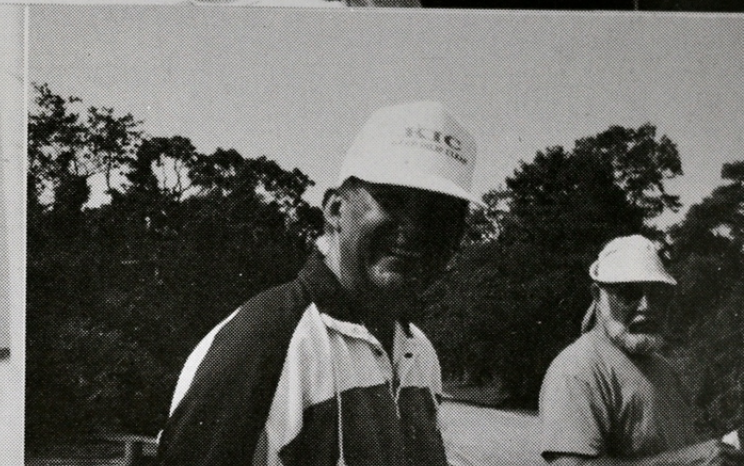
*Saturday - Phantom. Sea Dream and Kitty K* got underway from Great River in moderate fog with *Lady Barbara* (105) joining enroute. Fog closed in and all but *Kitty K* anchored off Buoy 7 rather than run Bellport Reach in no visibility. Made it to Smith Point where visibility again made anchoring a wise choice. Finally got underway again in varying degrees of visibility through Moriches and Shinnecock Bays to join *Jubilation*, *Second Edition*, and *Summer Whim* at Cormorant Point.

*Sunday* - Underway at 0530 to clear Inlet at slack; not as much fog as yesterday. Not much wind either. Uneventful passage outside around Montauk Point. Part of the fleet tied up at Snug Harbor, the rest anchoring in Lake Montauk. All were treated to a fantastic fireworks display.

*Monday* - Slept late. Departed Lake Montauk for Three Mile Harbor with light breeze increasing during a fine sail and no fog. Anchored, went ashore for dinner, had cocktails aboard *Summer Whim* and coffee aboard *Jubilation*.

*Tuesday* - by general consensus, a lay day was declared to enjoy this fine harbor.





*Wednesday* - Departed Three Mile Harbor enroute to Mystic. Some wind at start but dying off. Motored across the Race, where *Catharsis* joined us, and into Mystic River just in time for the 12:15 non-opening of the roadway bridge. Fueled up and proceeded into the Seaport.

*Thursday* - Layday at Mystic. HOT! The library is air-conditioned. Dinner ashore after cocktails aboard *Summer Whim*.

*Friday* - 10:15 bridge opening saw *Phantom*, *Lady Barbara* (105), *Me N' Thee* and *Sea Dream* underway joined by *Fox* and *Lady Barbara* (1395). Had a fine sail to Dering Harbor, arriving at anchor just prior to NW winds and rain.

*Saturday* - went ashore at town dock for fresh croissants and then across to Preston's Dock in Greenport for some sightseeing, shopping, and breakfast. Proceeded to West Neck Harbor under light and gradually building winds. Cocktails aboard *Lady Barbara* (1395).

*Sunday* - Left for Sag Harbor with nice sailing breeze. Tied up at town dock. Enjoyed a delightful birthday dinner ashore.

*Monday* - Departed from cruise for home due to family problem.

I wish to thank all who participated for making the cruise such an enjoyable event.

## **Two Week Cruise -- Where the Wind Blows--July 2nd to July 15th, 1994 From the Log of *Lady Barbara***

The two week cruise started on July 2nd with the three week cruise. The co-captain, *Phantom*, was with them until the *Lady Barbara* met them at Mystic. At the cocktail party aboard *Summer Whim* on July 7th we decided to sail to Greenport the next day.

*July 8th* -- Sunny day, fair wind. *Me'N Thee*, *Lady Barbara* (105), *Kitty K*, *Sea Dream*, *Fox*, *Phantom* and *Lady Barbara* sailed through Plum Gut but the forecast was for bad weather so we all went to Dering Harbor except *Lady Barbara* and *Kitty K*. Then *Kitty K* went to Dering Harbor leaving us all alone by the jetty. We all agreed to go to West Neck the next day.

*July 9th* -- Somehow half of the boats went to Coecles Harbor, the other half went to West Neck. We had a very nice cocktail party on *Sea Dream* (nice people).

*July 10th* -- Off to Sag Harbor. Beautiful wind, the whole fleet is together again. Now comes the best part of the cruise. We all went to dinner at "El Cappucino", very good food! We had a great time and a beautiful birthday cake was brought out to Bruce (*Kitty K*).

*July 11th* -- Early shopping in town. Shoved off around 9:30. Ted Arnold received news that his mother broke her hip and he sailed for home. The group is off to Lake Montauk. Very nice day but little wind. The *Lady Barbara* entered Lake Montauk at 7:00 PM, four hours after the others. I refused to turn the engine on but finally I gave in. **(The remainder of the two week cruise comes from the log of *Sea Dream*)**

Since Ted Arnold (*Phantom*) was scheduled to be cruise captain for the return trip to Great South Bay and he had terminated his cruise at Sag Harbor due to family emergency, *Sea Dream* inherited the assignment. From Lake Montauk the group sailed to Block Island.

July 14th -- *Sea Dream* departed Block Island at 0500. *Lady Barbara* (J. Levitsky) and *Me'N Thee* followed about two hours later. We had a great sail with northeast wind at about 15-20 knots. We reached Shinnecock at 1300 and elected to anchor in the lee in Tiana Bay since Cormorant Point was very uncomfortable. *Lady Barbara* and *Me'N Thee* joined us about an hour later. Cocktails and a London Broil dinner followed.

July 15th -- Underway at 0900 for an uneventful motor sail home. We started the cruise in heavy fog and ended in a light rain.

### **One Week Bay Cruise --- August 14-19** ***from the log of Second Edition***

Sunday—The one-week cruise got off with a bang today...of thunder. After a wonderful day in Great River following the Champagne Breakfast, it was planned for the fleet to leave the river and sail to Atlantique. The fun in the sun was spoiled by thunder, lightning, and rain, accompanied by tornado warnings. The Snapper Inn and Oakdale Yachts offered slips to those SBCC boats who were anchored in the river. We brought *Second Edition* to the Shapper Inn and were joined by *Papillon*, *Kariana*, *Silhouette*, and *Saga II* while others stayed on the hook in the river. *Lady Barbara* (1395) was bold and braved the storm to stick to the itinerary while *Our Time*, *Leprechaun*, *Saltheart*, *Carefree*, *Virgo*, and *Judi Ann* were already snug in a slip at Atlantique.

Those of us on the dock had a very pleasant meal at the Snapper while we watched the wind try to blow all the water out of the river.

Monday—Leaving Great River at 0930, the All Female-Captained Cruise got underway. We had a nice sail to Atlantique while *Char-Lyn*, *Jean's Starr*, *Counterpoint*, *Oh Baby!*, *Kittiwake* (Olsen), and *Me N'Thee* went out to Watch Hill. During the course of a somewhat cloudy day, we were joined by *Lagniappe*, *Sugan N'Spice*, *Fox*, *Sea Dream*, *Broadbill*, *Karma*, *Perry*, *Jubilation*, *Aeolus*, and *Runaway Too*. It was wonderful to see Mitch and Shirley Silbert as guest aboard *Virgo*.

We had an enjoyable cocktail party at the picnic area at 1630 where Brian Flett brought some of the clams he'd caught that day. Brian is very good at this clamming business, having brought up over 200 clams with his feet!

Afterwards, some of us walked to Ocean Beach for dinner and ice cream. Tuesday's weather is predicted to be the best of the week with rain on Wednesday and, after a show of hands where the ladies allowed the men to have a say in the plans as long as they were quiet about it (the cruise **IS** in the charge of all women, after all), we all decided to stay here an extra day to enjoy the beach.

Tuesday - Today was a beautiful beach day. Most of us spent the entire day at the beach while some cruisers chose to walk down to Fair Harbor and still others really exercised their legs and went to the lighthouse. And we had our share of excitement.....

Tony Jones let his son and a friend sail the *Holder* with the admonition to stay close to the marina and **not** cross the channel to explore East Fire Island which is exactly what they did. Tony and Jack Nielsen went out in Jack's dinghy to get them and, next thing, the two "big kids" were missing as well. We could all see the *Holder* nicely beached on East Fire Island and knew that some major exploration was going on out there.

Jack was the hero again later on when Jimmy Warsaw and his friend went out seining a little too far. Jimmy's father, Merritt, called the Coast Guard while Jack jumped in his dinghy and brought the kids safely back to shore.

Marilyn Davis took off for home to drop off her grandson and pick up some friends, returning later in the afternoon.

All had a lovely evening barbequeing and talking the night away and wondering what Tropical Storm Beryl would bring us, if anything, in the way of weather. We all agreed to wait until morning to decide whether or not to continue on to Sailor's Haven.

Wednesday - We woke up to a horribly dismal day and all decided that it was wise to stay put since slips at Atlantique are less costly than at the national parks and there is more to do on shore here. The weather reports are not good for the rest of the week since Beryl is doing her huffing and puffing down in Georgia and Tropical Storm Chris has just become an official hurricane down in the Caribbean with a proposed track northward. Some skippers have decided they'll be safer at home and have departed for their respective docks while other cruisers decided that being on the boat in any weather is better than being at home answering phones, doing laundry, and paying bills, Hey, isn't that what cruising is all about?

Later in the afternoon, before the raindrops started, Marilyn Davis organized a dinghy race and out-performed herself, winning a certificate and a bottle of champagne for coming in first.

Arielle had to go back to work and she and her friend took the last ferry over to Bay Shore while my best friend arrived on the last ferry to Atlantique to take up the slack of my crew jumping ship. So once again, the cruise is being captained by all women. Guys, look out! this could become a habit.

*Char-Lyn* and *Kittiwake* cruised into Atlantique from Watch Hill and joined up with us and, yet again, we met in the evening at the picnic area to listen to NOAA for the latest reports on Chris and to present Marilyn with her well-deserved award.

Thursday - We awoke to a rather nice, if not blustery, day and more boats have elected to sail home in light of the very if-fy weather reports. *Lady Barbara* (1395) departed for Watch Hill to meet up with the mid-week rendezvous which was just beginning. Once again, Marilyn Davis boarded *Fox* and sailed her friends back to West Babylon and THEN turned around and made the trip out to Watch Hill. This lady is SOME sailor! Charlie Parker and I seem to have caught the dreaded summer cold and sniffed and coughed greetings to each other each time we passed on the dock. At one point we took an inventory of what cold remedies we each had in case the other needed something. Since I felt like Hurricane Chris was going on inside my head and Marilyn had things well in hand over at Watch Hill, along with the rendezvous there, my friend and I elected to remain in Atlantique.

Thanks to everyone who made this rainy, stay-in-one-port cruise a wonderful week!

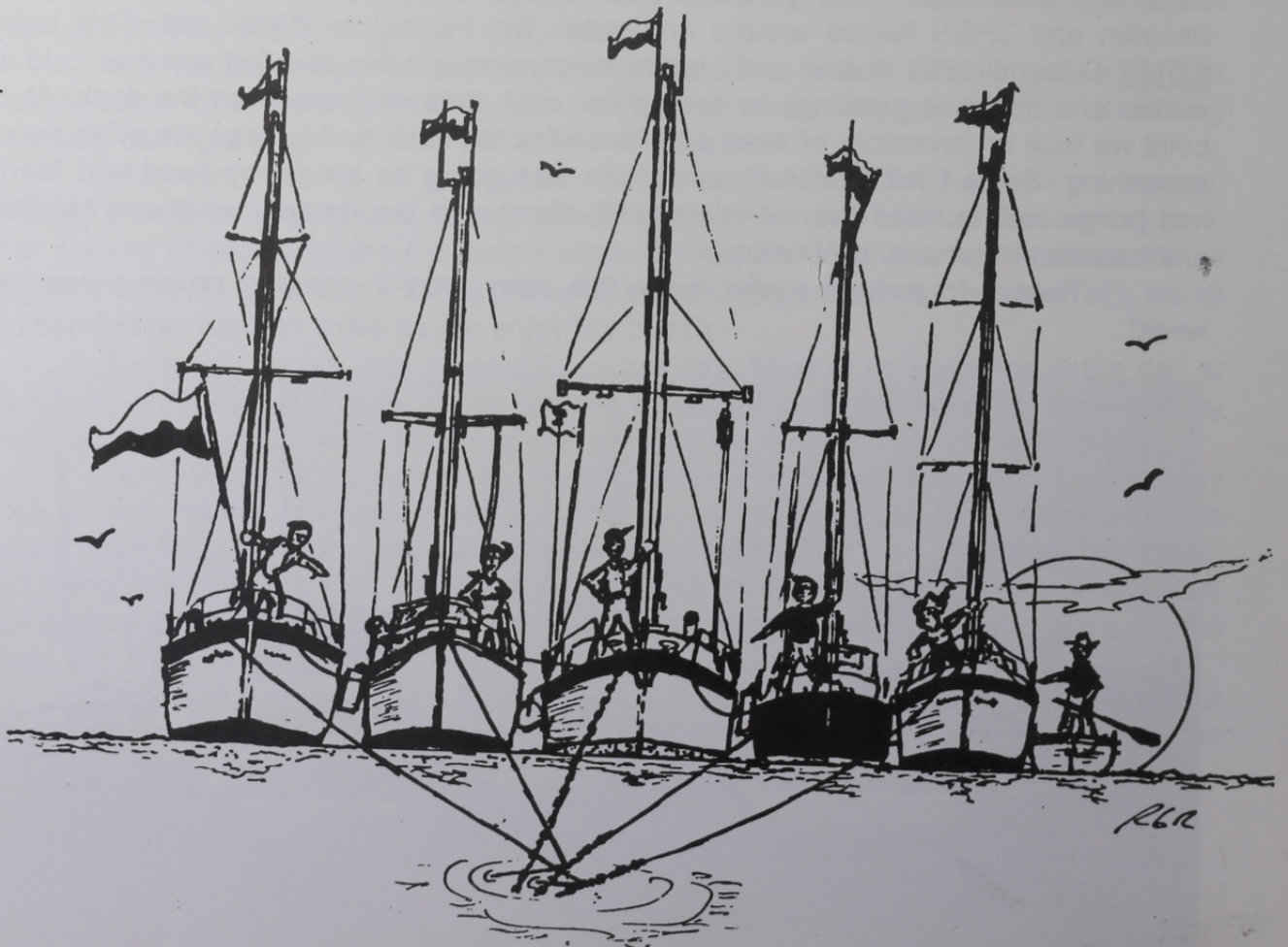


# S.B.C.C. SHIP'S STORE

The storekeeper has the following items available to members at the prices indicated. If you wish to make a purchase, the storekeeper, Barbara Peter, can be reached at 589-3466.

Burgee.....	\$12.00
Coffee Mug.....	4.50
Cruising Guide.....	3.00
Decal.....	1.00
Golf Shirt.....	16.00
Hat.....	6.00
Huggies (for beer or soda can).....	3.00
Necktie.....	8.00
Plates.....	5.00
Racing Pennants.....	1.00
Sweatshirt.....	18.00
Windbreaker.....	15.00

(prices are subject to change according to suppliers' prices)





## SOUTH BAY CRUISING CLUB FLEET

Sail#	Yacht	Owner	Rig	HCP	LOA	Dr	Model
1	Doxie	D. Max	Trawler				Monk
6	Sparrow	E. Miller	Sloop	210	25'	3' 9	C&C
9	Betty	W. Menger	Cat	280	19'	1'10	Menger
10	Teezim Too	F. Zimmerman	Ketch		32'	3' 5	Dickerson
11	Merri Mac	B. MacGill	Yawl		32'	3' 6	Endeavor
13	Moonstruck	B. Camp	Sloop	234	26'11	2'11	O'Day
19	Summerwind	A. Brant	Sloop	186	34'	3' 3	Morgan
20	Restless	P. Daytz	Sloop		35'	3' 9	Pearson
21	Time To	F. White	Cat		33'	4' 4	Nonsuch
23	Mañana	F. Holwell	Sloop		35'	3' 9	Pearson
23	Ada Joe II	J. Malat	Sloop		23'	1' 0	Kells
24	Black Petrel	R. Ramsdell	Cutter		31'	3' 4	Irwin
29	Kittiwake	J. Berquist	Sloop	186	31' 1	"3' 6	Bristol
32	Sunchaser	J. Schnell	Sloop		32'	1' 6	Southerly
34	A Yacht of Patience	R. Kohler	Sloop		34'	4' 3	Hunter
35	Sea Jay	J. Wragge	Sloop	221	27'	3' 4	Tartan
37	De Ja Vu	P. Revella	Sloop		31'	3'11	Pearson
38	Swahili	G. Graham	Sloop	144	33' 4	4' 6	Hunter
39	Emerald Seas	F. Cornman	Sloop	170	31'	4'	Tanzer
41	Serenade	C. Avalos	Ketch		41'	4' 6	Irwin
43	Nereid	J. Tuffin	Sloop	260	25'	3' 5	Cape Dory
44	Liberty	R. Starkie	Sloop		26' 7	3' 3	Tanzer
45	Skylark	W. Thayer	Ketch		40'	3'	Motor Sailer
46	Wind Star	L. Novak	Sloop	176	33'	4'	Irwin
48	Fiona	E. Forsyth	Cutter		42'	6'	Westsail
57	Stardust	J. Ferguson	Sloop	176	30'	3' 4	Tartan
58	Hettie belle	R. Garben	Cat		18'3	2'	Herreshoff
59	Snowgoose	R. Garben	Yawl		35'	3'10	AlliedSeabrz
62	Slim	J. Hamstra	Sloop	221	27'	3' 4	Tartan
62	Slim	P. Rendich	Sloop	221	27'	3' 4	Tartan
67	Tuono	P. Ljungqvist	Sloop	228	27' 2	2'11	O'Day
68	Judi Ann	B. Flett	Sloop		30'	3' 6	Wanderer
73	Antigua	F. Gauch	Ketch		33'	3'	H. G. Smith
77	Charisma	Rev. R. Parker	Sloop		32'	3' 6	Bristol
78	Buccaneer	A. Pearson	Sloop	160	35'	4' 8	Morgan
86	Yankee Doodle	H. Post	Sloop		25'	3'	Bayfield
87	Estelle	Dr. A. Peters	Sloop	132	41' 1	4' 6	Bristol
88	Mystique	J. Rettaliata	Sloop	152	35' 5	3' 9	Bristol
89	Patty Wagon	D. Wood	Sloop		31'	3' 3	Irwin
90	Mouette	A. Reinhard	Sloop		33'	3' 5	Swiftsure
92	Pato Loco	P. Lightstone	Sloop		37' 6	4' 9	Hunter
93	What Me Worry?	J. Ryan	Sloop	183	22'	4'	J-22
96	Kitty K.	W. Kleisler	Sloop		25'	2'	MacGregor
99	Reynard	F. Peter	Sloop	202	30'	3' 6	Wanderer

Sail	Yacht	Owner	Rig	HCP	LOA	Dr.	Model
100	Jubilation	E. Petroske	Sloop	120	40'	5'	Hunter
101	Warlock VI	S. DeLise	Sloop	182	27'	4'10	C&C
102	Last Fling	Dr T Hangarter	Sloop	230	28'	2' 2	Kelt
103	Presto	F. Hettinger	Sloop		22'	2'	Catalina
105	Lady Barbara	J. Levitsky	Cutter		30"	2'8	IslandPacket
110	First Light	L. Lowy	Sloop		30'	4'	Newport
111	Me'N Thee	R. Rouse	Sloop	183	34'7	4'	Irwin
114	Obsession	G. Schwarting	Sloop	171	25'	4'	Capri
115	Wanderlust	R. Holzmacher	Yawl		45'	4'6	Custom
116	Susy-Q	M. Schoenwald	Sloop		22'	4'	J-22
118	Saga II	R. Rothaug	Sloop	207	26'7	4'6	AMF Paceship
119	Blue Heron	T. Nehring	Sloop	228	24' 9	2' 9	Morgan
120	Lorna Doone	R Van Nostrand	Sloop	192	33'	3'	S&S
122	Sea Witch	R. Ernst	Schnr	228	32'	2'10	Hermman
125	Vi	A. Yaxis	Ketch	235	28'	3'5	H-28
127	Bat Yam IV	I Tannenbaum	Sloop		33'	4'	Pearson
130	Shangri-La	J. Sicinski	Sloop		40'	5'	Endeavor
136	HMS Bel Ami	P. Jiminez	Sloop		28'	3'	Morgan
144	Njord	W. Eilbeck	Sloop	130	37'	4'3	Tartan
146	Second Edition	T/B Poulos	Sloop		29'9	4'	Watkins
150	Fox	M. Davis	Sloop	202	30'	3'8	Wanderer
151	Good Wind	H. Goodwin	Sloop		31'1	3'6	Bristol
153	Adrienne	J. Kelly	Sloop		30'3	3'6	Pearson
165	Mallard II	E. Kennelly	Sloop		32'	3'5	Fales
166	Papillon	J. Hallam	Sloop	192	30'	4'	Laguna
168	Jolly Jack	Dr. J. Hollis	Sloop	302	26'	3'	Snapdragon
170	Second Wind	W. Thomas	Sloop	208	28'	2'11	Soveral
172	Windependent II	W. Gogots	Sloop		31'	3'	Island Packet
176	Resistance	R. Dunlop	Sloop	193	30'	3'6	Wanderer
185	Aerie	J. Grover	Sloop	176	28'	3'11	Tartan
188	Spray Maker II	H. Rapps	Sloop	170	30'	3'4	Tartan
191	Perry	C. Vermaelen	Sloop		33'	3'5	Swiftsure
192	Nova	R. Canino	Sloop		26'	2'6	Thames
199	Kristi Kim	M. Hoffman	Sloop	192	30'	4'	Laguna
200	Magic	R. Sheppard	Sloop	178	33'	4'	Pearson
212	Puffin	J. Sachnoff	Sloop	230	25'4	1'9	Irwin 10/4
215	Vera	Dr. M Gorin	Sloop		26'	3'6	Grampian
220	Merry Ann	W. Cook	Sloop	175	30'	4'	C&C
222	Wraith	A/B Johnson	Sloop	186	34'	3'3	Morgan
225	Moondance	T. Penn	Sloop	210	25'	4'3	C&C
231	Tomorrow's Dream	C. Shyngle	Sloop		25'	2'6	O'Day
235	Clever Scheme Too	T Maltman	Sloop	192	28'4	4'	Beneteau
241	Wink	R. Woodhull	Sloop		18'	2'2	Cape Dory
242	Falcon	A. Heckel	Sloop	150	35'5	3'9	Bristol
253	Family Affair	H. Manko	Sloop		28'6	3'10	Catalina
254	Pzaz	J. Schlitt	Sloop		30'	3'6	O'Day

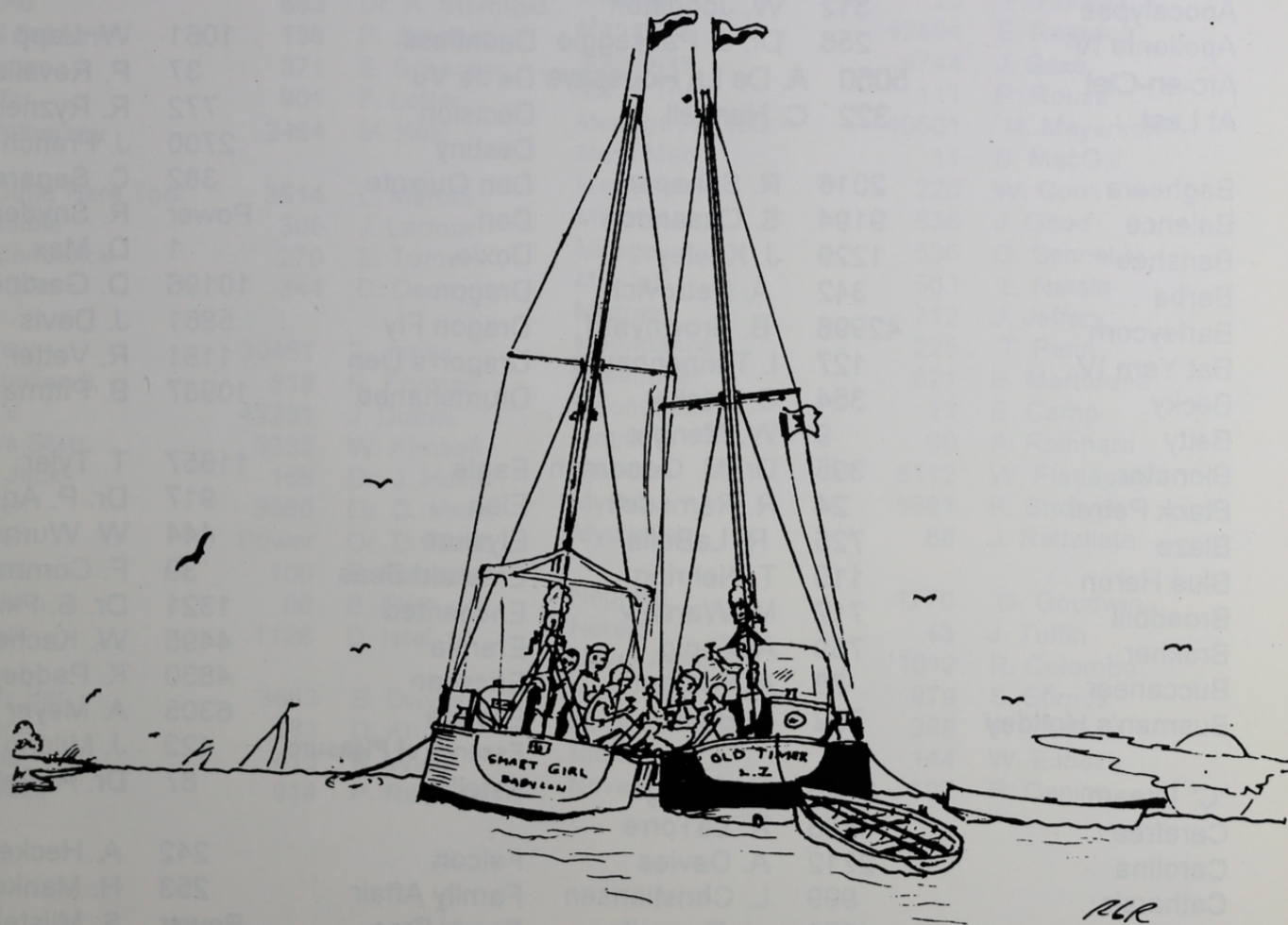
Sail	Yacht	Owner	Rig	HCP	LOA	Model	
256	Apollonia IV	Dr J Passeggio	Schnr		32'	3'	Brewer/Herm
260	Pursuant	M. Brous	Sloop	176	35'	3'9	Pearson
263	Constellation	Dr. J. Bogan	Cutter	234	30'	3'8	Island Packet
270	Independence	E. Turner	Sloop	221	27'	3'4	Tartan
277	Adria	R. Saganic	Sloop	221	27'	3'4	Tartan
283	Kariana	D. Krug	Sloop	171	34'	4'	Irwin
297	Aeolus	D. Graham	Sloop	200	30'	3'6	Wanderer
298	Raclette	R. Hollis	Ketch	200	36'5	4'5	Pearson
299	Nevermore II	W. Ludlum	Sloop	216	24'7	3'	Mark 25
302	Our Time	T. Chambers	Sloop		34'	3'11	Tartan
305	Incredible	J. Larmor	Sloop	220	30'	2'4	BombayXpress
308	Cu Mara	L. Schaefer	Sloop		33'	4'5	Endeavor
312	Apocalypse	W. Johnston	Sloop		27'	3'4	Watkins
318	Windquest	C. Margeson	Sloop	186	34'	3'3	Morgan
320	Glas Menagerie	B. Kennedy	Sloop	196	31'	3'3	Corvete
322	At Last	C. Hartzell	Sloop		27'1	4'	Cape Dory
330	Seamus-K	J. Keeley	Sloop	158	34'	3'10	Catalina
335	Colleen	B. Horn	Sloop		27'	1'7	Irwin
342	Barba	A. Petrovich	Sloop		24'	3'3	PacificSeacraft
344	Irish Clan	D. Dean	Sloop	202	27'	4'3	C&C
345	Char-Lynn	C. Parker	Sloop	149	34'5	4'3	Hunter
346	Sunriser	H. Smith	Sloop	242	22'5	2'	Tanzer
354	Becky	C. Becker	Sloop		30'	3'6	O'Day
360	Wild Blue II	A. Mulle	Ketch	238	30'	4'	Allied
371	Horizon	E. Schecker	Yawl	188	35'	3'9	Bristol
382	Don Quixote	C. Sagarese	Sloop		28'	4'	Newport
395	Bionator	Dr M Goodman	Sloop	179	29'	3'3	C&C
407	Annie B	W. Wheeler	Sloop	227	24'	4'	C&C
413	Karma	R. Wiehl	Sloop	176	35'	3'9	Pearson
414	Tattoo	Dr J McMahan	Sloop	124	37'	4'3	Tartan
418	Roundtrip III	D. Browne	Sloop		25'9	2'7	Seafarer
421	Amethyst	D. Davies	Sloop	123	27'	4'9	J-27
422	Essence of Pleasure	J. Milano	Sloop	183	29'	4'	Tanzer
423	Sea Dream	W. Dunleavy	Sloop		28'	4'2	Newport
428	Ariel	C. Giacomazzo	Sloop		27'	3'3	Hunter
432	Solitude	C. Schaffer	Sloop	170	30'	4'	Irwin
433	Lapaix II	D. Boyd	Ketch		33'	3'7	Cheoy Lee
440	Perfect Pitch	B. Griffiths	Sloop		25'3	2'11	Tanzer
442	Wild Thyme	B. Spivack	Sloop	221	27'	3'4	Tartan
443	Whisper	R. Sherwood	Sloop		29'9	3'4	Bristol
444	Elysium	W. Wurm	Cutter		32'	4'4	IslandPacket
482	Coppelia	J. Steinert	Sloop		30'	4'	Newport
503	Mis-Jef	L. Natale	Sloop	198	27'6	4'4	Mirage
509	Sugar'N Spice	T. Drossos	Sloop	228	25'	2'8	US Yacht
524	Stardust	M. Gargiulo	Sloop	198	27'6	3'6	Mirage
536	Mirage	G. Schneller	Sloop	210	26'	4'	Pearson
545	Chubby Cheeks	B. Terry	Sloop	207	28'3	3'8	O'Day

Sail	Yacht	Owner	Rig	HCP	LOA	Dr	Model
559	Yanqui	D. Johnson	Sloop	210	26'2	4'	Pearson
578	Clepsydra	M. Van Zanten	Sloop		25'	3'	Kelt
615	Spirit	W. Titus	Sloop	250	26'	3'10	Bristol
621	Moonraker	B. Martorana	Sloop		35'5	3'9	Bristol
625	H.S. Kathleen L	J. Layton	Ketch		44'	4'8	Brewer
629	Witch Craft	R. Pettit	Sloop		22'	2'	Hunter
636	Miracle	J. Good	Cutter		32'	3'9	Bayfield
641	Laurie Jean	G. Messina	Sloop		30'	3'10	Catalina
664	Patricia Ann	R. Wills	Cat		18'	1'10	Herreschoff
668	Sanderling	R. Nehring	Sloop		33'	3'6	Swiftsure
669	Kittiwake	R. Olsen	Cutter		37'	4'	Hunter
675	Shoot'n the Breeze	R. Czach	Sloop	180	35'	4'	Halberg Rassy
687	Summer Whim	R. Sanalidro	Sloop	168	35'	4'3	S-2
705	Zepher	A. Feldman	Sloop	195	29'9	3'6	Bristol
712	Mistress	J. Jeffers	Sloop		27'	3'3	Hunter
715	Runaway Too	P. Schulz	Sloop	245	24'	2'	Seafarer
717	Broadbill	M. Warsaw	Sloop		30'	3'6	Wanderer
725	Blaze	R. LaBella	Sloop	175	30'	4'4	C&C
732	Busman's Holiday	S. Brice	Sloop	120	40'	4'11	O'Day
742	Friendly Persuasion	T. Schwarting	Sloop	185	30'	4'	Newport
759	Brokher	A. Eppig	Sloop	210	25'	4'	C&C
772	Decision	R. Ryzner	Sloop	181	30'	4'3	Hunter
776	Tachyon	D. Cameron	Sloop	191	29'9	3'6	Bristol
777	Oh Baby	V. Cognato	Sloop		27'	3'	O'Day
818	Jacqueline II	R. Forman	Sloop	145	38'	3'8	Morgan
822	Sunshine	V. Kind	Sloop	210	25'	3'8	C&C
870	Alone At Last	P. Halpin	Sloop		34'	3'10	Catalina
879	Never Say Never	S. Etimos	Sloop	192	27'	3'4	Pearson
883	Hey Ad	Dr A Sternfeld	Sloop		30'	4'	Hunter
888	Outlaw James Gang	A. James	Sloop	159	32'2	4'2	O'Day
901	Hot Tar	F. Lotter	Sloop		28'	4'4	Albin
914	Kittiwake	P. Rettaliata	Sloop	210	26'	4'	Pearson
917	Elan	Dr P Aries	Sloop	144	37'	4'6	Beneteau
934	White Squall	H. Smith	Sloop	260	23'	3'	Ensign
939	Commodorable	H. Kreisberg	Sloop	153	32'6	4'6	Beneteau
999	Catharsis	L Christiansen	Sloop	187	30'	4'	Irwin
1012	Never Again II	R. Colombo	Sloop	120	40'	5'5	Hunter
1015	Sleepy Head	Dr. J. Epstein	Sloop	180	29'11	5'	Islander
1021	Christic	J. Wallace	Sloop	210	26'	4'	Pearson
1061	Dauntless	W. Lapp	Sloop	262	26'	2'4	Polaris
1085	Wandelaar	Dr J Schwartz	Ketch	168	42'4	5'3	Pearson
1090	Courtesan	J. Young	Yawl		42'5	5'	C&C
1101	Wild Goose	J. Glynn	Sloop		34'	3'6	Morgan
1121	Ailanthus	W. Grauer	Sloop	210	26'	4'	Pearson
1128	Juniper	D. Istel	Sloop		35'	3'8	Pearson
1133	Antares II	R. Coleman	Sloop	179	31'	3'11	Pearson
1142	Lion Hearted	A. Lovito	Sloop	150	34'	4'3	Catalina

Sail#	Yacht	Owner	Rig	HCP	LOA	Dr	Model
1144	Voodoo Lady	E. Sowden	Sloop		27'	4'5	Hunter
1161	Leprechaun	D. Connor	Sloop	198	30'	3'6	Wanderer
1181	Dragon's Den	R. Vetter	Sloop		34'4		Island Packet
1185	Anjin	W. Burke	Sloop	198	29'9	3'9	Bristol
1204	Counterpoint	J. Becker	Sloop	180	30'5	4'4	Pearson
1220	Voyager	M. Fishman	Sloop		35'5	4'	Bristol
1227	Roguary	M. O'Connell	Sloop	221	27'	3'3	Tartan
1229	Banshee	J. Keeley	Sloop	171	24'	4'	J-24
1260	Silhouette	T. Gotard	Sloop	193	33'	3'5	Swiftsure
1321	Enchanted	Dr. S Fili	Sloop		30'	3'8	Island Packet
1395	Lady Barbara	J. Nielsen	Ketch	180	37'	4'6	Endeavor
1442	Ranger	R. Malinka	Sloop		25'	3'6	Cape Dory
1457	Firewater II	G. Baldwin	Sloop	210	25'	4'6	C&C
1457	Firewater II	D. Crocker	Sloop	210	25'	4'6	C&C
1518	True Love?	L. Becker	Sloop	258	22'	1'8	O'Day
1661	Mystic	K. Strange	Sloop		24'2		Sparkman
1682	Windfall 1	Dr C Soranno	Sloop		26'2	4'	Pearson
1699	Patience	B. Rottkamp	Sloop		22'	1'8	Catalina
1712	Summer Breeze	M. Hanrahan	Sloop		28'	3'	Irwin
1714	Wind Call	E. Dew	Sloop		34'3	4'	Irwin
1770	Nephele	G. Goodwin	Sloop		30'	3'6	Wanderer
1855	Carefree	R. LaTorre	Yawl	190	35'	3'9	Allied
1858	Fenian	E. Simmons	Sloop		29'9	3'6	Bristol
1983	Quicksilver	J. Monteil	Sloop		24'4	3'6	Seaward24
1991	Peter Pam	P. Murphy	Sloop		22'6	3'5	Tanzer
2016	Bagheera	R. Schaper	Sloop	164	40'	4'	Bristol
2020	Golden Days	E. Kissenberth	M/S		30'	3'11	Cape Dory
2215	Pilgrim Wind	M. Farrell	Sloop		22'	17"	Helsen
2404	Yellowbird	M. Smith	Sloop	130	40'	4'9	Crusader
2484	Hydrotherapy	M. Kohl	Sloop	142	39'	4'8	Pearson
2641	Seanachie	J. Leddy	Sloop	180	30'	3'6	O'Day
2700	Destiny	J. French	Yawl		35'	4'	Seabreeze
2712	Carolina	A. Davies	Sloop	200	30'	3'6	Wanderer
2801	Phantom	T. Arnold	Sloop		25'	2'6	O'Day
2808	Gliding Gull	D. Van Nostrand	Sloop	196	31'	3'3	C&C
3221	Gin Ne Sai Quoi	G. Greenblatt	Sloop		32'	4'3	O'Day
3301	Quest	R. Cresci	Sloop	215	33'	4'	Morgan
3333	Jean's Starr	W. Kimbell	Sloop	179	30'7	4'	Tanzer
3514	I'm Outta Here Too!	L. Marotti	Sloop	189	29'11	4'4	Catalina
3663	Kandy Bar	B. Dwyer	Sloop		31'6	3'3	Corvette
3807	Fantasea	Dr G Dennison	Cutter		38'	3'	Krogen
3829	Freyja	P. Tooker	Sloop		38'5		Alden
3860	Joyden	Dr D Maud	Cutter		38'	3'	Krogen
4201	Soverain	J. Mattera	Sloop		32'	3'6	Bristol
4230	Virgo	W. Raskin	Sloop		31'	4'	Island Packet
4271	Chanson	J. Dunnells	Sloop	194	29'11	3'6	Morgan

Sail#	Yacht	Owner	Rig	HCP	LOA	Dr	Model
4382	Yesterday's Dream	W. Fritz	Sloop		27'	3'6	Tartan
4430	Serene Irene	L. Kohl	Sloop		28'	3'	Irwin
4463	Salthart	J. McCormack	Sloop	200	27'	4'	Catalina
4495	Eramia	W. Kachel	Sloop	186	32'	3'5	Irwin
4744	Mandalay	J. Saxe	Sloop	196	30'	3'6	Wanderer
4830	Ericsean	K. Padden	Sloop	198	30'		Ericson
5050	Arc-En-Ciel	A. DeLa Houssaye	Sloop	234	27'	3'3	Hunter
5112	Mweedn	W. Flanagan	Sloop		29'	4'3	Contest
5657	Piñata	B. Jacobs	Sloop		26'10	4'	Catalina
5861	Dragon Fly	J. Davis	Sloop	210	25'	4'3	C&C
6217	Lady Ann	R. Mourino	Sloop	215	27'	3'5	Catalina
6305	Escape	A. Meyer	Sloop		27'	3'5	Catalina
6744	Lucky Bark III	T. O'Connell	Sloop	210	25'	4'	C&C
7017	Orion	R. Ryan	Sloop		27'	3'3	Hunter
7700	Absolut	S. Penny	Sloop	168	25'11	5'	S-2
8987	Phase II	D. Pearsall	Sloop	149	34'5	4'3	Hunter
9194	Balance	S. Ossandon	Sloop		29'5	4'	Hunter
9272	Phantasm	D. Cashton	Sloop	230	28'2	2'3	Kelt
10196	Dragon	D. Gardner	Sloop		3'5	3'9	Pearson
10207	Tranquilizer	R. Daytz	Sloop	149	38'	3'8	Morgan
10987	Drumshanbo	B. Pittman	Sloop	155	35'	4'11	Erickson
11111	Sugar & Spice	L. D'Aquila	Sloop		30'	4'	Newport
11588	Thunder Cloud	J. Classen	Sloop	196	27'	4'6	C&C
11657	Eagle	T. Tyler	Sloop		29'9	3'6	Bristol
13258		A. Goodman	Cat				Lazer
14423	Cherry Pi	F. Marinaccio	Sloop	210	25'	3'10	C&C
20774	Windshadow	L. Costelloe	Sloop	132	34'7	5'3	Pearson
21674	Solitude	H. Warner	Yawl	179	35'	3'9	Pearson
22643	Like, Wow!	W. Brooks	Sloop	174	25'2	4'2	Kirby
24191	Quest	R. Van Tassel	Sloop	118	42'9	4'8	Tartan
30461	J. Crew	T Jones	Sloop	171	25'2	4'2	Capri 25
30661	Magic Dragon	R. Freedman	Sloop	109	39'7	4'9	C&C
31950	Outlaw	E. Brooks	Sloop		36'		Morgan
33531	Cherie	R. Healy	Sloop		33'	4'	Hunter
33978	Sigrid	J. Pallotta	Sloop	124	37'	4'3	Tartan
40601	Menage A'Trois	M. Meyerson	Sloop	210	24'6	4'3	Mark 25
40999	Weed	Dr R Schwartz	Sloop	135	27'	4'11	Tartan
42281	Jam V	J. Dudek	Sloop	135	35'5	4'6	HunterLegend
42295	Forever In Debt	R. McLaren	Sloop	259	23'	2'3	O'Day
42370	Silver Bullett	J. Reichel	Sloop	123	27'6	4'11	J-27
42370	Silver Bullet	B. Kennedy	Sloop	123	27'6	4'11	J-27
42655	Current Affair	M. Schairer	Sloop	180	30'	3'11	O'Day
42894	Manatuck	E. Reardon	Yawl	190	35'	3'10	Allied Seabrze
42998	Barleycorn	B. Brownyard	Sloop	76	35'	6'11	Schock
43833	Ravin'	Dr. G. Bottino	Sloop		33'	5'6	Tripp
71044	Lilly Pad	J. Lilly	Sloop	141	35'5	4'	Hunter
ower	Alibi	A. Rising	Power				
ower	Annette Too	A. Eppig	Crusr		36'	3'6	ChrisCraft

Sail#	Yacht	Owner	Rig	HCP	LOA	Dr	Model
Power	Compass Rose	J. Leddy	Trawl		43'	4'	Albin
Power	Dori	R. Snyder	Power				
Power	Doxie	D. Max	Trawl		36'	4'	Monk
Power	Fancy Free	S. Milstein	Power				
Power	Fantasia	E. Schecker			39'5"	3'6"	Albin
Power	Firewood	R. Sheppard	Power				
Power	First Light	R. Stuhler	Power				
Power	Joyden	Dr. D. Maud	Trawl				
Power	Ranger	T. Henry	Trawl		42'	4'4"	Bristol
Power	Salty	B. Brownyard	Power				
Power	Sea Glass	J. Rettaliata	Power				
Power	South Wind	W. Konz	Trawl				
Power	Widgeon	W. Carl	Power				
Power		E. Seidenberg	Power				



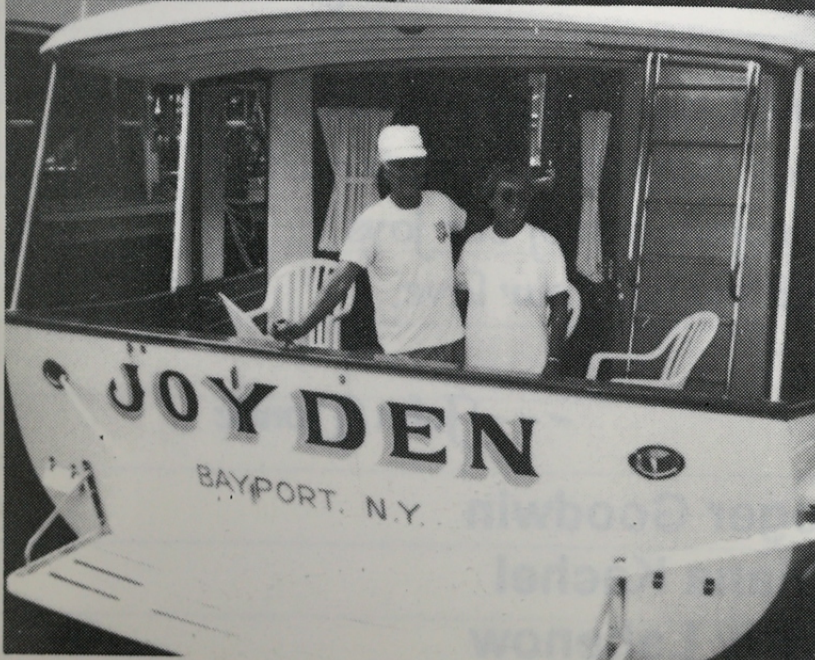
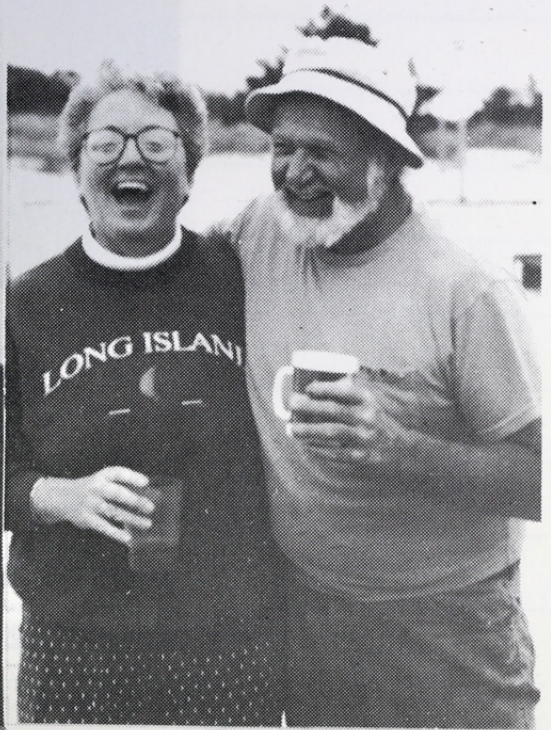
# MEMBER YACHTS ALPHABETICALLY

Yacht	Sail#	Owner	Yacht	Sail#	Owner
A Yacht of Patience	34	R. Kohler	Charisma	77	Rev. R. Parker
Absolut	7700	S. Penny	Cherie	33531	R. Healy
Ada Joe II	23	J. Malat	Cherry Pi	14423	F. Marinaccio
Adria	277	R. Saganic	Christic	1021	J. Wallace
Adrienne	153	J. Kelly	Chubby Cheeks	545	B. Terry
Aeolus	297	D. Graham	Clepsydra	578	M. Van Zanten
Aerie	185	J. Grover	Clever Scheme Too	235	T. Maltman
Ailanthus	1121	W. Grauer	Colleen	335	B. Horn
Alibi	Power	A. Rising	Commodorable	939	H. Kreisberg
Alone At Last	870	P. Halpin	Compass Rose	Power	J. Leddy
Amethyst	421	D. Davies	Constellation	263	Dr. J. Bogan
Anjin	1185	W. Burke	Coppelia	482	J. Steinert
Annette Too	Power	A. Eppig	Counterpoint	1204	J. Becker
AnnieB	407	W. Wheeler	Courtesan	1090	J. Young
Antares II	1133	R. Coleman	Cu Mara	308	L. Schaefer
Antigua	73	F. Gauch	Current Affair	42655	M. Schairer
Apocalypse	312	W. Johnston			
Apollonia IV	256	Dr. J. Passeggio	Dauntless	1061	W. Lapp
Arc-en-Ciel	5050	A. De La Houssaye	De Ja Vu	37	P. Revella
At Last	322	C. Hartzell	Decision	772	R. Ryzner
			Destiny	2700	J. French
Bagheera	2016	R. Schaper	Don Quixote	382	C. Sagarese
Balance	9194	S. Ossandon	Dori	Power	R. Snyder
Banshee	1229	J. Keeley	Doxie	1	D. Max
Barba	342	A. Petrovich	Dragon	10196	D. Gardner
Barleycorn	42998	B. Brownyard	Dragon Fly	5861	J. Davis
Bat Yam IV	127	I. Tannenbaum	Dragon's Den	1181	R. Vetter
Becky	354	C. Becker	Drumshanbo	10987	B. Pittman
Betty	9	W. Menger			
Bionator	395	Dr. M. Goodman	Eagle	11657	T. Tyler
Black Petrel	24	R. Ramsdell	Elan	917	Dr. P. Aries
Blaze	725	R. LaBella	Elysium	444	W. Wurm
Blue Heron	119	T. Nehring	Emerald Seas	39	F. Cornman
Broadbill	717	M. Warsaw	Enchanted	1321	Dr. S. Fili
Brokher	759	A. Eppig	Eramia	4495	W. Kachel
Buccaneer	78	A. Pearson	Ericsean	4830	K. Padden
Busman's Holiday	732	S. Brice	Escape	6305	A. Meyer
			Essence of Pleasure	422	J. Milano
"C" Dream	2046	H. George	Estelle	87	Dr. A. Peters
Carefree	1855	R. LaTorre			
Carolina	2712	A. Davies	Falcon	242	A. Heckel
Catharsis	999	L. Christiansen	Family Affair	253	H. Manko
Chanson	4271	J. Dunnells	Fancy Free	Power	S. Milstein
Char-Lynn	345	C. Parker	Fantasea	3807	Dr. G. Dennison

Yacht	Sail#	Owner	Yacht	Sail#	Owner
Fantasia		E. Schecker	Kittiwake	669	R. Olsen
Fenian	1858	E. Simmons	Kittiwake	29	J. Berquist
Filabuster	12	D. Hyer	Kitty K.	96	W. Kleisler
Fiona	48	E. Forsyth	Kristi Kim	199	M. Hoffman
Firewater II	1457	G. Baldwin			
Firewater II	1457	D. Crocker	Lady Ann	6217	R. Mourino
Firewood	Power	R. Sheppard	Lady Barbara	1395	J. Nielsen
First Light	Power	R. Stuhler	Lady Barbara	105	J. Levitsky
Firstlight	110	L. Lowy	Lapaix II	433	D. Boyd
Forever In Debt	42295	R. McLaren	Last Fling	102	Dr. T. Hangarter
Fox	150	M. Davis	Laurie Jean	641	G. Messina
Freyja	3829	P. Tooker	Leprechaun	1161	D. Connor
Friendly Persuasion	742	T. Schwarting	Liberty	44	R. Starkie
			Like, Wow!	22643	W. Brooks
Gin Ne Sai Quoi	3221	G. Greenblatt	Lion Hearted	1142	A. Lovito
Glas Menagerie	320	B. Kennedy	Lorna Doone	120	R. Van Nostrand
Gliding Gull	2808	D. Van Nostrand	Lucky Bark III	6744	T. O'Connell
Golden Days	2020	E. Kissenberth			
Good Wind	151	H. Goodwin	Magic	200	R. Sheppard
			Magic Dragon	30661	R. Freedman
H.S. Kathleen L	625	J. Layton	Mallard II	165	E. Kennelly
Hettie Belle	58	R. Garben	Mañana	23	F. Holwell
Hey Ad	883	Dr. A. Sternfeld	Manatuck	42894	E. Reardon
HMS Bel Ami	136	P. Jimenez	Mandalay	4744	J. Saxe
Horizons	371	E. Schecker	Me 'N Thee	111	R. Rouse
Hot Tar	901	F. Lotter	Menage A' Trois	40601	M. Meyerson
Hydrotherapy	2484	M. Kohl	Merri Mac	11	B. MacGill
			Merry Ann	220	W. Cook
I'm Outta Here Too!	3514	L. Marotti	Miracle	636	J. Good
Incredible	305	J. Larmor	Mirage	536	G. Schneller
Independence	270	E. Turner	Mis-Jef	503	L. Natale
Irish Clan	344	D. Dean	Mistress	712	J. Jeffers
			Moondance	225	T. Penn
J. Crew	30461	T. Jones	Moonraker	621	B. Martorana
Jacqueline II	818	R. Forman	Moonstruck	13	B. Camp
Jam V	42281	J. Dudek	Mouette	90	A. Reinhard
Jean's Starr	3333	W. Kimbell	Mweedn	5112	W. Flanagan
Jolly Jack	168	Dr. J. Hollis	Mystic	1661	K. Strange
Joyden	3860	Dr. D. Maud	Mystique	88	J. Rettaliata
Joyden	Power	Dr. D. Maud			
Jubilation	100	E. Petroske	Nephele	1770	G. Goodwin
Judi Ann	68	B. Flett	Nereid	43	J. Tuffin
Juniper	1128	D. Istel	Never Again II	1012	R. Colombo
			Never Say Never	879	S. Etimos
Kandy Bar	3663	B. Dwyer	Nevermore II	299	W. Ludlum
Kariana	283	D. Krug	Njord	144	W. Eilbeck
Karma	413	R. Wiehl	Nova	192	R. Canino
Kittiwake	914	P. Rettaliata			

Yacht	Sail#	Owner	Yacht	Sail#	Owner
Obsession	114	G. Schwarting	Second Edition	146	T/B Poulos
Oh Baby	777	V. Cognato	Second Wind	170	W. Thomas
Orion	7017	R. Ryan	Serenade	41	C. Avalos
Our Time	302	T. Chambers	Serene Irene	4430	L. Kohl
Outlaw	31950	E. Brooks	Shangri-La	130	J. Sicinski
Outlaw James Gang	888	A. James	Shoot'n the Breeze	675	R. Czach
Papillon	166	J. Hallam	Sigrid	33978	J. Pallotta
Patience	1699	B. Rottkamp	Silhouette	1260	T. Gotard
Pato Loco	92	P. Lightstone	Silver Bullet	42370	J. Reichel
Patricia Ann	664	R. Wills	Silver Bullet	42370	B. Kennedy
Patty Wagon	89	D. Wood	Skylark	45	W. Thayer
Perfect Pitch	440	B. Griffiths	Sleepy Head	1015	Dr. J. Epstein
Perry	191	C. Vermaelen	Slim	62	P. Rendich
Perseverance	33	R. Merz	Slim	62	J. Hamstra
Peter Pam	1991	P. Murphy	Snowgoose	59	R. Garben
Phantasm	9272	D. Cashton	Solitude	432	C. Schaffer
Phantom	2801	T. Arnold	Solitude	21674	W. Warner
Phase II	8987	D. Pearsall	South Wind	Power	W. Konz
Pilgrim Wind	2215	M. Farrell	Soverain	4201	J. Mattera
Piñata	5657	B. Jacobs	Sparrow	6	E. Miller
Presto	103	F. Hettinger	Spirit	615	W. Titus
Puffin	212	J. Sachnoff	Spray Maker II	188	H. Rapps
Pursuant	260	M. Brous	Stardust	57	J. Ferguson
Pzaz	254	J. Schlitt	Stardust	524	M. Gargiulo
Quest	3301	R. Cresci	Sugar & Spice	11111	L. D'Aquila
Quest	24191	R. Van Tassel	Sugar 'N Spice	509	T. Drossos
Quicksilver	1983	J. Montiel	Summer Breeze	1712	M. Hanrahan
Raclette	298	R. Hollis	Summer Whim	687	R. Sanalitro
Ranger	Power	T. Henry	Summerwind	19	A. Brant
Ranger	1442	R. Malinka	Sunchaser	32	J. Schnell
Raven	50046	Dr. G. Bottino	Sunriser	346	H. Smith
Ravin'	43833	Dr. G. Bottino	Sunshine	822	V. Kind
Resistance	176	R. Dunlop	Susy-Q	116	M. Schoenwald
Restless	20	P. Daytz	Swahili	38	G. Graham
Reynard	99	F. Peter	Tachyon	776	D. Cameron
Roguary	1227	M. O'Connell	Tattoo	414	Dr. J. McMahon
Roundtrip III	418	D. Browne	Teezim Too	10	F. Zimmerman
Runaway Too	715	P. Schulz	The Lilly Pad	71044	J. Lilly
Saga II	118	R. Rothaug	Thunder Cloud	11588	J. Classen
Saltheart	4463	J. McCormack	Time To	21	F. White
Salty	Power	B. Brownyard	Tomorrow's Dream	231	C. Shyngle
Sanderling	668	R. Nehring	Tranquilizer	10207	R. Daytz
Sea Dream	423	W. Dunleavy	True Love ?	1518	L. Becker
Sea Glass	Power	J. Rettaliata	Tuono	67	P. Ljungqvist
Sea Jay	35	J. Wragge	Vera	215	Dr. M. Gorin
Sea Witch	122	R. Ernst	Vi	125	A. Yaxis
Seamus-K	330	J. Keeley	Virgo	4230	W. Raskin
Seanachie	2641	J. Leddy	Voodoo Lady	1144	E. Sowden
			Voyager	1220	M. Fishman

Yacht	Sail#	Owner	Yacht	Sail#	Owner
Wandelaar	1085	Dr. J. Schwartz	Windfall 1	1682	Dr. C. Soranno
Wanderlust	115	R. Holzmacher	Windquest	318	C. Margeson
Warlock VI	101	S. DeLise	Windshadow	20774	L. Costelloe
Weed	40999	Dr. R. Schwartz	Wink	241	R. Woodhull
What Me Worry?	93	J. Ryan	Witch Craft	629	R. Pettit
Whisper	443	R. Sherwood	Wraith	222	A/B Johnson
White Squall	934	M. Smith			
Widgeon	Power	W. Carl	Yankee Doodle	86	H. Post
Wild Blue II	360	A. Mulle	Yanqui	559	D. Johnson
Wild Goose	1101	J. Glynn	Yellowbird	2404	M. Smith
Wilde Thyme	442	B. Spivack	Yesterdays Dream	4382	W. Fritz
Wind Call	1714	E. Dew			
Wind Star	46	L. Novak	Zepher	705	A. Feldman
Windependent II	172	W. Gogots			





## IN MEMORIAM

*As virtuous men pass mildly away,  
And whisper to their souls, to go,  
Whilst some of their sad friends do say,  
The breath goes now, and some say, no:*

*So let us melt, and make no noise,  
No tear-floods, nor sigh-tempests move,  
Twere profanation of our joys  
To tell the laity our love.*

*--- John Donne*

**Roger Goodwin**

**Diana Keckel**