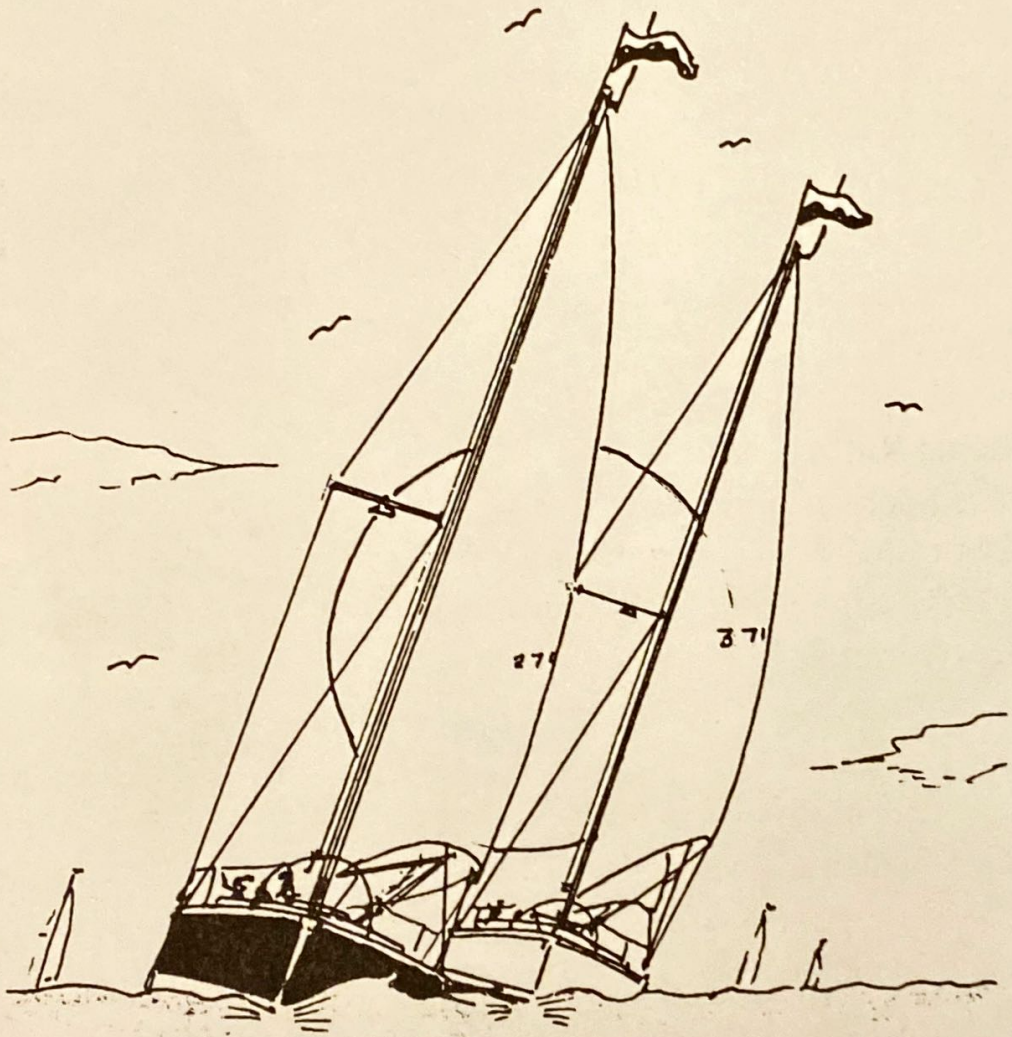




1997





271

371

12612



SOUTH BAY CRUISING CLUB

Table of Contents

Past Commodores	2
Commodore's Message	5
Regatta & Fleet Captains' Messages	6
Officers, Board of Governors & Committees	7
Social & Cruising Schedule	10
Racing Schedule	11
Notes to Racing Schedule	14
Notes to Cruising Schedule	15
Racing Program & Instructions	17
Qualifying to Race	17
Handicaps & Classes	18
Racing Rules & Programs	18
Race Scoring & Trophies	22
Committee Boat Assignments	23
Starting Line Procedures & Rules	24
Time Limit & Protests	26
Race Courses	28
SBCC Ships Store	32
The Year in Review	35
1995 Cruising Awards	42
SBCC Perpetual Trophies	44
1995 Trophies	45
SBCC Class Champions	46
SBCC Members	49
SBCC Fleet by Sail Number	54
Members' Yachts Alphabetically	59
Members' Zip Codes	62
Memoriam	63
Flag Etiquette	64
International Code Flags & Pennants	Back Cover



Honorary Life Members (Past Commodores)

The SBCC grants honorary life membership to all Past Commodores, in recognition of their devotion and duty to the Club. Each of them has contributed time, talent and friendship to help make the South Bay Cruising Club the success it is today.



WILLIAM CARL
1951



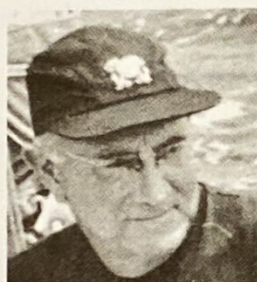
JAMES A. SWAN, JR.*
1952-1953



JOHN F. YOUNG
1954-1955



HENRY A.V. POST*
1956-1957



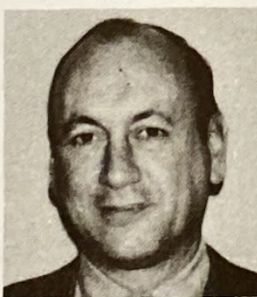
MERRITT L. SMITH*
1958-1959



ROBERT L. PATERSON
1960-1961



JOHN D. BEINERT*
1962-1963



EVERETT SEIDENBERG
1964-1965



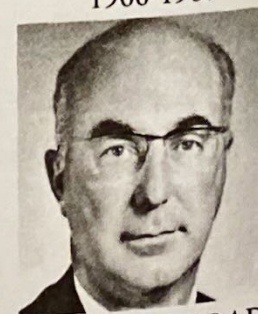
ROGER G. RAMSDELL
1966-1967



ALEX PEARSON
1968-1969



FRED C. EGGERSTEDT, JR.
1970-1971



WILLIAM F. BRADT*
1972-1973

*Deceased



M. WHITING THAYER
1974-1975



BUD ROSENBERG
1976-1977



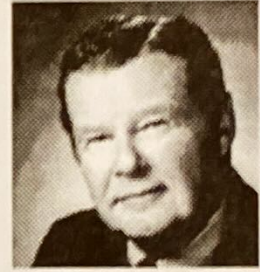
RICHARD C. NEHRING
1978-1979



BILL DWYER*
1980-1981



KEN KONDOR*
1982-1983



EARL MURRAY
1984-1985



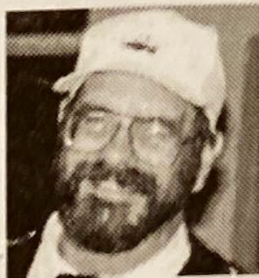
ANDY DAVIES
1986-1987



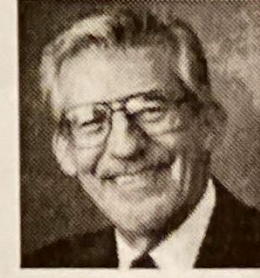
DON ZIMMER
1988-1989



BOB SHEPPARD
1990-1991



MIKE SMITH
1991-1993



ED PETROSKE
1994-1995

*Deceased

DRUMSHANBO - SBCC FLAGSHIP



SOUTH BAY CRUISING CLUB

P.O. Box 365
Babylon, New York 11702

**SBCC is a member of the Great South Bay Yacht Racing Association
United States Sailing Association**

P.O. Box 209
Newport, Rhode Island 02840

Yachting Club of America

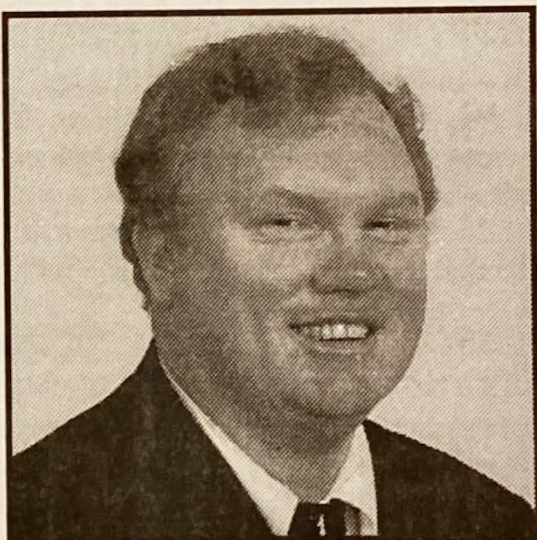
SBCC is listed in the Register of American Yacht Clubs. Our members are entitled to reciprocal courtesies at other Yacht Clubs.



COMMODORE'S MESSAGE

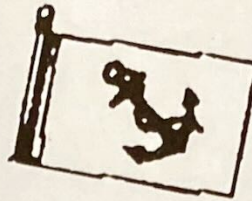
Since the second year of my term as Commodore is now in full swing, I have decided to unabashedly reminisce about my feelings toward sailing and the South Bay Cruising Club.

Over the Winter, I spent a lot of time envisioning the Spring and Summer boating scene around the canals and boat yards that dot the shoreline in the Towns and Villages where we reside. Even after 17 years of boat ownership, I feel the same anticipation for the beginning of the season that I did as a boy awaiting school to end. These feelings are irrevocably intertwined with my 14 year association with the members of the South Bay Cruising Club. Those past Commodores, flag officers, board members, and committee persons who have provided the cruising and racing programs that have given me so much pleasure deserve my perpetual gratitude.



Perhaps the highlight of my season is Flag Raising at the Babylon Yacht Club. The setting is idyllic, the turnout typically large, and good friendship and camaraderie ever present. The boat basin is filled with sailboats flying our burgee. Most are recently launched, smartly rigged, polished and varnished. Once underway, the rest of the cruising, racing, and hospitality events seem to take care of themselves. Those of you who have made this happen year after year appreciate the enormous amount of work that goes into perpetuating the existence of the Cruising Club. I would like to express my gratitude to my flag officers, the Board of Directors, Committee chairpersons and members who so ably performed last year. The challenge is to do it again this year so that in February of 1998 each of us will once again feel the excitement of the upcoming season. I am confident we will succeed.

*Sincerely,
Barry V. Pittman*



FLEET CAPTAIN'S MESSAGE

Welcome to another year of rendezvous, Cruises and parties. It was great to see so much activity last year and I hope for the same this year!

After two years of scoring the Kondor trophy, we have made an adjustment to the scoring rules to, hopefully, increase participation. This year, a rendezvous will count for two (2) points. The points awarded for finishing a race, taking a trophy in a race and hosting a rendezvous will remain at one (1) each. This way the people that don't race will have a better chance to compete for the Kondor trophy.

We have scheduled Saturday and Sunday rendezvous for two of the three day weekends again. I hope that you will all get out there and take advantage of the increased opportunities to socialize and sail. Also TRY a rendezvous in a location where you don't ordinarily go. You may see some new sights and faces as a reward for your explorations. No, the world does NOT fall off on the other side of the bridge! For you Easterners, you will find some lovely anchorage's west of Robert Moses. For you Westerners, life does exist east of Babylon.

See you out there.

Michael L. Kohl
Fleet Captain

REGATTA CAPTAIN'S MESSAGE

I hope that everyone in the club who participates in the racing program takes the time to read over this year's schedule and changes. There is a lot going on and quite a few changes to take note of. Great pain was suffered by those who put the effort into upgrading our racing program to get it where it is today and making it more enjoyable for everyone. Our highlights this year will be the Ocean Race and the Great River Race Series. Both will incorporate a "Cruising Class" to promote interaction in the club and maybe even give a chance for the two sections of the club to get to know each other. Both should be great events, however, we need your support by participating. This year the Double Handed Race will be back as well as the Pursuit Race. We increased the Championship Series Races to the best 8 of 12 races and a new scoring system is in effect for the Twilight Series.

Last year was successful mainly due to your support. Your comments and suggestions made last year have been put into effect into this year's program and should make the season more competitive. After all, we do have the best racing on the bay! Take time to review the schedule and get your crew together to come out and join in the fun.

The 1997-2000 racing rules are now in effect, so we are all forced with the challenge of figuring them out. Take advantage of our resources on our Web-site, join U.S. Sailing and most of all, go out sailing! Go out and have fun.

Jim Reichel
Regatta Captain



SOUTH BAY CRUISING CLUB

An organization formed in 1951 to promote cruising under sail on Great South Bay and nearby waters.

OFFICERS

Commodore, Barry Pittman -666-3032
 Vice Commodore, Dick LaBella - 277-4826
 Rear Commodore, Rich LaTorre - 321-7311
 Fleet Captain, Michael Kohl - 795-7725
 Regatta Captain, Jim Reichel- 665-2327
 Treasurer, Robin Kohl - 795-7725
 Corresponding Secretary, Joyce Gotard - 541-2805
 Recording Secretary, Lisa Cavalieri -588-2748
 Fleet Surgeon, Andy Peters - 766-6766
 Chantyman- Vacant

BOARD OF GOVERNORS

Lee Christiansen ---277-6311	Bill Menger---587-4930
Tom Gotard---541-2805	Ed Petroske---878-6126
Bill Grauer---277-6212	Bob Sheppard---472-0099
Don Zimmer---785-5246	

COMMITTEES

Cruising

Michael Kohl - 795-7725

Robin Kohl, Steve Brice, Tim & Phyllis Chambers, Barbara & Dennis Connor, Randy & Marilyn Davis, Dick Daytz, Joe & Annemarie Dudek, Bill & Barbara Dunleavy, Bill & Sally Eilbeck, Jim & Donna Ferguson, Brian & Judy Flett, Tom & Joyce Gotard, Bill & Vivian Grauer, Dick & Diane LaBella, Rich & Ginnie LaTorre, Larry & Diane Lowy, Joe McCormack, Barbara & Frank Peter, Ed & Joan Petroske, Barry & Michele Pittman, John & Corrine Rambold, Jim & Diana Schlitt, Ed & Kathy Simmons, Tom & Joyce Tyler, Ron Schaper, Ed Sowden, Merritt & Maryellen Warsaw

Hospitality

Bill & Sally Eilbeck, 661-1507

Richard Czach & Sandy, Marilyn & Randy Davis, Joe & Jean Fili, Brian & Judi Flett, Joyce & Tom Gotard, Dick & Dianne LaBella, Jack & Barbara Levitsky, Bob & Ronnie Martorana, Joe & Dotie McCormack, Bill & Beryl Menger, Gaspare & Laurie Messina, Kathleen Simmons, Ed & Carol Sowden, Bill & Nancy Thomas, Tom & Joyce Tyler, Don & Laurie Zimmer

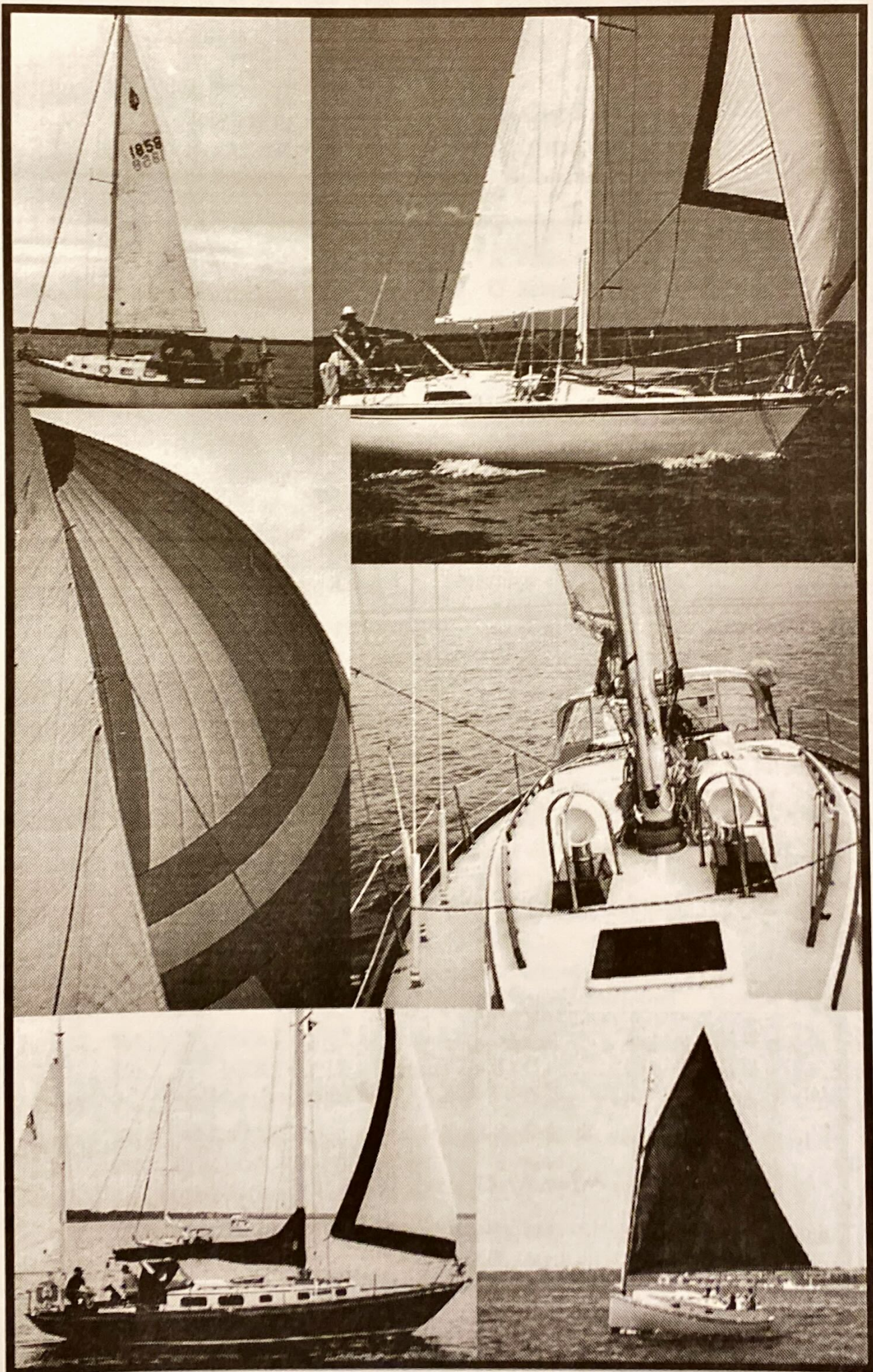
GSBYRA RepresentativeBob Sheppard - 472-0099

Handicap & MeasurementThom Penn - 277-5980

Kevin Padden, Doug Davies, Joe Dudek, Dick LaBella, Larry Becker,
Rich Rose

ProtestFrank Marinaccio - 231-6457

Brendan Brownyard, Lee Costelloe, Doug Crocker, Aileen Eppig, Dick
LaBella, Thom Penn, John Saxe, Greg Schneller





**SOUTH BAY CRUISING CLUB
1997 SOCIAL AND CRUISING SCHEDULE**

Date	Day	Event	Location	Vessel	Host
April 20	Sunday	Spring Brunch	Bay Shore Y.C.	Hospitality Committee	
May 10	Saturday	Rendezvous	Great River	Tranquilizer	Daytz
May 17	Saturday	Rendezvous	Unqua Heading	Stardust	Ferguson
May 24	Saturday	Rendezvous	Great River	Fox	Davis
May 25	Sunday	Rendezvous	Oak Island	Silhouette	Gotard
May 26	Monday	Comm. Day	BYC		Hospitality
May 31	Saturday	Rendezvous	Great River	Ailanthus	Grauer
June 1	Sunday	Clean up	Great River	Drumshanbo	Pittman
June 7	Saturday	Rendezvous	Patchogue River	CEE-J	Rambold
June 14	Saturday	Rendezvous	Oak Island	Leprechaun	Connor
June 21	Saturday	Spring Family Weekend	Watch Hill	Drumshanbo	Pittman
June 22	Sunday	New Members-Wine&Cheese	Great River	Welcoming Committee	
June 28	Saturday	Rendezvous	Great River	Njord	Eilback
July 3-23	Two-Three	Week Cruise	New England	Jubilation	Petroske
July 4	Friday	Rendezvous	Great River	Blaze	LaBella
July 5	Saturday	Rendezvous	Oak Island	Njord	Eilbeck
July 12	Saturday	Rendezvous	Sayville	Cee-J	Rambold
July 17-29	Saturday	Two Week Cruise	L. I. Sound	Reynard	Peter
July 19	Saturday	Rendezvous	Great River	First Light	Lowy
July 26	Saturday	Rendezvous	Hemlock	Pzaz	Schlitt



SOUTH BAY CRUISING CLUB

1997 RACE SCHEDULE

DATE	DAY	RACE	LOC	COM	START TIME	SEQ.	*NOTE
May 14	Wed.	BShr Twi Spring 1	Bay Shore	B. Cook	19:30	NO-SPIN	2,9
May 15	Thur.	Bab Twi Spring 1	Babylon	B.Grauer	19:30	NO-SPIN	2,9
May 18	Sun.	Sprint Race Series 1,2,3	Bay Shore	K. Padden	11:00	REG	2,7,8
May 21	Wed.	BShr Twi Spring 2	Bay Shore	G. Schneller	19:30	NO-SPIN	2,9
May 22	Thur.	Bab Twi Spring 2	Babylon	G. Schneller	19:30	NO-SPIN	2,9
May 26	Mon.	Creepstakes	Babylon	A. Eppig	11:00	SPECIAL	1,5
May 28	Wed.	BShr. Twi Spring 3	Bay Shore	J. Pallotta	19:30	NO-SPIN	2,9
May 29	Thur.	Bab Twi Spring 3	Babylon	J. Reichel	19:30	NO-SPIN	2,9
June 1	Sun.	FOUNDERS CUP	Bay Shore	R. Finkle	12:00	REG	4,10
June 4	Wed.	BShr Twi Summer 1	Bay Shore	M. Hanrahan	19:30	REG	2,9
June 5	Thur.	Bab Twi Summer 1	Babylon	J. Dunnells	19:30	REG	2,9
June 8	Sun.	SBCC Invitational	Bay Shore	B. Schwartz	12:00	REG	10
June 11	Wed.	BShrTwi Summer 2	Bay Shore	M. Randazzo	19:30	REG	2,9
June 12	Thur.	Bab Tw Summer 2	Babylon	B. Grauer	12:00	REG	2,9
June 14	Sat.	SBCC Double-handed 1&2	Babylon	A. Eppig	11:00	REG	1,2,8
June 18	Wed.	BShr Twi Summer 3	Bay Shore	D. Davies	19:30	REG	2,9
June 19	Thur.	Bab Twi Summer 3	Babylon	P. Captain	19:30	REG	2,9
June 22	Sun.	Watch Hill Fam. Series 1	Watch Hill	B. Pittman	TBA	NO-SPIN	1,7,12
June 25	Wed.	BShrTwi Summer 4	Bay Shore	J. Dudek	19:30	REG	2,9
June 26	Thur.	Bab Twi Summer 4	Babylon	G. Turner	19:30	REG	2,9
June 28	Sat.	SBCC OCEAN RACE	F.I. Inlet	S. Brice	13:00	SPEC.	1,4,10,12
July 2	Wed.	BShr Twi Mid Sum 1	Bay Shore	F. Marinaccio	19:30	REG	2,9
July 3	Thur.	Bab Twi Mid Sum 1	Babylon	P. Rendich	19:30	REG	2,9
July 5	Sat.	BYC Invitational 1	Babylon	BYC	13:00	REG	3,6,7,12
July 6	Sun.	BYC Invitational 2	Babylon	BYC	12:00	REG	3,6,7,12
July 9	Wed.	BShr Twi Mid Sum 2	Bay Shore	B. Wheeler	19:30	REG	2,9
July 10	Thur.	Bab Twi Mid Sum 2	Babylon	K. Padden	19:30	REG	2,9
July 12	Sat.	SYC-JACK TROPHY 1	Nicoll Bay	SYC	TBA	REG	3,6,7,12
July 13	Sun.	SYC-JACK TROPHY 2	Sayville	SYC	TBA	REG	3,6,7,12
July 16	Wed.	BShr Twi Mid Sum 3	Bay Shore	D. Davies	19:30	REG	2,9
July 17	Thur.	Bab Twi Mid Sum 3	Babylon	B. Forman	19:30	REG	2,9
July 19	Sat.	COMMODORES CUP	Nicoll Bay	T. Penn	12:00	REG	4,10
July 20	Sun.	BAB SBCC CHALLENGE CUP	Babylon	BYC	12:00	REG	3,5,7,12
July 23	Wed.	BShrTwi Mid Sum 4	Bay Shore	L. Christiansen	19:30	REG	2,9
July 24	Thur.	Bab Twi Mid Sum 4	Babylon	J. Davis	19:30	REG	2,9
July 26	Sat.	Pursuit Race Series 1&2	Bay Shore	M. Kind	11:00	REG	1,2,7,8
July 30	Wed.	BShr Twi Late Sum 1	Bay Shore	B. Cook	19:30	REG	2,9
July 31	Thur.	Bab Twi Late Sum 1	Babylon	B. Kennedy	19:30	REG	2,9



**SOUTH BAY CRUISING CLUB
1997 SOCIAL AND CRUISING SCHEDULE**

Date	Day	Event	Location	Vessel	Captain
August 2	Saturday	Rendezvous	Dem.Point/Sore Thumb	Bagheera	Schaper
August 9	Saturday	Tacos & Tequilla	Great River	Jam V	Dudek
August 10	Sunday	Champagne Breakfast	Great River	Njord	Eilbeck
August 16	Saturday	Blast	Great River	Hospitality Committee	
August 17-23	One Week Bay Cruise		Great So. Bay	Voodoo Lady/Sea Dream	Sowdon/Dunleavy
August 23	Saturday	Sink or Swizzle	Hemlock	Carefree	LaTorre
August 30	Saturday	Bon Voyage Rendezvous	Gilgo	Lady Barbara	Nielsen
September 6	Saturday	Rendezvous	Oak Island	Silver Bulet	Reichel
September 13	Saturday	Rendezvous	Great River	Saltheart	McCormack
September 20	Saturday	Rendezvous	Unquq Heading	Eramia	Kachel
September 27	Saturday	Rendezvous	Atlantique	Judi Ann	Flett
October 4	Saturday	Fall Family Wkend	Watch Hill	Broadbill/Our Time	Warsaw/Chambers
October 11	Saturday	Rendezvous	Atlantique	Jubilation	Petroske
October 18	Saturday	Rendezvous	Robert Moses	Finnian	Simmons
October 25	Saturday	Rendezvous	Amityville River	Dragon	Kohl
October 25	Saturday	Boat Yard Party	Yacht Service	Hospitality Committee	
December 20	Saturday	Holiday Party	BSYC	Hospitality Committee	



**SOUTH BAY CRUISING CLUB
1997 RACE SCHEDULE**

DATE	DAY	RACE	LOC	COM	START TIME	SEQ.	NOTE
Aug 2	Sat.	FOULKE TROPHY RACE	Bay Shore	J. Morgan	18:00	REG	4,5,11
Aug 6	Wed.	BShr Twi Late Sum 2	Bay Shore	B. Wheeler	19:30	REG	2,9
Aug 7	Thurs.	Bab Twi Late Sum 2	Babylon	B. Mcloughlin	19:30	REG	2,9
Aug 9	Sat.	SMITH TROPHY RACE	Babylon	H. Smith	12:00	SPEC	2,4,10,13
Aug 10	Sun.	Great River Race Series 2	Nicoll Bay	L. Costelloe	12:00	SPEC	2,10,13
Aug 13	Wed.	BShr Twi Late Sum 3	Bay Shore	F. Marinaccio	19:30	REG	2,9
Aug 14	Thur.	Bab Twi Late Sum 3	Babylon	M. O'Connell	19:30	REG	2,9
Aug 15	Fri.	Great River Race Series 3	Nicoll Bay	M. Randazzo	16:00	REG	2,10,13
Aug 16	Sat.	Great River Race Series 4	Nicoll Bay	S. Siegler	11:00	SPEC	2,10,13
Aug 17	Sun.	WEST ISLAND RACE 5	Nicoll Bay	D. LaBella	12:00	SPEC	2,4,10,13
Aug 20	Wed.	BShr Twi Late Sum 4	Bay Shore	L. Becker	19:30	REG	2,9
Aug 21	Thur.	Bab Twi Late Sum 4	Babylon	J. Grover	19:30	REG	2,9
Aug 23	Sat.	SBC Double-handed Race II 3&4	Babylon	J. Grover	19:30	REG	1,2,8
Aug 27	Wed.	BShr Twi Fall 1	Bay Shore	L. Christiansen	19:00	REG	2,9
Aug 28	Thur.	Bab Twi Fall 1	Babylon	B. Kennedy	19:00	REG	2,9
Aug 30	Sat.	Whalers Race	Babylon	W. Brooks	12:00	NON-SPIN	1,10,12
Aug 31	Sun.	Ladies Day Race	Babylon	J. Reichel	12:00	NON-SPIN	1,10
Sept 3	Wed.	BShr Twi Fall 2	Bay Shore	R. Finkle	19:00	REG	2,9
Sept 4	Thur.	Bab Twi Fall 2	Babylon	S. Ossandon	19:00	REG	2,9
Sept 6	Sat.	DISTANCE RACE	Bay Shore	S. Siegler	11:00	NO-SPIN	4,10,14
Sept 10	Wed.	BShr Twi Fall 3	Bay Shore	J. Dudek	19:00	REG	2,9
Sept 11	Thur.	Bab Twi Fall 3	Babylon	S. Ossandon	19:00	REG	2,9
Sept 13	Sat.	GREAT RIVER CUP 1&2	Nicoll Bay	B. Mcloughlin	12:00	REG	1,2,4,7,8
Sept 17	Wed.	BShr Twi Fall 4	Bay Shore	T. Jones	19:00	REG	2,9
Sept 18	Thur.	Bab Twi Fall 4	Babylon	T. Jones	19:00	REG	2,9
Sept 20	Sat.	LOUIE ORR CUP	Babylon	BYC	13:00	BYC	3,4,6,7,12
Sept 24	Wed.	BShr Twi Wrap up 1	Bay Shore	L. Becker	19:00	NO-SPIN	2,9
Sept 25	Thur.	Bab Twi Wrap up 1	Babylon	M. Myerson	19:00	NO-SPIN	2,9
Sept 28	Sat.	DISCOVERER'S RACE	Bay Shore	M. Goodman	12:00	REG	4,10
Oct 1	Wed.	BShr Twi Wrap-up 2	Bay Shore	B. Pittman	19:00	NO-SPIN	2,9
Oct 2	Thur.	Bab Twi Wrap-up 2	Babylon	G. Turner	19:00	NO-SPIN	2,9
Oct. 4	Sat.	Open for race resails /cancelations	Bay Shore	TBA	12:00	REG	
Oct 8	Wed.	BShr Twi Wrap-up 3	Baylon	B. Schwartz	19:00	NO-SPIN	2,9
Oct 9	Thur.	BabTwi Wrap-up 3	Babylon	J. Davis	19:00	NO-SPIN	2,9
Oct 12	Sun.	Fall Family Race	Watch Hill	R. LaTorre	11:00	NO-SPIN	1,7,10
Oct 19	Sun.	LAST CHANCE	Bay Shore	S. Penny	12:00	REG	4,10
Nov 29	Sat.	Turkey Race	Babylon	TBA	12:00	REG	1,10
Jan 1	Thur.	New Years Day Race	Babylon	TBA	12:00	REG	1,10



NOTES LEGEND

1. See instructions IIID - SPECIAL RACES- see under individual race for special information
2. See instructions IIIC-SERIES INFORMATION-see under individual series for special information
3. Invitational Race-Obtain information from individual yacht club or handout for courses and race instructions
4. Counts for season class championship - best 8 of 12
5. Finish at Babylon Y.C. dock
6. Requires registration and or fee. Check in with committee boat.
7. TBA to be announced by race committee. Check in with committee boat.

TIME LIMITS

8. 14:00 First Race/18:00 Second Race
9. 22:30 Twilights
10. 18:00
11. No time limit
12. See the committee boat for handout instructions.
13. Part of Great River Race series
14. 20:00 time limit



Our burgee proudly flies over Vik, Iceland; thanks to Dotty Max and a friendly farmer.



NOTES TO 1997 SCHEDULES

NOTES TO SOCIAL AND CRUISING SCHEDULE

1. Refer to Cruising Guide for directions to Rendezvous location.
2. Details to be published in "From the Masthead" or otherwise furnished at a later date.

AWARDS

Cruising Award—This award is given for participation in any of the Club's organized cruises. To qualify, a yacht must anchor or tie-up with the fleet for at least 50% of the time designated for a cruise by the Fleet Captain. The Cruise Captain will submit a list of yachts eligible, based on Cruise attendance records.

The Rendezvous Awards are made, at the Fleet Captain's discretion, to boats that attend a minimum number of rendezvous.

Green Water Award for a cruise of greater distance and duration than the official cruises.

Blue Water Award is made only as recognition for an extended cruise off soundings. A select committee, along with the Fleet Captain, will review candidates and make this award only when they deem the cruise to be an outstanding achievement.

Blue Water Awards:

1952 - Jack Young (Doc Hamlin special award)	1972 - Arthur Sternberg. M D.
1953 - R.W. Bennett	1973 - Bill Milligan
1964 - Art Flynn	1979 - Bob Wissman
1965 - Stuart Baldwin (Ed Macy special award)	1980 - Edgar Sabbeth
1966 - Ed Macy	1987 - Russ Colombo
1967 - Ed Forsyth	1990 - Bob Forman
1968 - Jack Young (Don Streit & Ed Ricketts special awards)	1991 - Rich Czach
1969 - Chet Phipps	1992 - Eric Forsyth

Green Water Awards:

1985 - Frank & Joyce Holwell	1988 - Frank & Joyce Holwell
1985 - Bill & Barbara Dunleavy	1989 - Roger Goodwin
1987 - Harry Wilburger	1992 - Mitch & Shirley Silbert
	1996 - Jack & Barbara Nielsen



THE SBCC RENDEZVOUS

All hands are invited and their children, their guests and their pets. You don't have to participate in a club race to join the rendezvous raft-up that usually follows. Notifying anyone in advance is not necessary, nor must you arrive at any particular time. Each rendezvous has a designated "Host" who has been appointed by the Fleet Captain to act as host boat and will be known by the very large Club Burgee. Check in to get credit for attendance and to be included in any special entertainment that may be planned.

RAFT-UP PROCEDURE

It has always been a tradition that no invitation is necessary to join a raft-up at any SBCC rendezvous. All you have to do is ask politely "May I come along side?"

Generally speaking, you should expect to put down your own anchor when rafting, so that boats on either side of you can withdraw with a minimum of fuss. When you wish to cross somebody's deck to reach another boat, it's polite to ask permission and to cross via the foredeck, if possible. If you are joining a group aboard another boat, it's customary in the SBCC to bring your own drinks and to contribute to the snacks.

Do any boats remain rafted all night? Sure, but as a rule, only close friends and long time cruisemates. Usually it is better, if in doubt, to withdraw quietly and go anchor nearby.

CRUISES

Early in the Spring, the Fleet Captain and the Cruise Committee scout among the membership for opinions and work out tentative cruise itineraries. A shorter "Close-in" cruise is often suggested, such as Peconic Bay-Shelter Island area, as well as a more extensive cruise to New England or Chesapeake Bay. Lately, a local around-the-Bay Cruise has been scheduled.

The Fleet Captain appoints Cruise Captains — usually skippers who have had experience in going to the ports outlined—to work out a rough-draft itinerary which is published in the Masthead and then presented to the membership at the March Meeting. Debate ensues, adjustments are made based on an attained consensus. All is duly noted by the Cruise Captains, who prepare a final, more detailed itinerary. Additional meetings are held to review the itinerary and share concerns.

During the Cruise, the itinerary may be adjusted to suit weather conditions or the whims of sailors and their families. Sometimes an anchorage is just too delightful to leave. Cruise Captains usually try to get the entire fleet together at least once or twice during the cruise.



SBCC RACING PROGRAM AND INSTRUCTIONS

I. QUALIFYING TO RACE

All properly equipped sailboats owned or chartered by SBCC members in good standing are eligible and encouraged to participate in Club races provided they have requested and received a SBCC handicap and otherwise comply with the standards set forth below.

A. INTENT OF PROGRAM

It is the intent of the SBCC that all sailboats racing in club sponsored events shall contain cruising accommodations with an enclosed cabin. It is recognized that these accommodations will vary according to the type and size of the boat. However, all sailboats are assumed to comply with the manufacturers' standard hull and accommodation plans. It is the responsibility of the owner of any vessel which has been modified or is of unique design to inform the handicap committee of the irregularity prior to racing. Such vessel will then be reviewed by the handicap committee and rated accordingly.

The SBCC handicap system assumes that a sailboat is equipped to race. It does not attempt to rate a partially equipped boat or a boat which differs from others in its class, in that it is unusually heavy, out of balance or has unusual windage (as from a dinghy on davits).

B. EQUIPMENT

As a minimum all cruising sailboats participating in a SBCC sanctioned club race must have the following equipment on board and in operable condition:

a. All equipment required for the participating vessel to comply with Federal, State, and Local requirements.

b. The following additional items:

- * Bunks, securely installed.
- * Toilet, securely installed or fitted bucket.
- * Galley facilities.
- * At least 2 gallons of potable water.
- * All spars including spinnaker and whisker poles marked in accordance with the rating form.
- * Headsails of 130% LP or greater shall be measured and marked with the yacht's sail numbers.
- * An engine or auxiliary motor with enough fuel to return to its home port from anyplace on the race course.
- * Lifelines as defined by Offshore Racing Council (ORC) special regulations paragraph 6.61 thru 6.62 as published by US Sailing date 1994. If the boat is not equipped with lifelines as standard equipment, U.S. Coast Guard approved life jackets must be worn by all members of the crew while racing. After sunset, all life jackets must have strobe lights attached.
- * First aid kit and manual.
- * A working VHF radio.

c. It is strongly recommended that all sailboats participating in a SBCC sanctioned race on the Great South Bay comply with US Sailing category 4 equipment requirements.

d. Ocean Races and Night Races

- * It is strongly advised that additional safety equipment for these races include US Sailing category 3 equipment requirements.
- * It is strongly recommended that all sailboats participating in these events should be equipped with the following additional equipment::
 - a. At least two water resistant flash lights.
 - b. Man overboard pole with strobe light..

* *One safety harness is required for the skipper and each crew member for the Foulke Trophy Race.*



SBCC RACING PROGRAM AND INSTRUCTIONS

C. INSPECTION POLICY AND PROCEDURES

As a condition precedent to racing in a SBCC sponsored or sanctioned event, all vessels are subject to inspection for compliance with the stated equipment requirements.

The SBCC measurer or designated assistants may conduct random inspections of all SBCC sailboats with current SBCC handicaps. These inspections will be conducted with courtesy and as efficiently as possible with permission of the owner or their representative.

If in the opinion of the measurer or designated assistant, the inspected sailboat does not have on board the required equipment or does not comply with the intent of the SBCC racing program, the measurer will file a formal protest with the Protest Committee. Boats found not to be in compliance by the protest committee will be subject to disqualification.

D. HANDICAPS

The SBCC fleet includes many different types of sailboats. In order to make race participation attractive to as many members as possible, SBCC Handicap racing is offered. Under this system, every yacht in the fleet upon request to the Handicap/Measurement Chairman is given a SBCC Rating based on its maximum speed potential.

The SBCC Handicap System rates each yacht according to its maximum speed potential, thereby encouraging each skipper to get the best performance from his yacht.

Maximum speed potential is established for each yacht through:

- statistical analysis of race data for consistently well-sailed boats of similar design
- comparison with data from other racing fleets
- speed-trending data from past performances

Under the SBCC Handicap System all yachts of different design will have distinctive maximum speed characteristics from which individual handicaps are derived. Fine tuning factors are applied to yachts of the same design to account for differences in rig, prop type, sail complement, etc.

Each racing skipper is obliged to contact the Handicap/Measurement Chairman in advance of his first race under the following conditions:

- A particular yacht is to be raced in the SBCC fleet for the first time.
- The skipper has raced another yacht bearing the same sail number during the season
- The sail complement has been changed.
- The basic design of the yacht is modified in any way which could affect its speed potential.

E. HANDICAP APPEAL

A skipper who believes his yacht's handicap might deserve correction may request a handicap review by submitting a written request to the Handicap Committee stating the reasons he believes a review is in order. The Handicap Committee will respond in writing within 10 days and the new handicap, if any, will take effect as of the date of the written decision. Skippers who are not satisfied with their decision have recourse by appealing directly to US Sailing. The appeal to US Sailing can only be done once in each calendar year. Contact the Handicap Committee or US Sailing for the procedure and current cost.

F. SBCC HANDICAP CLASSES

Three classes, Spinnaker, Non-Spinnaker and special Cruising Class are scored under the SBCC Handicap System.



SBCC RACING PROGRAM AND INSTRUCTIONS

—Skippers electing to race in the Spinnaker class may use their full sail complement, and any sail combination consistent with US Sailing racing rules or special race instructions mentioned in these instructions or by special handouts.

—It is the intent of the Non-Spinnaker class to restrict sail inventory use to only those sails that can be correctly flown on all points of sail. In the Non-Spinnaker class, only one headsail (either a jib or genoa of a minimum of 3 ounce cloth or equivalent) may be flown in the foretriangle at any one time. Yachts handicapped as having permanent double head rigs will be permitted to fly their staysail when racing Non-Spinnaker.

— Special Cruising Class-Members who do not regularly race and feel their boat is not "properly" equipped for racing but has the required equipment to race may enter this class when available.

—Members may change classes as often as they desire, as long as it is done before the first warning signal.

G. RACING NUMBERS

Racing numbers, either US Sailing or SBCC, are required on mainsails, spinnakers and overlapping (LP greater than 130% J) headsails, in accordance with current US Sailing rules.

H. MEMBERSHIP RESTRICTION

No boat shall race in a SBCC sponsored event (except invitationals) unless commanded by a SBCC member or associate member.

II. RACING RULES

Racing rules of the US Sailing Association shall be observed except as otherwise specified in these instructions. Burgees and other flags may be flown when racing. Government navigation buoys not stated as being marks of the course may be disregarded at the discretion of the skipper.

III. RACE PROGRAM

A. RACE SCHEDULE

SBCC sponsors numerous races and participates in various invitationals as set forth in the 1997 race schedule. See schedule for details and special notes.

B. COURSES

Courses used for SBCC races and some invitationals are set forth on the pages following these instructions. They are grouped by starting area as follows:

Babylon Nicoll Bay Watch Hill Bay Shore Heckscher

For each of these areas, a variety of courses is described below, each bearing a distinguished letter. The Course selected will be signaled from the Committee Boat by the appropriate letter code flag.

Any course can be reversed by code Flag "R" or shortened by code flag "S" or finish changed by flag "V" described in Part VI B.



SBCC RACING PROGRAM AND INSTRUCTIONS

III. C. SERIES RACES

Babylon Yacht Club July Invitational Series

This is a two-race series with no throw-out. The courses, starting sequence, and other race instructions will be provided by the Babylon Yacht Club and handed out by the committee boat on station prior to the first race. You must register with the yacht club to race Babylon Yacht Club invitational series.

Sayville Yacht Club Invitational Series (Jack's Trophy)

This is a two race series sailed over two days. See SYC Race Committee for a handout and details. Register with the yacht club.

Sprint Series

Three short races. Next race starts immediately after last boat finishes.

SBCC Class Championship Series

This is an overall season series based on the scoring of selected races. See Part IV B.

Bay Shore & Babylon Twilight Series

These are best 3 of 4 series except for the first and last twilight series. The first and the last twilight series are the best 2 of 3 races.. They will be scored on the basis of a yacht's best three races, except committee boat as noted in Part IV D. These series will have non-spinnaker starts for the first and last series, and regular starts for the four middle series.

III. D. SPECIAL RACES

BYC/SBCC Challenge: Babylon Yacht Club has challenged the SBCC. Each club will participate with an equal number of boats. This is a **VOLUNTEERS ONLY** race. Please register your desire to race early with the regatta chairman.

Ladies' Race—A Non-Spinnaker race. Skipper must be a woman. The Patricia A. Kelly Trophy will be awarded to the yacht with best corrected time with an all female crew. Yachts eligible for this trophy must compete in the **ALL FEMALE** division.

Single-Handed Creepstakes — Only skipper is allowed on boat during race. Two classes: 27 feet LOA and over; and under 27 feet LOA. Non-Spinnaker only.

West Island Race—Nicoll Bay course H may be sailed in either direction.

Watch Hill Family Race—A Non-Spinnaker race leaving from Watch Hill Sunday morning. Crews must sleep aboard their yacht Saturday night at Watch Hill. Start time to be announced by committee boat at dock.

SBCC SPECIALITY RACES

Pursuit Race- This unusual race is unique in the sense that your handicap time allowance is given to you before you cross the start line. Your handicap time allowance will be published in the *Masthead* immediately preceding the race. The time given for your (continued on page 21)



SBCC RACING PROGRAM AND INSTRUCTIONS

boat is the time you start after the start gun has been fired. The first boat to cross the finish line after properly starting wins. The order of finish will be the actual order of boats crossing the finish line. The race course will be predetermined and published in the *Masthead*. This is a non-spinnaker, 2 race series.

Double Handed Race- Only 2 people are allowed on a boat during the race. (A skipper and 1 crew) This race will be a regular start with a spinnaker and non-spinnaker start. No size limitations are in effect.

Sayville Yacht Club/Jack's Trophy- This 2 race series, sponsored by the Sayville Y.C. will be scored by the SYC as the combination of the corrected times of the yachts participating in both races. A party is scheduled that Saturday night for all participants.

SBCC- Distance Race

This regular start race will be a "day-time" Foulke Trophy race. Course length will be specified by a special race course set in the Bay Shore start area. (see courses for details) Time limit is until 20:00 for 1st place finishers. A handout may be issued.

Whalers Race

This "old fashion" race requires that all racing boats be anchored in a position behind the starting line with all sails down before the preparatory signal. No sails or anchor may be raised before the start signal or yacht will be disqualified.

Great River Cup

This race is an invitational race, open to all members of yacht clubs registered with the GSBYRA and any other notable sailing organizations in the Great South Bay. This SBCC invitational, is a two race series that will be held in Nicoll Bay with a raft up in Great River, coinciding with a SBCC rendezvous.

Turkey Race

This is a post season race, with an after race gathering at a place determined by Committee Boat. This race will have a regular start.

IV. RACE SCORING AND TROPHIES

A. SCORING METHOD

SBCC races will be scored using the Time on Distance Method. A yacht's time allowance is calculated by multiplying her SBCC handicap by the race course distance. The time allowance is then subtracted from the yacht's elapsed time yielding corrected time. The yacht with the lowest corrected time is the winner.*

Preliminary race results are available to each participating skipper shortly after each race and official results are printed periodically in the "Masthead."

* In determining the winner of the Perpetual Trophies (Part IV F), the race Scorer may apply an 18 second per mile adjustment between the winner of the spinnaker class and non-spinnaker class if it is determined that the spinnaker class carried the spinnaker to advantage for one third of the race.



IV. B. CHAMPIONSHIP SERIES SCORING

NON-SPINNAKER AND SPINNAKER CLASS CHAMPIONSHIP - Scoring

A class champion will be determined, and a trophy will be awarded annually, to the yacht with the most points in each class. Scoring will be based on the best 8 of 12 races designated with note 4 in the race schedule. Only yachts finishing at least five of these races will be eligible for a trophy. Points for these races are computed on the following basis:

- 1st place yacht receives points equal to the number of starters in the race plus 1/4 point.
- 2nd place yacht receives 1-1/4 points less than the 1st place yacht.
- 3rd place yacht receives 2-1/4 points less than the 1st place yacht, etc.

TWILIGHT SERIES CHAMPIONSHIP - Scoring

Twilight races will be scored using the following method and point awards. (System based on performance and participation If more than 3 boats compete) Otherwise 1st place is awarded 3, 2nd place 2 and 3rd place 1.

1st place on corrected time	5pts
2nd place on corrected time	4pts
3rd place on corrected time	3pts
4th place on corrected time	2pts

All finishers after 4th place receive 1 point for participation. The boats with the highest cumulative totals will receive trophies as indicated in the trophy section.. Scored on the best 16 of 22 races you must have at least 12 races in one division to qualify.

C. OTHER SERIES SCORING

Points for each race will be awarded on the basis of 3/4-point for first, two points for second, three points for third, etc. DNF and WDR boats will receive one point more than the number of boats in that class that started in the series. DNS and DSQ boats will receive two points more than the number of boats in that class that started in the series.

A starter in any one race of the series will be considered to have started in all the races of the series. Series position will be determined by the total points accumulated by each yacht, in inverse order.

D. SERIES TIE BREAKER

When there is a tie on points between two or more yachts, the tie shall be broken in favor of the yacht or yachts with the most first places, and when the tie remains, the most second places and so on, if necessary, for such races as count for total points. If a tie still remains, it will be broken in favor of the boat which beat the other the last time they raced against each other, throw outs included.



D. SERIES SCORING FOR COMMITTEE BOATS

A yacht that serves as committee boat for one race of any series will receive credit towards series qualification for that race and points equal to the average of its finish positions in the other races of the series, DNS and DNF races included. This does not apply to the Twilight Championships.

E. RACE TROPHIES

Trophies for individual SBCC races (when not part of a series) will be awarded to each class, according to the following schedule:

Number of Starters	Trophies for
2 or 3	1 st
4 through 6	1st and 2nd
7 through 14	1st, 2nd and 3rd
15 or more	1st, 2nd, 3rd and 4th

In SBCC series, the greatest number of starters in any race will govern the number of trophies awarded for that series. Only first place trophies will be awarded for the Class Championship Series and Twilight Championships.

F. PERPETUAL TROPHIES

Perpetual trophies are awarded for one year only. They are awarded to the yacht with the best corrected time based on the SBCC Handicap rule.

Each year the club awards seven perpetual trophies, as follows:

Commodore's Cup—Best corrected time in the Commodore's Cup race.

Foulke Trophy—Best corrected time in the Foulke Trophy race (night race).

Smith Trophy—Best corrected time in the Smith Trophy race.

Deale Trophy—Best corrected time in the West Island race.

Governor's Cup—Best total score for the Commodore's Cup West Island and Foulke Trophy races. High Point Scoring System.

Patricia A. Kelly—Best corrected time in the Ladies' Race by a yacht with an all-female crew. Additional trophies will be awarded to yachts with all-woman crews in accordance with the trophy schedules.

Cruising Club Crock—Best corrected time in the Around Long Island Regatta scored with SBCC Handicaps

Keeper cups are given to winners of these trophies and their names are engraved on the perpetual trophy. It is the responsibility of the winner of the perpetual trophy to return it by October 1st to the Trophy Chairman for engraving of the following year's winner.

V. COMMITTEE BOAT ASSIGNMENTS

A. SERVING AS COMMITTEE

The SBCC depends upon the cooperation of all members. Being the Committee Boat for a race is an important responsibility. It is a job not to be taken lightly for it is the heart of a successful racing program. Reliable, timely and accurate performance is essential.

Race Chairmen are assigned by the Regatta Committee, and listed in the Race Schedule. *These assignments are obligatory.*



SBCC RACING PROGRAM AND INSTRUCTIONS

B. CHANGES

A Race Chairman may switch assignments with another Race Chairman provided that the Regatta Chairman is notified at least 24 hours before the race. Arranging such changes is the sole responsibility of the assigned skipper and does not relieve him or her of responsibility.

C. PENALTIES

Any Race Chairman who willfully fails to do his or her assignment shall not be scored in any SBCC race for a period of one year from the date of his or her scheduled committee boat assignment. As an alternative penalty, a Race Chairman who failed to do his or her race assignment for the first time in the racing season will be scored in SBCC races after payment of a \$100.00 fine which shall go to the SBCC General Fund.

VI. STARTING LINE PROCEDURES AND RULES

A. CLASS STREAMERS

Racing yachts are required to fly streamers from their standing backstays. Streamers should measure 4"x18".

Creepstakes		Ladies Race	
Class	Color	Class	Color
LOA 27 ft and over	Blue	Mixed Crew	Blue
LOA under 27 ft	Yellow	All Female	Yellow

All Other Races	
Class	Color
Spinnaker	Blue
No-Spin	Yellow
Special Cruising	White

Failure to display the appropriate streamer may be considered grounds for disqualification. There is no race of a given class unless two or more qualified yachts start.

B. CODE SIGNALS

Code flags A through K are used to designate courses (see course instructions). Code flags below apply to all SBCC conducted races:

L—Come within hailing distance for instructions.

M—ROUND or pass the object displaying this signal instead of the mark it replaces.

N—ABANDONMENT, race called off (accompanied by three guns).

R—Sail the designated course in the REVERSE direction, Leave all marks to the opposite hand.

S—Sail the SHORT course prescribed in the course instructions. When flown after the start (accompanied by two guns), finish between the committee boat and the nearby mark of the course.

T—Sail the designated course TWICE around. The "X" mark is a mark of the course the second time around. For any course that needs an explicit description of how to handle the X mark on the second time around, that this be done with a note in the course or by a diagram.

V—Finish at the Babylon Y.C. dock.

Answering Pennant—POSTPONEMENT signal (accompanied by two guns). Starts postponed fifteen minutes. Warning signal will be made 1 minute after Answering Pennant is lowered.

1st Repeater—GENERAL RECALL signal



SBCC RACING PROGRAM AND INSTRUCTIONS

C. STARTING

Signals will be made at five minute intervals with each signal lowered one minute before the hoisting of the next. The visual signal governs; the gun merely calls attention to it. A red signal will be visible until one minute before the warning signal.

D. STARTING SEQUENCE

Abbreviations:

warn - warning signal
 prep - preparatory signal
 S/ - start signal

Sp - Spinnaker Class
 NS - Non-spinnaker Class
 CRU - Special Cruising Class

TIME	SHAPE	SPECIAL START	REGULAR START	NO SPIN START	CREEP-STAKES	LADIES DAY
:00	Yellow	Warning	Warning	Warning	Warning	Warning
:05	Blue	Prep	Prep	Prep	Prep	Prep
:10	Red	Start/Spin	Start/Spin	Start	Start (Over 27)	Start/Mixed Crew
:15	Yellow	Prep	Prep		Prep	Prep
:20	Blue	Start/No Spin	Start/NoSpin		Start (under 27)	Start (Women)
:25	Red	Prep				
:30	Yellow	Start/Crus.				

When, after a starting signal, all the yachts of the class or classes involved have properly started, the Race Committee will announce "all clear."

E. STARTING LINE ETIOUETTE

Racing skippers are reminded to stay clear of the starting line until the Preparatory Signal for their class. *Classes not starting are to remain clear of all yachts in the division before them. Failure to do so may result in disqualification.*

The Preparatory Signal for each class is given five minutes prior to the starting signal. Yachts- starting with the wrong class may be disqualified.

Skipper electing to change class after arriving in the starting area (but before the warning signal) must notify the race committee of that change.

F. RECALLS

The Race Committee must attempt to sound one blast of a horn or whistle and announce the sail number of each yacht on the course side at the start. **Committee boats are required to announce all clear or to announce recalls, and are encouraged to use VHF channel 72 to announce recalls.** Near by yachts are required to pass the hail. The onus of making a fair start lies on each yacht, and failure to hear or heed a recall will not prevent the yacht on the course side at the start from being penalized. Responsibility for determining compliance with the rules rests with the Race Committee. Yachts making an improper start will be penalized by having one-half hour added to their elapsed time, whether or not they have been notified.



SBCC RACING PROGRAM AND INSTRUCTIONS

General Recall: If there should be a number of unidentified boats on the course side at the start, or if an error is made in the starting procedure such as significant inaccuracy in the interval between signals, the Race Committee will make the General Recall signal. The General Recall signal is the First Repeater code flag accompanied by two guns. The starting sequence for the class that has been recalled begins with preparatory signal which shall be signaled one minute after the first repeater is dropped. The recalled class will be the next class to start.

G. ANTI-BARGING MARK

The committee boat may use an "anti-barging mark." If this mark is used racers shall not pass through the line formed by the anti-barging mark and the committee boat at any time—even while "starting." The penalty for infringing on this restricted line (at any time) or for touching (while starting) the anti-barging mark, is disqualification. **The anti-barging mark does not change the starting line. The starting line is determined by the "X" mark (or buoy) and the white flag on the committee boat.**

H. VHF COMMUNICATIONS

VHF radio communications will be maintained during a race utilizing channel 72 for communication. Radio communications may be utilized to relay information on unusual situations during races such as postponements, recalls, withdrawals, etc. However, Race Committees may not always use VHF radio so it should not be relied on as the sole means of information. Racers should not communicate with the Race Committee from the time of the Warning gun to the time of the last class start.

VII. TIME LIMIT

Regardless of time of start, the time limit for a boat in the first class to finish will expire at 1800 except as stated in the notes to the Racing Schedule. Time limit for all classes starting after the first class will be extended so as to allow all classes to have the same amount of racing time. If any yacht finishes within the time limit for her class, it is a race for her class. Yachts finishing after the committee boat has left its station should take their time and report it to the Race Committee as soon as possible.

VIII. PROTESTS

The SBCC Protest Committee operates under the Racing Rules of the US Sailing, (1997-2000) supplemented by published decisions of the US Sailing Appeals Committee. In addition, it shall hear all protests arising from violation of the Inland Rules which replace Part IV of the US Sailing rules between sunset and sunrise.

The Protest Committee will only entertain protests made in conformity to the US Sailing rules including:

- Display of protest flag
- Notification of protested yacht
- Notification of Race Committee
- Submission of written protest within 72 hours
- Citation of rule or rules allegedly infringed

Protest must be addressed to the Chairman of the Protest Committee and hand delivered or postmarked within 72 hours of the conclusion of the race in question.



SBCC RACING PROGRAM AND INSTRUCTIONS

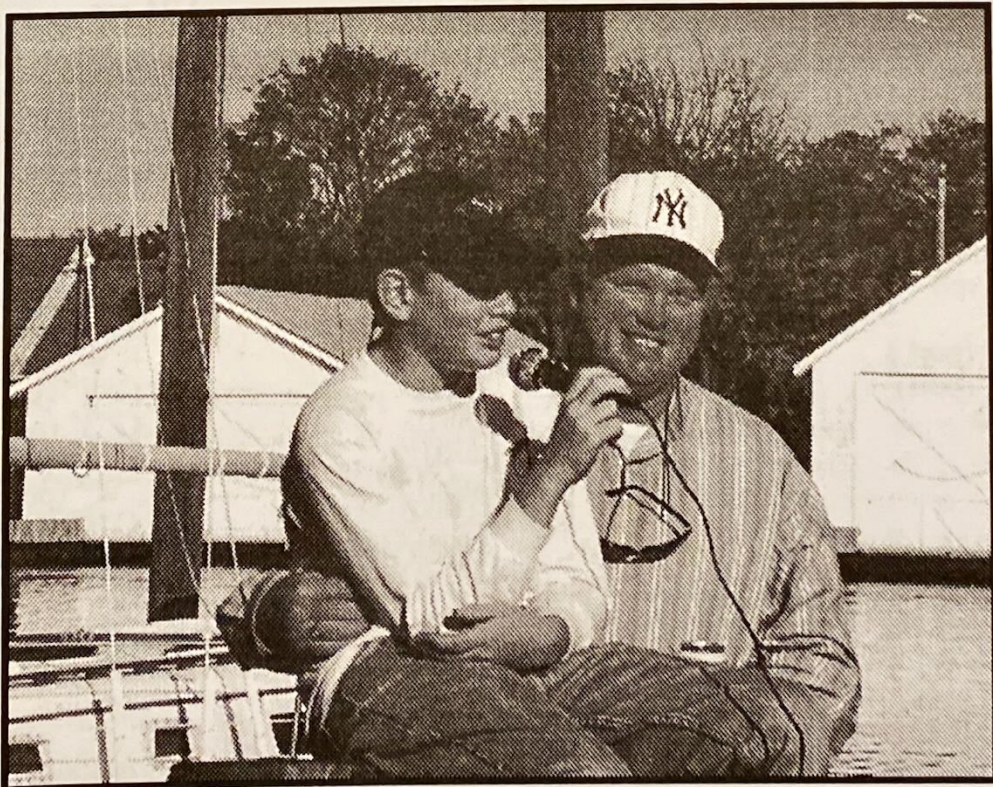
IX. SAFETY

The safety of a vessel and her crew is the sole and inescapable responsibility of the skipper, who must do his or her best to ensure that the yacht is fully found, thoroughly seaworthy, and manned by an experienced and physically-fit crew. He/she must be satisfied as to the soundness of hull, spars, rigging, sails and all gear. The skipper must ensure that all safety equipment is properly maintained and stowed, and that the crew members know where it is kept and how it is to be used. He/she must have all safety equipment required by the U.S. Coast Guard and he should have the racing equipment suggested by US Sailing. The South Bay Cruising Club disclaims any liability for the seaworthy condition or operation of a yacht, the safety of its crew, or the absence of suitable safety equipment aboard a yacht, for which the owner has sole responsibility.

It is the exclusive responsibility of each skipper to decide whether or not to start, continue, or drop out of any event. The South Bay Cruising Club does not assume any liability for the decision of any participant. Because of the increased costs of all vessels and the tendency to litigate all accidents, whether liability exists or not, the Board of Governors of the South Bay Cruising Club recommends that all owners and skippers carry liability as well as hull insurance to protect all parties from the financial consequences of an accident.

For answers to questions regarding minimum U.S. Coast Guard equipment requirements please call the following:

Coast Guard Safety Hotline
weekdays between 8am and 4pm M-F
1 -800-368-5647





1997 RACING PROGRAM - RACE COURSES

SPECIAL COURSE INSTRUCTIONS

1. When the Robert Moses Causeway is in the course, the center span must be used.
2. When the designated course is signaled to be sailed twice around, the "X" mark is a mark of the course the second time around and is to be left on the same side as the next mark of the course unless shown with an asterisk. Courses with an asterisks should not be sailed twice around.
3. For all Yacht Club Invitationals, see special Sailing Instruction for the event.

BABYLON COURSES

Start and Finish established by the Race Committee (RC) between Willets Creek and Keith Canal. If the Finish is signaled to be at the Babylon Yacht Club Dock, the RC must determine the added course distance signaled by code flag "V".

Marks: "X" an Orange or White SBCC Special Buoy
 Flashing Green No. 1 in Great Cove (G "1")
 Flashing Green No. 3 (G"3") off Bayberry Point
 Red Nun No. 6 (R"6") just East of Robert Moses Causeway
 Flashing Green No. 9 (G"9") off Oak Island Channel
 Flashing Green No. 11 (G"11") off Bay Shore

COURSE A
 3.83 nm
 Start
 G"9" (port)
 R"6" (port)
 Finish "

COURSE B
 5.63 nm
 Start
 G"9" (port)
 R"6" (port)
 X" (port)
 G"9" (port)
 Finish

COURSE C *
 4.24 nm
 Start
 R"6" (port)
 "X" (port)
 G"9" (port)
 Finish

COURSE D
 7.72 nm
 Start
 G"9" (port)
 G"1" (port)
 Finish

COURSE E
 9.52 nm
 Start
 G"9" (port)
 G"11" (stbd)
 G"3" (port)
 G"1" (port)
 R"6" (stbd)
 Finish

COURSE F *
 9.90 nm
 Start
 R"6" (port)
 G"11" (stbd)
 G"3" (port)
 G"1" (port)
 " X" (port)
 G"9" (port)
 Finish

COURSE (G) *
 3.83 nm
 Start Between Committee and (G "9")
 "x" Located off Willets or Keith Canal (STBD)
 (R "6") stbd
 Finish Between Committee Boat And (G "9")

COURSE H *
 5.57nm
 Start Between Committee Boat and (G "9")
 "x" Located off Willets or Keith Canal
 (R "6") stbd
 (G "9")
 "x" Located off Willets or Keith Canal
 Finish Between Committee Boat and (G "9")

* DO NOT SAIL TWICE AROUND



BAY SHORE COURSES

Start and Finish established by the Race Committee (RC) 1/3 nm off (south) of the Brightwaters Canal unless otherwise specified.

Marks: "X" an Orange or White SBCC Special Buoy
 Flashing Green No. 1 (G "1") in Great Cove
 Flashing Green No. 3 (G "3") off Bayberry Point
 Flashing Red Nun No. 4 (R "4") in North Channel
 Red Nun No 6 (R "6") just East of Robert Moses Causeway
 Flashing Red No. 8 (R "8") off Nicoll Point
 Flashing Green No. 9 (G "9") off Oak Island Channel
 Flashing Red No. 10 (R "10") in West Channel.
 Flashing Green No. 11 (G "11") off Bay Shore
 Flashing Green No. 35 (G "35") off Blue Point

Finish at the Babylon Yacht Club (FBYC)

COURSE A

5.77 nm
 Start
 R "6" (port)
 G "11" (stbd)
 G "3" (port)
 Finish

COURSE B

5.03 nm
 Start
 G "11" (port)
 R "4" (port)
 Finish

COURSE C

4.32 nm
 Start
 G "11" (port)
 G "3" (port)
 G "1" (port)
 G "11" (Stbd)
 Finish

COURSE D

3.34 nm
 Start
 R "10" (port)
 G "3" (port)
 Finish

COURSE E *

6.44 nm
 Start
 R "6" (port)
 G "11" (stbd)
 G "3" (stbd)
 R "10" (stbd)
 Finish

COURSE F

9.00 nm
 Start
 R "8" (stbd)
 R "4" (port)
 R "10" (stbd)
 Finish

COURSE G (Foulke)

29.29 nm
 Start
 G "9" (port)
 G "11" (stbd)
 G "3" (stbd)
 G "35" (port)
 G "11" (port)
 FBYC Finish

COURSE H

9.09 nm
 Start
 R "6" (port)
 "x" (port)
 R "6" (port)
 G "11" (stbd)
 G "3" (port)
 Finish

COURSE I

7.45 nm
 Start
 G "9" (port)
 G "1" (port)
 Finish

* DO NOT SAIL TWICE AROUND



NICOLL BAY COURSES

Start and Finish established by the Race Committee (RC) in Nicoll Bay.

Marks: "X" an Orange or White SBCC Special Buoy
Flashing Green No. 3 (G"3") off Bayberry Point
Flashing Red Nun No. 4 (R"4" NC) in North Channel
Flashing Red No. 4 (R"4"RC) in Range Channel
Flashing Red No. 8 (R"8"NP) off Nicoll Point
Green No. 9 (G"9") off Nicole Point
Flashing Red No. 8 (R"8") off West Fire Island
Flashing Red No. 10 (R"10") in West Channel
Fl Green No. 19 (G"19") off Point O' Woods
Fl QR Red No. 24 (R"24") in East Channel
Fl Green/Red EN (GR"EN") in mid Nicoll Bay
Red Nun No. 30 (R"30") in mid Nicoll Bay
Red & Green Quick Flasher EW (RG"EW") off Saltaire

COURSE A

6.15 nm
Start
R "8"NP (po r t)
R"30" (port)
Finish

COURSE B

5.96 nm
Start
GR"EN" (stbd)
R"4"RC (stbd)
Finish

COURSE C

6.56 nm
Start
R"4" RC (po r t)
R"30" (port)
Finish

COURSE D

5.58 nm
Start
GR"EN" (stbd)
R "8" NP (stbd)
Finish

COURSE E

8.16 nm
Start
R"8"NP (port)
GR"EN" (stbd)
R"24" (stbd)
Finish

COURSE F

16.90 nm
Start
G"19" (stbd)
G"9" (port)
R"10" (port)
R"4"NC" (stbd)
G"9" (port)
Finish

COURSE G

13.25 nm
Start
R"8"NP (port)
GR"EN" (stbd)
R"24" (stbd)
R"4"NC (stbd)
G"9" (port)
Finish

COURSE H (WEST ISLAND)

15.6nm
start
G"9" (stbd)
R"4"NC (port)
R"10" (port)
RG"EW" (port)
R"8" (stbd)
G"19" (port)
Finish



WATCH HILL COURSES

Start established by the Race Committee (RC) in the vicinity of the North end of the channel to Watch Hill.

Marks:

Flashing Red No. 4 (R"4"NC) in North Channel

Green No. 9 (G"9") off Nicoll Point

Flashing Red No. 10 (R"10") in West Channel

Fl. Green/Red No. EN (GR"EN") in mid Nicoll Bay

COURSE A

9.74 NM

Start

R"4" NC (port)

Finish between R"10" and Committee Boat

COURSE B

6.93 NM

Start

GR"EN" (port)

Finish between Committee boat and G "9"

HECKSHER COURSES

Start established in the vicinity of the Nicoll Point.

Marks; "x" an Orange or white SBCC Special Buoy

FL Red No. 8 (R"8"NP) off Nicoll Point

FL Red No. 4 (R"4"RC) in Range Channel

FL Green/Red EN (GR"EN") in mid Nicoll Bay

Red No. 6 (N"6"NC) in North Channel

FL Green No. 19 (G"19") off Point O' Woods

HECKSHER "A"

7.7nm

R"4" RC (port)

GR"EN"(port)

N"6" NC (port)

R"4" RC (port)

Finish

HECKSHER "B"

10.52 nm

G"19" (port)

R "4" RC (stbd)

GR"EN" (port)

N"6" NC (port)

R"4" (port)

Finish

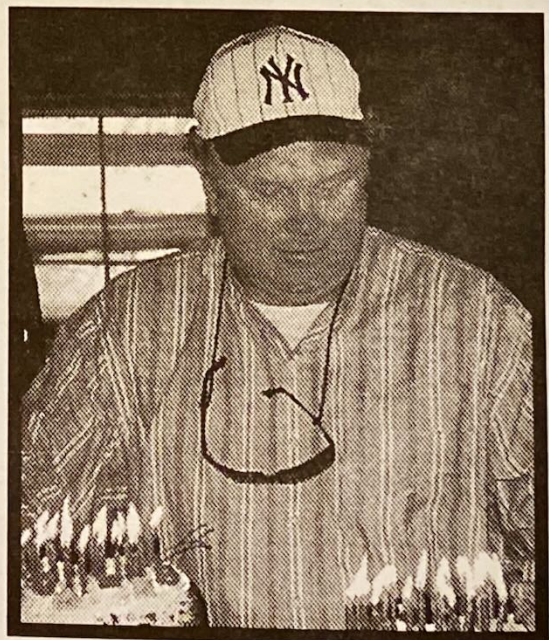
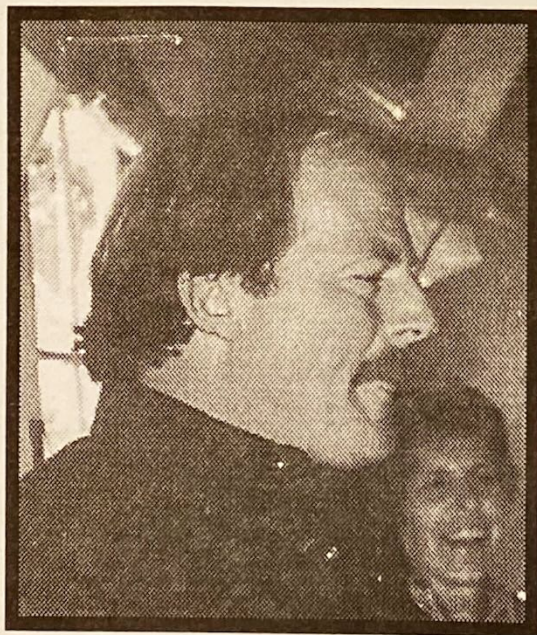


S.B.C.C. SHIPS STORE

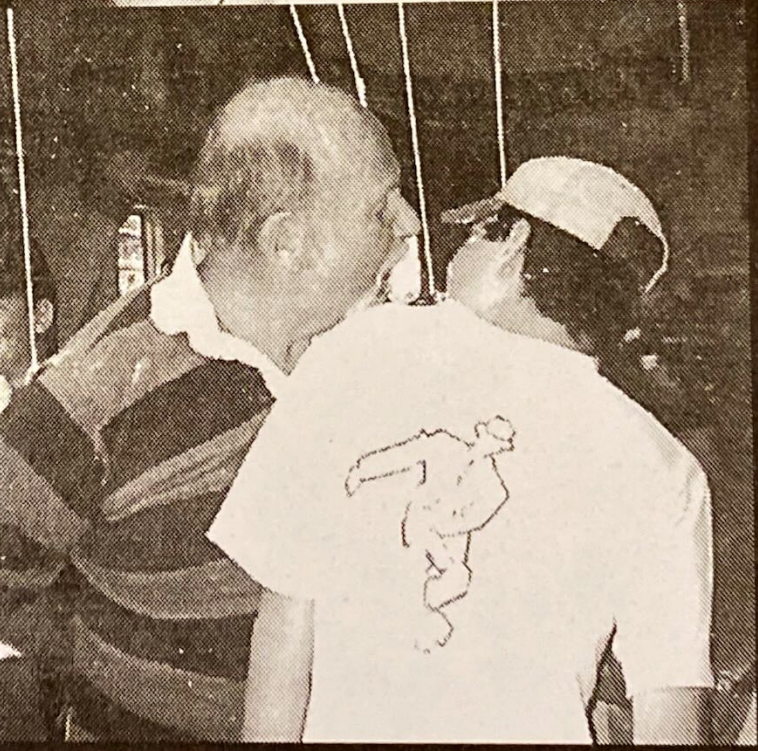
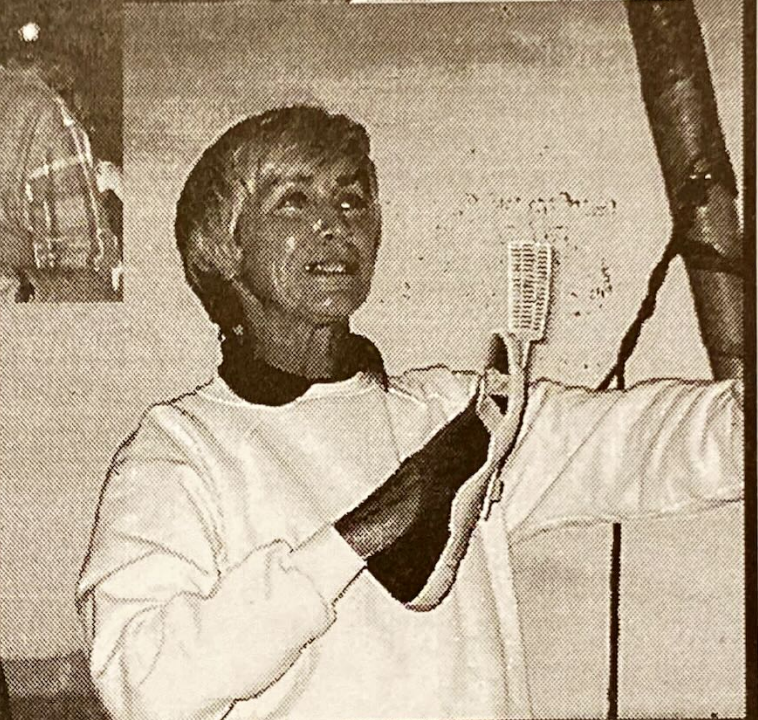
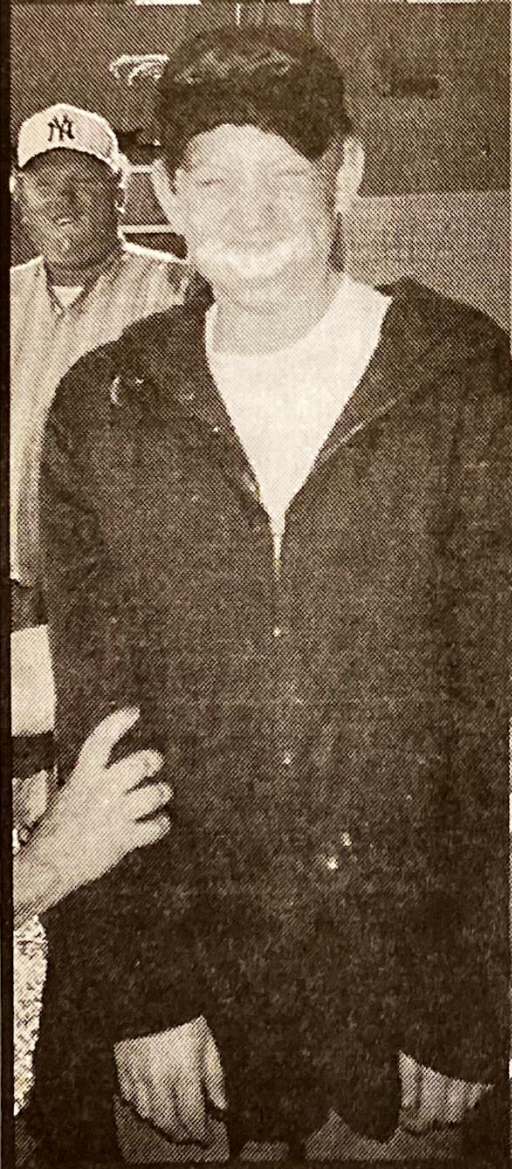
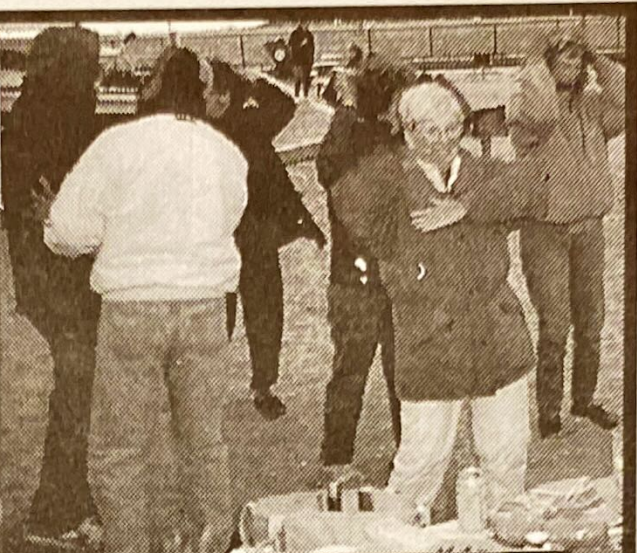
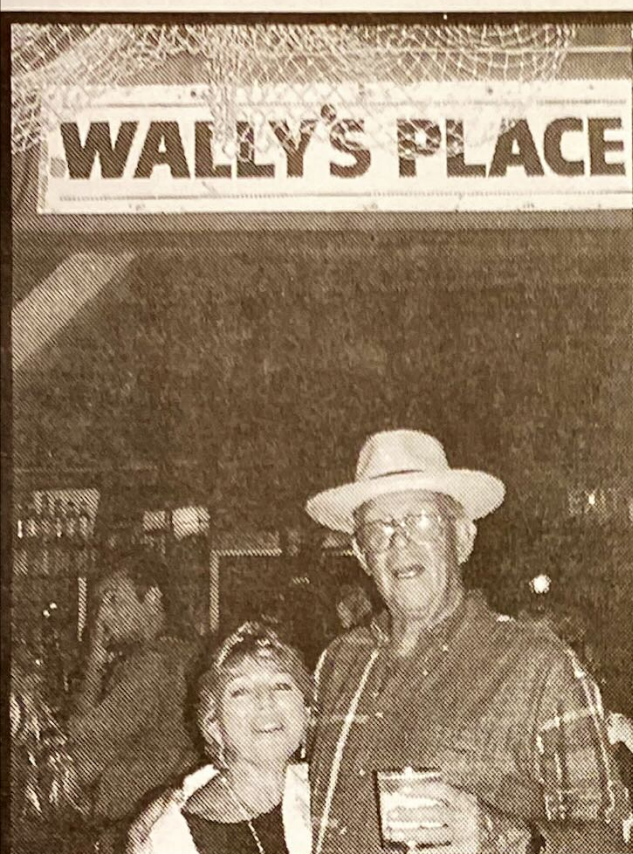
The storekeeper has the following items available to members at the price indicated. If you wish to make a purchase contact the storekeepers, Barbara Connor at 665-7266 or Judi Flett at 666-1915.

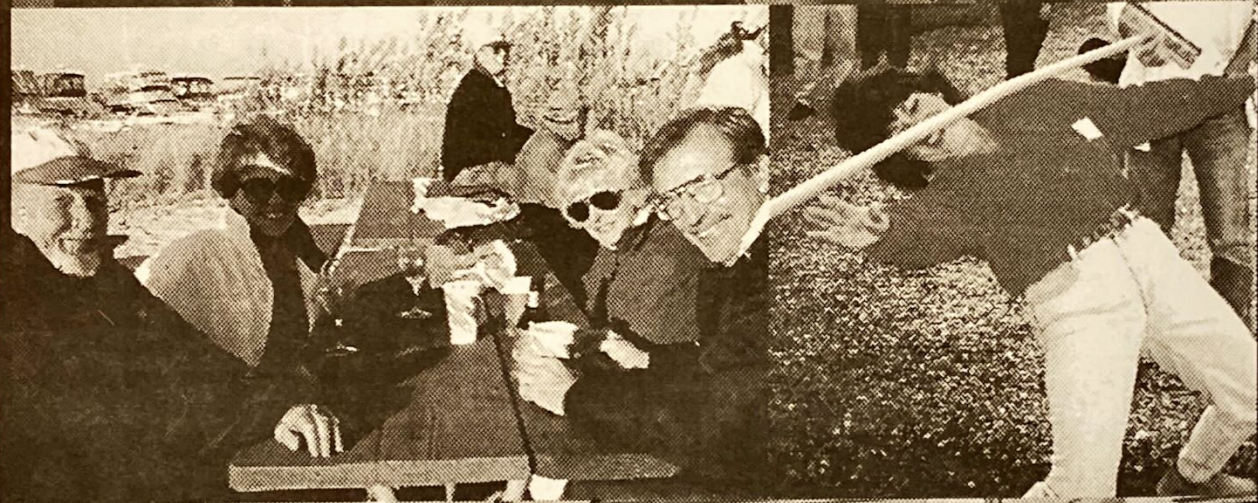
S.B.C.C. BURGEES	\$12.00
COFFEE MUGS	\$2.00
CRUISING GUIDES	\$2.50
DECALS	\$1.00
SWEAT SHIRTS	\$18.00
GOLF SHIRTS	\$16.00
TEE SHIRTS	\$9.00
FANNY PACKS	\$9.00
BASEBALL CAPS	\$6.00
CAN HUGGIES	\$3.00
S.B.C.C. TIES	\$4.00
SNACK PLATES	\$2.00

(Prices are subject to change according to suppliers prices)



Birthday Boys!







THE CRUISING YEAR IN REVIEW

One Week Cruise - from the log of Cee-J

Sunday August 11, 1996-The day dawns like any other day in paradise. There is a soft fog on a slate of glass. I wake and crawl out of my bunk and head for the cockpit for a looksee. Sandy is at my side anxiously awaiting her ride to shore. We quietly slip into the dink, loose the line and drift back. I row to shore and we take our morning walk. The world is just starting to come back to life. A few fishermen head softly out to the bay as the mist rises slowly. God, I say, I do love it so. But the world heads inexorably towards the hustle and bustle of living and we head back to the boat.

We are rafted with Njord, Carefree, and Quest and slowly the raft comes to life with the delicious smell of coffee. As we sit huddled around our cups the quiet is ruptured by the sound of Jack Nielson motoring by. After conversation back and forth he decides to raft up with us. In the style that is only Jack, he calmly motors 100 feet in front drops his anchor and backs up to the raft. A very smooth move executed perfectly. The only problem being the anchor float bobing ninety feet in front. A very tempting morsel for all the passersby to run over or pick up. Well, having Jack safely aboard, the next victim was Fenian. She is moored twenty feet off of Jack and as we make Jack fast the raft swings closer yet. Being still to far to toss a line Jack breaks out his heaving line and tosses it across. The lines are fed across and Fenian is tied fast with Zepher by her side. Well now, the gangs all here! it must be time for breakfast! And what would a raft-up be without a rousing water fight? I do believe that Carefree got the worst of it on this round with Jack coming out the winner. (I would watch out if I were you Jack).

The day is spent lounging around and enjoying a perfect summer day. One of the few days we get where we have no plans, no place in particular to be, and a whole lot of sunshine to enjoy. The one week has begun.

Cocktail hour is set for about 17:00 hours and we attempt to count heads and set the itinerary. This is to be a sort of Olympics week and (you lucky people) you get to participate. Tonight is the start of the games. The great dinghy race! Blindfolded (of course). The participants being Jack and Barbara Nielson, Corinne Conger and John Rambold, Joyce and Tom Gotard, and Joe McCormack and Ed Sowden. And they're off and running out around the other raft nearby and back with the Gotard's handily beating the pants off everyone else. I think it might have something to do with the hard bottom dinghy although they'll tell you their secret weapon was the old WD40 can to grease the oarlocks.

The next day dawns overcast and breezy. Perfect! ! Today is the race to Watch Hill and the wind is up! Race time is 9:00 am and it starts when you reach the pole at the head of the river. Kind of an informal start for you racers but we love it. Off we go with Jam-V and Tranquiliizer leading the rest. Soooooo, Where the heck is Tranquiliizer going anyway? Can you go that far across here? What does he know? What does he draw? gee, look at him go! Well, that was the last we saw of Dick until we got to Watch Hill later. Good race Dick, and remind me not to challenge you. Second place belonged to Jam-V with the rest of us bringing up the rear. Special mention must be given here to Voodoo Lady for inventing the newest tack. We call it the "what's that noise, oh! the anchor" tack. In the middle of the race their anchor came loose and dropped to the bottom. It is a miracle that they or their boat were not injured and was really a sight to behold as their boat rounded a smart 180 under full sail.

Tuesday August 14, 1996 - Rain, rain and more rain! The day dawns and continues overcast and raining. Does this keep us loyal one-weekers down? No, I say, No! This is the perfect time for a Jenga tournament! Off we go to the bar and set up the Jenga. Lady Barbara, Fenian and Cee-J provide the Jenga's and the game is on. Joe Fili and Jim Warsaw emerge victorious after several hours of competition. The rest are playing sex trivia with Aramia winning that contest. After an early dinner it's off to bed as we are off to Bellport in the morning.

Wednesday August 15, 1996-The next day dawns and the skies are overcast. The forecast is for clearing and winds from the north. Yippee! ! we're off to Bellport. We arrive midafternoon and tie up to the docks. After a walk into town and shopping and the essential stop at the ice cream parlor we called it an early night.

Thursday August 16, 1996-The day dawns misty and calm. We rouse ourselves, take one last nostalgic walk, and ready our boats for the long sail to Atlantique. 0900hours, calm, quiet, sunny....perfect. I simply love it. We drift out of the harbor and down the channel. Turn off the motor, I don't care how long it takes us to get there, I say. I set the sails and we lay in the cockpit gazing over the cabin once in a while to make sure we won't hit anything and enjoy the quiet. This is what its all about. Wait a minute, who is



One Week Cruise -(cont.)

that up ahead? It's Fenian. Let's catch up to them! Trim them sails! Ever so slowly we drift up to them and wave. OK, 1100 hours, the wind begins to wake as we pass Patchogue and aim for the channel. We pull into a bustling Atlantique, tie up, and we're off to the ocean. What a glorious site. Chrystal clear blue-green waves crash into shore and we all jump into the water like kids that have just crossed the desert. After a vigorous swim its back to the boat to get ready for lobster dinner in Ocean Beach.

Friday August 17, 1996 The day wakes as we gather on the docks for a last toast to the sun and prepare to depart. The group splits up as some have to get their boats back and prepare for the blast and others wish to stay at Atlantique one more day. As for Cee-J and Zepher we head back to the river to spend the last night. The river is quiet and we enjoy a delightful lunch at the Snapper. Friday evening is Ritchie Latorre's birthday bash and we see all who were with us once more. They are dressed differently than before but yes, they are still the same.

Saturday August 18, 1996- This is the end of the oneweek. All in all we had favorable weather and good companionship. A perfect recipe for a good time. And what a better ending than to see everyone again at the Blast. John and I hope that all that travelled with us had as good a time as we did. See you on the bay!

CASINO CRUISE LOG - Two Week cruise from the log of

Moonraker

DEPARTURE - SATURDAY JULY 6TH.- We left Great River at 8:00 A.M. and had a good sail to Smith Point Bridge with 15 knot winds behind us. Had several groundings through Quogue Canal with strong winds and shoaling. OUR TIME went ahead and radioed to all following vessels that Tiana Bay might be a poor anchorage considering the strong westerly winds. We all decided to go to Cormorant Point instead. We had a captains meeting and party on OUR TIME that evening.

SUNDAY JULY 7TH.- We all got up and had a quick cup of coffee, hoisted anchor and set sail for Shinnecock Inlet. Picked up another Club member KITIY KAY along the way. We made the inlet by 8:00 A.M. The sea was a little lumpy but everyone got out without incident. As usual we motored the ocean trip with winds on our nose. The weather was good. We did have a great sail from Montauk Point to Block Island. Dropped anchor in the Great Salt. Pond at 5:45 P.M. with all vessels accounted for.

MONDAY July 8TH- We toured Block Island with several club members as the fog rolled in over the harbor. Several of us gathered on the porch of Spring House for drinks, then met the rest later for lobster dinners at Ballards. There were two tables with 20 or more people. We had our fill and had a devil of a time getting back to our boats in the fog. Tom and Joyce knocked on the hull of a sailboat, on their way back to SILHOETTE, to borrow a hand bearing compass. Eventually finding their boat in the fog.

TUESDAY JULY 9TH- We had breakfast as a group at the Oar followed by a Captains meeting to determine departure time from Block to Fishers Island the following day. Tuesday was another foggy and rainy day at Block, but we had a fun day sight seeing ending with the group having dinner at Finns. Had a great time. Another foggy night, but not to worry, since we left our dinks tied to our boats and used the launch service. However, he had an equally difficult time locating the boats in the fog. We experienced a severe thunder and lightning storm again that evening.

WEDNESDAY JULY 10TH- We awoke this morning to blue skies and strong winds, the result of the passage of a strong front the night before. The winds were steady 15 to 20 knots with 3 to 4 foot chop. Our destination that day was West Harbor on Fishers Island, just south east of the Thames River. Half the group had to pull into Stonington since Fishers could only accommodate two vessels to a mooring. The harbor was picturesque.

THURSDAY JULY 11TH- We left Fishers Island at 9:00 A.M. for a very interesting run up the Thames River. Past the Electric Boat Yard and saw several submarines in dry dock. They look much larger out of the water than one might expect. Several other points of interest were seen on the way up the river, one of which was the U.S. Coast Guard Academy. We arrived at the American Wharf at 12:30 P.M. about two hours after the Stonington group arrived. The marina was everything we had hoped it would be. Several of us went for a swim in the pool, after which we organized a cocktail party at the picnic tables on grounds. It was quite impressive to see 14 club boats at floating docks at one time. The weather was magnificent that day. Several of the young



Two Week Cruise (cont.)

people on the cruise took advantage of the miniature golf and bumper boats opposite the marina, and we can't forget the erupting volcano which caught our attention every 20 minutes.

FRIDAY JULY 12TH- Went to breakfast at Old Tymes restaurant which was a leisurely walk from the marina, which is basically in the center of town. Later that day we learned of a severe change in the weather resulting from hurricane Bertha coming up from North Carolina. A Decision was made to stay an extra night and await the affects of Bertha as she passed threw. It proved to be a wise decision. We had severe winds with torrential rain all of Friday night and Saturday. However, the weather cleared enough for several of us to have dinner at Chelsea Landing Pub. Early that evening American Wharf provided us with free transportation to the Casino for gambling and fun. Although no one came back heavy winners, a good time was had by all.

SUNDAY JULY 14TH- We left the wharf for Hamberg Cove instead of Coecles Harbor due to losing a day to Bertha. At that point several boats left the group, due to previous commitments. It was quite a long day, hot, hazy and humid, arriving about 5:00 P.M. in the cove. We all took mooring and hit the sack early that evening.

MONDAY July 15TH- Poor weather, fog, overcast and poor visibility. If it had it had been a nice day we had planned to stay in the Cove. We left for Essex Yacht Club and took moorings in the morning. Very pleasant club members. The group toured the town of Essex and that evening dined at the "Griswald Inn". Great menu ~ someone even ordered moose. After dinner we returned to the Yacht. Club and were invited by one of the officers to watch the Weather Channel in their lounge. Later returned to our moorings by launch.

TUESDAY July 16TH- Dropped our moorings at 7:30 A.M. for Mattituck Marina. Had poor visibility down the river and was greeted with fog as we approached the mouth of the river. As there was little or no wind it turned out to be another motoring day, but eventually the sun burned the fog off and provided us with a beautiful bright, cool and dry day. Arrived Mattituck 2:00 P.M. Some took slips but a number dropped the nook in the limited anchorage near the town dock. Did some food shopping in town and visited the Tank Museum.

WEDNESDAY July 17th- Bright, dry day, with no wind to sail by. Long leg from Mattituck to Northport. Arrived 4:00 P.M., hot and muggy. Fueled up, and took moorings. No shower facilities. Great walking around town. Had dinner, some club members visited with wives and other family members.

THURSDAY JULY 18TH- Departed Northport for City Island, arriving at 11:30 A.M. which was nice since it gave us a full day to relax and enjoy the area. We had an early cocktail party on the porch of the Yacht Club, then off to town for great hamburgers at a local pub. Then we hit our favorite ice cream store.

FRIDAY JULY 19TH- Woke up Friday to rain, poor visibility and predicted thunder storms. Dropped our moorings at 11:30 A.M. in order to arrive at Hell Gate at slack tide. Trip down the East River was against strong winds and heavy chop. The weather seemed to deteriorate further as we approached the Verrazano Bridge. With severe winds and thunder storms predicted options were discussed via radio and the majority decided to stay over night in Sheepshead Bay. We arrived at Mirmar Yacht Club and took moorings just before winds 35 to 40 mph. We doubled up our mooring lines for the night. It was a restless nights sleep due to severe rocking and rolling.

SATURDAY JULY 20TH- Though the winds were still gusty the morning was clear, cool and dry. This day proved to be the icing on the cake for the cruise. Had breakfast on respective boats then off at 11:00 A.M. to the Brooklyn Aquarium. Spectacular killer whale and porpoise water show. We then went to Coney Island Playland for fun and rides. Joyce, Jean and Ronnie rode the Cyclone, while we cheered them on. Hot dogs at Nathans and retold childhood stories. Back to an invitation to a free concern at Kings Borough College of the old band sounds.

SUNDAY JULY 21ST- Awoke this morning to a calm sea after dropping our moorings at 7:00 A.M. for our final leg home. Motored sailed most of the way in the ocean, which was a comfortable passage. It was mutually decided to go into Jones Inlet instead of East Rockaway since the sea conditions were good. We all said our good byes over the radio during our run in the State Channel for our respective home ports. The end of an enjoyable cruise. Our thanks to all for everyone's input and cooperative effort which made for a very enjoyable and successful cruise.



Three Week Cruise- From the log of- Reynard

We saw heavy fog on the first three days of the cruise and experienced the usual chaos; we made a number of U-turns before we got out of the inlet and we had a close encounter with a tug and barge. Why don't they show up on radar????????? Arrived at Manasquan Inlet on day two and proceeded through the Point Pleasant Canal to the Metedeconk River for the night (at anchor)

By noon of the third day, the fog lifted and ME N THEE saw dolphins, a birthday present for Shirley. On day four, in Atlantic City, Bob Rouse took a fall and visited the Atlantic City Medical Center. We left Atlantic City one boat short as they wanted to run enough tests on Bob to give him a clean bill of health. Bob and Shirley told us to go ahead and they would catch up, which they did.

We left an overnight anchorage in Cape May, again in heavy fog, with another boat ECLIPSE, all "worshiping" Jack Levitsky and his radar. DRAGON and LADY BARBARA flew spinnakers about two thirds of the way up the Delaware until an ebb current and a south wind made it "too exciting". We encountered the first of numerous continual electrical storms in the late day from the Delaware transit through most of the cruise in the Chesapeake area. When we made Cheesecake City that evening, we found a new long bulkhead by the Bayard House and you can tie up FREE, a feature we sailors really appreciate. We met up with Jack and Barbara Nielsen and had a nice dinner at Bayard House, one of my favorite restaurants. At dawn we left; the Neilsens heading north for home and REYNARD, DRAGON and LADY BARBARA (the other Lady Barbara) headed for Baltimore. We caught the late show at the Aquarium; the jelly fish show was fabulous and the regular exhibits are nicely done. I think the Aquarium is a "must-see" if you are in the area and I am not an "aquarium" person.

On Sat., the 15th, on the 9th day of our cruise, we (DRAGON and REYNARD) left for Oxford sailing through the Knapps Narrows and LADY BARBARA for "some place else". We tied up, at the Tred Avon Yacht Club where we were joined by the Garbins and the Dunlops aboard RESISTANCE. This is a good choice of dockage in Oxford; plenty of room, showers, air conditioned building, and all for \$20 a night. There are some free moorings also. ME N THEE caught up with us, as did LADY BARBARA and we all had dinner in the Robert Morris Inn. On the 18th, RESISTANCE and LADY BARBARA headed south and DRAGON, ME N THEE and REYNARD headed for St. Michaels. On the way we spotted sea turtles and LOTS of skates. We tied up at the Miles River Yacht Club, another "good deal"; prime rib dinners for \$14.00, pool, laundry, and more.

Next stop was Chestertown where we were met by a friend with a car. We dined that night at the Harbor House on Worton Creek, a nice place with very good food and the creek is full of sailboats, a place to look into. By now I guess it sounds like I have a food-fetish. We left Chestertown and headed for the Sassafras where we anchored off Lloyd Creek. It was fine till the wind changed direction. I think it pays to take the extra time to get off the open water at night!!!!

By the time we got to Cape May, DRAGON had a list of boat problems and ME N THEE were a day behind us again so we took a lay day and saw the town Roseman's Marine will let you tie up a dinghy and they are the closest dock to town.

We had excellent sailing conditions from Cape May to Atlantic City and arrived one and a half hours ahead of time. We took a lay day to do the shows and "the tables" and left at 0800 on Thursday, the 21st for Manasquan. By noon, DRAGON'S engine died again but we were all sailing while Don took his carburetor apart. All worked out well and we were tied up at the shrimp Box by 1900, another good deal---\$20 a night or free if you have dinner there.

We left Manasquan under sail on Friday morning, tacked our way through some heavy traffic coming to and leaving New York Harbor and after a wild transit of Fire Island Inlet (wind, waves and obnoxious charter boats), we sadly said our good-byes.



1996 Racing Year in Review

Jim Reichel

Silver Bullet/Red Dog

The 1996 racing season was exciting. Many new races and a few new faces in the lead pack made it a worthwhile venture to race. It seemed that this was going to be the year to be for the Silver Bullet as it got a new smaller sister to look after....RED DOG !!! How the season would turn out, we had no idea, but we were certainly looking forward to a good year.

This year started out with the new Sprint Series. Veteran racer and committee boat master Bill Grauer, started the fleet out in a series of three short races, much to the liking of the participants. Bill heard requests for more races, but kept it at three. The Spring Twilights started much to the delight of all the racing die-hards who have been waiting all winter to find something to do on Wednesday and Thursday nights. Sailing on the bay was finally underway.

On Memorial Day, the Commissioning Day activities were already underway, but no racers were around. Seems the wind was very light and fluky and left the fleet struggling to finish. When it was all over, trophies were handed out to Frank Marinaccio in Cherry Pi for first, Bruce Kennedy in Red Dog in second, and Mike Myerson in Manage-A-Tois in third. The over 28+ fleet was dominated by Jack Saxe in Mandalay. The next few races had a light turnout, but a new event, the Double-Handed Race, brought in the crowd. This new event had one advantage. You don't need to many crewmembers. Lack of crew was no excuse not to race anymore. It was an overwhelming success. In the late spring, an amazing surprise was witnessed by SBCC members. The Watch Hill Spring Family Race actually had boats to participate in a race. It was quite the turnout. It blew like stink and turned into a wing on wing downhill drag race to the finish line. The Silver Bullet got to the finishline before the committee boat. When all the times were tallied up, first place went to Rich LaTorre's Carefree. Silver Bullet was just a second or two behind on corrected time. It was not to beat the committee boat. The next new event was the return of the Pursuit Race. A dirty bottom for us led to dustation to us by the rest of the fleet. We initiated a new rule on board....use bottom paint more frequently. Doug Davies on Amethyst was like lightning and it was good to see some cruising boats taking part as well.

The Twi-light racing was going quite well. A few new names popped up. Joe Dudek and crew on Jam V took two bullets in the first two series, proving that persistence does pay off. Ericsean (Kevin Padden), Dragon Fly (John Davis) and Bionator (Mike Goodman) all started doing really well in these series and prolonged it through the entire year. It was great to see other people winning....but we weren't going to let it be for long. It was time to haul the boat and unleash the Dog!

In July, the big races came. The Commodores Cup was a real "stemwinder". Over 35 knots of wind came in the gusts and blew a steady 30. On Silver Bullet we completed a well executed downwind jibe/knockdown/water in the cabin wipeout. Seems it is not a good idea to be adjusting the radio volume and station and cracking open a new beer at the same time on such a leg in those conditions. However, when we came back up, my beer was open, the music was louder, the boat was in one piece and we were back to 10 knots in no time. The J-27's took bullets in both divisions and everyone seemed a bit sore from the pounding the boats took going back to windward.

The next adventure was the Foulke Trophy Race. Always a favorite of the Bullet. This year was a real beauty. A drifter, an obstacle course, and a real test of the human spirit. Very few boats finished this year. I can't blame them. If our beer and food ran out, we were gone to. Lee Costelloe in Windshadow managed to beat out Doug Davies for first in the spinnaker division, and Marty Kind in his C&C 25 Sunshine swept up third. Silver Bullet was the only finisher in the non-spinnaker



Racing Year in Review (Con't)

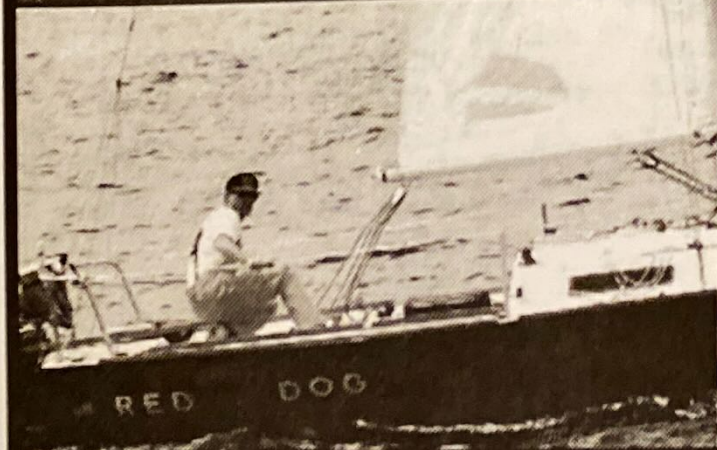
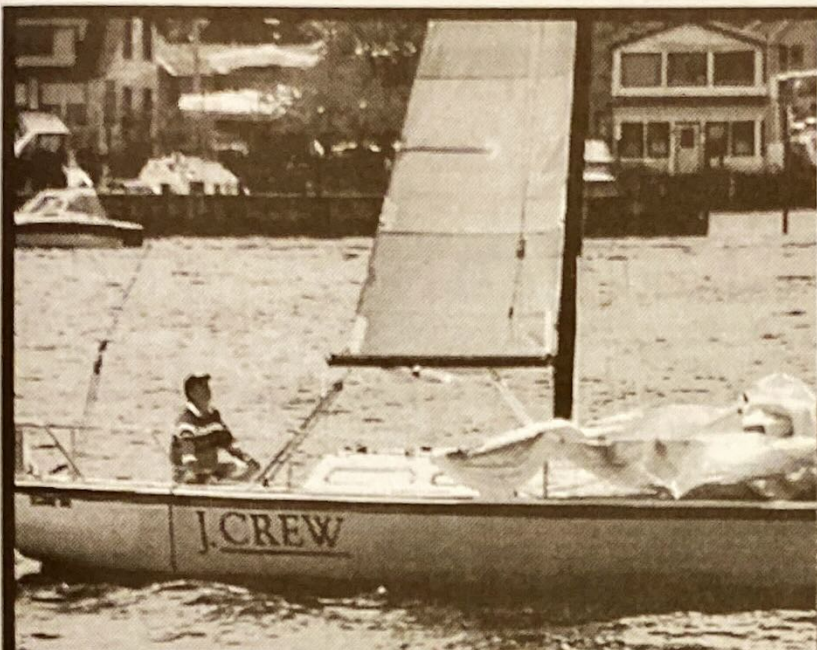
division which just finished a few minutes behind Amethyst. Those ten minutes between starts makes a big difference.

The rest of the season was pretty routine, but we noticed a new boat in the fleet. It looked like Amethyst had a twin. Sure enough, it was. Paul Rendich's Clipper made its debut and seemed real fast, at times almost too fast. The West Island Race was bringing in one of the last races of summer. Fall was just around the corner. Amethyst won the spinnaker fleet and the well attended non-spinnaker fleet was won by our Commodore, Barry Pittman. (Luck does come to the Irish)

A new race, the Whaler's Race started the Fall season off with a bang. Seems John Davis hit his head on the boom.... The whole fleet heard it. Cherry Pi took the win in this inaugural event and was certainly a race to try and come back for next year as it was fun. At this point, the two J-27's Silver Bullet and Amethyst ventured up to the North Shore to help represent the SBCC at the J-27 Level Race at the American Yacht Club. The racing was intense as usual, and our boats did real well in a 8 boat fleet. There was only one J-27 faster than us and it was from New Hampshire. (We didn't know there was even water up there) Silver Bullet lost first by 1/4 point in the series, but in our hearts we knew we sailed to a victory. Doug and crew was right behind us in third. A good showing for our boats. After a layover of a week, we headed to Manhasset Bay for the Fall series, our usual end of the year race. We managed to hold off most of the fleet until the last weekend. Doug then got his revenge on us and picked up some silver. Meanwhile the sailing was tough and mean on the bay. The Distance Race was sailed in some brutal winds and the Last Chance Race was canceled due to a Nor'Easter. Tensions were very high among the Season Championship Point contenders.

This year's championship went down to the wire. One last rescheduled race to determine the winner. The leaders were soliciting boats to come out and compete as there was no clear cut winner in each division. This race turned out to be one of the best because of what was at stake. In the end it was Lee Costelloe in Windshadow that won the title in the Spinnaker division. Bill Grauer finished second in Ailanthus and Doug Davies pulled off a third. In the Non-Spinnaker division, Kevin Padden won with Ericsean, closely followed by Joe Dudek's Jam V. Slim (Paul Rendich) took home a third place.

The last race of the year and probably the best was the Turkey Race. This event seems to get better each year and has one of the better turn-outs. For a race that was started on whim it sure has turned out to be an event. Each committee boat tries to do something better than the last. This year, Paul Rendich acquired a Charter Boat. He put a crowd on it to cheer him on and then supplied a party after the race. His efforts were outstanding and will be hard to top. Ailanthus, Ericsean, and Silver Bullet were the lead boats in the Spinnaker Division, and Dragon Fly, Broker, and Annie B took honors in the Non-Spinnaker Fleet. 17 Boat turnouts are hard to find, but this seems to be a more common sight on the bay now. I hope next year turns out this good and the weather for sailing is at least as good. It was a great year!





CRUISING AWARDS - 1996 SEASON

One Week Bay Cruise - August 6-13

Cruise Captains- "CEE-J" - John & Corine Rambold

Participants:

<i>Yacht Name</i>	<i>Sail No.</i>	<i>Captain</i>
Balance	9194	Steven & Kathryn Ossandon
Broadbill	717	Merritt & Maryellen Warsaw
Cee-J	5430	John & Corrine Rambold
Enchanted	1321	Joe & Jeanne Fili
Eramia	4495	Walter Kachel
Jam V	42281	Joseph & Annmarie Dudek
Lady Barbara	1395	Jack & Barbara Nielsen
Moonraker	621	Bob & Ronnie Martorana
Our Time	302	Tim & Phyllis Chambers
Saga II	118	Ray & Jo Rothaug
Saltheart	4463	Joe McCormack
Silhouette	1260	Tom & Joyce Gotard
Silver Mist	27	Bruce & Jean Silver
Voodoo Lady	1144	Ed & Carole Sowden
Tranquilizer	10207	Dick Daytz
Zepher	705	Art & Marilyn Feldmen
Fenian	1838	Edwin & Kathleen Simmons

Two Week Cruise - July 9-23

Cruise Captain- "Moonraker"-Bob & Ronnie Mortorana

"Our Time" - Tim & Phyllis Chambers

Participants:

<i>Yacht Name</i>	<i>Sail No.</i>	<i>Captain</i>
Counterpoint	1204	Joel & Dorothy Becker
Broadbill	717	Merritt & Maryellen Warsaw
Enchanted	1321	Joe & Jeanne Fili
Gin Ne Sai Qua	3221	George & Ginger Greenblatt
Hot Tar	901	Francis Lotter
Hydrotherapy	2484	Michael & Robin Kohl
Kariana	283	Dennis & Adriana Krug
Kitty K.	96	Wilfred & Kathleen Kleisler
Leprechaun	1161	Dennis & Barbara Connor
Moonraker .	621	Bob & Ronnie Mantorana
Our Time	302	Tim & Phyllis Chamber
Saltheart	4463	Joe Mc Cormack
Silhouette	1260	Tom & Joyce Gotard

Three Week Cruise - July 1-21

Cruise Captain- "Reynard" - Frank & Barbara Peter

Participants:

<i>Yacht Name</i>	<i>Sail No.</i>	<i>Captain</i>
Dragon	10196	Donald & Elizabeth Gardner
Lady Barbara	103	Jack & Barbara Levitsky
Me 'N Thee	111	Robert & Shirley Rouse
Reynard	99	Frank & Barbara Peter



Rendezvous Awards

Sheila Daytz Award - 1st Place- 21 Rendezvous- Cee-J - John & Corrine Rambold

2nd Place - 17 Rendezvous - Joe McCormack - Saltheart

3rd Place - 15 Rendezvous -Carefree 1855 & Fenian 1858

13 Rendezvous - Lady Barbara 1395

12 Rendezvous - Reynard

11 Rendezvous - Silver Bullet 42370
Tranquilizer 10207

10 Rendezvous - Njord 144
Silhouette 1260

9 Rendezvous - Bagheera 2016
Firstlight 110
Jam V 42281
Zepher 705

7 Rendezvous - Busman's Holiday 732

6 Rendezvous - Estelle 87
Lionhearted 1142
Shoot'n the Breeze 675

5 Rendezvous - Jubilation 100
Leprechaun 1161
Presto 103
Pzaz 254

4 Rendezvous - Kariana 283
Kathleen L.
Lorna Doone 120
Quest 24191

3 Rendezvous - Cartharsis 999
Counterpoint 1204
Emerald Seas 39
Fox 150
Jean's Star 3333
Judi Ann 68
Laurie Jean 641
Merri Mac 11
Nauti Lady 33
Saga II 118



SBCC PERPETUAL TROPHIES

COMMODORE'S CUP

1985	Firewater 11
1986	Firewater 11
1987	Blue Thunder
1988	Merry Ann
1989	White Squall
1990	Silver Bullet
1991	Amethyst
1992	Richochet
1993	Sunnsr
1994	What Me Worry?
1995	Mirage
1996	Amethyst

DEALE TROPHY

1985	Sunriser
1986	Tachyon
1987	True Love
1988	Spirit
1989	Cherry Pi
1990	Ailanthus
1991	Like, Wow!
1992	Mirage
1993	Windshadow
1994	Ailanthus
1995	Windshadow
1996	Amethyst

FOULKE TROPHY

1985	Blaze
1986	Firewater 11
1987	Amethyst
1988	Jacqueline 11
1989	Firewater 11
1990	What Me Worry?
1991	Jacqueline 11
1992	Quest
1993	Mirage
1994	Silver Bullet
1995	Mirage
1996	Windshadow

GOVERNOR'S CUP

1985	Cherry Pi
1986	Blaze
1987	Rhapsody
1988	Orion
1989	Cherry Pi
1990	Firewater 11
1991	Firewater 11
1992	Windshadow
1993	What Me Worry?
1994	What Me Worry?
1995	Mirage
1996	Amethyst

SCHNUR TROPHY

1975	Free Wind
1976	Valkyrie
1977	Argos
1978	Glas Menagerie
1979	Strawberry Fields
1980	Thunder Cloud
1981	Windswept
1982	Menger Cat
1983	Lady Bug
1992	Slim
1993	Last Fling

SMITH TROPHY

1985	Curlew
1986	Mirage
1987	Amethyst
1988	Firewater 11
1989	White Squall
1990	Firewater 11
1991	What Me Worry?
1992	Mirage
1993	What Me Worry?
1994	WhatMeWorry?
1995	Dragon Fly
1996	Slim

BROADSIDE TROPHY

*Ladies' Day Race
(First All-Female Crew)*

1972	Banshee
1973	Too Much
1974	Banshee
1975	Banshee
1976	Liebchen
1977	summerwln
1978	Firefly 11
1979	Summerwind
1980	Mandalay
1981	Banshee

CRUISING CLUB CROCK

Best Corrected Time in the

Around Long Island Race

1985	Aichemist
1986	Jacqueline II
1987	Diane
1988	Wild Rover
1989	Jacqueline II
1990	Barleycorn
1991	Barleycorn
1992	Ravin
1993	Raven
1994	Barleycorn
1995	Quest
1996	Slim

PATRICIA A. KELLY TROPHY

1985	Cherie
1986	Blue Thunder
1987	Orion
1988	Lucky Bark III
1989	Catharsis
1990	Silver Bullet
1991	What Me Worry?
1992	Absolut
1993	Dragon Fly
1994	Silver Bullet

CARY PEARSALL TROPHY

1993	Cherry Pi
1994	Mirage
1995	Mirage
1996	Allanthus

SHEILA DAYTZ TROPHY

1993	Fenian
	Saltheart
1994	Lady Barbara
1995	Saltheart
1996	Cee-J

KEN KONDOR TROPHY

1995	Jam V
1996	Jam V



CLASS CHAMPIONSHIP

SPINNAKER

1996 Windshadow - L. Costelloe
1995 Mirage - G. Schneller
1994 What Me Worry? - J. Ryan
1993 What Me Worry? - J. Ryan
1992 Mirage - G. Schneller
1991 Amethyst - D. Davies
1990 Amethyst - D. Davies

NON-SPINNAKER

Ericsean - K. Padden
Dragon Fly - J. Davis
Dragon Fly J. Davis
Slim - H. Hamstra
Drumshanbo - B. Pittman
Chanson - J. Dannels
Slim - H. Hamstra

PERPETUAL TROPHY

Cary Pearsall Trophy - Ailanthus - Bill Grauer 1121
Commodore's Cup - Amethyst - Doug Davies 421
Cruising Club Crock - Diane - Bob Schwartz 40999
Deale Trophy - Amethyst - Doug Davies 421
Foulke Trophy - Windshadow - Lee Costelloe 132
Governor's Cup - Amethyst - Doug Davies 421
Patricia A. Kelly Trophy - Silver Bullet - Lisa Cavalieri 42370
Smith Trophy - Slim - Paul Rendich - 62

Founder's Cup

Spin- Windshadow 20774
Ailanthus 1121
Non-Spin - Slim 62

Creepstakes

Under 28
Cherry Pi 14423
Red Dog - 400
Menage A'Trois - 40601
28 Plus
Mandalay -4744

West Island Race

Spin - Amethyst 421
Weed 40999
Red Dog 400
Non-Spin - Drumshanbo
10987
Dragon Fly 5861
Blaze 725

Commodore's Cup

Spin - Amethyst 421
Ailanthus 1121
Non-Spin - Silver Bullet 42370
Ericsean 4830
Sunriser 346

Great River Cup

Spin - Ailanthus 1121
Amethyst 421
Non-Spin - Cherry Pi 14423
Slim 62

Smith Trophy

Spin - Windshadow 20774
Ailanthus 1121
Non-Spin - Slim 62
Ericsean 4830

Foulke Trophy

Spin - Windshadow 20774
Amethyst 421
Sunshine 822
Non-Spin - Silver Bullet
42370

Babylon Twilight Class

Champion

Amethyst 421

Ladies Race

Silver Bullet 42370

Bay Shore Twilight Spring Series

Jam V 42281
Cherry Pi 14423
Weed 40999

Last Chance Race

Spin - Amethyst 421
Windshadow 20774
Ailanthus 1121
Non-Spin - Dragon Fly
5861
Jam V 42281

Western Twilight
Class Champion
Amethyst 421

Fun Race

Non-Spin - Dragon Fly 5861

Spring Family Race -

Carefree 1855
Silver Bullet 42370
Cee-J 5430



Sprint Series
Cherry Pi 14423
Silver Bullet 42370
Red Dog 400

Pursuit Race
Amethyst 421
Blaze 725
Drumshambo 10987

Bay Shore Twilight Summer Series

Spin - Amethyst 4217
Cherry Pi 14423
Non-Spin - Jam V 42281
Drumshambo 10987
Majic 1000

Distance Race
Spin - Ailanthus 1121
Windshadow 20774
Non-Spin - Dragon Fly 5861

Bay Shore Twilight Mid Summer Series

Spin - Amethyst 421
Weed 40999
Non-Spin - Cherry Pi 14423
Jam V 42281

Bayshore Twilight Wrap-Up Series

True Love 1518
Weed 40999
Jam V 42281

Babylon Twilight Spring Series

Ailanthus 1121
Dragon Fly 5861
Red Dog 400

Turkey Race
Spin- Ailanthus 1121
Ericsean 4830
Silver Bullet 42370
Non-Spin - Dragon Fly 5861
Brokher 759
Annie B 407

Babylon Twilight Mid Summer Series

Spin- Amethyst 421
Mirage 536
Silver Bullet 42370
Non-Spin - Sleepy Head 1015
Dragon Fly 5861
Bionater 395

Fun Race
Dragon Fly 5861

Babylon Twilight Wrap-Up Series

Clipper 136
Mirage 536
Red Dog 400
Ailanthus 1121

Babylon Twilight Summer Series

Spin - Mirage 536
Amethyst 421
Ailanthus 112
Non-Spin - Ericsean 4830
Dragon Fly 5861
Boinator 395

Babylon Twilight Fall Series

Spin - Amethyst 421
Mirage 536
Clipper 136
Non-Spin - Silver Bullet 42370
Dragon Fly 5861
Brokher 759
Sleepy Head 1015

Bay Shore Twilight Fall Series

Spin - Amethyst 421
Weed 40999
Non-Spin - Merry Ann 220
Cherry Pi 14423
Jam V 42370

Fall Family Race

Red Dog 400
Catharsis 999
Carefree 1855

Discover's Race

Spin - Ailanthus 1121
Non-Spin - Cherry Pi 14423
Clipper 185
Aerie 185

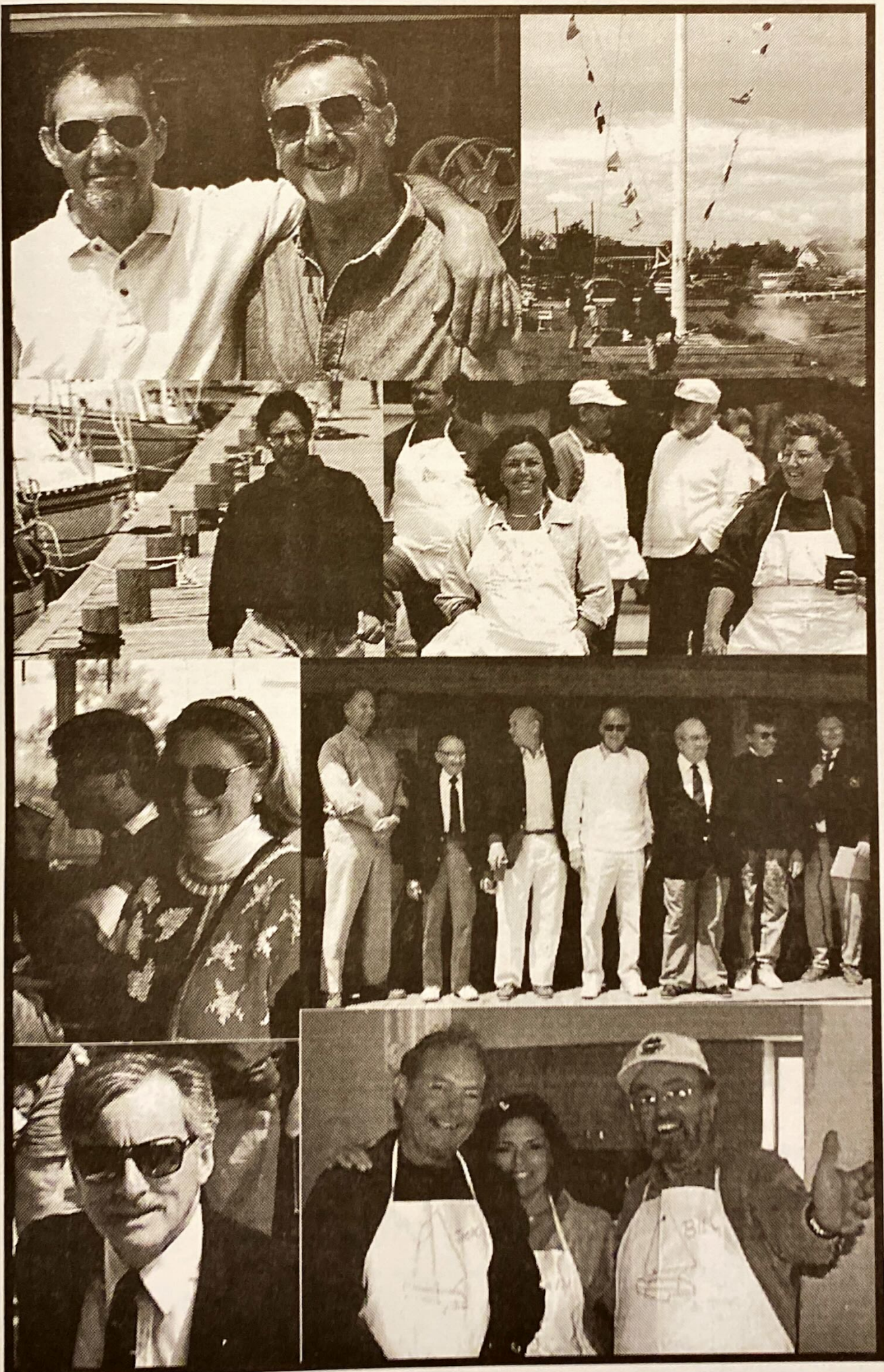
Great River Cup
Spin - Ailanthus 1121
Amethyst 421
Non-Spin - Cherry Pi 14423
Slim 62

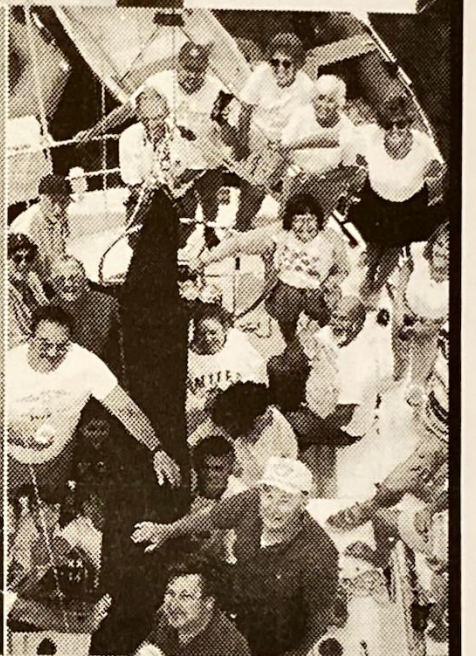
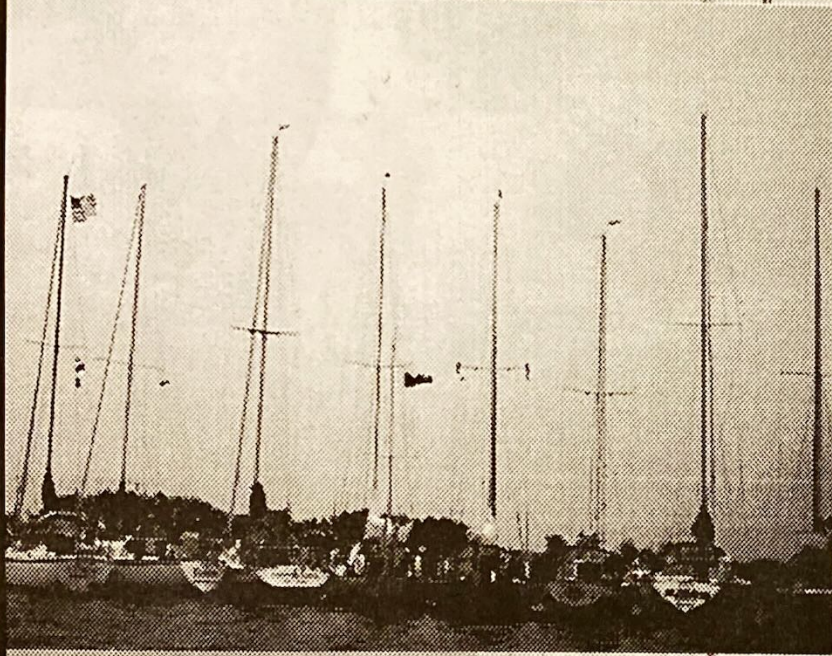
Double Handed Race

Spin - Amethyst 421
Ailanthus 1121
Mirage 536
Non-Spin - Drumshambo 10987
Cherry Pi 14423
Aerie 185

Whalers Race
Cherry Pi 14423
Silver Bullet 42281

Sprint Series
Cherry Pi 14423
Silver Bullet 42370
Red Dog 400





MEMBERS-South Bay Cruising Club-1997

LAST	FIRST	ADDRESS	YR.	PHONE	SAIL#
Arnold, Theodore, C.,		P.O. Box 1418, Sarasota, Fl.....	92		2108
Baumann, Dr. Angela	Lauria	311 Admiral's Dr. E., West Bay Shore	95	665-6722	175
Becker, Charles & Barbara,		12 West Lane, Bay Shore	79	666-0194	354
Becker, Joel & Dorothy,		139 Woodbury Rd., Hauppauge	77	234-4062	1204
Becker, Lawrence & Theresa,		32 Hemlock Lane, Bay Shore	87	666-3537	1518
Beinert, Helen,		32 Robert Street, Babylon	51h	587-5626	
Berquist, John & Linda,		231 Eaton Lane, West Islip	86	669-5993	29
Bottino, Dr. Gino & Jane,		167 Fairview Ave., Stamford, CT.	86	203 357-8964	43833
Brice, Stephan,		144 Ocean Ave., Amityville	75	264-2267	732
Brooks, Ward,		131 West Islip Rd., West Islip	90	587-4333	22643
Brous, Marilyn & Dale E.,		770 Shore Walk, Lindenhurst	86	226-2788	260
Brownyard, Brendon,		88 Gillette Ave., Bayport	76	427-9019	103
Burke, William W.,		24 Karen Place, Commack	83	499-9182	1185
Capitain, Peter & Sandra Lee,		89 Harriet Rd., N. Babylon	94	661-1783	5583
Caporale, David & Jeanne,		10 Waterside Plaza, #23B, NYC, 10010	96	212-725-7587	704
Carl, William & Ann,		RT 735 P.O. 767, Kilmarnock, Va	51c	804 435-1775	Power
Cavalieri, Lisa,		2748 Pine Ave., Ronkonkoma	89	588-2748	42370
Chambers, Tim & Phyllis,		3416 Parkway Dr., Baldwin	91	223-7317	Power
Christiansen, Lee & Margeret,		6 Birchwood Dr., Great River	81	277-6311	999
Coleman, Robert,		970 Douglas Ave., Wantagh	78	221-6893	1133
Connor, Dennis & Barbara,		1704 Asharoken Blvd., BayShore	83	665-7266	1161
Cook, William & Maryann,		41 Degan Blvd., Bay Shore	63	581-5657	220
Comman, Frederick & Joan,		12 Larkspur Dr., West Islip	83	669-6628	39
Costelloe, Lee & Noreen,		10 Hunting Hill Dr., Blue Point	91	363-8255	20774
Cresci, Robert J. & Jane,		115 The Helm, East Islip	85	277-2570	3301
Crimmins, Edmund & Glen,		62 Malone Ave., Long Beach	96	8899357	901
Crocker, Douglas & Katherine,		60 Village Line Rd., Babylon	85	587-4871	1457
Czach, Richard,		9 Cord Ave., West Babylon	88	669-7462	675
David, Robert C.,		P.O. Box 87, Islip	95		117
Davies, Anton F. & Evelyn,		5006 Plymouth Ct., New Bern, NC	72c	919 633-0848	2712
Davies, Douglas & Barbara,		88 Bacon Lane, Bay Shore	80	665-0174	421
Davis, John & Kathryn,		503 Avon Place, West Islip	83	587-9326	5861
Davis, Randy & Marilyn,		2759 Wallace Ave., North Bellmore	91	826-6983	150
Daytz, Richard,		123 Milligan La., W. Babylon	65	669-6993	10207
Delamer, Brian & Kristen,		70 Birch St., Islip	96	277-3255	90965
DeLise, Stephen W.,		5 Captains Walk, Bay Shore	73	968-5864	101
Drossos, Ted & Theresa,		47 Division Ave., East Islip	90	277-2038	509
Dudek, Joseph & Annmarie,		45 Bucket Lane, Levittown	92	731-0530	42281
Dunleavy, William & Barbara,		243 Bay View Dr., Oakdale	72	567-0594	423
Dunlop, Robert F. & Peggy,		P.O. Box 486, Belle Haven, VA.,	62		176
Dunnells, Jerry & Susan,		27 Sequams Lane, West Islip	86	661-8345	4271
Dywr, Barby,		920 Pelican Dr., New Bern, N.C.	66h	919 636-5281	3663
Eggerstedt, Fred & Lucy,		6060 Shore Blvd. S., APT. 812, Gulfport, FL	53c	813 377-0552	
Eilbeck, William & Sally,		P.O. Box 144, Babylon	88	661-1507	144
Eppig, Aileen,		153 Eaton Lane, West Islip	85	422-6032	759/P
Epstein, Dr. Jeffrey M. & Dr. Ronit,		37 Davision Lane East, West Islip	92	661-4495	1015
Ernst, Robert & Dot,		321 Great River Rd., Great River	69	227-4167	122
Farrell, Martin F. & Catherine,		31 Magnolia St., Central Islip	95	234-1309	2215
Feldman, Stan,		Box 184 L.I. Maritime Museum, W. Sayville		447-8679	
Feldman, Arthur & Marilyn,		960 Gardiner Drive, Bay Shore	70	666-5494	705
Ferguson, Jim & Donna,		39 Avon Place, Amityville	82	691-4055	57
Fili, Dr. Saverio & Jeanne,		270 Edgewater Ave., Bayport	89	472-2622	1321
Finkle, Richard & Claudine,		447 Everdell Ave., West Islip	95	661-1773	1000
Flett, Brian & Judy,		1710 Asharoken Blvd., Bay Shore	88	666-1915	68
Forman, Robert & Jacquelin,		183 West Islip Rd., West Islip	69	587-3904	50818
Forsyth, Eric,		2 Bond Lane, Brookhaven	62	286-9721	48
Freedman, Robert & Estelle,		419 Marine Lane, West Babylon	91	422-0402	30661
Fritz, William C. & Margeret E.,		15 Ridgewood Dr., Shirley	84	281-6365	4382
Garben, Robert,		3575 Wells Ave., Southold	52	765-5711	58/59

MEMBERS-South Bay Cruising Club-1997

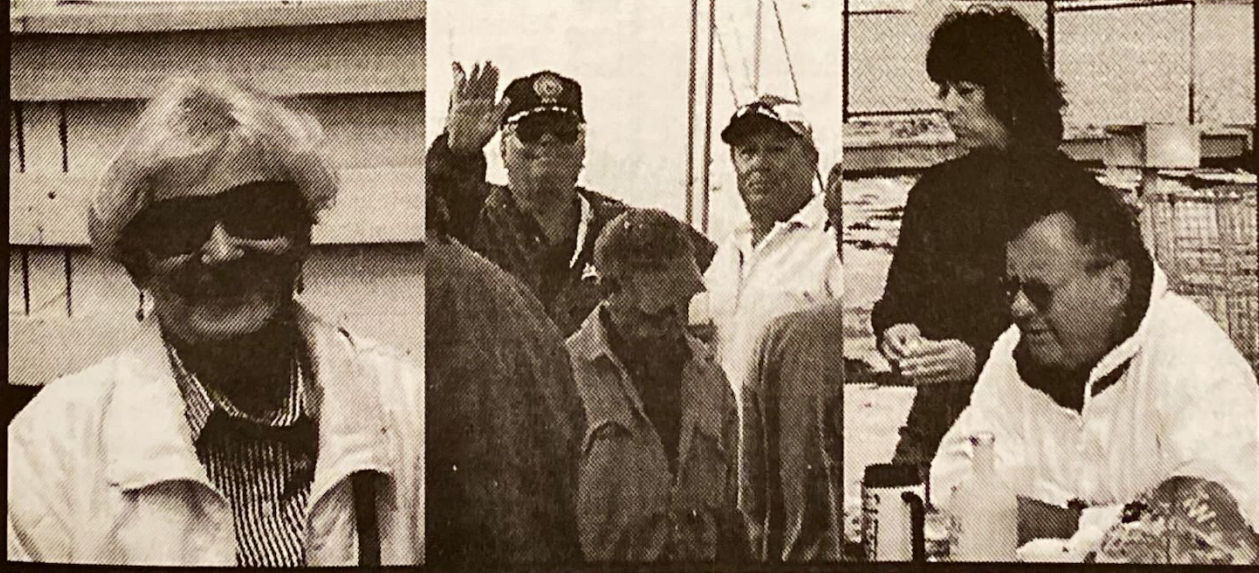
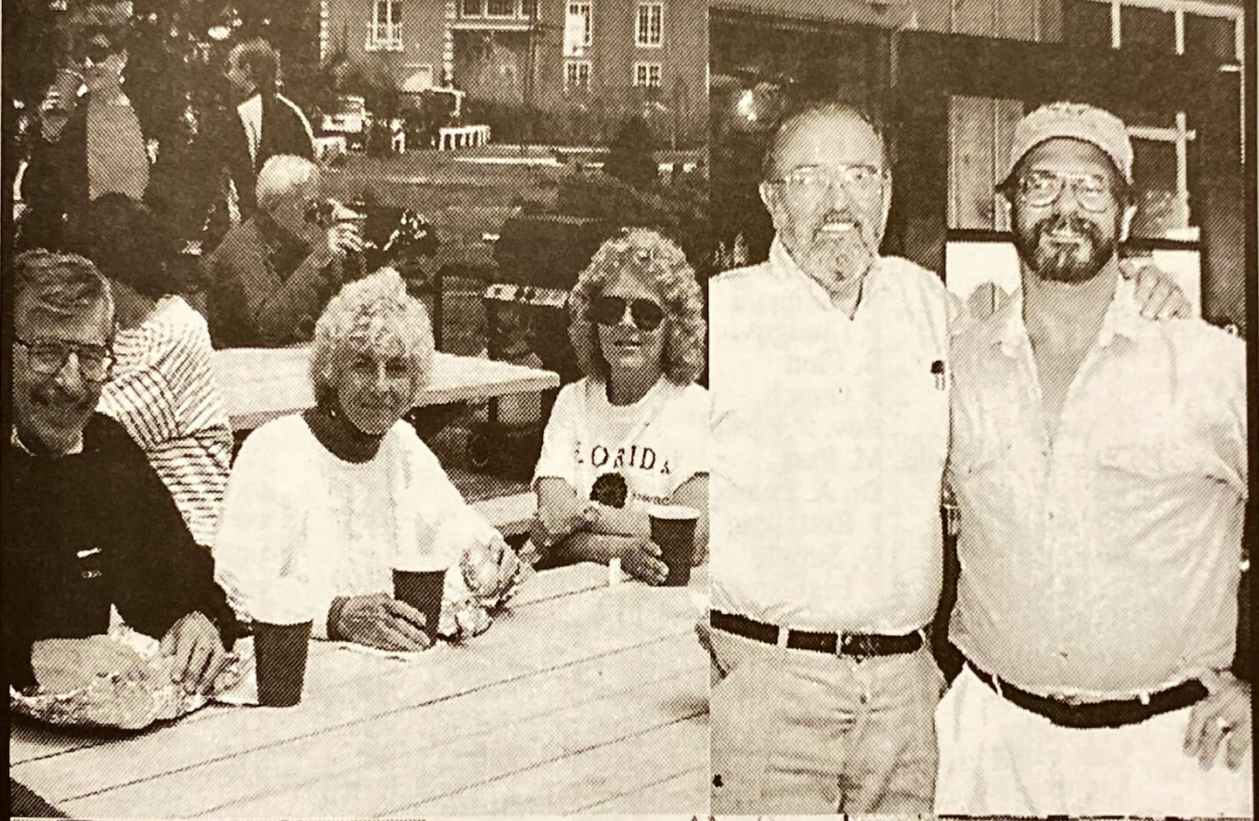
LAST	FIRST	ADDRESS	YR.	PHONE	SAIL#
Gardner, Donald & Elizabeth,		14N. Brewster Lane, Bellport	68	286-1396	10196
Gargiulo, Michael L. & Gloria,		228 Sylvan Rd., North Babylon	88	669-2321	524
Gauch, Frederick Jr. & Anita,		41 Connetquot Drive, Oakdale	65	589-1684	73
Goodman, Dr. Michael & Gail,		158 Sequams Lane West, West Islip	79	587-2550	395
Goodwin, Harold & Jean,		2819 Eastern Blvd., Baldwin	68	223-3646	151
Gorin, Dr. Martin & Joan,		180 Suydam Lane, Bayport	68	472-4963	215
Gotard, Thomas & Joyce,		372 Hickory Street, Massapequa	77	541-2805	1260
Graham, Dick,		11 Haide Place, East Islip	69	581-5412	297
Grauer, William & Vivian,		52 Andrew Ave., Islip Terrace	76	277-6212	1121
Greenblatt, George & Ginger,		19 Maryland St., Dix Hills	94	667-0819	3221
Grover, James & Mary,		185 Woodsome Rd., Babylon	58	669-6891	185
Hallam, Joseph & Marilyn,		4039 Ocean Walk, West Gilgo Beach	88	785-4496	166
Halpin, Patrick & Debra,		55 The Crescent, Babylon	90		870
Hamstra, J. Howard & Elizabeth,		1137 Riverside Dr., Salisbury, MD.	64	669-1387	62
Hangarter, Dr. Theodore,		300 Willets Lane, West Islip	60	661-0475	102
Hanrahan, Mike & Linda,		349 Windsor Avenue, Brightwaters	94	666-9449	1712
Heckel, Alfred & Stasia,		207 Captains Way, Bay Shore	56	666-6699	242
Henry, Thomas E. & Barbara,		175 S.E. St. Lucie Blvd., Apt. I-216, Stuart, Fl	73	407 287-5603	Power
Hershenhous, Jeffery & Susan,		125 Margaret Blvd., Merrick	96	378-8430	5
Hettinger, Frances,		95 Warner Road, Huntington	80	368-7455	6401
Holwell, Frank & Joyce,		72 Purdy Lane, Amityville	55	264-0524	23
Horn, Bobby,		461 Greene Ave., Sayville	69	589-2759	335
Hyer, David A. & Joann,		305 Willets Lane, West Islip	92	669-4819	12
James, Alan & Paula,		11 Meadow Lane, Brookhaven	86	286-1810	888
Johnson, David L. & Donna,		81 Jean Rd. West Islip	92	669-3331	559
Jones, Tony & Paulette,		51 Munson La., West Sayville	88	589-7248	30461
Kachel, Walter,		6 Bunny Lane, Amityville	75	598-3592	4495
Kelly, Jim & Rita Jane,		732 Chester Rd., Sayville	94	589-7258	153
Kennedy, Bruce & Melissa,		7 Bayside Ave., Amityville	75	598-0751	320/42370/400
Kimbell, William & Beverly,		129 S. Penataquit Ave., Bay Shore	88	968-6747	3333
Kind, Volker & Andrea,		504 Bay 5th Street, West Islip	72	661-4070	822
Kissenberth, Erwin & Gertrude,		117 Tropic Place, Rockledge, FL	80	407 635-8572	20/20
Kleisler, Wilfred & Kathleen,		22 Cockonoe Ave., Babylon	65	587-2899	96
Kohl, Michael & Robin,		75 Suffolk Rd, Massapequa	84	795-7725	2484
Kohl, Leo & Irene,		4721 So. Landings Dr., Ft. Myers, FL	90	941 481-1492	4430
Kohler, Richard,		P.O. Box 2626, Setauket	90	246-5470	34
Kondor, Lynn,		102 Jackson Ave., Rockville Centre	63h	764-3213	
Krug, Dennis & Adriana,		25 Harkin Lane, Hicksville	80	433-3452	283
LaBella, Richard & Diane,		282 Timber Point Rd., East Islip	74	277-4826	725
Larmor, J. Dever & Andrea,		79 Nassau Ave., Islip		277-4933	305
LaTorre, Richard & Ginny,		11 Cutter Place, West Babylon	81	321-7311	1855
Layton, Jack & Kathi,		56 Cross Rd., Oakdale	73	589-9206	625
Leddy, James & Maureen,		16 Nancy Drive, Sayville	86	589-9454	Power
Levine, Michael,		152 W. 9th St., Deer Park	97	586-0578	5627
Levitsky, Jack & Barbara,		20 King Road, Kings Park	93	724-5855	105
Lightstone, Peter & Elizabeth,		24 Braham Ave., Amityville	86	598-1833	92
Ljungqvist, Peter & Kathy,		306 A South Country Rd., Brookhaven	86	286-4840	67
Lotter, Francis,		268 Union Blvd., West Islip	91	587-8505	901
Lovito, Andrew & Kenna,		380 Robinson Rd., Greenport	80	363-6973	1142
Lowy, Larry & Diane,		9 Rutgers Road, Farmingville	83	732-6641	110
MacGill, Bruce & Ethel,		39 Stuart Ave., Amityville	65	598-1050	11
Malinka, Robert & Linda,		60 East Lake Dr., Amityville	90	598-3561	1442
Malloy, Bob & Maryellen,		412 Pacific St., Massapequa	96	541-6731	367
Manion, Ed & Karen,		35 Golf Club Circle, Manorville	97	874-4506	832
Margeson, Charles & Jane,		6 Braham Ave., Amityville	88	691-5569	203
Marinaccio, Frank & Pat,		43 Chapel Hill Drive, Brentwood	84	231-6457	14423
Martorana, Bob & Ronnie,		19 Duck Lane, West Islip	81	422-3404	621
Mattera, Jeff,		485 North Windsor Ave., Brightwaters	81	968-6127	4201

MEMBERS-South Bay Cruising Club-1997

LAST	FIRST	ADDRESS	YR.	PHONE	SAIL#
Maud, Dr. Dennis & Joyce,		14 Demarre Lane, Bayport	81	472-0636	Power
Maud, Dr. Dwight & Carolyn,		21 N. River Rd., Stuart, Fl.	78	286-1111	3814
Max, Dorothy,		11 Clearwater Ave., Massapequa	53	541-4860	1
McCormack, Joseph & Dorothy,		41 Glasgow Ave., Deer Park	89	667-7612	4463
McLoughlin, Bryan J.,		116 Paris Ct., W. Islip	97	661-1546	62
McMahon, Dr. James & Elizabeth,		3235 So. Sugarloaf Key 12C, Punta Gorta, Fl.	83		414
Milano, John A. III & Gail,		54 Dolphin La. E., Copiague Harbor	89	842-1807	422
Menger, William & Beryl,		416 Fire Island Ave., Babylon	66	587-4930	9
Messina, Gaspare & Laurie,		263 Lamoka Place, West Islip	94	321-0919	641
Meyer, Albert & Harolyn,		19 Clearwater Lane, West Islip	81	422-0891	6305
Meyerson, Michael,		8 Oakdale Ave., Oakdale	83	589-4867	40601
Miller, Edward & Jacquelyn,		27 Little East Neck Rd. So., Babylon	68	661-4862	6
Morgan, Jack,		29B. Deer Park Ave., Babylon	97	422-6531	137
Mourino, Richard & Ann,		150 Rollstone Ave., West Sayville	85	589-2275	6217
Mulle, Anthony H. & Antoinette,		42 Thompson Ave., Babylon	79	669-7969	360
Murphy, Peter & Pamela,		75 Harbour Lane, West Bay Shore	85	666-2507	1991
Murray, Earl & Trudy,		4953 Bacopa Lane #605, St. Petersburg, FL.	70c	813 864-2572	
Murray, William & Connie,		227 Middle Rd., Blue Point	83	363-7511	
Nehring, Richard & Jinie,		5108 Bucco Reef Road, New Bern, NC	64c	919 633-0619	668
Nielsen, Jack & Barbara,		136 Mariners Way, Copiague	86	842-9169	1395
Novak, Lawrence & Irene,		246 Marilyn Street, East Islip	86	227-9201	46
O'Connell, Martin & Marceil,		97 Paumanake Ave., Babylon	88	422-2216	1227
O'Connell, Thomas & Susan,		2812 Abbey Lane, Richmond, Va	79	804 360-9516	6744
Olsen, Robert & Carole,		631 Peter Paul Drive, West Islip	79	669-8371	669
Ossandon, Steven & Kathryn,		17 Lewis Circle, Babylon	94	422-2380	9194
Padden, Kevin & Loretta,		33 Litchfield Ave., Babylon	89	661-7958	4830
Pallotta, John & Sigrid,		28 Garner Lane, Bay Shore	77	665-8892	33978
Parker, Rev. Richard & Grace,		6 Bayview Ave., Babylon	68	883-1880	77
Parker, Charles & Linda,		105 Cleveland Street, Bay Shore	77	968-8632	345
Pearson, Alex & Ann,		31 Ocean Ave., Bay Shore	59c	665-0908	Power
Penn, Thomas & Linda,		25 Willow Ave, Islip	83	277-5980	225
Penny, Stephen & Edie Louise,		10 Secatogue Lane E., West Islip	85	661-5952	7700
Peter, Francis & Barbara,		24 Center Street, Sayville	91	589-3466	99
Peters, Dr. Andrew & Frances,		45 Wright Road, Rockville Centre	79	766-6766	87
Petroske, Edward & Joan,		36 Lakeview Drive, Manorville	74c	878-6126	100
Petit, Roger & Margaret,		281 Ocean Ave., Lynbrook	85	599-8390	629
Pittman, Barry & Michelle,		419 Potter Blvd., Brightwaters	83	666-3032	10987
Post, Marquerite,		44 Davison Lane East, West Islip	51c	669-5655	86
Poulos, Thomas & Bernadette,		1420 SW 53rd La. Cape Coral, FL	80	941 945-1588	146
Rambold, John & Corrine,		128 Rider Ave., Patchogue	95	758-5430	124
Ramsdell, Roger & Isabelle,		28 Walnut Ave., Rockville Centre	57c	766-2294	
Randazzo, Mark & Dorothy,		247 Belvedere Dr., Oakdale	97	567-2064	605
Reardon, Eugene,		31 West Lane, Bay Shore	63	968 5082	42894
Reichel, James,		8 E. Garfield St., Apt. IB, Bay Shore	89	665-2327	42370/400
Rendich, Paul,		Apt. 19M 185 West End Ave., N.Y., N.Y.	90	669-1403	138
Rettaliata, Jeffrey,		82 Shore Lane, Bay Shore	84	666-9341	P/88
Rettaliata, Peter & Mary,		46 Iroquois Drive, Brightwaters	87	666-9087	914
Revella, Parker & Deborah,		6 Long Leaf Lane, Medford	68	654-1297	37
Rising, Albert Jr. & Niel,		P.O. Box 616, Brightwaters	69	665-6712	Power
Roan, Frank & Pauline,		21 Cutter Pl., W. Babylon	96	422-0799	33
Rosenberg, Bud & Harriet,		6372 Palma Del Mar Blvd., #804, St., Petersburg, FL.	57c	813 867-2772	
Rothaug, Raymond & Jo,		469 Connetquot Ave., Islip Terrace	89	277-5154	190
Rottkamp, Bill,		P.O. Box 1209, White Stone, Va	74	804 435-0491	1699
Rouse, Robert Jr. & Shirley,		14 Carolee Court, West Islip	88	422-5939	
Ryzner, Robert & Joyce,		31 Buckminster Rd., Rockville Centre	85	536-9347	772
Saccio, Phillip & Donna,		870 Church Street, Bohemia	68	567-5678	
Sachnoff, Jerry & Dorothy,		86 Stillwater Ave., Massapequa	83	798-0648	212
Sadowy, Roman & Diane,		65 West 96th St., NY, NY	96	212 662-5468	303
Saganic, Romeo & Rosemary,		191 Wampum Lane, West Islip	80	587-3564	277

MEMBERS-South Bay Cruising Club-1997

LAST	FIRST	ADDRESS	YR.	PHONE	SAIL#
Sagarese,	Charles & Concetta,	1 Mast Lane, West Islip	68	587-8675	382
Sanalidro,	Ann,	82 Grassmere Ave., Oakdale	82	589-2968	
Sanalidro,	Ronald,	14 Brevoort Pl., Deer Park	82	586-7996	
Saxe,	John & Kathleen,	16 Elder Road, Islip	61	581-1291	4744
Schaefer,	Laurence & Doris,	120 Wampum Lane, West Islip	76	669-0374	308
Schaffer,	Christopher & Linda,	49 West Harrison Ave., West Babylon	94	669-3397	
Schaper,	Ron,	170 Newbrook La., Bay Shore	87	666-7367	2016
Scherel,	Sam & Madee,	7 Arbor La., Merrick	97	379-9892	
Schlitt,	James & Diane,	83 Pittsburgh Ave., Massapequa	85	541-3068	254
Schneller,	Greg & Mary,	83 Sequams Lane West, West Islip	82	587-6236	536
Schoenwald,	Maurice & Susan,	5270 Gulf of Mexico Dr., Longboat Key, FL	93	813 383-4444	116
Schulz,	Peter & Gerry,	58 Timber Point Rd., East Islip	88	277-1851	715
Schwarting,	Theodore & Mary,	108 Angyle Drive, East Islip	76	277-2013	742
Schwartz,	Dr. Julian & Marion,	1140 Crystal Dr., Palm Beach Gardens, FL	73	407 624-3048	1085
Schwartz,	Dr. Robert & Diane,	160 West Bayberry Road, Islip	80	277-0330	40999
Seidenberg,	Everett,	2950 S.E. Ocean Blvd. #59-5, Stuart, FL	55c	407 221-1507	
Sheppard,	Robert & Carole,	167 Paulanna Ave., Bayport	72c	472-0099	Power
Sherwood,	Richard & Dianne,	104 Lighthouse Road, Babylon	73	669-3568	443
Sicinski,	Joseph & Anita,	38 Woodhollow Road, Great River	82	277-4104	130
Siegler,	Skot D. & Maxine,	161 Sequams La. West, West Islip	95	422-2525	639
Silver,	R. Bruce & Jean,	1815 Brookwood Dr., Arkron, OH	95	330 867-1116	27
Simmons,	Edwin J. & Kathleen,	29 Munice Road, West Babylon	89	422-0625	1858
Smith,	Michael & Virginia,	3980 Areca Dr., St. James City, FL	77c	941 283-6395	2404
Smith,	Mrs. Janet,	159 Mulligan Rd., W. Babylon	51		
Smith,	Hale & Claire,	6 Alden Road, East Rockaway	75	593-4427	346
Snyder,	Robert,	74 Fire Island Ave., Babylon	71	734-5325	Power
Soranno,	Dr. Carl & Dr. Audrey,	27 Gamecock Lane, Babylon	92	422-8046	1682
Sowden,	Edward & Carol,	50 Mohawk Dr., North Babylon	94	667-0186	1144
Spivack,	Boris & Lois,	1300 N. River Rd., #95W, Venice, FL	68	941 497-2852	442
Stahli,	Urs & Therese,	56 Wood Ave., Amityville	97	598-2217	485
Starkie,	Robert & Susan,	17 Biltmore Blvd., Massapequa	87	797-4916	44
Stephens,	Troy & Charlene,	162 Tenth Ave., Holtsville	96	475-6928	4679
Stuhler,	Robert & June,	22 Brightwater Place, Massapequa	64	799 4457	Power
Supple,	Don,	518 Arlington Dr., Seaford	96	579-0482	090
Thayer,	Whiting & Joyce,	3164 Rolling Road, Edgewater, MD	56c	301 965-5689	45
Thomas,	William & Nancy,	75 Stillwater Ave., Massapequa	55	798-2349	170
Titus,	Walter & Louise,	43 Wingam Drive, Islip	81	581-1492	615
Tuffin,	James & Grace,	4 Grace Court, Bay Shore	86	665-8190	43
Turner,	Eugene,	84 South Carl Ave., Babylon	77	669-5271	270
Tyler,	Thomas & Joyce,	23 Biltmore Blvd. Massapeqa	83	541-2602	
Van Nostrand,	Roy & Peggy,	66 East Lake Drive, Amityville	66	691 6151	120
Van Nostrand,	David & Jeanne,	14 Christopher Ct., Babylon	79	669-8862	2808
VanTassel,	Robert & Cynthia,	3 Sumpwams Ave., Babylon	77	422-6382	24191
Van Zanten,	Martin & Marilou,	28 County Greens Drive, Bellport	89	286-9406	578
Vetter,	Robert & JoAnn,	75 Bayveiw Drive, Oakdale	89	589-8209	1181
Warsaw,	Merritt & Maryellen,	645 Hunt Lane, Manhasset	85	627-2963	717
Wheeler,	William & Ann,	19 Lawrence Lane, Bay Shore	90	666-7369	407
Wiehl,	Rudi & Rosalie,	521 Bahama Drive, Indian Harbour Beach, FL	76	407 777-9395	413
Wills,	Richard & Anna Mae,	24 Smith Street, Babylon	71		664
Woodhull,	Richard & Virginia,	277 St. Thomas Ave. Key Largo, FL	75		241
Wragge,	John,	27 Bayview Lane, Amityville	54	264-0111	35
Yaxis,	Alec & Vi,	29 Hamilton Street, Amityville	60	264-2153	125
Young,	John & Jennie,	106 West Islip Road, West Islip	51c	669-1181	1090
Zimmer Donald,	& Laurette,	3470 Homestead Ave., Wantagh	67c	785-5246	
Zimmerman,	Fred & Barbara,	33 Eaton Lane, West Islip	51h	669-4547	10



SOUTH BAY CRUISING CLUB FLEET

SAIL #	BOAT NAME	LAST NAME	RIG	HCP	LOA	DRAFT	MODEL
1	Doxie	D. Max	Trawler		36'	4'	Monk
5	Colie	J. Herchenhaus	Sloop		27'	2'7"	Tanzer
6	Sparrow	E. Miller	Sloop	210	25'	3'9"	C&C
9	Betty	W. Menger	Cat	280	19'	1'10"	Menger
10	Teezim Too	F. Zimmerman	Ketch		32'	3'6"	Dickerson
11	Merri Mac	B. MacGill	Yawl		32'	3'6"	Endeavor
12	Filabuster	D. Hyer	Sloop	194	30'	3'6"	Morgan
23	Manana	F. Holwell	Sloop		35'	3'9"	Pearson
27	Silver Mist	B. Silver	Sloop		27'	2'11"	
29	Kittiwake	J. Berquist	Sloop	186	31'1"	3'6"	Bristol
33	Nauti Lady	F. Roan	Ketch		33'	5'	Nauticat
34	A Yacht of Patience	R. Kohler	Sloop		34'	4'3"	Hunter
35	Sea Jay	J. Wragge	Sloop	221	27'	3'4"	Tartan
37	De Ja Vu	P. Revella	Sloop		31'	3'11"	Pearson
39	Emerald Seas	F. Comman	Sloop	170	31'	4'	Tanzer
43	Nereid	J. Tuffin	Sloop	260	25'	3'5"	Cape Dory
44	Liberty	R. Starkie	Sloop		26'7"	3'3"	Tanzer
45	Skylark	W. Thayer	Ketch		40'	3'	Motor Sailor
46	Wind Star	L. Novak	Sloop	176	30'	4'	Irwin
48	Fiona	E. Forsyth	Cuttr		42'	6'	Westsail
57	Stardust	J. Ferguson	Sloop	176	30'	3'4"	Tartan
58	Hettie Belle	R. Garben	Cat		18'3"	2'	Herreshoff
59	Snowgoose	R. Garben	Yawl		35'	3'10"	AlliedSeabrz
62	Slim	B. McLoughlin	Sloop	221	27'	3'4"	Tartan
62	Slim	H. Hamstra	Sloop	221	27'	3'4"	Tartan
67	Tuono	P. Ljungqvist	Sloop	228	26'11"	2'11"	O'Day
68	Judi Ann	B. Flett	Sloop		31"	3'6"	Wanderer
73	Antigua	F. Gauch	Ketch		33'3'	3'	H. G. Smith
77	Charisma	Rev. R. Parker	Sloop		32'	3'6"	Bristol
86	Yannkee Doodle	M. Post	Sloop		25"	2'6"	Bayfield
87	Estelle	Dr. A. Peters	Sloop	132	41'1"	4'6"	Bristol
88	Mystique	J. Rettaliata	Sloop	152	35'5"	3'9"	Bristol
90	Kristeki	D. Supple	Sloop		28'	3'9"	Hunter
92	Bocket	P. Lightstone	Trawler		34'	3'	Mainship
96	Kitty K.	W. Kleisler	Sloop		25'	2'	MacGregor
99	Reynard	F. Peter	Sloop	202	30'	3'6"	Wanderer
100	Jubilation	E. Petroske	Sloop	120	40'	5'	Hunter
101	Wings	S. DeLise	Ketch		45'	5'4"	Gulfstar
102	Last Fling	Dr. T. Hangarter	Sloop	230	28'	2'2"	Kelt
103	Lighthorse	B. Brownyerd	Sloop		31'10"	7'	Melges
105	Lady Barbara	J. Levitsky	Cuttr		30'	4'	Newport
110	First Light	L. Lowy	Sloop		30'	4'	Newport
116	Susy-Q	M. Schoenwald	Sloop	176	22'	4'	J-22
117	Mother Goose	R. David	Sloop		35'2"	6'3"	Trident
120	Lorna Doone	R. Van Nostrand	Sloop	192	33'	3'	S&S
122	Sea Witch	E. Ernst	Schnr	228	32'	2'10"	Herrman
124	Cee-J II	J. Rambold	Ketch		42'	5'0"	Whitby
125	Vi	A. Yaxis	Ketch	235	28'	3'5"	H-28
130	Shangri-La	J. Sicinki	Sloop		40'	5'	Endeavor
138	Clipper	P. Rendich	Sloop	123	27'	5'	J-27
144	Njord	W. Eilbeck	Sloop	130	37'	4'3"	Tartan
146	Second Edition	B. Poulos	Sloop	218	29'9"	4'	Watkins
150	Fox	M. Davis	Sloop	202	30'	3'6"	Waderer
151	Good Wind	H. Goodwin	Sloop		31'1"	3'6"	Bristol
153	Adrienne	J. Kelly	Sloop		30'3"	3'6"	Pearson
166	Papillion	J. Hallam	Sloop	192	30'	4'	Laguna
170	Second Wind	W. Thomas	Sloop	208	28'	2'11"	Soveral

SOUTH BAY CRUISING CLUB FLEET

SAIL #	BOAT NAME	LAST NAME	RIG	HCP	LOA	DRAFT	MODEL
175	None	A. Baumann	Sloop		28'	3'	Morgan
176	Resistance	R. Dunlop	Sloop	192	30'	3'6"	Wanderer
185	Aerie	J. Grover	Sloop	176	28'	3'11"	Tartan
190	Saga II	R. Rothaug	Sloop		32'2"	4'2"	O'Day
203	Shadow	C. Margeson	Sloop		41'	4'2"	Morgan
212	Puffin	J. Sachnoff	Sloop	230	25'4"	1'9"	Irwin 10/4
215	Vera	Dr. M. Gorin	Sloop		26'	3'6"	Grampain
220	Merry Ann	W. Cook	Sloop	175	27'	4'	Soverel
225	Moondance	T. Penn	Sloop	210	25'	4'3"	C&C
241	Wink	R. Woodhull	Sloop		18'	2'2"	Cape Dory
242	Falcon	A. Heckel	Sloop	150	35'5"	3'9"	Bristol
254	Pzaz	J. Schlitt	Sloop		30'	3'6"	O'Day
260	Pursuant	M. Brous	Sloop	176	35'	3'9"	Pearson
263	Constellation	Dr. J. Bogan	Cutter	234	30'	3'8"	Island Packet
270	Independence	E. Turner	Sloop	221	27'	3'4"	Tertan
277	Adria	R. Saganic	Sloop	221	27'	3'4"	Tartan
283	Kariana	D. Krug	Sloop	171	34"	4"	Irwin
297	Aeolus	D. Graham	Sloop	200	30'	3'6"	Wanderer
303	Dragon Fly	R. Sadowy	Cutter		37'	2'8"	Prout Cat.
305	Incredible	J. Larmor	Sloop	220	30'	2'4"	Bombay Xpress
308	Cu Mara	L. Schaefer	Sloop		33'	4'5"	Endeavor
320	Glas Menagerie	B. Kennedy	Sloop	196	31'	3'3"	Corvete
335	Colleen	B.Horn	Sloop		27'	1'7"	Irwin
345	Char-Lynn	C. Parker	Sloop	149	34'5"	4'3"	Hunter
346	Sunriser	H. Smith	Sloop	238	22'5"	2'	Tanzer
354	Becky	C. Becker	Sloop		30'	3'6"	O'Day
360	Wild Blue II	A. Mulle	Ketch	238	30'	4'	Allied
367	Second Wind	B. Malloy	Sloop		19'2"	3'3"	O'Day
382	Don Quixote	C.Sagarese	Sloop		28'	4'	Newport
395	Bionator	Dr. M. Goodman	Sloop	179	29'	3'3"	C&C
400	Red Dog	B. Kennedy	Sloop	176	22'6"	3'10"	J-22
400	Red Dog	J. Reichel	Sloop	176	22'6"	3'10"	J-22
407	Annie B	W. Wheeler	Sloop	227	24'	4'	C&C
413	Karma	R. Wichl	Sloop	176	35'	3'9"	Pearson
414	Tattoo	Dr. J. McMahon	Sloop	124	37'	4'3"	Tartan
421	Amethyst	D. Davies	Sloop	123	27'	4'9"	J-27
423	Sea Dream	W. Dunleavy	Sloop		28'	4'2"	Newport
442	Wide Thyme	B. Spivack	Sloop	221	27'	3'4"	Tartan
443	Whisper	R. Sherwood	Sloop		29'9"	3'4"	Bristol
485	Petite Swiss	U. Staehli	Sloop		22'	1'8"	O'Day
509	Sugar'N Spice	T. Drossos	Sloop	228	25'	2'8"	US Yacht
524	Stardust	M. Gargiulo	Sloop	198	27'6"	3'6"	Mirage
536	Mirage	G. Schneller	Sloop	210	26'	4'	Pearson
559	Yanqui	D. Johnson	Sloop	207	26'2"	4'	Pearson
578	Clepsydra	M. Van Zanten	Sloop		25'	3'	Kelt
605	Williwaw	M. Randazzo	Sloop		30'	4'	Ericson
615	Spirit	W. Titus	Sloop	250	26'	3'10"	Bristol
621	Moonraker	B. Martorana	Sloop	158	35'5"	3'9"	Bristol
625	H.S. Kathleen L	J. Layton	Ketch		44'	4'8"	Brewer
629	Witch Craft	R. Pettit	Sloop		22'	2'	Hunter
639	Gator	S. Siegler	Sloop	176	22'	4'	J-22
641	Laurie Jean	G.Messina	Sloop		30'	3'10"	Catalina
664	Patrica Ann	R. Wills	Cat		18'	1'10"	Herreschoff
668	Sanderling	R. Nehring	Sloop		33'	3'6"	Swiftsure
669	Kittiwake	R. Olsen	Cutter		37'	4'	Hunter
675	Shoot'n the Breeze	R. Czach	Sloop	180	35'	4'	Halberg Rassy
704	Quetzal	D. Caporale	Sloop	210	25'1"	4'3"	C&C
705	Zepher	A. Feldman	Sloop	191	29'9"	3'6"	Bristol
712	Mistress	J. Jeffers	Sloop		27'	3'3"	Hunter

SOUTH BAY CRUISING CLUB FLEET

SAIL #	BOAT NAME	LAST NAME	RIG	HCP	LOA	DRAFT	MODEL
715	Runaway Too	P.Schulz	Sloop	245	24'	2'	Seafarer
717	Broadbill	M. Warsaw	Sloop		30'	3'6"	Wanderer
725	Blaze	R. LaBella	Sloop	175	30'	4'4"	C&C
732	Busman's Holiday	S. Brice	Sloop	120	40'	4'11"	O'Day
742	Friendly Persuasion	T. Schwarting	Sloop	185	30'	4'	Newport
759	Brokher	A. Eppig	Sloop	210	25'	4'	C&C
772	Decision	R. Ryzner	Sloop	181	30'	4'3"	Hunter
822	Sunshine	V. Kind	Sloop	210	25'	3'8"	C&C
832	Therapy	E. Manion	Sloop		25'	3'5"	Catalina
870	Alone At Last	P. Halpin	Sloop		34'	3'10"	Catalina
888	Outlaw James Gang	A. James	Sloop	159	32'2"	4'2"	O'Day
901	Hot Tar	E. Crimmons	Sloop		28'	4'4"	Albin
901	Hot Tar	F. Lotter	Sloop		28'	4'4"	Albin
914	Kittiwake	P. Rettallia	Sloop	207	26'	4'	Pearson
917	Atsa Nysa Too	Dr. C. Soranno	SLoop	144	37'	4'6"	Beneteau
999	Catharis	L.Christiansen	Sloop	187	30'	4'	Irwin
1000	Magic	R. Finkle	Sloop	207	26'	4'	Pearson
1012	Never Again II	R. Colombo	Sloop	120	40'	5'5"	Hunter
1015	Sleepy Head	Dr. J. Epstien	Sloop	180	29'11"	5'	Islander
1061	Dauntless	W. Lapp	Sloop	262	26'	2'4"	Polaris
1085	Wandelaar	Dr. J. Schwartz	Ketch	168	42'4"	5'3"	Pearson
1090	Courtesan	J. Young	Yawl		42'5"	5'	C&C
1121	Ailanthus	W. Grauer	Sloop	210	26'	4'	Pearson
1133	Antares II	R. Coleman	Sloop	179	31'	3'11"	Pearson
1142	Lion Hearted	A. Lovito	Sloop	150	34'	4'3"	Catalina
1144	Voodoo Lady	E. Sowden	Sloop		27'	4'5"	Hunter
1157	Huntress	R. Rose	Sloop	171	24'	4'	J-24
1161	Leprechaun	D. Connor	Sloop	198	30'	3'6"	Wanderer
1181	Dragon's Den	R. Vetter	Sloop		34'4"		Island Packet
1185	Anjin	W. Burke	Sloop	198	29'9"	3'9"	Bristol
1204	Counterpoint	J. Decker	Sloop	180	30'5"	4'4"	Pearson
1227	Kickin Back	M. O'Connell	Sloop		34'	4'6"	Tartan
1260	Silhouette	T. Gotard	Sloop	193	33'	3'5"	Swiftsure
1321	Enchanted	Dr. S. Fili	Sloop		30'	3'8"	Island Packet
1395	Lady Barbara	J.Nielsen	Ketch	180	37'	4'6"	Endeavor
1442	Ranger	R. Malinka	Sloop		25'	3'6"	Cape Dory
1457	Firewater II	D.Crocker	Sloop	210	25'	4'6"	C&C
1518	True Love?	L. Becker	Sloop	258	22'	1'8"	O'Day
1682	Windfall I	Dr. C. Soran	Sloop		26'	2'4"	Pearson
1699	Patience	B. Rottkamp	Sloop		22'	1'8"	Catalina
1712	Summer Breeze	M. Hanrahan	Sloop		28'	3'	Irwin
1855	Carefree	R. LaTorre	Yawl	190	35'	3'9"	Allied
1858	Fenian	E. Simmons	Sloop		29'9"	3'6"	Bristol
1991	Peter Pam	P. Murphy	Sloop		22'6"	3'6"	Tanzer
2016	Bagheera	R. Schaper	Sloop	164	40'	4'	Bristol
2215	Pilgrim Wind	M. Farrell	Sloop		22'	1'5"	Helsen
2404	Yellowbird	M. Smith	Sloop	130	40'	4'9"	Crusader
2712	Carolina	A. Davies	Sloop	200	30'	3'6"	Wanderer
2801	Phantom	T. Arnold	Sloop		25'	2'6"	O'Day
2808	Gliding Gull	D. Van Nostrand	Sloop	196	31'	3'3"	C&C
3221	Gin Ne Sai Quoi	G. Greenblatt	Sloop		32'	4'3"	O'Day
3301	Quest	R. Cresci	Sloop	215	33'	4'	Morgan
3333	Jean's Starr	W. Kimbell	Sloop	179	30'7"	4'	Tanzer
3663	Candy Bar	B. Dwyer	Sloop		31'6"	3'3"	Corvette
3814	Jungtrau	Dr. D. Maud	Cutter		38'	3'	Krogen
4382	Yesterday's Dream	W. Fritz	Sloop		27'	3'6"	Tartan
4201	Soverain	J. Mattera	Sloop		32'	3'6"	Bristol
4679	Windlass	T. Stephens	Sloop		30'	3'10"	Catalina
4271	Chanson	J. Dunnells	Sloop	194	29'11"	3'6"	Morgan

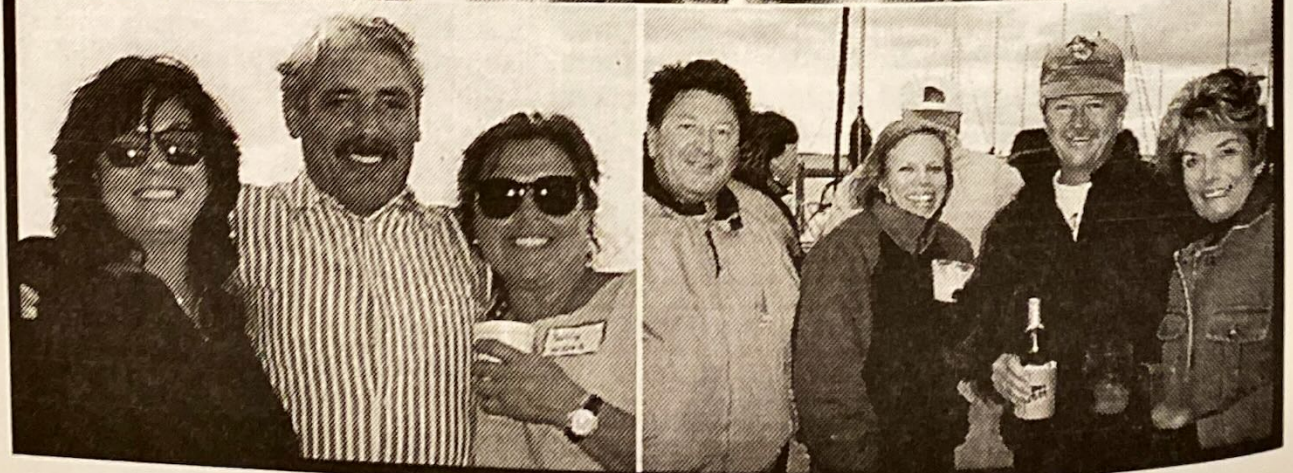
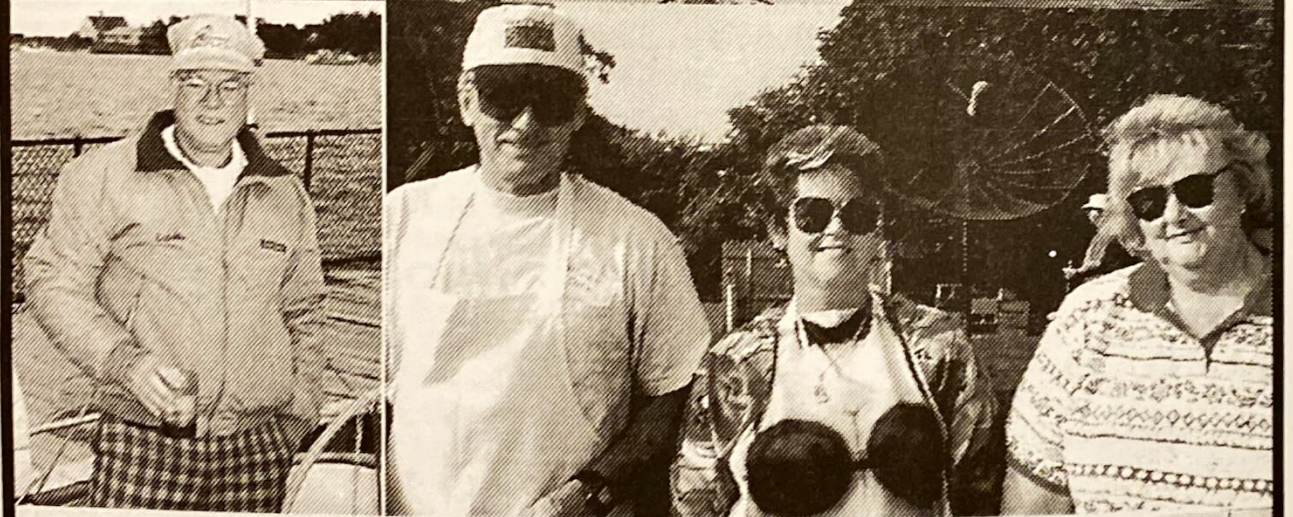
SOUTH BAY CRUISING CLUB FLEET

SAIL #	BOAT NAME	LAST NAME	RIG	HCP	LOA	DRAFT	MODEL
4430	Serene Irene	L. Kohl	Sloop		28'	3'	Irwin
4463	Salthart	J. McCormack	Sloop	200	27'	4'	Catalina
4495	Eramia	W. Kachel	Sloop	186	32'	3'5"	Irwin
4744	Mandalay	J. Saxe	Sloop	196	30'	3'6'	Wanderer
4830	Ericsean	K. Padden	Sloop	195	30'		Ericson
5583	Southern Comfort	P. Capitain		225			
5627	Wounded Knee	M. Levine	Sloop		30'	4'	Catalina
5861	Dragon Fly	J. Davis	Sloop	210	25'	4'	C&C
6217	Lady Ann	R. Mourino	Sloop	215	27'	3'5"	Catalina
6401	Presto	F. Hettinger	Sloop		27'	3'9"	Catalina
6744	Lucky Bark III	T. O'Connell	Sloop	210	25'	4'	C&C
7700	Absolut	S. Penny	Sloop	168	25'11"	5'	S-2
9194	Balance	S. Ossandon	Sloop	185	29'5"	4'	Hunter
10196	Dragon	D. Gardner	Sloop		35'	3'9"	Pearson
10207	Tranquilizer	R. Daytz	Sloop	149	38'	3'8"	Morgan
10987	Drumshanbo	B. Pittman	Sloop	155	35'	4'11"	Erickson
14423	Cherry Pi	F. Marinaccio	Sloop	210	25'	3'10"	C&C
20774	Windshadow	L. Costelloe	Sloop	132	34'7"	5'3"	C&C
22643	Like Wow!	W. Brooks	Sloop	174	25'2"	4'2"	Kirby
24191	Quest	R. Van Tassel	Sloop	118	42'9"	4'8"	Tartan
30461	J. Crew	T. Jones	Sloop	171	25'2"	4'2"	Capri 25
30661	Magic Dragon	R. Freedman	Sloop	109	39'7"	4'9"	C&C
33978	Sigrid	J. Pallotta	Sloop	124	37'	4'3"	Tartan
40601	Menage A'Trois	M. Meyerson	Sloop	210	24'6"	4'3"	Mark 25
40999	Weed	R. Schwartz	Sloop	135	27'	4'11"	Tartan
42281	Jam V	J. Dudek	Sloop	135	35'5"	4'6"	Hunter/legend
42370	Silver Bullet	B. Kennedy	Sloop	123	27'6"	4'11"	J-27
42370	Silver Bullet	J. Reichel	Sloop	123	27'6"	4'11"	J-27
42894	Manatuck	E. Reardon	Yawl	190	35'	3'10"	Allied Seabrze
43833	Ravin'	Dr. G. Bottino	Sloop		43'	5'6"	Tripp
50818	Jacqueline IV	R. Forman	Sloop		42'9"	4'9"	Hinckley

POWER

Power	Alibi	A. Rising	Power				
Power	Annette Too	A. Eppig	Crusr		36'	3'6"	Chris Craft
Power	Compass Rose	J. Leddy	Trawl		43'	4'	Albin
Power	Dori	R. Snyder	Power				
Power	Doxie	D. Max	Trawl		36'	4'	Monk
Power	Joyden	Dr. D.Maud	Trawl				
Power	Our Time	T. Chambers	Trawl		40'	4'	Mar. Trade
Power	Ranger	T. Henry	Trawl		42'	4'4"	Bristol
Power	Salty	B. Brownyard	Power				
Power	Sea Glass	J. Rettaliata	Power				
power	Widgeon	W. Carl	Power				
power	First Light	R. Stuhler	Power				
power	Dragon	M. Kohl	Power				





YACHT	SAIL#	OWNER	YACHT	SAIL#	OWNER
A Yacht of Patience	34	R. Kohler	Dauntless	1061	W. Lapp
Absolut	7700	S. Penny	De Ja Vu	37	P. Revella
Adria	277	R. Saganic	De La Mer	90965	B. Delamer
Adrienne	153	J. Kelly	Decision	772	R. Ryzner
Aeolus	297	D. Graham	Destiny	2700	J. French
Aerie	185	J. Grover	Don Quixote	382	C. Sagarese
Ailanthus	1121	D. Grauer	Doxie	1 Power	D. Max
Alibi	Power	A. Rising	Dragon	10196	D. Gardner
Alone At Last	870	P. Halpin	Dragon Fly	5861	J. Davis
Amethyst	421	D. Davies	Dragon Fly	303	R. Sadowy
Annette Too	Power	A. Eppig	Dragon's Den	1181	R. Vetter
Annie B	407	W. Wheeler	Drumshanbo	10987	B. Pittman
Antares II	1133	R. Coleman			
Antigua	73	F. Gauch	Emerald Seas	39	F. Comman
Atsa Nysa To	917	C. Sorano	Enchanted	1321	J. Fili
			Eramia	4495	W. Kachel
Bagheera	2016	R. Schaper	Ericsean	4830	K. Padden
Balance	9194	S. Ossandon	Escape	6305	A. Meyer
Becky	354	C. Becker	Estelle	87	A. Peters
Betty	9	B. Menger			
Bionator	395	M. Goodman	Falcon	242	A. Heckel
Blaze	725	R. LaBella	Fantasea	3807	G. Dennison
Blue Heron	119	T. Nehring	Fenian	1858	E. Simmons
Broadbill	717	M. Warsaw	Filabuster	12	D. Hyer
Brokher	759	A. Eppig	Fiona	48	E. Forsyth
Bucket	92	P. Lightstone	Firewater II	1457	D. Crocker
Busman's Holiday	732	S. Brice	Firewood	Power	B. Sheppard
			First Light	Power	R. Stuhler
Candide		S. Schevel	First Light	110	L. Lowy
Candy Bar	3663	B. Dwyer	Fox	150	R. Davis
Carefree	1855	R. LaTorre	Friendly Persuasion	742	T. Schwarting
Carolina	2712	A. Davies			
Catharis	999	L. Christiansen	Gator	639	S. Siegler
Cee-J II	124	J. Rambold	Gin Ne Sai Quoi	3221	G. Greenblatt
Chanson	4271	J. Dunnells	Glas Menagerie	320	B. Kennedy
Char-Lynn	345	C. Parker	Gliding Gull	2808	D. Van Nostrand
Charisma	77	R. Parker	Good Wind	151	H. Goodwin
Cherry Pi	14423	F. Marinaccio			
Clepsydra	578	M. Van Zanten	H.S. Kathleen L.	625	J. Layton
Clipper	138	P. Rendich	Hettie Belle	58	R. Garben
Colie	5	J. Herchenhous	Hot Tar	901	E. Crimmons
Colleen	335	B. Horn	Hot Tar	901	F. Lotter
Compass Rose	Power	J. Leddy	Huntress	1157	R. Rose
Constellation	263	J. Bogan	Hydrotherapy	2484	M. Kohl
Counterpoint	1204	J. Becker			
Courtesan	1090	J. Young	Incredible	305	J. Larmor
Cu Mara	308	L. Schaefer	Independence	270	E. Turner
			Irish Clan	344	D. Dean
Da Capo	6401	F. Hettinger			

YACHT	SAIL#	OWNER	YACHT	SAIL#	OWNER
J. Crew	30461	T. Jones	Never Again II	1012	R. Colombo
Jacqueline IV	50818	R. Forman	Nevermore II	299	W. Ludlum
Jam V	42281	J. Dudek	Njord	144	W. Eilbeck
Jean's Starr	3333	W. Kimbell	None	175	A. Baumann
Jolly Jack	168	J. Hollis	Our Time	Power	T. Chambers
Joyden	Power	D. Maud	Outlaw "James Gang"	888	A. James
Jubilation	100	E. Petroske			
Judi Ann	68	B. Flett			
Jungfrau	3814	Dr. D. Maud	Papillon	166	J. Hallam
			Patience	1699	B. Rottkamp
Kariana	283	D. Krug	Pato Loco	92	P. Lightstone
Karma	413	R. Wiehl	Patrica Ann	664	R. Wills
Kittiwake	29	J. Berquist	Petite Swiss	485	U. Staehli
Kittiwake	669	R. Olsen	Peter Pam	1991	P. Murphy
Kittiwake	914	P. Rettaliata	Phantom	2801	T. Arnold
Kitty K.	96	W. Kleisler	Pilgrim Wind	2215	M. Farrell
Kristeki	90	D. Supple	Pinata	5657	B. Jacobs
			Puffin	212	J. Sachnoff
Lady Ann	6217	R. Mourino	Pursuant	260	M. Brous
Lady Barbara	105	J. Levitsky	Pzaz	254	J. Schlitt
Lady Barbara	1395	J. Nielsen	Presto	6401	F. Hettinger
Last Fling	102	T. Hangarter			
Laurie Jean	641	G. Messina	Quest	3301	R. Cresci
Leprechaun	1161	D. Connor	Quest	24191	R. Van Tassel
Liberty	44	R. Starkie	Quetzal	704	D. Carorale
Lighthorse	103	B. Brownyard	Quicksilver	1983	J. Montiel
Like Wow!	22643	W. Brooks			
Lion Hearted	1142	A. Lovito	Ranger	1442	R. Malinka
Lorna Doone	120	R. Van Nostrand	Ranger	Power	T. Henry
Lucky Bark III	6744	T. O'Connell	Raven	50046	G. Bottino
			Ravin'	43833	G. Bottino
Magic	1000	R. Finkle	Red Dog	400	B. Kennedy
Magic Dragon	30661	R. Freedman	Red Dog	400	J. Reichel
Manana	23	F. Holwell	Resistance	176	R. Dunlop
Manatuck	42894	E. Reardon	Restless	20	P. Daytz
Mandalay	4744	J. Saxe	Reynard	99	F. Peter
Merry Ann	220	W. Cook	Roguary	1227	M. O'Connell
Me'N Thee	111	B. Rouse	Runaway Too	715	P. Schulz
Menage A'Trois	40601	M. Meyerson			
Merri Mac	11	B. MacGill	Saga II	190	R. Rothaug
Mirage	536	G. Schneller	Salthart	4463	J. McCormack
Moondance	225	T. Penn	Salty	Power	B. Brownyard
Moonraker	621	B. Martorana	Sanderling	668	R. Nehring
Mweedn	5112	W. Flanagan	Sea Dream	423	W. Dunleavy
Mystique	88	J. Rettalita	Sea Glass	Power	J. Rettaliata
			Sea Jay	35	J. Wragge
Nauti Lady	33	F. Roan	Sea Witch	122	R. Ernst
Nereid	43	J. Tuffin	Second Edition	146	B. Poulas
			Second Wind	170	W. Thomas

YACHT	SAIL#	OWNER	YACHT	SAIL#	OWNER
Second Wind	367	B. Malloy	Windependent II	172	W. Gogots
Serenade	41	C. Avalos	Windfall I	1682	C. Soranno
Serene Irene	4430	L. Kohl	Windshadow	20774	L. Costelloe
Shadow	203	C. Margeson	Wings	101	S. Delise
Shangri-La	130	J. Sicinki	Wink	241	R. Woodhull
Shoot'n the Breeze	675	R. Czach	Witch Craft	629	R. Pettit
Sigrid	33978	J. Pallotta	Wounded Knee	5627	M. Levine
Silhouette	1260	T. Gotard			
Silver Bullet	42370	B. Kennedy	Yankee Doodle	86	M. Post
Silver Bullet	42370	J. Reichel	Yanqui	559	D. Johnson
Silver Mist	27	B. Silver	Yellowbird	2404	M. Smith
Slim	62	B. McLoughlin	Yesterday's Dream	4382	W. Fritz
Slim	62	H. Hamstra			
Skylark	45	W. Thayer	Zepher	705	A. Feldman
Sleepy Head	1015	J. Epstien			
Snowgoose	59	R. Garben			
Solitude	432	C. Schaffer			
Soverain	4201	J. Mattera			
Sparrow	6	E. Miller			
Spirit	615	W. Titus			
Stardust	57	J. Ferguson			
Stardust	524	M. Gargiulo			
Summer Breeze	1712	M. Hanrahan			
Sunchaser	32	J. Schnell			
Sunriser	346	H. Smith			
Sunshine	822	V. Kind			
Susy-Q	116	M. Schoenwald			
Tattoo	414	J. McMahon			
Therapy	832	E. Manion			
Tranquilizer	10207	R. Daytz			
True Love?	1518	L. Becker			
Tuono	67	P. Ljungqvist			
Teezim	10	F. Zimmerman			
Vi	125	A. Yaxis			
Voodoo Lady	1144	E. Sowden			
Vera	215	M. Gorin			
Wandelaar	1085	J. Schwartz			
Wanderlust	115	R. Holzmacher			
Weed	40999	R. Schwartz			
Whisper	443	R. Sherwood			
Wilde Thyme	442	B. Spivack			
Widgeon	Power	W. Carl			
Wild Blue II	360	A. Mulle			
Williwaw	605	M. Randazzo			
Windlass	4679	T. Stephens			
Wind Star	46	L. Novak			



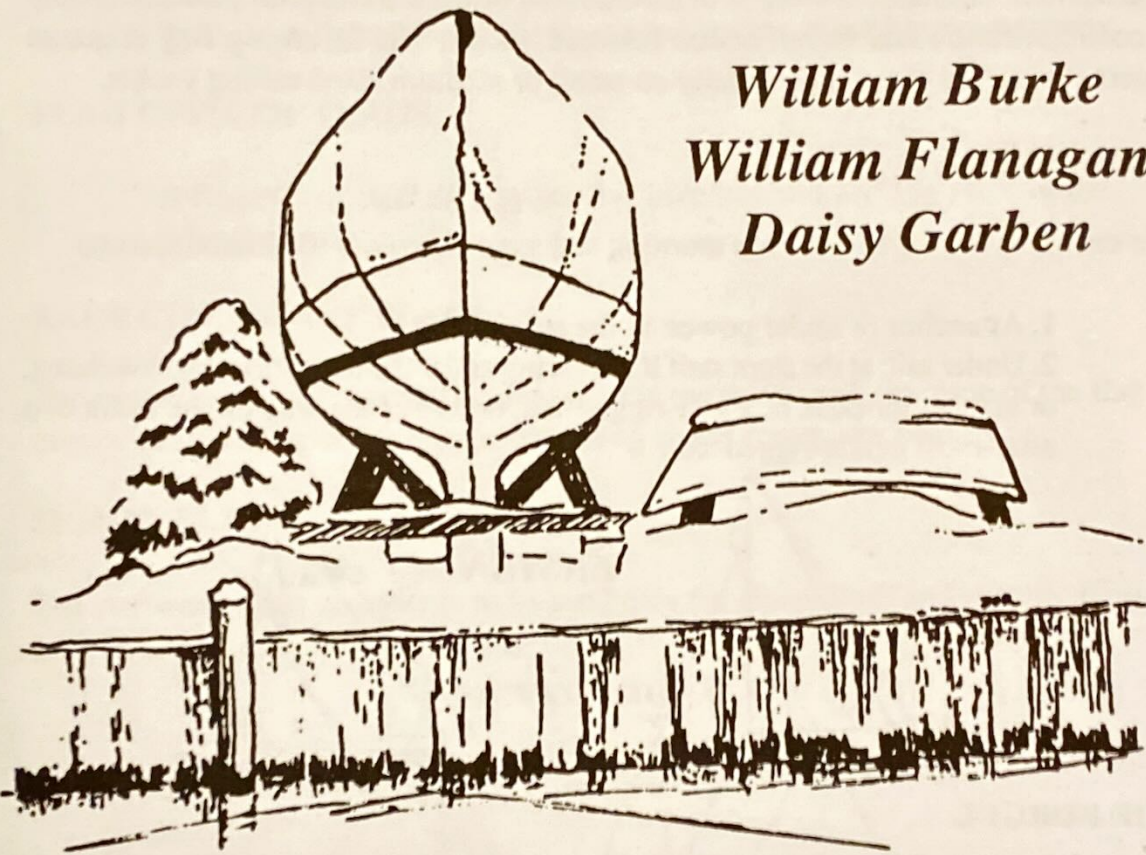
MEMBERS' ZIP CODES

Arkon, OH	44308	Kings Park	11754
Amityville	11701	Lawrence	11559
Babylon	11702	Levittown	11756
Baldwin	11510	Lindenhurst	11757
Bay Shore	11706	Lonboat Key, FL	33548
Bayport	11705	Lynbrook	11563
Belle Haven, VA	23306	Manorville	11949
Bellmore	11710	Manhasset	11030
Bellport	11713	Massapequa	11758
Blue Point	11716	Massapeqa Park	11762
Boca Raton, FL	33496	Mastic	11950
Bohemia	11716	Medford	11763
Boonton, NJ	07005	Merrick	11566
Brentwood	11717	Miami, FL	33139
Brightwaters	11718	Middle Island	11953
Brookhaven	11719	New Bern, NC	28560
Cape Coral, FL	33904	North Babylon	11703
Captiva, FL	33924	North Bellmore	11710
Center Moriches	11934	North Merrick	11566
Central Islip	11722	Northport	11768
Commack	11725	Oakdale	11769
Copiague	11726	Oceanside	11572
Copiague Harbor	11726	Palm Beach Gardens	33418
Coram	11727	Patchogue	11772
Croton On-Hudson	10520	Plainview	11803
Dataw Island, SC	29920	Point Lookout	11569
Deer Park	11729	Port Washington	11050
Delray Beach, FL	33445	Punta Gorta, FL	33955
Dix Hills	11746	Richmond, VA	23233
East Islip	11730	Riverhead	11901
East Patchogue	11772	Rockledge, FL	32956
East Rockway	11518	Rockville Centre	11570
Edgewater, MD	21037	Salisbury, MD	21801
Encinatis, CA	92024	Sarasota, FL	34236
Farmingville	11738	Sanabel Island, FL	33957
Fort Lauderdale, FL	33326	Sayville	11782
Fort Meyers, FL	33919	Seaford	11783
Fort Pierce, FL	32935	Setauket	11733
Fort Salonga	11768	Shirley	11967
Freeport	11520	Southold	11971
Gilgo Beach	11702	St. James	11780
Great River	11739	St. James City, FL	33956
Greenport	11944	St. Petersburg, FL	33418
Gulfport, FL	33707	Stamford, CT	06903
Harrison, ME	04040	Stormville	12582
Hauppauge	11788	Stuart, FL	34996
Hayes, VA	23072	Tierra Verde, FL	33715
Hicksville	11801	Venice, FL	34293
Holbrook	11741	Vero Beach, FL	32963
Holtsville	11742	W. Babylon	11704
Huntington	11743	Wantagh	11793
Indian Harbor, FL	32937	West Babylon	11704
Islandia	11723	West Bay Shore	11706
Islip	11751	West Gilgo	11702
Islip Terrace	11752	West Hempstead	11552
Key Largo, FL	33037	West Islip	11795
Kilmarnick, VA	22482	West Sayville	11796
		Whitestone, VA	22578



IN MEMORIAM

*William Burke
William Flanagan
Daisy Garben*



*Not all regret: the face will shine
Upon me, while I muse alone;
And that dear voice, I once have known,
Still speak to me of me and mine:*

Tennyson 1892



FLAGS AND SHAPES

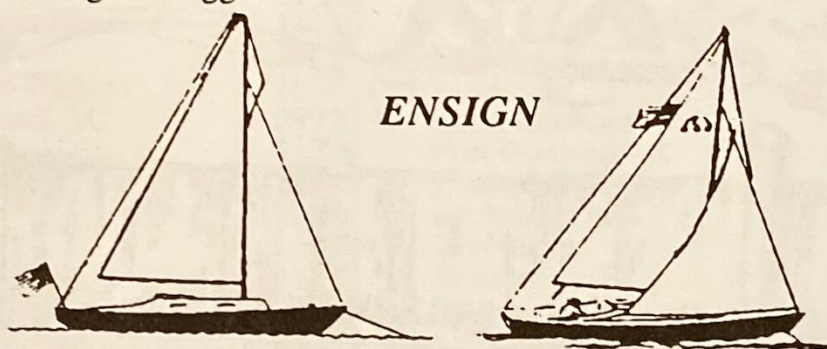
Flag Etiquette

The correct display of flags, signals, and ensigns is one of the more obvious marks of a yachtsman. This code is steeped in the tradition of the sea and promotes uniformity in communication and identification between yachts. The following flag etiquette covers the signals that are used daily on small or medium sized sailing yachts.

THE ENSIGN

The ensign is displayed between morning and evening colors (0800 and sunset)

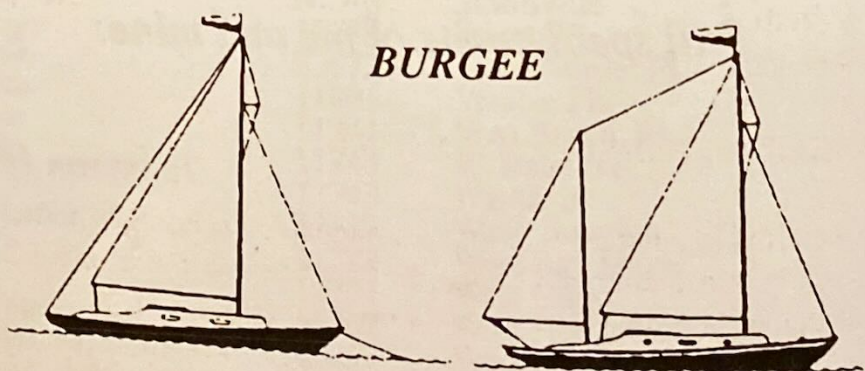
1. At anchor or under power: at the stern staff.
2. Under sail: at the stern staff if not racing and if the boom does not overhang, or at the after-peak of a gaff-rigged sail; or 2 / 3 of the way up the leach of a after-most genoa-rigged sail.



THE BURGEE

The club burgee is displayed whenever the ensign is displayed, but may also be displayed separately, between morning and evening colors, or by day and night, while at anchor or under way on:

1. The masthead of single-masted yachts.
2. The forward masthead of 2-masted yachts.
3. The burgee should be replaced with a suitable wind indicator while racing.



AT ANCHOR OR UNDERWAY



FLAG ETIQUETTE (Cont.)

THE PRIVATE SIGNAL

The owner's private signal may be displayed by day and night on:

1. The masthead of single-masted yachts in place of the burgee.
2. At the after masthead of two masted yachts, at anchor or underway.

FLAG OFFICER' FLAGS

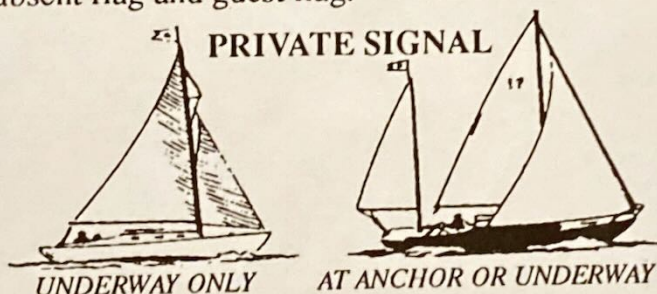
A flag officer shall display his flag both day and night in place of his private signal.

RACE COMMITTEE FLAG

The race committee flag shall be displayed at the main truck, in place of the flag otherwise there displayed. only while acting as the committee boat.

SIGNAL FLAGS

The starboard main spreader is to be used only for signal flags and specific flags, such as owner absent flag and guest flag.

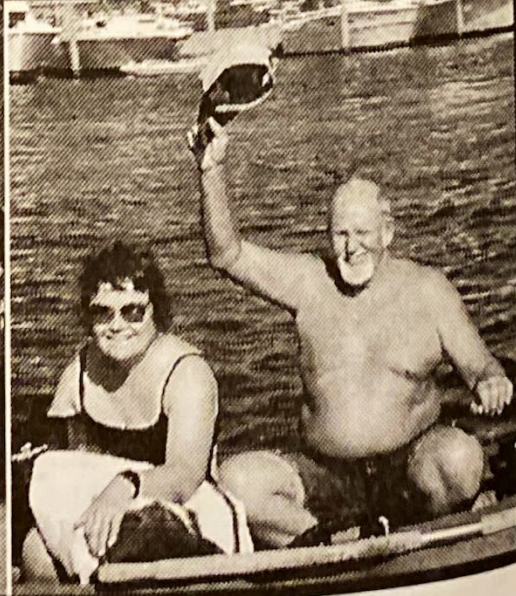
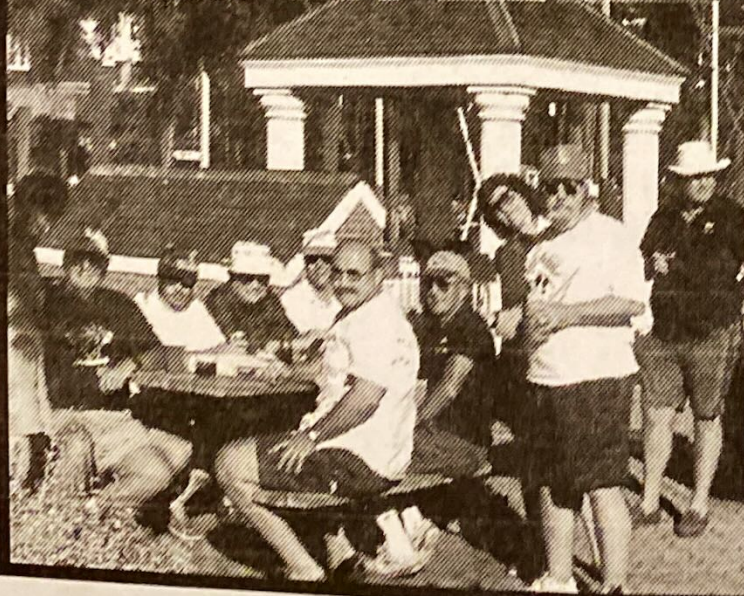


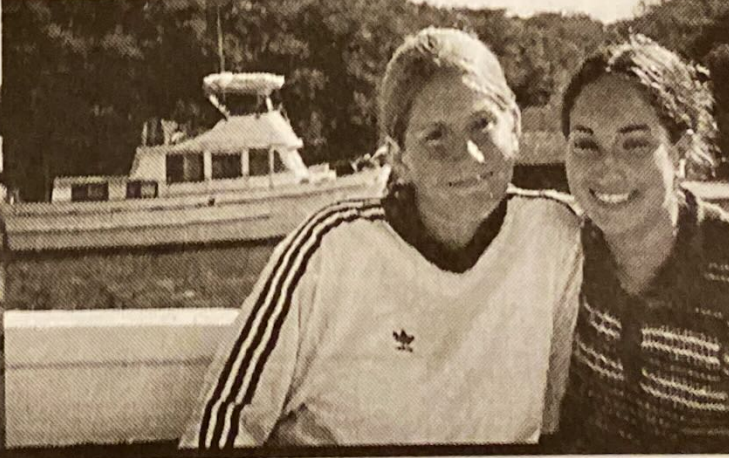
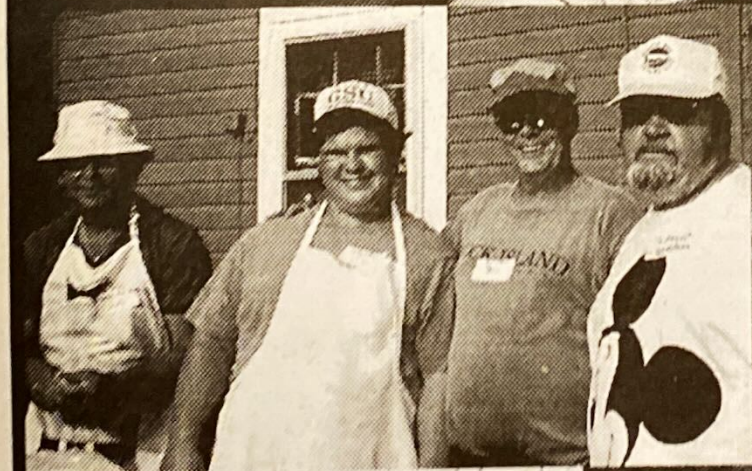
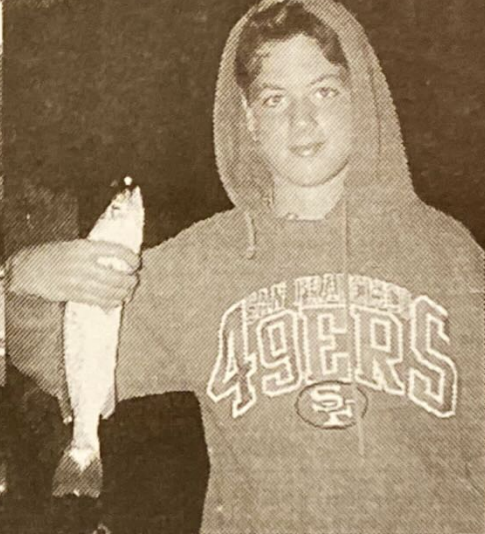
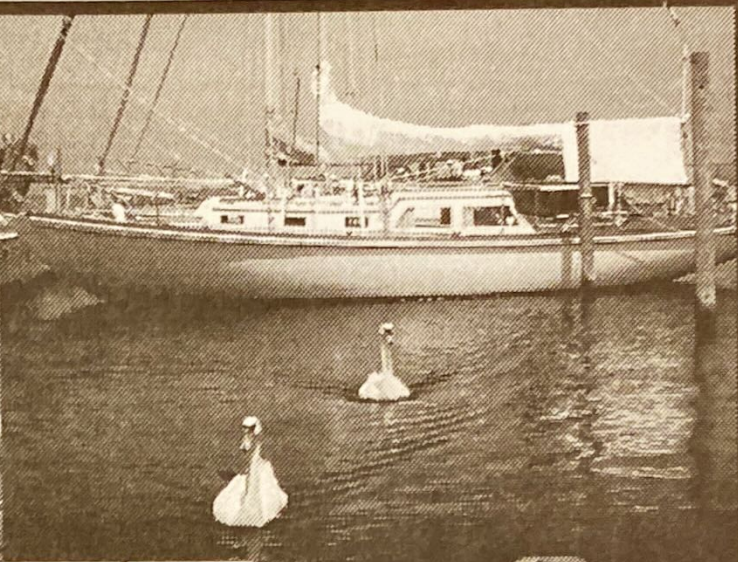
DRESSING SHIP

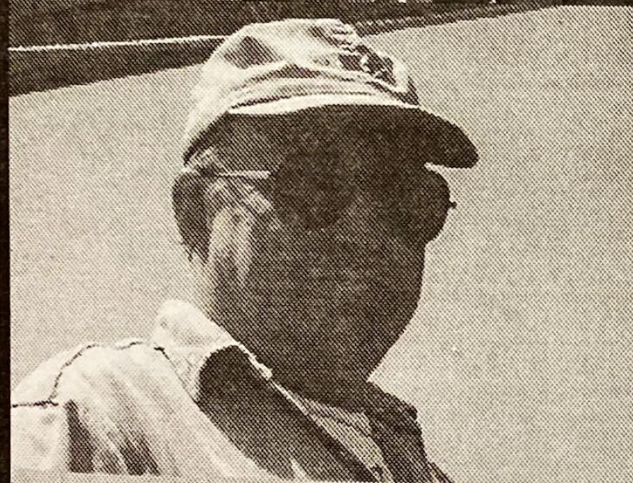
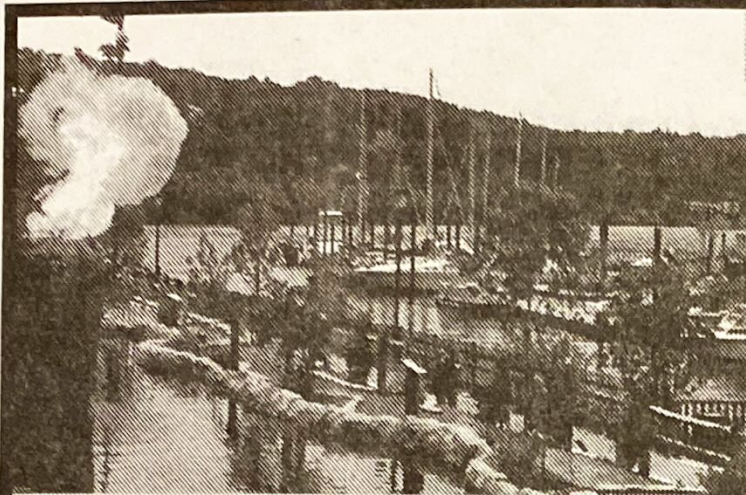
When dressing ship on commissioning day, Independence Day, and on other special occasions, the following order of international code flags is recommended (starting from forward): AB2, UJ1, KE3, GH6, IV5, FL4, DM7, PO 3rd repeater, RN 1st repeater, STzero, CX9, W08, ZY 2nd repeater. Ensigns, burgee, private signals etc. should not be included.

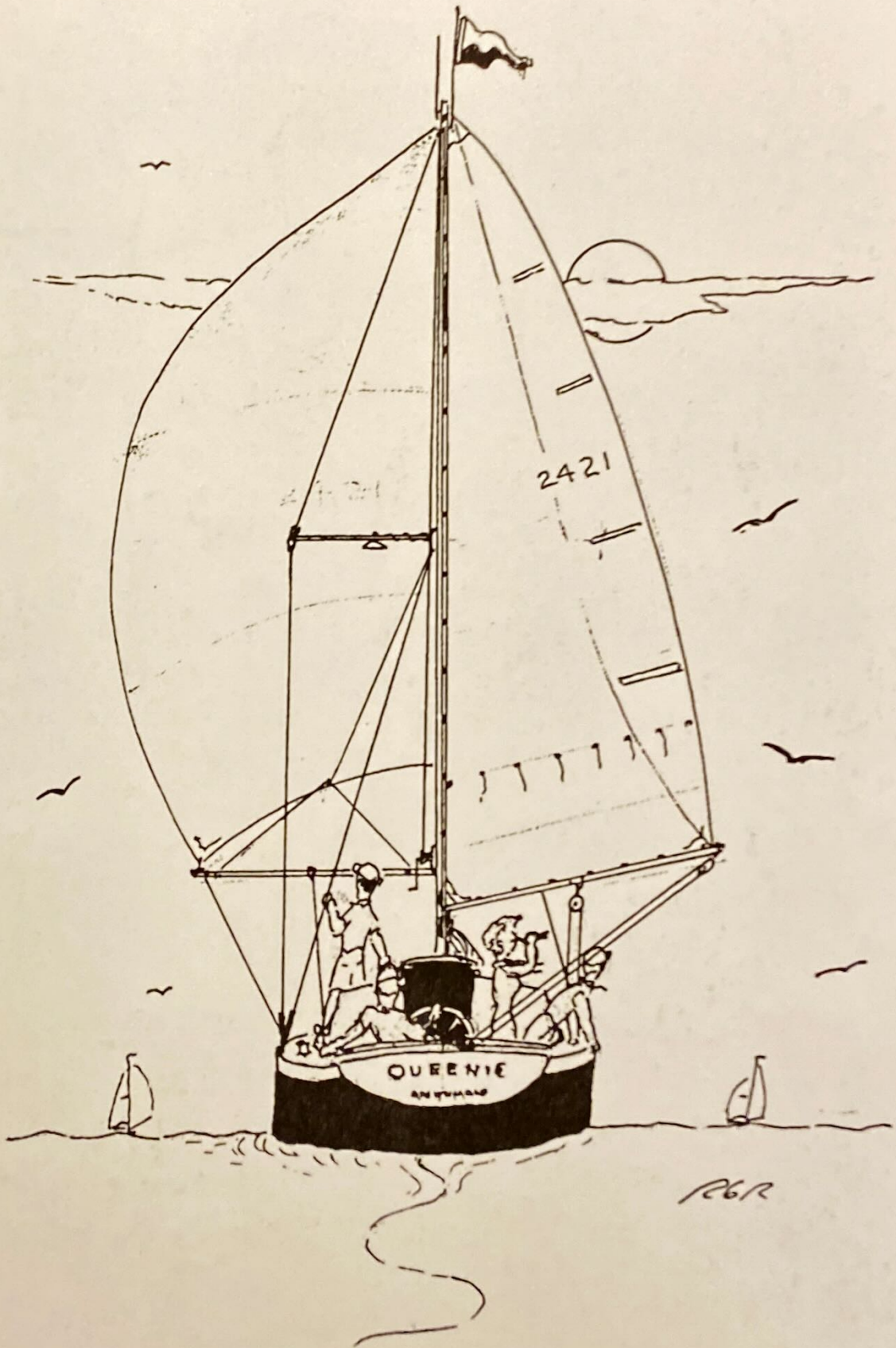
REQUIRED SHAPE DISPLAYS (Daylight)

1. When anchored in an area other than a designated anchorage, sailing vessels must display a single, black spherical shape. For lesser craft (those under 20 meters) the size of the shape should be "commensurate with their length."
- 2 When under sail and power (motorsailing), vessels are required to fly a black cone with the apex down.









INTERNATIONAL CODE FLAGS AND PENNANTS

A		L		W		NUMERAL PENNANTS 1 2 3 4 5 6 7 8 9 0
B		M		X		
C		N		Y		
D		O		Z		
E		P		REPEATERS First Repeater Second Repeater Third Repeater		
F		Q		CODE AND ANSWERING PENNANT 		
G		R				
H		S				
I		T				
J		U				
K		V				

LEGEND =WHITE =YELLOW =RED =BLUE =BLACK