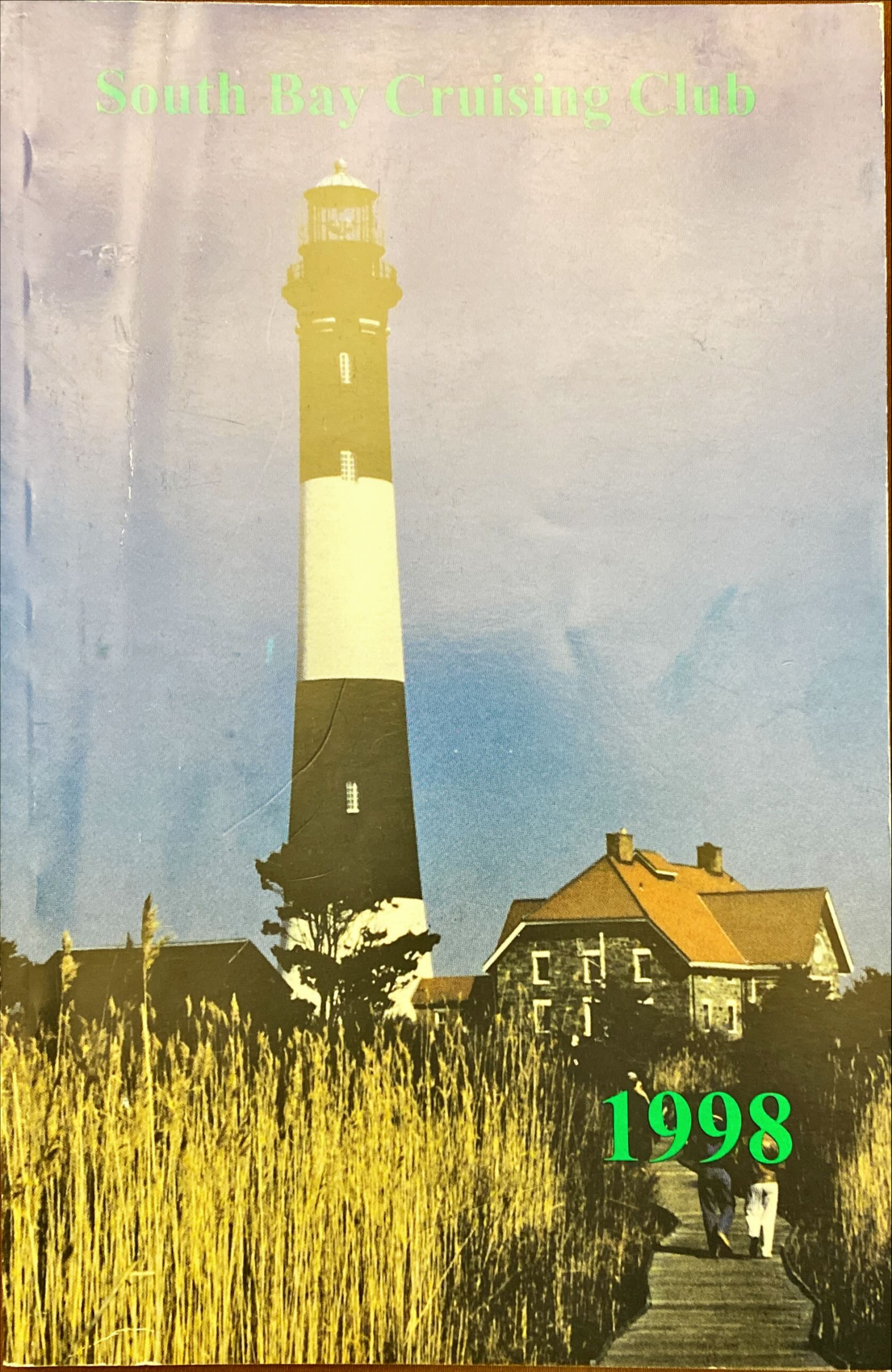


South Bay Cruising Club



1998

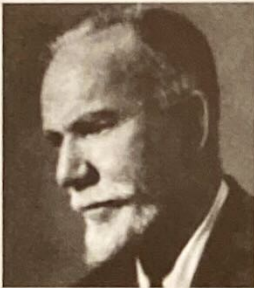
SOUTH BAY CRUISING CLUB

Table of Contents

Honorary Life Members & Past Commodores -----	2
Commodore's Message -----	5
Fleet Captain's Message -----	6
Regatta Captain's Message -----	7
Officers, Board of Governors & Committees -----	8
Early SBCC History -----	12
New Members -----	16
Social & Cruising Schedule -----	18
Racing Schedule -----	19
Notes to Racing Schedule -----	23
Notes to Cruising Schedule -----	26
Racing Program & Instructions -----	30
Qualifying to Race -----	30
Handicaps & Classes -----	31
Racing Rules & Programs -----	33
Race Scoring & Trophies -----	35
Committee Boat Assignments -----	38
Starting Line Procedures & Rules -----	39
Time Limit & Protests -----	41
Race Courses -----	44
SBCC Ships Store -----	49
Year in Review -----	50
SBCC Significant Accomplishments -----	58
Last Year's Cruising Awards -----	60
Last Year's Rendezvous Awards -----	61
SBCC Perpetual Race Trophies -----	64
Last Year's Race Trophies -----	64
SBCC Awards History -----	68
SBCC Members -----	72
SBCC Fleet by Sail Number -----	78
Members' Yachts Alphabetically -----	82
In Memoriam -----	84
Flag Etiquette -----	85
International Code Flags & Pennants -----	inside rear cover

Honorary Life Members and Past Commodores

The SBCC grants honorary life membership to all Past Commodores, in recognition of their devotion and duty to the Club. Each of them has contributed time, talent, and friendship to help make the South Bay Cruising Club the success it is today.



Dr. Marston L. Hamlin*



Hervey G. Smith*



Frederick F. Zimmerman



William P. Carl, Jr.
1951



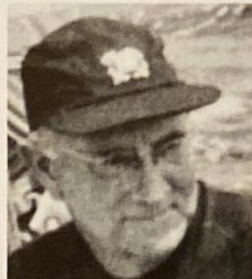
James A. Swan, Jr.*
1952-1953



John F. Young
1954-1955



Henry A. V. Post*
1956-1957



Merritt L. Smith*
1958-1959



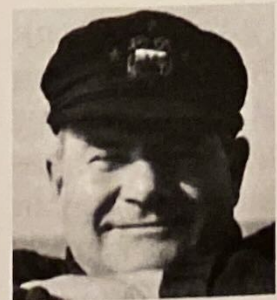
Robert L. Paterson*
1960-1961



John D. Beinert*
1962-1963



Everett F. Seidenberg
1964-1965



Roger G. Ramsdell, Jr.
1966-1967

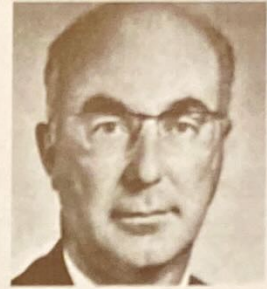
*Deceased



Alex Pearson
1968-1969



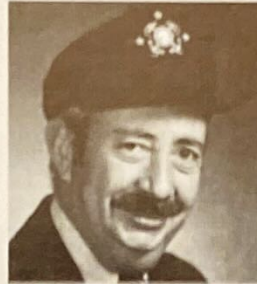
Fred C. Eggerstedt, Jr.
1970-1971



William F. Bradt*
1972-1973



M. Whiting Thayer
1974-1975



Bud Rosenberg
1976-1977



Richard C. Nehring
1978-1979



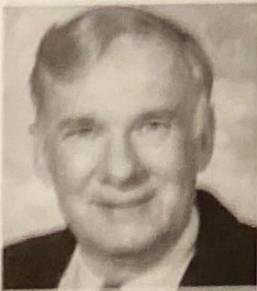
William J. Dwyer*
1980-1981



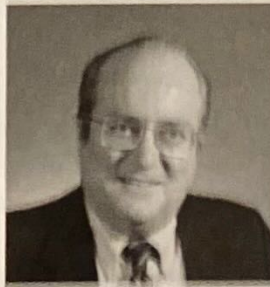
Kenneth A. Kondor*
1982-1983



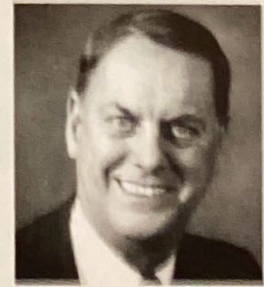
Earl W. Murray, Jr.
1984-1985



Anton F. Davies
1986-1987



Donald J. Zimmer
1988-1989



Robert J. Sheppard
1990-1991



Michael G. Smith
1992-1993



Edward L. Petroske
1994-1995



Barry V. Pittman
1996-1997

*Deceased

BLAZE - SBCC FLAGSHIP



SOUTH BAY CRUISING CLUB

P.O. Box 365

Babylon, New York 11702

SBCC is a member of the Great South Bay Yacht Racing Association

and the

Yachting Club of America

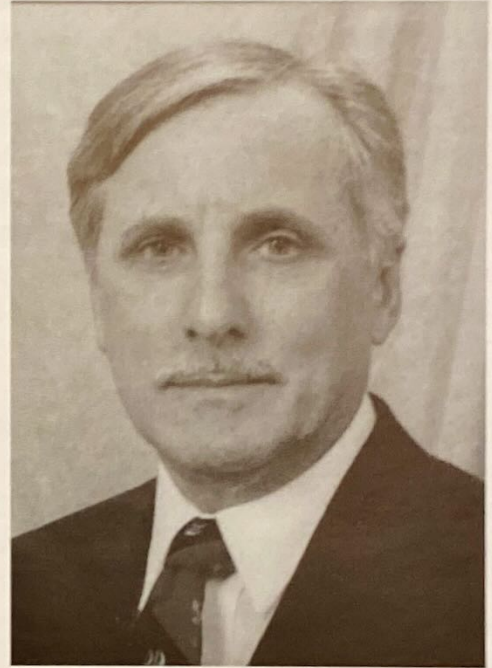
SBCC is listed in the Register of American Yacht Clubs.



Commodore's Message

It is a privilege and an honor to serve as your commodore. I never would have thought 25 years ago, as Diane and I hesitantly approached our first raft-up, that I would some day end up at the helm of the SBCC! It was the first time we experienced the friendliness of the great sailors in this club. As we circled the raft, obviously seeing no one we knew, the Kondors, Spivacks, and Murrays all hailed us and invited us to join them. It was the start of many new friendships and a whole new experience.

Luckily, the years haven't changed the important things for us. The Great South Bay still provides the best sailing breezes, the world's best beaches, protected harbors, and varied activities anywhere! And the people who make up the SBCC are still the world's friendliest, fun-loving, and adventurous sailors. Some are content to sail the bay, others sail the world. I guess it is the peace and beauty we experience sailing. It must affect us all.



The flag officers, governors, and various committees bring a tremendous amount of talent and experience to the job. We will strive to keep the SBCC enjoyable for all. We will take seriously the responsibility entrusted to us to safeguard the proud heritage and traditions of this great club.

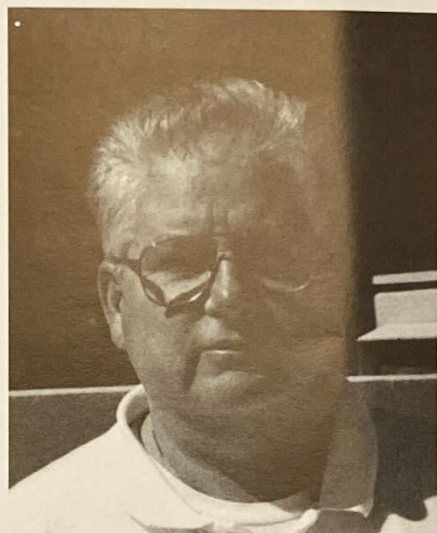
Your attendance at SBCC functions will be taken as a measure of how well we do our job. All we ask is that you participate. So don't miss out, mark your calendars early. Load up the provisions, hoist the sails, and join us for great times, occasional adventure, and plenty of fun. You will end up a better sailor for it.

And the next time you see a new member, make a special effort to make him or her feel right at home. Remember, you could be befriending a future commodore.

See you on the bay,
Dick LaBella

Fleet Captain's Message

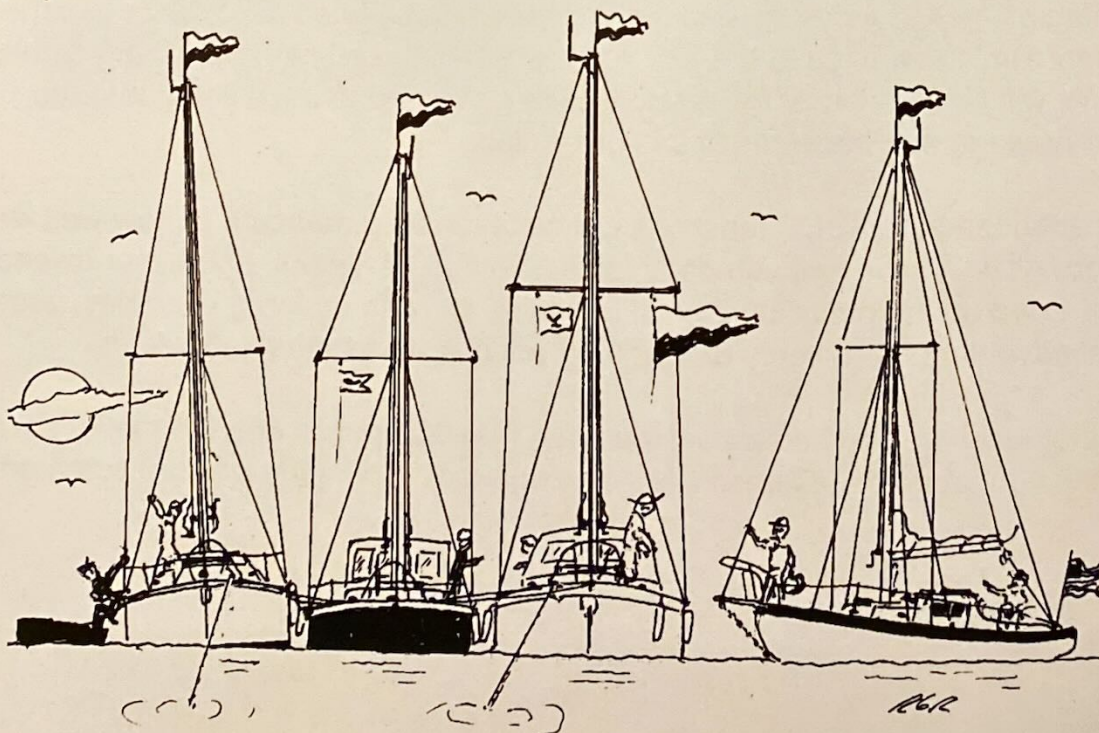
As the new fleet captain for the SBCC I would like to take this opportunity to invite all of the members, both old and new, to join in making this a great year for the South Bay Cruising Club. Go to a rendezvous, attend a party, join a cruise, do a race. The more people that we have participating, the more fun it will be for all. Take the time to welcome new members to the club and you'll find that new members often become new friends. Invite other members to raft up and visit if you are anchored somewhere. If you are in another harbor and you see the SBCC flag, go over and say hello. Our flag can be found all around Long Island, New England, and as far south as Florida. There is something special about sailing into a place for the first time and, as you look around, you see another boat flying the burgee of the South Bay Cruising Club.



We have three cruises scheduled, a rendezvous every weekend, some great parties, family weekends, and a great racing schedule, including two family races. Come out and try some or all of it. You will have a great time this summer and a chance to meet some nice people who enjoy sailing as much as you do.

As fleet captain, I am open to suggestions and ideas from all of the members of the club. If you have anything you think might work for the club, drop me a line or give me a call. See you on the bay.

Dennis Connor
Fleet Captain



Regatta Captain's Message

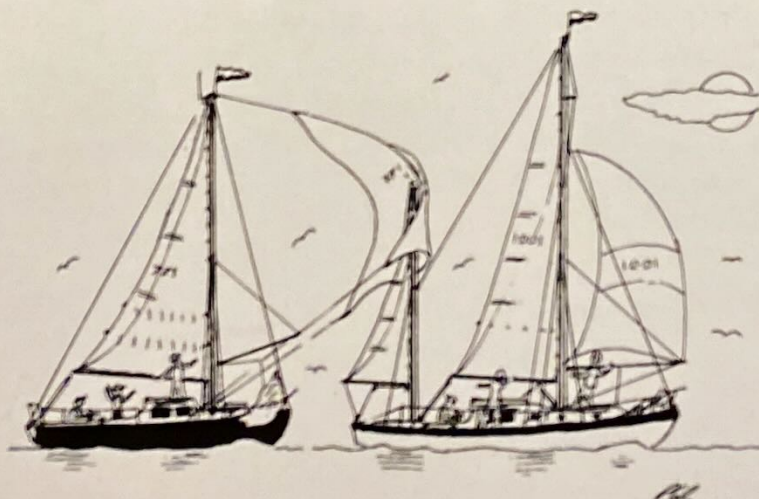
1997 was another great year of racing for the SBCC so accordingly the old adage "if it ain't broke don't fix it" should apply. Having said that, there are certain realities which have to be addressed for 1998 - our changing fleet and avoiding any changes which will dilute a very strong racing program. For 1998, the racing schedule will be streamlined to make it more "user friendly"- encouraging greater participation, by both new and old members, in all of our racing championships. First, the Class Championships will be based on your best five finishes out of eight SBCC "core" events, which, wherever possible, have been returned to their historical positioning in the race schedule. A few events have been eliminated for 1998 in response to participation levels, coordination with the cruise schedules, and the fact that the Class Championships are no longer the cornerstones of our racing program. That distinction has clearly shifted to the twilight series. To strengthen the twilights even more, all of the series will return to a three-race format. This not only reduces the commitment required for competing in a series, but also eliminates the poorly attended events prior to Commissioning Day. It also ends the twilight season one week earlier than last season, avoiding starts after sunset. The scoring system for the overall twilight championships has also been revised for 1998. This change places greater importance on participation in individual races, allowing boats to compete for overall championships even if they could only race in half of the total events.



As there have been several changes and revisions to the race schedule, scoring, and the notes and instructions for 1998, I urge everyone to review the race program carefully.

This will be a great year for the SBCC and SBCC racing, so don't miss out on the fun and excitement. If you're an old hand at racing, keep up the good work. If you're a new racer, jump in and be part of the most competitive racing fleet on Long Island. Let's go racing.

Thom Penn
Regatta Captain



SOUTH BAY CRUISING CLUB

An organization formed in 1951 to promote cruising under sail on the Great South Bay and nearby waters.

OFFICERS

Commodore, Richard LaBella - 277-4826
Vice Commodore, Richard LaTorre - 321-7311
Rear Commodore, Sally Eilbeck - 661-1507
Fleet Captain, Dennis Connor - 665-7266
Regatta Captain, Thom Penn - 277-5980
Treasurer, Robin Kohl - 795-7725
Corresponding Secretary, Michael Kohl - 795-7725
Recording Secretary, Kathleen Simmons - 422-0625
Fleet Surgeon, Andy Peters, MD - 766-6766
Chantyman - Vacant

BOARD OF GOVERNORS

Barry Pittman - 666-3032 Joyce Gotard - 541-2805
Bob Sheppard - 472-0099 Gene Reardon - 968-5082
Bill Menger - 587-4930 Dick Daytz - 669-6993
Aileen Eppig - 422-6032

COMMITTEES

Cruising

Dennis Connor - 665-7266

Corinne Conger, Barbara Connor, Thomas & Joyce Gotard,
Dennis & Adriana Krug, Bob & Ronnie Martorana,
Joseph McCormack, Richard & Ginny LaTorre, John Rambold

Hospitality

Lisa Cavaliere - 981-7367 / Cynthia Van Tassel - 422-6382

Richie & Sandy Czach, Dick Daytz, Bill & Sally Eilbeck,
Martin & Catherine Farrell, Jim & Donna Ferguson,
Joe & Jean Fili, Claudine Finkle, Mickey & Barbara Forde,
Dick Graham, Ginger Greenblatt, Dick & Diane LaBella,
Ginny LaTorre, Jim & Maureen Leddy, Jack & Barbara Levitsky,
Joe & Dodi McCormack, Bob & Ronnie Martorana,
Bryan McLoughlin, Gaspare & Laurie Messina,
Jim & Jaclyn Mularadelis, Jack & Barbara Nielsen,
Charlie & Linda Parker, Richard & Grace Parker,
Frank & Paula Roan, Ray & Jo Rothaug, Robert & Joyce Sabella,
Jim & Diane Schlitt, Bob & Carol Sheppard, Kathy Simmons,
Ed Sowden, Robert Snyder, Doug & Debra Spivack,
Dave & June Tedesco, Bill & Nancy Thomas

GSBYRA Representative

Bob Sheppard - 472-0099

Handicap & Measurement

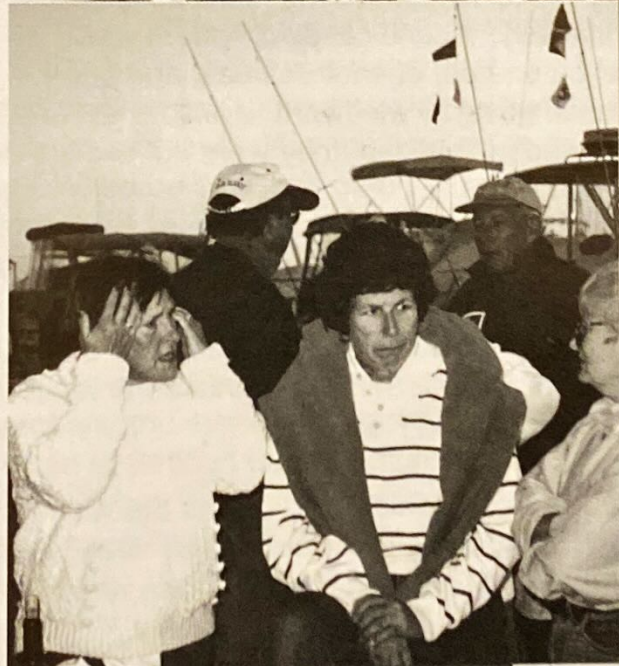
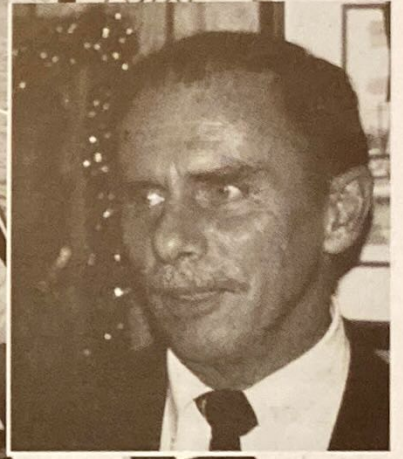
Frank Marinaccio - 231-6457

Doug Davies, Joe Dudek, Rich Finkle, Kevin Padden, Thom Penn

- Protest** **Bill Wheeler - 666-7369**
 Larry Becker, Aileen Eppig, Dave Hyer, Frank Marinaccio,
 Thom Penn, Barry Pittman, Greg Schneller
- Membership** **Doug Davies - 665-0174**
- Program** **Dick Graham - 581-5412**
 Andrea Vecchio
- Historian** **Gene Reardon - 968-5082**
- Storekeeper** **Barbara Connor - 665-7266**
- Trophy** **Lee Christiansen - 277-6311**
- Mailing** **Marty O'Connell - 422-2216**
- Yearbook** **Bill Grauer - 277-6212**
 Lisa Cavaleri, Corinne Conger, Doug Davies, Bill & Sally Eilbeck,
 Tom & Joyce Gotard, Vivian Grauer, Michael & Robin Kohl,
 Dick LaBella, Gaspare & Laurie Messina, Kevin Padden,
 Barry Pittman, John Rambold, Paul Rendich,
 Gene Reardon, Jim Reichel, Jack Saxe, Bob Snyder
- Regatta** **Thom Penn - 277-5980**
 Doug Davies, Jim Reichel, Kevin Padden, John Davis, Frank
 Marinaccio, Dick La Bella, Greg Schneller,
 Sally Eilbeck, Lee Christiansen
- Scoring** **Jim Reichel - 665-2327**
- Welcoming** **Joe & Ann Marie Dudek - 731-0530**







In the Beginning... The Early Years of the SBCC

by Gene Reardon

The notion of forming an organization to bring together the owners of cruising boats on Great South Bay originated with three sailing friends who lived in the Babylon area at the time. Bill Carl, Jamie Swan and Ted Zimmerman talked up the idea among their friends, with the result that 15 skippers gathered at the Babylon Yacht Club on a rainy Friday night, June 11, 1951.

The initial meeting was chaired by Ted Zimmerman, acting as temporary commodore. That meeting established the purpose and tone of the organization, to have "...cruising auxiliary sailing vessels participate in events mutually beneficial to all concerned in the way of races and rendezvous." There was no need to consider a fixed base for the Club because the early members already belonged to local yacht clubs where their friends and guests would be welcome for social gatherings. These club memberships provided such necessary amenities as boat hoists for the one-designs and junior sailing programs for the children, not to mention the traditional facilities of docks and clubhouses.

That first meeting was a highly productive one. The dues and voting structure were established, William P. Carl Jr. was chosen to be the first commodore, by drawing the short straw as he says, and a burgee design suggested by Hervey Garrett Smith was adopted. The first race, also suggested by Hervey, was scheduled, sailing around West Island in either direction. Additionally, a handicapping system was agreed upon to score it. Two classes would be offered, one for catboats and one for everything else. Only working sails, those used going to windward, could be set and, while outboard powered auxiliaries were allowed in the Club, they were not eligible for prizes.

By the second meeting, a race committee under Jack Travis had been organized, Brion Foulke's motorboat *FOLKS* commandeered to be committee boat, and the first race committee decision promulgated - barging at the start was not allowed. Furthermore, the first gift of a perpetual trophy had been received, Fred Schnur's Perseverance Trophy for the last boat to finish in the West Island Race.

Thirty-six yachts sailed in the first West Island Race. Gortie Baldwin was the winner by a half hour in his 30-ft S&S sloop *CHANTEY*, that had been built out of dead trees by Jakobson's in 1947. Jack Croft's 24-1/2-ft *NAIAD* won the catboat class and Doc Hansen's 26-ft sloop *JUDY* was ceremoniously awarded the Schnur Trophy.

By the end of the first season, the Club had sailed in the GSBYRA Race Week, participated in its first invitation race, provided by the Sayville Yacht Club, and raced to Bellport to deliver the small fry for the BBYC Labor Day Regatta, thereby starting a traditional Smith Point rendezvous on that weekend. A constitution had been drawn up with the advice of Fred Schnur and the basic committee structure that we have today was in place. The Cruising Committee Chairman was Henry Post; Regatta Committee Chairman, Jack Young, and Social Committee Chairman, Jamie Swan. The Fleet Captain was Hervey Smith and Fleet Surgeon Doc Hansen.

The Club began its second year with 62 members. The first annual meeting was held in January following dinner at a Sayville restaurant at which 120 guests were present. The 1952 officers and board were elected, with Jamie Swan being named as commodore. The first Club cruise was also planned, with Shinnecock Bay as its destination. That summer, four boats spent a week on the cruise. Two of those who were on that cruise are still members of the Club, Marguerite Post and Everett Seidenberg.

By the first business meeting in early May, a set of bylaws had been prepared by the Club's resident counselor, Fred Becker, and were read and approved. The same meeting saw the introduction of the official SBCC chantey, "Connetquot River", by the Chanteyman, Freeman Bloodgood. (Great South Bay is mighty shoal, heave away, heave away..... to the tune of "Codfish Chantey".) The members also agreed that the next year's yearbook should include photos of all the Club yachts. The additional cost was to be defrayed by a charge of fifty cents a copy.

All of this was duly recorded in the first, tentative Club newsletter, a full 8-1/2 x 11 page of single-spaced typing that was issued by Jack Young, the Club Secretary, complete with a hand-drawn club burgee.

At the next meeting, in mid-June, the members agreed to establish an annual cruising award to recognize what a committee made up of the flag officers and cruise chairman would deem to be the best-planned and best-executed cruise of the season. A preliminary itinerary had to be filed before departure and a log submitted upon return. The log would be judged on the amount of detail it included, the extent to which the itinerary was adhered to, the length and the duration of the cruise. The deed of gift established a scoring system in which a maximum number of points could be awarded, depending on merit, in each category. The winner would be determined on the basis of the greatest number of points. Jack Young was the winner that year, with his 41-ft yawl *REVERIE*, for a cruise to Nantucket and the Cape.

The year 1952 saw additional race invitations received. The Babylon Yacht Club provided a Fourth of July weekend handicap race to Islip and return, with all SBCC members and their crews invited to a dance at the yacht club that night. The Club cruised to Bellport on the Saturday of Labor Day weekend, where the Bellport Bay Yacht Club scheduled a handicap race starting off their club dock on Sunday morning, proceeding to the Blue Point flasher (left on either hand) and return. The following day the Wet Pants Association conducted an invitational race in Patchogue Bay.

By the fall meeting, the treasurer could report 127 paid members and a bank balance of \$96. The only nomination for officers for the coming year was for a continuation of the 1952 slate, thereby establishing the Club tradition of two-year terms for its flag officers.

The Club began its third year with 168 people attending the mid-winter dinner at the South Bay Golf Club, which was located across Montauk Highway from Southward Ho. Dues for the year were established at \$3.00 for boat owning members, \$1.00 for non-boat owners, plus \$3.00 for a yacht photo in the yearbook and 50¢ a copy for the yearbook. In April, the Club undertook its first effort at political activism, mounting a

campaign in opposition to a Suffolk County proposal to build a fixed bridge at Smith Point with a vertical clearance of 30-1/2 ft. The Army Corps of Engineers sided with the Club.

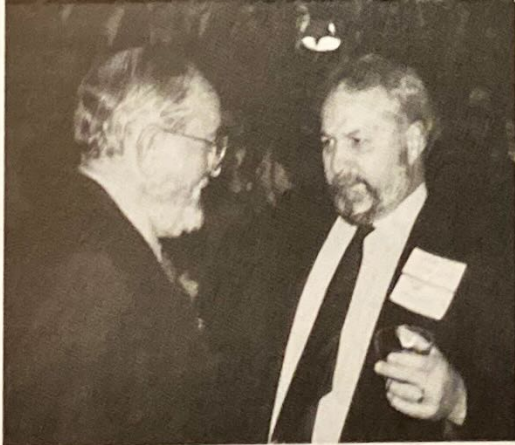
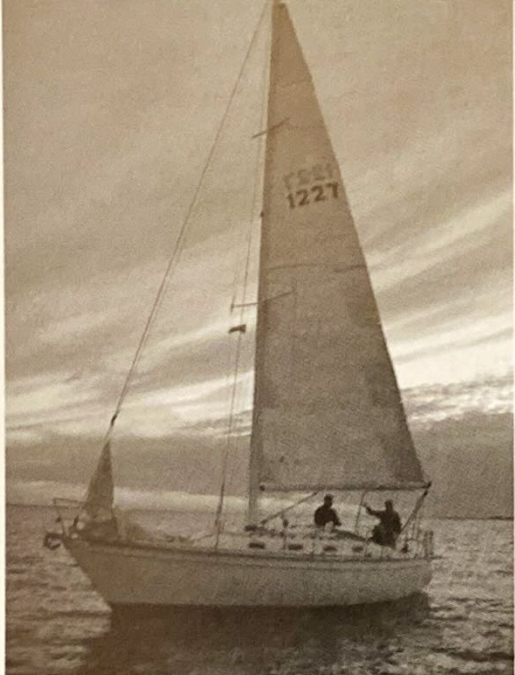
The Club celebrated the first official opening of its sailing season with a commissioning day at the Babylon Yacht Club on Saturday, May 30th. Eight Club boats were present, and the fleet captain hoisted a new 36"x80" burgee at gunfire. Later that summer, an ocean race was inaugurated, about a 15-mile course from the start off Democrat Point to the offshore whistle buoy that replaced a lightship marking the approach to Ambrose, and return. Thirteen yachts participated and the race was won by John Beinert in his 22-ft Sweisguth catboat *LADY LOU V*.

The season concluded with a last meeting at which the treasurer announced that he had \$53.40 in the bank, leading the members present to vote to increase the dues to \$6.00 for active members and \$3.00 for subscribing (non-boat owning) members, these fees to include the yearbook charge. The 1954 season would open with 140 members and 80 yachts in the Club fleet.

The foregoing has been culled from several retrospectives prepared by Everett Seidenberg, one of the founding members, eighth commodore and first historian of the Club, and from the available newsletters of the period. G.R.



EXHIBITS WAR TRIO



OUR NEW MEMBERS

We extend a warm welcome to those folks who joined our club this past year. This club means different things to each member - whether it be racing, rendezvousing, or cruising. Most of all it means fellowship and friendship and we hope your experiences with our club will be filled with the pleasures that come from being a member of the South Bay Cruising Club - **WE ALL EXTEND YOU A WARM WELCOME.**

Mickey and Barbara Forde

If you see Roger Goodwin's old Wanderer on the bay it's probably Mickey and Barbara out for a sail with their son Jon. Though they only started sailing last season, after years of owning a power boat, they have already sailed to Cape Cod. This year they have their sights set on the Chesapeake.

Richard and Holly Franwick

When the weather isn't right for sailing you can find Richard and Holly on the slopes skiing or out for a nice bike ride together. Look out for these guys to be very competitive on the race course this summer.

Robert and Ann Glasser

Robert and Ann had to join the club after seeing our flags flying all over, from the bay to Block Island. It was meant to be.

Chuck and Nancy Healey

Chuck and Nancy have been sailing for a few years, but are really looking forward to learning more about the bay. Maybe we can convince them to join the bay cruise this summer?

Gary and Terry Johnson

Though they have only had their boat since this past November, Gary and Terry plan to participate in all that the club has to offer. Also, a big welcome to the children, Lauren and Erik.

Mickey Levine

Not only does Mickey plan on attending rendezvous and going cruising with the club, but I've been told that he is a member of the Coast Guard Auxiliary.

Ed and Karen Manion

Ed and Karen, along with their sons, love the comraderie of the club. We look forward to seeing them at many rendezvous.

Bryan McLoughlin

Bryan decided to join the club after racing for many years on the boat he now owns. He'll continue to race the boat and take part in the rendezvous.

Jack Morgan

You may have already met Jack. Sailing since he was nine years old, his skill came in handy when he crewed for several of our club races.

James and Jaclyn Mularadelis

Comraderie and the chance for new friends is what James and Jaclyn are looking for from the SBCC. I'm sure that we can accommodate them.

Richard Murphy and Kim Riley

Richard and Kim really enjoy sailing, especially now that Richard is retired.

Fred Orlando

Fred has always been interested in sailing, but has only recently taken up the sport. His children; Brooks and Darcy, are also learning the ropes. Could they be future SBCC members?

Mark and Dorothy Randazzo

Mark and Dorothy were convinced to join the club by friends, but sailing was already in Mark's blood. Mark has been sailing most of his life and was taught by his father and grandfather.

Daniel Rudek and Laurie Nappi

Daniel has enjoyed sailing since his dad gave him a day sailer when he was sixteen. Now he shares his love of the sport with Laurie and the children; Stephanie, Ashley and Dario.

Robert and Joyce Sabella

Now that their daughters are on their own, Robert and Joyce have the time to really enjoy the club. They're eager to start teaching their new grandson the basics of boating and cruising.

Sam and Madge Scherek

The rendezvous are what drew Sam and Madge to the SBCC. Who wouldn't want to attend some of our great weekend get togethers?

Gary and Sue Schwarting

Some of you may remember Gary and Sue from when they previously belonged to the SBCC. They tell me that they are both looking forward to the racing. I have a feeling that they mean to win a few too.

Douglas and Debra Spivack

Welcome Douglas and Debra back to the club. Douglas and his dad were long time members and his father is still a member.

Urs, Theresa and Oliver Staehli

Although we welcome Urs and Theresa (truly we do!), it is their one year old son Oliver who has really won us over with his adorable smile.

Dave and June Tedesco

Getting lured into the beauty of sailing on their friends sailboat in Florida, Dave and June made the decision. They bought their own boat a year and a half ago. Of course, if their sons had anything to do with it, they would have a motor boat.

Jeff and Diane Wendelkin

Jeff and Diane are avid sailors. Look for them to be at many of the events with their little boy Craig who at one year old already shows the right demeanor for a true sailor.

John, Linda and Meagan Webb

Once avid powerboaters, John, Linda and Meagan have now joined the world of sailing. They look forward to all that they can learn from our long time members.

SOUTH BAY CRUISING CLUB SOCIAL AND CRUISING SCHEDULE

Date	Event	Location	Vessel	Captain
Sat-Apr-18	Spring cocktail party	Bay Shore YC		Hospitality
Sat-May-9	Rendezvous	Great River	Tranquilizer	Daytz
Sat-May-16	Rendezvous	Unqua Heading	Stardust	Ferguson
Sat-May-23	Rendezvous	Oak Island	Fox	Davis
Mon-May-25	Comm. Day	Babylon YC		Hospitality
Sat-May-30	Night on the town	Patchogue River	Cee-J2	Rambold
Mon-Jun-1	Three-Week Cruise	Chesapeake	Vixen	Peter
Sat-Jun-6	Rendezvous & Clean-up	Great River	Fenian	Simmons
Sat-Jun-13	Spring Family Weekend	Watch Hill	Drumshanbo	Pittman
Sat-Jun-20	Rendezvous	Sore Thumb	Njord	Eilbeck
Sat-Jun-27	Sink or Swizzle	Hemlock	Carefree	LaTorre
Sat-Jul-4	Rendezvous	Great River	Blaze	LaBella
Mon-Jul-6	Two-Week Cruise	Block Isl., Shelter Isl.	Leprechaun	Connor
Sat-Jul-11	Two-Week Cruise	Block Isl., Marthar's- Vineyard	Njord Cee-J2	Eilbeck Rambold
Sat-Jul-11	Rendezvous	Gilgo Cove	Dragon	Kohl
Sat-Jul-18	Rendezvous	Great River	Vixen	Peter
Sat-Jul-25	Rendezvous	Hemlock	Pzaz	Schlitt

SOUTH BAY CRUISING CLUB RACE SCHEDULE

Date	Race	Wrng. Gun	Startg. Seq.	Notes	Race Chairperson	Starting Location	Course
Mon-May-25	Creepstakes	1100	Crpstks	1,5	A.Eppig	Babylon	A-D
Wed-May-27	BShr Twi Spring #1	1930	NoSp.	2,9	F. Marinaccio	Bay Shore	A-E
Thu-May-28	Bab Twi Spring #1	1930	NoSp.	2,9	K. Padden	Babylon	A-D
Sun-May-31	FOUNDERS CUP	1200	Reg.	4,10	R. Finkle	Bay Shore	A-I
Wed-Jun-3	BShr Twi Spring #2	1930	NoSp.	2,9	D. Davies	Bay Shore	A-E
Thu-Jun-4	Bab Twi Spring #2	1930	NoSp.	2,9	P. Rendich	Babylon	A-D
Sat-Jun-6	Sprint Race 1,2 & 3	1100	NoSp.	2,8	W. Grauer	Bay Shore	A-F
Wed-Jun-10	BShr Twi Spring #3	1930	NoSp.	2,9	W. Wheeler	Bay Shore	A-E
Thu-Jun-11	Bab Twi Spring #3	1930	NoSp.	2,9	G. Schneller	Babylon	A-D
Sun-Jun-14	Spring Family Race	TBA	NoSp.	1	R. Daytz	Watch Hill	A-B
Wed-Jun-17	BShr Twi Summer #1	1930	NoSp.	2,9	J. Dudek	Bay Shore	A-E
Thu-Jun-18	Bab Twi Summer #1	1930	Reg.	2,9	P. Rendich	Babylon	A-D
Sat-Jun-20	OCEAN RACE	1200	Reg.	4,10	R. Forman	Ocean	TBA
Wed-Jun-24	BShr Twi Summer #2	1930	NoSp.	2,9	T. Drossos	Bay Shore	A-E
Thu-Jun-25	Bab Twi Summer #2	1930	Reg.	2,9	J. Reichel	Babylon	A-D
Sat-Jun-27	SMITH TROPHY	1200	Reg.	4,10	D. Caporale	Bay Shore	A-I
Wed-Jul-1	BShr Twi Summer #3	1930	NoSp.	2,9	D. Davies	Bay Shore	A-E
Thu-Jul-2	Bab Twi Summer #3	1930	Reg.	2,9	J. Davis	Babylon	A-D
Sat-Jul-4	Babylon YC Invit. I	1300	Reg.	3,6	BYC	Babylon	TBA
Sun-Jul-5	Babylon YC Invit. II	1300	Reg.	3,6	BYC	Babylon	TBA
Wed-Jul-8	BShr Twi Mid-Sum #1	1930	Reg.	2,9	W. Cook	Bay Shore	A-E
Thu-Jul-9	Bab Twi Mid-Sum #1	1930	Reg.	2,9	J. Morgan	Babylon	A-D
Sat-Jul-11	Double-Handed Spring Series 1&2	1100	Reg.	2,8	M. Randazzo	Bay Shore	A-E
Wed-Jul-15	BShr Twi Mid-Sum #2	1930	Reg.	2,9	T. Penn	Bay Shore	A-E
Thu-Jul-16	Bab Twi Mid-Sum #2	1930	Reg.	2,9	S. Ossandon	Babylon	A-D
Sun-Jul-19	COMMODORE'S CUP	1200	Reg.	4,10	G. Schwarting	Nicoll Bay	A-H
Wed-Jul-22	BShr Twi Mid-Sum #3	1930	Reg.	2,9	B. Pittman	Bay Shore	A-E
Thu-Jul-23	Bab Twi Mid-Sum #3	1930	Reg.	2,9	M. O'Connell	Babylon	A-D
Sat-Jul-25	Sayville YC Invit #1	1300	SYC	3	SYC	Sayville	TBA
Sun-Jul-26	Sayville YC Invit #2	1200	SYC	3	SYC	Sayville	TBA
Thu-Jul-30	Around LI Race	TBA	Spec.	6,11		Richmd YC	TBA
Thu-Jul-30	GSBYRA Rc Wk #1	1300	Reg.	3,6	GSBYRA	Bay Shore	TBA

SOUTH BAY CRUISING CLUB SOCIAL AND CRUISING SCHEDULE

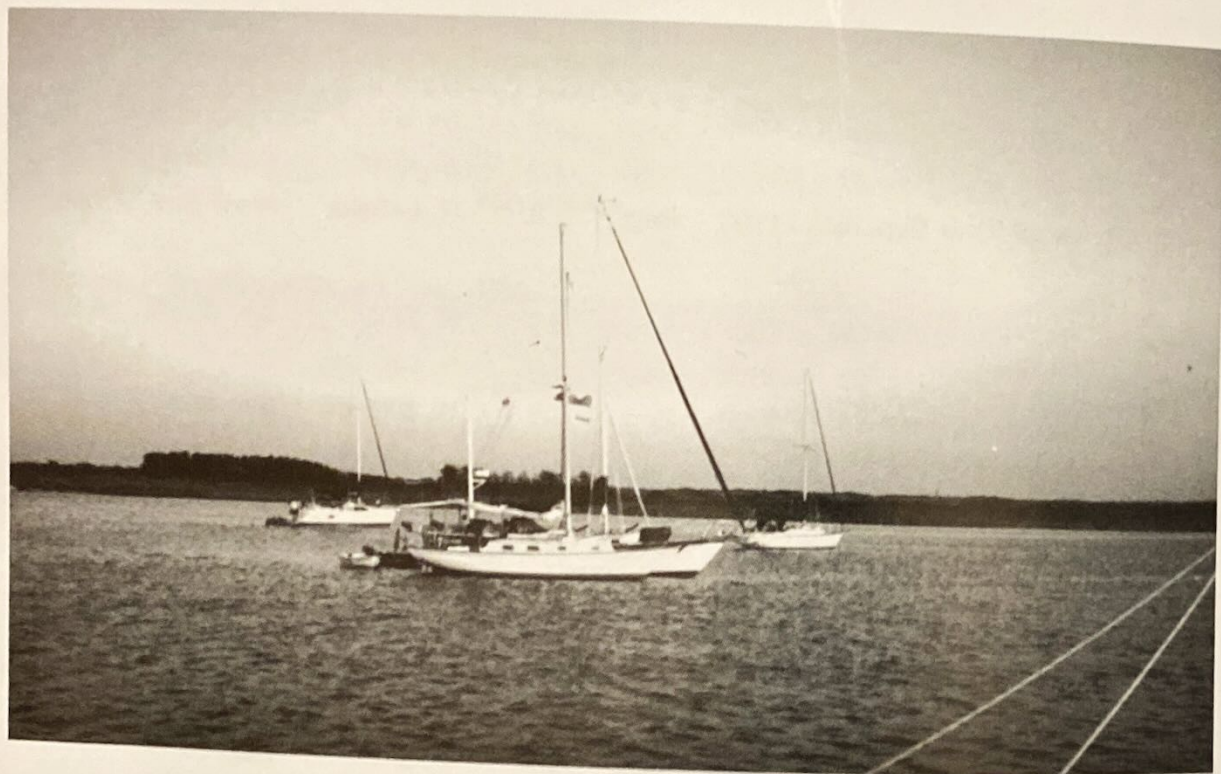
Date	Event	Location	Vessel	Captain
Sat-Aug-1	Birthday	Oak Island	Leprechaun	Connor
Sat-Aug-8	Tacos & Tequila	Great River	Jam V	Dudek
Sun-Aug-9	Champagne Breakfast	Great River		Hospitality
Sat-Aug-15	Blast	Vanderbilt's		Hospitality
Sun-Aug-16	One-Week Cruise	TBA	TBA	TBA
Sat-Aug-22	European Affair	Hemlock	Quest	Van Tassel
Sat-Aug-29	Rendezvous	Gilgo Cove	Silhouette	T. Gotard
Sat-Sep-5	Jack's Trophy Weekend	Sayville Y.C.	Carefree	LaTorre
Sat-Sep-12	Rendezvous	Unqua Heading	Stardust	Ferguson
Sat-Sep-19	Rendezvous	Atlantique	Soverain	Mattera
Sat-Sep-26	Rendezvous	Hemlock	Saltheart	McCormack
Sat-Oct-3	Fall Family Weekend	Watch Hill	Njord	Eilbeck
Sat-Oct-10	Rendezvous	Atlantique	Counterpoint	Becker
Sat-Oct-17	Golf Weekend	Timber Pt.	Celebration	Sicinski

SOUTH BAY CRUISING CLUB RACE SCHEDULE

Date	Race	Wrng.		Startg.	Notes	Race	Starting	Course
		Gun	Seq.					
Fri-Jul-31	GSBYRA Rc Wk #2	1300	Reg.	3,6		GSBYRA	Bay Shore	TBA
Sat-Aug-1	GSBYRA Rc Wk #3	1300	Reg.	3,6		GSBYRA	Bay Shore	TBA
Sun-Aug-2	GSBYRA Rc Wk #4	1000	Reg.	3,6		GSBYRA	Bay Shore	TBA
Wed-Aug-5	BShr Twi Lt Sum #1	1930	Reg.	2,9		L. Christiansen	B Shore	A-E
Thu-Aug-6	Bab Twi Lt Sum #1	1930	Reg.	2,9		S. Penny	Babylon	A-D
Sat-Aug-8	West Island Race	1200	Reg.	1,10		T. Jones	Nicoll Bay	H
Wed-Aug-12	BShr Twi Lt Sum #2	1930	Reg.	2,9		M. Schoenwald	B Shore	A-E
Thu-Aug-13	Bab Twi Lt Sum #2	1930	Reg.	2,9		M. Kind	Babylon	A-D
Sat-Aug-15	Great River Cup 1&2	1100	Reg.	2,8		R. LaBella	Nicoll Bay	TBA
Wed-Aug-19	BShr Twi Lt Sum #3	1930	Reg.	2,9		H. Smith	Bay Shore	A-E
Thu-Aug-20	Bab Twi Lt Sum #3	1930	Reg.	2,9		P. Capitain	Babylon	A-D
Sun-Aug-23	Double-Handed Summer Series 1&2	1100	Reg.	2,8		W. Eilbeck	Bay Shore	A-E
Wed-Aug-26	BShr Twi Fall #1	1900	NoSp.	2,9		D. Supple	Bay Shore	A-E
Thu-Aug-27	Bab Twi Fall #1	1900	Reg.	2,9		B. McLoughlin	Babylon	A-D
Sat-Aug-29	FOULKE TROPHY	1800	Reg.	4,5,11		J. Davis	Bay Shore	G
Wed-Sep-2	BShr Twi Fall #2	1900	NoSp.	2,9		L. Christiansen	B Shore	A-E
Thu-Sep-3	Bab Twi Fall #2	1900	Reg.	2,9		B. Kennedy	Babylon	A-D
Sat-Sep-5	Jack's Trophy #1	1300	Reg.	3		SYC	Nicoll Bay	TBA
Sun-Sep-6	Jack's Trophy #2	1200	Reg.	3		SYC	Sayville	TBA
Wed-Sep-9	BShr Twi Fall #3	1900	NoSp.	2,9		F. Marinaccio	Bay Shore	A-E
Thu-Sep-10	Bab Twi Fall #3	1900	Reg.	2,9		K. Padden	Babylon	A-D
Sat-Sep-12	Pursuit Races 1&2	1100	NoSp.	2,8		A.Eppig	Bay Shore	A-E
Sun-Sep-13	BYC/SBCC Challg Rc	1300	TBA	1,3,5		BYC	Babylon	A-F
Wed-Sep-16	BShr Twi Wrap-Up #1	1900	NoSp.	2,9		J. Dudek	Bay Shore	A-E
Thu-Sep-17	Bab Twi Wrap-Up #1	1900	NoSp.	2,9		J. Davis	Babylon	A-D
Sun-Sep-20	KELLY TROPHY	1300	Reg.	1,4,10		L. Becker	Bay Shore	A-I
Wed-Sep-23	BShr Twi Wrap-Up #2	1900	NoSp.	2,9		B. Pittman	Bay Shore	A-E
Thu-Sep-24	Bab Twi Wrap-Up #2	1900	NoSp.	2,9		G. Schneller	Babylon	A-D
Sat-Sep-26	Louie Orr Invit.	1200	Reg.	3		BYC	Babylon	TBA
Sun-Sep-27	Babylon Mayor's Cup	1300	TBA	3,6		LIYC	Babylon	TBA
Wed-Sep-30	BShr Twi Wrap-Up #3	1900	NoSp.	2,9		W. Wheeler	Bay Shore	A-E
Thu-Oct-1	Bab Twi Wrap-Up #3	1900	NoSp.	2,9		M. Goodman	Babylon	A-D
Sun-Oct-4	Fall Family Race	TBA	NoSp.	1		J. Rambold	Watch Hill	A-B
Sun-Oct-11	DISCOVERER'S RACE	1200	Reg.	4,10		J. Grover	Bay Shore	A-I

SOUTH BAY CRUISING CLUB SOCIAL AND CRUISING SCHEDULE

Date	Event	Location	Vessel	Captain
Sat-Oct-24	Boatyard Party	Yacht Service		Hospitality
Sat-Dec-19	Holiday Party	Bay Shore YC		Hospitality



SOUTH BAY CRUISING CLUB RACE SCHEDULE

Date	Race	Wrng. Startg.		Notes	Race Chairperson	Starting Location	Course
		Gun	Seq.				
Sat-Oct-24	LAST CHANCE	1100	Reg.	4,10	R. Van Tassel	Bay Shore	A-I
Sat-Nov-28	Turkey Race	1200	Reg.	1,10	S. Brice	Babylon	A-H
Fri-Jan-1	New Year's Race	1200	NoSp.	10	TBA	Babylon	A-H

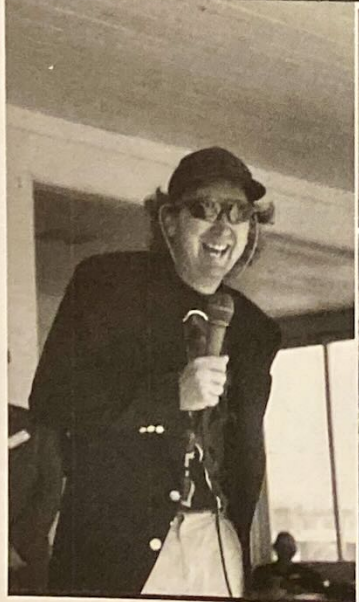
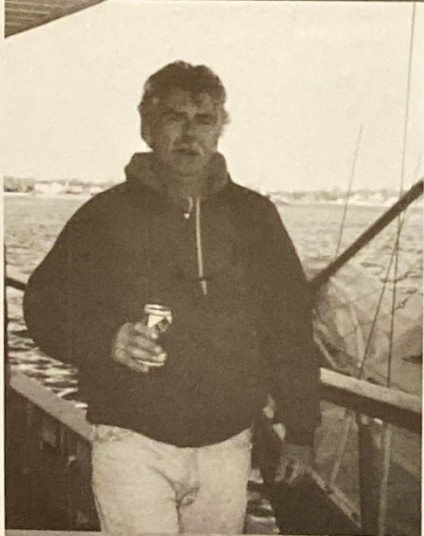
NOTES TO RACING SCHEDULE

- TBA To be announced.
1. See instructions III. D. - SPECIAL RACES.
 2. See instructions III. C. - SERIES INFORMATION.
 3. Invitational Race-Obtain information from sponsoring club.
 4. Counts for season class championship - best 5 of 8.
 5. Finish at Babylon Yacht Club.
 6. Requires registration and or fee.
 7. *This note is reserved for future use.*

TIME LIMITS

8. 14:00 First Race / 18:00 Second Race.
9. 22:30 for Twilights.
10. 18:00.
11. No time limit.







NOTES TO SOCIAL AND CRUISING SCHEDULE

1. Refer to Cruising Guide for directions to rendezvous locations.
2. Details to be published in "From the Masthead" or otherwise furnished at a later date.

CRUISES

Early in the spring, the fleet captain and the cruise committee scout among the membership for opinions and work out tentative cruise itineraries. A shorter "close-in" cruise is often suggested, such as the Peconic Bay-Shelter Island area, as well as a more extensive cruise to New England or Chesapeake Bay. A local around-the-bay cruise is usually scheduled.

The fleet captain appoints cruise captains, usually skippers who have had experience in going to the ports outlined, to work out a rough-draft itinerary which is published in the Masthead and then presented to the membership at the March meeting. Debate ensues, adjustments are made based on consensus. All is duly noted by the cruise captains, who prepare a final, more detailed itinerary. Additional meetings are held to review the itinerary and share concerns.

During the cruise, the itinerary may be adjusted to suit weather conditions or the whims of sailors and their families. Sometimes an anchorage is just too delightful to leave. Cruise captains usually try to get the entire fleet together at least once or twice during the cruise.

THE SBCC RENDEZVOUS

All hands are invited, their children, their guests and their pets. You don't have to participate in a club race to join the rendezvous raft-up that usually follows. Notifying anyone in advance is not necessary, nor must you arrive at any particular time. Each rendezvous has a designated "Host" who has been appointed by the Fleet Captain to act as host boat and will be identified by the large club burgee. If you stay overnight, check in to get credit for attendance and to be included in any special entertainment that may be planned.

RAFT-UP PROCEDURE

It has always been a tradition that no invitation is necessary to join a raft-up at any SBCC rendezvous. All you have to do is ask politely "May I come along side?"

Generally speaking, you should expect to put down your own anchor when rafting, so that boats on either side of you can withdraw with a minimum of fuss. When you wish

to cross somebody's deck to reach another boat, it's polite to ask permission and to cross via the foredeck, if possible. If you are joining a group aboard another boat, it's customary in the SBCC to bring your own drinks and to contribute to the snacks.

Do any boats remain rafted all night? Sure, but as a rule, only close friends and long time cruisemates. If in doubt, withdraw quietly and go anchor nearby.

AWARDS

The Cruising Awards are given for participation in any of the Club's organized cruises. To qualify, a yacht must anchor or tie-up with the fleet for at least 50% of the time designated for a cruise by the Fleet Captain. The Cruise Captain will submit a list of yachts eligible, based on cruise attendance records.

The Rendezvous Awards are given, at the Fleet Captain's discretion, to boats that attend a minimum number of rendezvous.

The Green Water Awards are given for a cruise of greater distance and duration than the official cruises.

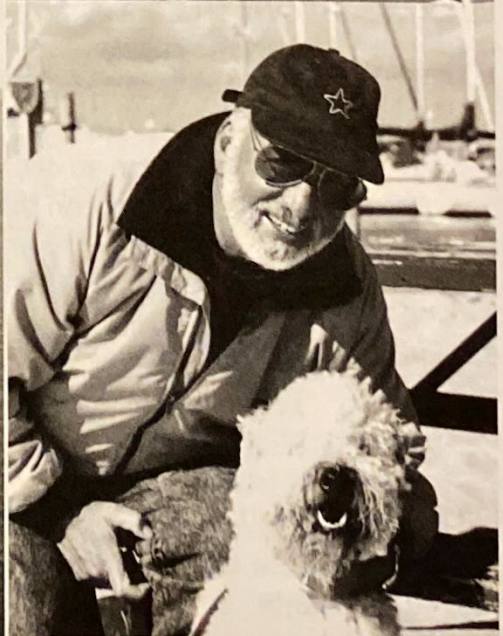
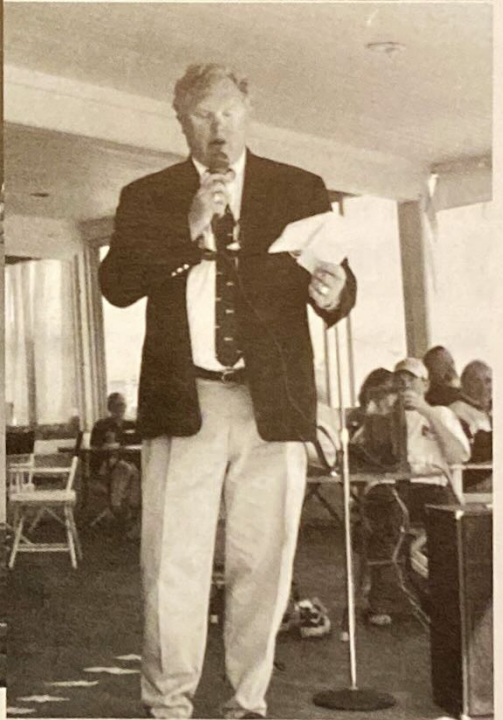
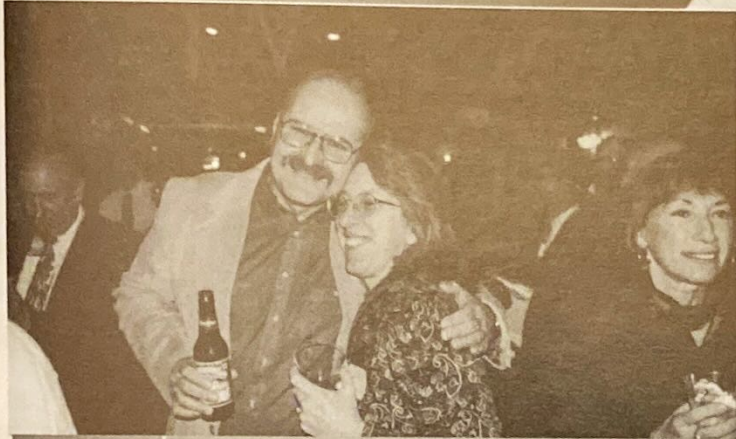
The Blue Water Awards are given only as recognition for an extended cruise off soundings. A select committee, along with the Fleet Captain, will review candidates and make this award only when they deem the cruise to be an outstanding achievement.

The Ken Kondor Trophy is awarded to the boat that does the most cruising and racing. To qualify, a boat must complete at least four races and get credit for four rendezvous. A boat gets one point for completing each race, an additional point for placing in a race, two points for attending a rendezvous and one point for hosting a rendezvous. The trophy is awarded annually at Commissioning Day.

The Sheila Daytz Trophy is awarded to the boat attending the most rendezvous in a season.







SBCC NOTICE OF RACE AND SAILING INSTRUCTIONS

I. QUALIFYING TO RACE

All properly equipped sailboats owned or chartered by SBCC members in good standing are eligible and encouraged to participate in club races provided they have requested and received a SBCC handicap and otherwise comply with the standards set forth below.

A. INTENT OF PROGRAM

It is the intent of the SBCC that all sailboats racing in club-sponsored events shall contain cruising accommodations with an enclosed cabin. It is recognized that these accommodations will vary according to the type and size of the boat. However, all sailboats are assumed to comply with the manufacturers' standard hull and accommodation plans. It is the responsibility of the owner of any vessel which has been modified or is of unique design to inform the handicap committee of the irregularity prior to racing. Such vessel will then be reviewed by the handicap committee and rated accordingly.

The SBCC handicap system assumes that a sailboat is equipped to race. It does not attempt to rate a partially equipped boat, or a boat which differs from others in its class in that it is unusually heavy, out of balance or has unusual windage (as from a dinghy on davits).

B. EQUIPMENT

As a minimum, all cruising sailboats participating in a SBCC-sanctioned club race must have the following equipment on board and in operable condition:

1. All equipment required for the participating vessel to comply with Federal, State, and local requirements.
2. The following additional items:
 - Bunks, securely installed.
 - Toilet, securely installed or fitted bucket.
 - Galley facilities.
 - At least two gallons of potable water.
 - All spars including spinnaker and whisker poles marked in accordance with the rating form.
 - Headsails of 130% LP or greater shall be measured and marked with the yacht's sail number.
 - An engine or auxiliary motor with enough fuel to return to its home port from any place on the race course.
 - Lifelines as defined by Offshore Racing Council (ORC) special regulations paragraph 6.61 thru 6.62 as published by US Sailing, dated 1994. If the boat is not equipped with lifelines as standard equipment, U.S. Coast Guard approved life jackets must be worn by all members of the crew while racing. After sunset, all life jackets must have strobe lights attached.
 - First-aid kit and manual.
 - A working VHF radio.
3. It is strongly recommended that all sailboats participating in a SBCC-sanctioned race on the Great South Bay comply with US Sailing Category 4 equipment requirements.

SBCC NOTICE OF RACE AND SAILING INSTRUCTIONS (continued)

4. Ocean Races and Night Races:

- It is advised that additional safety equipment for these races include US Sailing Category 3 equipment requirements.
- It is strongly recommended that all sailboats participating in these events should be equipped with the following additional equipment:
 1. At least two water resistant flashlights.
 2. Man overboard pole with strobe light.
- One safety harness is required for the skipper and each crew member for the Foulke Trophy Race.

C. INSPECTION POLICY AND PROCEDURES

As a condition precedent to racing in a SBCC sponsored or sanctioned event, all vessels are subject to inspection for compliance with the stated equipment requirements.

The SBCC measurer or designated assistants may conduct random inspections of all SBCC sailboats with current SBCC handicaps. These inspections will be conducted with courtesy and as efficiently as possible with permission of the owners or their representatives.

If, in the opinion of the measurer or designated assistant, the inspected sailboat does not have on board the required equipment or does not comply with the intent of the SBCC racing program, the measurer will file a formal protest with the protest committee. Boats found not to be in compliance by the protest committee will be subject to disqualification.

D. HANDICAPS

The SBCC fleet includes many different types of sailboats. In order to make race participation attractive to as many members as possible, SBCC handicap racing is offered. Under this system every yacht in the fleet, upon request to the Handicap/Measurement Chairman, is given a SBCC rating.

The SBCC Handicap System rates each yacht according to its maximum speed potential, thereby encouraging each skipper to get the best performance from his yacht.

Maximum speed potential is established for each yacht through:

- Statistical analysis of race data for consistently well-sailed boats of similar design.
- Comparison with data from other racing fleets.
- Speed-trending data from past performances.

Under the SBCC handicap system, all yachts of different design will have distinctive maximum speed characteristics from which individual handicaps are derived. Fine tuning factors are applied to yachts of the same design to account for differences in rig, prop type, sail complement, etc.

Each racing skipper is obligated to contact the Handicap/Measurement Chairman in advance of his or her first race under the following conditions:

SBCC NOTICE OF RACE AND SAILING INSTRUCTIONS (continued)

- A particular yacht is to be raced in the SBCC fleet for the first time.
- The skipper has raced another yacht bearing the same sail number during the season.
- The sail complement has been changed.
- The basic design of the yacht is modified in any way which could affect its speed potential.

E. HANDICAP APPEAL

A skipper who believes his yacht's handicap might deserve correction may request a handicap review by submitting a written request to the Handicap Committee stating the reasons he believes a review is in order. The Handicap Committee will respond in writing within 10 days and the new handicap, if any, will take effect as of the date of the written decision. Skippers who are not satisfied with their decision have recourse by appealing directly to US Sailing. The appeal to US Sailing can only be done once in each calendar year. Contact the Handicap Committee or US Sailing for the procedure and current cost.

F. SBCC HANDICAP CLASSES

Three classes, Spinnaker, Non-Spinnaker and Special Cruising Class are scored under the SBCC Handicap System.

Skippers electing to race in the Spinnaker class may use their full sail complement, and any sail combination consistent with US Sailing racing rules or special race instructions mentioned in these instructions or by special handouts.

It is the intent of the Non-Spinnaker class to restrict sail inventory use to only those sails that can be correctly flown on all points of sail. In the Non-Spinnaker class, only one headsail (either a jib or genoa of a minimum of 3-ounce material, or equivalent) may be flown in the foretriangle at any one time. Yachts handicapped as having permanent double head rigs will be permitted to fly their staysail when racing Non-Spinnaker.

Special Cruising Class members who do not regularly race and feel their boat is not "properly" equipped for racing but has the required equipment to race may enter this class when available.

Members may change classes as often as they desire, as long as it is done before the first warning signal.

G. RACING NUMBERS

Racing numbers, either US Sailing or SBCC, are required on mainsails, spinnakers and overlapping (LP greater than 130% of J) headsails, in accordance with current US Sailing rules.

H. MEMBERSHIP RESTRICTION

No boat shall race in a SBCC-sponsored event (except invitationals) unless commanded by a SBCC member or associate member.

SBCC NOTICE OF RACE AND SAILING INSTRUCTIONS (continued)

II. RACING RULES

Racing rules of the US Sailing Association shall be observed except as otherwise specified in these instructions. Burgees and other flags may be flown when racing. Government navigation buoys not stated as being marks of the course may be disregarded at the discretion of the skipper.

III. RACE PROGRAM

A. RACE SCHEDULE

SBCC sponsors numerous races and participates in various invitationals as set forth in the race schedule. See schedule for details and special notes.

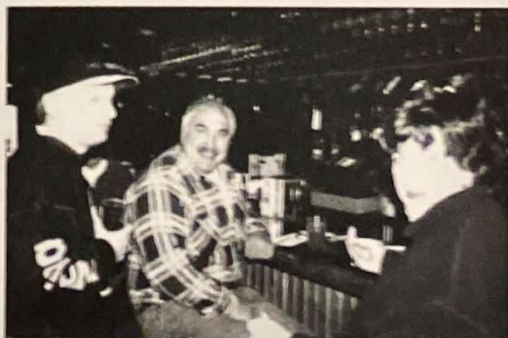
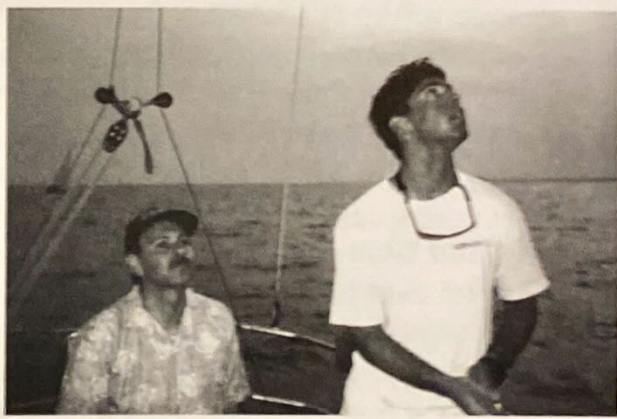
B. COURSES

Courses used for SBCC races and some invitationals are set forth on the pages following these instructions. They are grouped by starting area as follows:

"Babylon" "Bay Shore" "Nicoll Bay" "Watch Hill"

For each of these areas, a variety of courses is described below, each bearing a distinguishing letter. The course selected will be signaled from the committee boat by the appropriate letter code flag.

Any course can be reversed by code flag "R", shortened by code flag "S", or the finish changed by flag "V" as subsequently described in Section VI. B.



SBCC NOTICE OF RACE AND SAILING INSTRUCTIONS (continued)

C. SERIES RACES

Babylon Yacht Club July Invitational Series - This is a two-race series with no throw-out. The courses, starting sequence, and other race instructions will be provided by the Babylon Yacht Club and handed out by the committee boat on station prior to the first race. You must register with the yacht club to race the Babylon Yacht Club invitational series.

Bay Shore & Babylon Twilight Series - These races are three-race series. They will be scored on the basis of a yacht's best two races (except committee boat as noted in Section IV.E.). If a race is canceled and not resailed there will be no throwout for that series. The Bay Shore Twilights will have only Non-Spinnaker starts except for the Mid-Summer and Late Summer Series. The Babylon Twilights will have all regular starts except for the Spring and Wrap-up Series.

Double-Handed Races - Only two people are allowed on a boat during these races, a skipper and one crew. These races will have regular starts with Spinnaker and Non-Spinnaker classes. No size limitations are in effect. A second race will start as soon as possible after the last boat finishes the first race.

Great River Cup - This is a two-race series that will be held in Nicoll Bay with a raft-up in Great River, coinciding with a SBCC rendezvous.

Great South Bay Yacht Racing Association Race Week - This is a four-race series with one throwout. All yachts must register at the host club and pay a registration fee.

Pursuit Race - This unusual race is unique in the sense that your handicap time allowance is given to you before you cross the start line. Your handicap time allowance will be published in the *Masthead* or given to you immediately preceding the race. The time given for your boat is the time you start after the starting signal is raised. The first boat to cross the finish line after properly starting wins. The order of finish will be the actual order of boats crossing the finish line. This is a Non-Spinnaker only, two-race series.

Sayville Yacht Club Invitational Series (Jack's Trophy) - This is a two-race series sailed over two days. It will be scored by the SYC as the combination of the corrected times of the yachts participating in both races. A party is scheduled that Saturday night for all participants who pre-register. See SYC race committee for a handout and details and register with the SYC.

SBCC Class Championship Series - This is an overall season series based on the scoring of selected races. See Section IV. B.

Sprint Series - Three short races. Next race starts immediately after last boat finishes.

SBCC NOTICE OF RACE AND SAILING INSTRUCTIONS (continued)

D. SPECIAL RACES

BYC/SBCC Challenge - Babylon Yacht Club has challenged the SBCC. Each club will participate with an equal number of boats. This is a **VOLUNTEERS ONLY** race. Please register your desire to race early with the regatta chairman.

Kelly Trophy Race - One race with a regular start. The skipper must be female. Yachts with only females aboard, competing for the Patricia A. Kelly perpetual trophy, should notify the committee boat of their intentions. They must also fly a second streamer (red) from their backstay.

Single-Handed Creepstakes - Only skipper is allowed on boat during race. Two classes: 27 feet LOA and over; and under 27 feet LOA. Non-Spinnaker only.

Turkey Race - This is a post-season race, with an after-race gathering at a place determined by the race committee.

Watch Hill Family Race - A Non-Spinnaker race leaving from Watch Hill Sunday morning. Crews must sleep aboard their yacht Saturday night at Watch Hill. Start time to be announced by committee boat at dock.

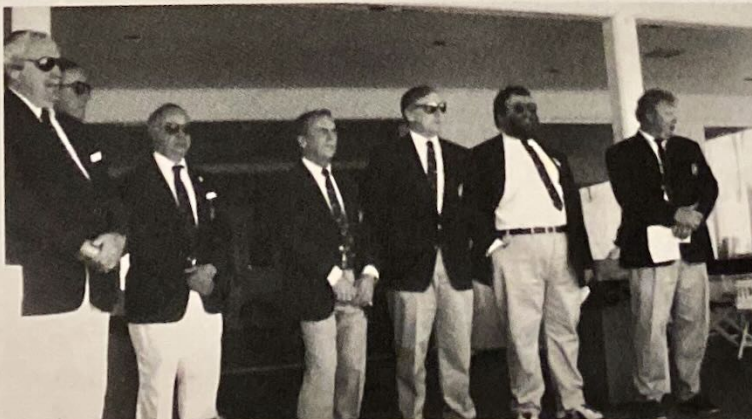
West Island Race - Nicoll Bay course H may be sailed in either direction.

IV. RACE SCORING AND TROPHIES

A. SCORING METHOD

SBCC races will be scored using the time-on-distance method. A yacht's time allowance is calculated by multiplying her SBCC handicap by the race course distance. The time allowance is then subtracted from the yacht's elapsed time yielding corrected time. The yacht with the lowest corrected time is the winner. In determining the winner of the perpetual trophies (Section IV. G), the race scorer will apply an 18 second per mile adjustment between the winner of the spinnaker class and non-spinnaker class if it is determined that the spinnaker class carried the spinnaker to advantage for at least one third of the race.

Preliminary race results are available to each participating skipper shortly after each race by e-mail or regular mail. The official results are printed periodically in the "Mast-head."



SBCC NOTICE OF RACE AND SAILING INSTRUCTIONS (continued)

B. CHAMPIONSHIP SERIES SCORING

NON-SPINNAKER AND SPINNAKER CLASS CHAMPIONSHIP SCORING

A class champion will be determined, and trophies will be awarded annually, to the yacht with the most points in each class. The boats with the highest cumulative point totals at the end of each season will receive trophies as indicated in Section IV. F. Scoring will be based on the best 5 out of 8 races designated with note 4 in the race schedule. Only yachts finishing at least 4 of these races will be eligible for a trophy. Points for these races are computed on the following basis:

- 1st place yacht receives points equal to the number of starters in the race plus 1/4 point.
- 2nd place yacht receives 1-1/4 points less than the 1st place yacht.
- 3rd place yacht receives 2-1/4 points less than the 1st place yacht, etc.

TWILIGHT SERIES CHAMPIONSHIP SCORING

Twilight races will be scored based on corrected time performance and participation. If fewer than four boats compete, the first place boat is awarded 3 points, the second place boat is awarded 2 points, and the third place boat (if any) is awarded 1 point. If more than three boats start then the following schedule will apply:

1 st place - 5 points	3 rd place - 3 points
2 nd place - 4 points	4 th place - 2 points

All finishers after 4th place receive 1 point for participation. The boats with the highest cumulative point totals, at the end of each season, will receive trophies as indicated in Section IV. F, and based on the following:

- Babylon and Bay Shore Non-Spinnaker Divisions - best 11 out of 18 races, with a minimum requirement of 9 races.
- Babylon Spinnaker Division - best 8 out of 12 races, with a minimum requirement of 6 races.
- Bay Shore Spinnaker Division - best 4 out of 6 races, with a minimum requirement of 3 races.

C. OTHER SERIES SCORING

Points for each race will be awarded on the basis of 3/4-point for first, two points for second, three points for third, etc. DNF and WDR boats will receive one point more than the number of boats in that class that started in the series. DNS and DSQ boats will receive two points more than the number of boats in that class that started in the series.

A starter in any one race of the series will be considered to have started in all the races of the series. Series position will be determined by the total points accumulated by each yacht, in inverse order.

D. SERIES TIE BREAKER

When there is a tie on points between two or more yachts, the tie shall be broken in favor of the yacht or yachts with the most first places, and when the tie remains, the

SBCC NOTICE OF RACE AND SAILING INSTRUCTIONS (continued)

most second places and so on, if necessary for all races in the series. If a tie still remains, it will be broken in favor of the boat which beat the other the last time they raced against each other, throw outs included.

E. SERIES SCORING FOR COMMITTEE BOATS

A yacht that serves as committee boat for one race of any series will receive credit towards series qualification for that race and points equal to the average of its finish positions in the other races of the series. All of the other races in the series will be included in determining the average, even those in which the yacht did not start, did not finish, and/or was disqualified. A yacht serving as a committee boat in a twilight race will receive one point for that race towards the twilight series championship.

F. RACE TROPHIES

Trophies for individual SBCC races (when not part of a series) will be awarded to each class, according to the following schedule:

Number of Starters	Trophies for
2 or 3	1st
4 through 6	1st and 2nd
7 through 14	1st, 2nd and 3rd
15 or more	1st, 2nd, 3rd and 4th

In SBCC series (including the Season's Championships), the greatest number of starters in any race will govern the number of trophies awarded for that series.

G. PERPETUAL TROPHIES

Perpetual trophies are awarded for one year only. They are awarded to the yacht with the best corrected time based on the SBCC handicap rule.

Each year the club awards eight perpetual trophies, as follows:

Cary Pearsall Trophy - Best total corrected time in the Great River Cup Series.

Commodore's Cup - Best corrected time in the Commodore's Cup race.

Cruising Club Crock - Best corrected time in the Around Long Island Regatta scored with SBCC Handicaps.

Deale Trophy - Best corrected time in the West Island race.

Foulke Trophy - Best corrected time in the Foulke Trophy race (night race).

Governor's Cup - Best total score for the Commodore's Cup, West Island and Foulke Trophy races. High Point Scoring System.

Kelly Trophy - Best corrected time in the Kelly Trophy Race by a yacht with a female skipper and all female crew.

Smith Trophy - Best corrected time in the Smith Trophy race.

Keeper cups are given to winners of these trophies and their names are engraved on the perpetual trophy. It is the responsibility of the winner of the perpetual trophy to return it by October 1st to the Trophy Chairman for engraving of the following year's winner.

SBCC NOTICE OF RACE AND SAILING INSTRUCTIONS (continued)

V. COMMITTEE BOAT ASSIGNMENTS

A. SERVING AS COMMITTEE

The SBCC depends upon the cooperation of all members. Being the Committee Boat for a race is an important responsibility. It is a job not to be taken lightly for it is the heart of a successful racing program. Reliable, timely and accurate performance is essential.

Race Chairmen are assigned by the Regatta Committee, and listed in the Race Schedule. **These assignments are obligatory.**

B. CHANGES

A race chairman may switch assignments with another Race Chairman provided that the Regatta Chairman is notified at least 24 hours before the race. Arranging such changes is the sole responsibility of the assigned skipper and does not relieve him or her of responsibility.

C. PENALTIES

Any race chairman who willfully fails to do his or her assignment shall not be scored in any SBCC race for a period of one year from the date of his or her scheduled committee boat assignment. As an alternative penalty, a Race Chairman who failed to do his or her race assignment for the first time in the racing season will be scored in SBCC races after payment of a \$100.00 fine which shall go to the SBCC General Fund.



SBCC NOTICE OF RACE AND SAILING INSTRUCTIONS (continued)

VI. STARTING LINE PROCEDURES AND RULES

A. CLASS STREAMERS

Racing yachts are required to fly streamers from their standing backstays. Streamers should measure 4"x18".

Creepstakes		All Other Races	
Class	Color	Class	Color
27 ft. LOA and over.	Blue	Spinnaker	Blue
Under 27 ft. LOA	Yellow	No-Spin	Yellow
		Special Cruising	White

For the Patricia A. Kelly Race, if the skipper and crew are female, add a red streamer to the backstay in addition to a blue or yellow streamer for Spinnaker or No-Spin.

Failure to display the appropriate streamer may be considered grounds for disqualification.

B. CODE SIGNALS

Code flags A through I are used to designate courses (see course instructions). Code flags below apply to all SBCC conducted races:

- L** - Come within hailing distance for instructions.
 - M** - ROUND or pass the object displaying this signal instead of the mark it replaces.
 - N** - ABANDONMENT, race called off (accompanied by three guns).
 - R** - Sail the designated course in the REVERSE direction. Leave all marks to the opposite hand.
 - S** - Sail the SHORT course prescribed in the course instructions. When flown after the start (accompanied by two guns), finish between the committee boat and the nearby mark of the course.
 - T** - Sail the designated course TWICE around. The "X" mark is a mark of the course the second time around. For any course that needs an explicit description of how to handle the "X" mark on the second time around, this will be done with a note in the course or by a diagram. Unless otherwise specified, leave the "X" mark on the same side as the next mark to be rounded.
 - V** - Finish at the Babylon Y.C. dock.
- Answering Pennant** - POSTPONEMENT signal (accompanied by two guns). Starts postponed fifteen minutes. Warning signal will be made 1 minute after Answering Pennant is lowered.
- First Repeater** (First Substitute) - GENERAL RECALL signal.

C. STARTING

Signals will be made at five minute intervals with each signal lowered one minute before the hoisting of the next. The visual signal governs; the gun merely calls attention to it. A red signal will be visible until one minute before the warning signal.

SBCC NOTICE OF RACE AND SAILING INSTRUCTIONS (continued)

D. STARTING SEQUENCE

Abbreviations:

- Prep - Preparatory Signal
- NoSpin - Non-Spinnaker Class Spin - Spinnaker Class
- 27(+) - Yachts with an LOA of 27 feet and over.
- 27(-) - Yachts with an LOA of less than 27 feet.
- CRU - Special Cruising Class

TIME	SHAPE	REGULAR START	NoSpin START	CREEP-STAKES START
:00	Yellow	Warning	Warning	Warning
:05	Blue	Prep	Prep	Prep
:10	Red	Start/Spin	Start/NoSpin	Start/27(+)
:15	Yellow	Prep		Prep
:20	Blue	Start/NoSpin		Start/27(-)

TIME	SHAPE	SPECIAL CRUISING START
:00	Yellow	Warning
:05	Blue	Prep
:10	Red	Start/Spin
:15	Yellow	Prep
:20	Blue	Start/NoSpin
:25	Red	Prep
:30	Yellow	Start/CRU

At the starting signal the race committee may announce "all clear" if no boats are on the course side of the starting line.

E. STARTING LINE ETIQUETTE

Racing skippers are reminded to stay clear of the starting line until the Preparatory Signal for their class. **Classes not starting are to remain clear of all yachts in the division before them.** Failure to do so may result in disqualification.

The Preparatory Signal for each class is given five minutes prior to the Starting Signal. Yachts starting with the wrong class may be disqualified.

A skipper electing to change his or her class must notify the race committee of that change before the first warning signal.

SBCC NOTICE OF RACE AND SAILING INSTRUCTIONS (continued)

F. RECALLS

The Race Committee must attempt to sound one blast of a horn or whistle and announce the sail number of each yacht on the course side at the start. **Committee boats are required to announce all clear or to announce recalls, and are encouraged to use VHF channel 72 to announce recalls.** Nearby yachts are required to pass the hail. The onus of making a fair start lies on each yacht, and failure to hear or heed a recall will not prevent the yacht on the course side at the start from being penalized. Responsibility for determining compliance with the rules rests with the Race Committee. Yachts making an improper start will be penalized by having one-half hour added to their elapsed time, whether or not they have been notified.

General Recall: If there should be a number of unidentified boats on the course side at the start, or if an error is made in the starting procedure such as significant inaccuracy in the interval between signals, the Race Committee will make the General Recall signal. The General Recall signal is the First Repeater code flag accompanied by two guns. The starting sequence for the class that has been recalled begins with the Preparatory signal which shall be signaled one minute after the first repeater is dropped. The recalled class will be the next class to start.

G. ANTI-BARGING MARK

The committee boat may use an "anti-barging mark." If this mark is used, racers shall not pass through the line formed by the anti-barging mark and the committee boat at any time—even while "starting". The penalty for infringing on this restricted line, while racing, is disqualification. Should this mark be touched without infringing on the restricted line, the yacht may exonerate herself by doing a 360 degree turn as per US Sailing Rule 31.2. If another yacht causes a yacht to touch the anti-barging mark, then US Sailing Rule 31.3 will apply. **The anti-barging mark does not change the starting line. The starting line is determined by the "X" mark (or buoy) and the white flag on the committee boat.**

H. VHF COMMUNICATIONS

VHF radio communications will be maintained during a race utilizing channel 72 for communication. Radio communications may be utilized to relay information on unusual situations during races such as postponements, recalls, withdrawals, etc. However, Race Committees may not always use VHF radio so it should not be relied on as the sole means of information. Racers should not communicate with the Race Committee from the time of the Warning gun to the time of the last class start.

VII. TIME LIMIT

Regardless of time of start, the time limit for a boat in the first class to finish will expire at 1800 except as stated in the notes to the Racing Schedule. Time limit for all classes starting after the first class will be extended so as to allow all classes to have the same amount of racing time. If any yacht finishes within the time limit for her class, it is a race for her class. Yachts finishing after the committee boat has left its station should take their time and report it to the Race Committee as soon as possible.

SBCC NOTICE OF RACE AND SAILING INSTRUCTIONS (continued)

VIII. PROTESTS

The SBCC Protest Committee operates under *The Racing Rules of Sailing*, (1997-2000), supplemented by published decisions of the US Sailing Appeals Committee. In addition, it shall hear all protests arising from violation of the Inland Rules which replace Part 2 of the US Sailing rules between sunset and sunrise.

The Protest Committee will only entertain protests made in conformity to the US Sailing rules, including:

- Display of protest flag
- Notification of protested yacht
- Notification of Race Committee
- Submission of written protest within 72 hours
- Citation of rule or rules allegedly infringed.

Protest must be addressed to the Chairman of the Protest Committee and hand delivered or postmarked within 72 hours of the conclusion of the race in question.

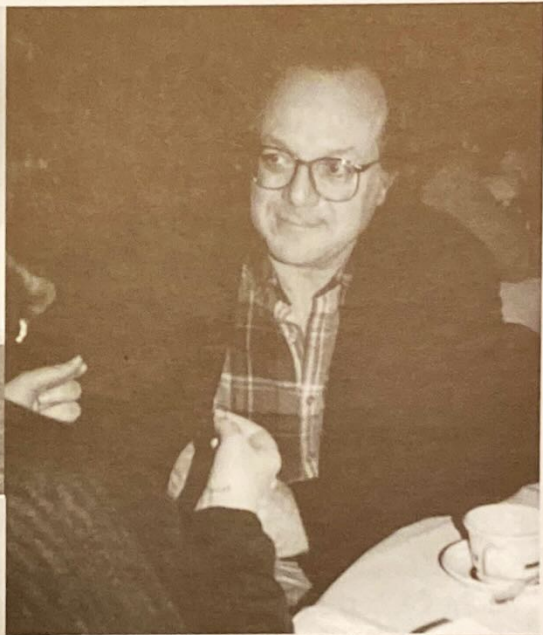
IX. SAFETY

The safety of a vessel and her crew is the sole and inescapable responsibility of the skipper, who must do his or her best to ensure that the yacht is fully found, thoroughly seaworthy, and manned by an experienced and physically-fit crew. He/she must be satisfied as to the soundness of hull, spars, rigging, sails and all gear. The skipper must ensure that all safety equipment is properly maintained and stowed, and that the crew members know where it is kept and how it is to be used. He/she must have all safety equipment required by the U.S. Coast Guard and should have the racing equipment suggested by US Sailing. The South Bay Cruising Club disclaims any liability for the seaworthy condition or operation of a yacht, the safety of its crew, or the absence of suitable safety equipment aboard a yacht, for which the owner has sole responsibility.

It is the exclusive responsibility of each skipper to decide whether or not to start, continue, or drop out of any event. The South Bay Cruising Club does not assume any liability for the decision of any participant. Because of the increased costs of all vessels and the tendency to litigate all accidents, whether liability exists or not, the Board of Governors of the South Bay Cruising Club recommends that all owners and skippers carry liability as well as hull insurance to protect all parties from the financial consequences of an accident.

For answers to questions regarding minimum U.S. Coast Guard equipment requirements, please call the following:

Coast Guard Safety Hotline
Weekdays between 8am and 4pm M-F
1-800-368-5647



SBCC NOTICE OF RACE AND SAILING INSTRUCTIONS (continued)

RACE COURSES

SPECIAL COURSE INSTRUCTIONS

1. When the Robert Moses Causeway is in the course, the center span must be used.
2. When the designated course is signaled to be sailed twice around, the "X" mark is a mark of the course the second time around. It is to be left on the same side as the next mark of the course unless otherwise specified.
3. For all Yacht Club Invitationals, see special Sailing Instruction for the event.
4. Courses with an asterisk should not be sailed twice around.

BABYLON COURSES

Start and Finish established by the Race Committee (RC) between Willets Creek and Keith Canal unless otherwise specified. If the Finish is signaled to be at the Babylon Yacht Club dock (FBYC), the RC must signal code flag "V" and determine the added course distance.

MARKS

- "X" an Orange or White SBCC Special Buoy
G "1" Flashing Green No. 1 in Great Cove
G "3" Flashing Green No. 3 off Bayberry Point
R "6" Red Nun No. 6 just East of Robert Moses Causeway
G "9" Flashing Green No. 9 off Oak Island Channel
G "11" Flashing Green No. 11 off Bay Shore

COURSE A

3.83 nm

Start
G "9" (port)
R "6" (port)
Finish

COURSE B

5.63 nm

Start
G "9" (port)
R "6" (port)
"X" (port)
G "9" (port)
Finish

COURSE C *

4.24 nm

Start
R "6" (port)
"X" (port)
G "9" (port)
Finish

COURSE D

7.72 nm

Start
G "9" (port)
G "1" (port)
Finish

COURSE E

9.52 nm

Start
G "9" (port)
G "11" (stbd)
G "3" (port)
G "1" (port)
R "6" (stbd)
Finish

COURSE F *

9.90 nm

Start
R "6" (port)
G "11" (stbd)
G "3" (port)
G "1" (port)
"X" (port)
G "9" (port)
Finish

SBCC NOTICE OF RACE AND SAILING INSTRUCTIONS (continued)

RACE COURSES

SPECIAL COURSE INSTRUCTIONS

1. When the Robert Moses Causeway is in the course, the center span must be used.
2. When the designated course is signaled to be sailed twice around, the "X" mark is a mark of the course the second time around. It is to be left on the same side as the next mark of the course unless otherwise specified.
3. For all Yacht Club Invitationals, see special Sailing Instruction for the event.
4. Courses with an asterisk should not be sailed twice around.

BABYLON COURSES

Start and Finish established by the Race Committee (RC) between Willets Creek and Keith Canal unless otherwise specified. If the Finish is signaled to be at the Babylon Yacht Club dock (FBYC), the RC must signal code flag "V" and determine the added course distance.

MARKS

- "X"** an Orange or White SBCC Special Buoy
G "1" Flashing Green No. 1 in Great Cove
G "3" Flashing Green No. 3 off Bayberry Point
R "6" Red Nun No. 6 just East of Robert Moses Causeway
G "9" Flashing Green No. 9 off Oak Island Channel
G "11" Flashing Green No. 11 off Bay Shore

COURSE A

3.83 nm

Start

G "9" (port)

R "6" (port)

Finish

COURSE B

5.63 nm

Start

G "9" (port)

R "6" (port)

"X" (port)

G "9" (port)

Finish

COURSE C *

4.24 nm

Start

R "6" (port)

"X" (port)

G "9" (port)

Finish

COURSE D

7.72 nm

Start

G "9" (port)

G "1" (port)

Finish

COURSE E

9.52 nm

Start

G "9" (port)

G "11" (stbd)

G "3" (port)

G "1" (port)

R "6" (stbd)

Finish

COURSE F *

9.90 nm

Start

R "6" (port)

G "11" (stbd)

G "3" (port)

G "1" (port)

"X" (port)

G "9" (port)

Finish

SBCC NOTICE OF RACE AND SAILING INSTRUCTIONS (continued)

COURSE G*

3.83 nm

Start between committee
boat and G "9"
"X" located off Willets or
Keith Canal (stbd)
R "6" (stbd)
Finish at Start line

COURSE H*

5.63nm

Start between committee
boat and G "9"
"X" Located off Willets
or Keith Canal (stbd)
R "6" (stbd)
G "9" (stbd)
"X" Located off Willets
or Keith Canal. (stbd)
Finish at Start line

* DO NOT SAIL TWICE AROUND

BAY SHORE COURSES

Start and Finish established by the race committee 1/3 nm southeast of the
Brightwaters Canal entrance.

MARKS

- "X" an Orange or White SBCC Special Buoy
- G "1" Flashing Green No. 1 in Great Cove
- G "3" Flashing Green No. 3 off Bayberry Point
- R "4" Flashing Red No. 4 in North Channel
- R "6" Red Nun No. 6 just East of Robert Moses Causeway
- R "8" Flashing Red No. 8 off Nicoll Point
- G "9" Flashing Green No. 9 off Oak Island Channel
- R "10" Flashing Red No. 10 in West Channel.
- G "11" Flashing Green No. 11 off Bay Shore
- G "35" Flashing Green No. 35 off Blue Point
- FBYC Finish at the Babylon Yacht Club

COURSE A

5.77 nm

Start
R "6"(port)
G "11" (stbd)
G "3" (port)
Finish

COURSE B

5.03 nm

Start
G "11" (port)
R "4" (port)
Finish

COURSE C *

4.32 nm

Start
G "11" (port)
G "3" (port)
G "1" (port)
G "11" (stbd)
Finish

SBCC NOTICE OF RACE AND SAILING INSTRUCTIONS (continued)

COURSE D

3.34 nm

Start

R "10" (port)

G "3" (port)

Finish

COURSE E *

6.44 nm

Start

R "6" (port)

G "11" (stbd)

G "3" (stbd)

R "10" (stbd)

Finish

COURSE F

9.00 nm

Start

R "8" (stbd)

R "4" (port)

R "10" (stbd)

Finish

COURSE G

(Foulke)

29.29 nm

Start

G "9" (port)

G "11" (stbd)

G "3" (stbd)

G "35" (port)

G "11" (port)

FBYC Finish

COURSE H

9.09 nm

Start

R "6" (port)

"X" (port)

R "6" (port)

G "11" (stbd)

G "3" (port)

Finish

COURSE I

7.45 nm

Start

G "9" (port)

G "1" (port)

Finish

*DO NOT SAIL TWICE AROUND



SBCC NOTICE OF RACE AND SAILING INSTRUCTIONS (continued)

NICOLL BAY COURSES

Start and Finish established by the race committee in Nicoll Bay.

MARKS

"X"	an Orange or White SBCC Special Buoy
G "3"	Flashing Green No. 3 off Bayberry Point
R "4" NC	Flashing Red No. 4 in North Channel
R "4"RC	Flashing Red No. 4 in Range Channel
R "8"NP	Flashing Red No. 8 off Nicoll Point
G "9"	Green Can No. 9 off Nicoll Point
R "8"	Flashing Red No. 8 off West Fire Island
R "10"	Flashing Red No. 10 in West Channel
G "19"	Flashing Green No. 19 off Point O'Woods
R "24"	Flashing QR Red No. 24 in East Channel
GR "EN"	Flashing Green, Green/Red EN in mid-Nicoll Bay
R "30"	Red Nun No. 30 in mid-Nicoll Bay
RG "EW"	Red & Green Quick Flasher EW off Saltaire

COURSE A

6.15 nm

Start

R "8" NP (port)

R "30" (port)

Finish

COURSE B

5.96 nm

Start

GR "EN" (stbd)

R "4"RC (stbd)

Finish

COURSE C

6.56 nm

Start

R "4" RC (port)

R "30" (port)

Finish

COURSE D

5.58 nm

Start

GR "EN" (stbd)

R "8" NP (stbd)

Finish

COURSE E

8.16 nm

Start

R "8" NP (port)

GR "EN" (stbd)

R "24" (stbd)

Finish

COURSE F

16.90 nm

Start

G "19" (stbd)

G "9" (port)

R "10" (port)

R "4"NC (stbd)

G "9" (port)

Finish

COURSE G

13.25 nm

Start

R "8"NP (port)

GR "EN" (stbd)

R "24" (stbd)

R "4"NC (stbd)

G "9" (port)

Finish

COURSE H

(WEST ISLAND)

15.6nm

Start

G "9" (stbd)

R "4"NC (port)

R "10" (port)

RG "EW" (port)

R "8" (stbd)

G "19" (port)

Finish

SBCC NOTICE OF RACE AND SAILING INSTRUCTIONS (continued)

WATCH HILL COURSES

Start established by the race committee in the vicinity of the north end of the channel to Watch Hill.

MARKS

- R "4"NC Flashing Red No. 4 in North Channel
- G "9" Green Can No. 9 off Nicoll Point
- R "10" Flashing Red No. 10 in West Channel
- GR "EN" Flashing Green, Green/Red EN in mid-Nicoll Bay

COURSE A

9.74 NM

Start

R "4" NC (port)

Finish between R "10"
and Committee Boat

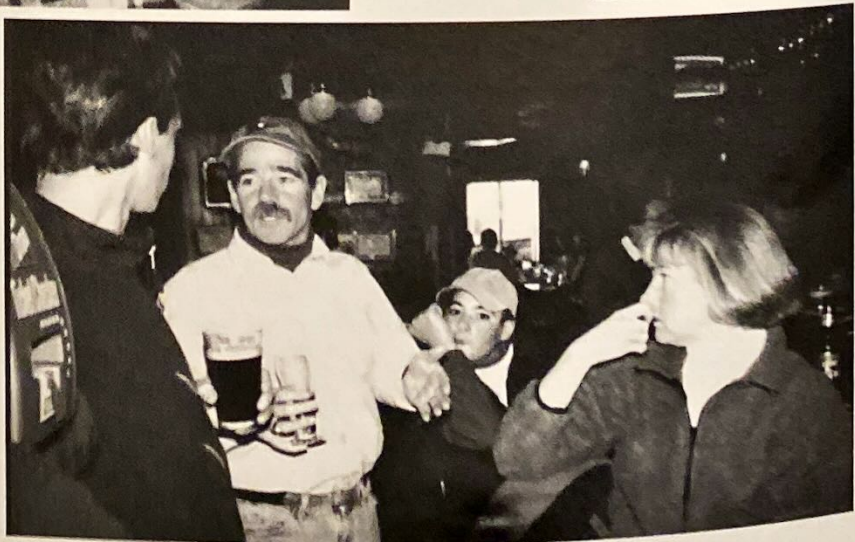
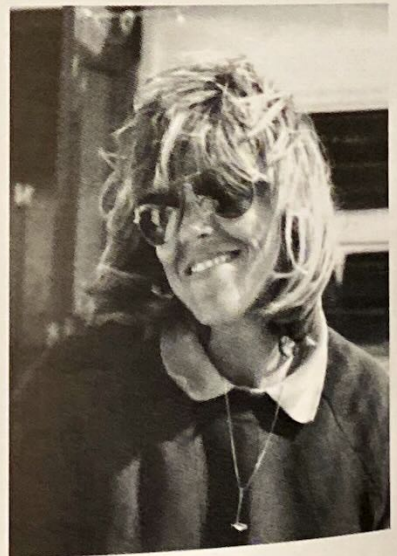
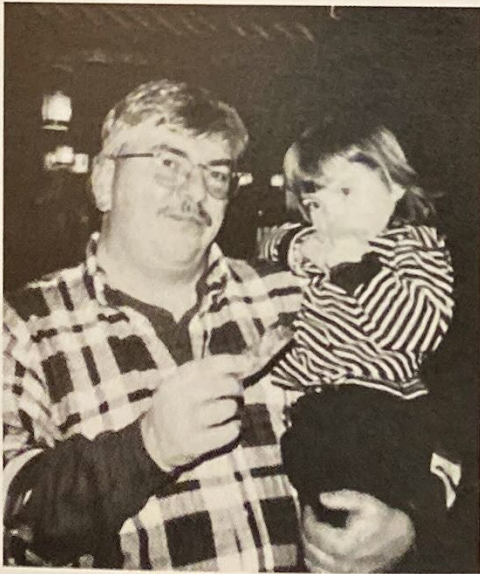
COURSE B

6.93 NM

Start

GR "EN" (port)

Finish between G "9"
and Committee boat



SBCC SHIPS STORE

The storekeeper has the following items available to members at the prices indicated. If you wish to make a purchase, please contact the storekeeper, Barbara Connor at 665-7266.

SBCC BURGEES -----	\$14.00
BASEBALL CAPS -----	\$6.00
CRUISING GUIDES -----	\$2.50
DECALS -----	\$1.00
SWEAT SHIRTS -----	\$18.00
GOLF SHIRTS -----	\$17.00
TEE SHIRTS - SBCC -----	\$10.00
SAILBOAT TEE SHIRTS -----	\$10.00
SAILBOAT TEE SHIRTS - XXL -----	\$11.00
FANNY PACKS -----	\$9.00
CAN HUGGIES -----	\$3.00
SBCC TIES -----	\$4.00
SNACK PLATES -----	\$2.00
YEAR BOOKS -----	\$5.00

Prices are subject to change according to suppliers' prices.



Past Commodore's Year In Review

I have always felt that both the real strength and weakness of the South Bay Cruising Club was the absence of a clubhouse. On the positive side, this sets us apart from the other yacht clubs in that our focus is on the use of our boats and not the maintenance of a building affixed to our natural enemy - terra firma. The differing ways we use our boats, however, leads to some natural cliquishness. Those of us who race gravitate to one another. Others regularly rendezvous together on rafts of four to five boats and cruise together with the same group. There is nothing inherently wrong with this but it is the lack of a focal point like a clubhouse that impedes these diverse groups from regularly interacting with one another. As a result, from time to time there have been petty slights and tension among us.

The commodores before me addressed these issues in varying ways for as long as I have been a member. Racing dues were abolished; a cruising class was introduced in the racing program, and both racing and cruising activities are now recognized with awards. My administration was the beneficiary of these efforts. I sense that past slights and disagreements have been ameliorated or set aside over the last few years and we have become a group of good friends. The catalyst for this, in my opinion, has been the entertainment committee. The warmth of Daisey and Bob Garben, and Sally and Bill Eilbeck rejuvenated the social program. The parties and other events have been extremely well attended by a broad spectrum of our membership. The spring cocktail party had an air of formality and real touch of class. For the fall cocktail party, we returned to our historical roots and had a "Bing Crosby like" old fashioned clambake in Steve Brice's boatyard. There was a reggae band at the blast and the holiday party was resplendent and marked with good cheer. It seems the entertainment committee created that venue for us to interact. Perhaps more than ever before, I felt that the members of the cruising club were just a bunch of good friends. I believe we have come together and in the inimitable words of Martha Stewart -- "it's a good thing." I thank all of you for your commitment to our club, particularly my fellow officers, the fleet and regatta captains, and the committee chairpersons for their camaraderie and hard work.

Sincerely,

Barry Pittman
Past Commodore





The Cruising Year in Review

by Michael Kohl

1997 was a year with outstanding rendezvous attendance. Over 70 boats attended rendezvous even though some of the later ones were canceled due to inclement weather. Three club cruises went out with two leaving the bay. The summer of '97 is to be remembered for its late start and lovely weekends once summer bothered to arrive. The logs for the three cruises are reproduced below.

ONE-WEEK GREAT SOUTH BAY CRUISE - From the logs of *Voodoo Lady* and *Sea Dream* (Ed & Carol Sowden and Bill & Barbara Dunleavy)

Sunday was an excellent day and we rafted and had cocktails on *Sea Dream* and *Voodoo Lady*.

Monday brought a rainy morning and a forecast of strong north winds forcing us to revise the itinerary and sail to Watch Hill rather than Talisman as previously scheduled. All present at Watch Hill attended a cocktail party including franks, sauerkraut, onions and wine, compliments of the cruise captains and their first mates. Two Fire Island deer attended also. Special credit must be given to *Broadbill*, *Charisma*, and *Our Time* since they followed the original schedule and spent an uncomfortable night at Talisman.

Tuesday provided a pleasant sail to Bellport and an excellent dinner at the Chowder House followed by coffee and cake on *Voodoo Lady*. They also provided a beautiful moonrise.

Wednesday's forecast predicted winds south to southeast 15-30 knots. We decided to head for Atlantique for a secure mooring. The wind held from the southeast and we beat the rain. Shortly after our arrival the rain commenced and the wind gusted to 35 knots. A very rocky and uncomfortable night.

Thursday the wind laid down and the rain stopped. A little sun and the wind clocked to the south. Cocktails on the beach with the balance of the franks and wine enjoyed by all.

Friday - Some boats stayed at Atlantique, some planned on attending the rendezvous at Hemlock, some went to Great River and some went home.

Even though we did not have typical August weather and it was not suitable for swimming or sunbathing, we had a great cruise and the opportunity to socialize with our fellow sailors.

TWO-WEEK CRUISE TO RHODE ISLAND AND CONNECTICUT - From the log of *Vixen* (Frank & Barbara Peter)

Day one, Great South Bay to Cormorant Point, we ran aground, ran aground, ran aground. If your boat draws 4 feet or more don't go inside at low water! At this point, the fleet consisted of *Counterpoint*, *Lady Catherine [Brown Eyes]*, *Vixen* and former club members on *Windcall*.

We made Block Island on day two and found it great as usual but don't count on getting fuel if the "big boys" decide to tie up at the fuel docks, and the town moorings might have an "occupied" orange buoy attached. Pick up the mooring with the orange buoy, secure your boat and make a bee-line for the harbor master's shack and pay. Do not mention anything about the orange buoy. These buoys either have to do with the weight of the boats, these being for heavier boats, or being saved for those "in the know," or whatever, depending on who you talk to. They do not have anything to do with the mooring being occupied as far as we could tell. Also while in Block, we met up with *Jubilation* who also had Ann Sanalidro and her son Ronald aboard, and *Catharsis*, *Bonnie Lassie* and *Gracie Day*.

On the way to Newport, we got to do some sailing. We were joined there by *Cee-J2*.

Newport to Mystic, we motored in the rain. We ate at the Seamen's Inne and celebrated Lori's birthday. Lori is a new member aboard *Lady Catherine [Brown Eyes]*.

On our lay-day in Mystic, we toured the museum and had pizza in the Mystic Pizza; not the one from the movie but the one about three blocks east of the museum, and it was the best ever. Also, the fellow who runs the place has some very interesting stories about the people who come in.

From Mystic, we motored to Essex. Our lay-day there started out very windy as a result of the tropical storm Danny, then the wind died and the bugs came ("the grass is always greener"). Joel from *Counterpoint* toured the boat yards. (We think he is "getting serious".)

We left Essex for Lake Montauk where we were met by Larry and Diane Lowy (*First Light*) who drove out to have dinner with us at Gosmans.

From Montauk we went to Tiana Bay to "over-night" and the next day headed back getting as far as the western-most bridge in the Westhampton Canal. An auto accident left it without power so we had a nice two-hour lunch and Joel went swimming.

It was a relatively quiet cruise which we appreciated since we had a "new / old" boat and it was a "first cruise," "first inlet," "first ocean," "first fog," "first sub," "first containership," etc. for *Lady Catherine [Brown Eyes]*.

And of course, we were discussing "next-year's cruise to the Chesapeake" on the way back.

TWO- AND THREE-WEEK CRUISE TO CAPE COD AND THE ISLANDS - From the log of *Jubilation* (Ed & Joan Petroske)

"The Favorable Current/No Rain Cruise"

Left Sore Thumb July 4 morning with *Saga*. Nice weather and we actually sailed while in the ocean! After docking at the Montauk Yacht Club, we all headed for Gosmans. There was immediate seating which had never happened before in anyone's memory. Afterwards we went dancing under the stars at the Star Island Marina just down the road.

The next day had a swell sail to Block Island, picked up a mooring and were soon doing the Ballard's Boogie with lobster and beer and music. The place was empty. Where are the people?

Next stop - Newport. We discovered where the people were in good old Newport. Although there were empty slips at the marina, the town was bustling. Noticed an abundance of mega-motoryachts, 100 feet and more. Dinner was a smashing success. We met "Catharsis" at Sardillos. The happy maitre d' and an entertaining waitress brought out the playfulness in all. It was such a hilarious, uplifting, jolly time that most of us had no idea what we had to eat or how good it was.

Jubilation went back to Montauk to change crews, trading daughter Susan who was with friend Ken McNally and now great big grandson Kyle, for Ann Sanalidro and son Ronald. Headed straight for Cuttyhunk with a following sea, averaged 7 knots and arrived late enough that all moorings were taken, inside and out. Spent the next hour anchoring. After five attempts with fifty feet of chain, a 22-lb hi-tensile Danforth, 45-lb CQR - nothing would dig in. Finally reverted to the 33-lb Bruce lunch hook and it dug in immediately and firmly. How do you figure? Apparently grass is abundant. A 75 footer had to re-anchor and pulled up a ton of grass with the first try. Ashore in the AM. The new Cuttyhunk has less to offer than ever - no restaurant and more cars.

Next stop, Edgartown for *Jubilation* and Nantucket for *Catharsis*. Plenty of town moorings. Picked one up right off the yacht club. Took the bus to Oak Bluffs and played entertaining miniature golf with odd instructions with each hole such as spin around three times with your head on the handle of the club before hitting the ball. Great fun! The next day had breakfast at a back street B&B in their sun dappled, tree shaded garden.

After an easy sail across Vineyard Sound to Falmouth, we picked up a reserved slip at the town marina. Here we found courteous service and clean, attractive bath-rooms and a laundromat nearby. We all walked to town for a meal at Cape Cod Chicken (like Boston Market), watched strange bowling called candle pin, and went berserk at the Video Game Center.

The next day, up at sunrise to make slack at Woods Hole and for the sail down Buzzards Bay to Newport. No wind, but once again friendly current. *Jubilation* is getting more like a motor boat - 7.5 knots over the ground can be habit forming. After picking up a mooring off the Newport Yacht Club, all went in different directions - haircuts, mansions, shopping and much needed down time for the Captain. Spent

the evening on the porch of the Moorings enjoying a delicious dinner.

On the morrow, took off for Block Island late, to allow fog to lift which it did until we were off Pt. Judith when it came back with a vengeance. One captain on the VHF, when asked about visibility replied "What visibility?" It became so dense that it was like rain, forcing us to don foul weather gear. We used up two cans of fog horn stuff. Thank goodness that some thoughtful SBCC Fleet Captain of the past gave us a manual fog horn as a Cruise Captain trophy. The radar picked up all adversaries and after two hours of this nerve wracking, rushing about and tooting and listening, slowing down and speeding up, we picked up the Block Island 1BI with radar, followed the shore line towards the Great Salt Pond jetty with still zero visibility. Suddenly, the fog lifted completely revealing the fairway bell buoy 100 yards off our bow and unlimited sunshine and visibility in the Pond. Another miracle!

Fully recuperated, the next day we rented bikes and went to Mohegan Bluffs Beach. There is now a stairway going down and up, of course, with 130 steps, but well worth the trip. The surf was mild and beautiful, the beach clean and virginal, and our picnic lunch almost like the good old days. We did Ballard's one more time and discovered that the Chicken Dance is alive and well.

Once again, had trouble finding the ruins off the north end of Gardiner's Island. Arrived at Three Mile Harbor late afternoon along with hundreds of other vessels all arriving for the belated annual East Hampton 4th of July fireworks. We were obliged to get in line to enter the inlet. Although some distance from the launching pad, we partied and ood and aahed with gusto.

At this point, the Sanalitros left and *Jubilation* headed to Greenport and eventually through the Gut past the notorious Plum Island to Port Jefferson and then on to Glen Cove, always aided and abetted by a friendly current averaging 7-8 knots over the ground. After a two-day delay due to inclement weather, went through New York City waterways with dispatch, always aided by you know who, and pulled into Sheepshead Bay. Here we made a marvelous discovery. Lundys, the famous seafood restaurant, frequented by our parents and closed down for many years, has re-opened. We had a spectacular surf special!

Through Fire Island Inlet on the 21st day - a 3 weeker for *Jubilation* and something less for the rest.



Racing Year in Review

by Jim Reichel

This past racing season was blessed with great weather and fairly decent winds. Every race this year went off without a hitch and no major protests on record. The scoring results came out by e-mail which made going to your computer more exciting to see how well you fared the night before. Certainly we are moving in the right direction and our racing program is improving.

The year started out slow with a poor turnout in the Sprint Series. This series proves to be fun with three quick races and helps refresh your ability to start and maneuver your boat after the long winter. Our year officially started out with the Creepstakes singled-handed race, and this year we had an incredible turnout. In the 27'+ class, *Silver Bullet*, *Amethyst* and *Clipper* swept up the first three places, while *Red Dog*, *Mirage*, and *True Love?* won in the under 27' class. This year, for a change, we were able to make it to the commissioning ceremonies.

The Twilight Series started early this year with a quick three-race no-spin series and again showed signs of the high level competition and exciting racing that is in our club. Leads in the races changed constantly and points accrued weekly for the overall championship. The format of having four races in a series and an overall championship for the series made it worthwhile to race even if we could not make all the scheduled races. Winning was within the grasp of everyone who came out to participate. The second annual Double-Handed Race was run and well attended. This race seems just as challenging as the Creepstakes and a little more exciting because you can fly spinnakers. This year's race included a new twist by making this race into a four-race series with spring and fall race dates. Fourteen boats competed with boats coming from both sides of the bridge to race. *Silver Bullet* took first in the spinnaker division and *Cherry Pi* dominated the non-spinnaker division in the spring series.

At the end of June, the SBCC Ocean Race was held. This long waited-for event was used to unveil the inflatable marks and set up of a real triangular course with a windward leg. Seems everyone got involved in the act with an appearance from the cruising class as well as the police inquiring what the orange pyramids were going to be used for. In this race Paul Rendich's *Clipper* took the win in a photo finish, *Quest* in the non-spinnaker division and *Carefree* in the cruising division. The somewhat decent turnout made the race a worthwhile effort and Michael Kohl's help as committee boat was appreciated.

After the Ocean Race, the second part of the season was just kicking in. The Sayville Yacht Club's Jack's Trophy, the Commodore's Cup and Pursuit Series made for some interesting racing. Most memorable was the Sayville Yacht Club Jack's Trophy with SBCC boats winning all the silver in the non-spinnaker division. *Amethyst* (1), *Silver Bullet* (2), and *Cherry Pi* (3) completed the sweep and even managed to finish ahead of the less competitive spinnaker class. This race, with a better than average turn-out, was a very well run event and certainly one to come back to. At the end of the month, the Foulke Trophy Race was held. This race was held earlier than usual because of El Nino; this year we had wind all the way and we were able to finish in the same day. *Amethyst* continued its wining streak and *Dragon Fly* won the non-

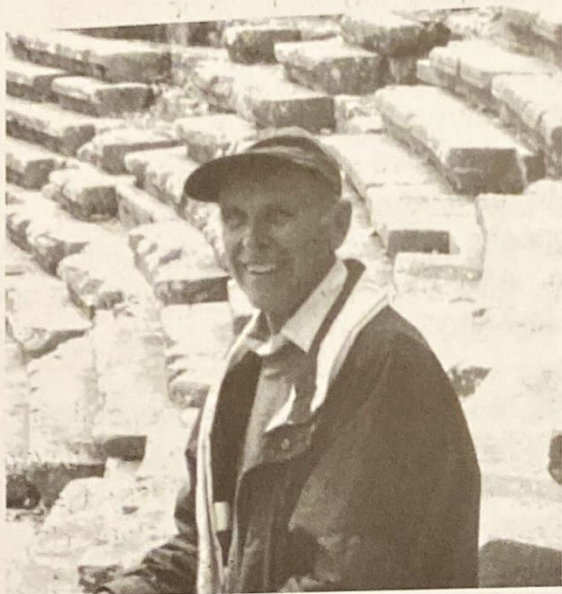
spinnaker division. Truly, what the event is supposed to be like. The third part of the season and by far the most exciting was the Great River Race Series. Not everyone completed the whole event, but many at least participated in some part of it. The event consisted of the Smith Trophy Race, the West Island Race and a few day races in between. It was fun and we had plenty to do after the races. The West Island Race saw a very large turn-out and some outstanding finishes. At the finish line the spinnaker division had almost a virtual three-way tie for first place going across the line. The lucky boat to catch the best wave was *Silver Bullet*, then *Amethyst* and finally *Clipper*. No more than five seconds or so divided them into first, second, and third. A newcomer to the winner's circle was Dr. Soranno. His crew on *Atsa Nysa Too* sailed opposite of the spinnaker boats and pulled off a commanding lead to win his division. After these races, the season went into sort of a lower gear and just cruised with a few short day races.

During this break period, the three J/27's went up to the North Shore to Connecticut for the J/27 North American Championship. Very light wind conditions plagued *Silver Bullet* while *Amethyst* did slightly better. To our surprise, and delight (I guess), Paul Rendich and *Clipper* pulled off an awesome second place in the championship. He certainly had the "right stuff." The boats hung out up there for the rest of the fall, competing in local club races and surprisingly doing very well. If there was wind, we stood a chance to win. We sailed in the Brut Cup in N.Y. Harbor and learned a lesson about the "home team" advantage. We were brutally beaten by the race committee and its difficulties in running a scoring program. In the future, always put down your hailing port as the same place the hosting yacht club is from. We managed to survive up there for five weeks and competed in some very prestigious races. We pulled off a third at American Yacht Club, losing first by two points. We capped off our season with some really spectacular sailing in the Manhasset Bay Fall Series. Some hair-raising races in brutal waves and wind conditions made it fun and also pushed the envelope of survival. What was nice was coming out on top with a second place win.

All during our escapades on the North Shore, sailing was continuing on the bay. The twilight races were winding down with quite a mix in the leaders. *Dragon Fly*, *Clipper*, *Ericsean*, *Jam V*, *Drumshanbo*, and *Bionator* were winning. The twilight champions in Babylon were *Mirage*, *Amethyst* and *Clipper* in spinnaker and *Dragon Fly*, *Ericsean* and *Bionator* in non-spinnaker. The Bay Shore side was not as well attended and only had a few boats qualify in the non-spinnaker division. *Cherry Pi*, *Annie B* and *Drumshanbo* sailed away with the honors there.

The final chapter of the year was the Turkey Race. This race was the grand finale. Slightly shifty winds made for some unusual sailing conditions that we really didn't see all year. The committee boat hosted a "raft-up" party in conditions that were ideal and had all the racers together for one last get-together. Seventeen boats rafted in the middle of the bay. It had to be a great sight to those on shore. All off of one anchor and hanging off the stern of a giant charterboat. Paul and his efforts to out-do any other committee boat had his charterboat and friends pressed into service one more time. An awards ceremony after the race capped off a memorable event and a great season. It was sad to give up sailing for a while.

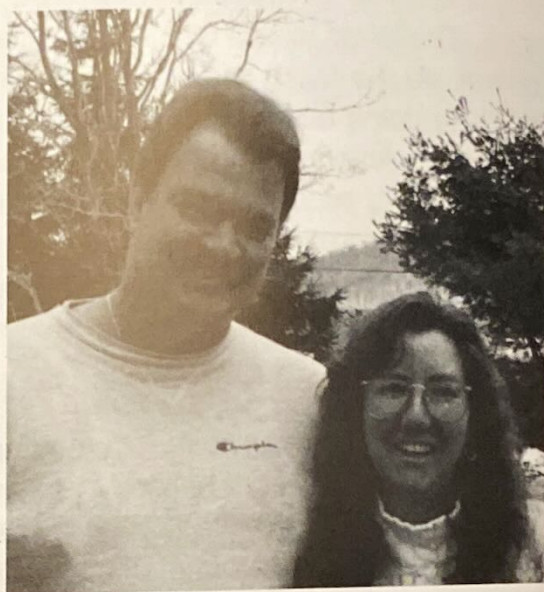
1997 SIGNIFICANT ACCOMPLISHMENTS



Blue Water Award

Eric Forsyth

Fiona

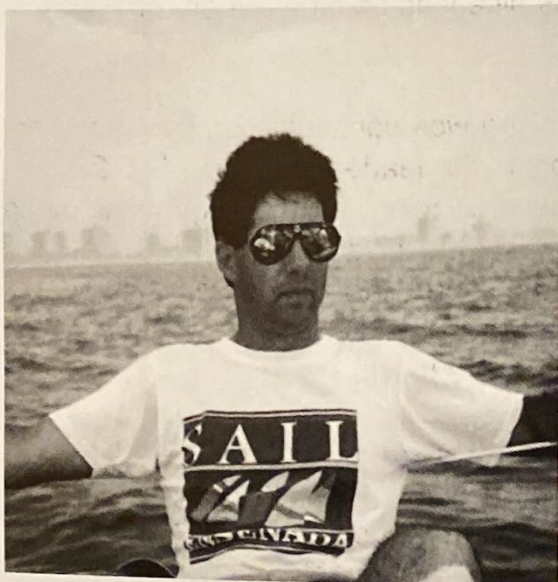


Sheila Daytz Award

John Rambold &

Corinne Conger

Cee-J2



Spinnaker

Class Championship

Doug Davies

Amethyst



Non-Spinnaker

Class Championship

John Davis

Dragon Fly



1997 RENDEZVOUS AWARDS

Ken Kondor Trophy - Silver Bullet - James Reichel

Sheila Daytz Award - Cee-J2 - John Rambold & Corinne Conger

18	Rendezvous Cee-J2	124	John Rambold & Corinne Conger
17	Rendezvous Salthart	4463	Joseph & Dorothy McCormack
14	Rendezvous Bagheera	2016	Ron Schaper
13	Rendezvous Tranquilizer	10207	Dick Daytz
12	Rendezvous Njord	144	William & Sally Eilbeck
10	Rendezvous Quest Vixen	24191 99	Robert & Cynthia Van Tassel Francis & Barbara Peter
9	Rendezvous Carefree Lady Barbara	1855 1395	Richard & Ginny LaTorre Jack & Barbara Nielsen
8	Rendezvous Fenian Firstlight	1858 110	Edwin & Kathleen Simmons Larry & Diane Lowy
6	Rendezvous Balance Emerald Seas Jam V Leprechaun Silver Bullet Zepher	9194 39 42281 112 42370 705	Steven & Kathryn Ossandon Frederick & Joan Cornman Joseph & Annmarie Dudek Dennis & Barbara Connor James Reichel Arthur & Marilyn Feldman
5	Rendezvous Kariana Laurie Jean Moonraker Nauti Lady Saga II	283 641 621 33 190	Dennis & Adriana Krug Gaspere & Laurie Messina Bob & Ronnie Martorana Frank & Pauline Roan Raymond & Jo Rothaug

1997 RENDEZVOUS AWARDS (continued)

4 Rendezvous

Busman's Holiday	732
Catharsis	999
Presto	6401
Fox	150
Lady Barbara	105
Our Time	302
Pzaz	254
Silhouette	1260
Slim	62

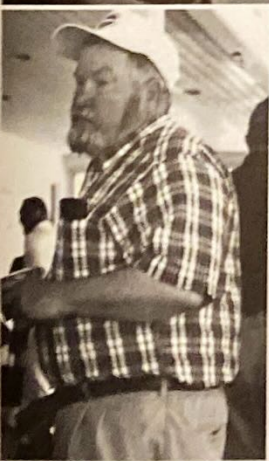
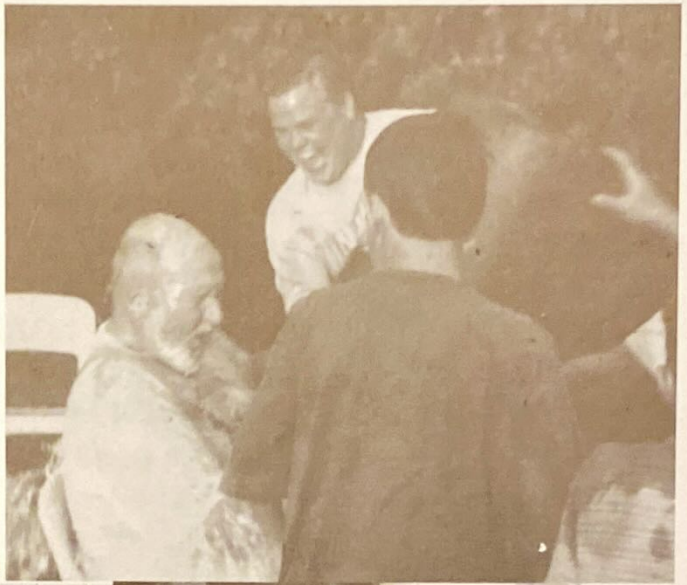
Stephen Brice
 Lee & Margaret Christiansen
 Frances Hettinger
 Randy & Marilyn Davis
 Jack & Barbara Levitsky
 Thomas & Phyllis Chambers
 James & Diane Schlitt
 Thomas & Joyce Gotard
 Bryan McLoughlin

3 Rendezvous

Counterpoint	1204
Estelle	87
Red Dog	400
Redwing	137
Sea Dream	423

Joel & Dorothy Becker
 Andrew & Frances Peters
 Lisa Cavaliere
 Jack Morgan
 William & Barbara Dunleavy





1997 PERPETUAL RACE TROPHIES

Commodore's Cup	<i>Dragon Fly</i>	5861	- John Davis
Foulke Trophy	<i>Amethyst</i>	421	- Douglas Davies
Smith Trophy	<i>Amethyst</i>	421	- Douglas Davies
Cruising Club Crock	<i>Lighthorse</i>	103	- Brendan Brownyard
Cary Pearsall Trophy	<i>Dragon Fly</i>	5861	- John Davis
Deale Trophy	<i>Silver Bullet</i>	42370	- Bruce Kennedy/ James Reichel
Governors Cup	<i>Dragon Fly</i>	5861	- John Davis
Ken Kondor Trophy	<i>Silver Bullet</i>	42370	- James Reichel

1997 RACE TROPHIES

Bay Shore Twilight Spring Series

Cherry Pi	14423
Amethyst	421

Babylon Twilight Spring Series

Silver Bullet	42370
Amethyst	421
Clipper	136

Sprint Series

No-Spin	
Quetzal	704
Spin	
Red Dog	400

Creepstakes

27 ft. and over	
Silver Bullet	42370
Amethyst	421
Clipper	136
Less than 27 ft.	
Red Dog	400
Mirage	536
True Love ?	1518

Founders Cup

No-Spin	
Cherry Pi	14423
Dragon Fly	5861
Spin	
Amethyst	421
Silver Bullet	42370

Bay Shore Twilight Summer Series

No-Spin	
Cherry Pi	14423
Amethyst	421
Catharsis	999
Spin	
True Love ?	1518

Babylon Twilight Summer Series

No-Spin	
Ericsean	4830
Dragon Fly	5861
Bionator	395
Spin	
Mirage	536
Amethyst	421

SBCC Invitational

Drumshanbo	10987
Aerie	185

SBCC Double-Handed Spring Race

No-Spin	
Cherry Pi	14423
Blaze	725
Catharsis	999
Spin	
Silver Bullet	42370
Mirage	536
Amethyst	421

Watch Hill Spring Family Race

Quest	24191
Silver Bullet	42370
Busman's Holiday	732

SBCC Ocean Race

Cruising	
Carefree	1855
No-Spin	
Quest	24191
Dragon Fly	5861
Spin	
Clipper	136
Amethyst	421

Bay Shore Twilight Mid-Summer Series

Amethyst	421
Cherry Pi	14423
Drumshanbo	10987

Babylon Twilight Mid-Summer Series

No-Spin	
Dragon Fly	5861
Ericsean	4830
Bionator	395
Spin	
Mirage	536
Amethyst	421
Clipper	136

Commodore's Cup

No-Spin	
Dragon Fly	5861
Amethyst	421

Pursuit Race

Amethyst	421
Clipper	136
Blaze	725

Bay Shore Twilight Late-Summer Series

No-Spin	
Cherry Pi	14423
Drumshanbo	10987
Spin	
Amethyst	421
Jam V	42281

Babylon Twilight Late-Summer Series

No-Spin	
Dragon Fly	5861
Silver Bullet	42370
Bionator	395
Jam V	42281
Spin	
Amethyst	421
Clipper	136
Mirage	536

Foulke Trophy

No-Spin	
Dragon Fly	5861
Silver Bullet	42370
Spin	
Amethyst	421

Smith Trophy

No-Spin	
Cherry Pi	14423
Spin	
Amethyst	421
Silver Bullet	42370

Great River Race Series

No-Spin	
Dragon Fly	5861
Carefree	1855
Blaze	725
Spin	
Silver Bullet	42370
Clipper	136
Amethyst	421

Great River Cup

Dragon Fly	5861
Cherry Pi	14423

West Island Race

No-Spin	
Atsa Nysa Too	917
Dragon Fly	5861
Quest	24191
Spin	
Silver Bullet	42370
Amethyst	421
Clipper	136

SBCC Double-Handed Summer Race

No-Spin	
Ericsean	4830
Blaze	725
Spin	
Amethyst	421

SBCC Double-Handed Series

No-Spin	
Cherry Pi	14423
Blaze	725
Aerie	185
Spin	
Amethyst	421
Silver Bullet	42370
Clipper	136

Bay Shore Twilight Fall Series

Cherry Pi	14423
Jam V	42281
Annie B	407

Babylon Twilight Fall Series

No-Spin	
Dragon Fly	5861
Kickin' Back	1227
Brokher	759
Spin	
Mirage	536
Gator	639
Ericsean	4830

Whalers Race

Cherry Pi	14423
Clipper	136

Distance Race

Blaze	725
Cherry Pi	14423

Bay Shore Twilight Wrap-Up Series

Cherry Pi	14423
Catharsis	999

Babylon Twilight Wrap-Up Series

Clipper	136
Ericsean	4830
Mirage	536
Red Dog	400

Discoverer's Race

Clipper	136
Dragon Fly	5861

Watch Hill Fall Family Race

Jam V	42281
Catharsis	999
Quest	24191

Last Chance

Clipper	136
Dragon Fly	5861
Cherry Pi	14423

Turkey Race

No-Spin	
Dragon Fly	5861
Annie B	407
Jam V	42281

Spin

Clipper	136
Mirage	536
Red Dog	400

Bay Shore Twilight Championship

No-Spin	
Cherry Pi	14423
Annie B	407
Drumshanbo	10987

Babylon Twilight Championship

No-Spin	
Dragon Fly	5861
Ericsean	4830
Bionator	395

Spin

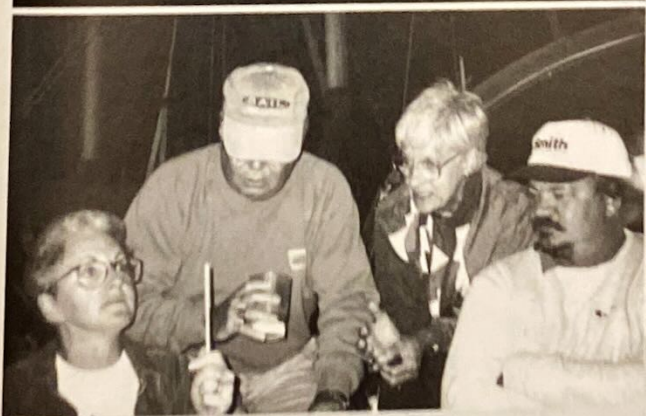
Mirage	536
Amethyst	421
Clipper	136

SBCC Class Championship

No-Spin	
Dragon Fly	5861
Quetzal	704
Cherry Pi	14423

Spin

Amethyst	421
Clipper	136



SBCC AWARDS HISTORY

1951 - 1997

BLUE WATER AWARDS

1952	Jack Young (Doc Hamlin special award)
1953	R.W. Bennett
1964	Art Flynn
1965	Stuart Baldwin (Ed Macy special award)
1966	Ed Macy
1967	Ed Forsyth
1968	Jack Young (Don Streit & Ed Ricketts special awards)
1969	Chet Phipps
1992	Eric Forsyth
1997	Eric Forsyth

GREEN WATER AWARDS

1985	Frank & Joyce Holwell
1985	Bill & Barbara Dunleavy
1987	Harry Wilburger
1988	Frank & Joyce Holwell
1989	Roger Goodwin
1992	Mitch & Shirley Silbert
1996	Jack & Barbara Nielsen

SHEILA DAYTZ TROPHY

1993	Fenian	E.Simmons
	& Saltheart	J.McCormack
1994	Lady Barbara	J.Nielsen
1995	Saltheart	J.McCormack
1996	Cee-J	J.Rambold & C. Conger
1997	Cee-J2	J.Rambold & C. Conger

KEN KONDOR TROPHY

1995	Jam V	J.Dudek
1996	Jam V	J.Dudek
1997	Silver Bullet	J. Reichel

BROADSIDE TROPHY

Ladies' Day Race (First All Female Crew)

1966	Sea Rover	Nan Hanaway
1967	Lady Lou V	Grace Beinert
1968	Lady Lou V	Grace Beinert
1969	Tranquilizer	Sheila Daytz
1970	Banshee	Pat Kelly
1971	Banshee	Pat Kelly
1972	Banshee	Pat Kelly
1973	Too Much	Jane Muchmore
1974	Banshee	Pat Kelly
1975	Banshee	Pat Kelly
1976	Liebchen	Jane Muchmore
1977	Summerwind	Charlotte Wissmann
1978	Firefly II	Ginny Smith
1979	Summerwind	Charlotte Wissmann
1980	Mandalay	Kathy Saxe
1981	Banshee	Pat Kelly

PATRICIA A. KELLY TROPHY

Ladies' Day Race (First All Female Crew)

1982	Mandalay	Kathy Saxe
1983	Curlew	Cindy MacDonell
1984	Lucky Bark III	Susan O'Connell
1985	Cherie	Olive Healy
1986	Blue Thunder	Cary Pearsall
1987	Orion	Felicity Ryan
1988	Lucky Bark III	Susan O'Connell
1989	Catharsis	Margaret Christiansen
1990	Silver Bullet	Melissa Kennedy
1991	What Me Worry?	Felicity Ryan
1992	Absolut	Edie Penny
1993	Dragon Fly	Katherine Davis
1994	Silver Bullet	Lisa Cavalieri
1995	Not raced	
1996	Silver Bullet	Lisa Cavalieri

COMMODORE'S CUP

1967	Ark	G.Walsh
1968	Nalani Kai	J.French
1969	Barcarolle	M.Goldsmith

1970	Orient Star	W.Casazza
1971	Merry Ann	W.Cook
1972	Willopeg	W.Ciocys
1973	Chanson	G.Baldwin
1974	Sandpiper	R.Nehring
1975	Jacqueline II	R.Forman
1976	Jacqueline II	R.Forman
1977	Ghost	R.Logan
1978	Blaze	R.LaBella
1979	Blaze	R.LaBella
1980	Aeolus	R.Graham
1981	Sunriser	H.Smith
1982	Cygnat	B.Finta
1983	Aeolus	R.Graham
1984	No finishers	
1985	Firewater II	Baldwin/Crocker
1986	Firewater II	Baldwin/Crocker
1987	Blue Thunder	C.Brice
1988	Merry Ann	W.Cook
1989	White Squall	M.Smith
1990	Silver Bullet	Kennedy/Reichel
1991	Amethyst	D.Davies
1992	Ricochet	C.Swenson
1993	Sunriser	H.Smith
1994	What Me Worry?	J.Ryan
1995	Mirage	G.Schneller
1996	Amethyst	D.Davies
1997	Dragon Fly	J. Davis

CRUISING CLUB CROCK

Character Boat Beauty Contest & Race

1968	Patience	P.DeSaix
1969	Scrimshaw	H.Kahn
1970	Manx	R.Dunlop
1971	Scrimshaw	H.Kahn
1972	Americat	G.Benedict
1973	Americat	G.Benedict
1974	Schrimshaw	H.Kahn

Best Corrected Time In Around Long Island Race

1979	Flighty Miss	H.Colleran
1980	Merry Ann	W.Cook
1981	Merry Ann	W.Cook
1982	Merry Ann	W.Cook
1983	Force 10	R.Wissmann
1984	Jacqueline II	R.Forman
1985	Alchemist	B.Brownyard
1986	Jacqueline II	R.Forman

1987	Diane	R.Schwartz
1988	Wild Rover	J.Ferguson
1989	Jacqueline II	R.Forman
1990	Barleycorn	B.Brownyard
1991	Barleycorn	B.Brownyard
1992	Ravin'	G.Bottino
1993	Ravin'	G.Bottino
1994	Barleycorn	B.Brownyard
1995	Quest	R.Van Tassel
1996	Diane	R. Schwartz
1997	Lighthorse	B. Brownyard

DEALE TROPHY

1963	Melidi	C.Collis
1964	Decatur	R.Schafer
1965	Gemini	J.Ruppe
1966	Broadbill	W.Simonson
1967	Windsong	A.Bertepelle
1968	Gin	R.Seidenspinner
1969	East of Schoodic	D.Keough
1970	Staryker	D.McPherson
1971	Whisper	D.Brown
1972	Leprechaun	H.Post
1973	Deliana	W.Symons
1974	Sandpiper	R.Nehring
1975	Falcon	A.Heckel
1976	Lena	D.Stephani
1977	Ghost	R.Logan
1978	Jacqueline II	R.Forman
1979	Sunshine	V.Kind
1980	Ailanthus	W.Grauer
1981	Ailanthus	W.Grauer
1982	Jacqueline II	R.Forman
1983	Merry Ann	W.Cook
1984	Ailanthus	W.Grauer
1985	Sunriser	H.Smith
1986	Tachyon	D.Cameron
1987	True Love?	L.Becker
1988	Spirit	W.Titus
1989	Cherry Pi	F.Marinaccio
1990	Ailanthus	W.Grauer
1991	Like, Wow!	W.Brooks
1992	Mirage	G.Schneller
1993	Windshadow	L.Costelloe
1994	Ailanthus	W.Grauer
1995	Windshadow	L.Costelloe
1996	Amethyst	D.Davies
1997	Silver Bullet	B. Kennedy & J. Reichel

FOULKE TROPHY

1954	Loreli	B.Lawrence
1955	Spindrift	R.Tarr
1956	Tranquil	E.Dannemiller
1957	Tranquil	E.Dannemiller
1958	Spindrift	R.Tarr
1959	Harpoon	R.Wissmann
1960	No finishers	
1961	Brandy	R.Paterson
1962	Wanderlust	R.Holzmacher
1963	Jeanne	T.Hangarter
1964	Falcon	A.Heckel
1965	Nirvana	J.Saxe
1966	Fibre Tigre	W.Stone
1967	Godspeed	E.Neale Jr.
1968	Reverie	E.Macy
1969	Merry Ann	W.Cook
1970	Banshee	P.Kelly
1971	Merry Ann	W.Cook
1972	Bold Venture	R.Horn
1973	Starward	J.Moore
1974	Unicorn	L.Casey
1975	Lena	D.Stephani
1976	Strawberry Fields	E.Sabbeth
1977	Dawn Too	D.Jetzorreck
1978	Ailanthus	W.Grauer
1979	Warlock	S.DeLise
1980	Warlock	S.DeLise
1981	Warlock	S.DeLise
1982	Cygnets	R.Finta
1983	Curlew	D.MacDonell III
1984	Dragon Fly	J.Davis
1985	Blaze	R.LaBella
1986	Firewater II	Baldwin/Crocker
1987	Amethyst	D.Davies
1988	Jacqueline II	R.Forman
1989	Firewater II	Baldwin/Crocker
1990	What Me Worry?	J.Ryan
1991	Jacqueline II	R.Forman
1992	Quest	R.Van Tassel
1993	Mirage	G.Schneller
1994	Silver Bullet	J.Reichel
1995	Mirage	G.Schneller
1996	Windshadow	L.Costelloe
1997	Amethyst	D. Davies

GOVERNOR'S CUP

1966	Lively Lady	B.Max
1967	Godspeed	E.Neale, Jr.
1968	Godspeed	E.Neale, Jr.
1969	Merry Ann	W.Cook

1970	Orient Star	W.Casazza
1971	Merry Ann	W.Cook
1972	Bold Venture	R.Horn
1973	Kandy Bar	W.Dwyer
1974	Ghost	R.Logan
1975	Chanson	G.Baldwin
1976	Loon	L.Orr
1977	Ghost	R.Logan
1978	Not awarded	
1979	Sunshine	V.Kind
1980	Aeolus	R.Graham
1981	Heather	D.Davies
1982	Cygnets	R.Finta
1983	Aeolus	R.Graham
1984	Ailanthus	W.Grauer
1985	Cherry Pi	F.Marinaccio
1986	Blaze	R.LaBella
1987	Rhapsody	B.Nierenberg
1988	Orion	J.Ryan
1989	Cherry Pi	F.Marinaccio
1990	Firewater II	Baldwin/Crocker
1991	Firewater II	Baldwin/Crocker
1992	Windshadow	L.Costelloe
1993	What Me Worry?	J.Ryan
1994	What Me Worry?	J.Ryan
1995	Mirage	G.Schneller
1996	Amethyst	D.Davies
1997	Dragon Fly	J. Davis

SCHNUR TROPHY

1951	Judy	W.Hansen
1952	Cirrus	H.Chapman
1953	Joyce	D.Henderson
1954	Triton	P.Hildreth
1955	Chiquita	W.Cain
1956	Moonshine	R.Hayward
1957	Chappy	H.Chapman
1958	Sea Rover	R.Logan
1959	Spindrift	R.Ramsdell
1960	Not awarded	
1961	Escape	W.Palmer
1962	Sea Rover	R.Logan
1963	Errant	E.Seidenberg
1964	Snookie	R.Kent
1965	Bay Bee	J.Wragge
1966	Halcyon	R.Davis
1967	Chico	W.Braddon
1968	Adelaide	P.Wainwright
1969	Nirvana	J. Saxe
1970	Sea Rover	T.Hanaway
1971	Jolly Jack	J.Hollis
1972	Hollandia	J.Pless

1973	Warlock	S.DeLise
1974	Valkyrie	L.Cyr
1975	Freewind	R.Novak
1976	Valkyrie	L.Cyr
1977	Argos	R.Snyder
1978	Glass Menagerie	B.Kennedy
1979	Strawberry Fields	E.Sabbeth
1980	Thunder Cloud	A.Stanton
1981	Windswept	M.Marsa
1982	Betty	W.Menger
1983	Ladybug	R.Rosenbusch
1992	Slim	Hamstra/Rendich
1993	Last Fling	T.Hangarter

SMITH TROPHY

1953	Cutty Sark	D.Norton
1954	Reverie	J.Young
1955	Lorelei	B.Lawrence
1956	Lorelei	B.Lawrence
1957	Spindrift	R.Tarr
1958	Hispaniola	E.Poor
1959	Three Sisters	F.Pallas
1960	Morning Star	H.G.Smith
1961	Falcon	A.Heckel
1962	Pegasus	J.Bruckner
1963	Jeanne	T.Hangarter
1964	Syren	J.Worden
1965	Falcon	A.Heckel
1966	Fibre Tigre	W.Stone
1967	Broadbill	W.Simonson
1968	Ghost	R.Logan
1969	Panacea	S.Herman
1970	Orient Star	W.Casazza
1971	Falcon	A.Heckel
1972	Merry Ann	W.Cook
1973	Loon	L.Orr
1974	Sandpiper	R.Nehring
1975	No finishers	
1976	Merry Ann	W.Cook
1977	Slim	H.Hamstra
1978	Merry Ann	W.Cook
1979	Magic	R.Sheppard
1980	Heather	D.Davies
1981	Honyak	J.Layton
1982	Kiko	G.Baldwin III
1983	Curlew	D.MacDonell III
1984	Jeanne	L.Deutsch
1985	Curlew	D.MacDonell III
1986	Mirage	G.Schneller
1987	Amethyst	D.Davies
1988	Firewater II	Baldwin/Crocker

1989	White Squall	M.Smith
1990	Firewater II	Baldwin/Crocker
1991	What Me Worry?	J.Ryan
1992	Mirage	G.Schneller
1993	What Me Worry?	J.Ryan
1994	What Me Worry?	J.Ryan
1995	Dragon Fly	J.Davis
1996	Slim	P. Rendich
1997	Amethyst	D. Davies

SYMPATICO CUP

1963	Kiddie Ketch	W.Aubin
1964	Spindrift	R.Ramsdell
1965	Extra Dry	J.Davies
1966	Pilgrim	J.Berdolt
1967	Spindrift	R.Ramsdell
1968	Pride	F.Lyons
1969	Pilgrim	J.Berdolt
1970	Valkyrie	L.Cyr
1971	Jolly Jack	J.Hollis
1972	Jolly Jack	J.Hollis
1973	B & B	R.Hollis
1974	Merri Mac	B.MacGill
1975	Unicorn	L.Casey
1976	Banshee	P.Kelly
1977	Ailanthus	W.Grauer
1978	Judi	R.Van Tassel
1979	C-Bob	R.Coleman
1980	Wild Rover	B.Brownyard
1981	Dauntless	W.Lapp
1982	Sweet It Is	B.Nierenberg
1983	Thunder Cloud	J.Classen

CARY PEARSALL TROPHY

1993	Cherry Pi	F.Marinaccio
1994	Mirage	G.Schneller
1995	Mirage	G.Schneller
1996	Ailanthus	W.Grauer
1997	Dragon Fly	J. Davis

MEMBERS - South Bay Cruising Club

Name and Address	Year	Phone	Sail#
Arnold, Theodore, P.O. Box 1418, Sarasota, FL 34230	92		
Baumann, Dr. Angela Lauria, 311 Admiral's Dr. E., West Bay Shore 11706	95	665-6722	280 175
Becker, Charles & Barbara, 12 West Lane, Bay Shore 11706	79	666-0194	354
Becker, Joel & Dorothy, 139 Woodbury Rd., Hauppauge 11788	77	234-4062	1204
Becker, Lawrence & Theresa, 32 Hemlock Lane, Bay Shore 11706-7811	87	666-3537	1518
Beinert, Helen, 15 Rogers Court, West Babylon 11704	51h	587-5626	
Bottino, Dr. Gino & Jane, 167 Fairview Ave., Stamford, CT 06902	86	203 357-8964	50043
Brice, Stephen, 144 Ocean Ave., Amityville 11701	75	264-2267	732
Brooks, Ward, 131 West Islip Rd., West Islip 11795	90	587-4333	22643
Brous, Dale & Marilyn, 770 Shore Walk, Lindenhurst 11757	86	226-2788	260
Brownyard, Brendan, 88 Gillette Ave., Bayport 11705	76	472-9019	103
Brownyard, Brendan, 88 Gillette Ave., Bayport 11705	76	472-9019	power
Captain, Peter & Sandralee, 89 Harriet Rd., N. Babylon 11703	94	661-1783	5583
Caporale, David & Jeanne, 10 Waterside Plaza # 23B, NY NY 10010	96	212 725-7587	704
Carl, William & Ann, RT 735-POB-767, Kilmarnock, VA 22482	51c	804 435-1775	power
Cavalieri, Lisa, 2794 Pine Ave., Ronkonkoma 11779	96	981-7367	power
Chambers, Thomas & Phyllis, 3416 Pkwy. Dr., Baldwin 11510	91	223-7317	302
Chambers, Thomas & Phyllis, 3416 Pkwy. Dr., Baldwin 11510	91	223-7317	power
Christiansen, Lee & Margaret, 6 Birchwood Dr., Great River 11739-0006	81	277-6311	999
Coleman, Robert & Regina, 970 Douglas Ave., Wantagh 11793	78	221-6893	1133
Connor, Dennis & Barbara, 1704 Asharoken Blvd., Bay Shore 11706	83	665-7266	112
Cook, William & Mary Ann, 41 Degnon Blvd., Bay Shore 11706	63	581-5657	220
Cornman, Frederick & Joan, 12 Larkspur Dr., W. Islip 11795	83	669-6628	39
Costelloe, Lee & Noreen, 10 Hunting Hill Dr., Blue Point 11715	91	363-8255	20774
Cresci, Robert & Jane, 115 The Helm, East Islip 11730	85	277-2570	3301
Crimmins, Edmund & Glen, 62 Malone Ave., Long Beach 11561	96	889-9357	901
Czach, Richard, 9 Cord Avenue, West Babylon 11704	88	669-7462	675
Davies, Anton & Evelyn, 5006 Plymouth Ct., New Bern, NC 28560	72c	919 633-0848	2712
Davies, Douglas & Barbara, 88 Bacon Lane, Bay Shore 11706	80	665-0174	421
Davis, John & Kathryn, 503 Avon Place, West Islip 11795	83	587-9326	5861
Davis, Randy & Marilyn, 2759 Wallace Ave., N. Bellmore 11710	91	826-6983	150
Daytz, Richard, 123 Milligan Road, West Babylon 11704	65	669-6993	10207
Delamer, Brian & Kristen, 7150 Ashview Ln., Hamilton, OH 45011-8721	96	277-3255	90965
Drossos, Ted & Terri, 47 Division Ave., East Islip 11730	90	277-2038	509
Dudek, Joseph & Annmarie, 45 Bucket Lane, Levittown 11756	92	731-0530	42281
Dunleavy, William & Barbara, 243 Bay View Dr., Oakdale 11769	72	567-0594	423
Dunlop, Robert & Peggy, P.O. Box 486, Belle Haven, VA 23306	62	757 442-3316	176
Dwyer-Cunniff, Barbie, 930 Pelican Dr., New Bern, NC 28560	66h	919 636-5281	
Eggerstedt, Fred & Lucy, 6060 Shr. Blvd, S, Apt. 812, Gulfport, FL 33707	53c	813 381-0552	
Eilbeck, William & Sally, P.O. Box 144, Babylon 11702	88	661-1507	144
Eppig, Aileen, 153 Eaton Lane, West Islip 11795-4545	85	422-6032	759
Eppig, Aileen, 153 Eaton Lane, West Islip 11795-4545	85	422-6032	power
Farrell, Martin & Catherine, 31 Magnolia Street, Central Islip 11722	95	234-1309	2217
Feldman, Arthur & Marilyn, 960 Gardner Dr., Bay Shore 11706	70	666-5494	705
Ferguson, Jim & Donna, 39 Avon Place, Amityville 11701	81	691-4055	57

MEMBERS - South Bay Cruising Club

Name and Address	Year	Phone	Sail#
Fili, Dr. Saverio & Jeanne, 270 Edgewater Ave., Bayport 11705	89	472-2622	1321
Finkle, Richard & Claudine, 447 Everdell Ave., West Islip 11795	95	661-1773	1000
Flett, Brian & Judi, 1710 Asharoken Blvd., Bay Shore 11706	88	666-1915	68
Forde, Mickey & Barbara, 128 S. Clinton Ave., Bay Shore 11706	98	665-3491	1770
Forman, Robert & Jacqueline, 183 W. Islip Rd., W. Islip 11795	69	587-3904	52066
Forsyth, Eric, 2 Bond Lane., Brookhaven 11719	62	286-9721	48
Franwick, Richard & Holly, 20 Lawrence Ln, Bay Shore 11706	97	665-2126	22023
Freedman, Robert & Estelle, 419 Marine Ln., W. Babylon 11704	91	422-0402	30661
Fritz, William & Margeret, 15 Ridgewood Drive, Shirley 11967	84	281-6365	4382
Gardner, Donald & Elizabeth, 14 N. Brewster Ln., Bellport 11713	68	286-1396	10196
Gargiulo, Michael & Gloria, 228 Sylvan Rd., N. Babylon 11703	88	669-2321	524
Glasser, Robert & Ann, 7 Shearwater Way, Centereach 11720-4313	97	981-9649	5460
Goodman, Dr. Michael & Gail, 158 Sequams Ln West, W. Islip 11795	79	587-2550	395
Goodwin, Harold & Jean, 2819 Eastern Blvd., Baldwin 11510	68	223-3646	151
Gotard, Thomas & Joyce, 372 Hickory St., Massapequa 11758	77	541-2805	1260
Graham, Dick, 11 Haide Place, East Islip 11730	69	581-5412	297
Grauer, William & Vivian, 52 Andrew Ave., Islip Terrace 11752	76	277-6212	1121
Greenblatt, George & Ginger, 19 Maryland St., Dix Hills 11746	94	667-0819	3221
Grover, James & Mary, 185 Woodsome Road, Babylon 11702	58	669-6891	185
Hallam, Joseph & Marilyn, 4039 W. Gilgo Beach, Babylon 11702-4615	88	785-4496	166
Halpin, Patrick & Debra, 55 The Crescent, Babylon 11702	90	587-7875	874
Hamstra, Howard & Elizabeth, 1137 Riverside Dr., Salisbury, MD 21801	64	410 219-3348	
Hangarter, Dr. Theodore & Judy, 300 Willets Ln., W. Islip 11795	60	661-0475	102
Hanrahan, Mike & Linda, 349 Windsor Ave., Brightwaters 11718	94	666-9449	1712
Healey, Chuck & Nancy, 81 Corey Ave., Blue Point 11715	97	363-8960	145
Heckel, Alfred & Stasia, 207 Captains Way, Bay Shore 11706	56	666-6699	242
Henry, Thomas & Barbara, 175 S.E.St.Lucie Blvd.Apt.I-216, Stuart, FL 34996	73	561 287-5603	
Herschenhous, Jeffrey & Susan, 125 Margaret Blvd., Merrick 11566	96	378-8430	5
Hettinger, Frances, 95 Warner Road, Huntington 11743	79	368-7455	6401
Holwell, Frank & Joyce, PO Box 61, Johnsburg, NY 12843-0061	55	518 623-3057	23
Horn, Bobby, 461 Greene Ave., Sayville 11782	69	589-2759	335
Hyer, David & Joann, 305 Willets Lane, West Islip 11795	92	669-4819	12
Johnson, Gary & Terry, 29 Orowoc Dr., Islip 11751	98	859-0118	221
Jones, Tony & Paulette, 51 Munson Lane, West Sayville 11796	88	589-7248	30461
Kachel, Walter, 6 Bunny Lane, Amityville 11701	75	598-3592	4495
Kennedy, Bruce & Melissa, 7 Bayside Ave., Amityville 11701	75	598-0751	320
Kennedy, Bruce & Melissa, 7 Bayside Ave., Amityville 11701	75	598-0751	400
Kennedy, Bruce & Melissa, 7 Bayside Ave., Amityville 11701	75	598-0751	42370
Kind, Volker & Andrea, 504 Bay 5th Street, West Islip 11795	72	661-4070	822
Kissenberth, Erwin & Gertrude, 117 Tropic place, Rockledge, FL 32955	80	407 635-8572	012
Kleisler, Wilfred & Kathleen, 22 Cockonoe Ave., Babylon 11702	65	587-2899	96
Kohl, Leo & Irene, 4721 S. Landings Dr, Fort Myers, FL 33919	90	813 481-1492	4430
Kohl, Michael & Robin, 75 Suffolk Road, Massapequa 11758	84	795-7725	2484
Kohl, Michael & Robin, 75 Suffolk Road, Massapequa 11758	84	795-7725	power
Kohler, Richard, PO Box 2626, Setauket 11733	90	246-5470	34
Kondor, Lynn, 102 Jackson Ave., Rockville Centre 11570	63h	764-3213	
Krug, Dennis & Adriana, 25 Harkin Lane, Hicksville 11801	80	433-3452	283
LaBella, Richard & Diane, 282 Timberpoint Rd., E. Islip 11730	74	277-4826	725

MEMBERS - South Bay Cruising Club

Name and Address	Year	Phone	Sail#
Larmor, Dever & Andrea, 79 Nassau Ave., Islip 11751-3607	61	277-4933	305
LaTorre, Richard & Ginny, 11 Cutter Place, West Babylon 11704	81	321-7311	1855
Layton, Jack & Kathi, 156 Cross Road, Oakdale 11769	73	589-9206	625
Leddy, James & Maureen, 16 Nancy Drive, Sayville 11782	86	589-9454	2641
Levine, Mickey, 152 W. 9th St., Deer Park 11729	97	586-0578	5627
Levitsky, Jack & Barbara, 20 King Road, Kings Park 11754	93	724-5855	105
Lightstone, Peter & Elizabeth, 24 Braham Ave., Amityville 11701	86	598-1833	92
Lightstone, Peter & Elizabeth, 24 Braham Ave., Amityville 11701	86	598-1833	power
Ljungqvist, Peter & Kathy, 306A S. Country Rd., Brookhaven 11719	86	286-4840	67
Lowy, Larry & Diane, 9 Rutgers Road, Farmingville 11738	83	732-6641	110
Lyons, John & Alice, 51 Johnson Ave., Bay Shore 11706	98	968-0342	5151
MacGill, Bruce & Ethel, 39 Stuart Ave., Amityville 11701	65	598-1050	11
Malinka, Robert & Linda, 60 East Lake Dr., Amityville 11701	90	598-3561	1442
Malloy, Robert & Mary Ellen, 412 Pacific St., Massapequa Park 11762	96	541-6731	367
Manion, Ed & Karen, 35 Golf Club Circle, Manorville 11949	97	874-4506	832
Margeson, Charles & Jane, 6 Braham Ave, Amityville 11701	88	691-5569	203
Marinaccio, Frank & Pat, 43 Chapel Hill Drive, Brentwood 11717	84	231-6457	14423
Martorana, Bob & Ronnie, 19 Duck Lane, West Islip 11795	81	422-3404	621
Mattera, Jeff, 485 North Windsor Ave., Brightwaters 11718	81	968-6127	4201
Maud, Dr. Dennis & Joyce, 19 Smith Street, Blue Point 11715	81	363-2011	power
Max, Dorothy, 11 Clearwater Ave., Massapequa 11758	53	541-4860	
McCormack, Joseph & Dorothy, 41 Glasgow Ave., Deer Park 11729	89	667-7612	4463
McLoughlin, Bryan, 116 Paris Ct., W. Islip 11795	97	661-1546	62
Menger, William & Beryl, 416 Fire Island Ave., Babylon 11702	66	587-4930	9
Messina, Gaspare & Laurie, 263 Lamoka Place, W. Islip 11795	94	321-0919	641
Meyerson, Michael, 8 Oakdale Ave., Oakdale 11769	83	589-4867	40601
Morgan, Jack, 194 West Islip Road, West Islip 11795	97	422-6531	137
Mourino, Richard & Ann, 150 Rollstone Ave., W. Sayville 11796	85	589-2275	6217
Mularadelis, James & Jaclyn, 1018 McCall Ave., Bay Shore 11706	98	666-9699	26
Mulle', Anthony & Antoinette, 42 Thompson Ave., Babylon 11702	79	669-7969	360
Murphy, Richard & Kim, 89 Whalers Cove, Babylon 11702	98	587-1686	381
Murray, Earl Jr. & Trudy, 4953 Bacopa Lane #605, St. Petersburg, FL 33715	70c	813 864-2572	
Murray, William & Connie, 227 Middle Rd., Blue Point 11715-1901	83	363-7511	
Nehring, Richard & Jinie, 5108 Bucco Reef Rd, New Bern, NC 28560	64c	919 633-0619	power
Nielsen, Jack & Barbara, 136 Mariners Way, Copiague 11726	86	842-9169	1395
Novak, Lawrence & Irene, 246 Marilyn Street, East Islip 11730	86	277-9201	46
O'Connell, Martin & Marceil, 97 Paumanake Ave, Babylon 11702	88	422-2216	1227
O'Connell, Thomas & Susan, 2812 Abbey Lane, Richmond, VA 23233	79	804 360-9516	6744
Olsen, Robert & Carole, RR2 Box 233, Jefferson, NY 12093	79	607 652-2130	669
Orlando, Fred, 224 Litchfield Ave., Babylon 11702	97	661-1107	224
Ossandon, Steven & Kathryn, 17 Lewis Circle, Babylon 11702	94	422-2380	9194
Padden, Kevin & Loretta, 33 Litchfield Avenue, Babylon 11702	89	661-7958	4830
Pallotta, Dr. John & Sigrid, 28 Garner Lane, Bay Shore 11706	77	665-8892	33978
Parker, Charles & Linda, 105 Cleveland St., Bay Shore 11706	77	968-8632	345
Parker, Rev. Richard & Grace, 6 Bayview Ave., Babylon 11702	68	321-5564	77

MEMBERS - South Bay Cruising Club

Name and Address	Year	Phone	Sail#
Pearson, Alex & Ann, 6 Flower Hill Lane, Bay Shore 11706	59c	665-0908	power
Penn, Thomas & Linda, 25 Willow Ave, Islip 11751	83	277-5980	225
Penny, Stephen & Edie, 10 Secatogue Lane E., W. Islip 11795	85	661-5952	7700
Peter, Francis & Barbara, 24 Center St., Sayville 11782-2733	91	589-3466	130
Peters, Dr. Andrew & Frances, 45 Wright Road, Rockville Centre 11570	79	766-6766	87
Petroske, Edward & Joan, 36 Lakeview Drive, Manorville 11949	74c	878-6126	power
Pettit, Roger & Margaret, 281 Ocean Ave., Lynbrook 11563	85	599-8390	629
Pittman, Barry & Michelle, 419 Potter Blvd., Brightwaters 11718	83c	666-3032	10987
Post, Marguerite, 44 Davison Lane East, West Islip 11795	51c	669-5655	
Rambold, John & Corinne, 128 Rider Ave., Patchogue 11772	95	758-5430	124
Ramsdell, Roger & Isabelle, 28 Walnut Ave., Rockville Centre 11570	57c	766-2294	
Randazzo, Mark & Dorothy, 247 Belvedere Dr., Oakdale 11769	97	567-2064	605
Rearon, Eugene, 31 West Lane, Bay Shore 11706	63	968-5082	42894
Reichel, James, 8 E.Garfield St. Apt.1B, Bay Shore 11706	89	665-2327	400
Reichel, James, 8 E.Garfield St. Apt.1B, Bay Shore 11706	89	665-2327	42370
Rendich, Paul, Apt. 19M 185 West End Ave., NY NY 10023	90	516 669-1403	136
Rettaliata, Peter & Mary, 46 Iroquois Drive, Brightwaters 11718	87	666-9087	914
Rettaliata, Jeffrey & Barbara, 82 Shore Lane, Bay Shore 11706	84	666-9241	88
Rettaliata, Jeffrey & Barbara, 82 Shore Lane, Bay Shore 11706	84	666-9241	power
Revella, Parker & Deborah, 6 Long Leaf Lane, Medford 11763	84	654-1297	37
Rising, Niel I., PO Box 616, Brightwaters 11718-0616	69	665-6712	power
Roan, Frank & Pauline, 21 Cutter Pl., W. Babylon 11704	96	893-5649	33
Rosenberg, Bud & Harriet, 6372 Palma Del Mar Blvd. #804, St. Pete., FL 33715	57c	813 867-2772	
Rothaug, Raymond & Jo, 469 Connetquot Ave., Islip Terrace 11752	89	277-5154	190
Rottkamp, Bill, P.O. Box 1209, White Stone, VA 22578	74	804 435-0491	1699
Rouse, Robert Jr. & Shirley, 14 Carolee Crt, W. Islip 11795-5104	88	422-5939	
Rudek, Daniel & Laurie, Box 607, Moriches 11955	97	399-0770	3367
Sabella, Robert & Joyce, 21 Roosevelt Blvd., Massapequa 11758-6841	97	798-4058	2741
Saccio, Philip & Donna, 870 Church Street, Bohemia 11716	68	567-5678	
Sachnoff, Jerry & Dorothy, 86 Stillwater Ave., Massapequa 11758	83	798-0648	212
Sadowy, Roman & Diane, 65 West 96th St., NY, NY 10025	96	212 662-5468	303
Saganic, Romeo & Rosemary, 191 Wampum Ln., W. Islip 11795	80	587-3564	277
Sagarese, Charles & Concetta, 1 Mast Lane, West Islip 11795	68	587-5939	382
Saxe, John & Kathleen, 16 Elder Road, Islip 11751-4909	61	581-1291	4744
Schaefer, Laurence A. & Doris, 120 Wampum Ln., W. Islip 11795	76	669-0374	308
Schaffer, Christopher & Linda, 401 Venetian Blvd., Lindenhurst 11757	93		432
Schaper, Ron, 941 Lyons Rd, Apt. 5202, Coconut Creek, FL 33063	87	954 917-8273	2016
Scherek, Sam & Madge, 7 Arbor Lane, Merrick 11566	97	379-9892	7
Schlitt, James & Diane, 83 Pittsburgh Ave., Massapequa 11758	85	541-3068	254
Schneller, Greg & Mary, 83 Sequams Ln. W., W. Islip 11795	82	587-6236	536
Schoenwald, Maurice & Susan, 5270 Gulf of Mexico Dr., Longboat Key, FL 34228	93	941 383-4444	116
Schulz, Peter & Gerry, 58 Timber Point Rd., East Islip 11730	88	516 968-4455	
Schwartz, Gary & Sue, 36 Clifton Dr, Patchogue 11772	97	277-1851	715
Schwartz, Theodore & Mary, 108 Argyle Drive, E. Islip 11730	76	289-8915	114
		277-2013	742

MEMBERS - South Bay Cruising Club

Name and Address	Year	Phone	Sail#
Schwartz, Dr. Julian & Marion, 1140 Crystal Dr., Plm Bch Grdns, Fl 33418	73	561 624-3048	1085
Schwartz, Dr. Robert & Benjamin, 160 W. Bayberry Rd., Islip 11751	80	277-0330	40999
Seidenberg, Everett, 2950 S.E.Ocean Blvd.-#59-5, Stuart, FL 34996	55c	561 221-1507	
Sheppard, Robert & Carole, 167 Paulanna Ave., Bayport 11705	72c	472-0099	power
Sherwood, Richard & Dianne, 104 Lighthouse Rd., Babylon NY 11702	73	669-3568	443
Sicinski, Joseph & Anita, 38 Woodhollow Rd., Grt. River 11739	82	277-4104	power
Siegler, Skot & Cary, 161 Sequams La. West, West Islip 11795	95	422-2525	639
Silver, Bruce & Jean, 1815 Brookwood Drive, Akron, OH 44313	95	330 867-1116	27
Simmons, Edwin & Kathleen, 29 Muncie Rd., W. Babylon 11704	89	422-0625	1858
Smith, Hale & Claire, 6 Alden Road, East Rockaway 11518	75	593-4427	346
Smith, Janet, 159 Milligan Rd., W. Babylon 11704	51h	661-2786	
Smith, Michael & Virginia, 3980 Areca Dr., St. James City, FL 33956	77c	813 283-7469	2404
Snyder, Robert, 74 Fire Island Ave., Babylon 11702-3502	71	587-7700	power
Soranno, Dr. Carl & Audrey, 27 Gamecock Lane, Babylon 11702	92	422-8046	917
Sowden, Edward & Carol, 50 Mohawk Drv., N. Babylon 11703	94	667-0186	1144
Spivack, Boris & Lois, 1300 N River Rd #95W, Venice, FL 34293-4701	68	941 497-2852	
Spivack, Douglas & Debra, 83 Madison St., Blue Point 11715	97	363-2199	442
Stahli, Urs & Therese, 56 Wood Ave., Amityville 11701-3326	97	598-2217	485
Stephens, Troy & Charlene, 162, Tenth Ave., Holtsville 11742	96	475-6928	4679
Stuhler, Robert & June, 22 Brightwater Pl., Massapequa 11758	64	799-4457	
Supple, Donald, 518 Arlington Dr., Seaford 11783	96	579-0482	090
Tedesco, Dave & June, 222 Wiley St., Brentwood 11717	98	277-3760	222
Thayer, Whiting & Joyce, 3164 Rolling Rd, Edgewater, MD 21037	56c	410 956-5689	45
Thomas, William & Nancy, 75 Stillwater Ave., Massapequa 11758	55	798-2349	170
Titus, Walter & Louise, 43 Wingam Drive, Islip 11751	81	581-1492	615
Tuffin, James & Grace, 4 Grace Court, Bay Shore 11706	86	665-8190	43
Turner, Eugene, 84 South Carl Ave., Babylon 11702	77	669-5271	270
Tyler, Thomas & Joyce, 23 Biltmore Blvd., Massapequa 11758	83	541-2602	
Van Nostrand, David & Jeanne, 14 Christopher Ct., Babylon 11702	79	669-8862	2808
Van Nostrand, Roy & Peggy, 66 East Lake Drive, Amityville 11701	66	691-6151	120
Van Tassel, Robert & Cynthia, 3 Sumpwams Ave, Babylon 11702	77	422-6382	24191
Van Zanten, Martin & Marilou, 28 Country Greens Drv., Bellport 11713	89	286-9406	578
Vetter, Robert & Joann, 75 Bayview Drive, Oakdale 11769	89	589-8209	1181
Warsaw, Merritt & Maryellen, 645 Hunt Lane, Manhasset 11030	85	627-2963	717
Webb, John & Linda, 332 Aster Rd., West Islip, 11795	98	893-3183	711
Wendelkin, Jeff & Diane, 280 N. Village Ave., Rockville Center 11570	98	536-9394	8634
Wheeler, William & Ann, 19 Lawrence Lane, Bay Shore 11706	90	666-7369	407

MEMBERS - South Bay Cruising Club

Name and Address	Year	Phone	Sail#
Wiehl, Rudi & Rosalie, 521 Bahama Drv., Indian Harbor Beach, FL 32937	76	407 777-9395	413
Wills, Richard & Anna Mae, 24 Smith Street, Babylon 11702-2306	71	669-5382	664
Woodhull, Richard & Virginia, 277 St. Thomas Ave., Key Largo, FL 33037	75	305 453-9382	
Wragge, John, 27 Bayview Lane, Amityville 11701-3924	54	264-0111	35
Yaxis, Alec & Vi, 29 Hamilton Street, Amityville 11701	60	264-2153	125
Young, John & Jenni, 106 West Islip Road, West Islip 11795	51c	669-1181	1090
Zimmer, Donald & Laurette, 3470 Homestead Ave., Wantagh 11793	67c	785-5246	
Zimmerman, Fred & Barbara, 33 Eaton Lane, West Islip 11795	51h	669-4547	



**FLEET - South Bay Cruising Club
Sailing Auxiliaries**

SAIL#	BOAT NAME	LAST NAME	RIG	HCP	LOA	DRAFT	MODEL
5	Colie	J. Herschenhous	Sloop	207	27'	2' 3	
7	Candide	S. Scherek	Sloop		25'	2' 3	
9	Betty	W. Menger	Cat	280	19'	1' 10	Menger
11	Merri Mac	B. MacGill	Yawl		32'	3' 6	Endeavor
012	Golden Days	E. Kissenberth	Sloop		30'	3' 5	Cape Dory 300
12	Filibuster	D. Hyer	Sloop	194	30'	3' 6	Morgan
23	Manana	F. Holwell	Sloop		35'	3' 9	Pearson
26	Discovery	J. Mularadelis	Sloop		26'	3' 6	Seafarer
27	Silver Mist	B. Silver	Sloop		26' 11	3'	O'Day 272
33	Nauti Lady	F. Roan	Ketch		33'	5'	Nauticat
34	A Yacht of Patience	R. Kohler	Sloop		34'	4' 3	Hunter
35	Sea Jay	J. Wragge	Sloop	221	27'	3' 4	Tartan
37	De Ja Vu	P. Revella	Sloop		31'	3' 11	Pearson
38	C'est La Vie	R. Murphy	Sloop		28' 2	3' 6	Mariner
39	Emerald Seas	F. Cornman	Sloop	170	31'	4'	Tanzer
43	Nereid	J. Tuffin	Sloop	260	25'	3' 5	Cape Dory
45	Skylark	W. Thayer	Ketch		40'	3'	Motor Sailer
46	Windstar	L. Novak	Sloop	176	33'	4'	Irwin
48	Fiona	E. Forsyth	Cutter		42'	6'	West sail
57	Stardust	J. Ferguson	Sloop	176	30'	3' 4	Tartan
62	Slim	B. McLoughlin	Sloop	221	27'	3' 4	Tartan
67	Tuono	P. Ljungqvist	Sloop	232	26' 11	2' 11	O'Day
68	Judi Ann	B. Flett	Sloop	200	30'	3' 6	Wanderer
77	Charisma	R. Parker	Sloop		32'	3' 6	Bristol
87	Estelle	A. Peters	Sloop	132	41' 1	4' 6	Bristol
88	Mystique	J. Rettaliata	Sloop	152	35' 5	3' 9	Bristol
090	Kristeki	D. Supple	Sloop	188	28'	3' 9	Hunter
92	Chimera	P. Lightstone	Cat		20'	1' 7	Seaward Fox
96	Kitty K.	W. Kleisler	Sloop		25'	2'	McGreggor
102	Last Fling	T. Hangarter	Sloop	230	28'	2' 2	Kelt
103	Lighthorse	B. Brownyard	Sloop		30'	7'	Melges
105	Lady Barbara	J. Levitsky	Cutter		30'	2' 8	Island Packet
110	Firstlight	L. Lowy	Sloop		30'	4'	Newport
112	Leprechaun	D. Connor	Sloop	198	30'	3' 6	Wanderer
114	Obsession	G. Schwarting	Sloop		24' 7	4' 2	Catalina
116	Susy-Q	M. Schoenwald	Sloop	176	22'	4'	J-22
120	Lorna Doone	R. Van Nostrand	Sloop	192	33'	3'	S&S
124	Cee-J2	J. Rambold	Ketch	162	42'	5'	Whitby
125	Vi	A. Yaxis	Ketch	235	28'	3' 5	H-28
130	Vixen	F. Peter	Ketch		36' 5	4' 6	Pearson 365
136	Clipper	P. Rendich	Sloop	123	27'	5'	J-27
137	Redwing	J. Morgan	Sloop	192	30' 3	4' 6	C & C Redwing
144	Njord	W. Eilbeck	Sloop	136	37'	4' 3	Tartan
145	Bonnie Lassie	C. Healey	Sloop		30'	4	Pearson
150	Fox	R. Davis	Sloop	202	30'	3' 6	Wanderer
151	Good Wind	H. Goodwin	Sloop		31' 1	3' 6	Bristol
166	Papillon	J. Hallam	Sloop	192	30'	4'	Laguna
170	Second Wind	W. Thomas	Sloop	208	28'	2' 11	Soverel
175		A. Baumann	Sloop		18' 6	2' 3	Cape Dory
176	Resistance	R. Dunlop	Sloop	193	30'	3' 6	Wanderer
185	Aerie	J. Grover	Sloop	176	28'	3' 11	Tartan
190	Saga	R. Rothaug	Sloop		32' 2	4' 2	O'Day
203	Shadow	C. Margeson	Sloop		41'	4' 2	Morgan
212	Puffin	J. Sachnoff	Sloop	230	25' 4	2' 9	Irwin 10/4

**FLEET - South Bay Cruising Club
Sailing Auxiliaries**

SAIL#	BOAT NAME	LAST NAME	RIG	HCP	LOA	DRAFT	MODEL
220	Merry Ann	W. Cook	Sloop	175	30'	4'	C&C
221	Loki	G. Johnson	Sloop		27' 11"	4' 6"	C&C
222	Painkiller	D. Tedesco	Sloop		27'	3' 6"	Hunter
224	Tiki	F. Orlando	Sloop		25'	3' 6"	Cape Dory
225	Moondance	T. Penn	Sloop	210	25'	4' 3"	C&C
242	Falcon	A. Heckel	Sloop	150	35' 5"	3' 9"	Bristol
254	Pzaz	J. Schlitt	Sloop		30'	3' 6"	O'Day
260	Pursuant	D. Brous	Sloop	176	35'	3' 9"	Pearson
270	Independence	E. Turner	Sloop	221	27'	3' 4"	Tartan
277	Adria	R. Saganic	Sloop	221	27'	3' 4"	Tartan
280	Phantom	T. Arnold	Sloop		25'	2' 6"	O'Day 25
283	Kariana	D. Krug	Sloop	171	34'	4'	Irwin
297	Aeolus	D. Graham	Sloop	200	30'	3' 6"	Wanderer
302	Tom Boy II	T. Chambers	Cat		19'	1' 8"	Menger
303	Dragonfly	R. Sadowy	Cutter		37'	2' 8"	Prout Catamaran
305	Incredible	D. Larmor	Sloop	220	30'	2' 4"	Bombay Express
308	Cu Mara	L. A. Schaefer	Sloop		33'	4' 5"	Endeavor
320	Glas Menagerie	B. Kennedy	Sloop	196	31'	3' 3"	Corvette
335	Colleen	B. Horn	Sloop		27'	1' 7"	Irwin
345	Char-Lynn	C. Parker	Sloop	149	34' 5"	4' 3"	Hunter
346	Sunriser	H. Smith	Sloop	238	22' 5"	2'	Tanzer
354	Becky	C. Becker	Sloop		30'	3' 6"	O'Day
360	Wild Blue II	A. Mulle'	Ketch	238	30'	4'	Allied Seawind
367	Second Wind	R. Malloy	Sloop		19' 2"	9"	O'Day Mariner
382	Don Quixote	C. Sagarese	Sloop		28'	4'	Newport
395	Bionator	M. Goodman	Sloop	179	29'	3' 3"	C&C
400	Red Dog	B. Kennedy	Sloop	176	22' 6"	4'	J-22
400	Red Dog	J. Reichel	Sloop	176	22' 6"	4'	J-22
407	Annie B	W. Wheeler	Sloop	227	24'	4'	C&C
413	Karma	R. Wiehl	Sloop	176	35'	3' 9"	Pearson
421	Amethyst	D. Davies	Sloop	123	27'	4' 11"	J-27
423	Sea Dream	W. Dunleavy	Sloop		28'	4' 2"	Newport
432	Solitude	C. Schaffer	Sloop	170	30'	5' 5"	Irwin
442	Reality	D. Spivack	Sloop		29'	4' 4"	Ericson
443	Whisper	R. Sherwood	Sloop		29' 9"	3' 6"	Bristol
485	Petite Swiss	U. Staehli	Sloop		22'	1' 8"	O'Day 222
509	Sugar 'N Spice	T. Drossos	Sloop	228	25'	2' 8"	U S Yacht
524	Stardust	M. Gargiulo	Sloop	198	27' 6"	3' 6"	Mirage
536	Mirage	G. Schneller	Sloop	207	26'	4'	Pearson
578	Clepsydra	M. Van Zanten	Sloop		25'	3'	Kelt
605	Williwaw	M. Randazzo	Sloop	171	30'	4'	Ericson
615	Spirit	W. Titus	Sloop	250	26'	3' 10"	Bristol
621	Moonraker	B. Martorana	Sloop	158	35' 5"	3' 9"	Bristol
625	H.S. Kathleen L	J. Layton	Ketch		44'	4' 8"	Brewer
629	Witch Craft	R. Pettit	Sloop		22'	2'	Hunter
639	Gator	S. Siegler	Sloop	176	22'	4'	J-Boats
641	Laurie Jean	G. Messina	Sloop		30'	4' 4"	Catalina
664	Patricia Ann	R. Wills	Cat		18'	1' 10"	Herreshoff
669	Kittiwake	R. Olsen	Cutter		37'	4'	Hunter
675	Shoot'n the Breeze	R. Czach	Sloop	180	35'	4'	Hallberg Rassy
704	Quetzal	D. Caporale	Sloop	210	25'	4' 3"	C&C
705	Zephyr	A. Feldman	Sloop	195	29' 9"	3' 6"	Bristol
711	Daydreamer	J. Webb	Sloop		30'	3' 6"	O'Day
715	Runaway Too	P. Schulz	Sloop	245	24'	2'	Seafarer

**FLEET - South Bay Cruising Club
Sailing Auxiliaries**

SAIL#	BOAT NAME	LAST NAME	RIG	HCP	LOA	DRAFT	MODEL
717	Broadbill	M. Warsaw	Sloop		30'	3' 6	Wanderer
725	Blaze	R. LaBella	Sloop	175	30'	4' 4	C&C
732	Busman's Holiday	S. Brice	Sloop	120	40'	4' 11	O'Day
742	Friendly Persuasion	T. Schwarting	Sloop	185	30'	4'	Newport
759	Brokher	A. Eppig	Sloop	210	25'	4'	C&C
822	Sunshine	V. Kind	Sloop	210	25'	3' 8	C&C
832	Therapy	E. Manion	Sloop		25'	3' 5	Catalina
874	Alone At Last	P. Halpin	Sloop		34'	3' 10	Catalina
901	Hot Tar	E. Crimmins	Sloop		28	4' 4	Albin
914	Kittiwake	P. Rettaliata	Sloop	210	26'	4'	Pearson
917	Atsa Nysa Too	C. Soranno	Sloop	144	37'	4' 6	Benetau
999	Catharsis	L. Christiansen	Sloop	181	30'	4'	Irwin
1000	Magic	R. Finkle	Sloop	207	26	4'	Pearson
1085	Wandelaar	J. Schwartz	Ketch	168	42' 4	5' 3	Pearson
1090	Courtesan	J. Young	Yawl		42' 6	5'	C&C Custom
1121	Ailanthus	W. Grauer	Sloop	207	26'	4'	Pearson
1133	Antares II	R. Coleman	Sloop	179	31'	3' 11	Pearson
1144	Voodoo Lady	E. Sowden	Sloop		27'	4' 5	Hunter
1181	Dragon's Den	R. Vetter	Sloop		34' 4		Island Packet
1204	Counterpoint	J. Becker	Sloop	180	30' 5	4' 4	Pearson
1227	Kickin' Back	M. O'Connell	Sloop	135	34'	4' 6	Tartan
1260	Silhouette	T. Gotard	Sloop	193	33'	3' 5	Swiftsure
1321	Enchanted	S. Fili	Sloop		30'	3' 8	Island Packet
1395	Lady Barbara	J. Nielsen	Ketch	180	37'	4' 6	Endeavor
1442	Ranger	R. Malinka	Sloop		25'	3' 6	Cape Dory
1518	True Love ?	L. Becker	Sloop	258	22'	1' 8	O'Day
1699	Patience	B. Rottkamp	Sloop		22'	1' 8	Catalina
1712	Summer Breeze	M. Hanrahan	Sloop	226	28'	3'	Irwin
1770	Nephele	M. Forde	Sloop		30'	3' 6	Wanderer
1855	Carefree	R. LaTorre	Yawl	190	35'	3' 10	Allied Seabreeze
1858	Fenian	E. Simmons	Sloop		29' 9	3' 6	Bristol
2016	Bagheera	R. Schaper	Sloop	164	40'	4'	Bristol
2217	Pilgrim Wind	M. Farrell	Sloop		22'	1' 5	Helsen
2404	Yellowbird	M. Smith	Sloop	126	40'	4' 9	Crusader
2484	Hydrotherapy	M. Kohl	Sloop	142	39'	4' 8	Pearson
2641	Compass Rose	J. Leddy	Trawler	180	43'	4'	Albin
2712	Carolina	A. Davies	Sloop	200	30'	3' 6	Wanderer
2741	Little Wind	R. Sabella	Sloop		22'	2' 2	O'Day
2808	Gliding Gull	D. Van Nostrand	Sloop	196	31'	3' 3	C&C
3221	Gin Ne Sais Quoi	G. Greenblatt	Sloop		32'	4' 2	O'Day
3301	Quest	R. Cresci	Sloop	215	33'	4'	Morgan
3367	Brown Eyes	D. Rudek	Cutter		32'	3' 10	Bayfield
4201	Soverain	J. Mattera	Sloop		32'	3' 6	Bristol
4382	Yesterdays Dream	W. Fritz	Sloop		27'	3' 6	Tartan
4430	Serene Irene	L. Kohl	Sloop		28'	3'	Irwin
4463	Salthearth	J. McCormack	Sloop	200	27'	4'	Catalina
4495	Eramia	W. Kachel	Sloop	186	32'	3' 5	Irwin
4679	Wind Lass	T. Stephens	Sloop		30'	3' 10	Catalina
4744	Mandalay	J. Saxe	Sloop	196	30'	3' 6	Wanderer
4830	Ericsean	K. Padden	Sloop	195	30'	4' 11	Ericson
5151	Ali Lou	J. Lyons	Sloop		25'	3'	Watkins
5460	Gracie Day	R. Glasser	Sloop		27'	4	Catalina
5583	Southern Comfort	P. Capitain	Sloop	225	25	2' 10	Catalina
5627	Wounded Knee	M. Levine	Sloop	183	30'	4'	Catalina

**FLEET - South Bay Cruising Club
Sailing Auxiliaries**

SAIL#	BOAT NAME	LAST NAME	RIG	HCP	LOA	DRAFT	MODEL
5861	Dragon Fly	J. Davis	Sloop	210	25'	4' 3	C&C
6217	Lady Ann	R. Mourino	Sloop	215	27'	3' 5	Catalina
6401	Presto	F. Hettinger	Sloop		27'	3' 6	Catalina
6744	Lucky Bark III	T. O'Connell	Sloop	210	25'	4'	C&C
7700	Absolut	S. Penny	Sloop	168	25' 11	1' 6	S-2
8634	Lady Di	J. Wendelkin	Sloop		34'	4' 6	Hunter
9194	Balance	S. Ossandon	Sloop	185	29' 6	4'	Hunter
10196	Dragon	D. Gardner	Sloop		35'	3' 9	Pearson
10207	Tranquilizer	R. Daytz	Sloop	149	38'	3' 8	Morgan
10987	Drumshanbo	B. Pittman	Sloop	155	35'	4' 11	Ericson
14423	Cherry Pi	F. Marinaccio	Sloop	210	25'	3' 10	C&C
20774	Windshadow	L. Costelloe	Sloop	132	34' 7	5' 3	C&C
22023	Ricochet	H. Franwick	Sloop		24'	4	J-24
22643	Like, Wow!	W. Brooks	Sloop	174	25' 2	4' 2	Kirby
24191	Quest	R. Van Tassel	Sloop	118	42' 9	4' 9	Tartan
30461	J. Crew	T. Jones	Sloop	171	25'	4' 2	Capri 25
30661	Magic Dragon	R. Freedman	Sloop	109	39' 7	4' 9	C&C
33978	Sigrid	J. Pallotta	Sloop	124	37'	4' 3	Tartan
40601	Menage A' Trois	M. Meyerson	Sloop	210	24' 6	4' 3	Mark 25
40999	Weed	R. Schwartz	Sloop	135	27'	4' 11	Tartan
42281	Jam V	J. Dudek	Sloop	135	35' 5	4' 6	Hunter Legend
42370	Silver Bullet	B. Kennedy	Sloop	123	27' 6	4' 11	J-Boat
42370	Silver Bullet	J. Reichel	Sloop	123	27' 6	4' 11	J-27
42894	Manatuck	E. Reardon	Yawl	190	35'	3' 10	Allied Seabreeze
50043	Raven	G. Bottino	Sloop		43'	7' 6	Tripp
52066	Jacqueline IV	R. Forman	Sloop		42' 9	4' 9	Hinckley
90965	De La Mer	B. Delamer	Sloop	222	27'	3' 8	Watkins

**FLEET - South Bay Cruising Club
Power Auxiliaries**

BOAT NAME	LAST NAME	RIG	LOA	DRAFT	MODEL
Alibi	N. Rising	Power			
Annette Too	A. Eppig	Cruiser	36'	3' 6	Chris Craft
Bucket	P. Lightstone	Trawler	34'	3'	Mainship
Celebration	J. Sicinski	Power	47'	3' 6	Bayliner
Dori	R. Snyder	Power			
Dragon	M. Kohl	Power	20'		Proline
Joyden	D. Maud	Trawler	48'	5'	Krogen
Jubilation	E. Petroske	Power	34	3	Triumpf
Mud Hen	R. Nehring	Skiff	17'		Westig
Our Time	T. Chambers	Power	40	4'	Marine Trader
Salty	B. Brownyard	Power			
Sea Glass	J. Rettaliata	Power	30'	3'	Alura Classic
Siren	A. Pearson	Power	30'	2' 9	Chaparral
Widgeon	W. Carl	Power	34'	3'	Mainship

YACHTS - South Bay Cruising Club

YACHT	SAIL #	OWNER	YACHT	SAIL #	OWNER
A Yacht of Patience	34	R. Kohler	Dragonfly	303	R. Sadowy
Absolut	7700	S. Penny	Drumshanbo	10987	B. Pittman
Adria	277	R. Saganic	Emerald Seas	39	F. Cornman
Aeolus	297	D. Graham	Enchanted	1321	S. Fili
Aerie	185	J. Grover	Eramia	4495	W. Kachel
Ailanthus	1121	W. Grauer	Ericsean	4830	K. Padden
Ali Lou	5151	J. Lyons	Estelle	87	A. Peters
Alone At Last	874	P. Halpin	Falcon	242	A. Heckel
Amethyst	421	D. Davies	Fenian	1858	E. Simmons
Annette Too	power	A. Eppig	Filibuster	12	D. Hyer
Annie B	407	W. Wheeler	Fiona	48	E. Forsyth
Antares II	1133	R. Coleman	Firstlight	110	L. Lowy
Atsa Nysa Too	917	C. Soranno	Fox	150	R. Davis
Bagheera	2016	R. Schaper	Friendly Persuasion	742	T. Schwarting
Balance	9194	S. Ossandon	Gator	639	S. Siegler
Becky	354	C. Becker	Gin Ne Sais Quoi	3221	G. Greenblatt
Betty	9	W. Menger	Glas Menagerie	320	B. Kennedy
Bionator	395	M. Goodman	Gliding Gull	2808	D. Van Nostrand
Blaze	725	R. LaBella	Golden Days	012	E. Kissenberth
Bonnie Lassie	145	C. Healey	Good Wind	151	H. Goodwin
Broadbill	717	M. Warsaw	Gracie Day	5460	R. Glasser
Brokher	759	A. Eppig	H.S. Kathleen L	625	J. Layton
Brown Eyes	3367	D. Rudek	Hot Tar	901	E. Crimmins
Bucket	power	P. Lightstone	Hydrotherapy	2484	M. Kohl
Busman's Holiday	732	S. Brice	Incredible	305	D. Larmor
C'est La Vie	38	R. Murphy	Independence	270	E. Turner
Candide	7	S. Scherek	J. Crew	30461	T. Jones
Carefree	1855	R. LaTorre	Jacqueline IV	52066	R. Forman
Carolina	2712	A. Davies	Jam V	42281	J. Dudek
Catharsis	999	L. Christiansen	Joyden	power	D. Maud
Cee-J2	124	J. Rambold	Jubilation	power	E. Petroske
Celebration	power	J. Sicinski	Judi Ann	68	B. Flett
Char-Lynn	345	C. Parker	Kariana	283	D. Krug
Charisma	77	R. Parker	Karma	413	R. Wiehl
Cherry Pi	14423	F. Marinaccio	Kickin' Back	1227	M. O'Connell
Chimera	92	P. Lightstone	Kittiwake	669	R. Olsen
Clepsydra	578	M. Van Zanten	Kittiwake	914	P. Rettaliata
Clipper	136	P. Rendich	Kitty K.	96	W. Kleisler
Colie	5	J. Herschenhaus	Kristeki	090	D. Supple
Colleen	335	B. Horn	Lady Ann	6217	R. Mourino
Compass Rose	2641	J. Leddy	Lady Barbara	105	J. Levitsky
Counterpoint	1204	J. Becker	Lady Barbara	1395	J. Nielsen
Courtesan	1090	J. Young	Lady Di	8634	J. Wendelkin
Cu Mara	308	L. A. Schaefer	Last Fling	102	T. Hangarter
Daydreamer	711	J. Webb	Laurie Jean	641	G. Messina
De Ja Vu	37	P. Revella	Leprechaun	112	D. Connor
De La Mer	90965	B. Delamer	Lighthouse	103	B. Brownyard
Discovery	26	J. Mularadelis	Like, Wow!	22643	W. Brooks
Don Quixote	382	C. Sagarese	Little Wind	27411	R. Sabella
Dori	power	R. Snyder	Loki	221	G. Johnson
Dragon	power	M. Kohl	Lorna Doone	120	R. Van Nostrand
Dragon	10196	D. Gardner	Lucky Bark III	6744	T. O'Connell
Dragon Fly	5861	J. Davis	Magic	1000	R. Finkle
Dragon's Den	1181	R. Vetter	Magic Dragon	30661	R. Freedman

YACHTS - South Bay Cruising Club

YACHT	SAIL #	OWNER	YACHT	SAIL #	OWNER
Manana	23	F. Holwell	Second Wind	170	W. Thomas
Manatuck	42894	E. Reardon	Second Wind	367	R. Malloy
Mandalay	4744	J. Saxe	Serene Irene	4430	L. Kohl
Menage A' Trois	40601	M. Meyerson	Shadow	203	C. Margeson
Merri Mac	11	B. MacGill	Shoot'n the Breeze	675	R. Czach
Merry Ann	220	W. Cook	Sigrid	33978	J. Pallotta
Mirage	536	G. Schneller	Silhouette	1260	T. Gotard
Moondance	225	T. Penn	Silver Bullet	42370	B. Kennedy
Moonraker	621	B. Martorana	Silver Bullet	42370	J. Reichel
Mud Hen	power	R. Nehring	Silver Mist	27	B. Silver
Mystique	88	J. Rettaliata	Siren	power	A. Pearson
Nauti Lady	33	F. Roan	Skylark	45	W. Thayer
Nereid	43	J. Tuffin	Slim	62	B. McLoughlin
Nephele	1770	M. Forde	Solitude	43	C. Schaffer
Njord	144	W. Eilbeck	Southern Comfort	5583	P. Capitain
Obsession	114	G. Schwarting	Soverain	4201	J. Mattera
Our Time	power	T. Chambers	Spirit	615	W. Titus
Painkiller	222	D. Tedesco	Stardust	57	J. Ferguson
Papillon	166	J. Hallam	Stardust	524	M. Gargiulo
Patience	1699	B. Rottkamp	Sugar 'N Spice	509	T. Drossos
Patricia Ann	664	R. Wills	Summer Breeze	1712	M. Hanrahan
Petite Swiss	485	U. Staehli	Sunriser	346	H. Smith
Phantom	280	T. Arnold	Sunshine	822	V. Kind
Pilgrim Wind	2217	M. Farrell	Susy-Q	116	M. Schoenwald
Presto	6401	F. Hettinger	Therapy	832	E. Manion
Puffin	212	J. Sachnoff	Tiki	224	F. Orlando
Pursuant	260	D. Brous	Tom Boy II	302	T. Chambers
Pzaz	254	J. Schlitt	Tranquilizer	10207	R. Daytz
Quest	3301	R. Cresci	True Love ?	1518	L. Becker
Quest	24191	R. Van Tassel	Tuono	67	P. Ljungqvist
Quetzal	704	D. Caporale	Vi	125	A. Yaxis
Ranger	1442	R. Malinka	Vixen	130	F. Peter
Raven	50043	G. Bottino	Voodoo Lady	1144	E. Sowden
Reality	442	D. Spivack	Wandelaar	1085	J. Schwartz
Red Dog	400	B. Kennedy	Weed	40999	R. Schwartz
Red Dog	400	J. Reichel	Whisper	443	R. Sherwood
Redwing	137	J. Morgan	Widgeon	power	W. Carl
Resistance	176	R. Dunlop	Wild Blue II	360	A. Mulle'
Ricochet	22023	H. Franwick	Williwaw	605	M. Randazzo
Runaway Too	715	P. Schulz	WIND LASS	4679	T. Stephens
Saga	190	R. Rothaug	Windshadow	20774	L. Costelloe
Salthart	4463	J. McCormack	Windstar	46	L. Novak
Salty	power	B. Brownyard	Witch Craft	629	R. Pettit
Sea Dream	423	W. Dunleavy	Wounded Knee	5627	M. Levine
Sea Glass	power	J. Rettaliata	Yellowbird	2404	M. Smith
Sea Jay	35	J. Wragge	Yesterdays Dream	4382	W. Fritz
			Zephyr	705	A. Feldman

IN MEMORIAM



Robert Garben
Frederick Gauch, Jr.
Francis Lotter
Albert E. Rising

*Here by the windy docks I stand
alone,
But yet companioned. There the
vessel goes,
And there my friend goes with it: but
the wake
That melts and ebbs between that
friend and me
Love's earnest is of Life's all-
purposeful
And all-triumphant sailing...*

*- Edwin Arlington Robinson
"Octaves"*

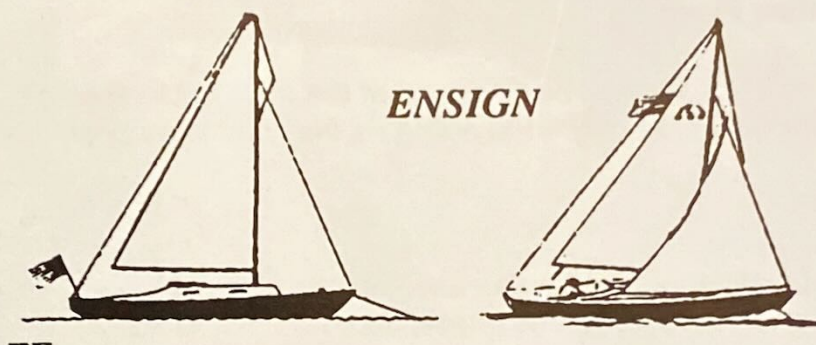
FLAGS AND SHAPES

Flag Etiquette

The correct display of flags, signals, and ensigns is one of the more obvious marks of a yachtsman. This code is steeped in the tradition of the sea and promotes uniformity in communication and identification between yachts. The following flag etiquette covers the signals that are used daily on small or medium sized sailing yachts.

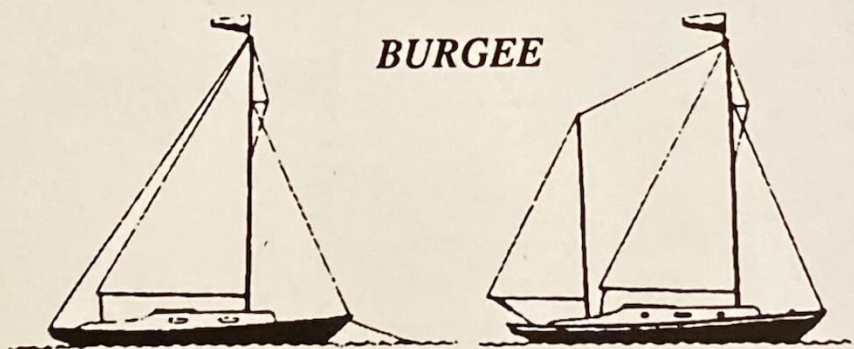
The Ensign

The ensign is displayed between morning and evening colors (0800 and sunset)



1. At anchor or under power: at the stern staff.
2. Under sail: at the stern staff if not racing and if the boom does not overhang, or at the after-peak of a gaff-rigged sail; or 2/3 of the way up the leach of a after-most genoa-rigged sail.

The Burgee



The club burgee is displayed whenever the ensign is displayed, but may also be displayed separately, between morning and evening colors, or by day and night, while at anchor or under way on:

1. The masthead of single-masted yachts.
2. The forward masthead of two-masted yachts.
3. The burgee should be replaced with a suitable wind indicator while racing.

The Private Signal

The owner's private signal may be displayed by day and night on:

1. The masthead of single-masted yachts in place of the burgee.
2. At the after masthead of two-masted yachts, at anchor or underway.

Flag Officers' Flags

A flag officer shall display his flag both day and night in place of his private signal.

Race Committee Flag

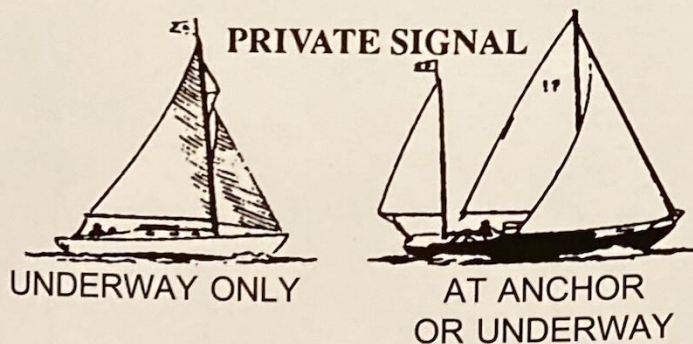
The race committee flag shall be displayed at the main truck, in place of the flag otherwise there displayed only while acting as the committee boat.

Signal Flags

The starboard main spreader is to be used only for signal flags and specific flags such as the owner absent flag and guest flag.

Dressing Ship

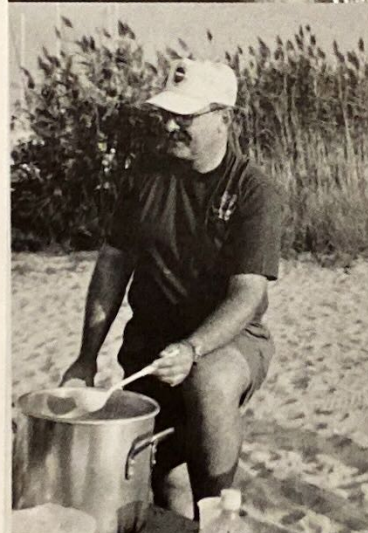
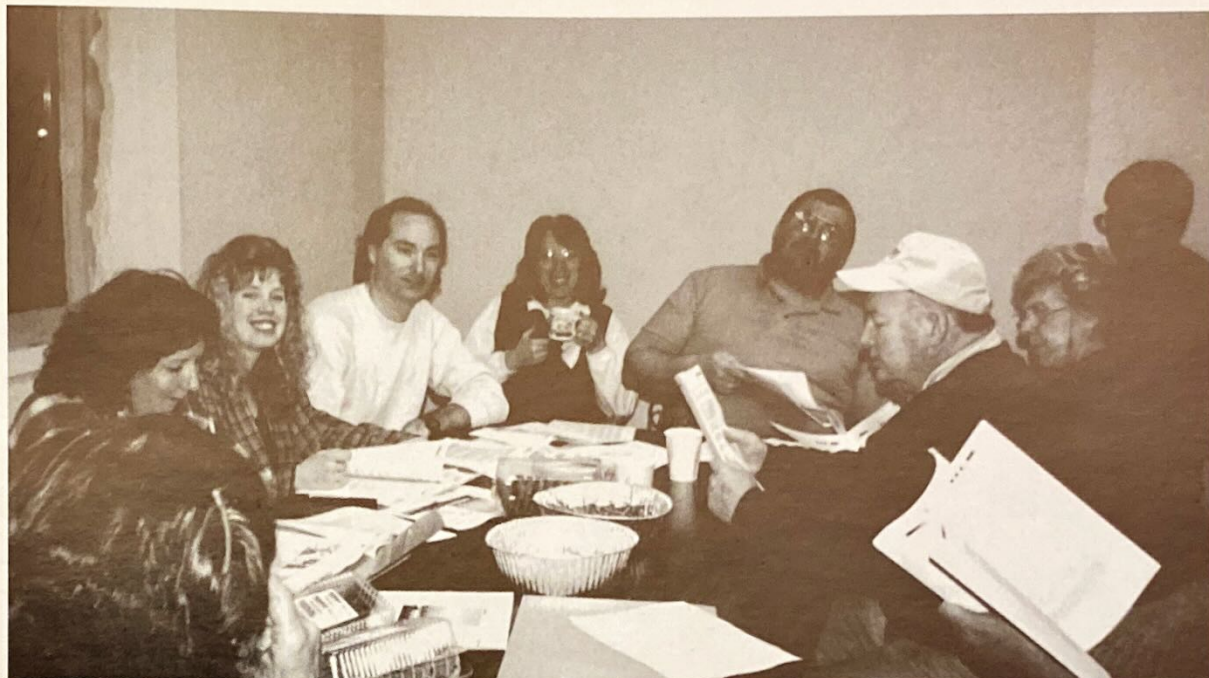
When dressing ship on Commissioning Day, Independence Day, and on other

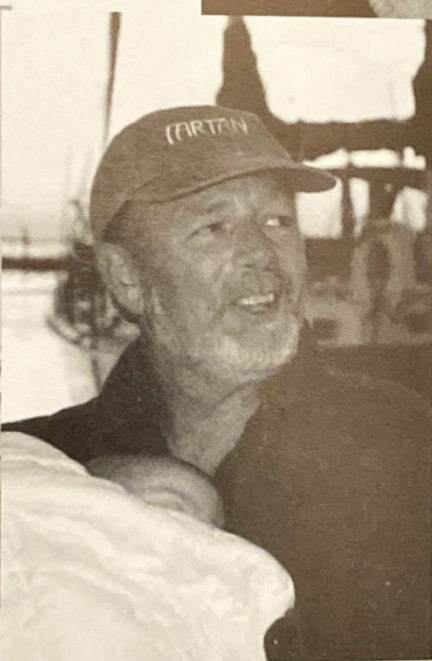
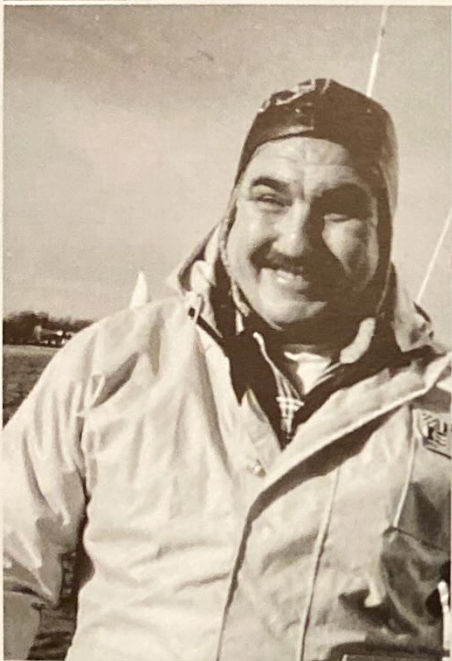
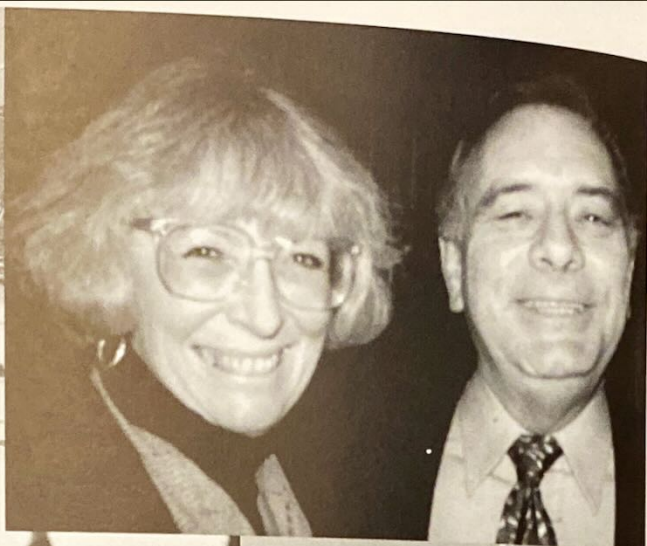


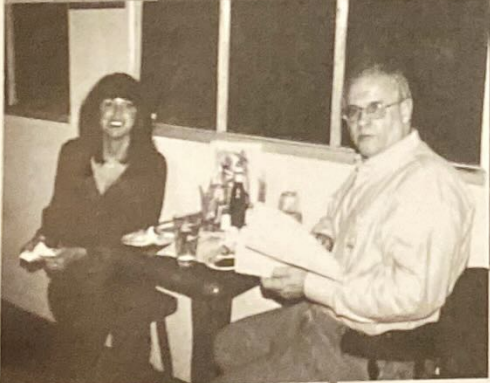
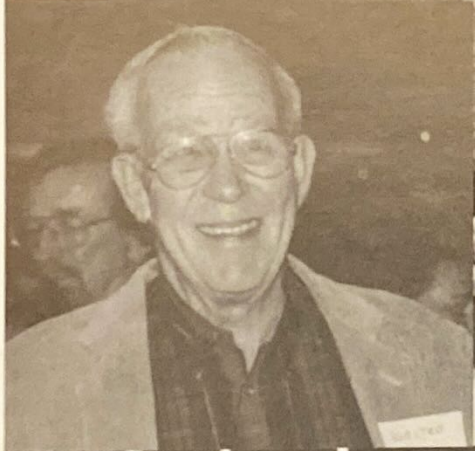
special occasions, the following order of international code flags is recommended (starting from forward): AB2, UJ1, KE3, GH6, IV5, FL4, DM7, PO 3rd repeater, RN 1st repeater, STzero, CX9, WO8, ZY 2nd repeater. Ensigns, burgee, private signals etc. should not be included.

Required Shape Displays (daylight)

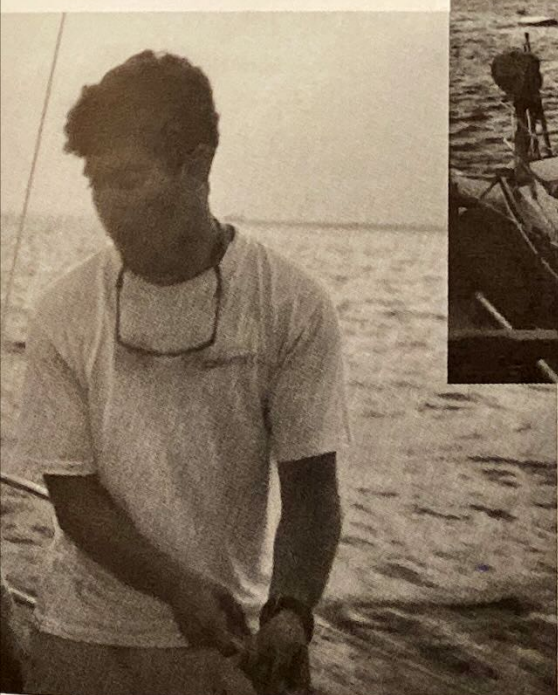
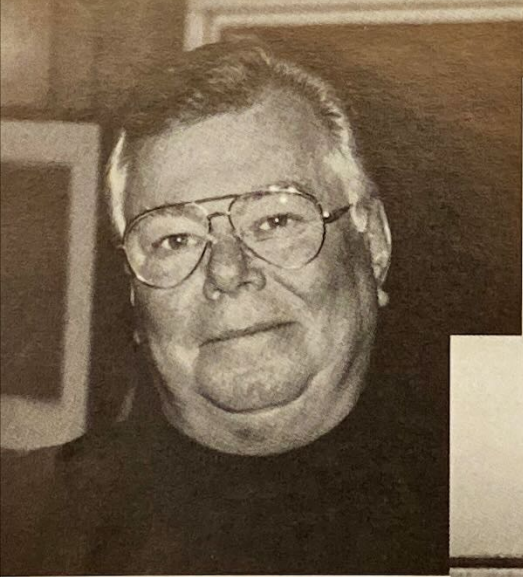
1. When anchored in an area other than a designated anchorage, sailing vessels must display a single, black, spherical shape. For lesser craft (those under 20 meters) the size of the shape should be "commensurate with their length."
2. When under sail and power (motorsailing), vessels are required to fly a black cone with the apex down.











Due to the splendid photos and sketches submitted by many of our members, this yearbook becomes an important repository of our shared experiences. Thanks to:

Dennis and Barbara Connor, Doug and Barbara Davies,
Joe and Annmarie Dudek, Bill and Sally Eilbeck, Eric Forsyth,
Michael and Gail Goodman, Tom and Joyce Gotard,
Michael and Robin Kohl, Jack and Barbara Levitsky,
Gaspere and Laurie Messina, Jack and Barbara Nielsen,
Kevin and Loretta Padden, Thom and Linda Penn,
Andrew and Frances Peters, Barry and Michelle Pittman,
Marguerite Post, John and Corinne Rambold,
Roger and Isabelle Ramsdell, Ray and Jo Rothaug,
Ed and Kathy Simmons, Bob Snyder,
Alec and Vi Yaxis, Fred and Barbara Zimmerman

The preparation of this yearbook was only possible because of the help and suggestions from all those involved - and they are many.

To our members who patiently filled out questionnaires and responded to never ending phone queries and postcards - I thank you.

To the chair persons of our various committees who rallied so quickly in providing the details of our past year's activities and this year's agenda - I thank you.

To Gene Reardon for supplying us with a record of our early years - I thank you.

To Sally Eilbeck who organized and implemented the telephone campaign to insure that our data was accurate - I thank you.

To Laurie Messina who prepared our New Members section - I thank you.

To Robin and Michael Kohl who made their offices available for our yearbook meetings - I thank you.

To the friends of the SBCC, Edit Leventon and Michael Petroske, who gave freely and eagerly of their time and expertise - I thank you.

But especially to all the members of my yearbook committee who spent so many rainy nights at our meetings, and who toiled so diligently to bring you this book. Without their efforts, insights, suggestions, perseverance and many, many reviews, this annual compendium would not have been possible - and I thank you.

Bill

INTERNATIONAL CODE FLAGS AND PENNANTS

A		L		W		NUMERAL PENNANTS		
B		M		X				
C		N		Y				
D		O		Z				
E		P		REPEATERS				
F		Q			1			
G		R			2			
H		S			3			
I		T		CODE AND ANSWERING PENNANT			4	
J		U			5			
K		V			6			
					7			
					8			
					9			
					0			

